

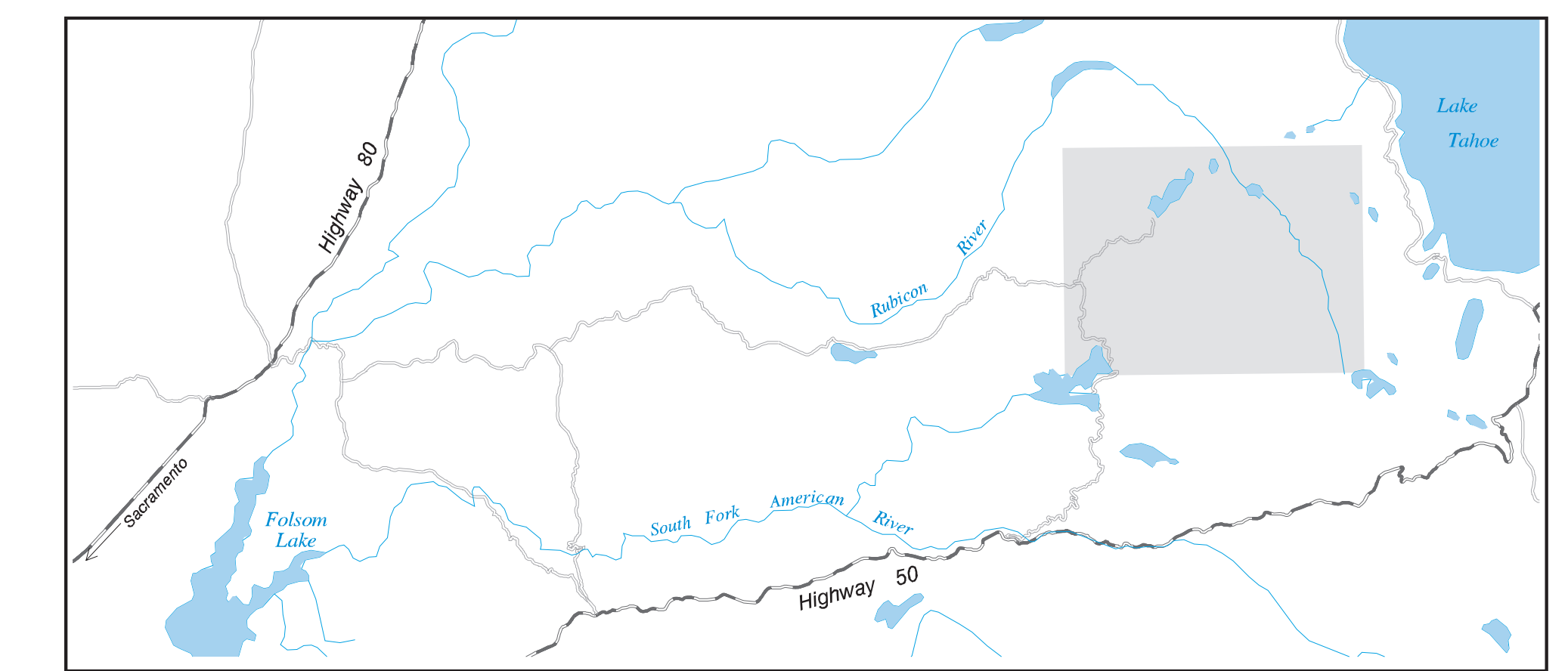
UARP AND CHILI BAR PROJECT MAPS

- UARP Site Map, Northeast..... B1
- UARP Site Map, Southeast..... B2
- UARP and Chili Bar Project Site Map, West B3
- UARP Site Map, Southwest..... B4
- VES Survey Site Photos (On CD Only) B5

Upper American River Project

FERC Project No. 2101

Northeast Area



GEOMORPHOLOGY

Level II/III Site Maps with
Level I Stream Type Delineation

Level I Stream Types

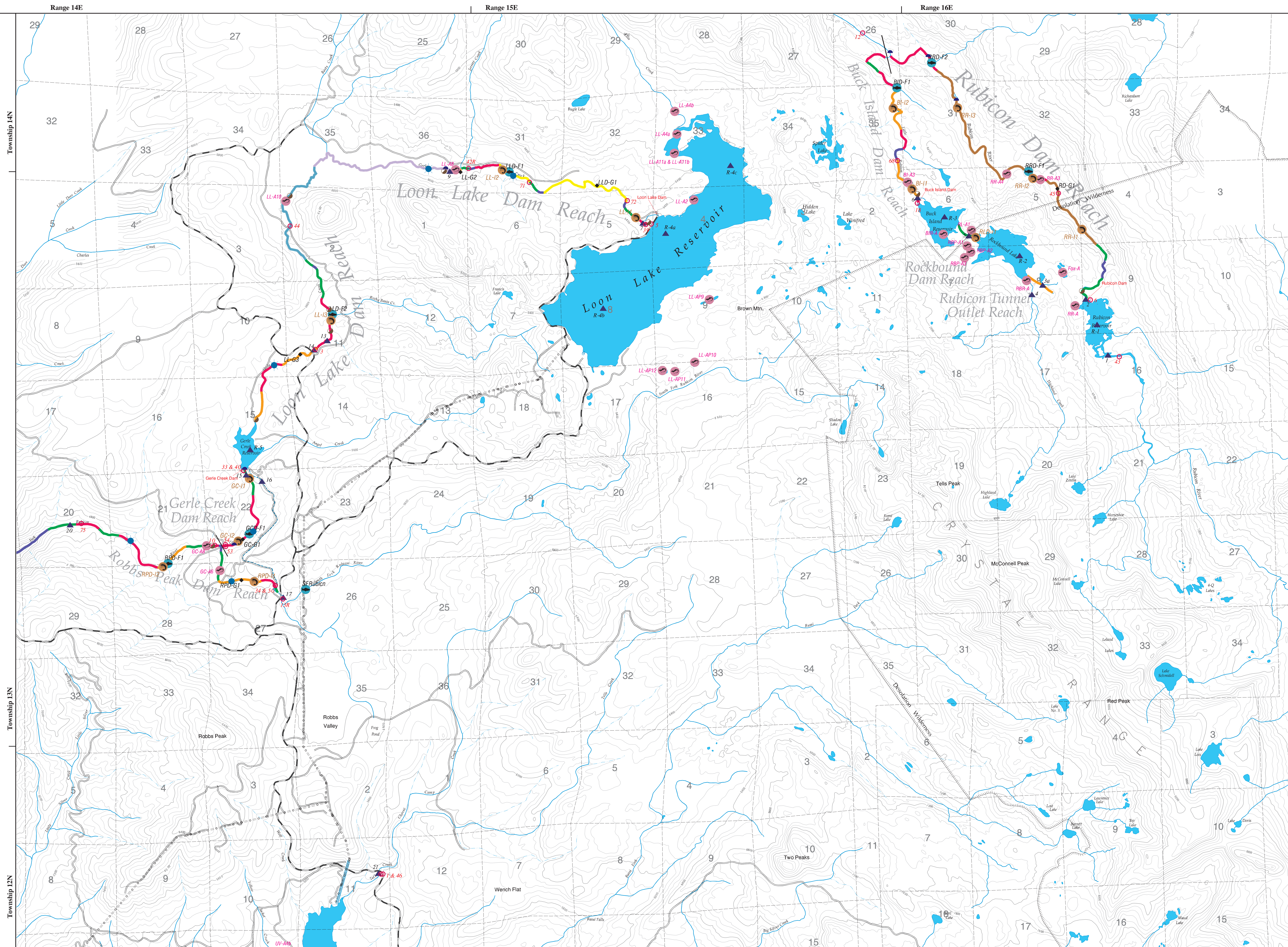
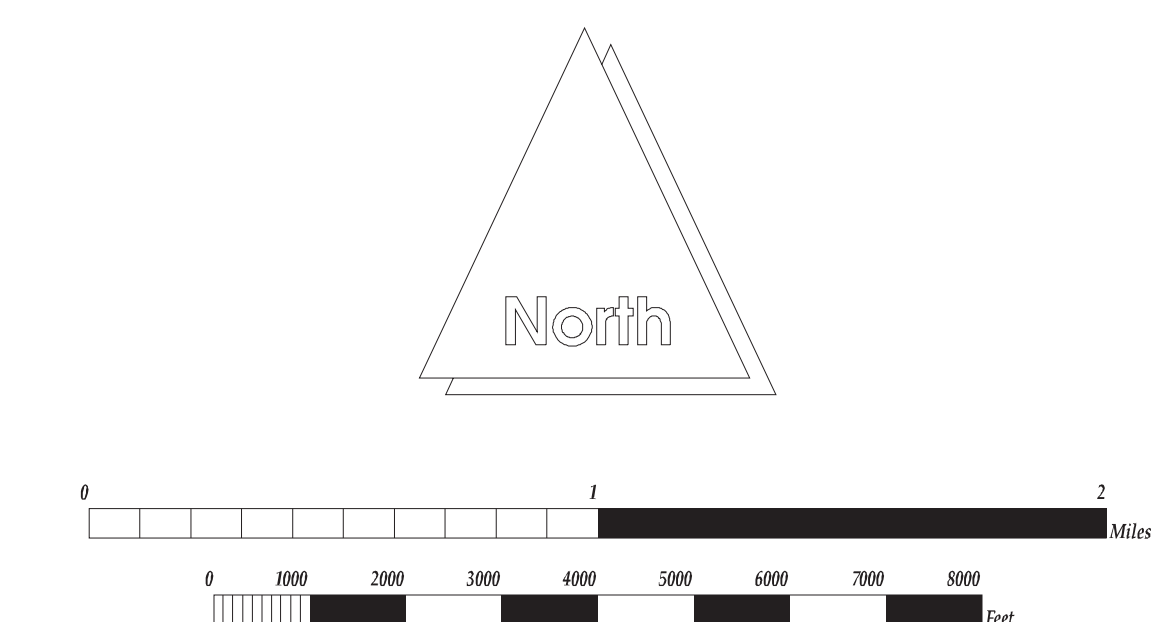
- A
- Aa+
- B
- C
- C/E/D
- C/E
- C/F
- C/F/G
- E/F/C
- F
- (denotes division between reaches)

Level II/III Sites

- ◆ Geomorphology Site Locations

AQUATIC SURVEYS

- Amphibians
- Fish
- Invertebrates
- PHABSIM Sites
- ▲ Water Quality Stations
- Water Temperature Sensor Sites
- Hydrology Nodes
- Hydrology Nodes/Gaging Stations
- Flow Fluctuation Fish Sample



Upper American River Project

FERC Project No. 2101

Southeast Area



GEOMORPHOLOGY

Level II/III Site Maps with
Level I Stream Type Delineation

Level I Stream Types

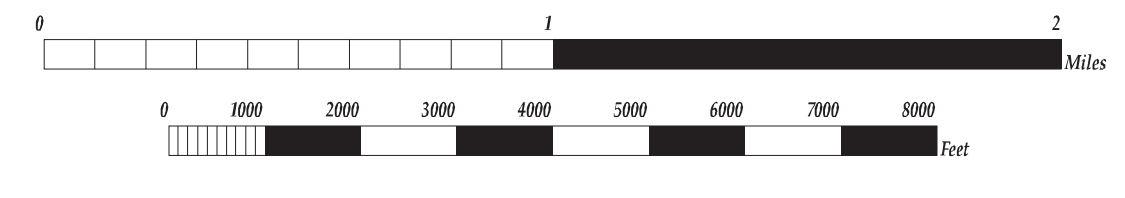
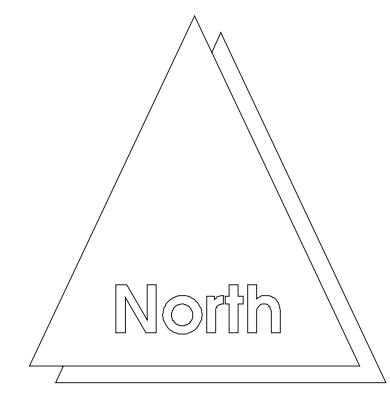
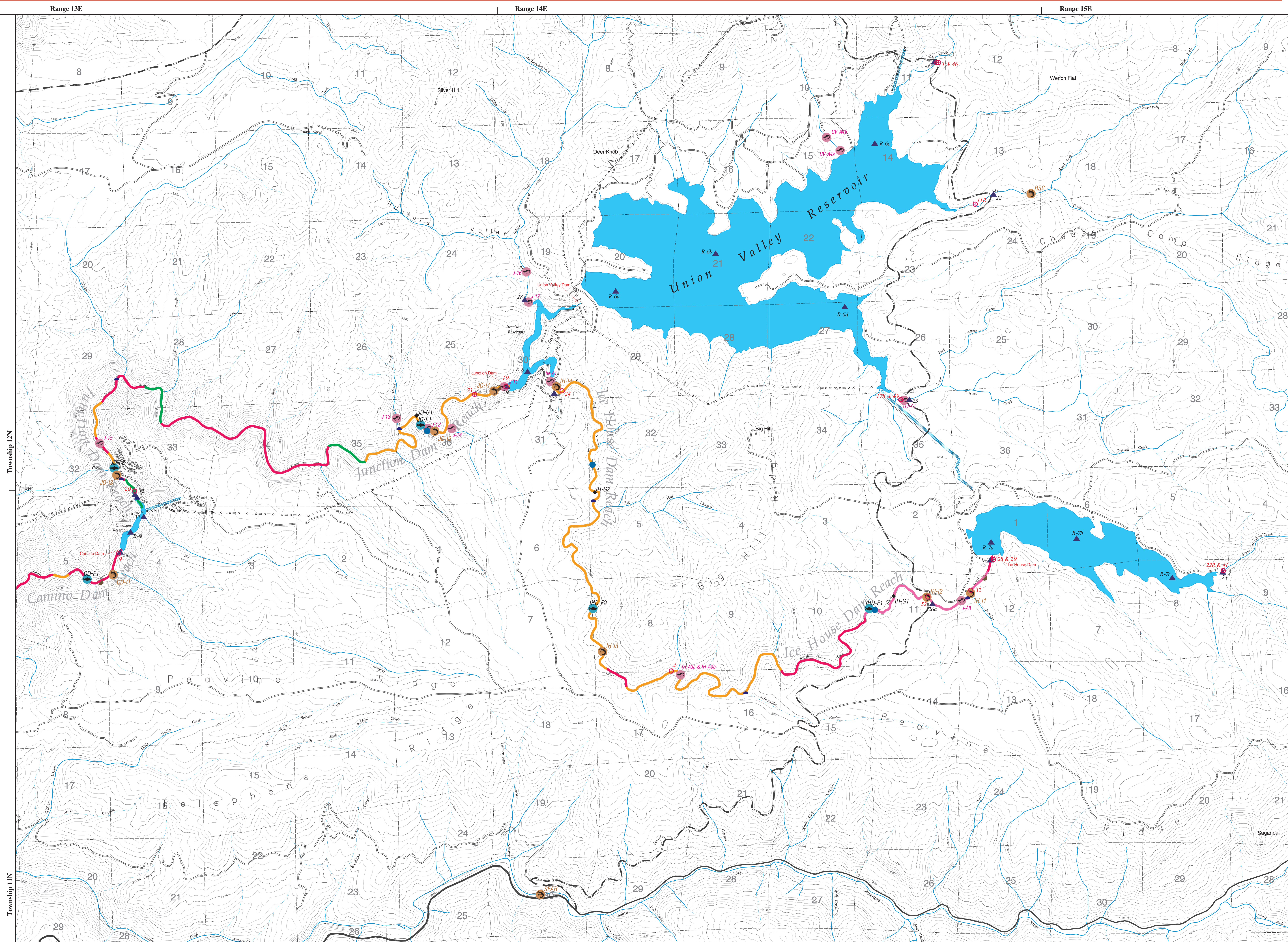
- A
- Aa+
- B
- C
- C/E/D
- C/E
- C/F
- C/F/G
- E/F/C
- F
- (denotes division between reaches)

Level II/III Sites

- Geomorphology Site Locations

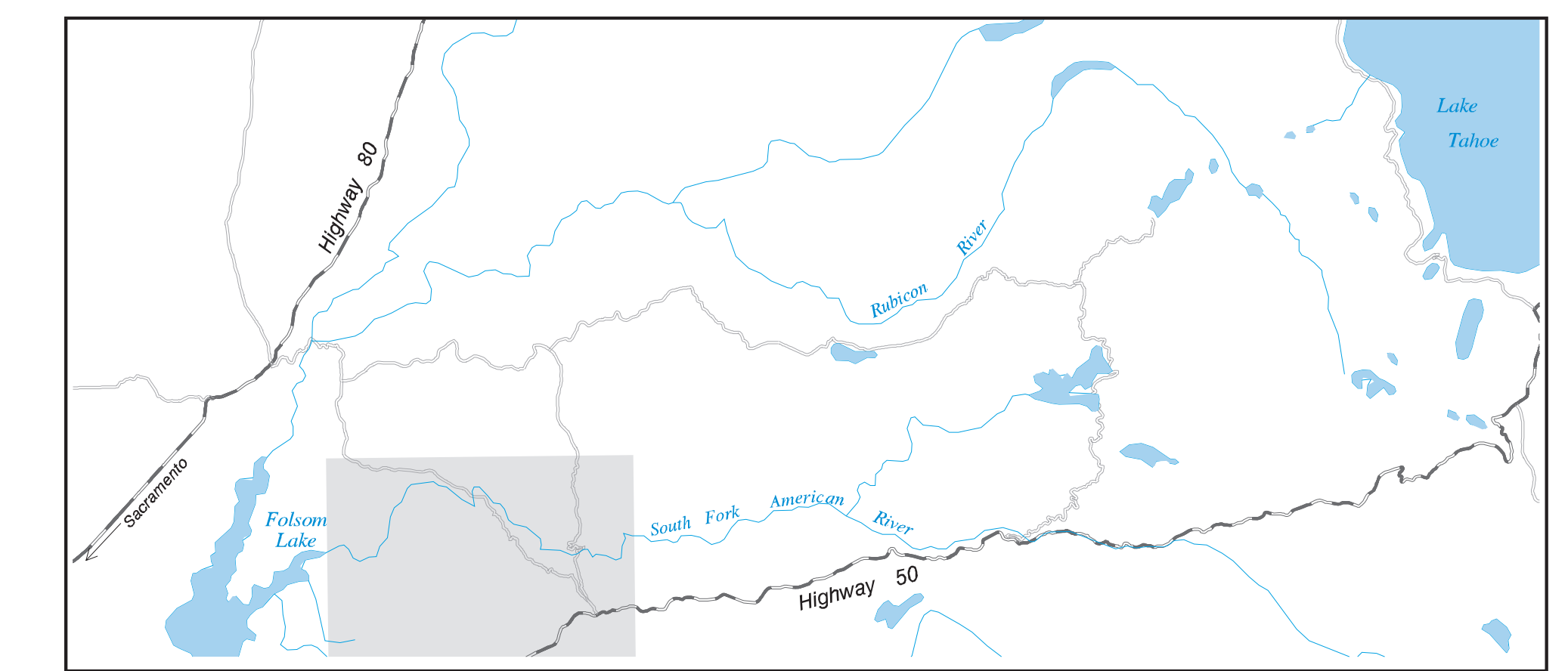
AQUATIC SURVEYS

- Amphibians
- Fish
- Invertebrates
- PHABSIM Sites
- Water Quality Stations
- Water Temperature Sensor Sites
- Hydrology Nodes
- Hydrology Nodes/Gaging Stations
- Flow Fluctuation Fish Sample



Upper American River Project FERC Project No. 2101

Western Area



GEOMORPHOLOGY

Level II/III Site Maps with
Level I Stream Type Delineation

Level I Stream Types

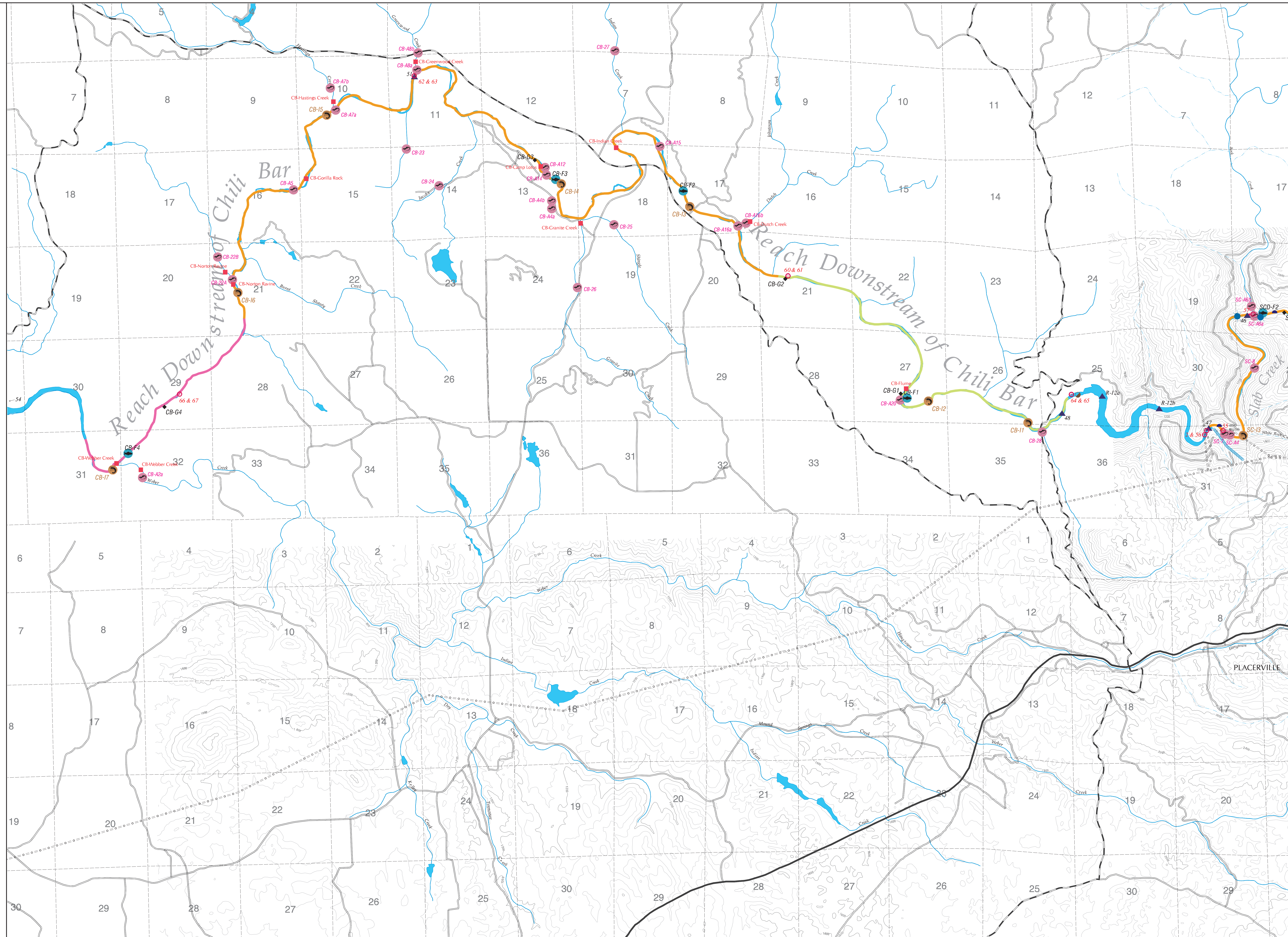
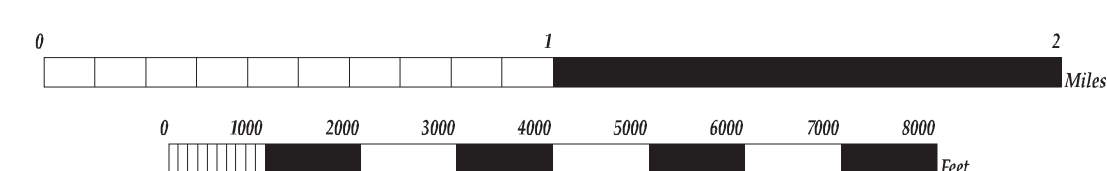
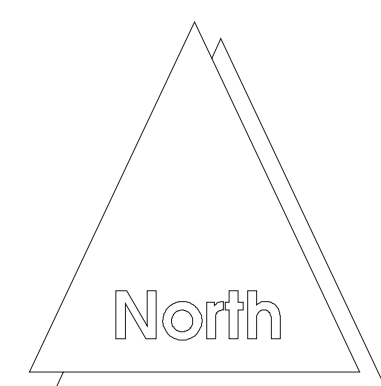
- A
- Aa+
- B
- C
- C/E/D
- C/E
- C/F
- C/F/G
- E/F/C
- F
- (denotes division between reaches)

Level II/III Sites

- ◆ Geomorphology Site Locations

AQUATIC SURVEYS

- Amphibians
- Fish
- Invertebrates
- PHABSIM Sites
- ▲ Water Quality Stations
- Water Temperature Sensor Sites
- Hydrology Nodes
- Hydrology Nodes/Gaging Stations
- Flow Fluctuation Fish Sample



Upper American River Project FERC Project No. 2101

Southwest Area



Geomorphology Site Maps With Level I Stream Type Delineation

Level I Stream Types

- A
- Aa+
- B
- C
- C/E/D
- C/E
- C/F
- C/F/G
- E/F/C
- F
- (denotes division between reaches)

Geomorphology Sites

- Geomorphology Site Locations

