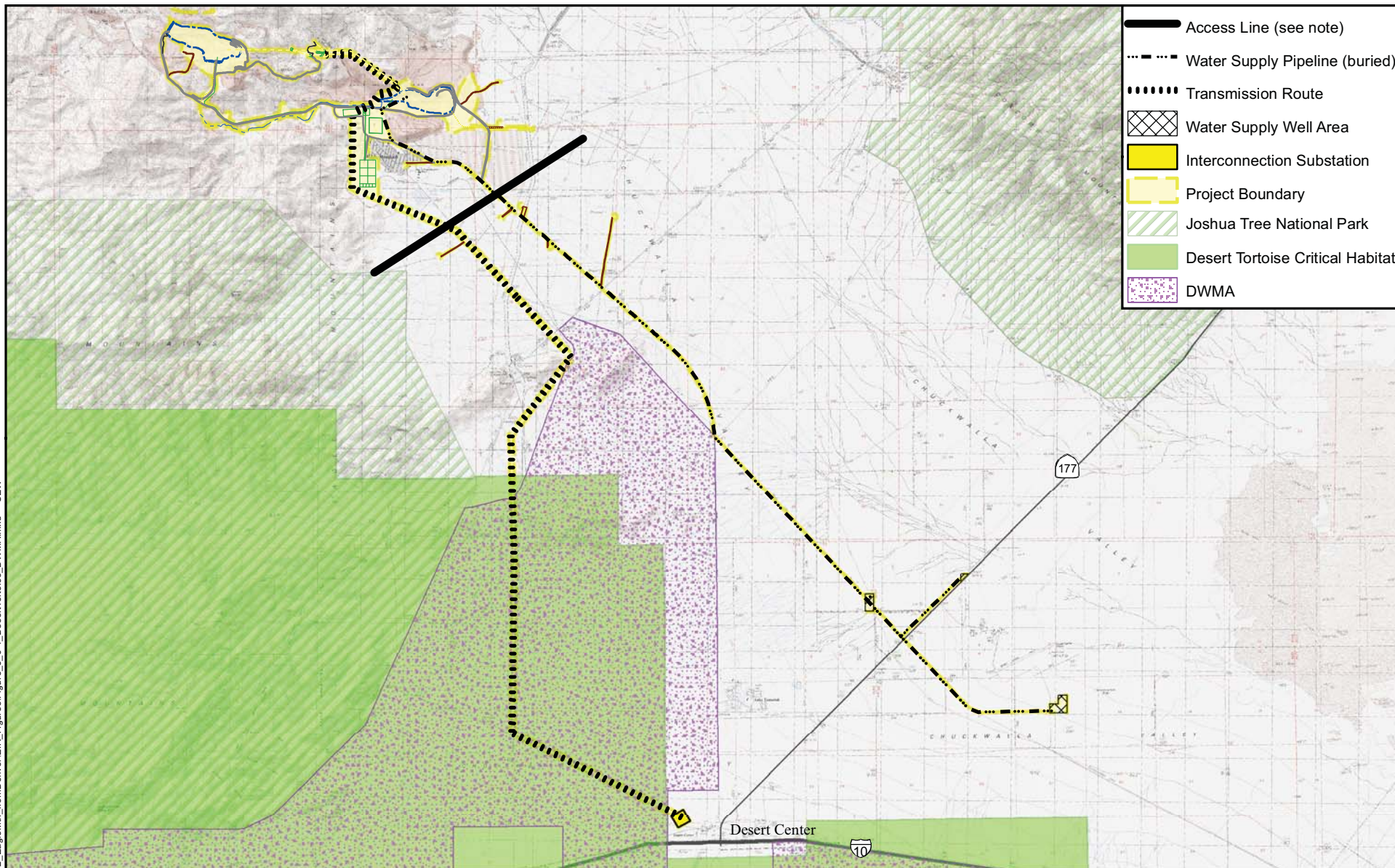


08-Jun-2010 Z:\Projects\080472_EagleMtn_fromDenver\EIR_Figures\Figure_3_6-1_DesertTortoise_DWMA.mxd SEW



NOTE: Mapping northwest of Access Line is based on aerial photographs and ground views rather than direct site access.

Environmental Impact Report
prepared for State Water Resources Control Board
by GEI Consultants, Inc.

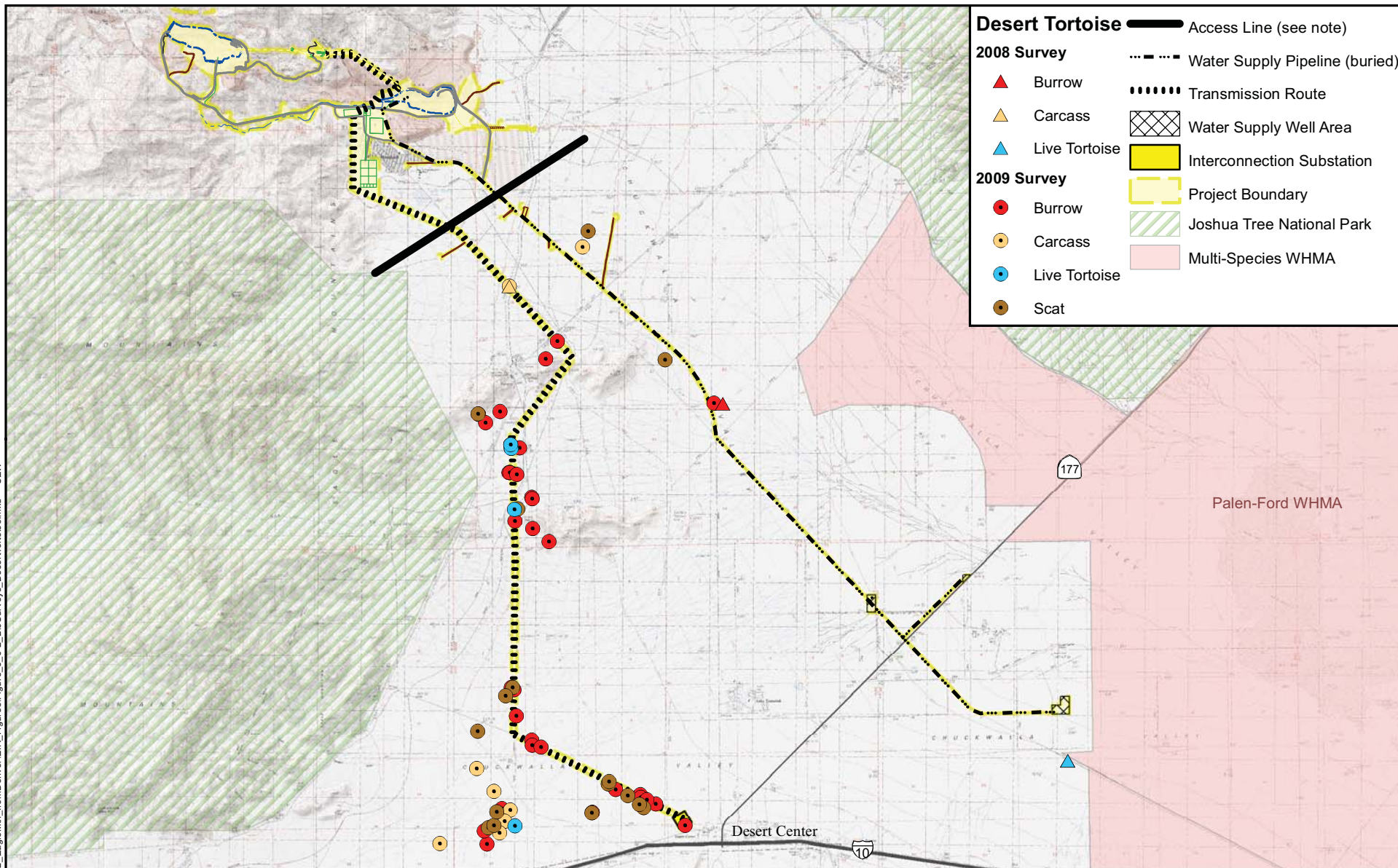
Eastern Riverside County, California



DESERT TORTOISE CRITICAL
HABITAT AND DWMA
IN THE PROJECT AREA

June 2010

Figure 3.6-1



NOTE: Mapping northwest of Access Line is based on aerial photographs and ground views rather than direct site access.



Environmental Impact Report
prepared for State Water Resources Control Board
by GEI Consultants, Inc.

Eastern Riverside County, California

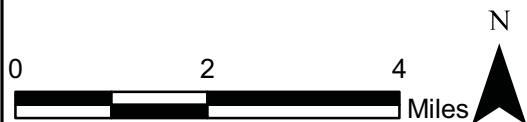
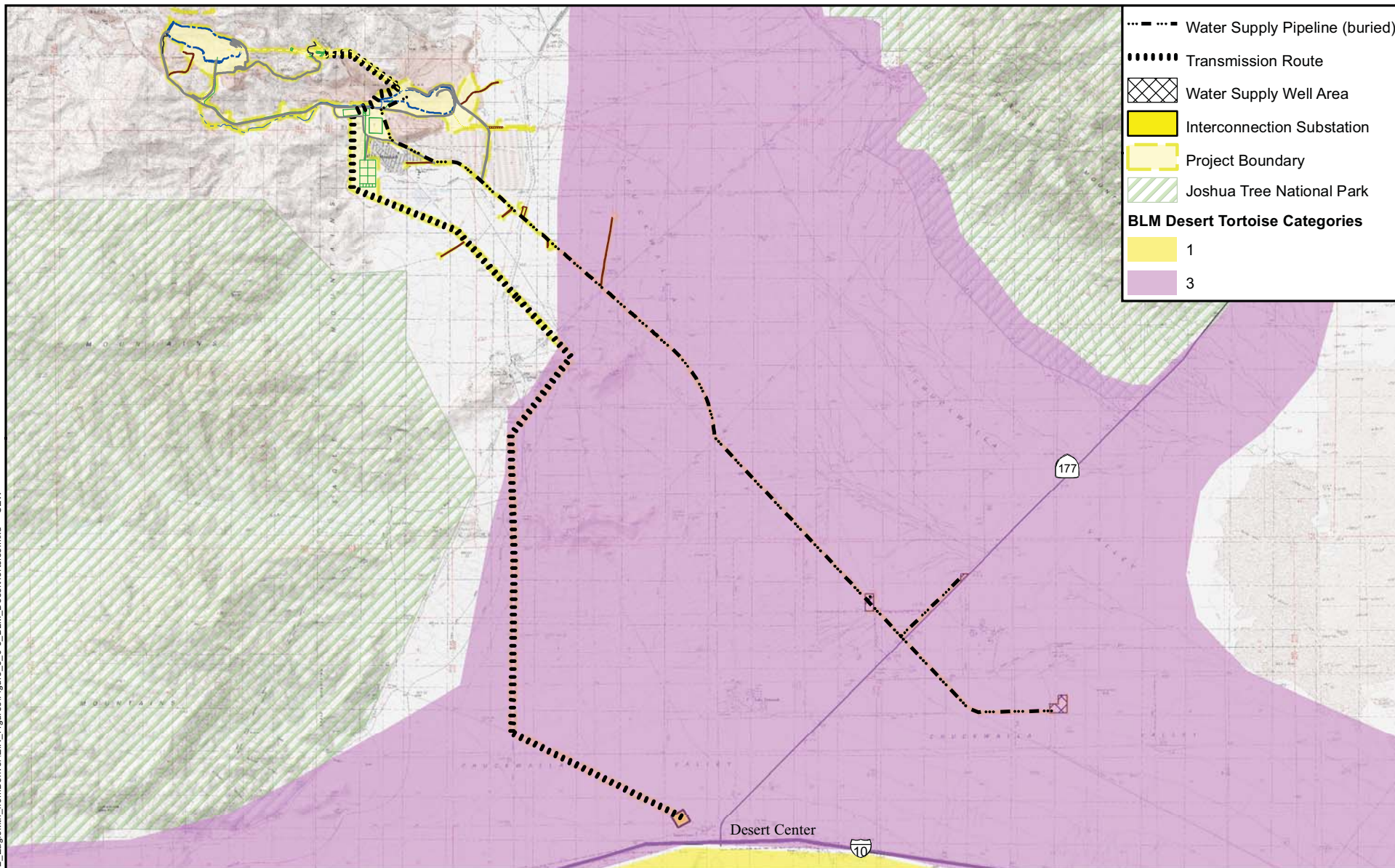


RESULTS OF SPECIAL
BIOLOGICAL RESOURCES
SURVEYS IN 2008 AND 2009:
DESERT TORTOISE

June 2010

Figure 3.6-2

04-Jun-2010 Z:\Projects\080472_EagleMtn_fromDenver\EIR_Figures\Figure_3_6-3_BLM_DesertTortoise.mxd SEW



Environmental Impact Report
prepared for State Water Resources Control Board
by GEI Consultants, Inc.

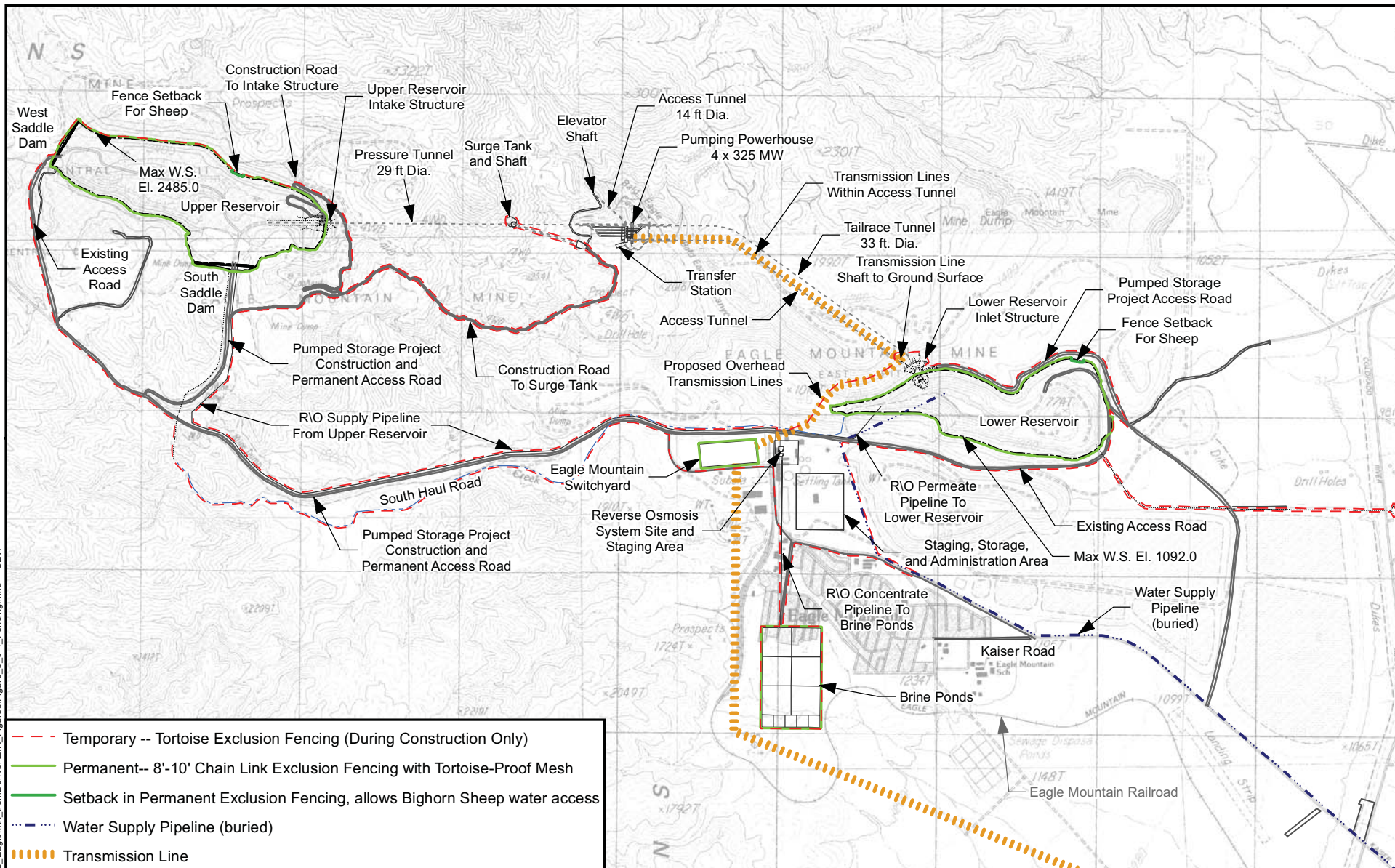
Eastern Riverside County, California



BLM DESERT TORTOISE
CATEGORIES NEAR
PROJECT AREA

June 2010

Figure 3.6-3



0 0.5 1 Miles



Environmental Impact Report
prepared for State Water Resources Control Board
by GEI Consultants, Inc.

Eastern Riverside County, California



WILDLIFE
EXCLUSION FENCING

June 2010

Figure 3.6-4