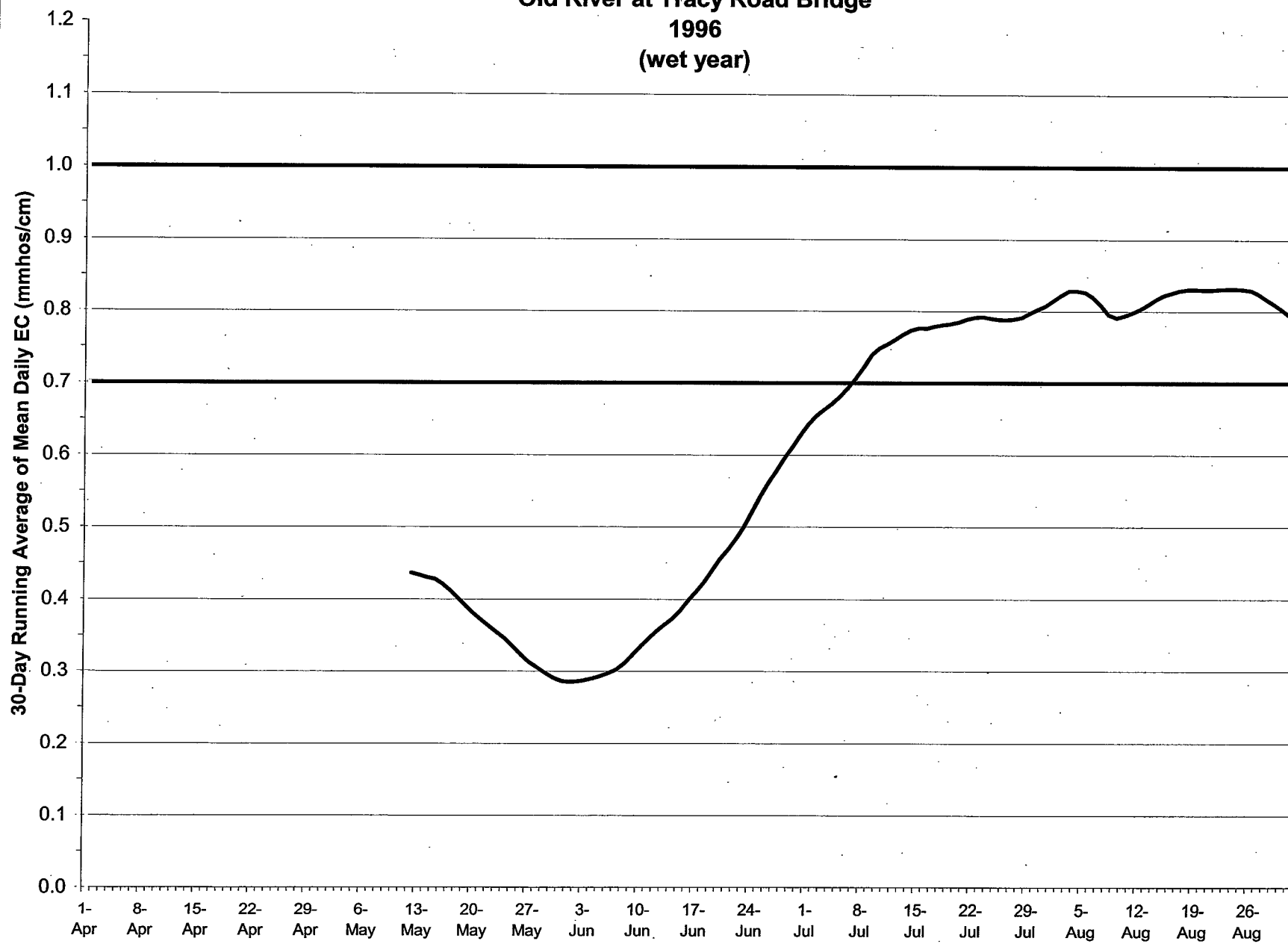
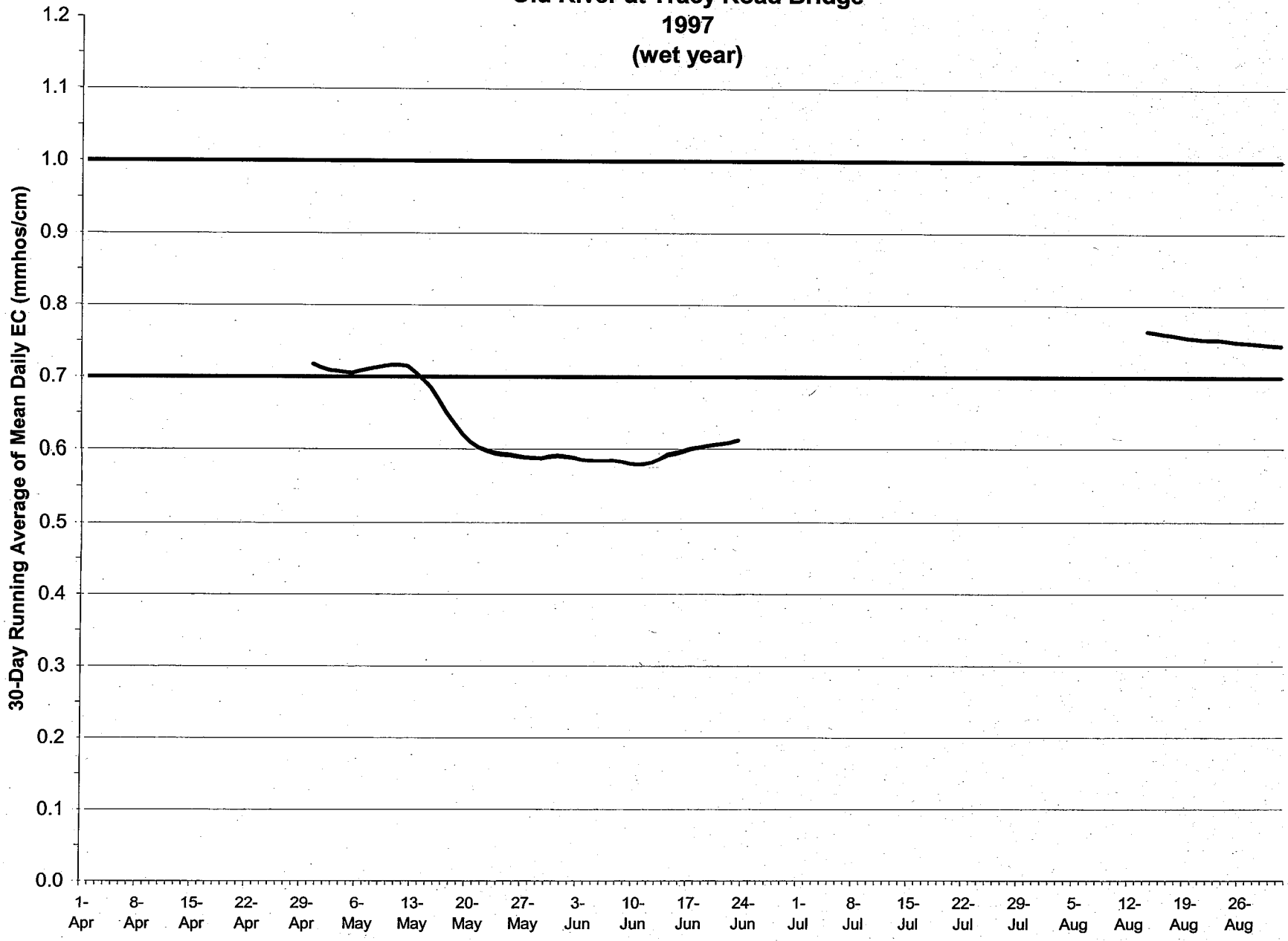


Station P-12  
Old River at Tracy Road Bridge  
1996  
(wet year)

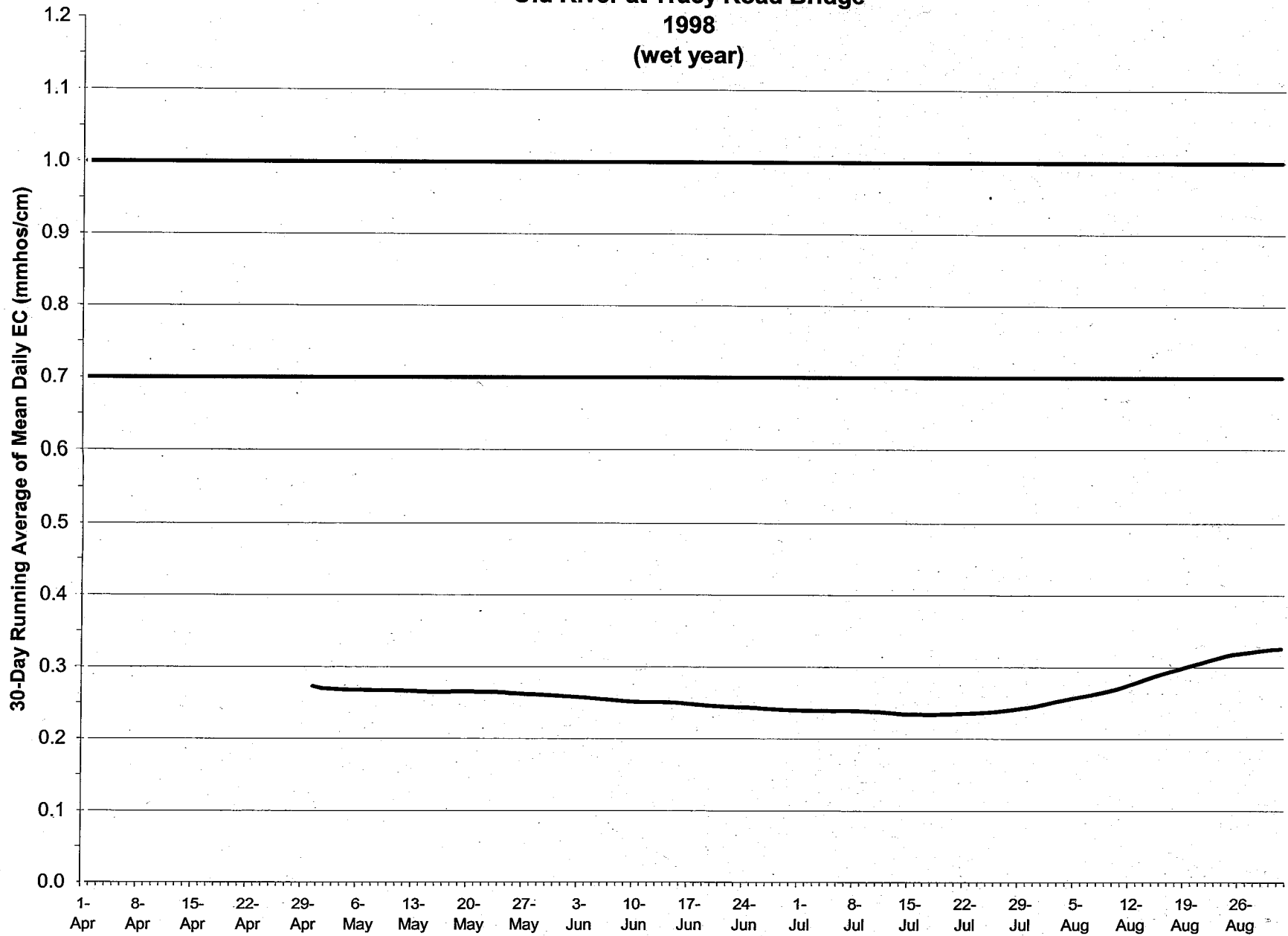


WR-12

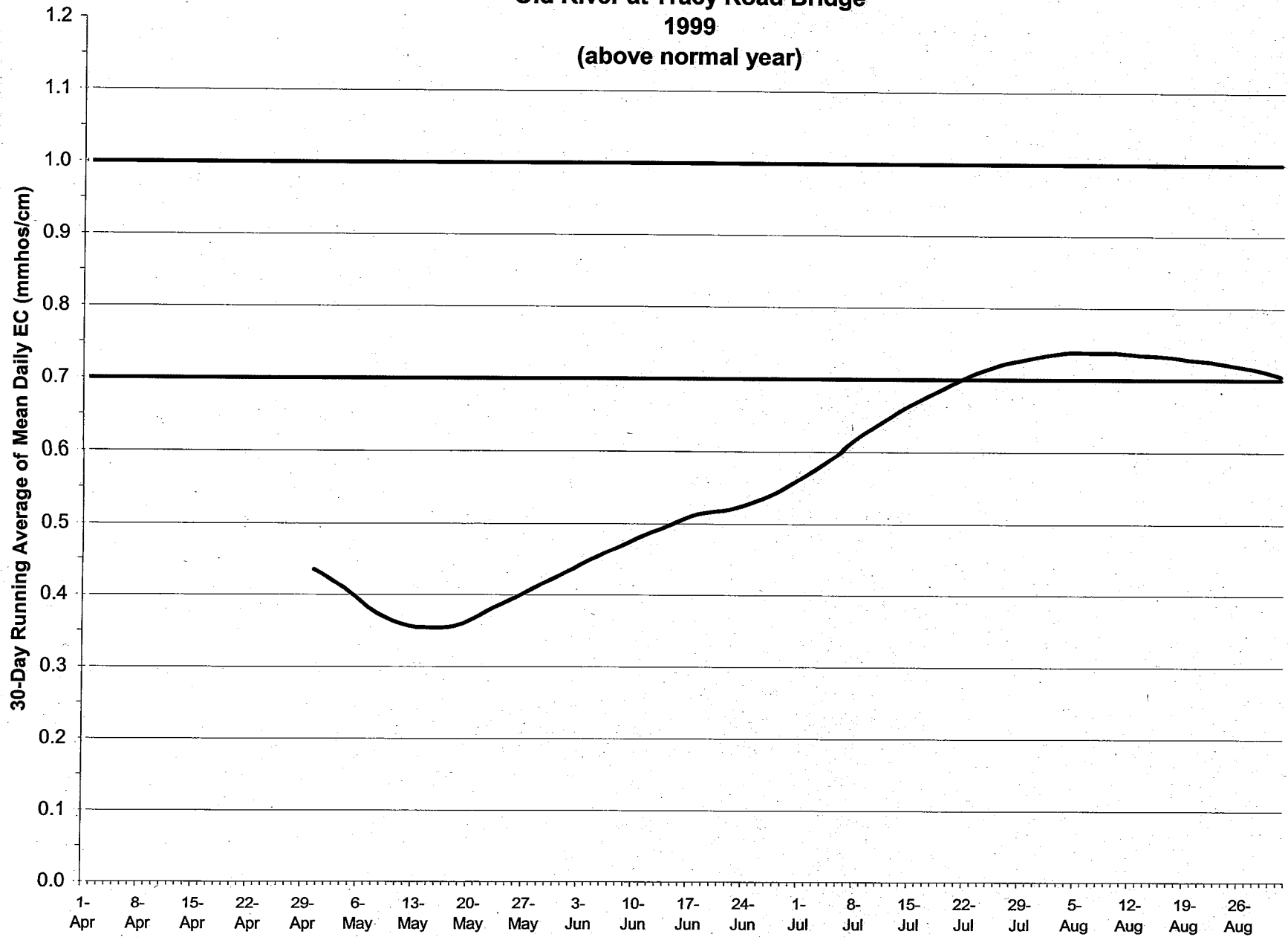
Station P-12  
Old River at Tracy Road Bridge  
1997  
(wet year)



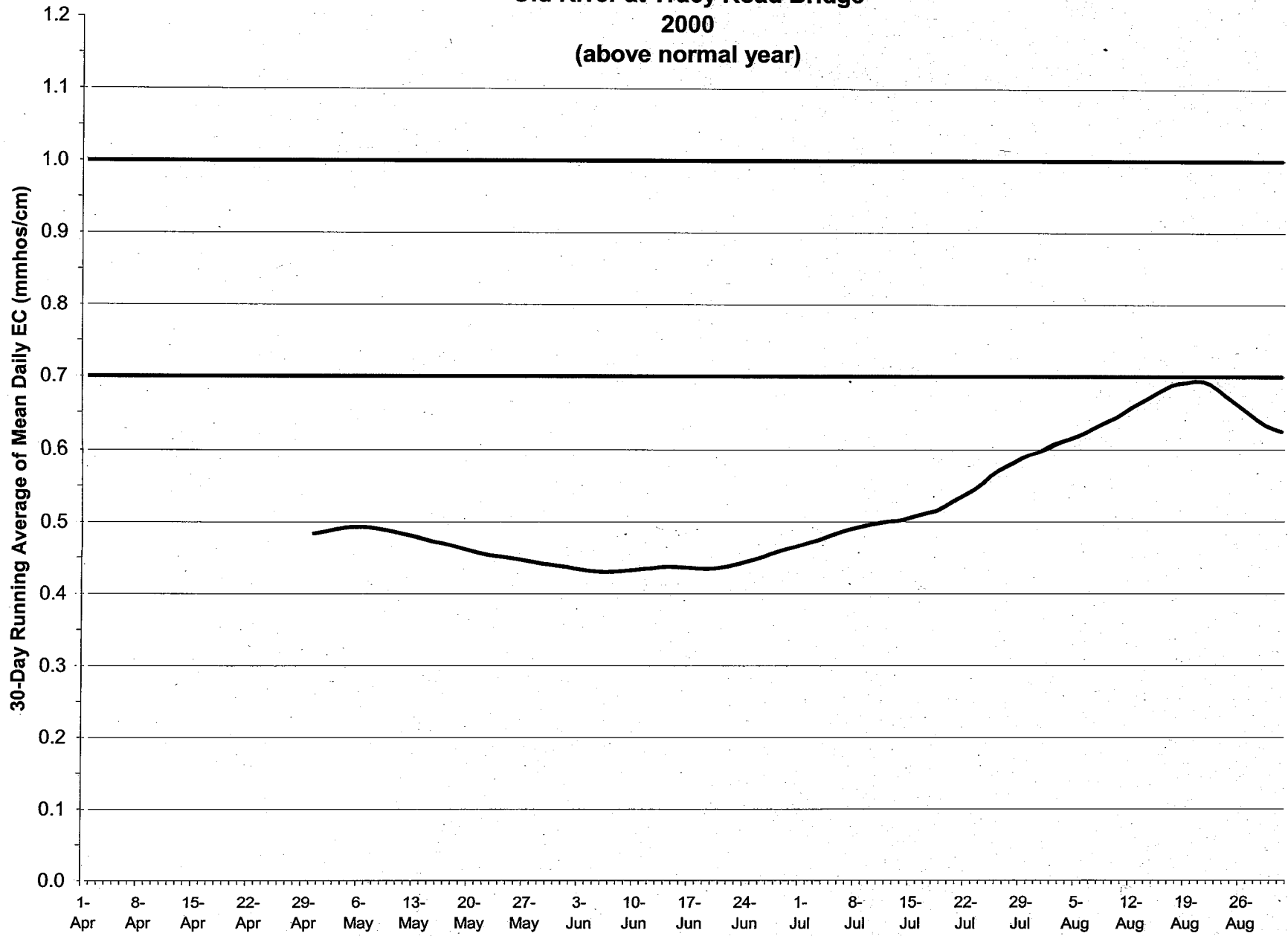
Station P-12  
Old River at Tracy Road Bridge  
1998  
(wet year)



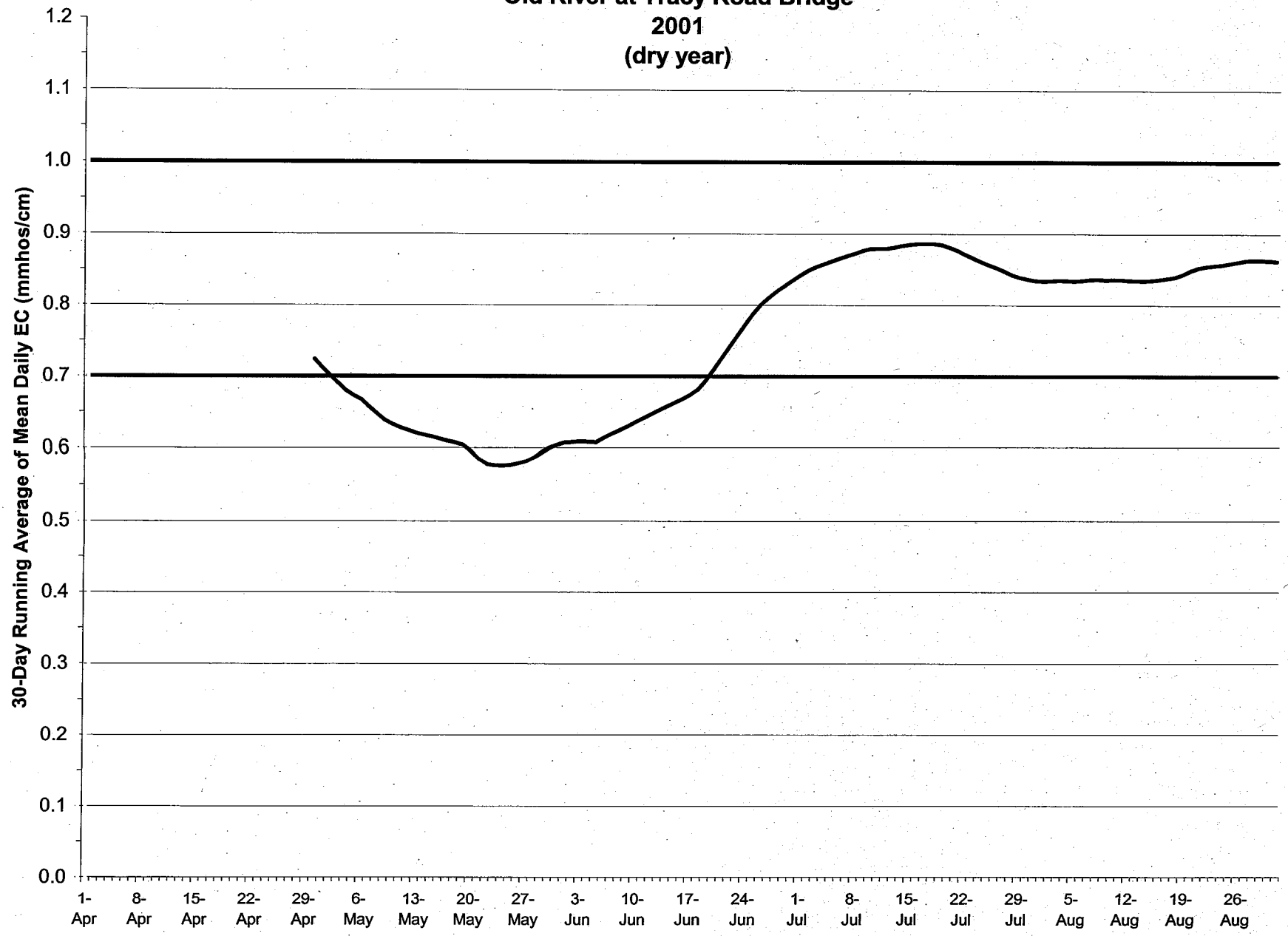
Station P-12  
Old River at Tracy Road Bridge  
1999  
(above normal year)



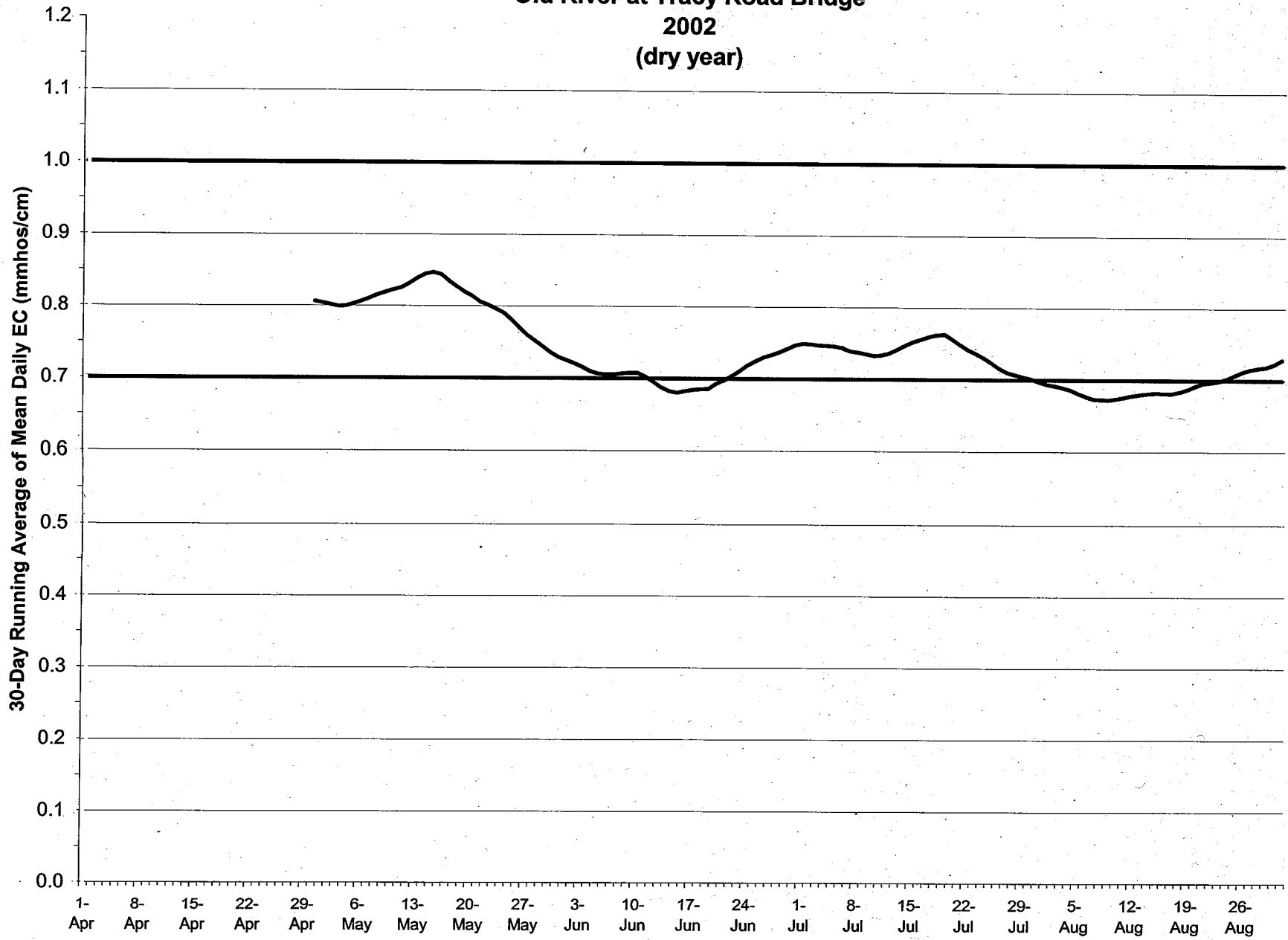
Station P-12  
Old River at Tracy Road Bridge  
2000  
(above normal year)



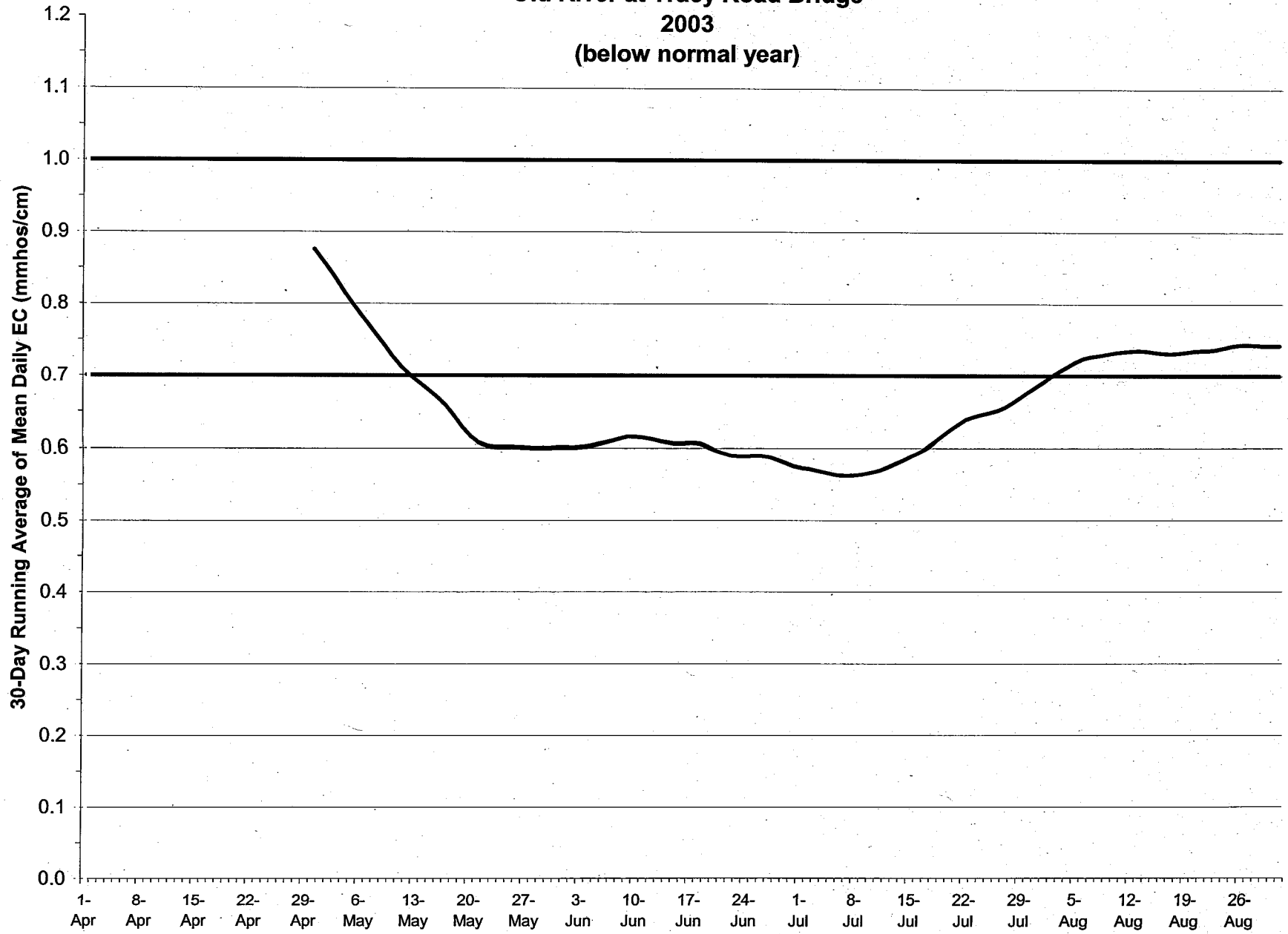
Station P-12  
Old River at Tracy Road Bridge  
2001  
(dry year)



Station P-12  
Old River at Tracy Road Bridge  
2002  
(dry year)

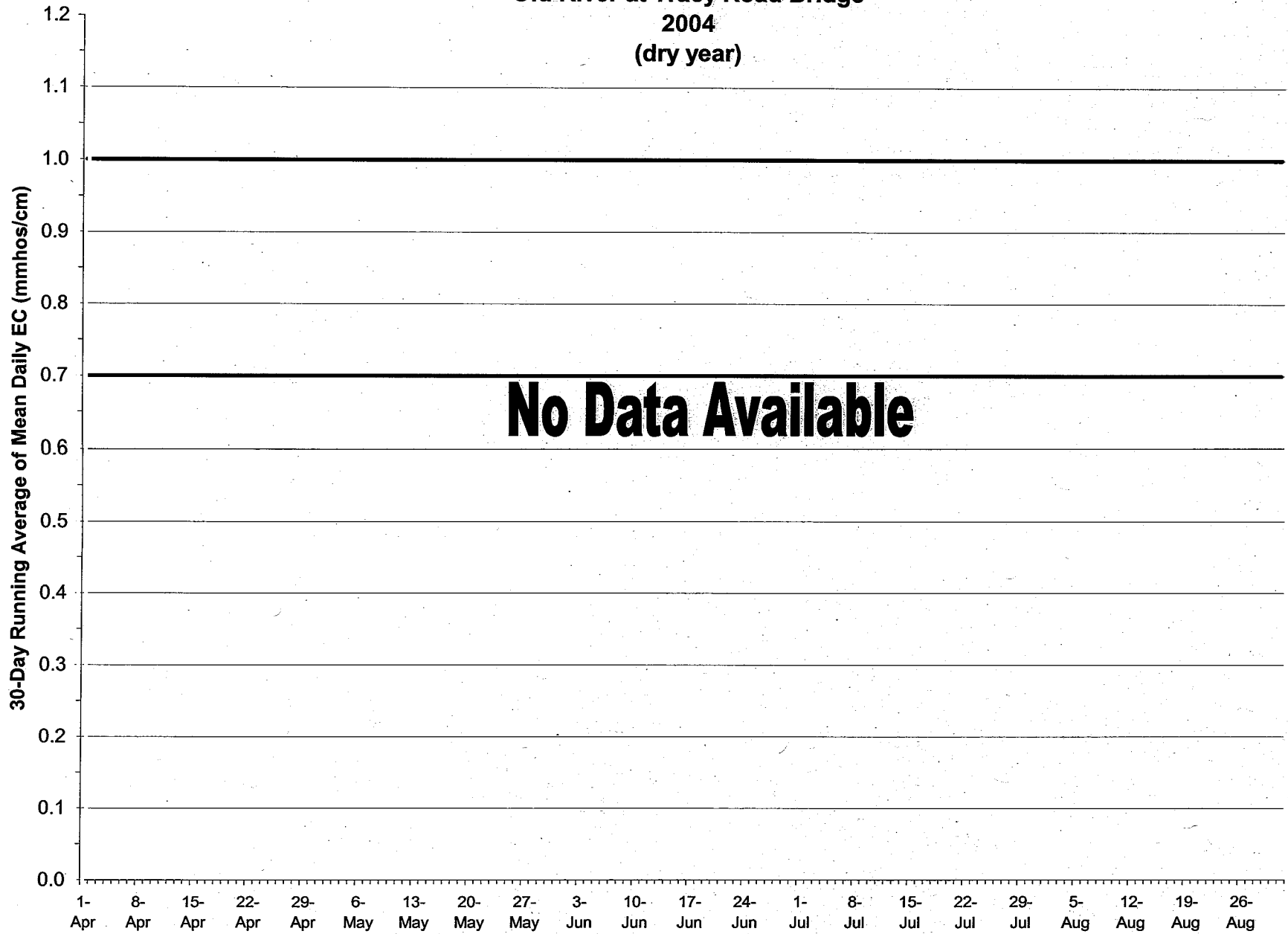


**Station P-12**  
**Old River at Tracy Road Bridge**  
**2003**  
**(below normal year)**





Station P-12  
Old River at Tracy Road Bridge  
2004  
(dry year)



Station P-12  
Old River at Tracy Road Bridge  
2005  
(wet year)

