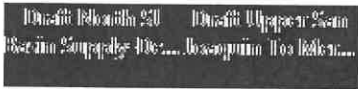


Tauriainen, Andrew@Waterboards

From: Mrowka, Kathy@Waterboards </O=MMS/OU=EXCHANGE ADMINISTRATIVE GROUP (FYDIBOHF23SPDLT)/CN=RECIPIENTS/CN=MROWKA, KATHY@WATERD1188F18-E359-4DA8-A3F2-FC48F57B907E63A>
Sent: Tuesday, May 19, 2015 8:34 AM
To: Coats, Brian@Waterboards; Evoy, Barbara@Waterboards; Trgovcich, Caren@Waterboards; Dadamo, Dorene@Waterboards; Rizzardo, David@DWR; Nemeth, Stephen@DWR; O'Hagan, John@Waterboards; JZOLEZZI@herumcrabtree.com; Herrick, John @aol.com; Jennifer Spaletta (jennifer@spalettalaw.com); Dante Nomellini, Jr. (dantejr@pacbell.net); George, Michael@Waterboards; pminasian@minasianlaw.com; jbuckman@friantwater.org
Subject: San Joaquin River Stakeholder Meeting - Senior Rights



Hi -

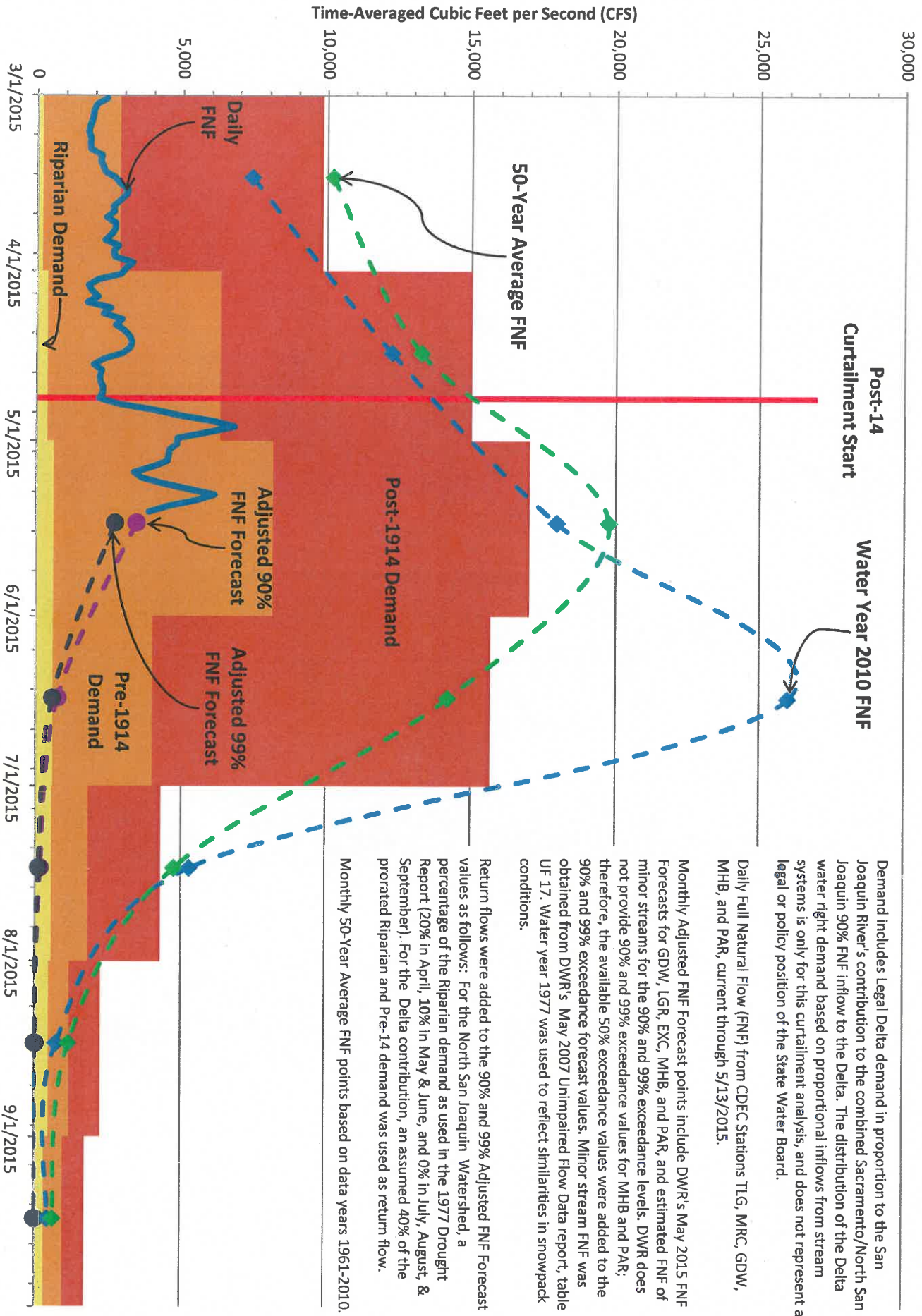
During the stakeholder meeting on curtailment of San Joaquin River pre-1914 rights, the parties asked that we run a separate model run with the upper San Joaquin assumed to have no hydraulic connectivity to the San Joaquin River at Merced. The graph (see Draft Upper San Joaquin to Merced graph) includes all rainfall events through 5-13. We also completed a North SJ Basin River supply graph (Draft North SJ Basin graph) which includes all rainfall events through 5-13. This graph includes the Stanislaus, Tuolumne, Merced, Mokelumne and Cosumnes Rivers and cuts off at the lowermost point where all these sources have joined the San Joaquin River. Page 2 of this document shows the analysis area considered.

Katherine Mrowka, Manager
Enforcement Section
Water Rights
P.O. Box 2000
Sacramento, CA 95814

916-341-5363



2015 North San Joaquin River Basin Supply/Demand



Demand includes legal Delta demand in proportion to the San Joaquin River's contribution to the combined Sacramento/North San Joaquin 90% FNF inflow to the Delta. The distribution of the Delta water right demand based on proportional inflows from stream systems is only for this curtailment analysis, and does not represent a legal or policy position of the State Water Board.

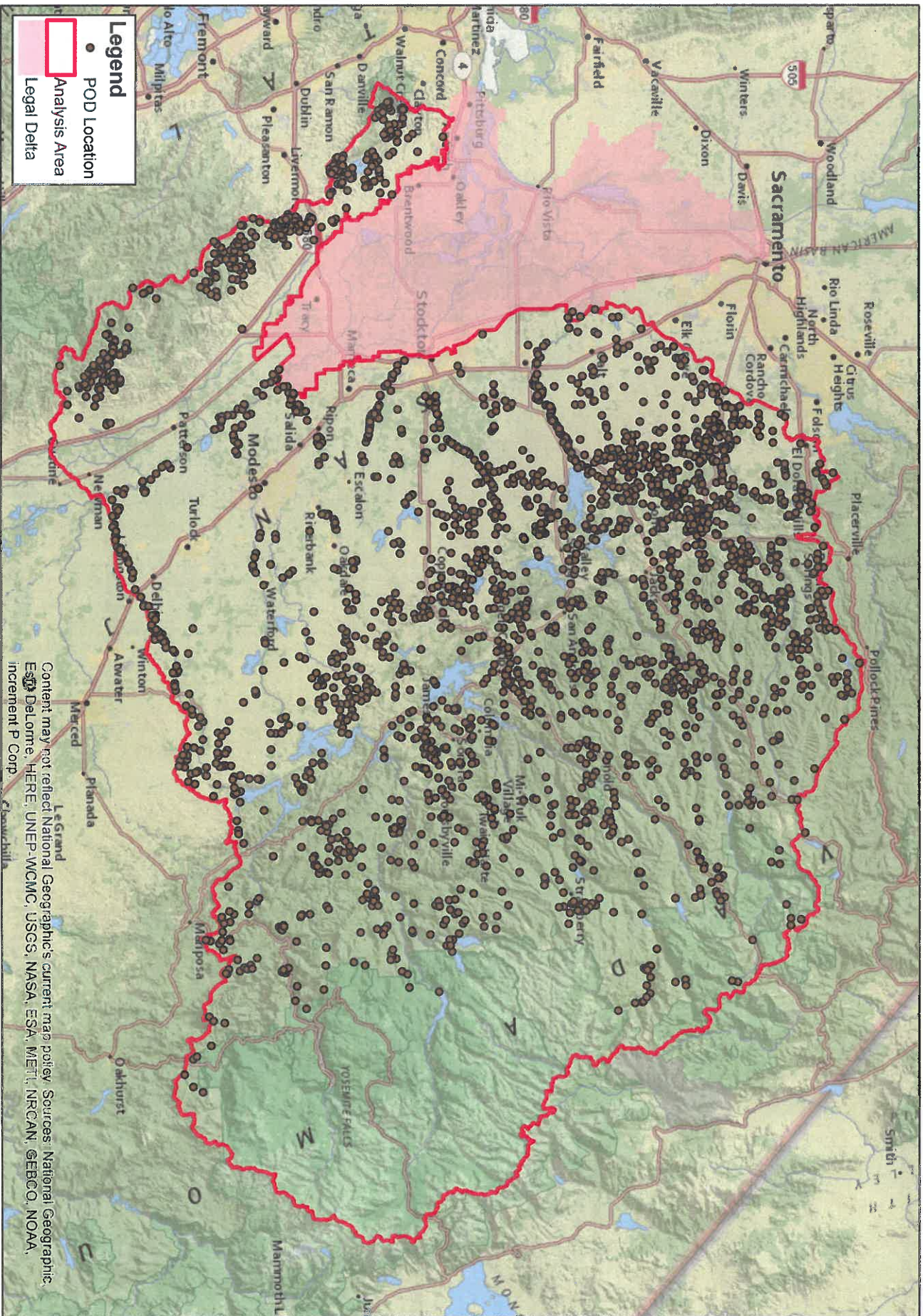
Daily Full Natural Flow (FNF) from CDEC Stations TLG, MRC, GDW, MHB, and PAR, current through 5/13/2015.

Monthly Adjusted FNF Forecast points include DWR's May 2015 FNF Forecasts for GDW, LGR, EXC, MHB, and PAR, and estimated FNF of minor streams for the 90% and 99% exceedance levels. DWR does not provide 90% and 99% exceedance values for MHB and PAR; therefore, the available 50% exceedance values were added to the 90% and 99% exceedance forecast values. Minor stream FNF was obtained from DWR's May 2007 Unimpaired Flow Data report, table UF 17. Water year 1977 was used to reflect similarities in snowpack conditions.

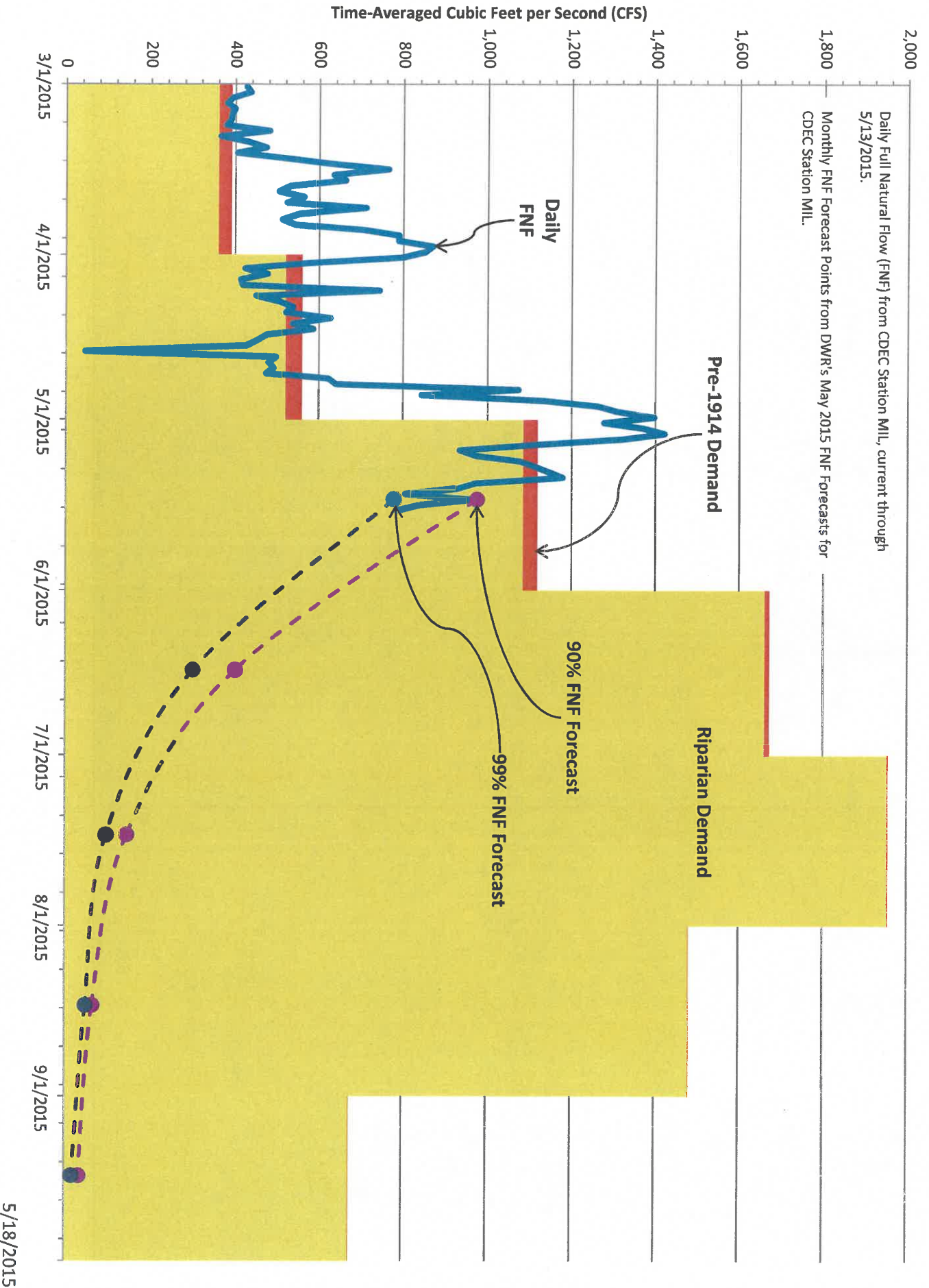
Return flows were added to the 90% and 99% Adjusted FNF Forecast values as follows: For the North San Joaquin Watershed, a percentage of the Riparian demand as used in the 1977 Drought Report (20% in April, 10% in May & June, and 0% in July, August, & September). For the Delta contribution, an assumed 40% of the prorated Riparian and Pre-14 demand was used as return flow.

Monthly 50-Year Average FNF points based on data years 1961-2010.

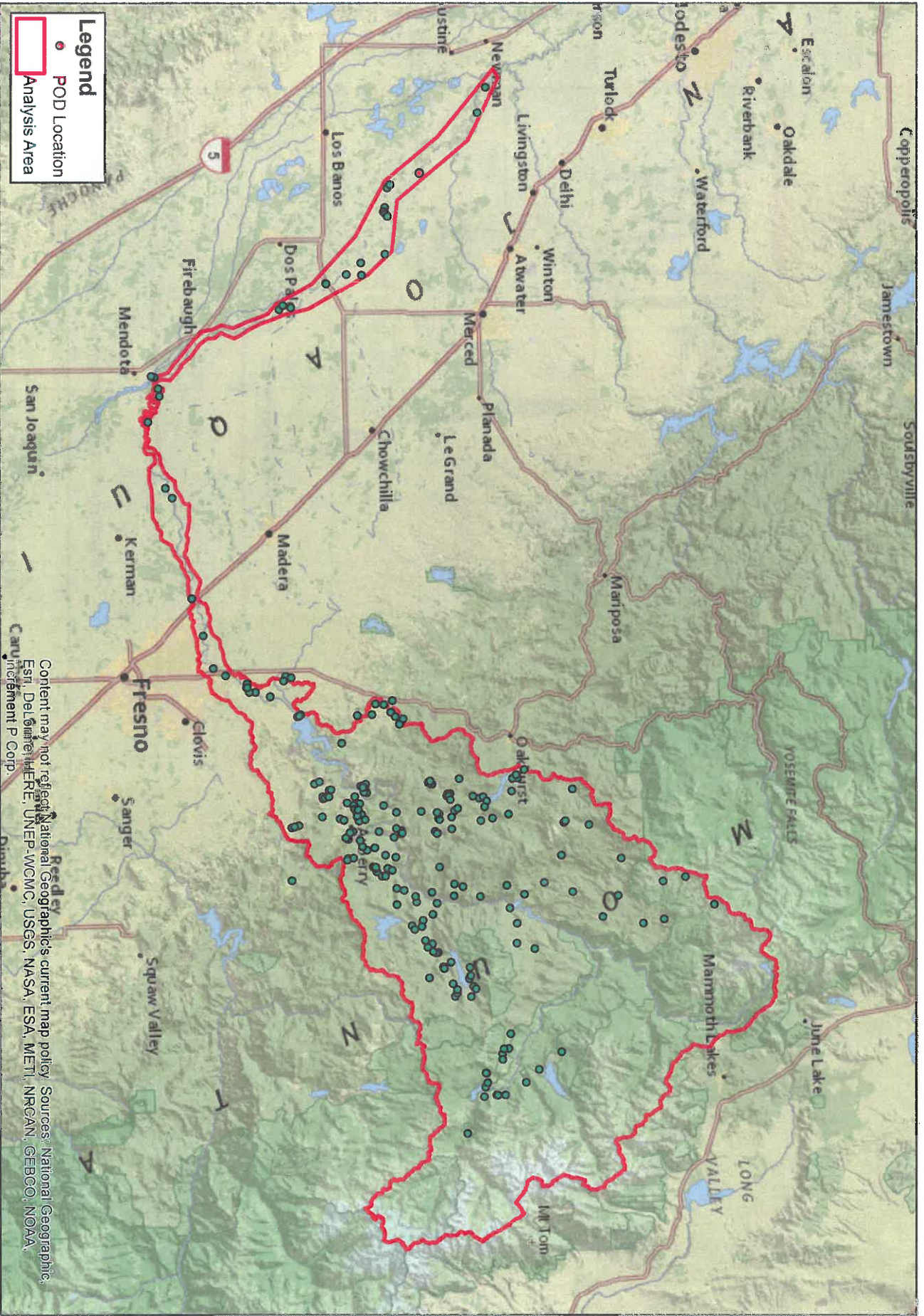
POD LOCATIONS OF WATER RIGHTS USED IN NORTH SAN JOAQUIN RIVER BASIN SUPPLY/DEMAND ANALYSIS



2015 Upper San Joaquin River To Merced River Senior Supply/Demand



POD LOCATIONS OF WATER RIGHTS USED IN UPPER SAN JOAQUIN RIVER TO MERCED RIVER SUPPLY/DEMAND ANALYSIS



Content may not reflect National Geographic's current map policy. Sources: National Geographic, Esri, DeLorme, HERE, UNEP-WCMC, USGS, NASA, ESA, METI, NRCAN, GEBCO, NOAA, Swatch, etc.