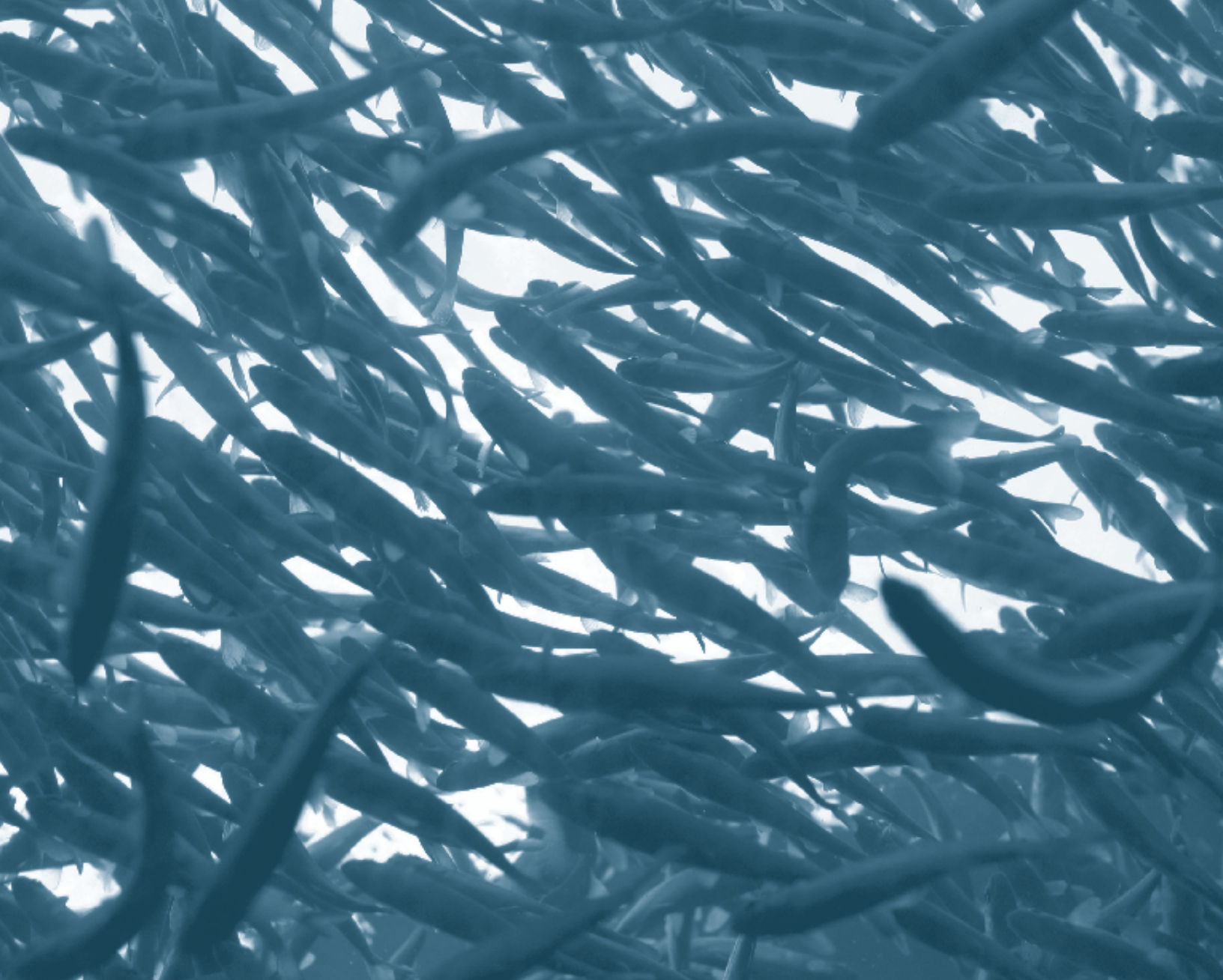
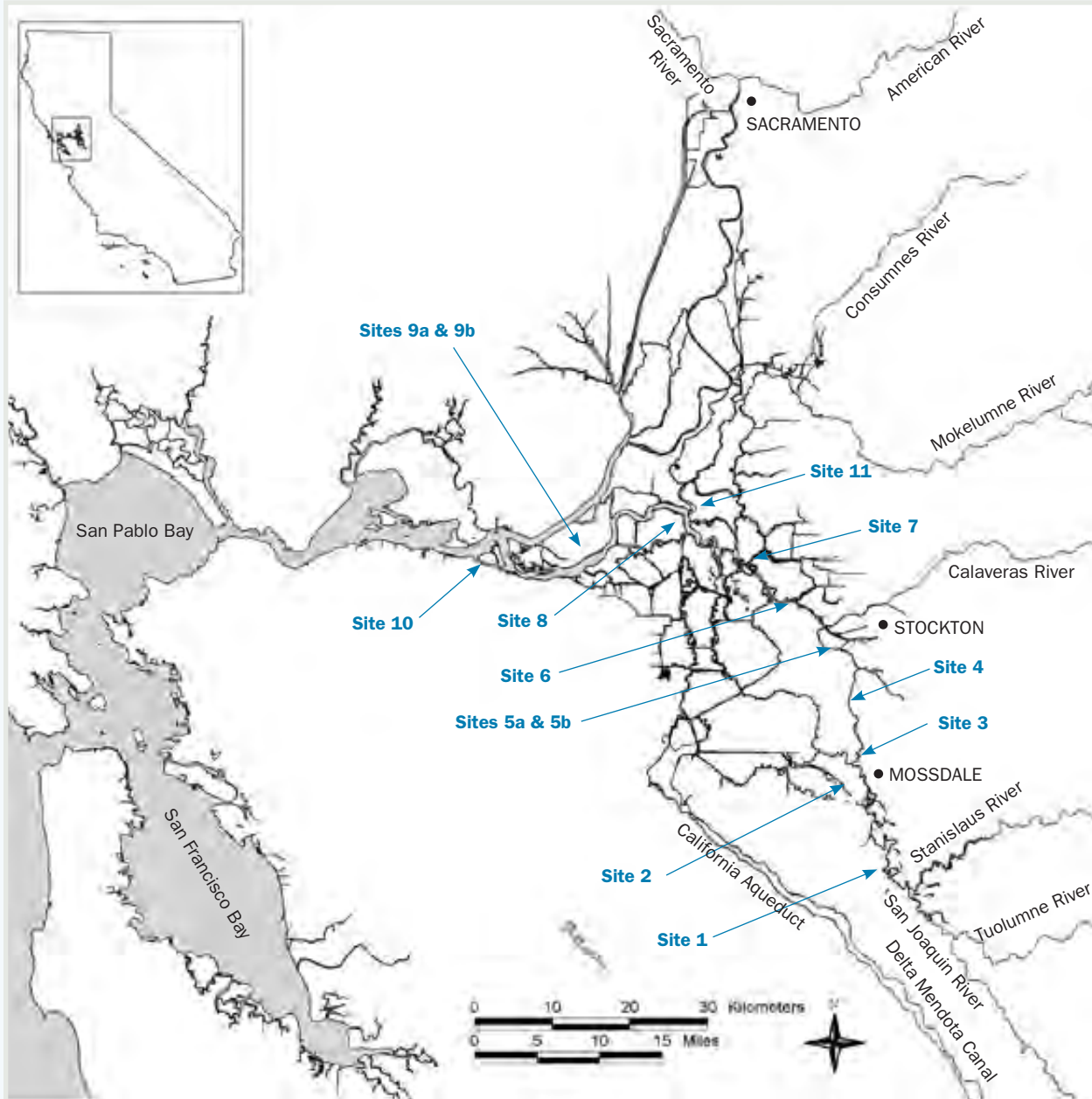


Appendix C

Chinook Salmon Survival Investigations



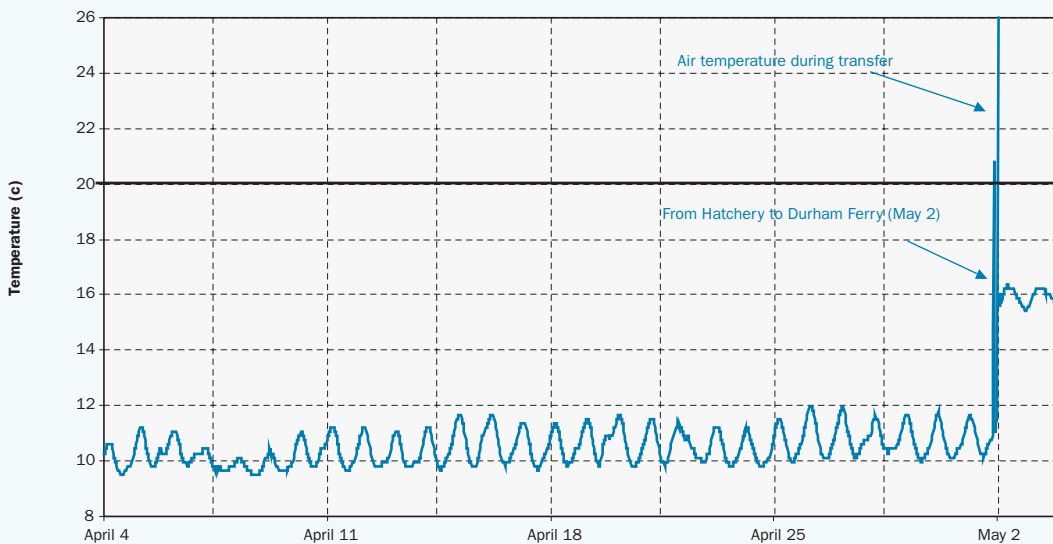
Appendix C-1
Water Temperature Monitoring Locations



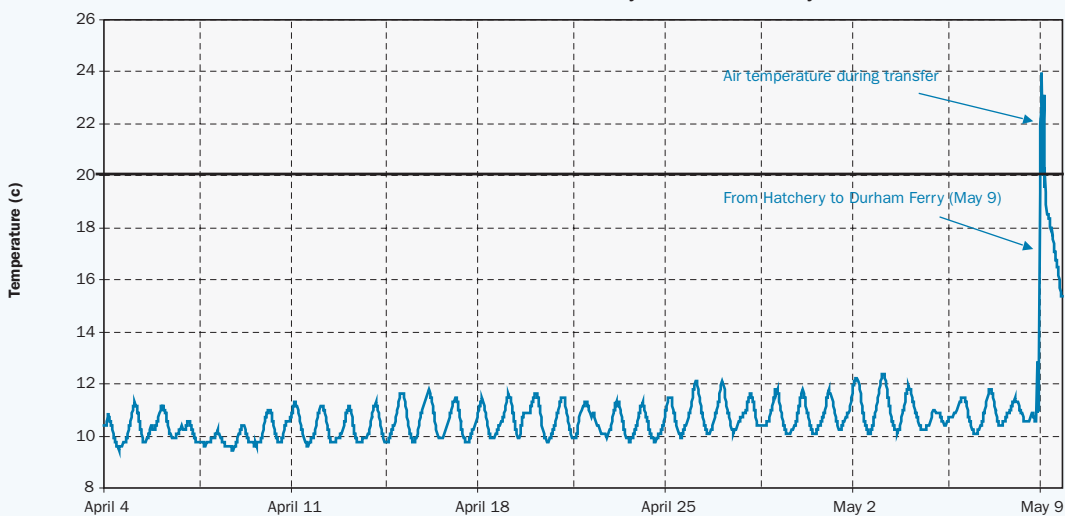
**Appendix C-1
VAMP 2005 Water Temperature Monitoring**

Site #	Temperature Monitoring Location	Latitude	Longitude	Distance from Durham Ferry (mi)	Date Deployed	Date Retrieved	Notes
	Merced River Hatchery - 1			n/a	April 4	May 4	In river May 2 at Durham Ferry
	Merced River Hatchery - 2			n/a	April 4	May 11	In river May 9 at Durham Ferry
1	Durham Ferry	N 37 41.381	W 121 15.657	n/a	April 15	June 15	3 foot depth
2	Mosssdale	N 37 47.180	W 121 18.425	11.2	April 15	June 15	3 foot depth
3	Dos Reis	N 37 49.808	W 121 18.665	16.4	April 15	-	Unable to locate logger
4	DWR Monitoring Station	N 37 51.869	W 121 19.376	19.4	April 15	-	Unable to locate logger
5a	Confluence – Top	N 37 56.818	W 121 20.285	26.5	April 15	June 15	Logger was dewatered – unable to use data
5b	Confluence- Bottom	N 37 56.818	W 121 20.285	26.5	April 15	June 15	Logger located on bottom.
6	Downstream of Channel Marker 30	N 37 59.776	W 121 25.569	33.3	April 15	June 15	3 foot depth
7	1/2 mile Upstream of Channel Marker 13	N 38 01.940	W 121 28.769	37.3	April 15	June 15	3 foot depth
8	Downstream of Channel Marker 36	N 38 04.522	W 121 34.413	44.7	April 15	June 15	3 foot depth
9	Jersey Point USGS Gauging Station - Top	N 38 03.172	W121 41.637	56.0	April 15	June 15	3 foot depth
10	Chipps Island	N 38 03.084	W 121 55.463	71.5	April 15	-	Unable to locate logger
11	Mokelumne River-Lighthouse Marina	N 38 06.334	W 121 34.213	40.0	April 15	June 15	3 foot depth

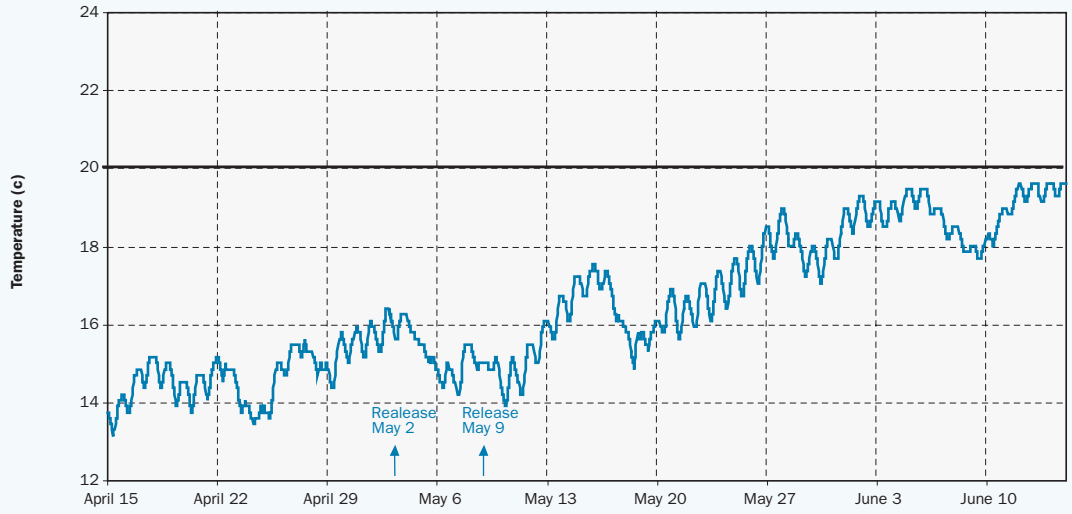
Appendix C-2
 Water Temperature Monitoring
 Merced River Fish Hatchery to Durham Ferry



Appendix C-2
 Water Temperature Monitoring
 Merced River Fish Hatchery to Durham Ferry



Appendix C-2
Water Temperature Monitoring
Site 1 Durham Ferry



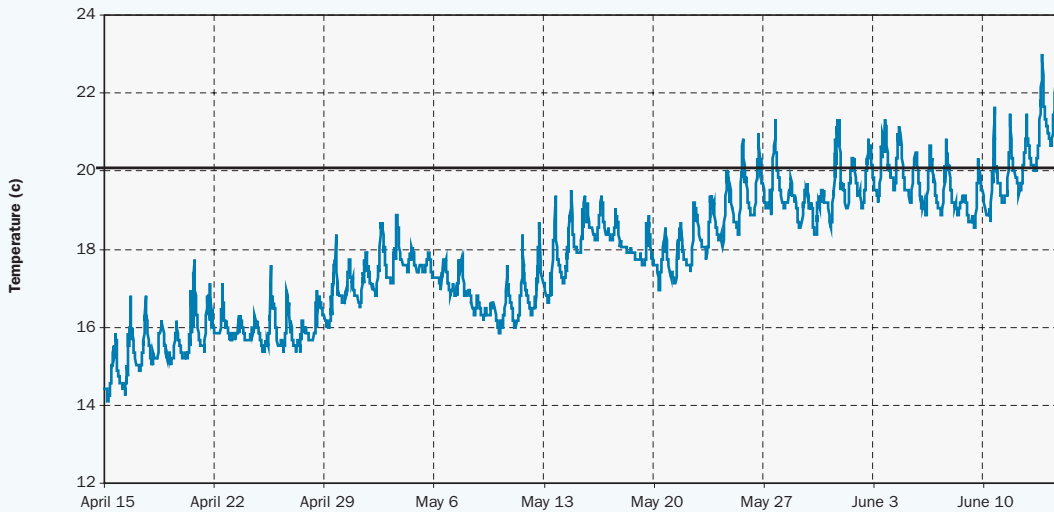
Appendix C-2
Water Temperature Monitoring
Site 2 - Mossdale



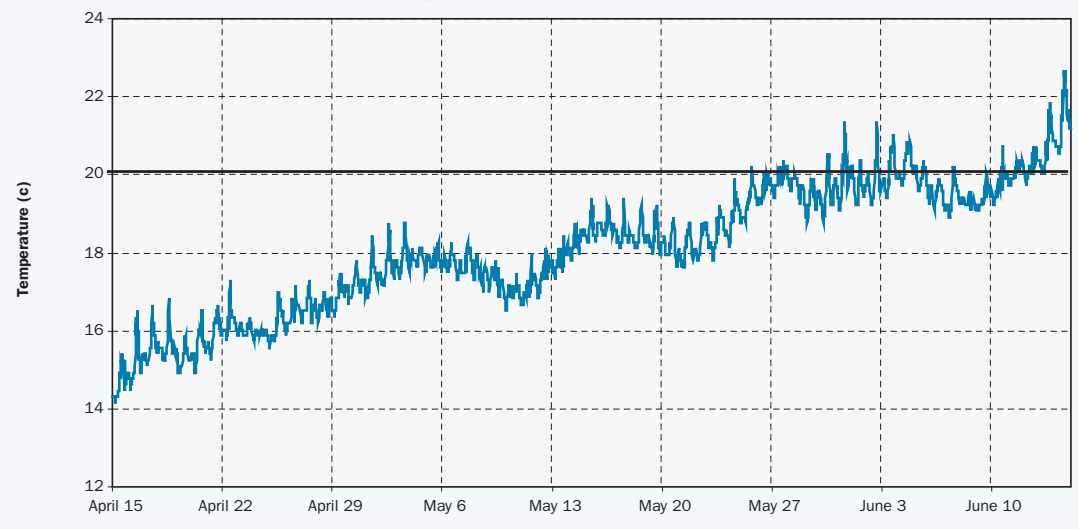
Appendix C-2
 Water Temperature Monitoring
 Site 5b - Confluence-Bottom



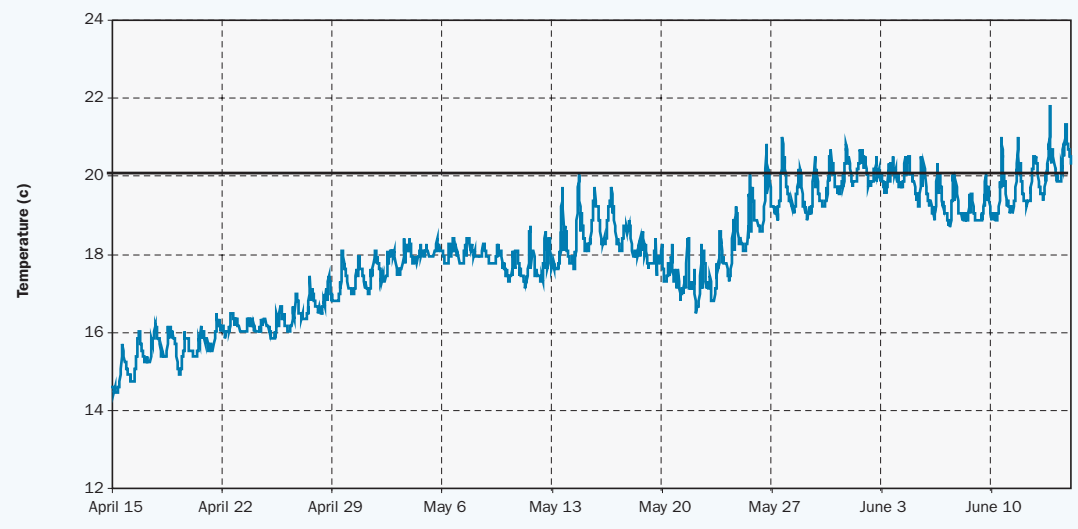
Appendix C-2
 Water Temperature Monitoring
 Site 6 - Downstream of Channel Marker 30



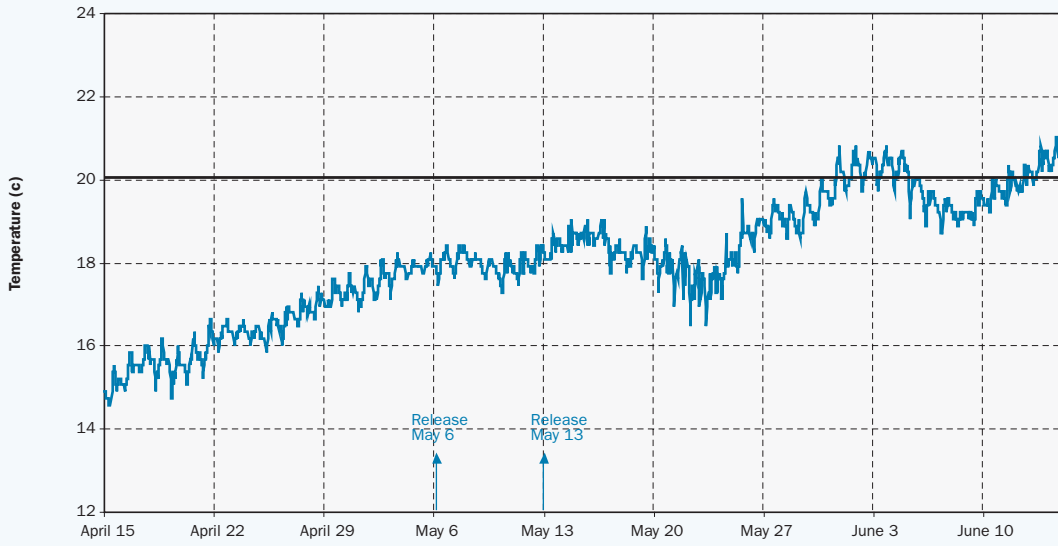
Appendix C-2
Water Temperature Monitoring
Site 7 - 1/2 Mile Upstream of Channel Marker 13



Appendix C-2
Water Temperature Monitoring
Site 8 - Downstream of Channel Marker 36



Appendix C-2
 Water Temperature Monitoring
 Site 9 - USGS Gauging Station at Jersey Point - Top



Appendix C-2
 Water Temperature Monitoring
 Site 11 - Mokelumne River - Lighthouse Marina



Appendix C-3a
Salmon Smolt Condition Post Transport, Immediately After Release

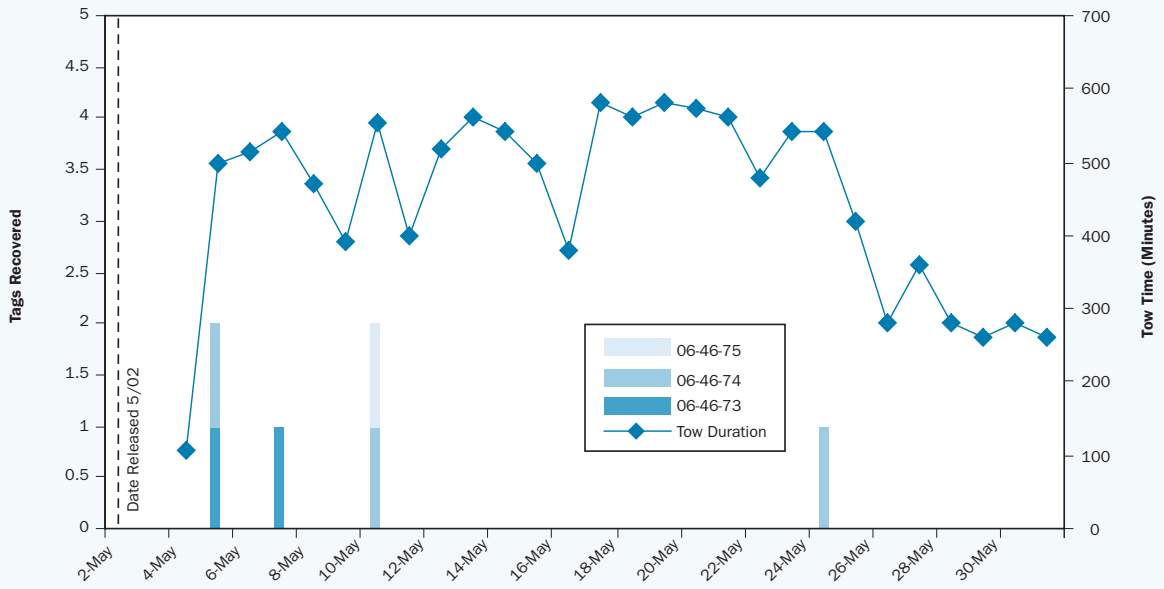
Release Site	Examination Date	Mean Fork Length (mm)	Mean Weight (g)	Vigor (%)	Mean Scale Loss (%)	Normal Body Color (%)	Fin Hemorrhaging (%)	Normal Eye Quality (%)	Normal Gill Color %	Complete Adclip (%)	% Correct Tag Code*
Durham Ferry	5/2/05	85	7	100	3	100	0	100	100	90	100
Dos Reis	5/3/05	86	7	100	3	100	0	100	100	88	100
Jersey Point	5/6/05	83	7	100	3	100	0	98	100	90	100
Durham Ferry	5/9/05	83	10	100	12	100	0	100	100	94	100
Dos Reis	5/10/05	87	7	100	6	100	0	100	100	76	100
Jersey Point	5/13/05	85	7	100	2	100	0	100	100	74	100

* % correct tag code of those that retained tags.

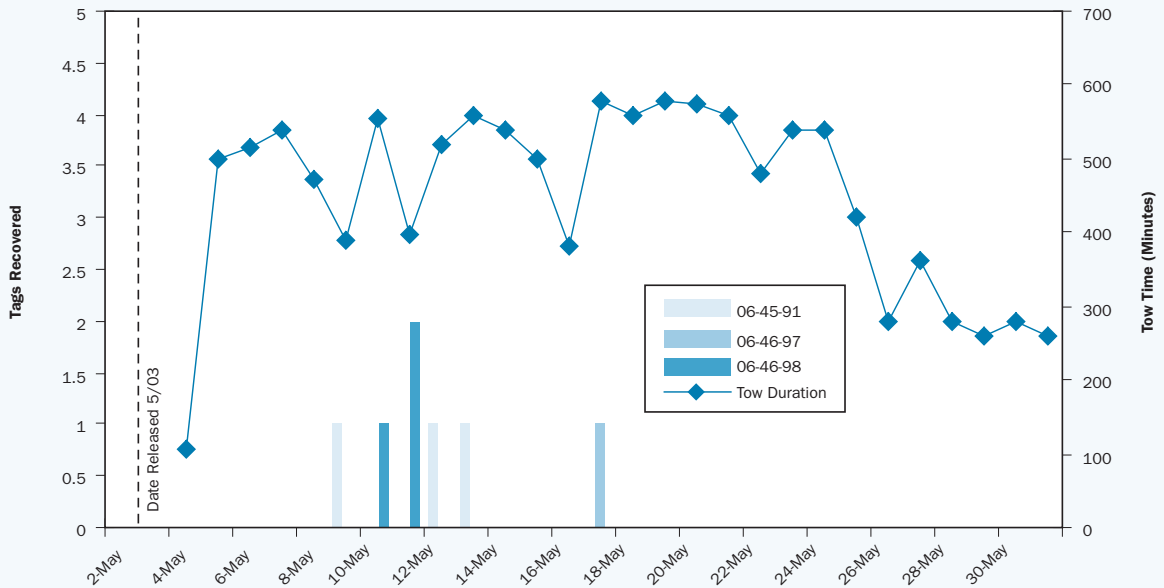
Appendix C-3b
Salmon Smolt Condition 48-hours Post Release

Release Site	Examination Date	Mean Fork Length (mm)	Mean Weight (g)	Vigor (%)	Mean Scale Loss (%)	Normal Body Color (%)	Fin Hemorrhaging (%)	Normal Eye Quality (%)	Normal Gill Color %	Complete Adclip (%)
Durham Ferry	5/4/05	84	7	100	9	96	0	100	100	74
Dos Reis	5/5/05	85	7	100	8	98	0	96	100	78
Jersey Point	5/8/05	86	7	100	7	98	2	98	100	84
Durham Ferry	5/11/05	84	6	100	7	100	0	98	100	68
Dos Reis	5/12/05	85	7	100	3	100	0	98	98	76
Jersey Point	5/15/05	87	7	100	3	100	0	100	100	70

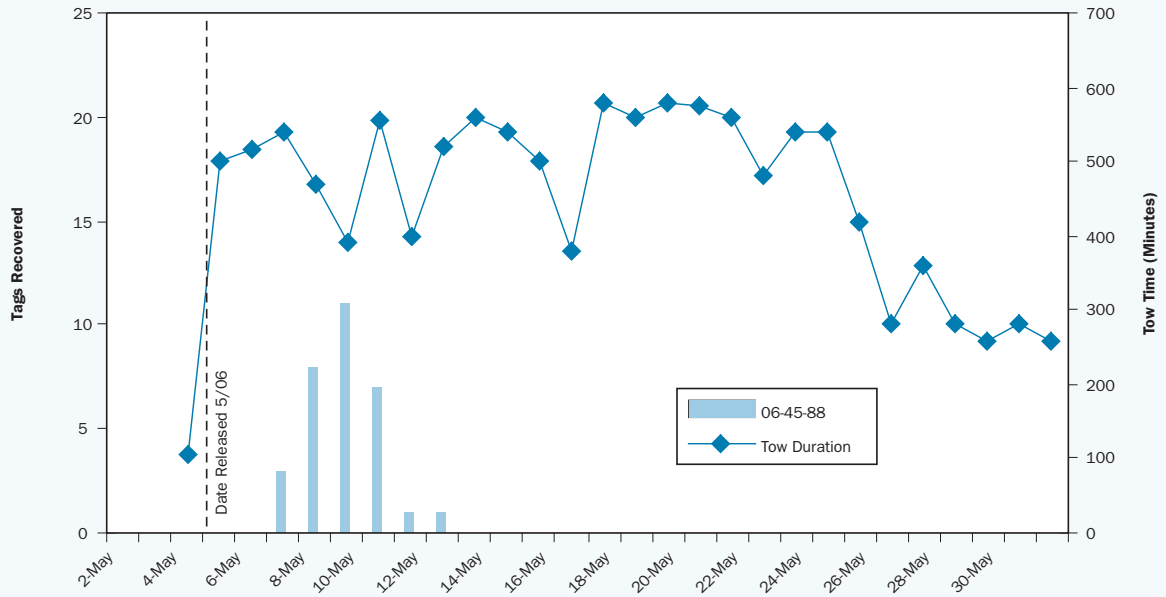
Appendix C-4, Figure 1
Antioch/Durham Ferry 1



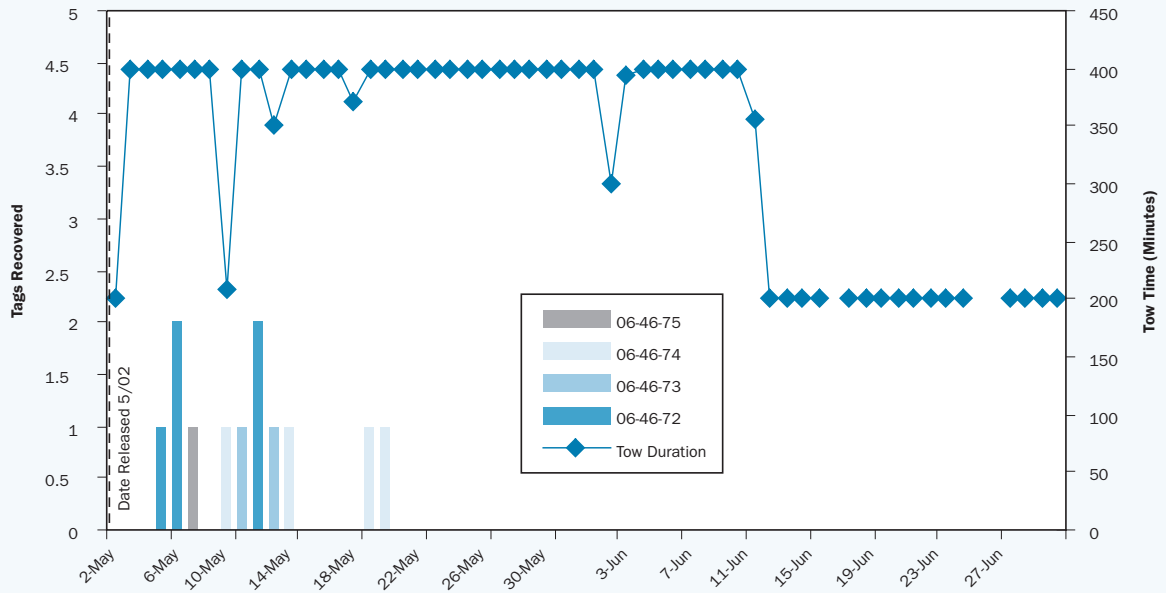
Appendix C-4, Figure 2
Antioch/Dos Reis 1



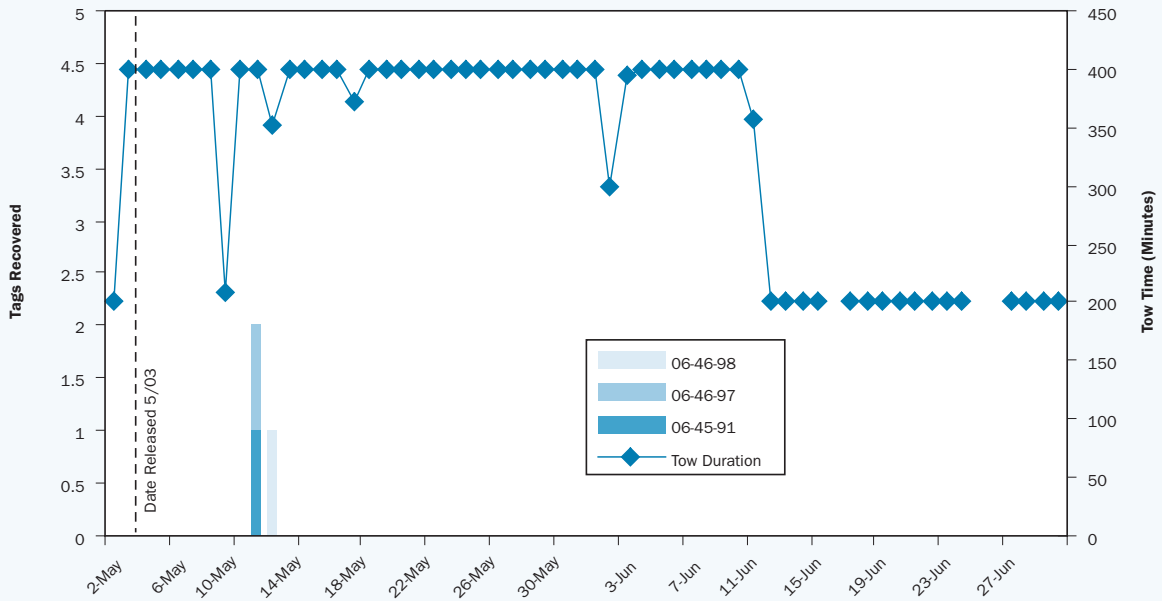
Appendix C-4, Figure 3
Antioch/Jersey Point 1



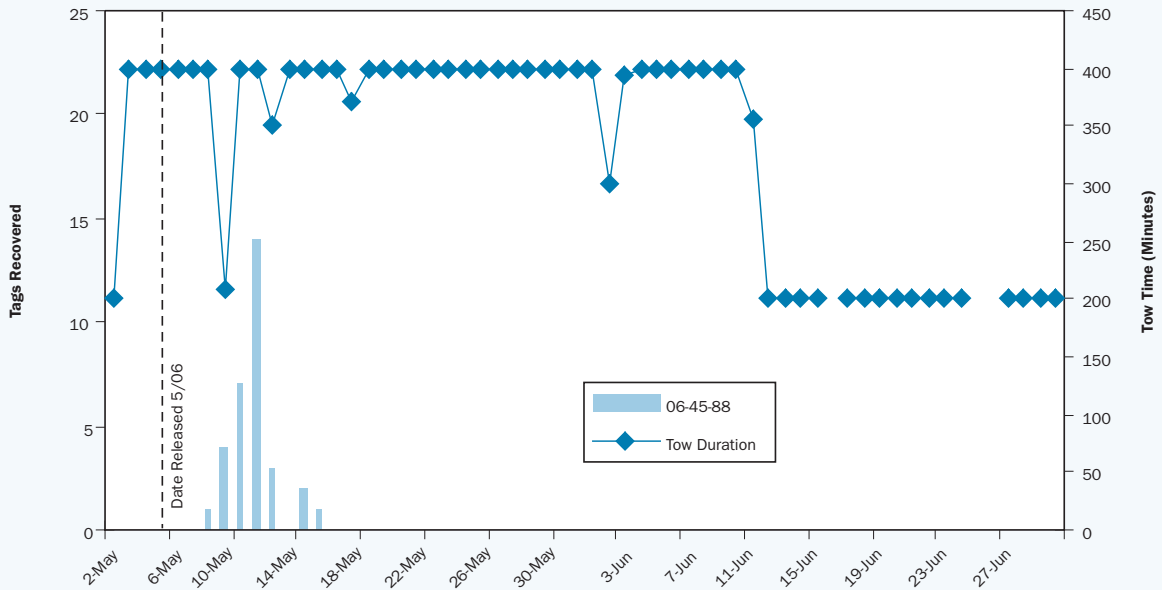
Appendix C-4, Figure 4
Chippis Island/Durham Ferry 1



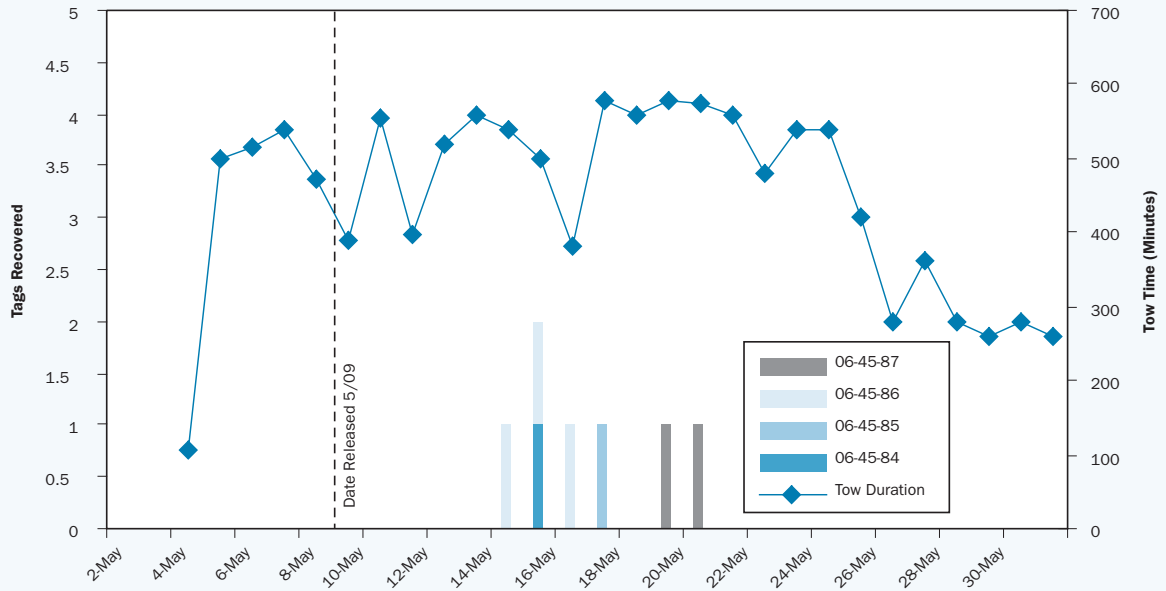
Appendix C-4, Figure 5
Chippis Island/Dos Reis 1



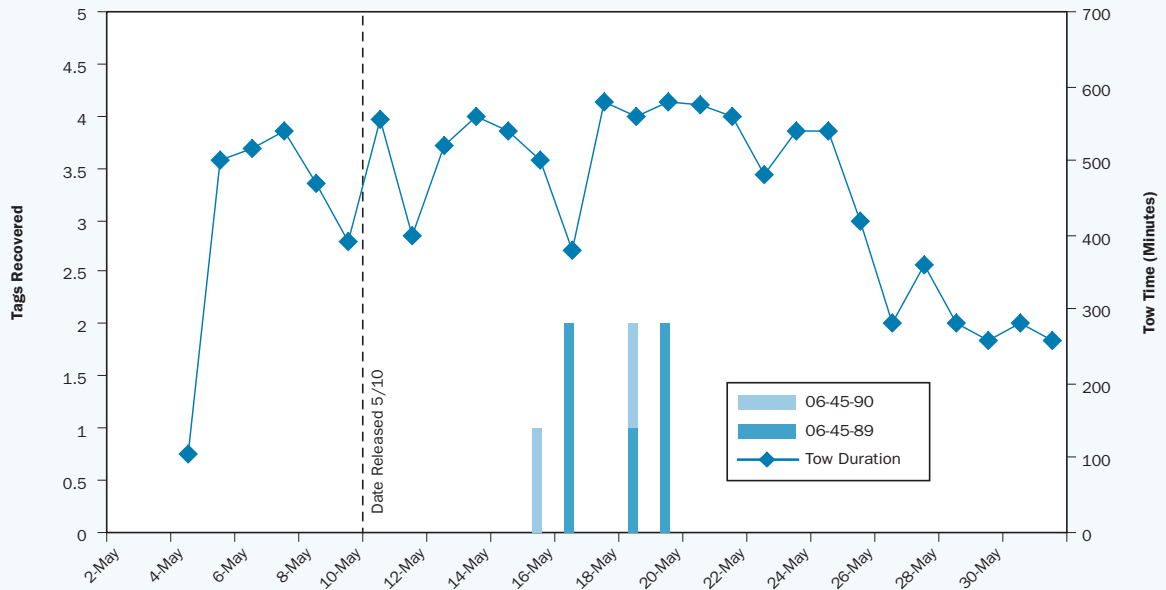
Appendix C-4, Figure 6
Chippis Island/Jersey Point 1



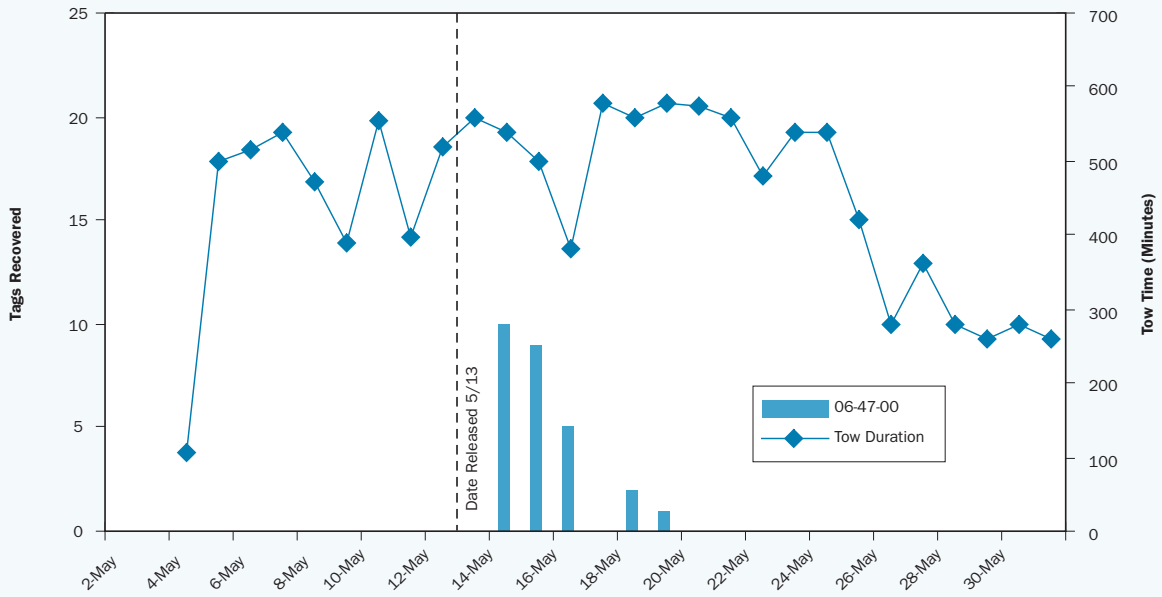
Appendix C-4, Figure 7
Antioch/Durham Ferry 2



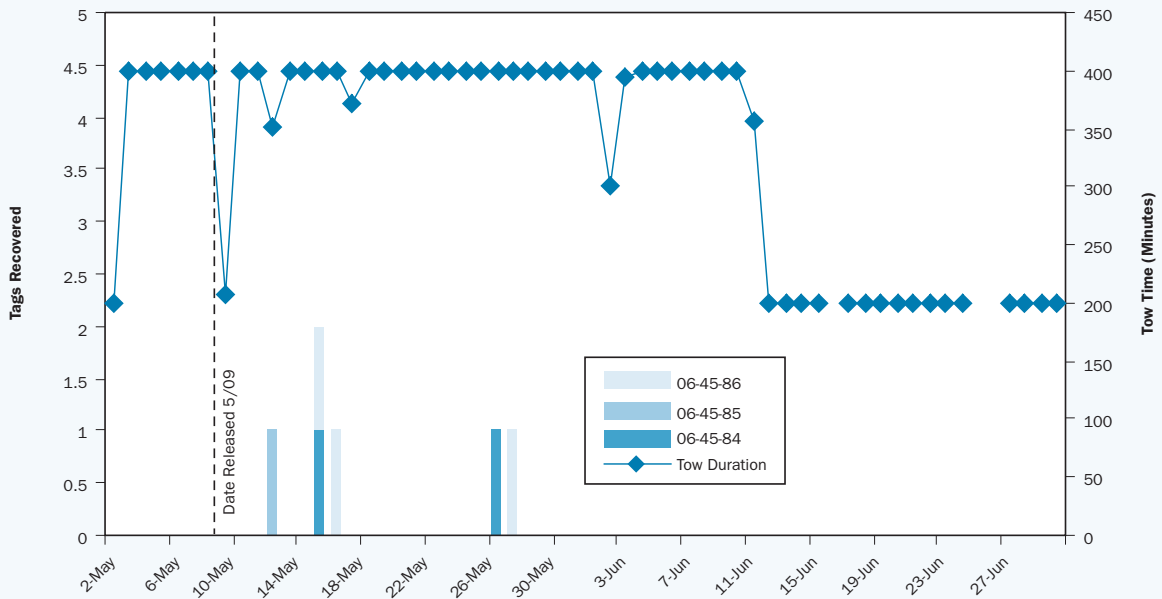
Appendix C-4, Figure 8
Antioch/Dos Reis 2



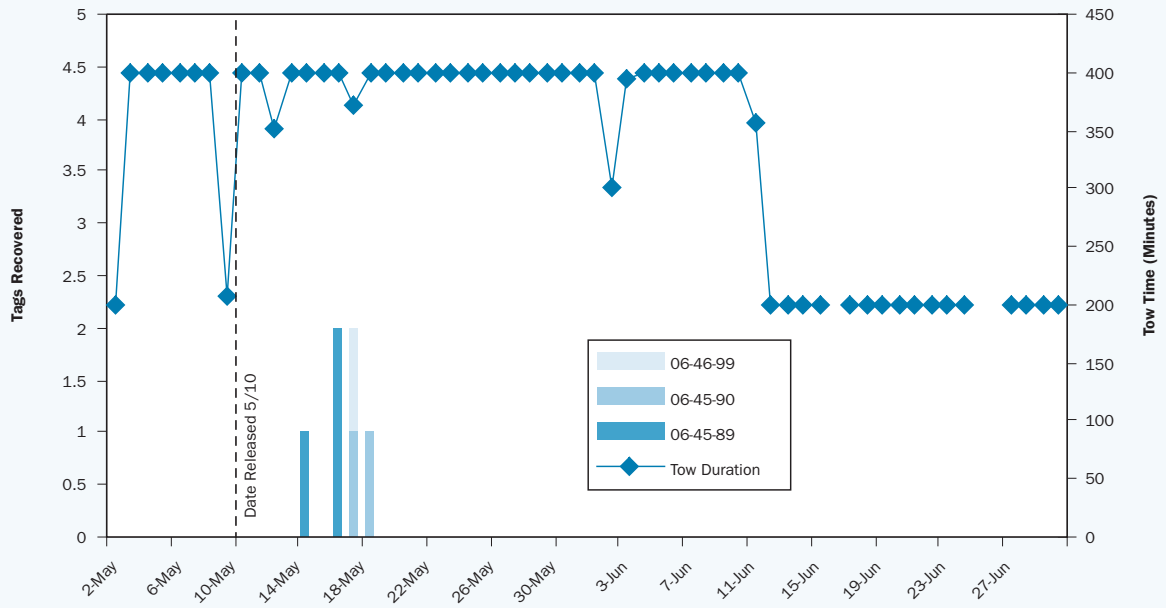
Appendix C-4, Figure 9
Antioch/Jersey Point 2



Appendix C-4, Figure 10
Chippis Island/Durham Ferry 2



Appendix C-4, Figure 11
Chipps Island/Dos Reis 2



Appendix C-4, Figure 12
Chipps Island/Jersey Point 2

