

## Errata to

“Amendment of the Bay-Delta Water Quality Control Plan’s Compliance  
and Baseline Monitoring Program”

Presented to the State Water Resources Control Board by Stephen Ford (DWR) and  
Erwin Van Nieuwenhuysse (Reclamation) on October 27, 2004

The original text should be revised as shown below in underline and in **bold font** to correct substantive errors identified after the document was submitted.

Enclosed with this Errata is a revision of the original document showing the substantive changes below and some minor non-substantive clarifying edits. The revised document is titled “Revised Comments on Proposed Amendments of the Bay-Delta Water Quality Control Plan’s Compliance and Baseline Monitoring Program, November 30, 2004.”

**CORRECTIONS**

1. Replace page 1, bulleted list, bullet 2, with:
  - Compliance monitoring at **3** stations:
    - “Compliance Stations” **C9, C10** and D22
  
2. Replace page 2, paragraph 2, with:
 

The Program **described in the 1995 Plan** consists of **43** monitoring stations in the upper San Francisco Bay-Delta estuary, extending from the Sacramento River at Hood to the San Joaquin River at Vernalis and west into San Pablo Bay (Figure 1). Of these, twenty stations are operated as “Compliance Monitoring Stations”, to ensure compliance with the water quality objectives. Fifteen stations are “Baseline Monitoring Stations”, operated to identify changes in the estuary. The remaining **eight** are “Compliance and Baseline Monitoring Stations”, which include a mixture of compliance and baseline monitoring elements.
  
3. Replace page 5, numbered list, item 4) with:
  - 4) Modify sampling interval description in footnotes to Table **4**
  
4. Replace Page 5, first bulleted list, bullets 2 and 3, with:
  - **12** monitoring elements would remain unchanged
  - **10** historically monitored elements would be reestablished. This includes more clearly reflecting in Table 4 the ongoing compliance monitoring (electrical conductivity and chloride) that occurs at **stations C9, C10, and D22**
  
5. Replace Page 5, second bulleted list, bullet 4, with:
  - **1** historically monitored element would be removed

6. Replace Page 6, paragraph 2, sentence 3, with:  
**The left portions** of Tables 1-3 of this document show the new layout and information that would be included in the revision of the Plan's Table 4.
7. Replace **Figures 2 and 3** with the updated versions provided below.
8. Replace **Tables 1, 2, and 3** with the updated versions provided below.

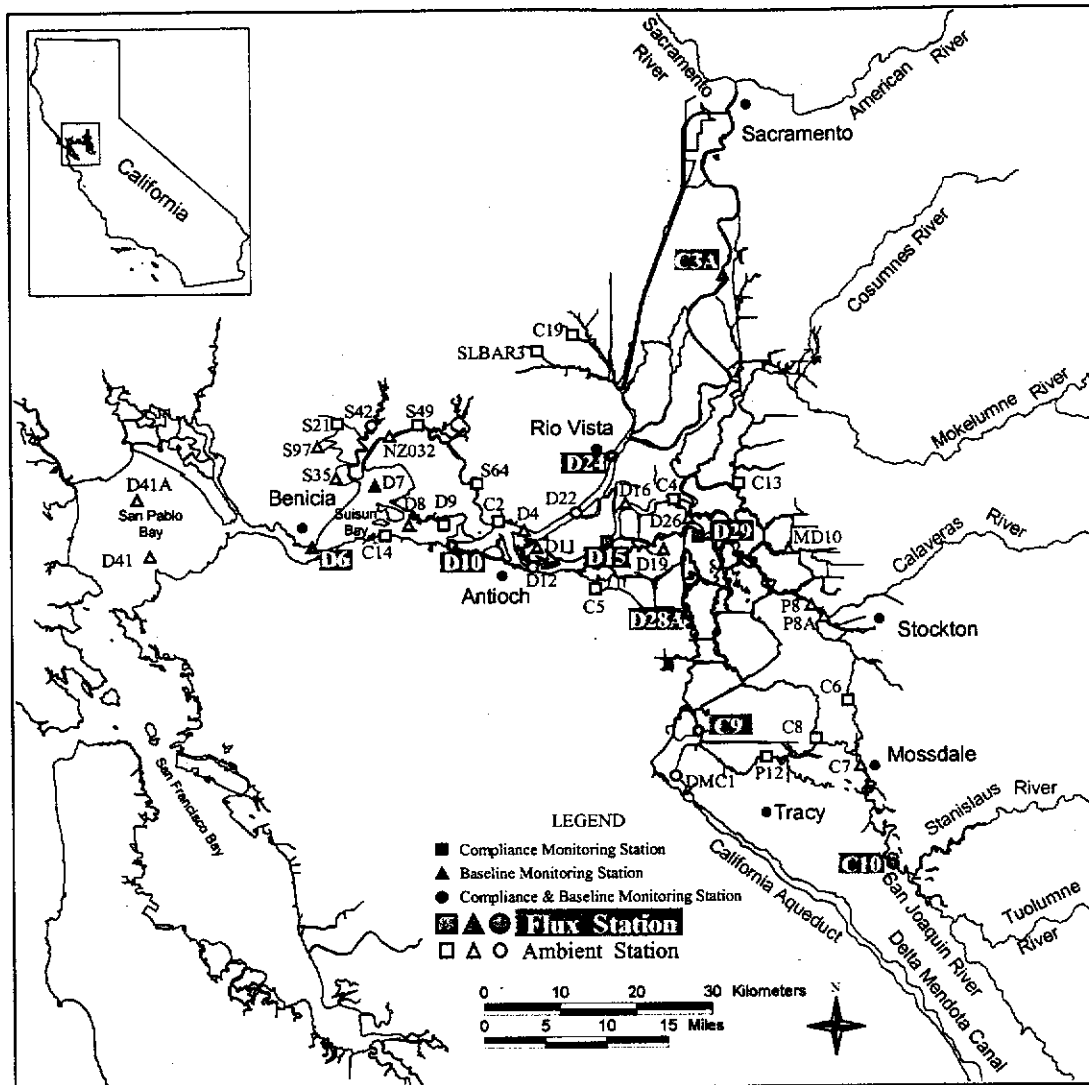


Figure 2: Conceptual Design of Water Quality Compliance and Baseline Monitoring Program

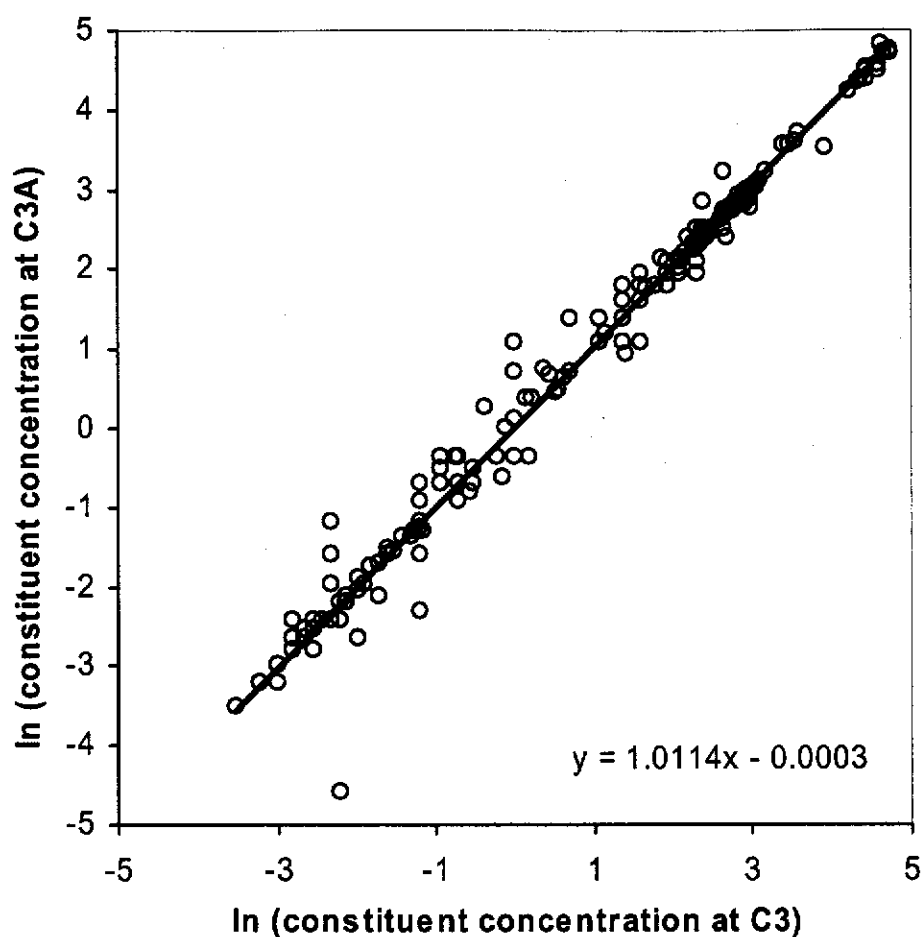


Figure 3: Comparison of Greens Landing (C3) and Hood (C3A) Monitoring Stations (July 2003-June 2004, 16 constituents, Deming regression and Bias plots: no significant differences between stations (see Triboli et al, IEP newsletter 2003(4):13-24 for statistical analysis techniques))

Table 1: Changes at "Compliance" and "Baseline" Monitoring Stations

Station Number	Station Type	Station Description	Lat.	Long.	Cont. Recorder	Cont. Multiparameter	Discrete Physical/Chemical	Discrete Phytoplankton	Discrete Zooplankton	Discrete Benthos	Water Quality Objectives in 1995 B-D Plan	Rationale for Change
C9	●	West Canal @ Mouth of CC Forebay Intake	37.83075	-121.55703		Reinstate (Ongoing)	Reinstate	No change	Reinstate	No change	CI (Table 1), EC (Table 2)	Water Quality Objective; Flux station (exports); Continuous data QA/QC
			37.82818	-121.55275								
C10	●	San Joaquin River near Vernalis	37.67575	-121.265	Reinstate (Ongoing)	Add	Move from	Move from	Add		CI (Table 1), EC (Table 2), Flow (Table 3)	Flux station (imports); Southern "rim"; Long & highly utilized data set; Improved safety at new location
			37.67934	-121.26472								
D10	●	Sacramento River @ Chippis Island	38.04288	-121.92011		No change	Reinstate		No change		EC (Table 3, Footnote 14)	Continuous data QA/QC
			38.04631	-121.91829								
D12	●	San Joaquin River @ Antioch Ship Channel	38.0177	-121.80273		No change	Reinstate		No change		CI (Table 1)	Continuous data QA/QC
			38.02162	-121.80638								
D22	●	Sacramento River @ Emmaton	38.08406	-121.73912	Reinstate (Ongoing)						EC (Table 2)	Water Quality Objective (no operational change)
			38.08453	-121.73914								
D24	●	Sacramento River below Rio Vista Bridge	38.15891	-121.68721		No change	Reinstate		No change		Flow (Table 3)	Continuous data QA/QC
			38.1555	-121.68113								
D29	▲	San Joaquin River @ Prisoners Point	38.05793	-121.55736	No change		Add	Add	Add		EC (Table 3)	Important mid-Delta flux station, northern endpoint for Stockton Ship Channel D.O. monitoring.
			38.05793	-121.55736								
S42	●	Suisun Slough 300' south of Volanti Slough	38.18053	-122.04696	No change		Reinstate	Reinstate	No change		EC (Table 3)	Ecologically important tidal marsh habitat station with long-term monitoring history.
			38.18027	-122.04779								

■ Compliance monitoring station

▲ Baseline monitoring station

● Compliance and baseline monitoring station

Table 2: Changes at "Baseline" Monitoring Stations

Station Number	Station Type	Station Description	Lat.	Long.	Cont. Recorder	Cont. Multiparameter	Discrete Physical/Chemical	Discrete Phytoplankton	Discrete Zooplankton	Discrete Benthos	Water Quality Objectives in 1995 B-D Plan	Rationale for Change and Implementation Status	Approved by SWRCB Exec. Dir.
C3A	▲	Sacramento River @ Hood	38.36772	-121.52051		No op. change, but new station number	Moved from C3 (C3 has been discontinued)	Moved from C3 (C3 has been discontinued)	Reinstate		None	Continuous & discrete monitoring station consolidation at continuous station location to improve monitoring efficiency & QA/QC - implementation complete; Reinstituted zooplankton monitoring at ecologically important northern rim flux station (imperts) - implementation in progress	Yes
D7	▲	Grizzly Bay @ Dolphin nr. Susan Slough	38.11708	-122.03972	Add		No change	No change	No change	No change	None	Ambient stations representing shallow water habitat in ecologically and operationally important locations along the estuarine transition zone. New continuous monitoring to better understand tidal constituent dynamics - implementation in progress	Yes
D9	▲	Honker Bay near Wheeler Point	38.07245	-121.93923	Add		Reinstate	Reinstate			None		Yes
D11	▲	Sherman Lake near Antioch	38.04228	-121.79951	Add		Reinstate	Add			None		Yes
D19	▲	Franks Tract near Russo's Landing	38.04376	-121.61477	Add		Reinstate	Reinstate	Reinstate		None		Yes
D41A	▲	San Pablo Bay near Mouth of Petaluma River	38.08472	-122.39067			Add	Add	Add	No change	None	Ecologically important ambient station representing shoal habitat with fluctuating salinity levels. Long-term benthos station. - implementation complete	Yes
NZ080	▲	San Joaquin River, 549 meters upstream of light 26							Remove		None	Station discontinued since 1996, not mandated in D-1641	No

■ Compliance monitoring station    ▲ Baseline monitoring station    ● Compliance and baseline monitoring station

Table 3: Modified Station numbers and descriptions at "Baseline" Monitoring Stations

Station Number	Station Type	Station Description	Lat.	Long.	Cont. Recorder	Cont. Multiparameter	Discrete Physical/Chemical	Discr. Phytoplankton	Discr. Zooplankton	Discrete Benthos	Water Quality Objectives in 1995 B-D Plan	Rationale for Change
C3	▲	Sacramento River @ Greens Landing	38.36772	-121.52051			Move from C3	Moved from C3 (C3 has been discontinued)			None	Station consolidation at C3A reviewed & approved by the SWRCB Exec. Director in 2003. Implemented.
C3A		Sacramento River @ Hood	38.36772	-121.52051		No op. change, but new station number	Move to	Moved to	Reinstate			No operational change at continuous multiparameter station. New station number and description to indicate that the (shore-based) continuous monitoring is taking place in a different location than the (mid-channel) discrete monitoring activities. These changes were approved by the SWRCB Exec. Director in 2003.
D6	▲	Suisun Bay @ Bull's Head Pt. near Martinez	38.04427	-122.11764			No change	No change	No change	No change	None	
D6A		Suisun Bay @ Martinez	38.02762	-122.14052		No op. change, but new station number						
D28A	▲	Old River near Rancho Del Rio	37.97038	-121.57271			No change	No change	No change	No change	None	
D28B		Old River @ Bacon Island	37.9698	-121.5721		No op. change, but new station number						
P8	▲	San Joaquin River @ Buckley Cove	37.97815	-121.38242			No change	No change	No change	No change	None	
P8A		San Joaquin River @ Rough and Ready Island	37.96277	-121.36587		No op. change, but new station number						

■ Compliance monitoring station    ▲ Baseline monitoring station    ● Compliance and baseline monitoring station