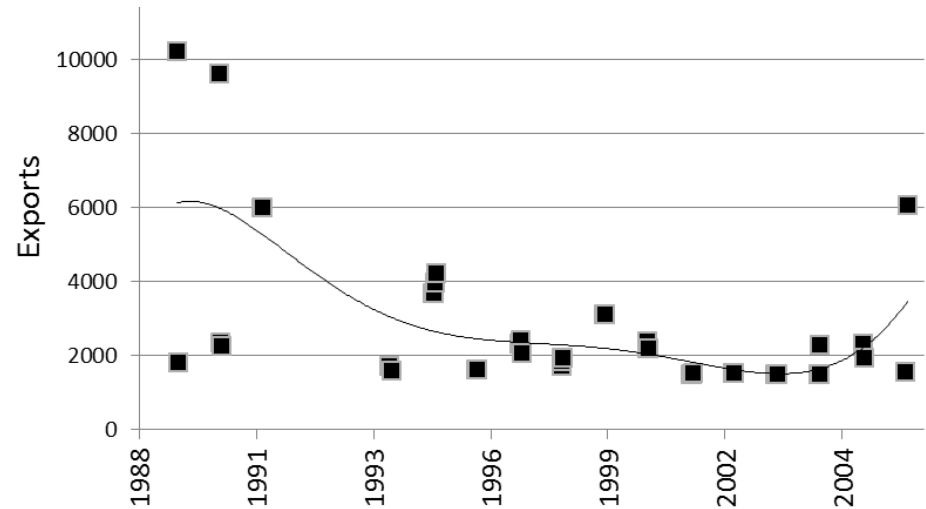
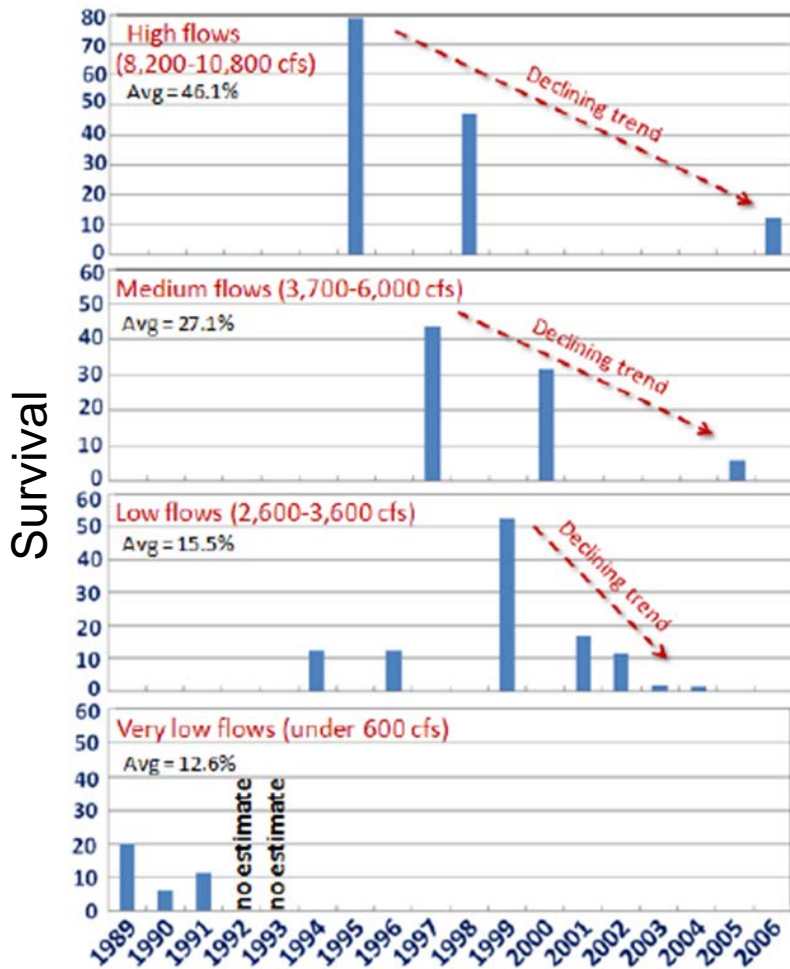


Bradley Cavallo



Delta Juvenile Salmon Survival

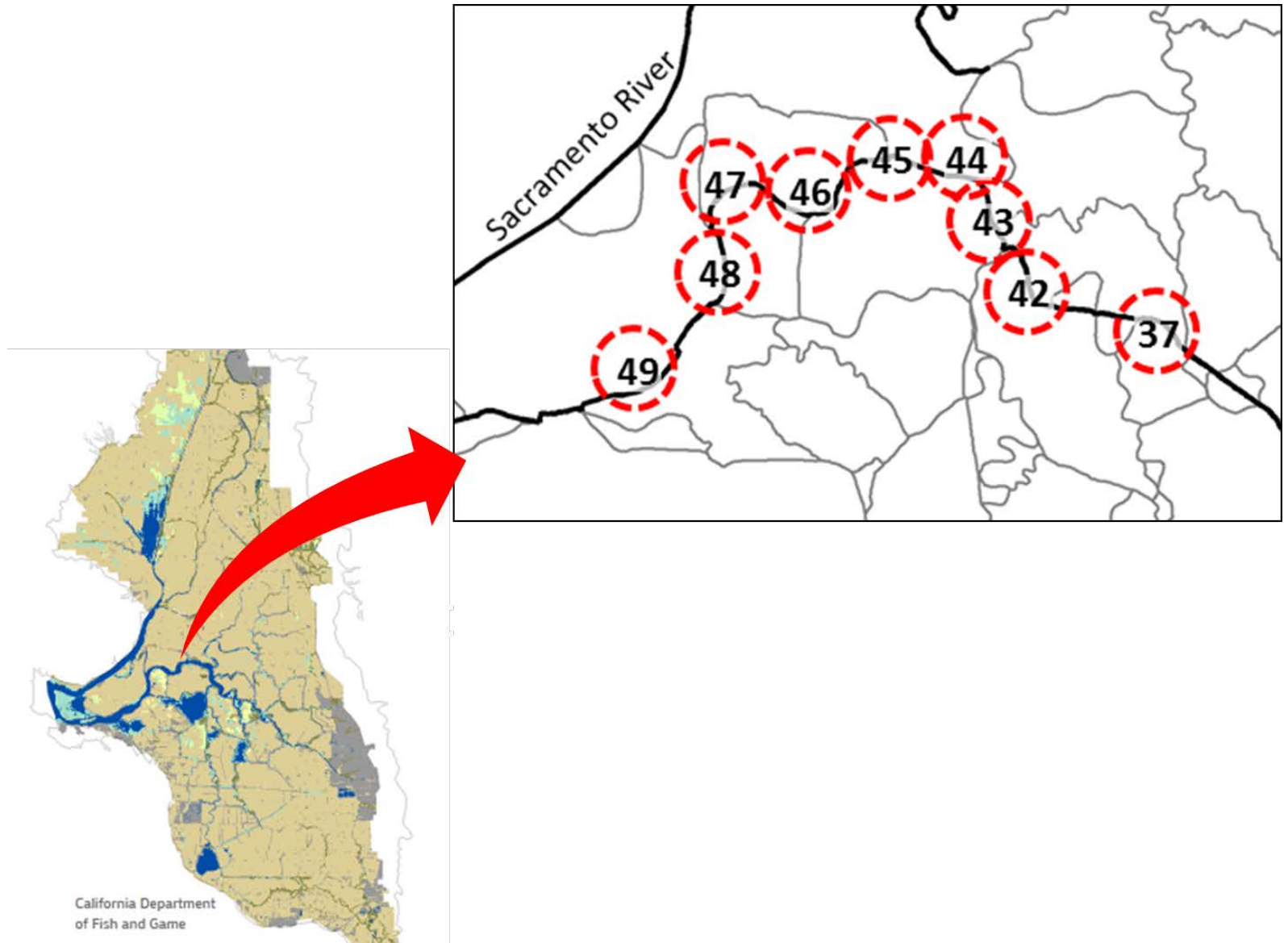
VAMP Studies 1985-2006

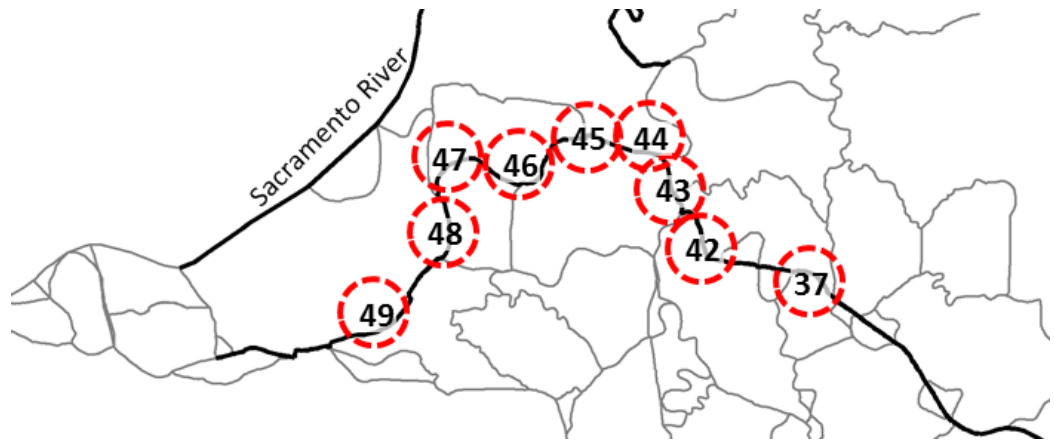


Data Source: Neman (2008), Table 5

Source: 2010 Science Panel VAMP Review

Delta Hydrodynamics





Delta Inflows:

Sacramento River: 18,264 cfs

San Joaquin River: 2,736 cfs

Exports

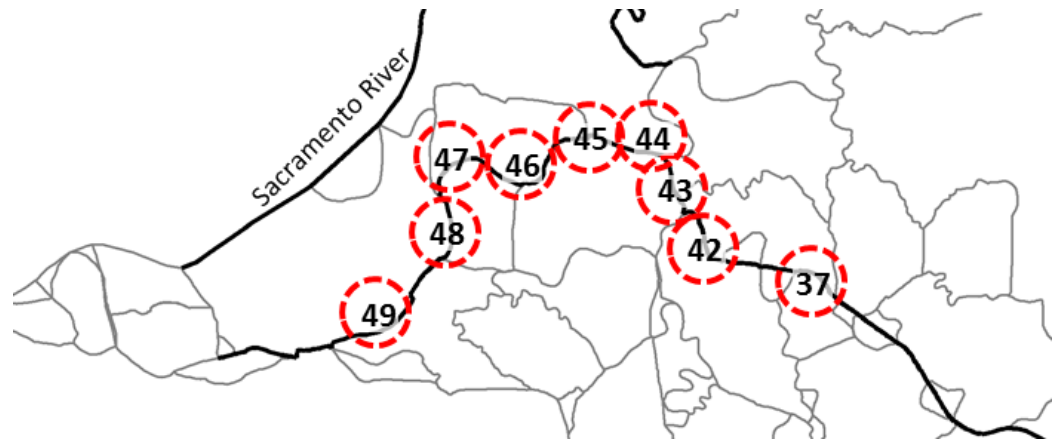
— 2000

— 6000

— 10000

DSM2 Channels		
37	42	43
44	45	46
47	48	49

Average Daily Flow ("net" flow)



Delta Inflows:

Sacramento River: 18,264 cfs

San Joaquin River: 2,736 cfs

Exports

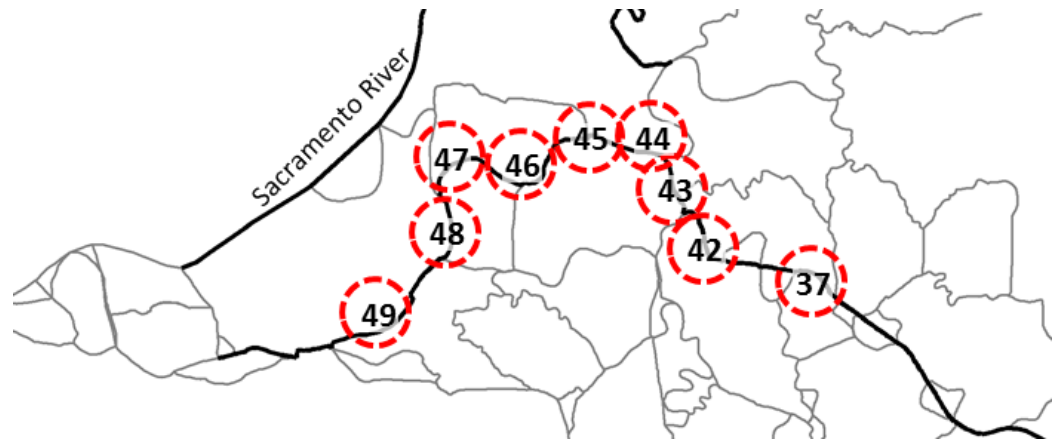
— 2000

— 6000

— 10000

DSM2 Channels		
37	42	43
812 cfs	-388 cfs	-4,083 cfs
80 cfs	-1,982 cfs	-6,606 cfs
-596 cfs	-3,559 cfs	-9,187 cfs
44	45	46
-4,241 cfs	-1,444 cfs	-1,580 cfs
-7,006 cfs	-4,254 cfs	-4,383 cfs
-9,818 cfs	-7,102 cfs	-7,223 cfs
47	48	49
-2,072 cfs	-221 cfs	2,349 cfs
-4,753 cfs	-2,263 cfs	-742 cfs
-7,473 cfs	-4,337 cfs	-3,861 cfs

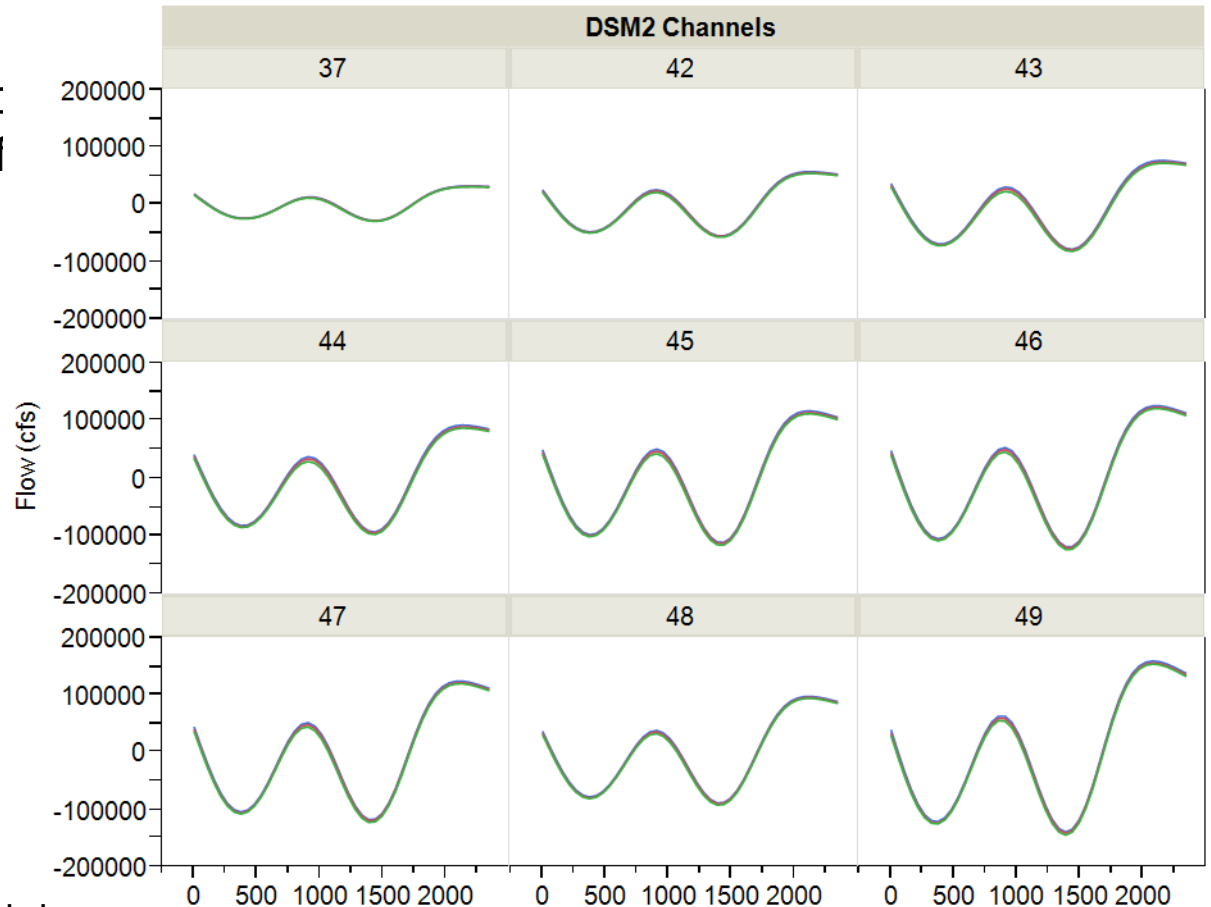
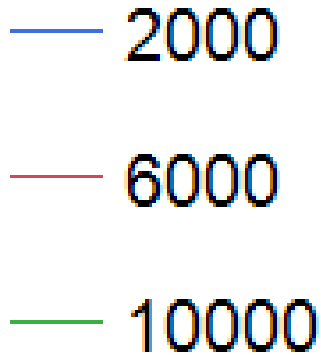
Sub-daily flows (15-min intervals)



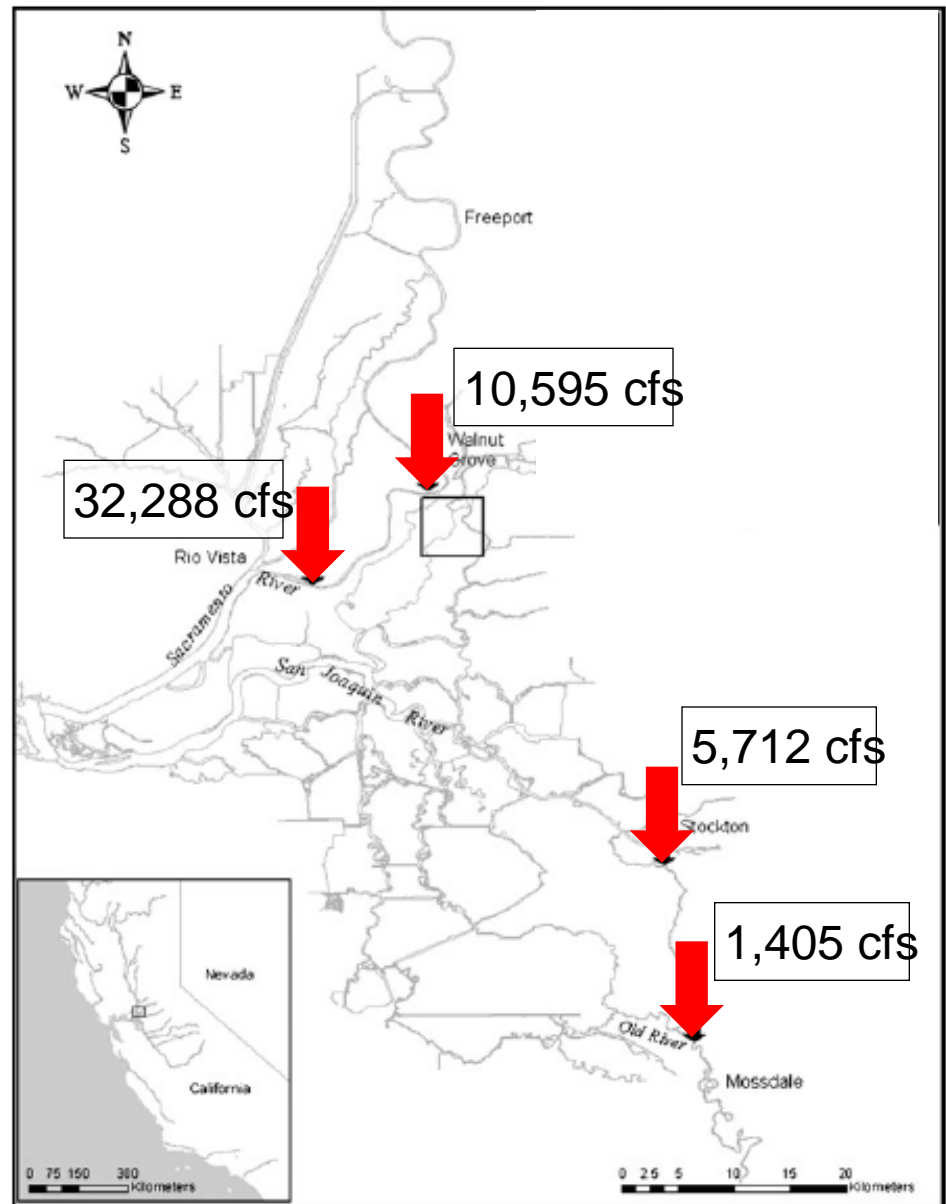
Delta Inflows:

Sacramento River: 18,264 cfs
San Joaquin River: 2,736 cfs

Exports



How does river inflow influence location of the tidal-transition zone?



Source: modified from Cavallo, Merz and Setka (2012)