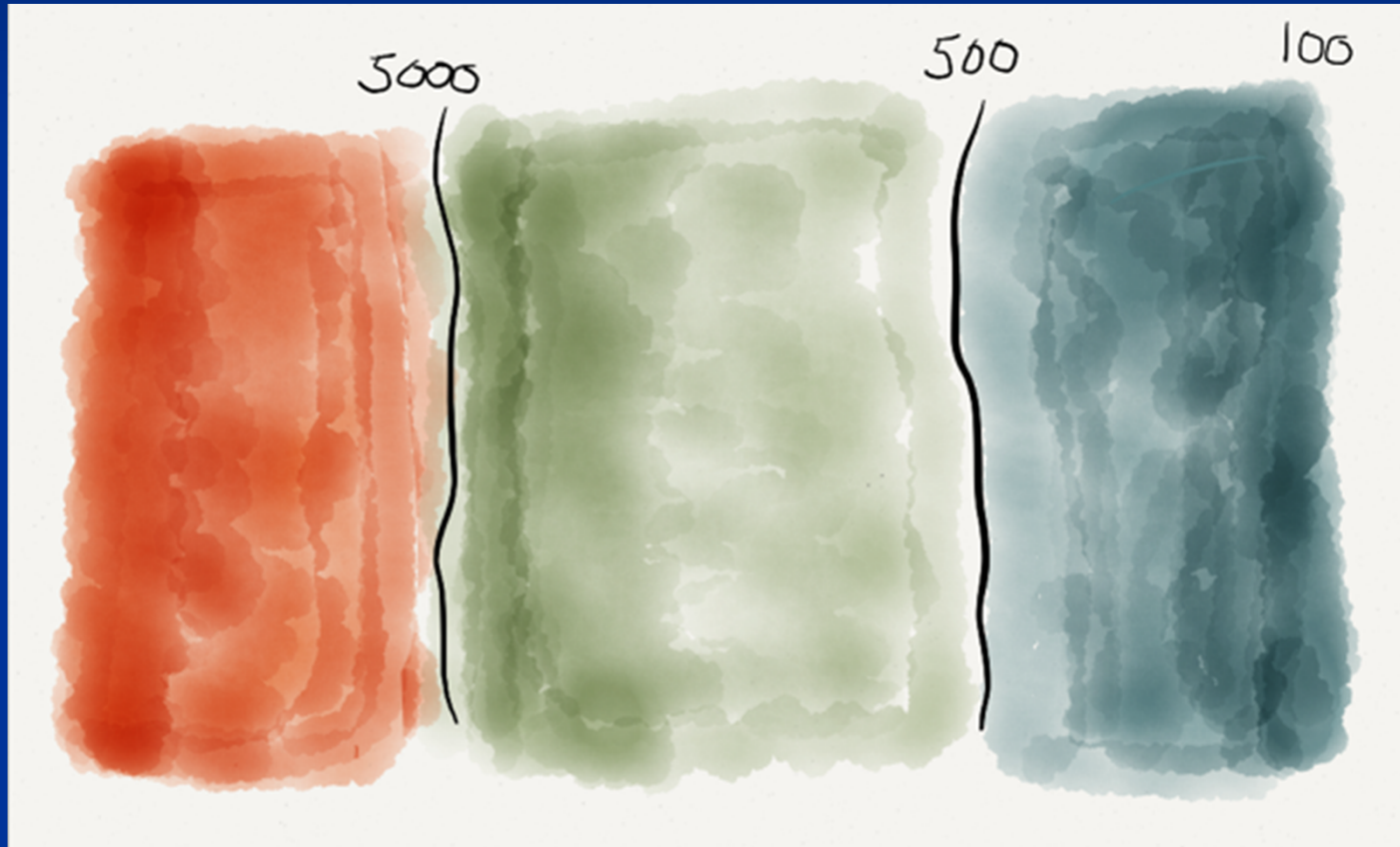


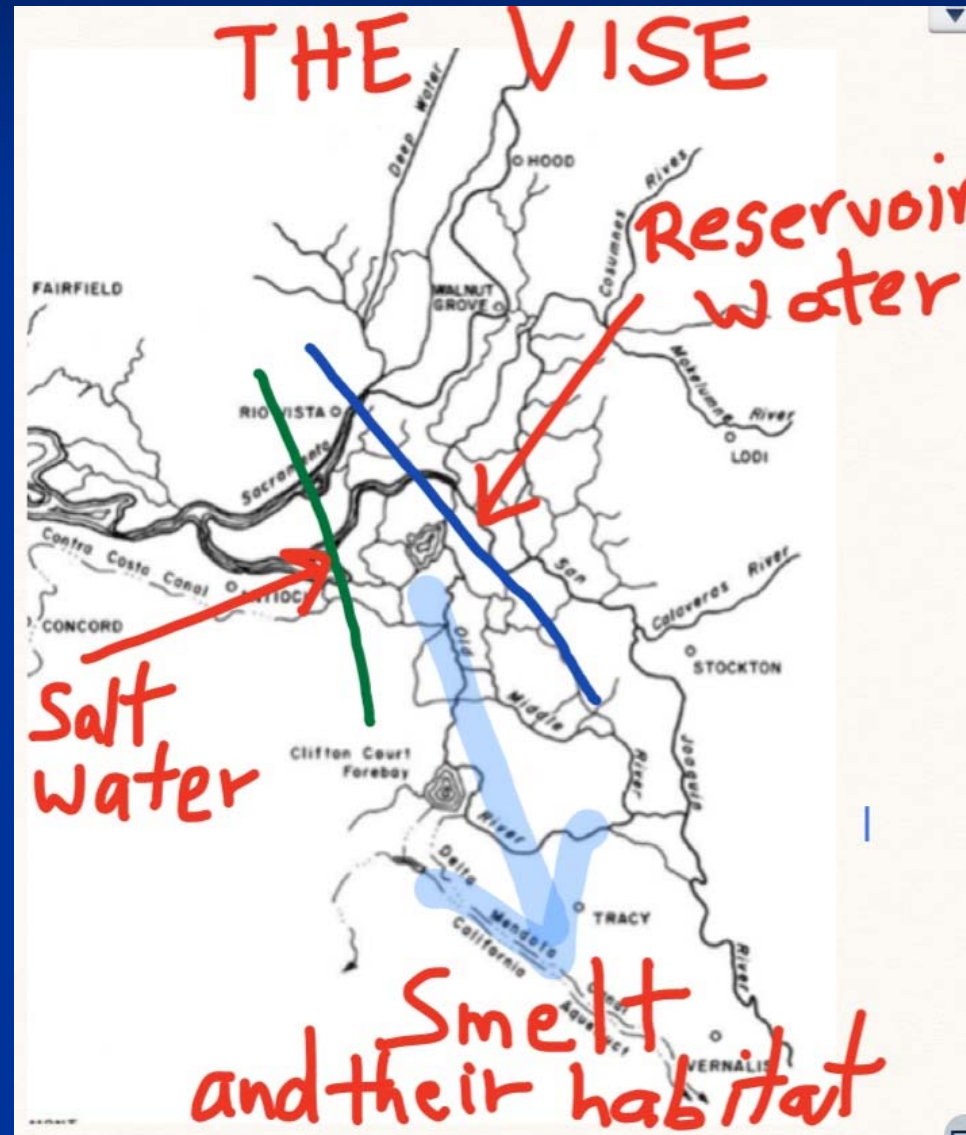
Flow Standards and LSZ



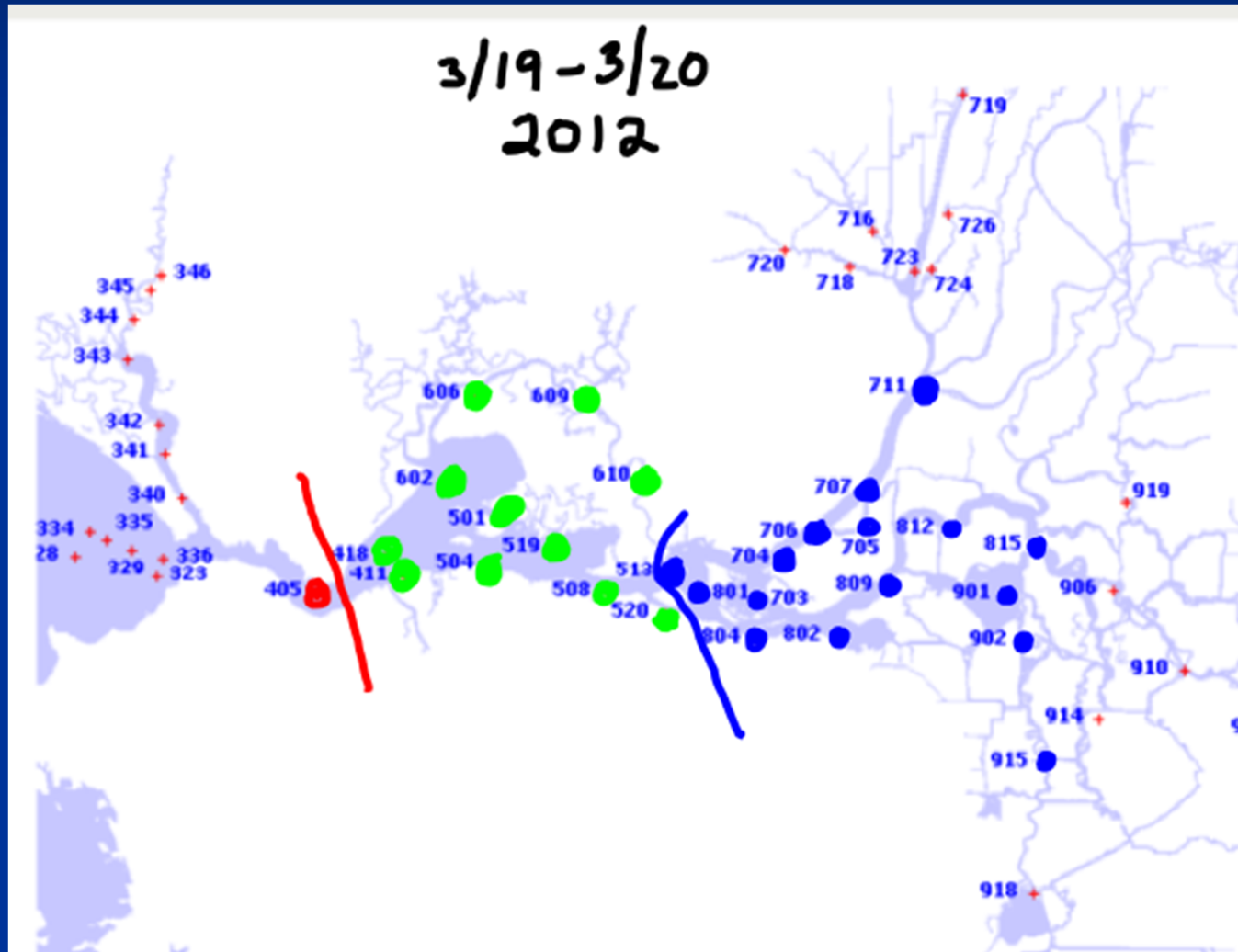
Why is LSZ Important?

- ⑩ Collects nutrients, sediment, and plankton
- ⑩ Mixing and hydrodynamics
- ⑩ Long Residence – blooms, productivity
- ⑩ Saves organisms energy - same salinity as blood
- ⑩ Salmon smolt transition
- ⑩ Shallow, turbid, and cooler
- ⑩ All necessary ingredients for POD species

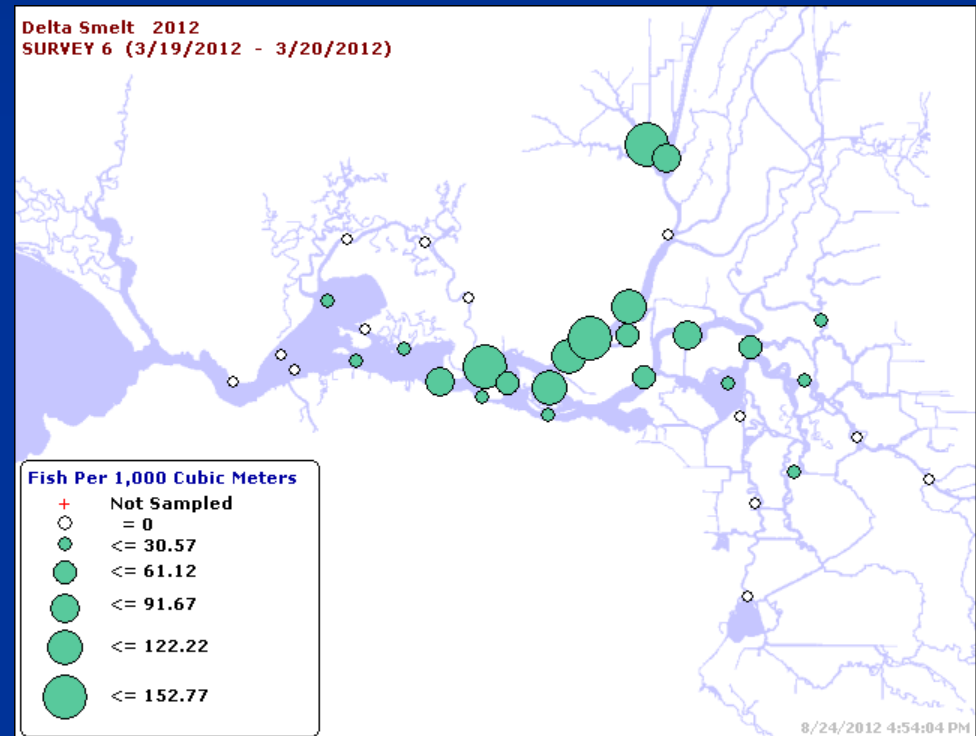
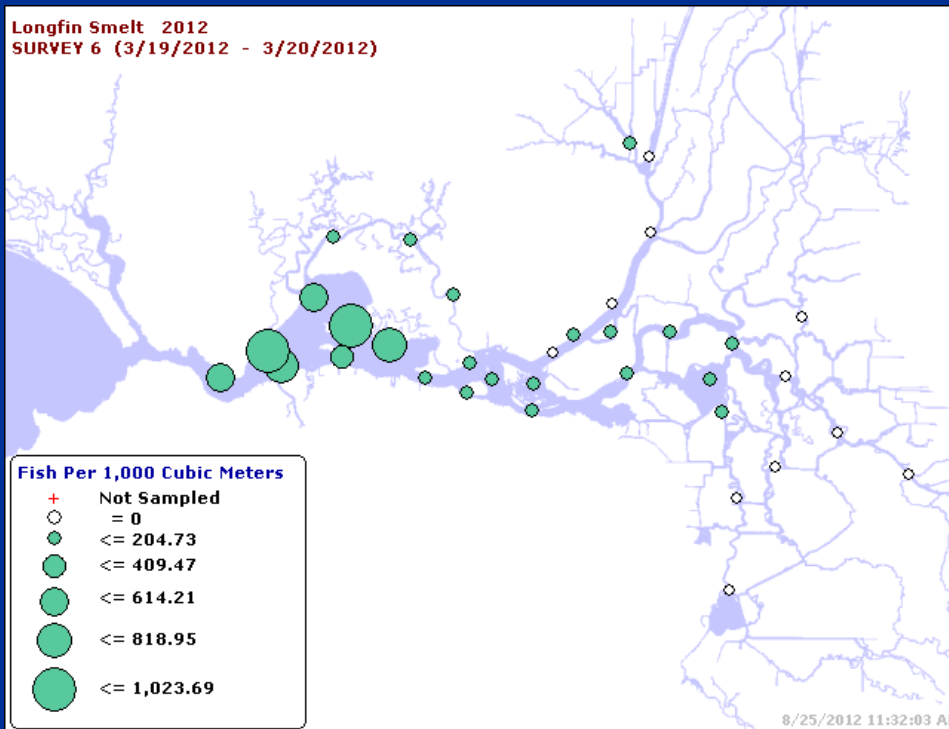
THE VISE



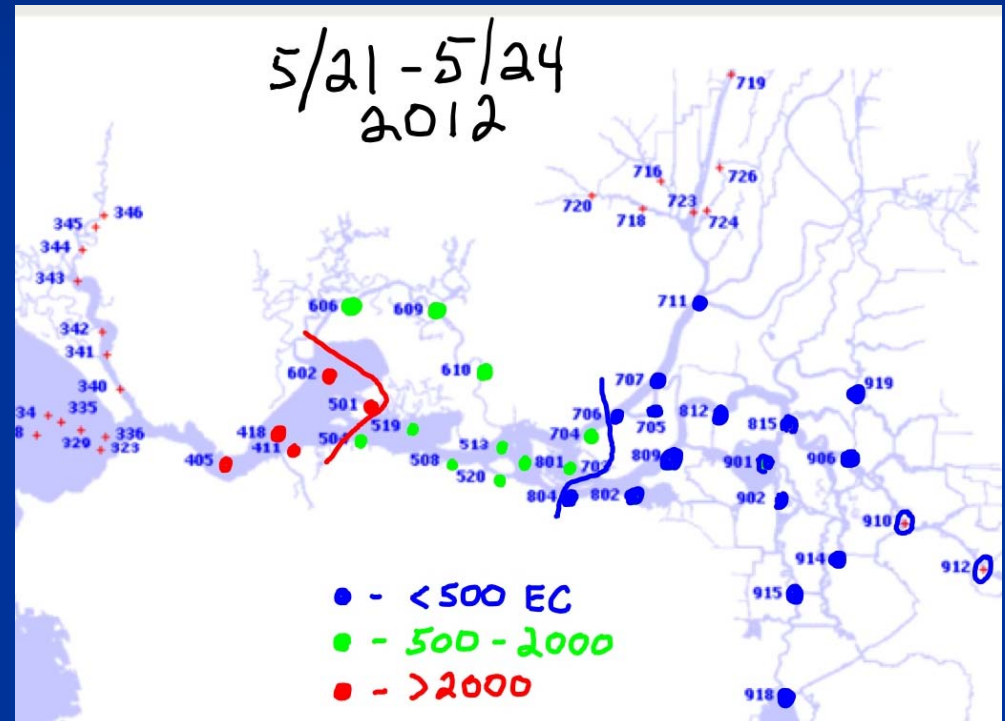
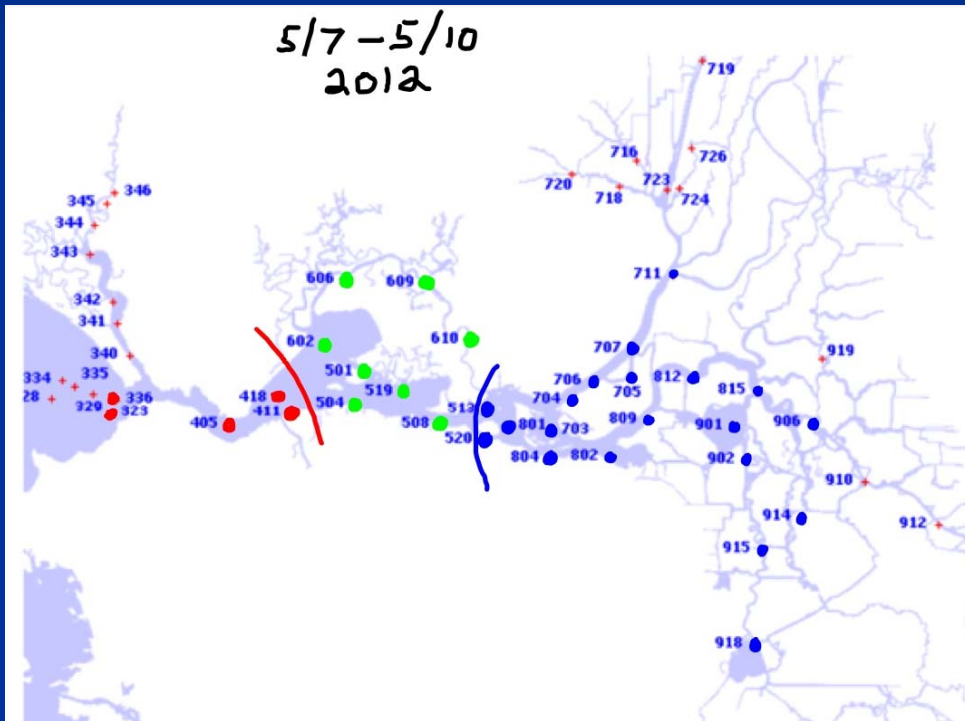
Low Salinity Zone March 2012



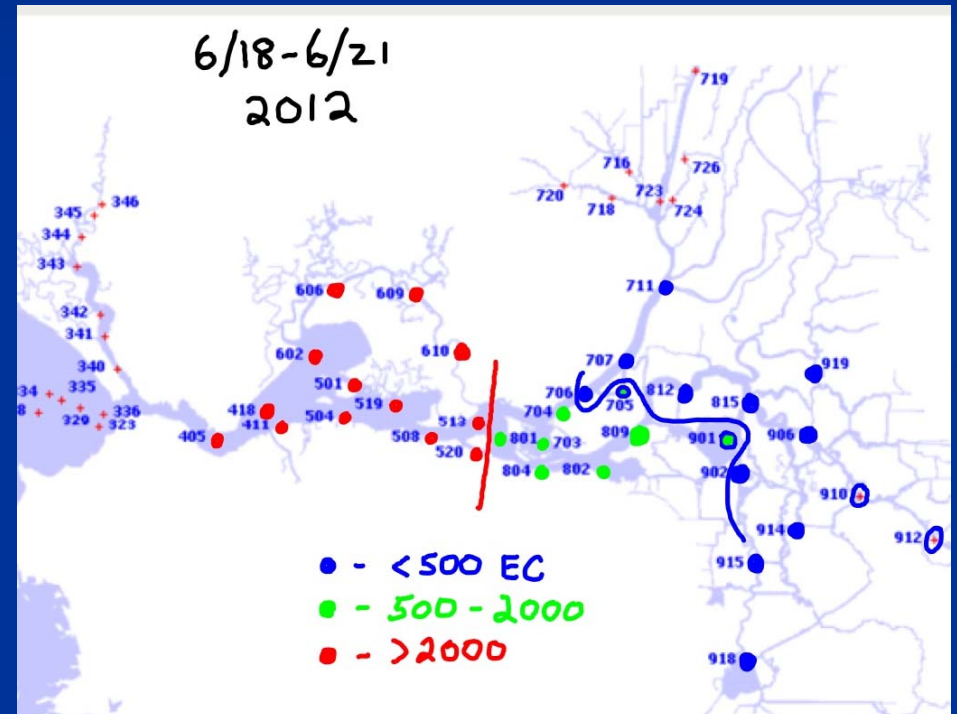
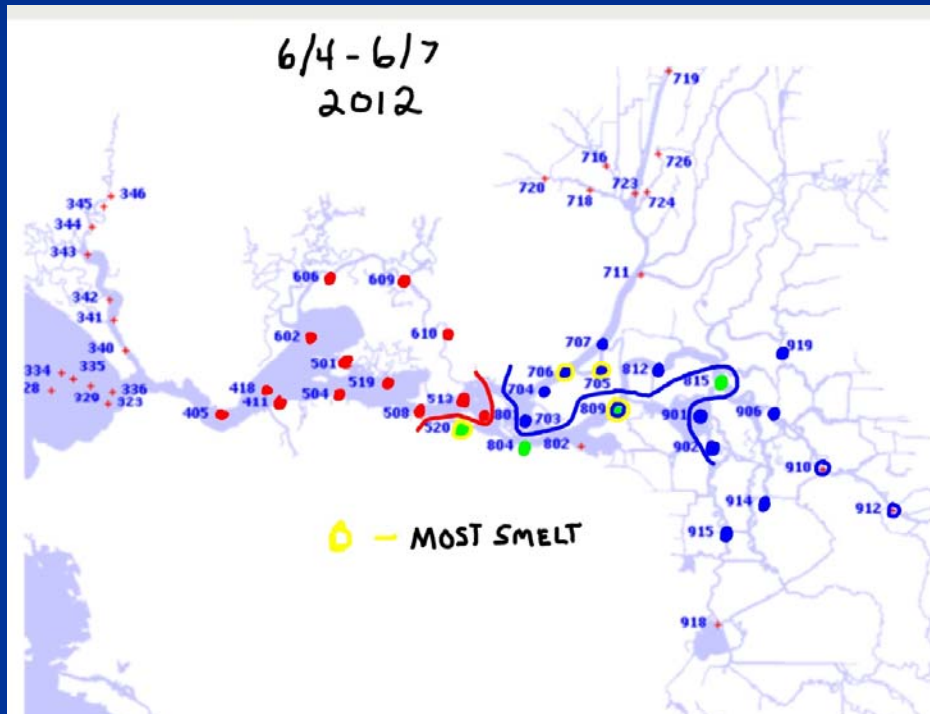
SMELT MARCH 2012



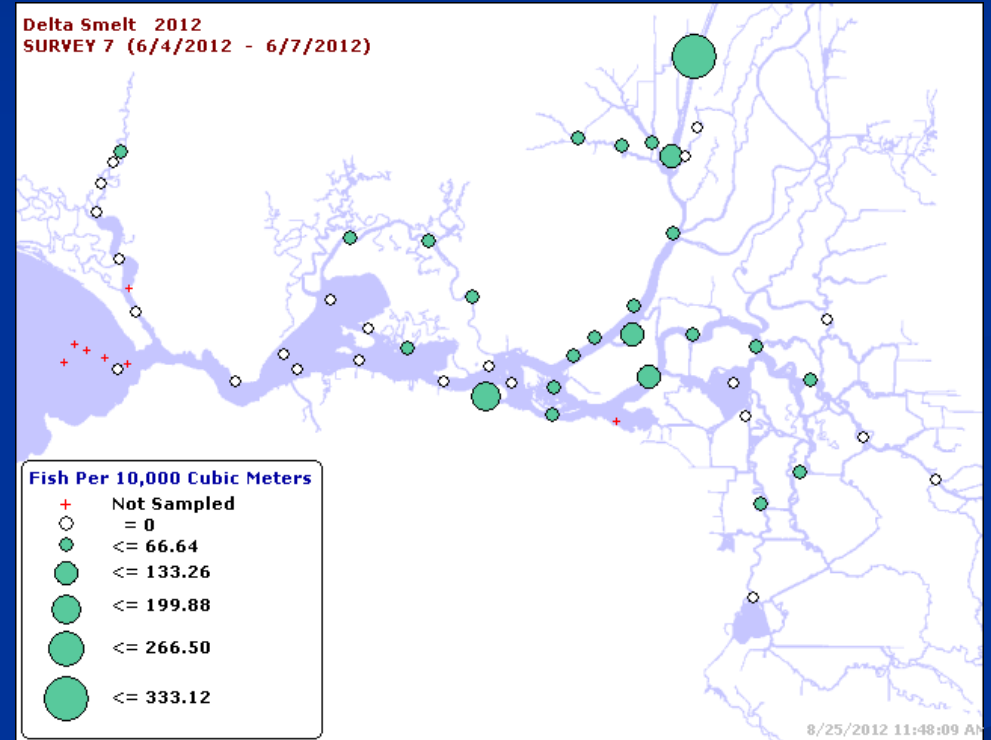
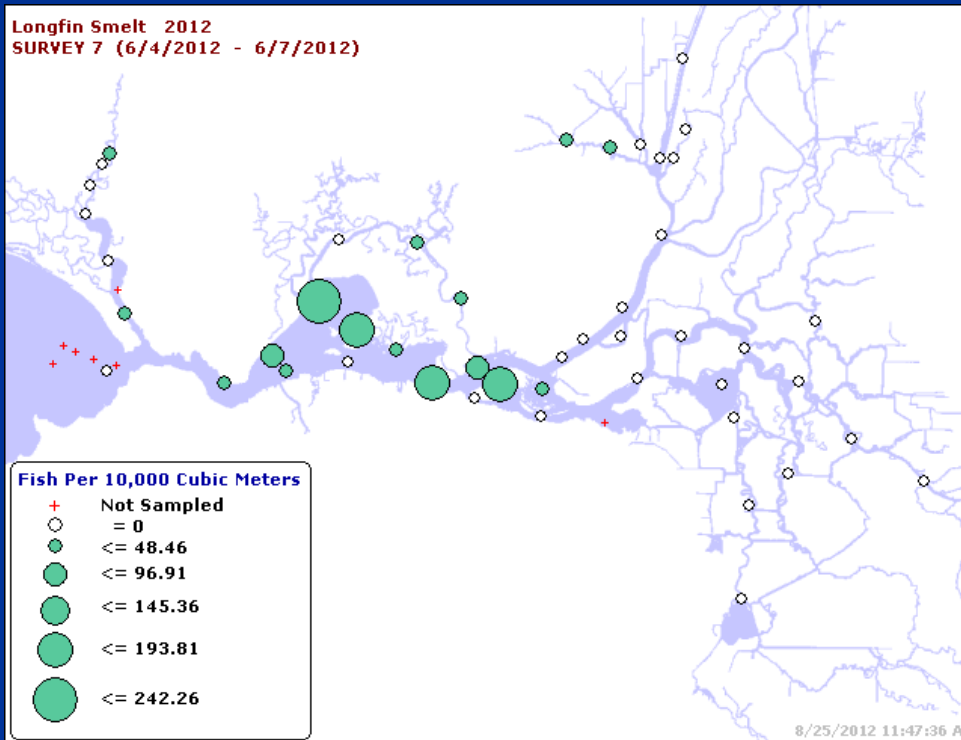
May 2012



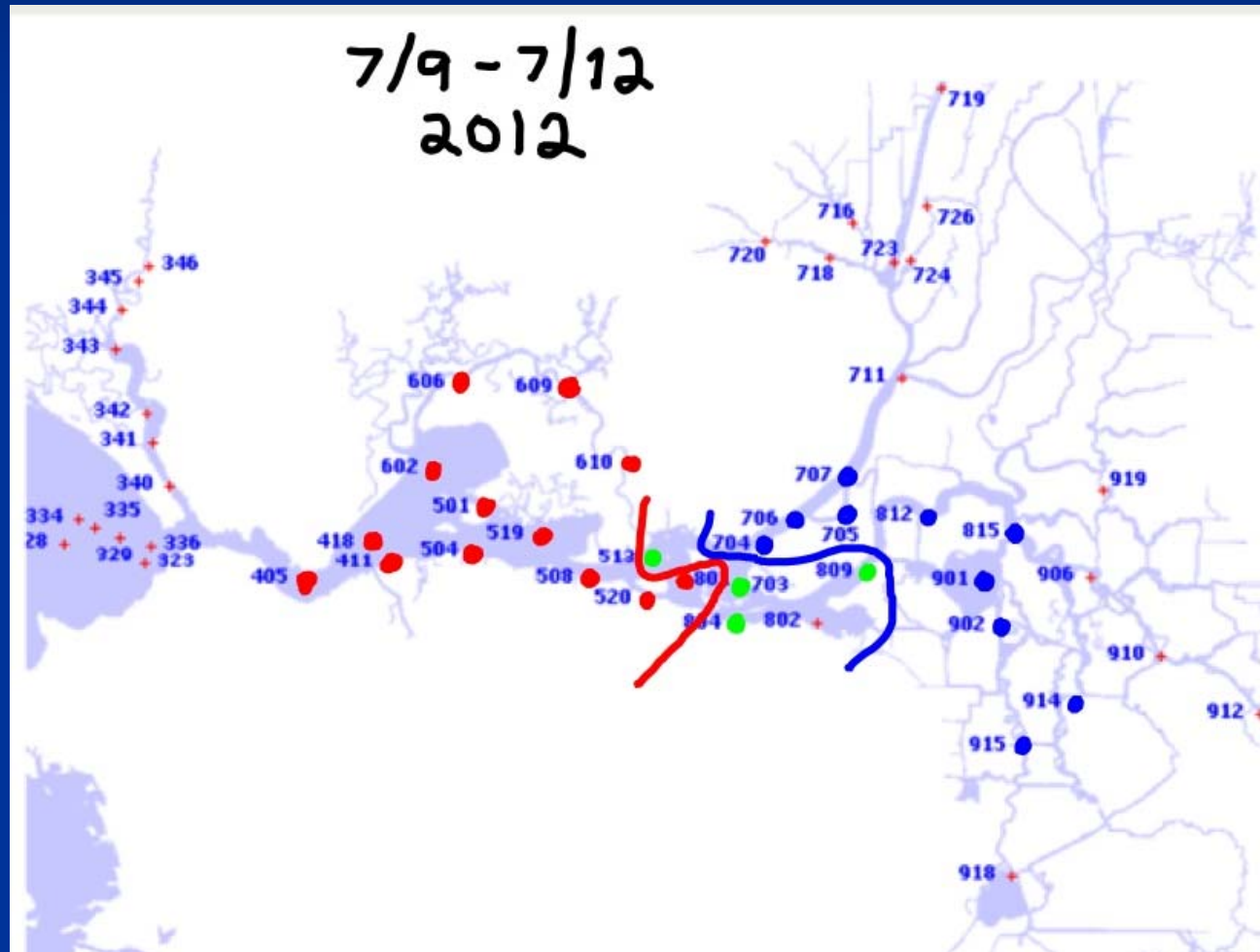
June 2012



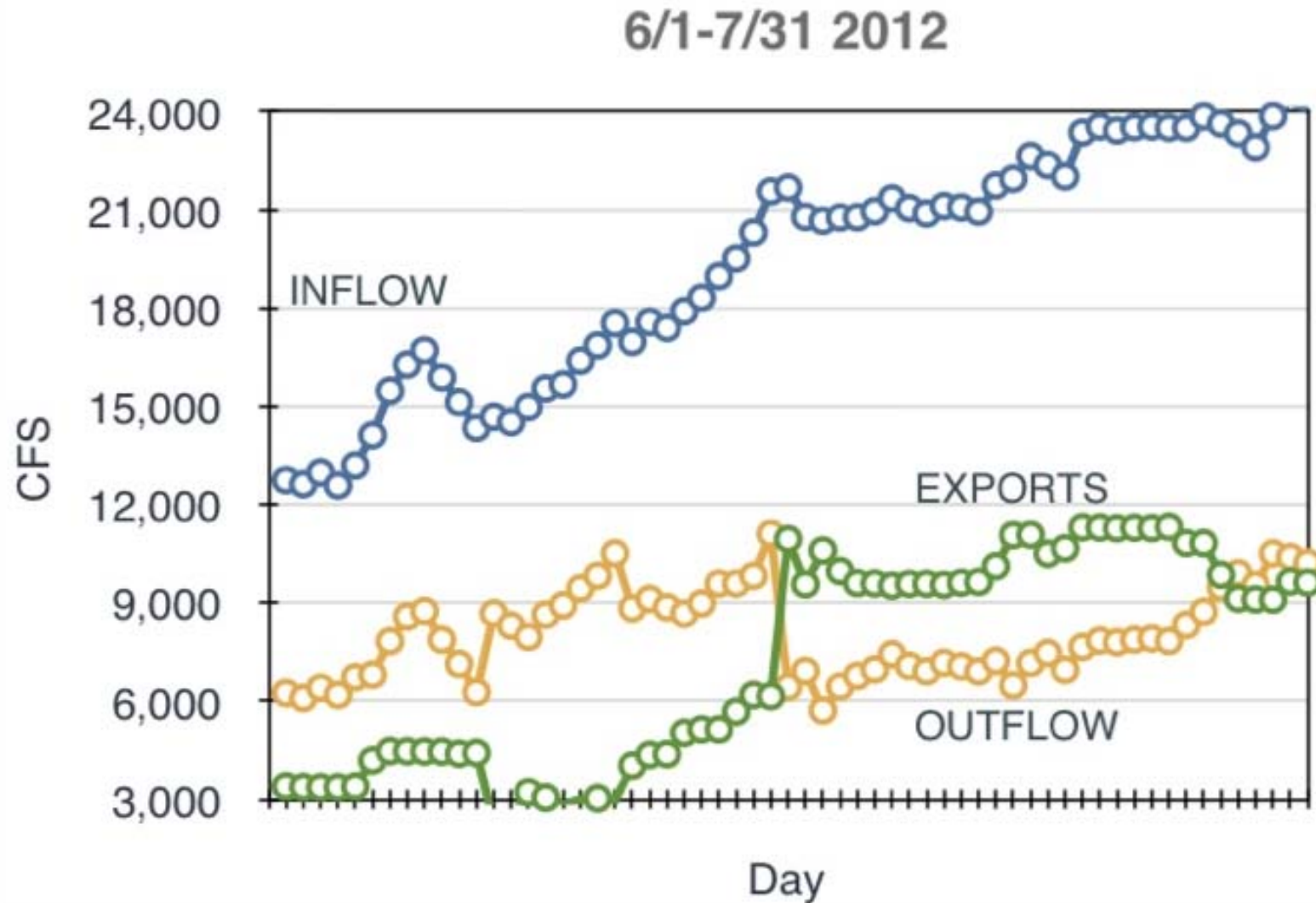
Smelt June 2012



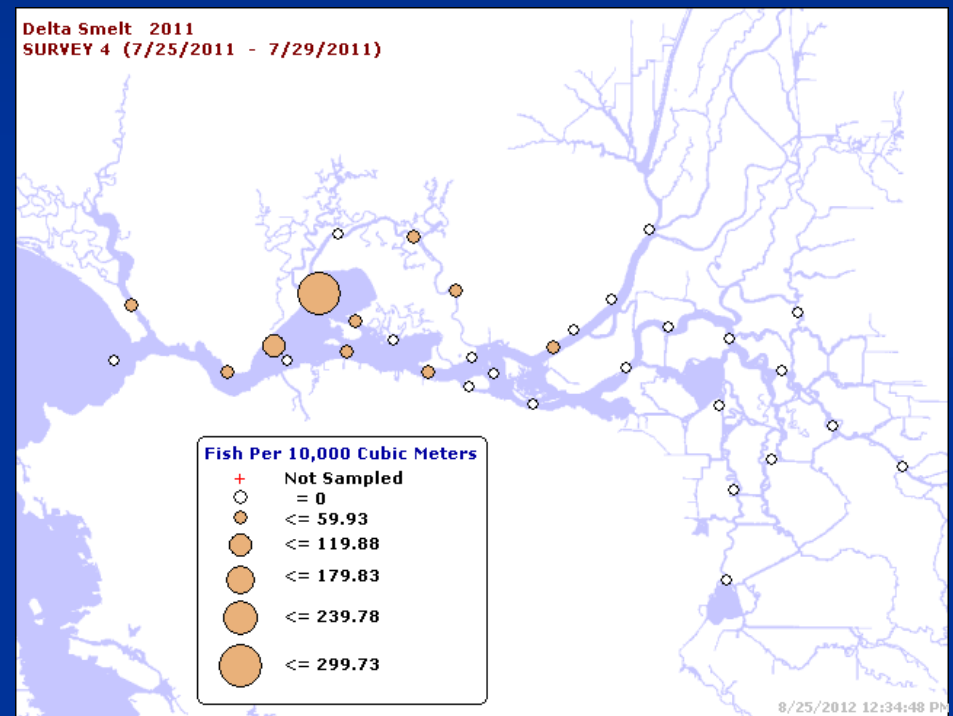
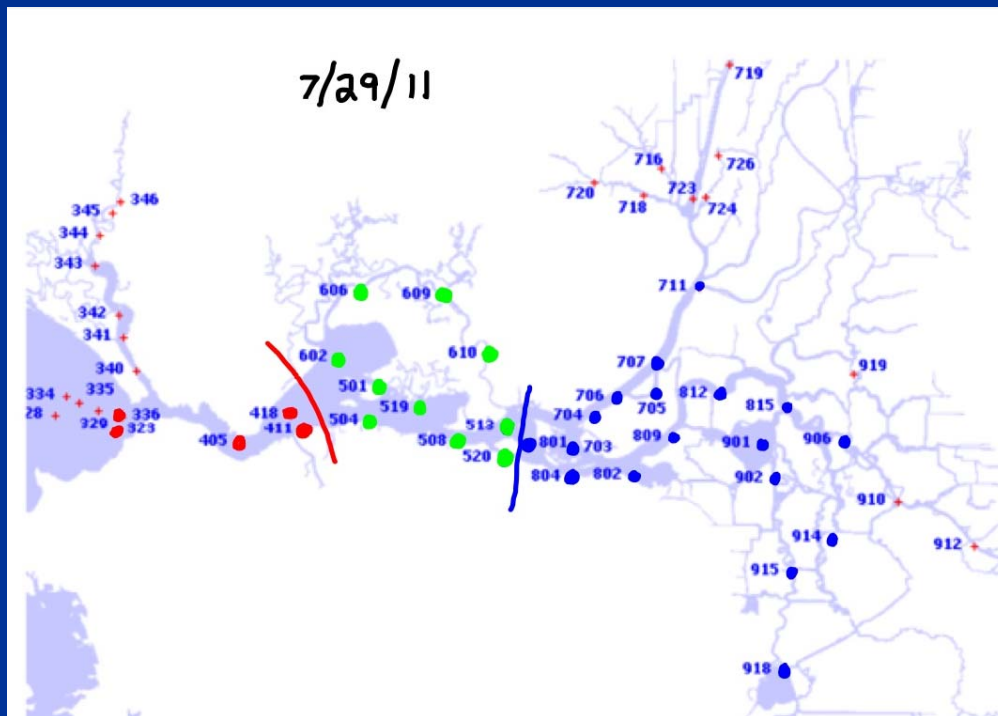
July 2012



2012

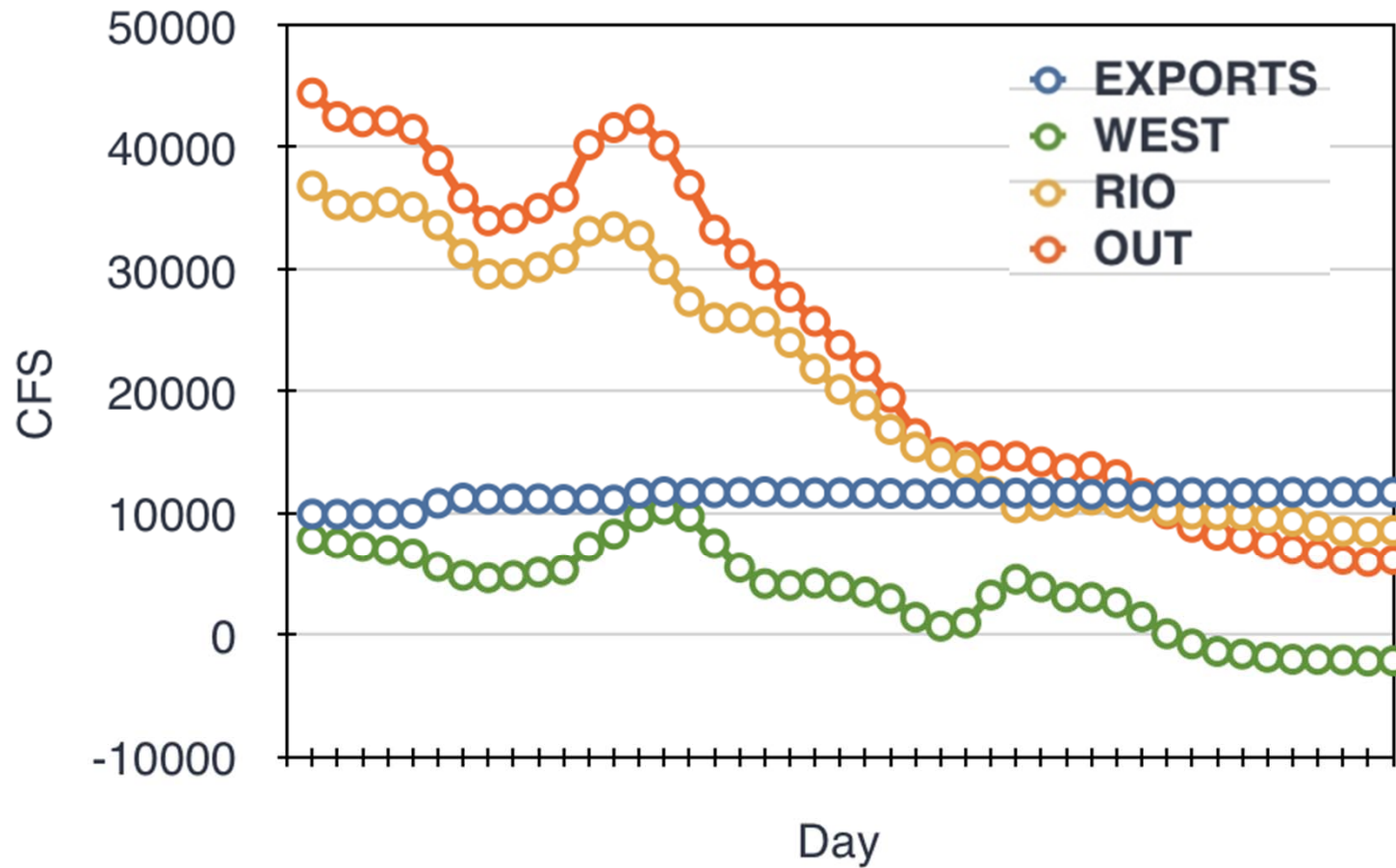


July 2011



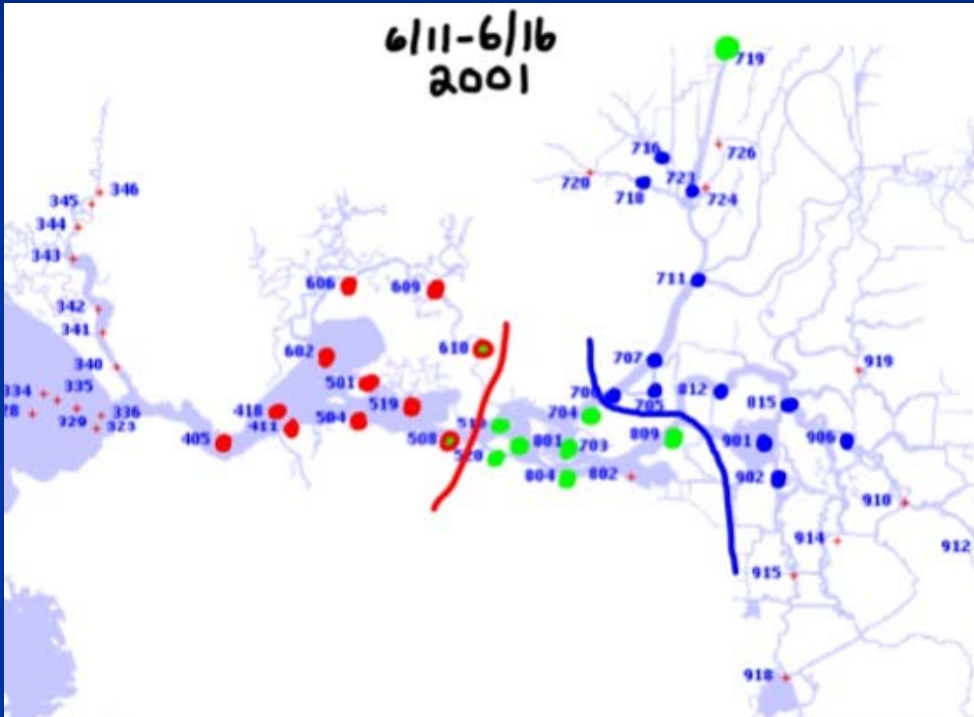
2011

6/18-7/31 2011

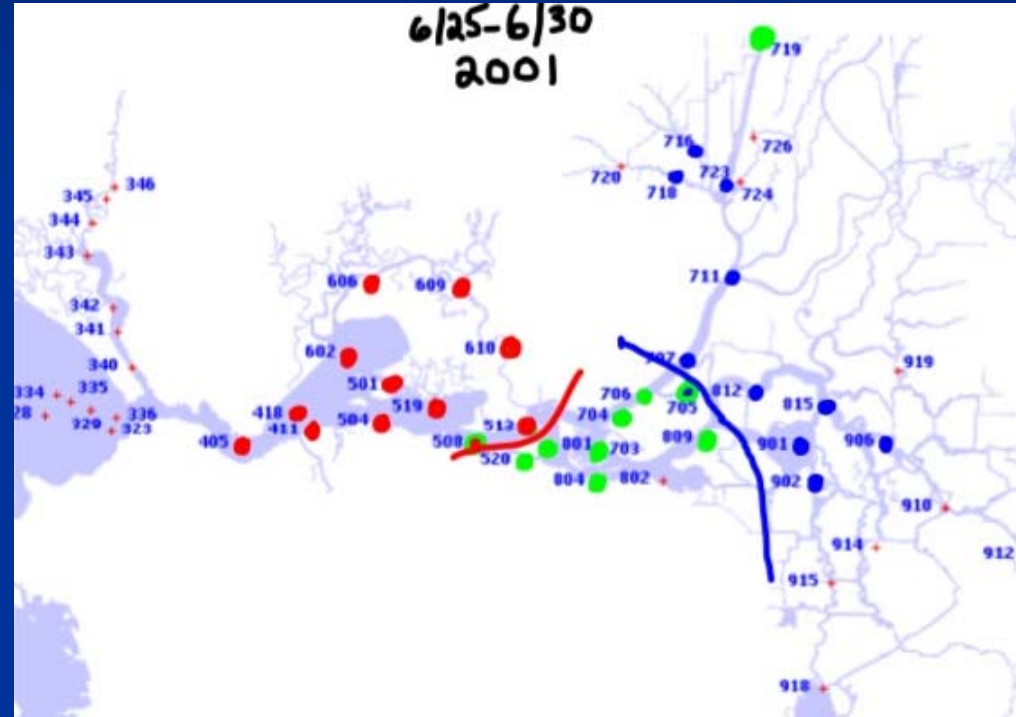


2001

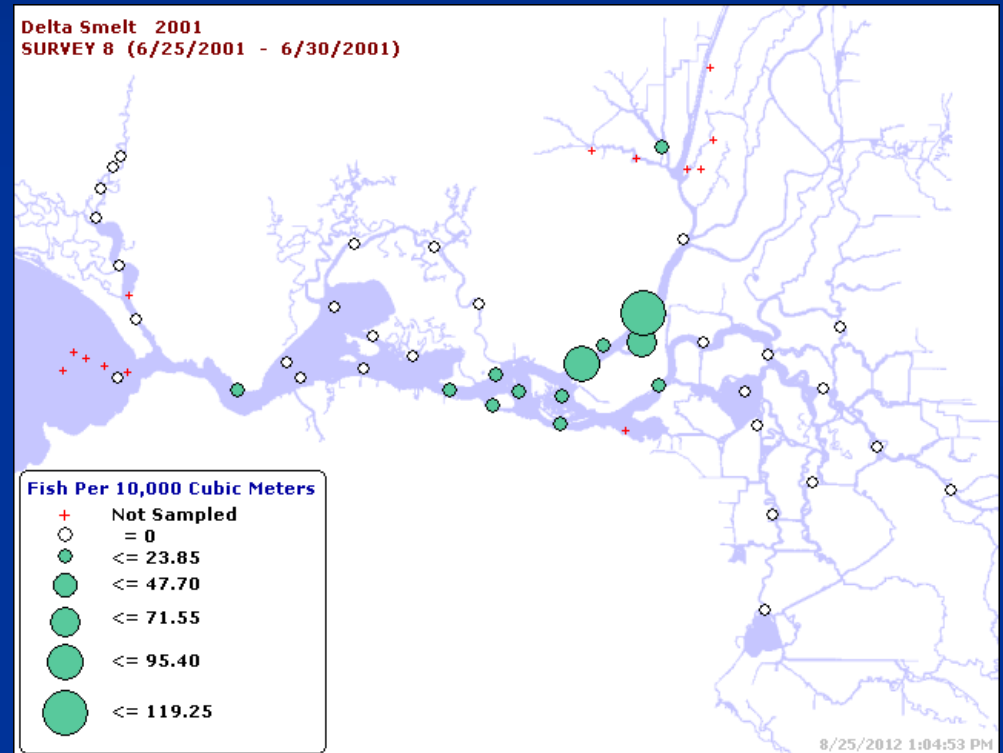
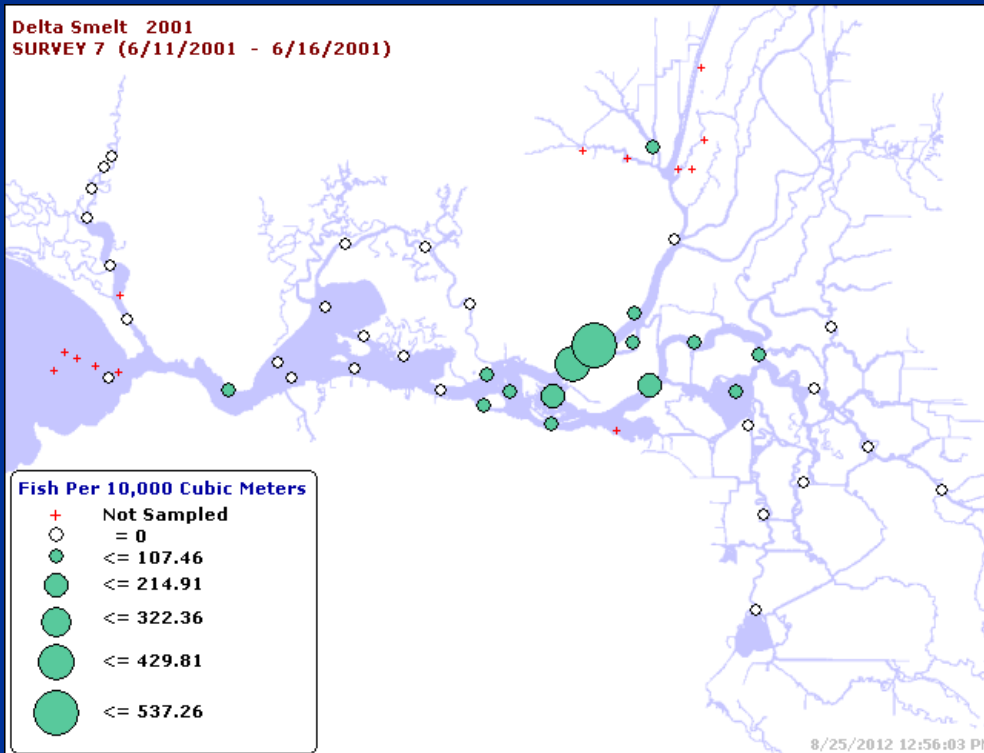
6/11-6/16
2001



6/25-6/30
2001

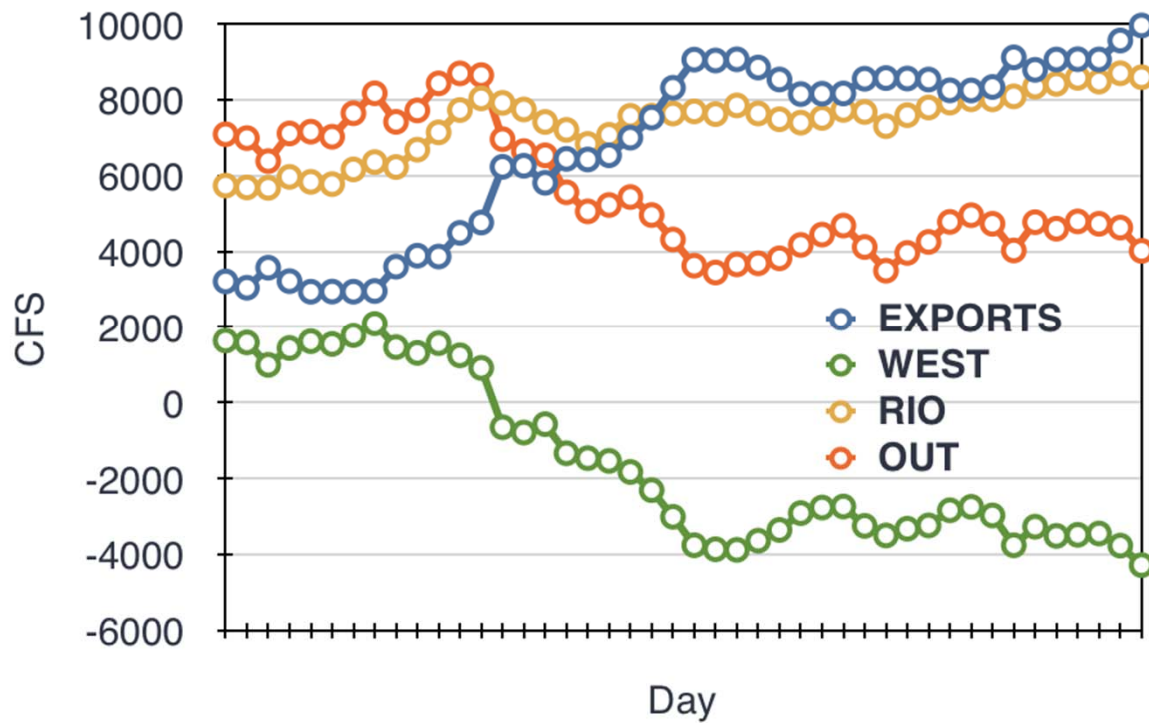


Smelt 2001

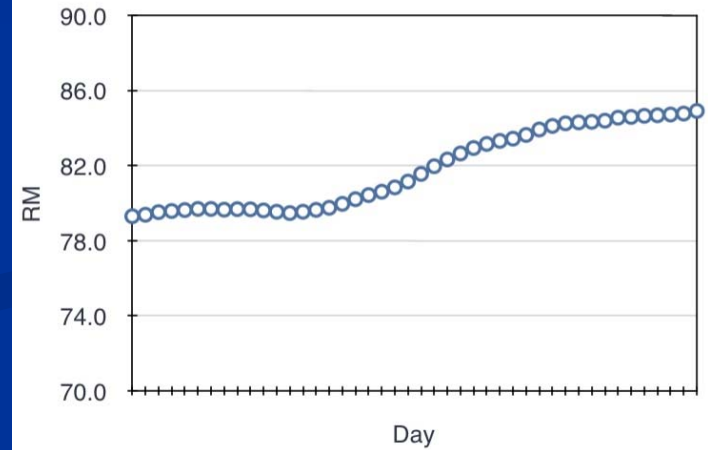


2001

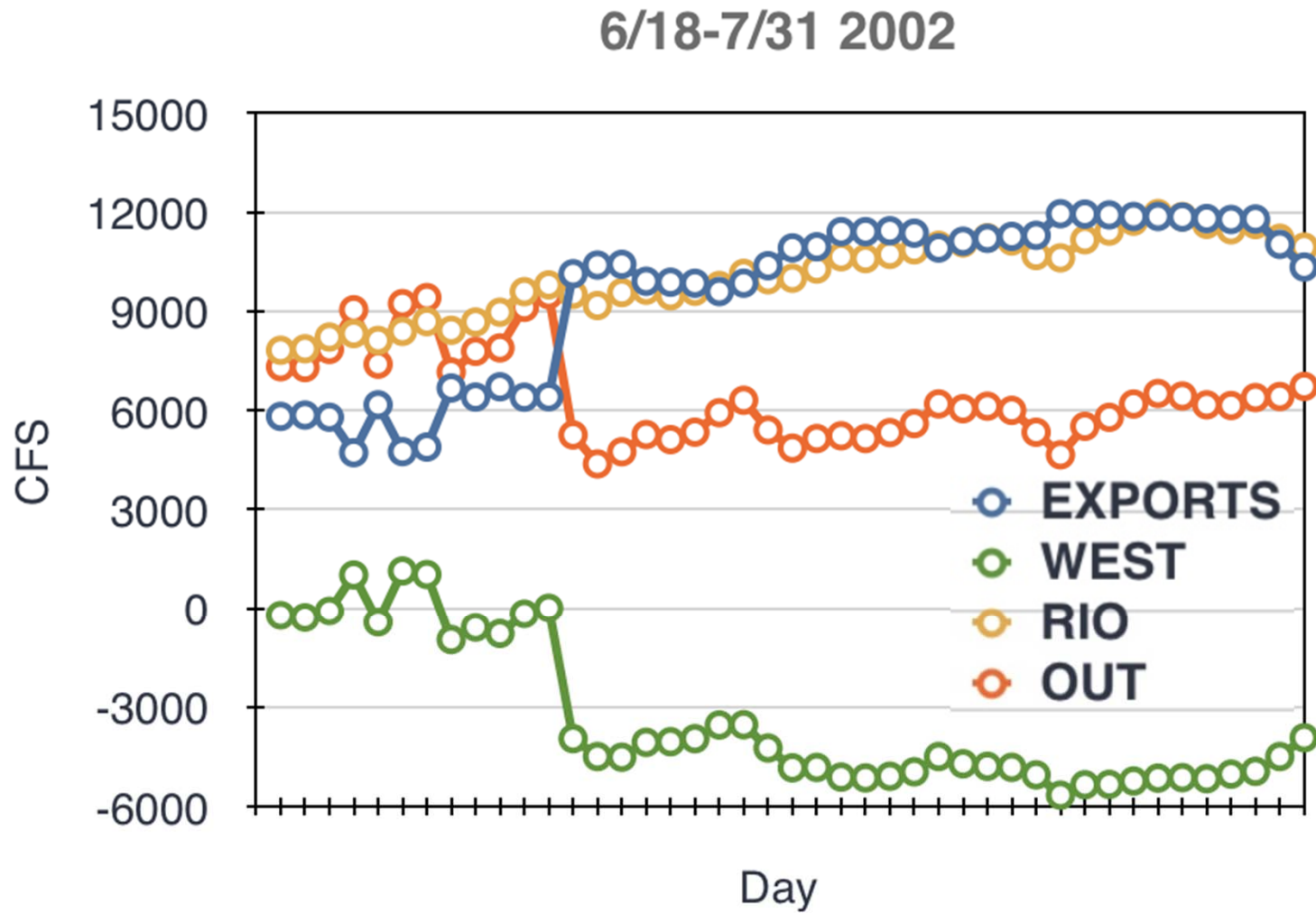
6/18-7/31 2001



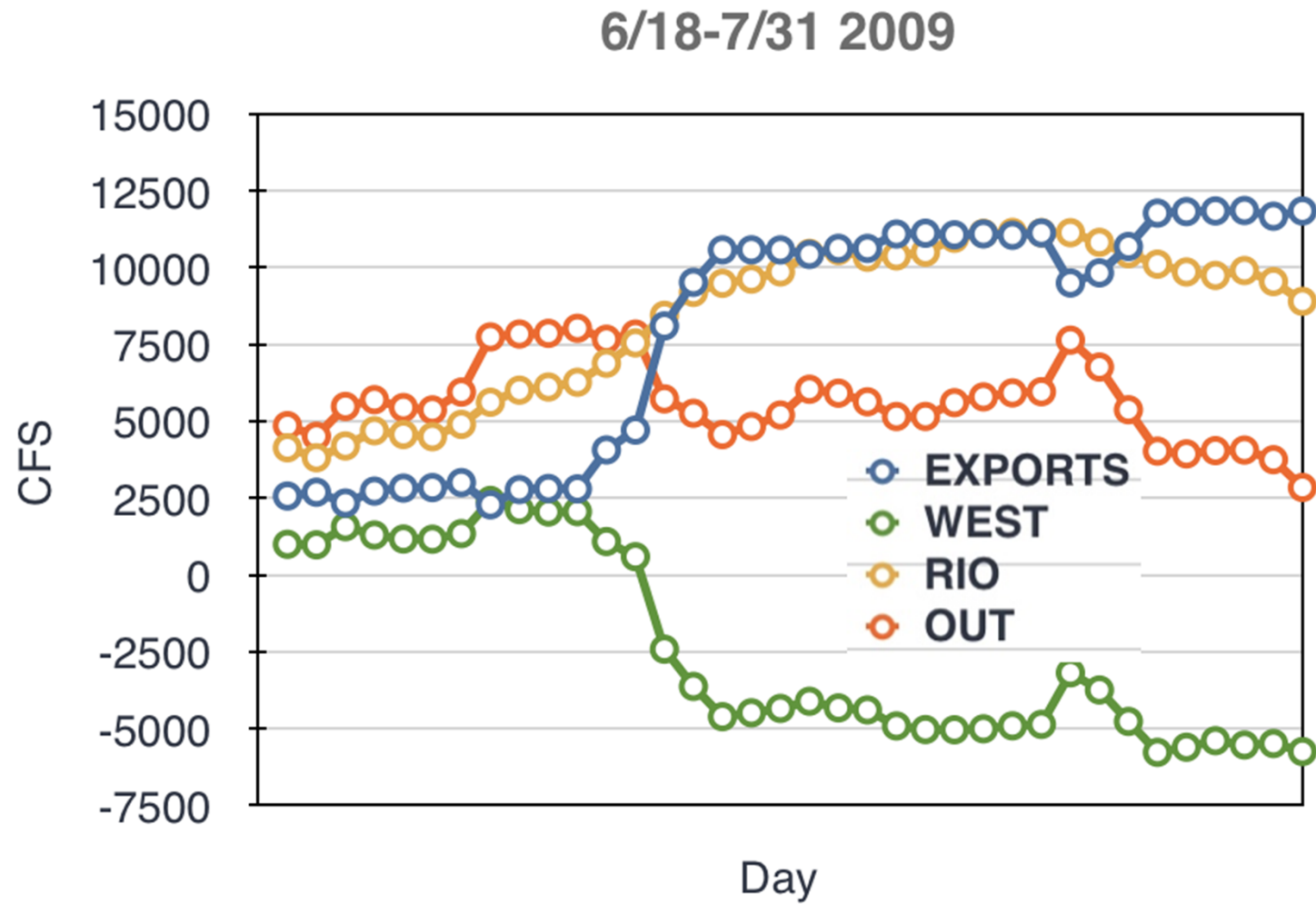
X2



2002



2009



Recommended Flow Standards

- ⑩ Delta Outflow or X2 Location
- ⑩ Export Limits
- ⑩ WEST or OMR Flow
- ⑩ May, June, July - YES
- ⑩ August - September - October ?