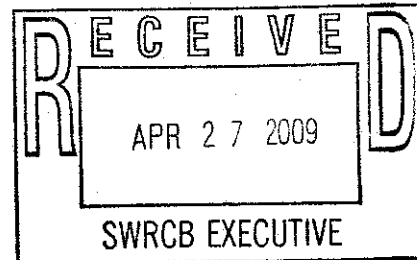




## THE CALIFORNIA MERMAID ® & THE MERMAID FESTIVAL

April 23, 2009

Jeannie Townsend  
Clerk to the Board  
State Water Resources Control Board  
1001 I Street  
Sacramento, CA 95814



Randy Poole  
General Manager / Chief Engineer  
Sonoma County Water Agency  
PO Box 11628  
Santa Rosa, CA 95406  
(Email [commentletters@waterboards.ca.gov](mailto:commentletters@waterboards.ca.gov) & [randy.poole@scwa.ca.gov](mailto:randy.poole@scwa.ca.gov))

RE: Comments for May 6<sup>th</sup> Workshop on Order WR 2009-0027-DWR

Dear Chairman Hoppin and Members of the Board,

I am writing to express my concern regarding impacts related to Order WR 2009-0027-DWR and modifications in permit terms that would reduce those impacts. The reduction in flows will cause sever impacts to water quality, recreation, community water systems, over-summering juvenile salmon and Steelhead as well as the lower River economy that depends on a healthy Russian River.

In October of 2008 I postponed my Mermaid Educational Festival to move into a new salon location next to the Guerneville Bridge. My backyard is the Russian River. In October 2008 I did a river restoration project removing Ludwigia from a 20 foot X 20 foot area as depicted in attached pictures. As you know reduction of water flow to 35 CFS would encourage the Ludwigia growth causing the fish and their habitat to be even further compromised. This year I plan to educate through yet another Mermaid Festival the issue of low flow and I am even considering a date to hold a second Mermaid Festival earlier in the summer due to the severity of the low flow issue.

In order to reduce the impacts from reduced flows under Order WR 2009-0027-DWR we urge you on May 6<sup>th</sup> to take action to protect water quality and beneficial uses in the Russian River. Specifically we urge you to:

- Increase frequency of chemical water quality monitoring to every two weeks, with results posted promptly on a public web site to proactively prevent water quality problems such as algae blooms from increased nutrient concentrations.

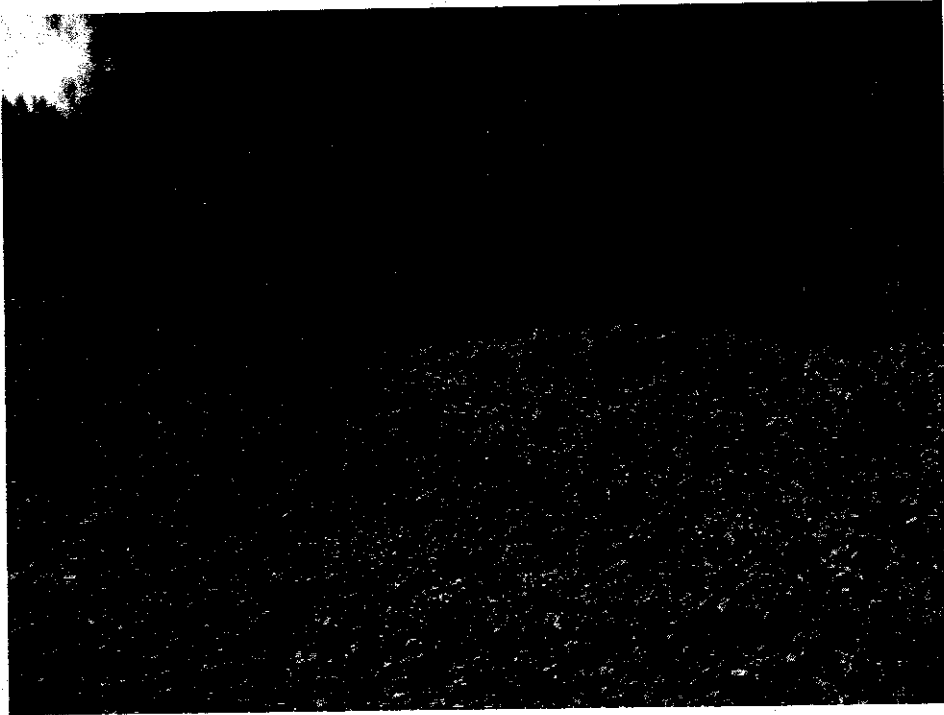
- Include new provisions in the order to require flow changes and response to violations in water quality standards or as needed to protect juvenile ESA listed fish over the summer. The Water Agency released water to protect grapes from frost on April 14<sup>th</sup> – 16<sup>th</sup>. So we expect increases to protect water quality as well.
- Installation of additional gauges as needed to ensure instantaneous flow compliance levels are maintained. In 2004 and 2007 compliance levels were violated under previous orders.
- A minimum of 25% mandatory water conservation for SCWA customers and all users downstream of Dry Creek to help maintain flows and conserve water in case of multi-year drought.
- Mandatory conservation by all permitted water diversions upstream of Dry Creek including agricultural and rural residential diversions in stream side wells pumping under flow.
- Additional prohibitions in order on diversions that are not permitted in critically dry conditions or if needed a separate order restraining those unpermitted diversions to protect water storage in Lake Mendocino and maintain higher flows.
- Keep order prohibition on commercial turf irrigation in SCWA service area and expand to include all commercial turf using water from the Russian River.
- We believe that modifying the order to include these provisions will improve protection of water quality, juvenile endangered fish and likely result in somewhat higher flows due to reduced diversions.

We greatly appreciate your consideration of our comments.

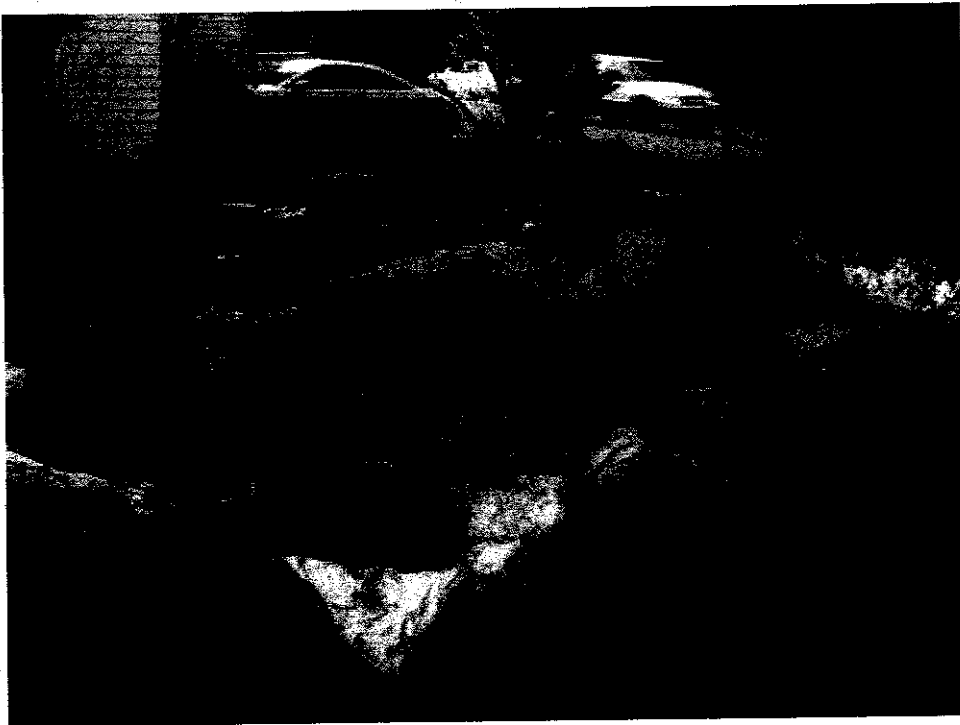
Sincerely,

Vira Burgerman  
The California Mermaid

---



Ludwigia Removal Project Site



Removed Ludwigia

---