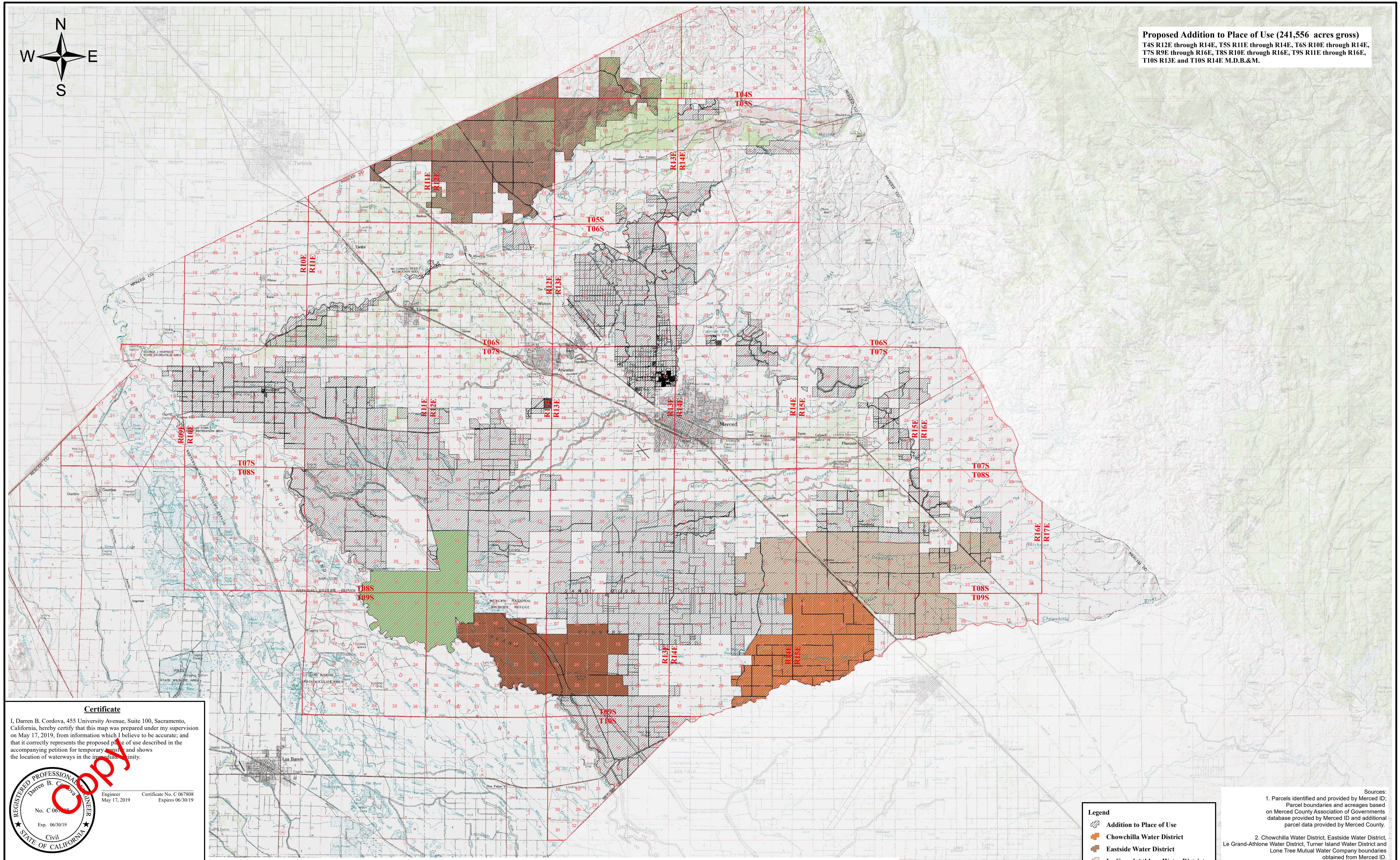




Proposed Addition to Place of Use (241,556 acres gross)
 T4S R12E through R14E, T5S R11E through R14E, T6S R10E through R14E,
 T7S R9E through R16E, T8S R10E through R16E, T9S R11E through R16E,
 T10S R13E and T10S R14E M.D.B.&M.



Certificate
 I, Darren B. Cordova, 455 University Avenue, Suite 100, Sacramento, California, hereby certify that this map was prepared under my supervision on May 17, 2019, from information which I believe to be accurate; and that it correctly represents the proposed place of use described in the accompanying petition for temporary transfer and shows the location of waterways in the immediate vicinity.

Engineer Certificate No. C 067808
 May 17, 2019 Expires 06/30/19

REGISTERED PROFESSIONAL ENGINEER
 Darren B. Cordova
 No. C 067808
 Exp. 06/30/19
 Civil
 STATE OF CALIFORNIA

MBK ENGINEERS
 455 University Avenue, Suite 100
 Sacramento, California 95825-6579
 (916) 456-4400

No.	Date	Approved	Revision

Merced Irrigation District
 Map to Accompany Petition for Temporary Transfer under License 2685 (Application 1224)

PROPOSED ADDITION TO PLACE OF USE

Job Number: 5520.7
 Requested By: AB
 Drawn By: MB
 Date: May 2019

Scale in Miles
 0 1 2

- Legend**
- Addition to Place of Use
 - Chowchilla Water District
 - Eastside Water District
 - Le Grand-Athlone Water District
 - Lone Tree Mutual Water Company
 - Turner Island Water District

- Sources:
1. Parcels identified and provided by Merced ID; Parcel boundaries and acreages based on Merced County Association of Governments database provided by Merced ID and additional parcel data provided by Merced County.
 2. Chowchilla Water District, Eastside Water District, Le Grand-Athlone Water District, Turner Island Water District and Lone Tree Mutual Water Company boundaries obtained from Merced ID.
 3. Basemap - U.S. Geological Survey 1:100,000 Quadrangles.
 4. Section, Township, Range delineation and labels based on DWR projected PLSS lines for Merced County.