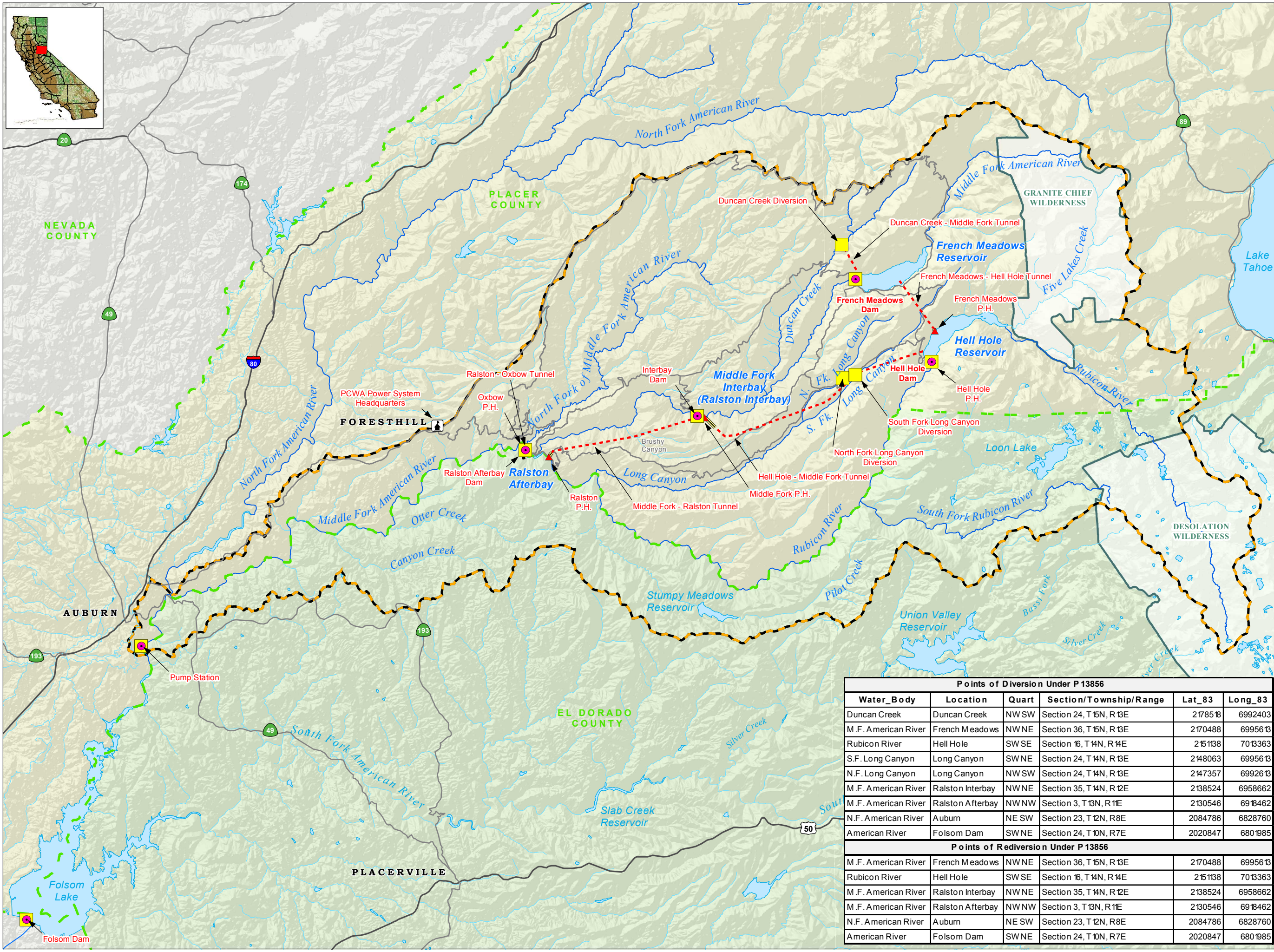


Attachment B

PCWA & EBMUD Points of Diversion and Rediversion




- Project Facilities***
- ▲ Powerhouse
 - - - - - Tunnel
 - = = = = = Penstock
- * All MFP facilities labeled in red.
- Transportation**
- Major Road
 - Minor Road
- Hydrography**
- Watercourse
 - Water Body
- Designated Boundary**
- - - - - County Boundary
 - Wilderness Area
 - Middle Fork American River Watershed**

**Modified from Calwater Ver. 2.2 to represent drainage above high-water mark of Folsom Lake

Points of Diversion (POD) and Rediversion (PORD)

- POD
- PORD

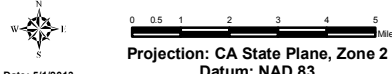
Points of Diversion Under P 13856					
Water_Body	Location	Quart	Section/Township/Range	Lat_83	Long_83
Duncan Creek	Duncan Creek	NW SW	Section 24, T 16N, R 13E	2178513	6992403
M.F. American River	French Meadows	NW NE	Section 36, T 16N, R 13E	2170488	6995613
Rubicon River	Hell Hole	SW SE	Section 16, T 14N, R 14E	215138	7013363
S.F. Long Canyon	Long Canyon	SW NE	Section 24, T 14N, R 13E	2148063	6995613
N.F. Long Canyon	Long Canyon	NW SW	Section 24, T 14N, R 13E	2147357	6992613
M.F. American River	Ralston Interbay	NW NE	Section 35, T 14N, R 12E	2138524	6958662
M.F. American River	Ralston Afterbay	NW NW	Section 3, T 13N, R 11E	2130546	6914462
N.F. American River	Auburn	NE SW	Section 23, T 12N, R 8E	2084786	6828760
American River	Folsom Dam	SW NE	Section 24, T 10N, R 7E	2020847	6801985
Points of Rediversion Under P 13856					
M.F. American River	French Meadows	NW NE	Section 36, T 16N, R 13E	2170488	6995613
Rubicon River	Hell Hole	SW SE	Section 16, T 14N, R 14E	215138	7013363
M.F. American River	Ralston Interbay	NW NE	Section 35, T 14N, R 12E	2138524	6958662
M.F. American River	Ralston Afterbay	NW NW	Section 3, T 13N, R 11E	2130546	6914462
N.F. American River	Auburn	NE SW	Section 23, T 12N, R 8E	2084786	6828760
American River	Folsom Dam	SW NE	Section 24, T 10N, R 7E	2020847	6801985



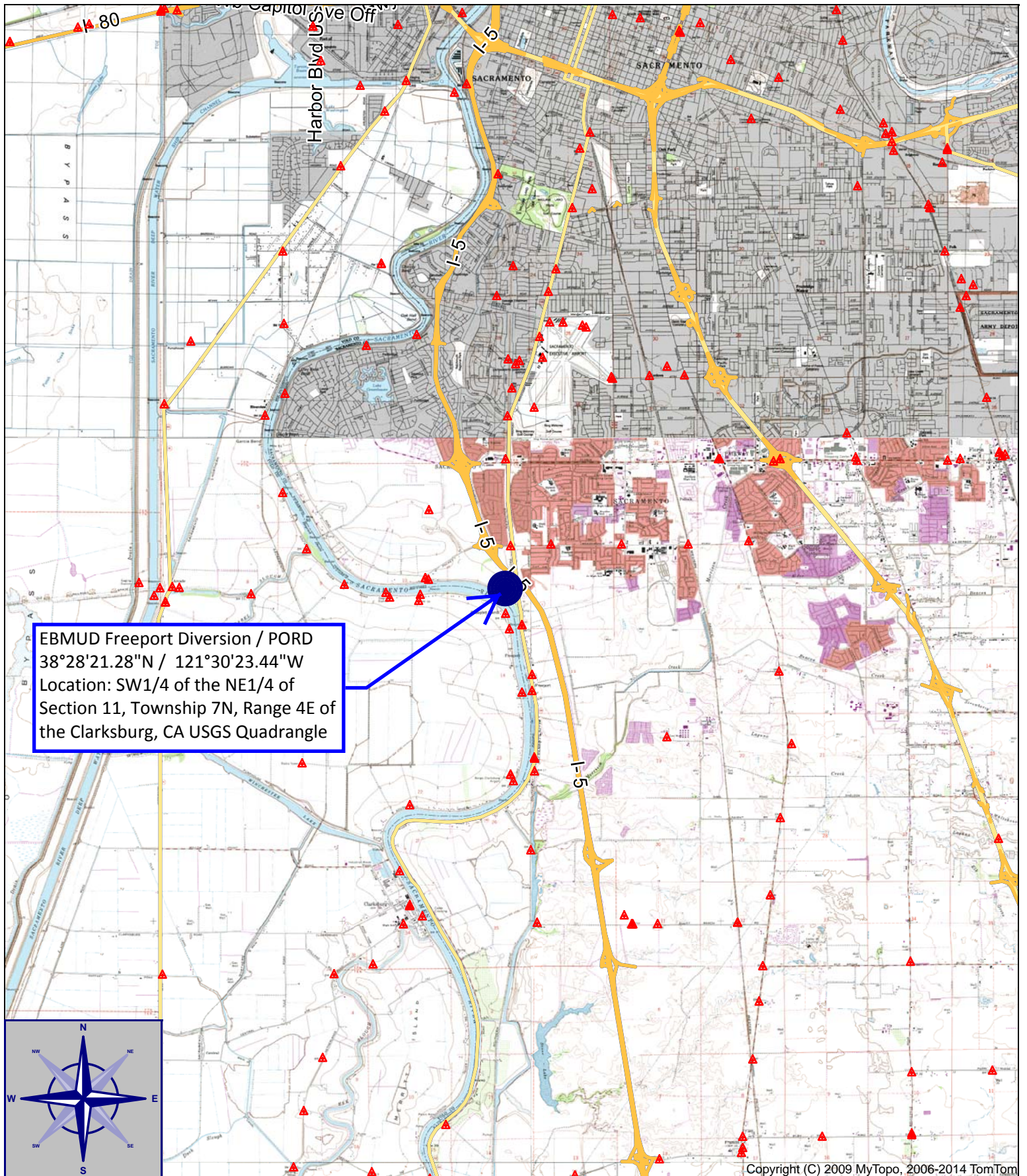
Placer County Water Agency
PCWA Petition for Change Involving Water Transfers
February 2014

Attachment B1

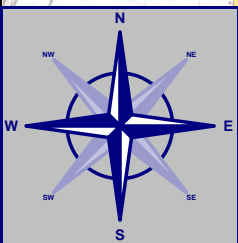
Points of Diversion and Rediversion under P13856



Projection: CA State Plane, Zone 2
Datum: NAD 83
Date: 5/12/2013

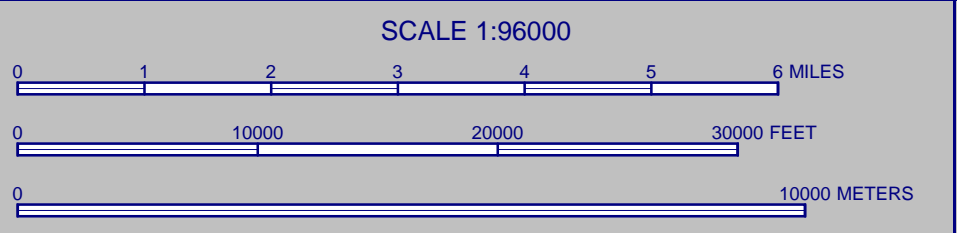


EBMUD Freeport Diversion / PORD
 38°28'21.28"N / 121°30'23.44"W
 Location: SW1/4 of the NE1/4 of
 Section 11, Township 7N, Range 4E of
 the Clarksburg, CA USGS Quadrangle



Copyright (C) 2009 MyTopo, 2006-2014 TomTom

ATTACHMENT B2:
FREEPORT DIVERSION / EBMUD PORD
SWRCB TRANSFER PETITION
PCWA/EBMUD
FEBRUARY 2014



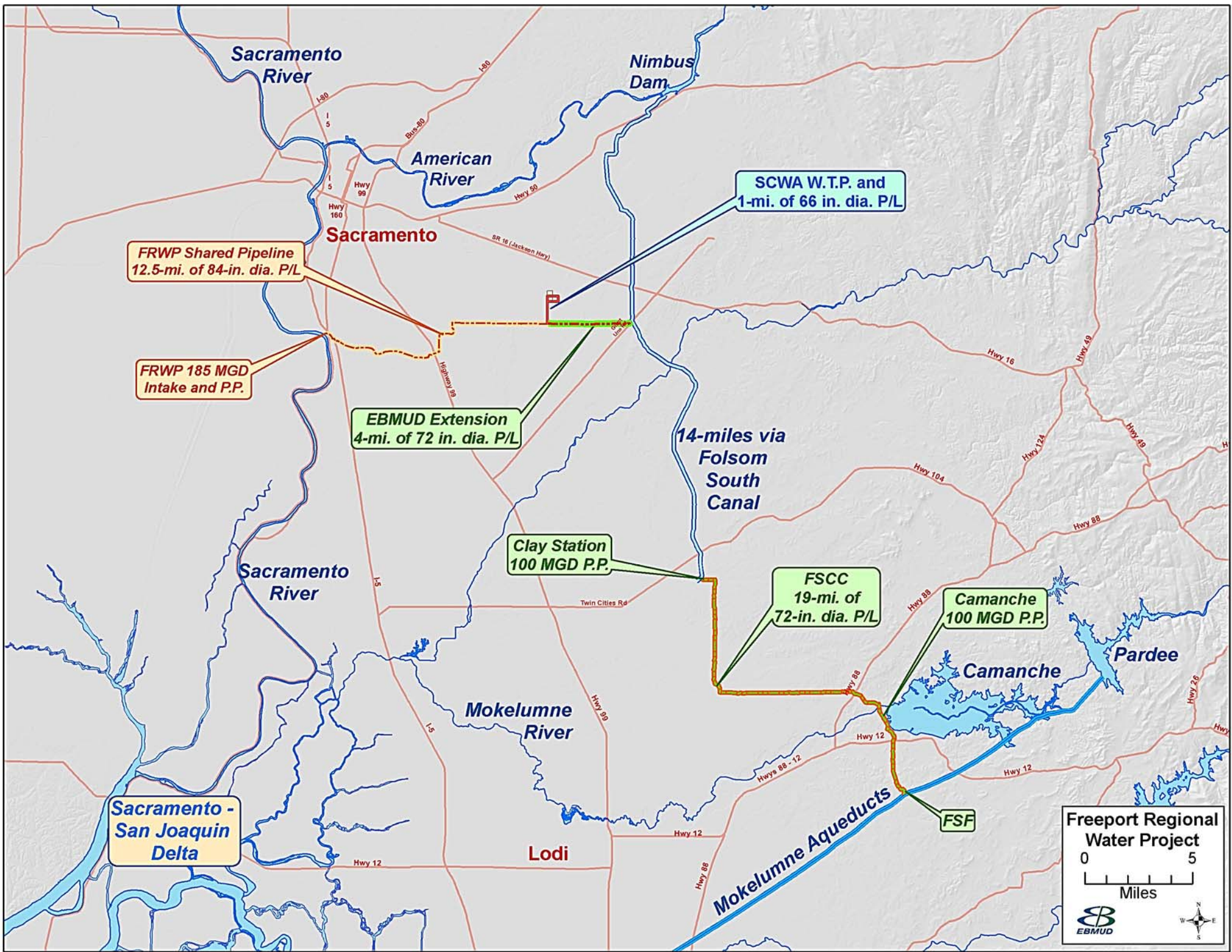


Google earth

feet
meters



Attachment B3- EBMUD Freepoint Diversion



FRWP Shared Pipeline
12.5-mi. of 84-in. dia. P/L

FRWP 185 MGD
Intake and P.P.

EBMUD Extension
4-mi. of 72 in. dia. P/L

Clay Station
100 MGD P.P.

FSCC
19-mi. of
72-in. dia. P/L

Camanche
100 MGD P.P.

Sacramento -
San Joaquin
Delta

SCWA W.T.P. and
1-mi. of 66 in. dia. P/L

14-miles via
Folsom
South
Canal

**Freeport Regional
Water Project**

0 5
Miles