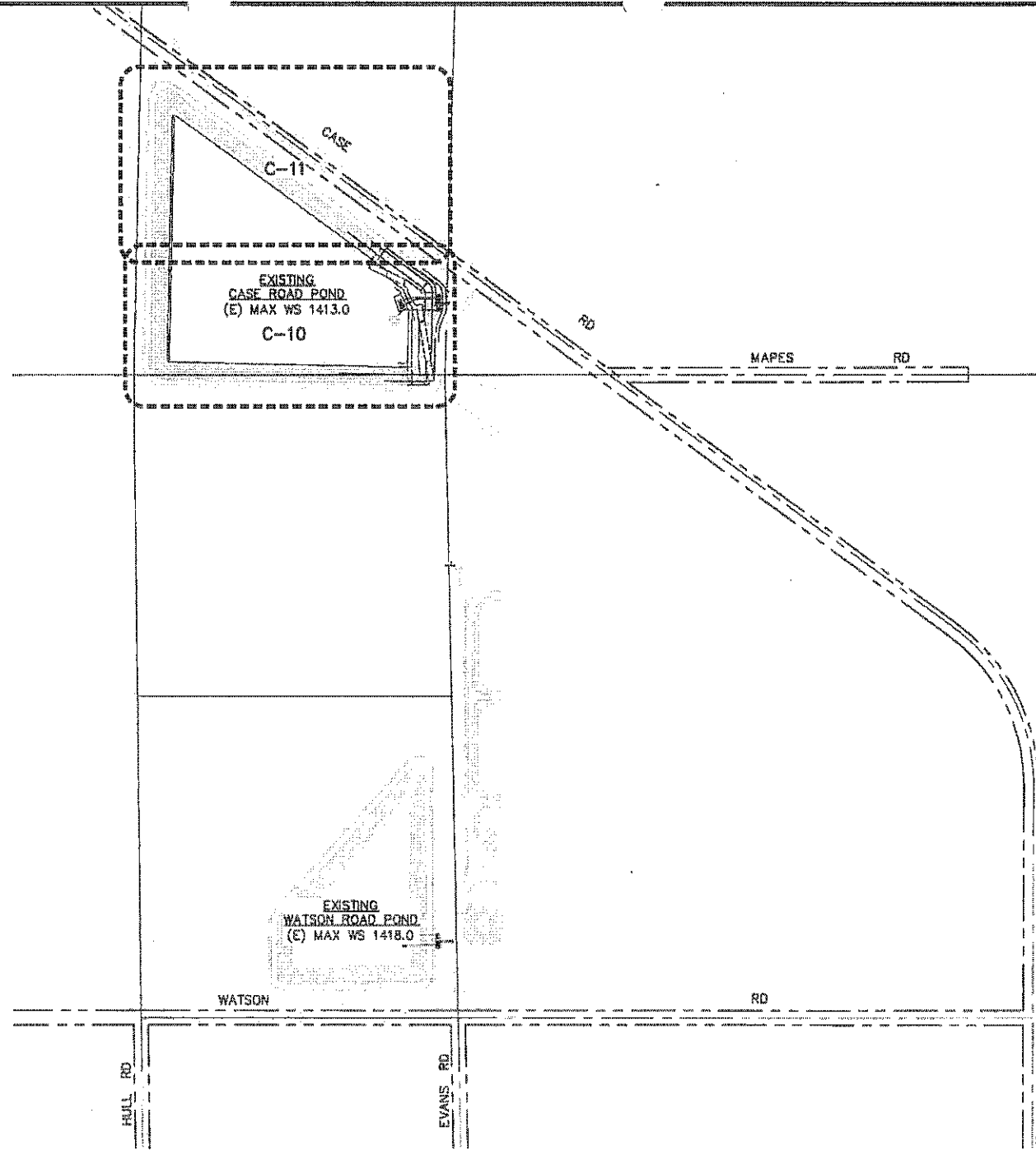
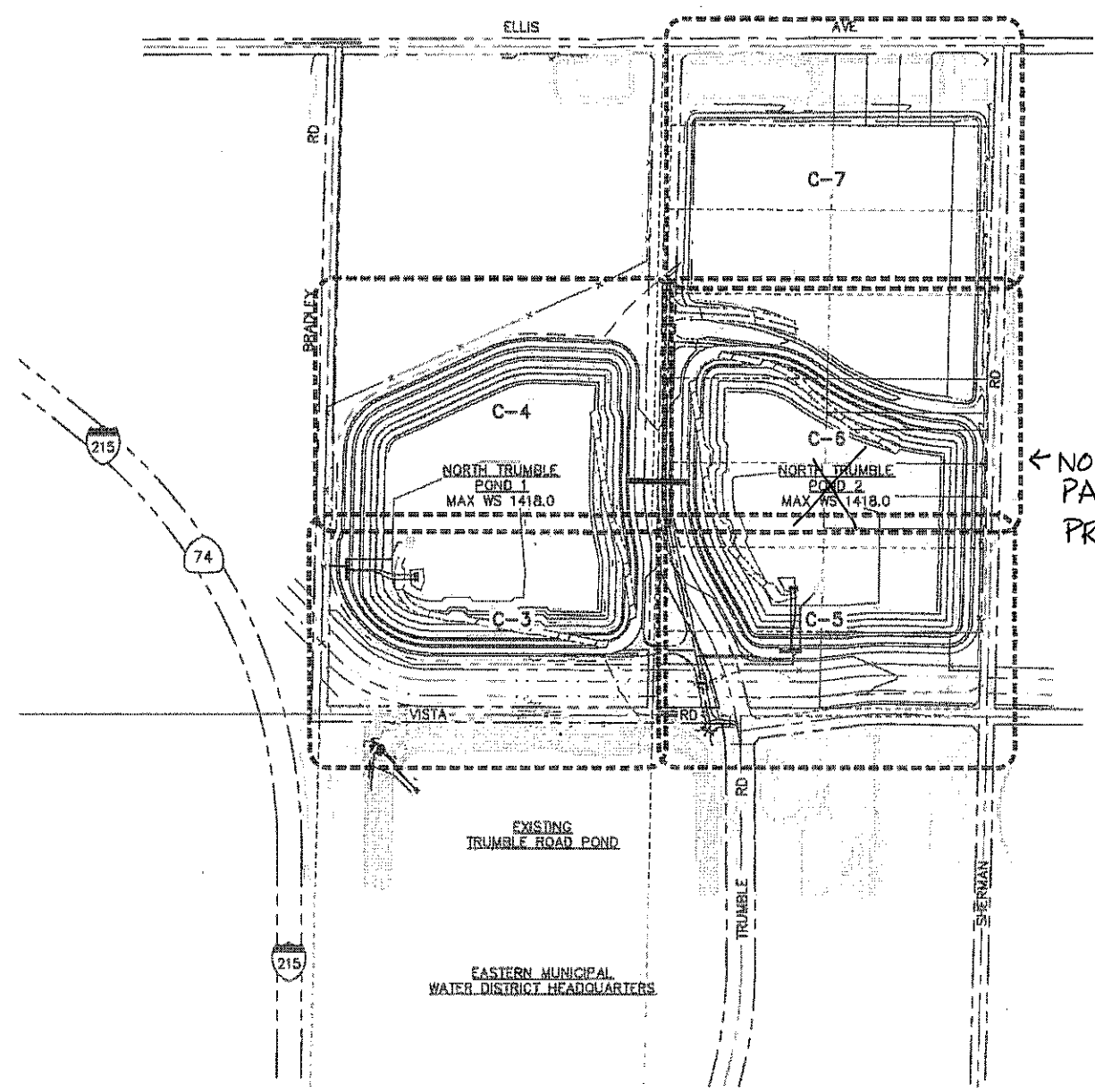


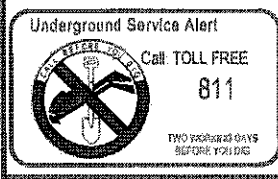
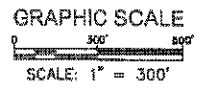
\\sdc\proj\proj\13\Engineering\Eastern\RMW\2505 N Trumble Rd Ponds Expansion Project\06-Design\DWG\2505 SH04 C-1 (Grading Plans for Map).dwg 7/24/2014 10:05 AM



**CASE ROAD POND GRADING KEY MAP**  
SCALE: 1" = 300'



**NORTH TRUMBLE PONDS 1 AND 2 GRADING KEY MAP**  
SCALE: 1" = 300'



PLANS PREPARED BY  
**DUDEK**  
 3605 Main Street, Suite 250  
 Riverside, CA 92501  
 951.308.2100 Fax 951.308.2105  
 ROBERT J. GILMUD R.C.E. No. 41026 DATE



REVISIONS				
NO.	DATE	INITIALS	DESCRIPTION	APPROVAL

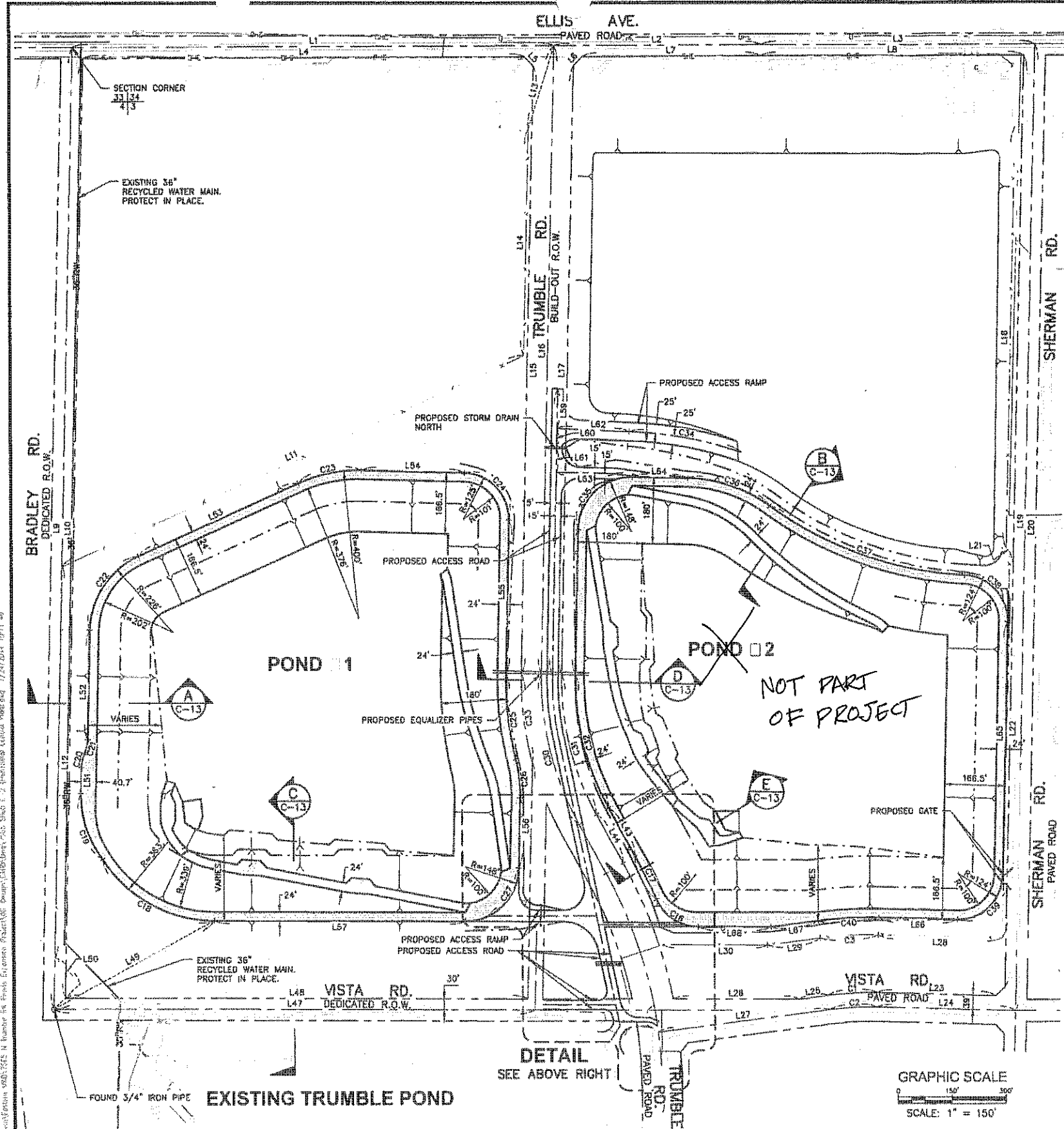
APPROVED BY:  
 \_\_\_\_\_ DATE \_\_\_\_\_  
 DIRECTOR OF ENGINEERING  
 REFERENCES

EASTERN MUNICIPAL WATER DISTRICT  
 PROJECT MANAGER \_\_\_\_\_ DATE \_\_\_\_\_  
 APPROVALS  
 PROJECT ENG \_\_\_\_\_  
 INSPECTION \_\_\_\_\_  
 RW OPERATIONS \_\_\_\_\_  
 MAINTENANCE \_\_\_\_\_

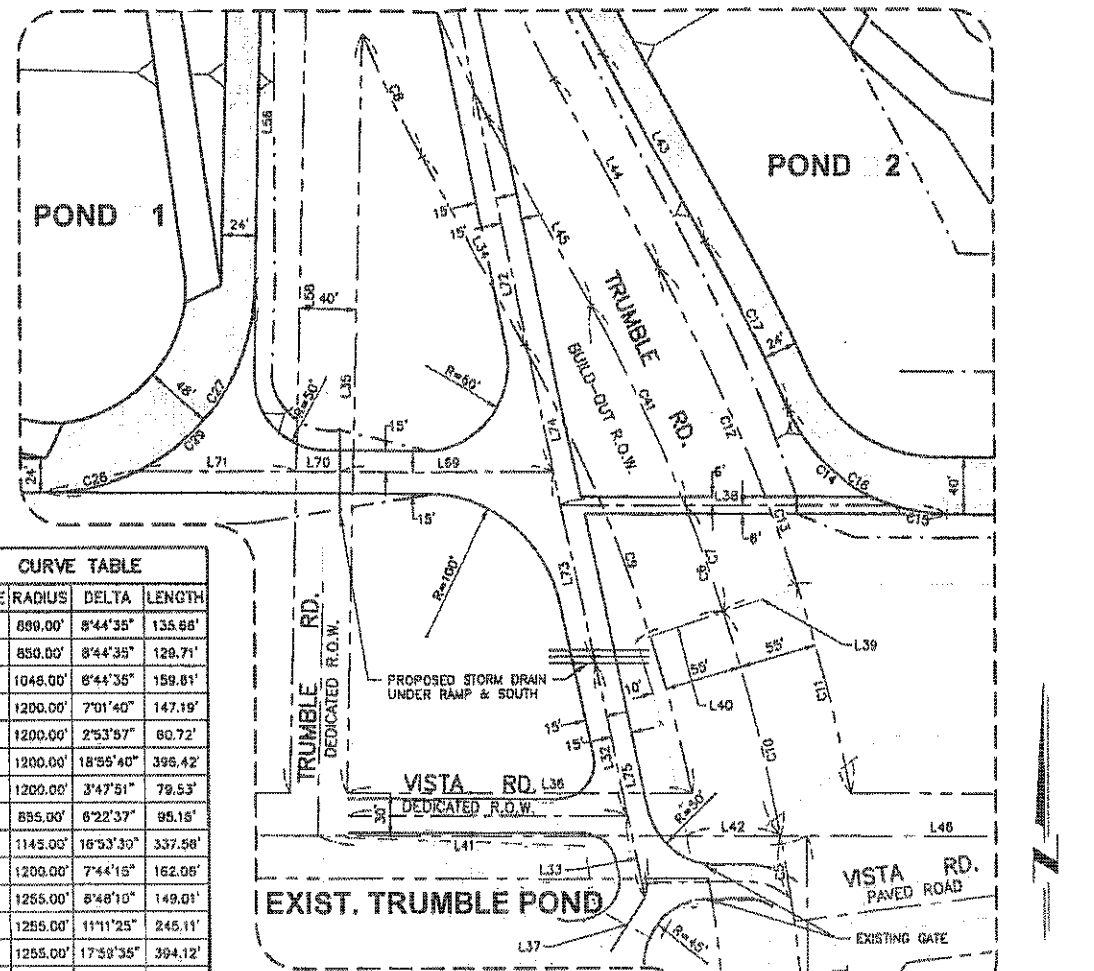
DESIGNED \_\_\_\_\_ DATE \_\_\_\_\_  
 DRAWN \_\_\_\_\_  
 CHECKED \_\_\_\_\_  
 SUBMITTED \_\_\_\_\_  
 SCALE: AS SHOWN

EASTERN MUNICIPAL WATER DISTRICT  
 RIVERSIDE COUNTY, CALIFORNIA  
 NORTH TRUMBLE RECYCLED WATER  
 PONDS EXPANSION PROJECT  
 GRADING PLANS  
 KEY MAP

ID  
 6A  
 W/D  
 C/D  
 E/D  
 SHT 4 OF 55  
 DWG C-1



CURVE TABLE			
CURVE	RADIUS	DELTA	LENGTH
C1	800.00'	8°44'35"	135.86'
C2	850.00'	8°44'35"	129.71'
C3	1048.00'	8°44'35"	159.81'
C4	1200.00'	7°01'40"	147.19'
C5	1200.00'	2°53'57"	60.72'
C6	1200.00'	18°55'40"	395.42'
C7	1200.00'	3°47'51"	79.53'
C8	855.00'	6°22'37"	95.15'
C9	1145.00'	16°53'30"	337.58'
C10	1200.00'	7°44'15"	162.06'
C11	1255.00'	5°48'10"	149.01'
C12	1255.00'	11°11'25"	245.11'
C13	1255.00'	17°59'35"	394.12'
C14	124.00'	48°35'04"	105.15'
C15	124.00'	17°33'48"	38.73'
C16	124.00'	66°28'52"	143.88'
C17	1293.00'	5°46'02"	130.15'
C18	363.00'	57°10'43"	382.28'
C19	279.98'	34°03'26"	166.41'
C20	90.00'	24°54'36"	39.13'
C21	90.00'	24°54'36"	39.13'
C22	235.05'	64°19'04"	253.76'
C23	400.00'	25°40'88"	179.30'
C24	125.00'	90°00'00"	196.35'
C25	897.00'	15°06'14"	238.46'
C26	400.00'	15°06'28"	105.47'
C27	148.00'	62°44'27"	182.07'
C28	148.00'	25°01'08"	67.21'
C29	148.00'	88°45'36"	229.27'
C30	803.21'	30°24'04"	426.18'
C31	745.00'	30°31'21"	396.88'
C32	707.00'	30°31'21"	376.63'
C33	855.00'	18°24'21"	244.82'
C34	1040.00'	17°21'14"	315.00'
C35	148.00'	90°00'00"	232.48'
C36	400.00'	34°30'28"	248.91'
C37	1000.00'	33°05'05"	578.31'
C38	124.00'	88°40'29"	191.91'
C39	124.00'	80°00'02"	194.70'
C40	1093.00'	8°44'35"	166.79'
C41	1200.00'	7°23'34"	154.83'



LINE TABLE			LINE TABLE		
LINE	BEARING	LENGTH	LINE	BEARING	LENGTH
L1	N89°51'00"E	1320.00'	L26	N89°48'21"W	346.04'
L2	N89°51'00"E	569.36'	L27	N82°44'07"E	474.74'
L3	N89°57'47"E	757.04'	L28	N88°31'16"W	344.99'
L4	N89°51'00"E	1211.33'	L29	N82°44'07"E	146.23'
L5	N42°02'18"W	34.43'	L30	N89°48'21"W	288.17'
L6	N43°11'16"E	33.50'	L31	N00°05'21"W	278.87'
L7	N89°51'00"E	492.78'	L32	N11°56'55"W	109.94'
L8	N89°57'47"E	726.24'	L33	N11°56'55"W	58.30'
L9	N01°25'48"E	2610.29'	L34	N28°05'31"W	151.36'
L10	N01°25'48"E	2359.48'	L35	N01°26'03"E	531.59'
L11	N88°44'82"E	1390.98'	L36	N88°48'21"W	247.05'
L12	N01°25'48"E	1061.23'	L37	N33°33'19"E	45.00'
L13	N17°23'45"E	236.09'	L38	N89°48'21"W	235.86'
L14	N01°25'50"E	615.76'	L39	N72°05'53"E	64.50'
L15	N01°25'50"E	1548.98'	L40	N72°05'53"E	65.00'
L16	N01°26'03"E	1708.16'	L41	N89°48'21"W	348.34'
L17	N01°25'50"E	1663.29'	L42	N89°48'21"W	66.14'
L18	N01°26'40"E	1143.53'	L43	N29°05'31"W	151.36'
L19	N01°26'40"E	2530.88'	L44	N29°05'31"W	151.36'
L20	N01°26'40"E	2624.75'	L45	N29°05'31"W	151.36'
L21	N43°31'20"W	14.14'	L46	S89°48'21"E	193.65'
L22	N01°26'40"E	1048.69'	L47	N89°48'21"W	1319.61'
L23	N88°31'18"W	330.02'	L48	N89°48'21"W	1269.60'
L24	N88°31'18"W	384.99'	L49	N81°32'00"E	500.43'
L25	N82°44'07"E	79.44'	L50	N43°34'12"W	87.38'
			L51	N01°25'48"E	70.29'
			L52	N01°25'48"E	297.75'
			L53	N88°44'32"E	480.71'
			L54	N88°34'10"W	282.89'
			L55	N01°25'50"E	416.44'
			L56	N01°26'03"E	190.32'
			L57	N89°48'16"W	688.85'
			L58	N01°26'03"E	641.01'
			L59	N01°25'50"E	108.01'
			L60	N01°25'50"E	55.74'
			L61	N01°25'50"E	63.15'
			L62	N87°22'12"W	189.32'
			L63	N88°34'10"W	164.14'
			L64	S88°34'10"E	151.36'
			L65	S01°28'40"W	687.81'
			L66	N88°31'18"W	215.66'
			L67	S82°44'07"W	150.13'
			L68	N89°48'21"W	200.70'
			L69	S89°48'21"E	152.87'
			L70	S89°48'21"E	31.31'
			L71	S89°48'21"E	112.24'
			L72	N11°56'55"W	271.80'
			L73	N11°56'55"W	137.58'
			L74	N11°56'55"W	576.41'
			L75	N11°56'55"W	167.24'

**DETAIL**  
SCALE 1" = 60'  
GRAPHIC SCALE

**DETAIL**  
SEE ABOVE RIGHT

**GRAPHIC SCALE**  
SCALE: 1" = 150'

**Underground Service Alert**  
Call TOLL FREE 811  
811  
PRO-WORLDS OATS  
05/09E 7/11/10

PLANS PREPARED BY  
**DUDEK**  
3485 Main Street, Suite 250  
Riverside, CA 92501  
951.309.2100 Fax 951.309.2105

ROBERT J. OHLUND R.C.E. No. 41804 DATE

REVISIONS			
NO	DATE	INITIALS	DESCRIPTION

APPROVED BY: \_\_\_\_\_ DATE \_\_\_\_\_

DIRECTOR OF ENGINEERING \_\_\_\_\_ DATE \_\_\_\_\_

**REFERENCES**

**EASTERN MUNICIPAL WATER DISTRICT**

PROJECT MANAGER \_\_\_\_\_ DATE \_\_\_\_\_

APPROVALS: PROJECT ENG \_\_\_\_\_, RESPECTOR \_\_\_\_\_, RW OPERATIONS \_\_\_\_\_, MAINTENANCE \_\_\_\_\_

DESIGNED \_\_\_\_\_ DATE \_\_\_\_\_

DRAWN \_\_\_\_\_ CHECKED \_\_\_\_\_

SUBMITTED \_\_\_\_\_

SCALE: AS SHOWN

**EASTERN MUNICIPAL WATER DISTRICT**  
RIVERSIDE COUNTY, CALIFORNIA

**NORTH TRUMBLE RECYCLED WATER PONDS EXPANSION PROJECT**

**HORI ONTAL CONTROL PLAN**

10 SA \_\_\_\_\_  
11 WO \_\_\_\_\_  
12 CO \_\_\_\_\_  
COORD \_\_\_\_\_  
SHT 5 OF 65  
DATE \_\_\_\_\_

**C-2**