

4C Sample Outreach Materials

The lead cause of oil spills in the ocean is NOT from tanker accidents, it's from citizens. Nationwide every year 350 million gallons of oil is discarded in storm drains, waterways, and soil. This is 30 times greater than the largest tanker spill!



MONTEREY BAY is the nation's largest Marine Sanctuary, encompassing over 5,300 square miles along the Central California coast from Marin County near San Francisco southward to Cambria in San Luis Obispo County. The Sanctuary protects many habitats, ranging from sand flats along the shoreline to the nation's most extensive kelp forests and one of the world's largest underwater canyons. Surrounding wetlands provide nursery grounds for juvenile fish, help protect against flooding and improve water quality by filtering out harmful pollutants. Nutrient-rich currents nourish the area, supporting a productive and diverse marine ecosystem where countless species, many of them threatened or endangered, make their homes.

INFORMATIC SOURCES

For motor oil collection services, household hazardous waste disposal, and recycling — See Yellow Pages under Recycling or call your city public works department.

Please do not mix used motor oil with antifreeze, transmission fluid, gasoline, or other contaminants.

MOTOR OIL RECYCLING:

City of Monterey	(408) 372-7977
City of Salinas	(408) 758-7925
City of Santa Cruz	(408) 429-3666
City of Watsonville	(408) 728-6133
Half Moon Bay	(415) 726-4718
Marin County	(415) 499-7868
Monterey County	(408) 384-5313
	(408) 755-4541
San Benito County	(408) 637-3725
San Luis Obispo County	(805) 782-8530
San Mateo County	(415) 363-4718
Santa Cruz County	(408) 454-2606

For location of local motor oil collection centers throughout the state call: **(800) CLEAN-UP** or on the Internet:

<http://www.clwmb.ca.gov/wpfusedoil/hotsrch.htm>

For statewide recycling, composting, and household hazardous waste information and referrals to local service sites call:

California Integrated Waste Management Board Recycling Hotline: (800) 553-2962

For more information on how to prevent polluted runoff and protect watersheds call: **The Water Quality Protection Program at the Monterey Bay National Marine Sanctuary: (408) 647-4201**

This brochure is a joint effort of the Water Quality Protection Program for the Monterey Bay National Marine Sanctuary and the City of Monterey and Santa Cruz. Funded in part by the United States Environmental Protection Agency Assistance Agreement No. C9-99286-95-0 to the State Water Resources Control Board, Contract No. 5-139-253-0, and a used motor oil grant provided by the California Integrated Waste Management Board. The contents of this document do not necessarily reflect the views and policies of the Environmental Protection Agency or the State Water Resources Control Board.

Special thanks to the City of Arcata, Environmental Services Department, City of Eureka Utilities Department, Santa Clara Valley Nonpoint Source Pollution Control Program, and Gary Bloomfield, the County of Monterey and the California Integrated Waste Management Board.

Monterey Bay Begins on Your Street



Help prevent pollution of Monterey Bay waters



Storm Drain Pollution & You!

Even if you live miles from the Sanctuary, you may be contributing harmful pollutants to coastal waters. Urban runoff is caused by chemicals and other materials that are poured or washed down storm drains. Unlike household sewer systems, storm drain pollution is **NOT** cleansed by sewage treatment plants - it flows directly through storm drains and out into Sanctuary waters untreated. You, your friends and family all depend on healthy waterways and oceans. Remember this when you go to the beach, surf, swim in the ocean, go fishing, and eat local sea food.

TYPES OF POLLUTION

Motor oil, pesticides, animal waste, automotive fluids, fertilizers, chemicals, and litter, all make their way into oceans every day.

- One quart of motor oil dumped down a storm drain can contaminate 250,000 gallons of water. Oil from one engine (4-6) quarts can cause an 8 acre slick.
- Every year 350 million gallons of used motor oil is discarded in storm drains, waterways, and soil. This is 30 times greater than the Exxon Valdez oil spill!
- Some wildlife get their water from polluted storm drains. Animals not only get sick from the water, but oil and gasoline stick to feathers and fur. When this happens, feathers and fur lose the ability to provide warmth for the animal.

WHAT YOU CAN DO

RECYCLE

• It takes 42 gallons of crude oil to make two and a half quarts of lubricating oil. The same two and a half quarts can be produced with half as much energy from only one gallon of recycled oil. Take used motor oil and antifreeze to a gas station or hazardous waste site that recycles these products. Call the Recycling Hotline: (408) 384-5313 Monterey County (408) 454-2606 Santa Cruz County


- Recycle plastic, aluminum, and paper. Trash poses a threat to marine animals as they try to eat it or get trapped or tangled in the debris.

REUSE

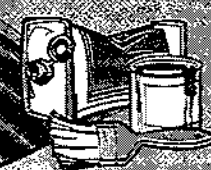
• Rinse paint brushes in the sink. Filter and reuse paint thinner or brush cleaners. Dispose of used paint and thinners at a hazardous waste site.

REDUCE

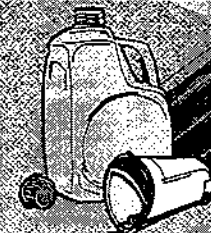
- Use pesticides (look for nontoxic alternatives whenever possible) and fertilizers carefully and sparingly. Do not use if rain is forecast.
- Dispose of animal waste in garbage cans or toilets, not in storm drains
- Wash cars with biodegradable, phosphate free detergent.



For more information on urban runoff call
the Monterey Bay National Marine
Sanctuary (408) 647-4201



CONTAMINACIÓN DE LAS ALCANTARILLAS (ESCAPE URBANO) Y TÚ



Incluso si tu vives muchas millas del santuario, es posible que estes contribuyendo a la contaminación peligrosa de las aguas costales. El escape urbano está causado por químicos y otros materiales que son echados, o lavados por el sistema de drenaje/alcantarillas. Desafortunadamente, en el caso del sistema de drenaje de las casas, la contaminación del sistema de drenaje de las lluvias/alcantarillas no es limpiado por una planta de tratamiento de aguas residuales—corre directamente, por medio de las alcantarillas, al agua del santuario sin tratamiento. Tú, tus amigos y familia dependen de canales de agua saludable y los océanos. Recuerda esto cuando vas a la playa, nadas en el mar, pescas, y comes comida del mar local.

TIPOS DE CONTAMINACIÓN

Aceite de motor, pesticidas, heces de animales, fluidos de automovil, fertilizadores, químicos, y basura, todos estos encuentran su camino a los océanos todos los días.

- Un cuarto de aceite de motor botado por las alcantarillas puede contaminar 250,000 galones de agua. Aceite de un motor(4-6) cuartos de galón, puede causar la contaminación de 8 acres.
- Cada año 350 millones galones de aceite usado por motor son desechado en las alcantarillas, canales, y suelo. ¡Esto es 30 veces más grande que el derrame de aceite del Exxon Valdez!
- Alguna vida salvaje consigue su agua de alcantarillas contaminadas. Los animales no sólo se enferman por el agua, pero también el aceite y la gasolina se les pegan a las plumas y pelaje. Cuando esto ocurre, las plumas y pelaje pierden su habilidad de proveer calor al animal.

¿QUÉ PUEDES HACER TÚ?

RECICLAR


- Se necesitan 42 galones de aceite crudo para hacer dos cuartos y medio de aceite lubricante. Esos dos galones y medio pueden ser producidos con la mitad de la energía de un galon de aceite reciclado. Tome su aceite de motor usado y su anticongelante a una gasolinera, o a un sitio de deshechos peligrosos que recicla estos productos. Llame a la línea urgente de reciclaje: (408) 384-5313 Condado de Monterey (408) 454-2606 Condado de Santa Cruz
- Recicle plásticos, aluminio, y papel. La basura es una amenaza a la vida marina, ya que ellos tratan de comersela, o quedan atrapados o enredados en los escombros.

USAR DE NUEVO

- Lave sus brochas de pintura en el lavamanos. Filtre y use de nuevo los aclaradores de pintura, o limpiadores de brochas. Desheche pintura usada e aclaradores de pintura en un sitio de deshechos peligrosos.

REDUCIR

- Use pesticidas (busque alternativas no tóxicas cuando sea posible) y fertilizadores con mucho cuidado y escasamente. No use si el previsión es de lluvia.
- Lave su automovil con detergente biodegradable sin fosfato.
- Desheche las heces de animal en los basureros o tasas de baño, no en los alcantarillados.



Para mas información, lame al
número (408) 647-4201

Know Your Enemy!

If you don't know what the pest is, bring a sample of the pest and the damage it is causing, in a closed jar, to:

- a reputable nursery
- County Agricultural Commissioner
(510) 670-5232
- U.C. Cooperative Extension Office
(510) 670-5200

How Safe Is This Pesticide?

For information on pesticide safety, contact:

- Poison Control Center (415) 476-6600
- National Pesticide Telecommunications Network, EPA-funded. For emergencies and information on health effects, 24-hr hotline: 1-800-858-7378.
- *Citizen's Guide to Pesticides*, EPA; R. Woods, Consumer Information Center-Y. P.O. Box 100, Pueblo CO 81002. (50¢) Request #426X.

How Do I Get Rid of Old Pesticides?


If pesticides cannot be used up, or given to neighbors, community organizations or gardening clubs, they can be stored until one of the Alameda County household hazardous waste collection facilities opens. These facilities will receive hazardous waste, free of charge, from Alameda County residents and certain small businesses. For more information call 1-800-606-6606 (from within the County) or 1-510-670-6460 (from outside the County).

For More Copies of This Brochure, contact:

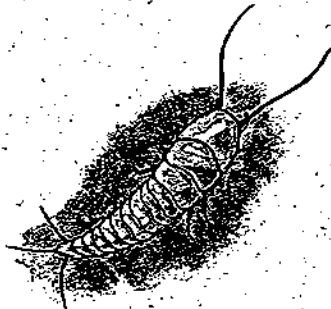
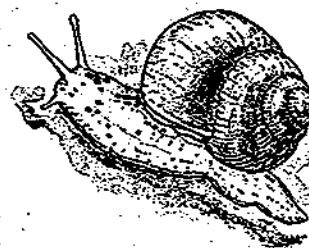
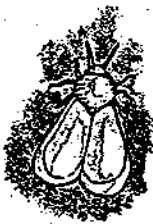


Alameda County
Urban Runoff
Clean Water Program

399 Elmhurst Street, Hayward CA 94544
(510) 670-5543 FAX (510) 782-1939

Printed on Recycled Paper 

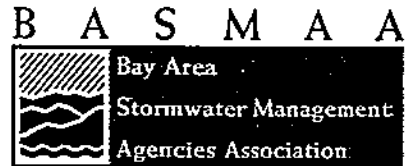
Bugged?



**Common-Sense Techniques
& Less-Toxic Products
For Pest Control...**

Grow It!

The Less-Toxic
Garden.
Control Pests & Plant Disease
Using Less-Toxic Methods.



Congratulations! You have taken the first step to create a safer place for yourself, your family and our environment. This guide will help you create a vibrant garden and do the earth a good turn by showing you how to:

- Create healthy soil
- Plant the right plants
- Reduce toxic chemical use
- Control pests naturally

A word about garden chemicals:

Fish and wildlife are harmed by improper use and disposal of chemicals:

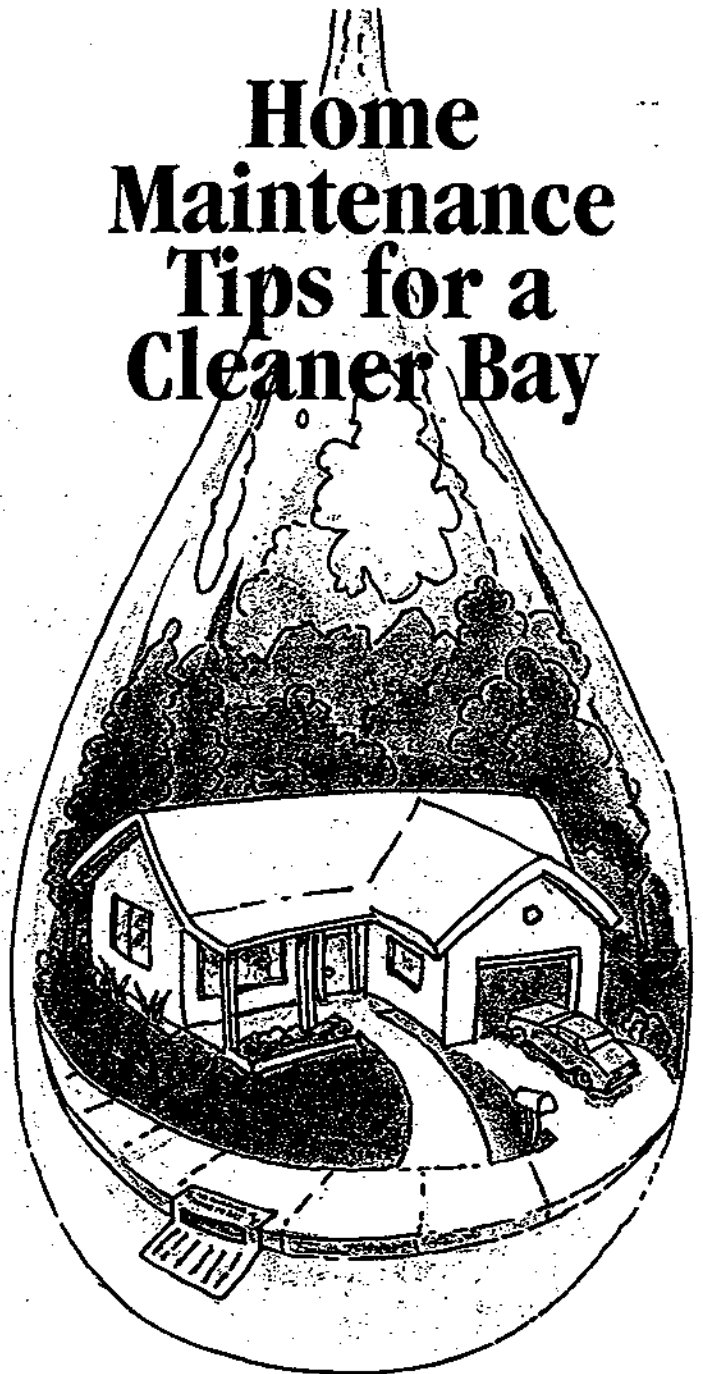
- Chemicals over-applied or not used according to label directions
- Chemicals poured down household drains
- Chemicals washed into storm drains by rain or overwatering
- Chemicals thrown away in the garbage can cause problems for landfills

Local resources for proper disposal of chemicals exist to help you. Keep reading for better alternatives.

For more information to help protect our Bay Area waters call:
1-888-Bay-Wise
(1-888-229-9473)

The Bay Area Stormwater Management Agencies Association (BASMAA) is a group of local water quality agencies focused on regional challenges and opportunities to improving the quality of storm water runoff to the San Francisco Bay and Delta.

Home Maintenance Tips for a Cleaner Bay

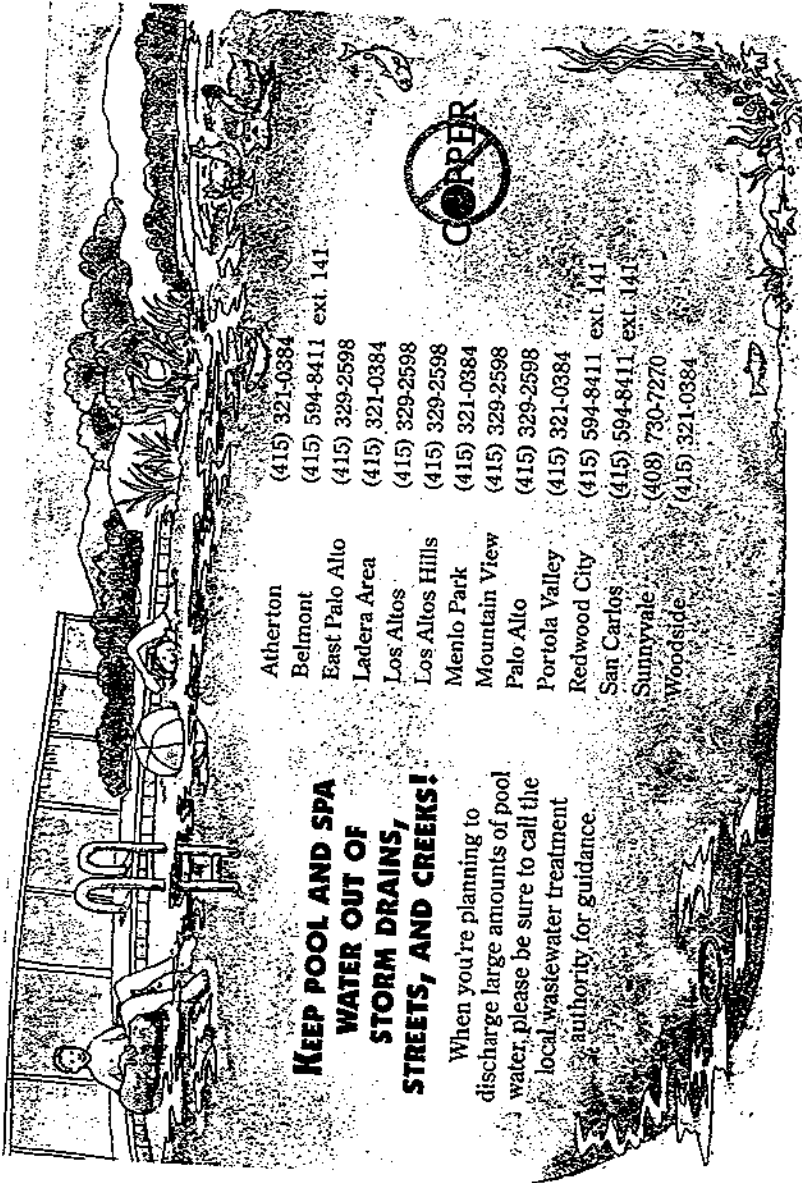


Santa Clara Valley
Nonpoint Source
Pollution Control Program

Whether you do the work yourself
or hire someone, you can help
protect water quality



Santa Clara Valley
Nonpoint Source
Pollution Control Program



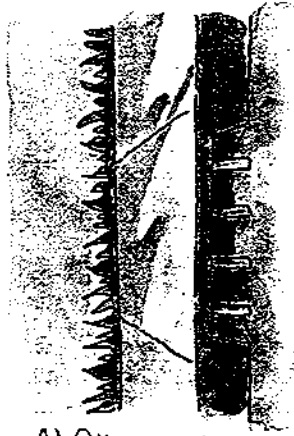
**KEEP POOL AND SPA
WATER OUT OF
STORM DRAINS,
STREETS, AND CREEKS!**

When you're planning to discharge large amounts of pool water, please be sure to call the local wastewater treatment authority for guidance.

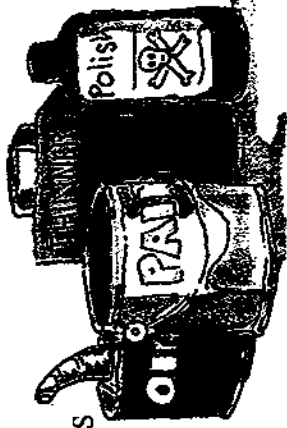
- Atherton (415) 321-0384
- Belmont (415) 594-8411 ext. 141
- East Palo Alto (415) 329-2598
- Ladera Area (415) 321-0384
- Los Altos (415) 329-2598
- Los Altos Hills (415) 329-2598
- Menlo Park (415) 321-0384
- Mountain View (415) 329-2598
- Palo Alto (415) 329-2598
- Portola Valley (415) 321-0384
- Redwood City (415) 594-8411 ext. 141
- San Carlos (415) 594-8411 ext. 141
- Sunnyvale (408) 730-7270
- Woodside (415) 321-0384

Dirty Words Every Kid Should Know.

Catch Basins—You know those Catch Basins on your street corner? Well, all that trash you see there gets washed down into the Catch Basins and eventually ends up at the beach. So, if you don't want to swim in garbage, don't toss things into the Catch Basins.



Toxins—Toxins are chemicals that can make you sick. Do you know why you can find them at the beach? Because some people break the law and wash Toxins into the Catch Basins. These Toxins end up at the beach in Storm Drains and Toxic Puddles. So look out.



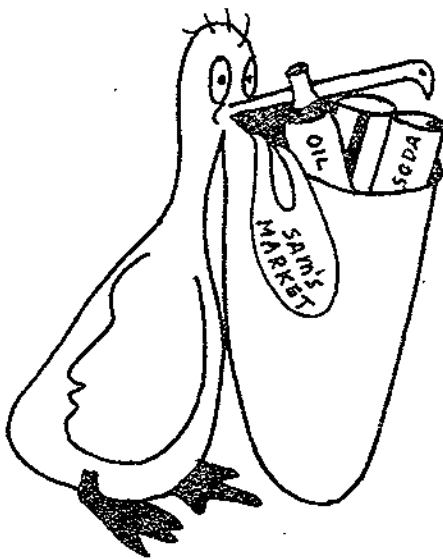
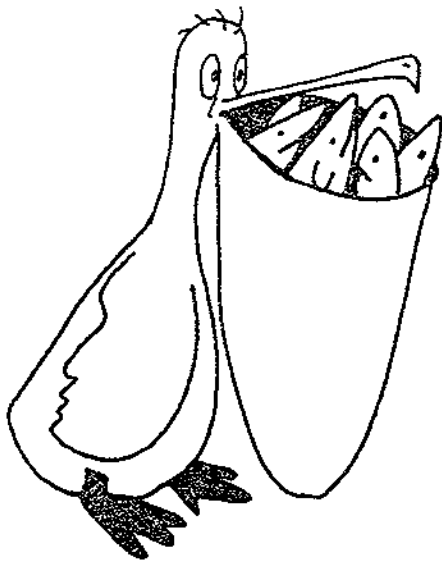
Runoff—After it rains, or people turn on their sprinklers or hoses, you can see water running into catch basins. There it mixes



Contamination—When something dirty, unhealthy or toxic gets in the ocean, the ocean becomes Contaminated. Unfortunate mistakes that happen when you

Urban runoff is all the stuff that enters the Bay with storm drain water. If the storm drains contain trash, leaves, and oil in them, then all that junk ends up in the bay. Preschoolers can do both the activities below.

Pelicans eat a lot. Which mouthful do you think the pelican would choose?



Circle the items that do not belong in our Bay water.

9/NTES © 1997

Mud 'N Fun is a regular feature in your Tidal Tales newsletters by Naturalist Randy Gates. Each month, one or more nature-related activities will be included for children and adults. These activities are designed to heighten your appreciation of the natural world. Adults and children can make these activities into family fun.

CITY OF MONTEREY STORM DRAIN STENCILING

City Contact Person:

Jennifer Hays
Public Works Engineering Division
City Hall- Room 7
(408) 646-3920

Storm Drain Stenciling Materials:

Each kit should contain:

3 traffic cones-	3 orange vests
latex gloves	2 buckets- one for carrying stuff, one for white paint
1 trash bag	paper towels
1 stir stick	1 can blue spray paint
1 scraper	1 wire brush
1 4" roller brush	1 paint brush
masking tape	1 stencil
catch basin map	Wet Paint signs
pencil	

Procedure for Obtaining Kits (team leaders):

1. Please call Jennifer Hays at 646-3920 in advance to request kits. Specify number of kits. Each kit is set up for two or three people. (In high traffic areas please have three people per team for traffic safety.)
2. Stop by City Hall to pick up kits. (Engineering Office is Room 7 above the City Council Chambers.)
3. When your group is done, please clean brushes and rollers (we do reuse the rollers) in a sink (not down a catch basin!)... Also, please try to clean the stencils as well as you can (they are pretty tough to clean off).
4. Return kits to Jennifer Hays at City Hall. Please have your volunteers keep track of which catch basins have been stenciled by marking them on the provided maps. If you find catch basins that are not marked on the maps (and they are on City property) go ahead and stencil them, but please mark on the map as well. We are trying to keep track of how many are getting done.

Stenciling Procedure:

1. Please wear orange vests at all times when stenciling. You will be working in traffic areas. Please place orange cones around the area that you are working. You should not have to close traffic lanes, but make yourself visible to cars that will be driving by.
2. You will be stenciling the concrete area on the curb above the catch basin grate. If there is no curb, either stencil on the concrete "apron" next to the catch basin or on a relatively flat asphalt area behind the grate where a curb would normally be.
3. Clean the area first with the wire brush provided. This will be to get the excess dirt off so that the paint will stick. If there is an old peeling stencil that you are going to paint over, use the scraper to get as much of the peeling paint off as possible.
4. Tape off the boundaries of the area to be painted with masking tape. You will be painting the white background first (with the roller brush provided and/or the paint brush). The white background should be painted about as long as the outer edges of the stencil (approximately 26") and as wide as the curb (6").
5. Put on your latex gloves. Make sure your white paint is stirred well (with your stir stick). Paint the area that you have taped. You can use either the roller or the paint brush (make sure it's not too thick or else it won't dry quickly).
6. After allowing the white paint to dry, have one person hold the plastic stencil in place over the white paint, and have another person use the blue can of spray paint to fill in the stencil. Be careful! This is the trickiest part. The stencil should be positioned so that someone standing in the street can read it right-side up. Make continuous passes with the spray paint approximately 6-8" above the stencil. Make sure everyone is wearing their gloves for this part! It can be very messy.
7. Please leave a "Wet Paint" taped to the curb next to the stencil. When you are done painting and the stencils are all dry please come back and remove them.
8. Go on to the next catch basin and repeat... When you are finished, please go back to all of your catch basins and retrieve "Wet Paint" signs and masking tape and dispose of properly.



Item Number PTNDDTSWBFSH



Item Number PTNDDTRWBFSH



Item Number PTNDDTBWBFSH



Item Number PTNDDTOWBFSH



Item Number PTNDFTBWBHEN

Pave Mark Corporation



Designed by Patrick Urquhart for San Mateo County