



2008

WATER CODE SECTION 13385

ENFORCEMENT REPORT

Published January 1, 2009



STATE WATER RESOURCES CONTROL BOARD
REGIONAL WATER QUALITY CONTROL BOARDS



ARNOLD SCHWARZENEGGER, GOVERNOR
STATE OF CALIFORNIA

LINDA S. ADAMS, SECRETARY
CALIFORNIA ENVIRONMENTAL PROTECTION AGENCY

STATE WATER RESOURCES CONTROL BOARD
WWW.WATERBOARDS.CA.GOV

TAM M. DODOC, CHAIR
GARY WOLFF, VICE-CHAIR
CHARLES R. HOPPIN, BOARD MEMBER
ARTHUR G. BAGGETT JR., BOARD MEMBER
FRANCES SPIVY-WEBER, BOARD MEMBER

DOROTHY RICE, EXECUTIVE DIRECTOR
TOM HOWARD, CHIEF DEPUTY DIRECTOR
JONATHAN BISHOP, CHIEF DEPUTY DIRECTOR

JANUARY 2009

Table of Contents

Executive Summary	7
I. Introduction	10
II. Violations of Waste Discharge Requirements	12
NPDES Wastewater	12
NPDES Stormwater	16
Compliance and Enforcement at Federal Facilities	19
III. Summary of Enforcement Actions Taken for Violations	20
NPDES Wastewater	20
NPDES Stormwater	22
IV. An Analysis of the Effectiveness of Current Policies, Including Mandatory Minimum Penalties (MMPs)	23
Mandatory Minimum Penalties (MMPs)	23
Analysis of the Effectiveness of Current Enforcement Policies	32
Update on Recent Enforcement Initiatives	35
V. Update on Previous Report Recommendations	37
VI. Recommendations and Actions for Future Reports	40
Appendix A: List of Regional Water Board Offices	41
Appendix B: Listing and Description of Violation Types Used in the CIWQS Data System	42
Appendix C: Types and Classification of Enforcement Actions	43
Appendix D: List of Facilities with Violations Subject to MMP Actions and Violations Receiving Penalties by Regional Board Office from 1-1-2000 through 12-15-2008	44
Appendix E: List of Federal Facilities with Violations 2000-2008	71
Appendix F: Summary of 2000-2008 Violations by Program, by Regional Board and by Violation Type	76

List of Figures

Figure 1: NPDES Wastewater MMP Violations 2000-2008	27
Figure 2: Distribution of Facilities by Number of MMP Violations	29
Figure 3: NPDES Wastewater MMP Effluent Violations 2000-2008 by Enforcement Type	30
Figure 4: NPDES Wastewater Late Report Serious Violations 2004-2008 with Level of Enforcement Received	31
Figure 5: Number of NPDES Wastewater Major Facilities 2000-2008. Compliance Rates	34

List of Tables

Table 1: NPDES Wastewater Permits by Category and Regional Office	12
Table 2: Number of Violations of NPDES Wastewater Permits 2000 to 2008	13
Table 3: Number of Violations per Wastewater Facility for 2008	14
Table 4: NPDES Wastewater Violations by Category for 2008	15
Table 5: NPDES Stormwater Permittees by Permit Type and Regional Office	17
Table 6: Number of Violations of NPDES Stormwater Permits 2000 to 2008	17
Table 7: NPDES Stormwater Violations by Category for 2008	18
Table 8: Federal Facilities Regulated Under the NPDES Program by Region	19
Table 9: NPDES Wastewater Violations Compared to Completed Enforcement Actions	20
Table 10: NPDES Stormwater Violations Compared to Completed Enforcement Actions	22
Table 11: Status of Violations Subject to MMPs from January 2000 to December 2008	26
Table 12: Status of Violations Subject to MMPs from January 2000 to December 2008	27
Table 13: Facilities with MMP Violations and Pending Enforcement Actions January 2000 to December 2008	28
Table 14: Selected Performance Measures NPDES Wastewater 2000-2008	32

Acronyms

ACL	Administrative Civil Liability
CAA	(State Water Pollution) Cleanup and Abatement Account
Cal EPA	California Environmental Protection Agency
CAFO	Concentrated Animal Feeding Operations
CAO	Cleanup and Abatement Order
CDO	Cease and Desist Order
CIWQS	California Integrated Water Quality System
CTR	California Toxics Rule
CWA	Clean Water Act
DA	District Attorney
EO	Executive Officer
LID	Low-Impact Development
MMP	Mandatory Minimum Penalties
MS4	Municipal Separate Storm Sewer System
NPDES	National Pollutant Discharge Elimination System
NPS	Non-Point Source
NOV	Notice of Violation
O&M	Operations & Maintenance
OE or Office	Office of Enforcement
PCS	Permit Compliance System
PY	Personnel Year
POTW	Publicly Owned Treatment Works
PUD	Public Utilities District
QA/QC	Quality Assurance/Quality Control
RCRA	(Federal) Resource, Conservation, and Recovery Act
SEP	Supplemental Environmental Project
SIC	Standard Industrial Classification
SIU	Special Investigations Unit
SMCRA	Surface Mining Control and Reclamation Act
SMR	Self-Monitoring Report
SSMP	Sewer System Management Plan

SSO.....Sanitary Sewer Overflow
TSO..... Time Schedule Order
US EPA..... U.S. Environmental Protection Agency
UST Underground Storage Tanks
Water Boards State and Regional Water Boards
WDR..... Waste Discharge Requirements
WQBEL Water Quality Based Limitation
WWTP Wastewater Treatment Plant

The Water Boards' mission is to preserve, enhance and restore the quality of California's water resources, and ensure their proper allocation and efficient use for the benefit of present and future generations.

Executive Summary

California Water Code, Chapter 5.5 implements provisions of the federal Water Pollution Control Act and establishes a regulatory program for discharges to surface water. This report summarizes information regarding violations of waste discharge requirements to surface waters pursuant to Water Code, Chapter 5.5, Section 13385(o), and enforcement actions taken by the State and Regional Water Quality Control Boards (Water Boards) in response to those violations.

California Water Code Section 13385(o)

The state board shall continuously report and update information on its Internet Web site, but at a minimum, annually on or before January 1, regarding its enforcement activities. The information shall include all of the following:

- (1) A compilation of the number of violations of waste discharge requirements in the previous calendar year, including stormwater enforcement violations.
- (2) A record of the formal and informal compliance and enforcement actions taken for each violation, including stormwater enforcement actions.
- (3) An analysis of the effectiveness of current enforcement policies, including mandatory minimum penalties.

Assembly Bill 729 (Simitian, 2006) established specific requirements for the posting of information related to rates of compliance, enforcement actions and the disposition of those actions, and imposition of administrative civil liability, as proposed to be imposed and as finally imposed, on the internet. This report displays the compliance rates for discharges regulated under California Water Code, Chapter 5.5. Section IV of this report describes where to access the information required by this legislation.

On September 2, 2008, the State Water Resources Control Board (State Water Board) adopted the Water Boards' [Strategic Plan 2008-2012](#)¹. One of the desired conditions identified in the plan is: "The Water Boards' and Board organizations are effective, efficient, innovative, responsive, and transparent". The Strategic plan also identifies specific goals and objectives related to the scope of this report:

Action 1.3.1. Reduce the backlog of facilities that are subject to mandatory minimum penalties by 50 percent by December 2009.

Action 1.3.4. The State Water Board will adopt by December 2008 an updated Water Quality Enforcement Policy that includes factors for ranking enforcement priorities, metrics to measure enforcement effectiveness, and processes whereby the State Water Board will exercise its water quality enforcement authority.

¹ Available at: http://www.waterboards.ca.gov/water_issues/hot_topics/strategic_plan/2007update.shtml

Action 6.1.1. Adopt and implement by December 2008 revisions to the Water Quality Enforcement Policy to, at a minimum, ensure consistent enforcement response, assessment of penalties for all Class 1 violations, and assessment of liability in excess of the economic gain obtained as a result of non-compliance. The policy will also establish a clear, consistent statewide approach to the prioritization of enforcement targets, based on threats and adverse impacts to beneficial uses, including the identification of Class 1 violations.

The Water Boards are achieving significant progress in addressing the most important compliance problems and have significantly improved the quality of the data and information that is used to manage and evaluate the enforcement program.

More complete information is now available to the Water Boards' staff and managers and the public. It is the intent of the Water Boards to continue this effort to improve the transparency and accountability of the Water Boards' programs.

Major findings include:

- (1) The Water Boards regulate more than 2,000 National Pollutant Discharge Elimination System (NPDES) wastewater permittees, and nearly 30,000 stormwater permittees statewide.
- (2) The total number of violations at NPDES wastewater facilities and the number of effluent violations has fluctuated since 2000 with no overall trends up or down.
- (3) The total number of facilities with compliance problems also fluctuate over time although data indicates that this number is decreasing.
- (4) Compliance rates for major NPDES dischargers are improving over time. Although it appears that chronic noncompliance is consistent for those major facilities with compliance problems, the number of NPDES wastewater major facilities with more than 25 violations per year has decreased significantly.
- (5) The percentage of violations with a completed enforcement action has been maintained at a similar rate for the last 4 years although there is significant variability among the Regional Water Boards.
- (6) The backlog of violations subject to mandatory minimum penalties (MMP) identified in previous reports was targeted for reduction in 2008 and substantial progress has been made which addresses virtually all of the violations from the previous years.
- (7) The transition to a new data system in mid-2005 has continued to affect the collection and reporting of data on violations and enforcement actions. However, recent changes in data collection and data reporting have resulted in significant improvements to the database.

The Water Boards use the [California Integrated Water Quality System](#) (CIWQS) database to track violations and the resulting enforcement actions. The CIWQS database contains information on violations and enforcement actions that have occurred since July 1, 1999.

Most of the tables in this report are available for continuous public use through the State Water Board's Internet site. Use of live, [public reports](#) allows the public access to

violation and enforcement data from all dischargers regulated by the Water Boards, and gives the user control over how to sort and filter this data to meet specific information needs. These public reports can be found on the Water Board's Web site at: http://www.waterboards.ca.gov/water_issues/programs/ciwqs/publicreports.shtml.

This report is also available electronically at the Water Board's Web site at <http://www.waterboards.ca.gov> .

I. Introduction

This report addresses violations of Waste Discharge Requirements (WDRs) for discharges to surface water. Discharges to surface water are issued a combined WDR/NPDES permit.

The [NPDES Permit Program](#) controls water pollution by regulating point sources that discharge pollutants into waters of the United States. Point sources are discrete conveyances such as pipes or man-made ditches. Typical point source discharges include discharges from: municipalities or publicly owned treatment works (POTWs), industrial facilities, and urban areas regulated under the Storm Water Program. The NPDES program is delegated to the State Water Board in accordance with the United States Environmental Protection Agency's approval, and is implemented through Chapter 5.5 of the California Water Code.

The State and Regional Water Boards administer the NPDES program. The nine Regional Water Boards lie within different watersheds and are as follows (see [Appendix A](#) for map and details):

- Region 1 – [North Coast Regional Water Board](#)
- Region 2 – [San Francisco Bay Regional Water Board](#)
- Region 3 – [Central Coast Regional Water Board](#)
- Region 4 – [Los Angeles Regional Water Board](#)
- Region 5 – [Central Valley Regional Water Board](#) (With Offices in Redding [5R], Sacramento [5S] and Fresno [5F])
- Region 6 – [Lahontan Regional Water Board](#) (With offices in South Lake Tahoe [6A] and Victorville [6B])
- Region 7 – [Colorado River Basin Regional Water Board](#)
- Region 8 – [Santa Ana Regional Water Board](#)
- Region 9 – [San Diego Regional Water Board](#)

As required by statute, this report addresses violations and enforcement actions for calendar year 2008. Also, historical information for prior years is included for comparison purposes.

The reporting date imposed by the statute, January 1, however, does not allow for complete reporting of enforcement data for the prior calendar year. Self-monitoring reports are typically due to the Regional Water Boards 30 to 45 days after the end of the month for which the monitoring was performed. This allows time for laboratory analysis and data transmittal. As a result, Regional Water Board staff is not routinely aware of violations until several months after they occur. Staff must review the reports, identify the violations and manually enter the information into the data system. Most effluent violations are detected through a review of self-monitoring reports.

As noted, it may be several months or more before violations are noted and enforcement actions taken. The data in this report will continue to change as violations which occurred in the target calendar year are identified, action is taken and the enforcement module in the database is updated to reflect these actions. For example,

in a report issued in August 2006 for data covering 2005, the Regional Water Boards reported that only 14% of certain violations had resulted in an enforcement action. Data now indicate that 64% of these violations have resulted in an enforcement action. In many cases where a major enforcement action is warranted, it could be some time before a specific violation is linked in the database to a specific enforcement action.

Data for this report was initially extracted from the CIWQS database on December 15, 2008. The data will be updated quarterly to include final quarter data for 2008 and to reflect substantial ongoing data cleanup efforts by the Regional Water Boards.

II. Violations of Waste Discharge Requirements

This section presents a compilation of the number of violations of waste discharge requirements in the previous year.

NPDES Wastewater

Wastewater facilities discussed in this report are those facilities that are permitted to discharge pollutants to surface waters and include sewage treatment plants, food processors, oil refineries, power plant cooling waters, pulp and paper mills, mining operations, fish hatcheries, etc. During this reporting period, there were 2,069 active wastewater facilities regulated by [NPDES](#) waste discharge requirements in California. These facilities are divided into two categories:

- Major facilities – Facilities with an average daily discharge greater than 1 million gallons per day or those that pose a high degree of threat to water quality;
- Minor facilities – Facilities with an average daily flow less than 1 million gallons per day and that have a lower threat to water quality.

The waste discharge requirements (“NPDES permits” or “permits”) are issued as individual permits or as general permits. Dischargers eligible for coverage under a general permit must enroll and agree to comply with the conditions of the general permit.

A summary of active NPDES facilities by category and Regional Water Board is shown in Table 1.

Table 1: NPDES Wastewater Permits by Category and Regional Office

Regional Office	MAJOR FACILITIES	MINOR FACILITIES			Total
	INDIVIDUAL Permits	GENERAL Permit Enrollees	INDIVIDUAL Permits	Total Minor	
1	14	21	32	53	67
2	56	199	18	217	273
3	22	71	20	91	113
4	45	499	77	576	621
5F	7	19	26	45	52
5R	13	17	54	71	84
5S	38	134	58	192	230
Total Region 5	58	170	138	308	366
6A	1	10	4	14	15
6B	1	7	6	13	14
Total Region 6	2	17	10	27	29
7	8	38	17	55	63
8	19	366	18	384	403
9	37	74	23	97	134
Total	261	1,455	353	1,808	2,069

Table 2 lists the total number of violations of NPDES permits by Regional Water Board office for each of the past nine years. The table shows a generally consistent number of violations statewide although this does not track for all of the Regional Water Board offices. The increase in the number of violations from the year 2003 is in part explained by increased diligence in recording violations, particularly mandatory minimum penalty violations. As noted elsewhere in this report, deployment of the CIWQS database in mid-2005 resulted in a drop in data entry, though some Regional Water Boards maintained consistency in data entry.

Table 2: Number of Violations of NPDES Wastewater Permits 2000 to 2008

Violations of NPDES Waste Discharge Requirements									
Regional Office	2000	2001	2002	2003	2004	2005	2006	2007	2008
1	918	613	415	434	627	395	312	186	273
2	496	510	310	268	277	269	354	215	155
3	350	387	305	214	414	409	430	478	99
4	2,175	2,505	2,621	3,007	2,706	2,307	3,142	2,865	959
5F	246	229	526	489	458	320	331	440	130
5R	226	94	102	74	79	128	147	86	41
5S	1,037	768	955	892	1,585	2,285	2,255	1,870	1,232
Total Region 5	1,509	1,091	1,583	1,455	2,122	2,733	2,733	2,396	1,403
6A	10	11	22	11	9	5	1	6	7
6B	5	10	21	25	22	14	129	43	21
Total Region 6	15	21	43	36	31	19	130	49	28
7	138	201	210	328	173	193	275	308	208
8	451	300	194	109	216	236	162	115	57
9	557	221	160	255	616	138	168	320	126
Total	6,609	5,849	5,841	6,106	7,182	6,699	7,706	6,932	3,308

A comparison of the number of violations reported by Regional Water Boards and the number of facilities regulated by that Regional Water Board is provided in Table 3. A comparison of the average number of violations per facility in violation assists in recognizing the regions or facilities that have above-average and below-average compliance rates.

Table 3: Number of Violations per Wastewater Facility for 2008

Number of Facilities Compared to Number of NPDES Violations Calendar Year 2008					
Regional Office	NPDES Facilities	Facilities With 1-25 violations during 2008	Facilities with more than 25 violations during 2008	Total Violations	Violations per facility in violation
1	67	21	3	273	11.38
2	273	52	0	155	2.98
3	113	45	1	99	2.15
4	621	221	21	959	3.96
5F	52	17	2	130	6.84
5R	84	24	0	41	1.71
5S	230	48	13	1,232	20.20
6A	15	3	0	7	2.33
6B	14	4	0	21	5.25
7	63	18	3	208	9.90
8	403	34	1	57	1.63
9	134	12	3	126	8.40
Total	2,069	499	47	3,308	Average: 6.05

The data above indicate an uneven distribution of the average number of violations per facility among the different Regional Water Board offices. The reasons for this variability include differences in facility-specific requirements, differences in Regional Water Board office processes, the priority assigned to report review and data entry, and the differences in rates of compliance among dischargers. As noted, the data for 2008 is incomplete because not all monitoring reports for 2008 have been received and reviewed, and not all violations have been recorded by staff. Variability due to report review and data entry should be reduced with electronic report submittal procedures being implemented through our improved data system. Recent efforts to standardize permit terms will reduce the differences in facility-specific requirements over the next few years as permits are renewed.

A breakdown of the violation types and the number of violations identified as priority violations is presented in Table 4. A more detailed description of each violation category is provided in [Appendix B](#). Violations vary from not submitting monitoring reports on time to acute toxicity violations. The Water Boards identify priority violations based on criteria identified in the [Water Quality Enforcement Policy](#)². A priority violation represents a greater threat to water quality than other violations. Forty six percent of NPDES wastewater violations have been identified as priority violations.

It is important to note that the term “priority” violation used in this context is different than “serious” violations discussed in the following section on mandatory minimum penalties. The term “serious” violation is defined in sections 13385(h) and 13385.1 of

² Resolution No. 2002-0040 <http://www.waterboards.ca.gov/plnspols/docs/wqep.doc>

the California Water Code. All “serious” violations are considered priority violations, but not all priority violations are “serious” violations.

Table 4: NPDES Wastewater Violations by Category for 2008

Breakdown of the Number of NPDES Violations by Category for 2008					
Description of Violation Category (See Appendix B)	Total Violations		Priority Violations		
	Number	%	Number	% of Total Priority	% of Total Violations
Category 1 Pollutant	1,092	33%	414	27%	12%
Reporting	1,086	33%	684	44%	21%
Effluent	397	12%	94	6%	3%
Category 2 Pollutant	369	11%	303	20%	9%
Other Requirement	91	3%	6	0%	0%
Monitoring	76	2%	9	1%	0%
Violation of Non-Effluent Permit Condition	54	2%	18	1%	1%
Acute Toxicity	27	1%	-	0%	0%
Receiving Water	26	1%	4	0%	0%
Sanitary Sewer Overflow	26	1%	4	0%	0%
Chronic Toxicity	26	1%	4	0%	0%
Unauthorized Discharge	16	0%	-	0%	0%
Failure to Obtain Permit	9	0%	-	0%	0%
Total	3,320		1,540		46%

[Appendix F](#) provides a detailed compilation of violations by program, by violation type and by regional board office for the years 2000 to 2008.

NPDES Stormwater

The [Stormwater Program](#) has five categories of dischargers subject to the federal Stormwater permit requirements. At the time of this report, nearly 30,000 facilities or permittees are regulated by NPDES stormwater permits in California. Below is a brief description of the five categories:

- **Industrial Activities** – The Industrial Storm Water General Permit Order 97-03-DWQ ([General Industrial Permit](#)) is an NPDES permit that regulates discharges associated with 10 broad categories of industrial activities other than construction. In general, discharges from manufacturing, transportation, and recycling facilities are subject to this permit.
- **Construction Activities** – Dischargers whose projects disturb one or more acres of soil or are part of a larger common plan of development or sale are required to obtain coverage under the General Permit for Discharges of Storm Water Associated with Construction Activity ([Construction General Permit - CGP - Order No. 99-08-DWQ](#)). Construction activity subject to this permit includes clearing, grading and disturbances to the ground such as stockpiling, or excavation, but does not include regular maintenance activities performed to restore the original line, grade or capacity of the facility. Typical CGP permit coverage lasts about 1 year, so this permit program sees a lot of turnover. Because construction activities are temporary and the most prevalent pollutant problem is sediment discharges, the State Water Board has adopted this permit separate from the General Industrial Permit, similar to the approach taken by US EPA.
- **Linear Stormwater Facilities** –Underground/Overhead Projects disturbing at least 1 acre but less than 5 acres (including trenching and staging areas) are covered by the Statewide General Permit for Storm Water Discharges Associated with Construction Activity from Small Linear Underground/Overhead Projects ([Small LUP General Permit](#))
- **Municipal Stormwater Phase I Facilities** – The Municipal Storm Water Permits regulate storm water discharges from municipal separate storm sewer systems (MS4s). Under [Phase I](#), which began in 1990, the Regional Water Boards have issued NPDES MS4 permits to permittees serving populations greater than 100,000 people. Many of these permits are issued to a group of co-permittees encompassing an entire metropolitan area.
- **Municipal Stormwater Phase II Facilities** – Under [Phase II](#), the State Water Board adopted a General Permit for the Discharge of Storm Water from Small MS4s (WQ Order No. 2003-0005-DWQ) to provide permit coverage for smaller municipalities (10,000 to 100,000 people), including non-traditional small MS4s which are governmental facilities such as military bases, public campuses, prisons and hospital complexes.

Stormwater permits are generally issued as individual permits to the Phase 1 MS4s and as general permits to the other categories. Dischargers eligible for coverage under a general permit must enroll and agree to comply with the conditions of the general permit.

A summary of active NPDES stormwater facilities by category and Regional Water Board is shown in Table 5.

Table 5: NPDES Stormwater Permittees by Permit Type and Regional Office

Regional Office	Construction	Industrial	Linear	Municipal Phase I**	Municipal Phase II**	Total
1	474	363	1	3	11	852
2	1,972	1,431	15	75	26	3,519
3	924	406	4	1	15	1,350
4	3,052	2,993	11	98	-	6,154
5F	1,375	570	6	7	8	1,966
5R	472	194	3	-	3	672
5S	3,183	1,197	13	12	40	4,445
Total Region 5	5,030	1,961	22	19	51	7,083
6A	303	61	3	3	2	372
6B	935	175	4	-	4	1,118
Total Region 6	1,238	236	7	3	6	1,490
7	705	167	2	13	-	887
8	3,915	1,595	9	55	-	5,574
9	2,542	762	12	38	0	3,354
Total	19,852	9,914	83	305	109	30,263

Table 6 lists the number of violations of NPDES stormwater permits by Regional Water Board office for the past nine years.

Table 6: Number of Violations of NPDES Stormwater Permits 2000 to 2008

Violations of NPDES Stormwater Waste Discharge Requirements									
Regional Office	2000	2001	2002	2003	2004	2005	2006	2007	2008
1	70	63	52	89	13	4	5	100	100
2	139	18	104	65	5	8	7	294	238
3	19	29	96	30	202	456	62	60	61
4	230	1,197	1,145	728	521	280	225	143	216
5F	13	5	6	9	105	309	248	13	164
5R	65	25	128	28	153	50	83	74	66
5S	185	45	57	208	386	480	544	377	349
Total Region 5	263	75	191	245	644	839	875	464	579
6A	24	32	72	51	78	42	84	22	14
6B	46	74	15	1	-	2	9	10	27
Total Region 6	70	106	87	52	78	44	93	32	41
7	52	11	21	-	50	2	1	43	-
8	553	741	390	266	295	497	315	450	327
9	166	300	602	405	389	163	149	203	183
Total	1,562	2,540	2,688	1,880	2,197	2,293	1,732	1,789	1,745

A breakdown of the storm water violations by violation type is shown in Table 7. Approximately, 17 percent of NPDES stormwater violations have been identified as priority violations.

Table 7: NPDES Stormwater Violations by Category for 2008

Breakdown of the Number of NPDES Stormwater Violations by Category for 2007					
Description of Violation Category (See Appendix B)	Total Violations		Priority Violations		
	Number	%	Number	% of Total Priority	% of Total Violations
Reporting	1,045	60%	221	73%	13%
BMP	336	19%	24	8%	1%
SWPPP	108	6%	6	2%	0%
Other Requirement	91	5%	3	1%	0%
Violation of Non-Effluent Permit Condition	64	4%	21	7%	1%
Unauthorized Discharge	32	2%	8	3%	0%
Monitoring	22	1%	2	1%	0%
Failure to Obtain Permit	13	1%	8	3%	0%
Failure to Pay Fees	7	0%	-	0%	0%
Unregulated Discharge	7	0%	0	0%	0%
Effluent	5	0%	4	1%	0%
Sanitary Sewer Overflow	5	0%		0%	0%
Basin Plan Prohibition	5	0%	1	0%	0%
Enforcement Action	3	0%	3	1%	0%
CAT2	2	0%	2	1%	0%
File		0%		0%	0%
Total	1,745		303		17%

Most of the violations documented in the stormwater program are reporting violations. Most violations, other than reporting, in the stormwater program are discovered through site inspections. Because ensuring compliance with stormwater NPDES permit requirements for the nearly 30,000 permitted stormwater activities requires a large field presence, most violations are related to the submission of the annual reports.

Compliance and Enforcement at Federal Facilities

Federal facilities include facilities owned or operated by the federal government. These include national parks, Department of Energy facilities, Department of Defense (DOD) facilities, etc.

DOD facilities fall under one of the following three categories:

- Active bases where the military currently conducts operations,
- Base Realignment and Closure (BRAC) installations which are being cleaned up and prepared for transfer to communities and to other federal, state, and local agencies, and
- Formerly Used Defense Sites (FUDS) which are properties that DOD once owned, operated or leased.

Table 8: Federal Facilities Regulated Under the NPDES Program by Region

Regional Office	Federal Facilities Regulated Under the NPDES Construction Stormwater Program	Federal Facilities Regulated Under the NPDES Industrial Stormwater Program	Federal Facilities Regulated Under the NPDES Wastewater Program	Total Number of Federal Facilities
1	8	0	2	10
2	52	27	4	83
3	24	8	0	32
4	28	22	8	58
5F	19	4	2	25
5R	10	1	3	14
5S	46	9	9	64
6A	9	1	0	10
6B	18	4	0	22
7	24	3	5	32
8	18	10	6	34
9	72	18	9	99
TOTAL	328	107	48	483

CIWQS database information about federal facilities is inconsistent because the Water Boards have found it difficult to prevail in enforcement against federal facilities. Consequently, Regional Water Board entry of violations at these facilities has declined. For example, San Diego Regional Water Board initially entered all identified violations at federal facilities into the database. The San Diego Regional Water Board discontinued comprehensive recording of federal facility violations because of the limitations on enforcement. The recording of all violations at federal facilities will be a Water Board priority for 2009.

[Appendix E](#) includes a detailed list of the federal facilities with violations by year since 2000. The Water Boards will ensure violations at federal facility are properly documented with the upcoming reporting cycle.

III. Summary of Enforcement Actions Taken for Violations

This section presents information on formal and informal compliance and enforcement actions taken for each violation.

NPDES Wastewater

Enforcement actions taken in response to violations include both informal and formal actions. An informal enforcement action is any enforcement action taken by Water Board staff that is not defined in statute, such as staff letters and notices of violation. Formal enforcement actions are statutorily recognized actions to address a violation or threatened violation such as Cleanup and Abatement Orders. [Appendix C](#) describes the enforcement options used by the Water Boards.

Table 9: NPDES Wastewater Violations Compared to Completed Enforcement Actions

NPDES Wastewater Violations Compared to Completed Enforcement Actions												
Calendar Year	2005			2006			2007			2008		
Regional Office	Total Violations	With Enforcement	% With Enforcement	Total Violations	With Enforcement	% With Enforcement	Total Violations	With Enforcement	% With Enforcement	Total Violations	With Enforcement	% With Enforcement
1	395	253	64%	312	221	71%	186	97	52%	273	42	15%
2	269	169	63%	354	170	48%	215	98	46%	155	31	20%
3	409	258	63%	430	135	31%	478	171	36%	99	16	16%
4	2,307	913	40%	3,142	1,513	48%	2,865	1,141	40%	959	393	41%
5F	320	186	58%	331	117	35%	440	137	31%	130	57	44%
5R	128	107	84%	147	121	82%	86	83	97%	41	38	93%
5S	2,285	1,924	84%	2,255	2,035	90%	1,870	1,777	95%	1,232	997	81%
6A	5	3	60%	1	1	100%	6	1	17%	7	2	29%
6B	14	10	71%	129	117	91%	43	23	53%	21	15	71%
7	193	175	91%	275	272	99%	308	303	98%	208	205	99%
8	236	148	63%	162	95	59%	115	93	81%	57	19	33%
9	138	108	78%	168	154	92%	320	218	68%	126	75	60%
Total	6,699	4,254	64%	7,706	4,951	64%	6,932	4,142	60%	3,308	1,890	57%

GREEN	More than 90% of violations with completed enforcement
YELLOW	Between 80% and 90% of violations with completed enforcement
RED	Less than 80% of violations with completed enforcement

Table 9 shows the number of violations recorded from 2005 to 2008. It also lists the number of violations for which there is a completed enforcement action entered in CIWQS (enforcement is still pending for some, but not all, of these violations). The percentages at the bottom of the table show each violation category as a percentage of the total number of violations and the percentage of violations linked to an enforcement action. While the Water Boards' enforcement authorities are significant, resource levels generally preclude enforcement against every violation. The appropriate level of enforcement response is described in the Water Board's [enforcement policy](#).

As noted, there can be a significant lag in the time between the discovery and reporting of a violation, and the resulting enforcement action. This is due to available staffing and the time it takes to pursue enforcement, particularly for complex enforcement cases. Also, minor violations may be resolved before enforcement is taken. As a result, the percentage of violations where enforcement has been taken is lower for more recent violations, and tends to increase as time goes by and additional actions are taken for past violations. The data for 2008 will likely change significantly since not all violations have yet been recorded for 2008.

NPDES Stormwater

Table 10 shows the number of stormwater violations for the last four years. It also lists the number of stormwater violations addressed by enforcement actions. The percentages at the bottom of the table show each violation category as a percent of the total number of violations.

Table 10: NPDES Stormwater Violations Compared to Completed Enforcement Actions

NPDES Stormwater Violations Compared to Completed Enforcement Actions												
Calendar Year	2005			2006			2007			2008		
Regional Office	Total Violations	With Enforcement	% With Enforcement	Total Violations	With Enforcement	% With Enforcement	Total Violations	With Enforcement	% With Enforcement	Total Violations	With Enforcement	% With Enforcement
1	4	-	0%	5	5	100%	100	74	74%	100	92	92%
2	8	4	50%	7	6	86%	294	288	98%	238	232	97%
3	456	453	99%	62	60	97%	60	55	92%	61	53	87%
4	280	266	95%	225	204	91%	143	135	94%	216	215	100%
5F	309	295	95%	248	245	99%	13	12	92%	164	148	90%
5R	50	47	94%	83	82	99%	74	72	97%	66	64	97%
5S	480	471	98%	544	533	98%	377	361	96%	349	338	97%
6A	42	18	43%	84	64	76%	22	7	32%	14	8	57%
6B	2	1	50%	9	-	0%	10	8	80%	27	12	44%
7	2	2	100%	1	1	100%	43	42	98%	-	-	
8	497	447	90%	315	266	84%	450	421	94%	327	313	96%
9	163	133	82%	149	114	77%	203	181	89%	183	167	91%
Total	2,293	2,137	93%	1,732	1,580	91%	1,789	1,656	93%	1,745	1,642	94%

Table 10 shows a very high enforcement response rate, much higher than in Table 9 for wastewater reporting. This is due in part to the fact that these violations are often entered into the database at the same time the enforcement action is entered into the database.

IV. An Analysis of the Effectiveness of Current Policies, Including Mandatory Minimum Penalties (MMPs)

The Water Boards have continued the re-organizing of staff to separate enforcement personnel from permitting personnel during 2008 (see [Strategic Plan Action 6.1.3](#)). With the recent establishment of a dedicated enforcement unit at the San Francisco Bay Regional Water Board, all regional water boards now have dedicated staff to conduct many of the compliance and enforcement activities. Maintaining dedicated enforcement units at each regional water board is a continued priority for the Water Boards for the increased effectiveness of the enforcement program.

Mandatory Minimum Penalties (MMPs)

California Water Code section [13385](#) requires MMPs for specified violations of NPDES permits. For violations that are subject to those MMPs, the Water Board must either assess an Administrative Civil Liability (ACL) for the minimum penalty or assess an ACL for a greater amount. California Water Code section 13385(h) requires an MMP of \$3,000 for each “serious” violation. A serious violation is defined as any waste discharge that exceeds the effluent limitation for a Group I pollutant by 40 percent or more, a Group II pollutant by 20 percent or more, or failure to file a discharge monitoring report for each 30 days the report is late. It is important to note that all serious violations are considered to be priority violations.

The Water Boards are also required by California Water Code section 13385(i) to assess MMPs of \$3,000 for multiple chronic violations. This penalty applies when the discharger does any of the following four or more times in any period of six consecutive months:

- 1) Violates effluent limitations;
- 2) Fails to file a report of waste discharge pursuant to California Water Code section 13260;
- 3) Files an incomplete report of waste discharge pursuant to California Water Code section 13260; or
- 4) Violates a toxicity effluent limitation where the WDR does not contain pollutant-specific effluent limitations for toxic pollutants.

California Water Code section 13385(j) includes several limited exceptions to the mandatory minimum penalty provisions. The primary exceptions are for discharges that are in compliance with a cease and desist order or a time schedule order under narrowly specified conditions. California Water Code section 13385(k) provides an alternative to assessing MMPs against a publicly owned treatment works (POTW) that serves a small community with a financial hardship. This is because it was recognized that the per capita cost of treatment and compliance is often higher for these communities. Under this alternative, the Water Boards may require the POTW to spend an amount equivalent to the mandatory minimum penalty toward a compliance project that is designed to correct the violations.

California Water Code section 13385.1, effective January 1, 2004, defines the term “effluent limitation” and expands the definition of a “serious violation” in California Water

Code section 13385(h) to include failure to file a discharge monitoring report for each 30 days it is late. Section 13385.1 also re-defines MMPs as applicable only to permits containing effluent limitations in which the location of the discharge is specified.

[AB495](#) (Montanez) (Stats. 2005, ch. 145 (A.B.495), § 1) amended California Water Code section 13385.1, effective January 1, 2006, to remove the requirement for the discharge location to be specified in the WDRs.

Wastewater dischargers regulated under the NPDES wastewater program and the NPDES stormwater program are subject to the mandatory minimum penalties if the location is specified in waste discharge requirements for violations occurring from January 1, 2000 to December 31, 2005. Most general NPDES permits, including stormwater NPDES permits, do not specify the location³ of discharge and are therefore not subject to MMPs for effluent or reporting violations occurring from January 1, 2000 to December 31, 2005 but they are included in the report for violations occurring from January 1, 2006 forward.

2008 Statewide Initiative for MMP Enforcement

In the [2007 Water Boards Enforcement Report](#) [per California Water Code section 13385(o)], the data indicated that 7,880 MMP violations (from January 1, 2000 to December 31, 2007) had not received a penalty at or above the required minimum.

In February, 2008, the Office of Enforcement (OE) began examining the large number of violations subject to mandatory minimum penalties in CIWQS dating back to January 1, 2000 that had not yet received a formal enforcement action. After discussing the possible ways to efficiently address these outstanding violations, the Water Boards implemented a Statewide Initiative for MMP Enforcement (Initiative).

The Initiative's goal was to substantially reduce the MMP enforcement backlog by December 31, 2008. Violations occurring on or before December 31, 2007 (beginning with January 1, 2000) were considered "backlogged" violations for the purposes of the Initiative, although certain Regional Boards chose to bring MMP enforcement up-to-date. The reduction of the backlog used a phased approach of first resolving uncontested MMP violations with limited staff time by sending letters to facilities with alleged MMPs and offering them the opportunity to [resolve](#) their violation(s) by acknowledging them, and providing full payment of any accrued mandatory penalties. Based on the response to this initial correspondence by facilities subject to the MMPs, the Water Boards would then sequence, and process the remaining non-responsive and/or contesting facilities for MMP enforcement hearings.

The Initiative also intended to validate information in CIWQS regarding MMP violations to ensure that the database accurately reflected MMP violations and the actions that

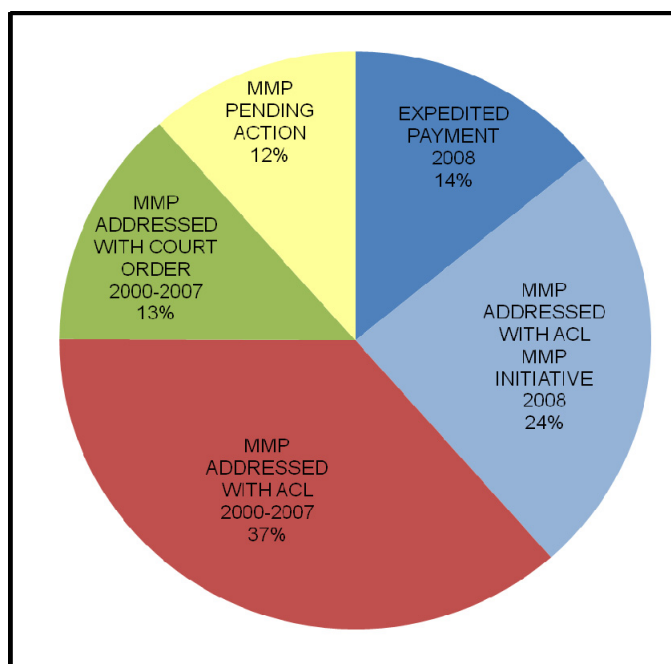
³ The location of the discharge for an enrollee under a general permit is specified in the Notice of Intent or Request of Waste Discharge application submitted to the Water Boards and may also be typically included in the enrolment letter and in the specific monitoring and reporting programs. Since those documents are not clearly incorporated in the permit, the location is not specified in waste discharge requirements for general permit enrollees.

had been taken to address them. As the first step of the Initiative, State Board and Regional Board staff began reviewing the data in CIWQS which would be used to generate notices of violations for the existing MMP enforcement backlog. Efforts to review and validate data in CIWQS began on March 7, 2008. Once this information was obtained, the State and Regional Boards launched a 1 month “cleanup period” to address any CIWQS data problems, complete additional data entry, and correct any known errors.

The data updating process continued as a coordinated and concerted effort of Regional Board and State Board staff until data for all facilities with MMPs had been internally validated to ensure that accurate notification letters would be sent. Once violation information had been reviewed and validated, the Regional Board and State Board staff issued notices of violations and/or offers to dischargers (Expedited Payment Letters) to resolve their outstanding violation(s). Facilities were addressed on a flow basis beginning in July 2008, as CIWQS data was validated for each facility, and continued on an ongoing basis.

Throughout the Initiative, State and Regional Board staff worked together to eliminate or significantly reduce the MMP backlog. State Board staff provided ongoing assistance to Regional Board staff with the implementation of this Initiative. The Initiative was implemented in a dynamic way such that issues and solutions that arose in one region are shared with a state-wide Coordinating Committee.

As of December 12, 2008, the backlog of MMP violations without enforcement actions had been substantially reduced. Several regional boards have addressed all outstanding violations in their jurisdiction, and the remaining regional boards are nearly finished. As a result of the MMP initiative, the State Board and Regional Boards have addressed approximately 8,895 violations from 364 facilities statewide. The Initiative has also resulted in a more accurate and complete recording of violations. The State Water Board’s Office of Enforcement has tracked progress towards resolving the covered MMP violations and a special report on the Initiative will be prepared in early 2009. The report will include a description of challenges encountered in implementing the Initiative, lessons learned and any recommendations for improving the MMP statutes and for improving the Water Boards’ implementation of the MMP requirements.



Summary of MMP Violations and MMP Enforcement Actions

According to the CIWQS database, 23,097 MMP violations occurred between January 1, 2000 and December 31, 2008. Of these, 17,170 (74 percent) are recorded as having received a minimum or greater penalty. Some portion of the reported effluent violations may qualify for statutory exemptions.

Table 11 shows the number of violations that have been identified by each Regional Water Board office by violation type. [Appendix D](#) provides a list of every facility with violations subject to mandatory minimum penalties.

Table 11: Status of Violations Subject to MMPs from January 2000 to December 2008

Violations Subject to MMPs - January 2000 to December 2008				
Regional Office	Effluent Chronic MMP Violations	Effluent Serious MMP Violations	Late Report Serious MMP Violations	Total MMP Violations
1	853	504	36	1,393
2	930	845	-	1,775
3	553	250	2	805
4	4,151	2,965	1,680	8,796
5F	697	226	59	982
5R	118	49	1	168
5S	2,893	1,886	1,314	6,093
6A	5	1	-	6
6B	129	12	-	141
7	665	396	-	1,061
8	899	133	3	1,035
9	479	363	-	842
TOTAL	12,372	7,630	3,095	23,097

Figure 1 shows MMP violations since 2000 by violation type. We see a variation through the years. There is significant increase in the count of violations in 2006 due to the greater emphasis on documentation of serious violations for late reports, especially within the Los Angeles Regional Water Board as a result of implementation of the statewide initiative for MMP enforcement. MMPs for late reports began in 2004 with the addition of section 13385.1.

Figure 1: NPDES Wastewater MMP Violations 2000-2008

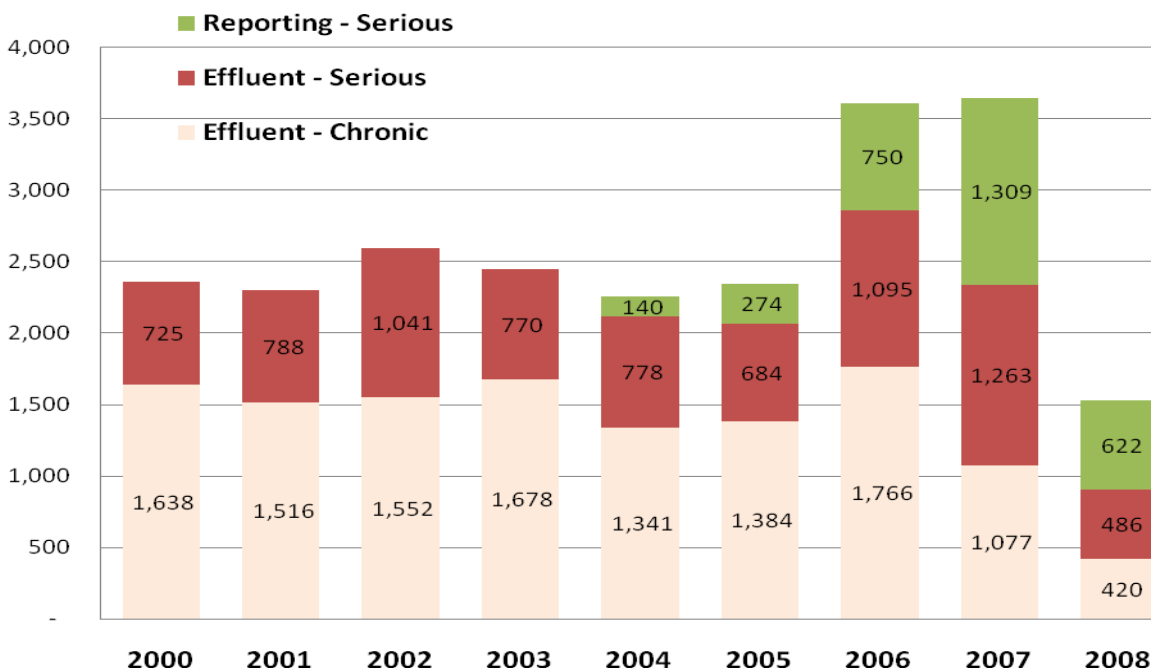


Table 12 shows the number of violations that are being addressed through the enforcement process by Regional Water Board office.

Table 12: Status of Violations Subject to MMPs from January 2000 to December 2008

Violations Subject to MMPs - January 2000 to December 2008						
Regional Office	Total MMP Violations	MMPs Addressed with Administrative Civil Liability(1)	MMPs Resolved with Court Order	MMPs Addressed with Expedited Payment Offer(2)	Violations Without Completed MMP Enforcement	% Without
1	1,393	1,146	-	5	242	17%
2	1,775	1,372	-	38	365	21%
3	805	606	22	77	100	12%
4	8,796	1,546	3,040	2,856	1,354	15%
5F	982	692	-	287	3	0%
5R	168	166	-	-	2	1%
5S	6,093	5,868	7	-	218	4%
6A	6	-	-	-	6	100%
6B	141	80	-	-	61	43%
7	1,061	859	-	-	202	19%
8	1,035	925	-	-	110	11%
9	842	813	28	-	1	0%
TOTAL	23,097	14,073	3,097	3,263	2,664	12%

- (1) MMP Addressed with ACL" which includes both pending ACL activities triggered by a complaint and completed ACL activities resolved with an ACL order or settlement.
- (2) Expedited payment offer issued under the 2008 MMP initiative. The term "addressed" means that some action has been initiated regarding the MMP violation, not that the violation has been resolved.

Table 13 lists the number of facilities in each Regional Water Board office that have one or more MMP violations, the number of facilities for which MMPs have been issued for all MMP violations, and the number of facilities that would require at least one enforcement action to cover any outstanding MMP violations. As shown, 189 or more enforcement actions would be necessary to cover the 2,664 violations remaining subject to MMPs. This is a significant improvement from the 491 actions needed at the beginning of calendar year 2008.

**Table 13: Facilities with MMP Violations and Pending Enforcement Actions
January 2000 to December 2008**

Regional Office	Facilities with MMP violations	Facilities with all MMP penalties issued	Facilities with pending MMP penalties
1	31	18	13
2	69	38	31
3	29	16	13
4	264	192	72
5F	21	20	1
5R	14	12	2
5S	76	49	27
Total Region 5	111	81	30
6A	2	0	2
6B	3	1	2
Total Region 6	5	1	4
7	21	2	19
8	18	12	6
9	22	21	1
TOTAL	570	381	189

Since January 2000, approximately 500 facilities received an enforcement action addressing mandatory minimum penalties. Of the 500 facilities that received an enforcement action, 385 facilities or 77% have not reported any violations that are subject to MMPs since the enforcement action was issued.

Because not all of the facilities have the same number of violations subject to mandatory minimum penalties, Figure 2 displays the distribution of facilities by the number of MMP violations with and without completed enforcement. The numbers indicate that of the 570 facilities that incurred in MMP violations, 308 or 54% have incurred ten or fewer MMP violations, and 154 facilities or 27% have more than fifty MMP violations each.

Figure 2: Distribution of Facilities by Number of MMP Violations

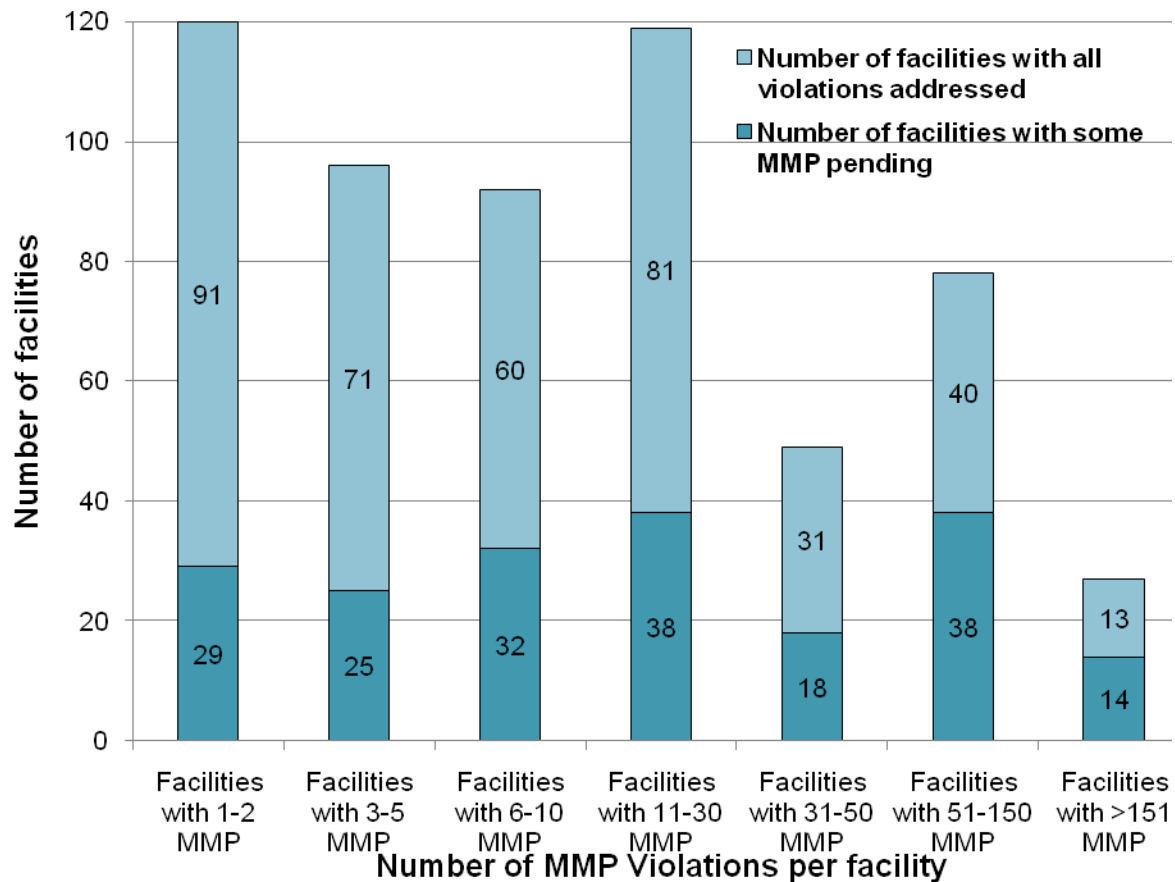


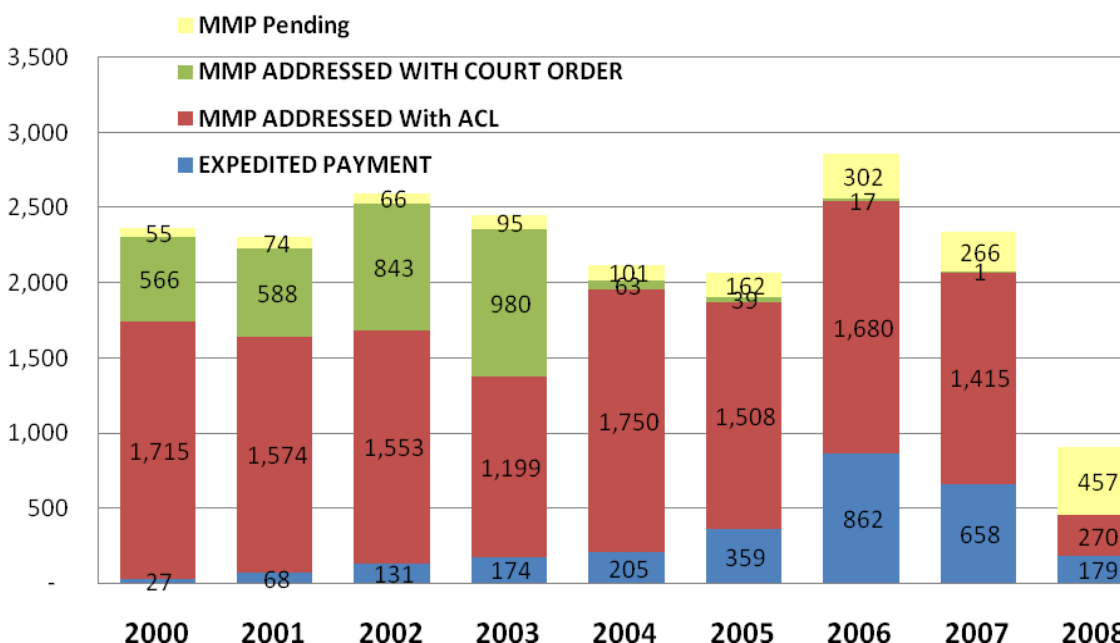
Figure 2 also reveals that the percentage of facilities with all MMPs addressed varies depending on the number of MMP violations per facility. Approximately 24% of facilities with 1-10 MMP violations still have pending MMP violations to be addressed compared to 52% of facilities with more than 151 violations each.

Enforcement of Mandatory Minimum Penalties on Effluent Violations

Early trends in MMP violations indicated an overall reduction in the number of violations at NPDES facilities. We believed that the reduction was partly a result of increased compliance due to the deterrent effect of MMPs. Data for 2003 and 2004 showed an increase in violations, but we believe this is partly due to an increased emphasis on recording and collecting these mandatory penalties. Additionally, the introduction of MMPs for reporting violations in 2004 put a greater emphasis on reviewing and tracking all such reports. The Regional Water Boards generally prioritize MMP issuance to facilities with greater compliance problems because of the staff costs associated with issuing ACLs. While MMPs were intended to be a streamlined process for penalty issuance, these penalties are often challenged by dischargers and can consume as much staff time as an ordinary ACL complaint assessing discretionary penalties.

Our transition to a new data system in mid-2005 caused a drop in the number of MMP violations entered into the database and linked to the appropriate enforcement actions, limiting our ability to track some violations. This was due to confusion and concern regarding the proper use of this data system. We anticipate that electronic submittal of monitoring reports, and automated generation and tracking of violation information will significantly improve our confidence in the data for MMP violations, and should simplify MMP issuance.

Figure 3: NPDES Wastewater MMP Effluent Violations 2000-2008 by Enforcement Type



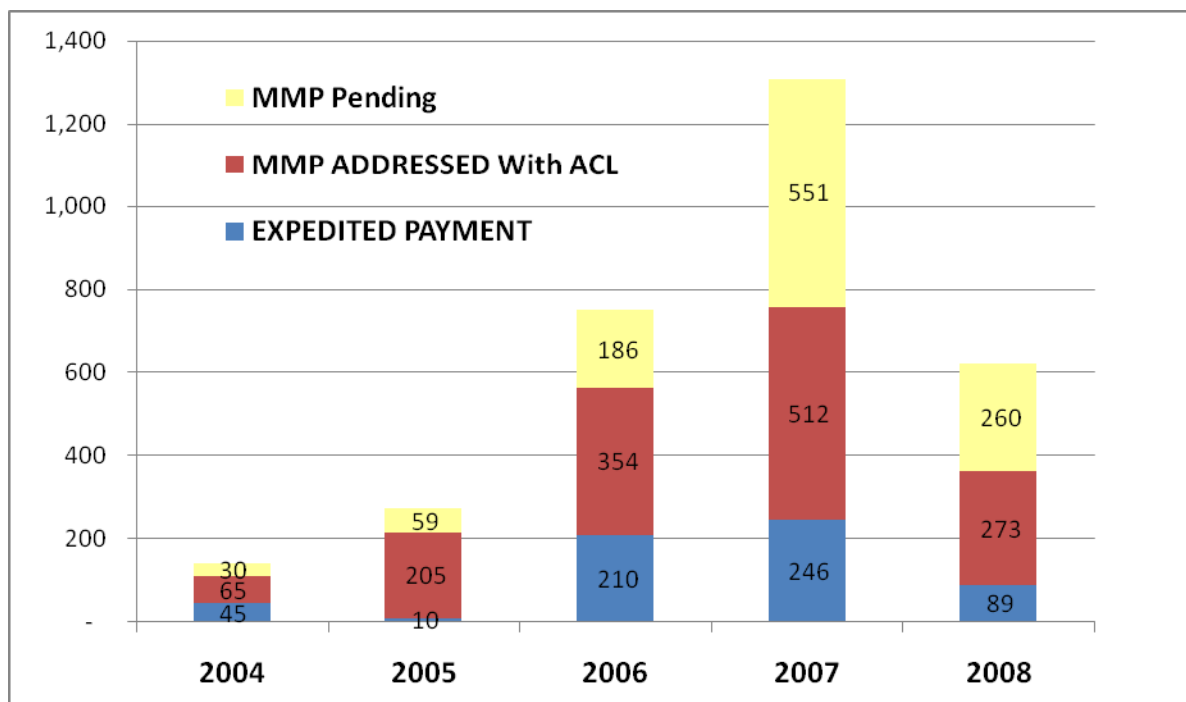
Enforcement of Mandatory Minimum Penalties on Serious Late Reporting Violations

Prompt and complete submission of self monitoring reports is a priority for the Water Boards because monitoring reports are the main instrument to ensure compliance with effluent limits and monitoring requirements in NPDES permits.

Compliance rates for reporting violations vary significantly among regions and type of dischargers. Typically most major dischargers submit their monitoring reports on time.

The following table displays the distribution and number of reporting violations over time and with the level of enforcement received.

Figure 4: NPDES Wastewater Late Report Serious Violations 2004-2008 with Level of Enforcement Received



Analysis of the Effectiveness of Current Enforcement Policies

The data presented in the tables throughout this report provide various perspectives on Water Board effectiveness relative to violations and enforcement actions. Having this data in a database and being able to use it has been a significant accomplishment since the late 1990's.

Our methodology for analyzing the overall effectiveness of our enforcement programs partially follows the recommendations and performance metrics identified in the Water Boards [Baseline Enforcement Report](#) for Fiscal Year 2006-2007 dated April 30, 2008⁴. At this point, not all the performance measures are supported by the data collected in our databases. That is why only the following measures of effectiveness will be used in analyzing the effectiveness of enforcement policies:

- Compliance rates (outcome measure)
- Enforcement response (outcome measure)
- Enforcement activities (output measure)
- MMP violations addressed (output measure)

Table 14: Selected Performance Measures NPDES Wastewater 2000-2008

Performance Measures for NPDES Wastewater									
Statewide Indicators	2000	2001	2002	2003	2004	2005	2006	2007	2008
Regulated facilities ⁽¹⁾	2,182	2,037	2,616	2,329	2,159	2,162	2,394	2,098	2,069
Number of violations	6,609	5,849	5,841	6,106	7,182	6,699	7,706	6,932	3,308
Number of facilities with violations ⁽²⁾	677	640	693	689	802	635	661	596	366
Compliance rate	69%	69%	74%	70%	63%	71%	73%	72%	83%
# Formal Enforcement Actions (including ACLs)	125	138	128	132	159	101	78	93	204
# Administrative Civil Liability Actions (Active or Historical)	88	112	96	93	121	64	47	56	176
# Other Enforcement Actions	715	497	457	436	474	277	282	263	610
Enforcement response (% of violations with enforcement)	73%	71%	70%	66%	60%	64%	64%	60%	57%
MMP Violations Addressed ⁽³⁾	2,281	2,162	2,396	2,179	1,813	1,547	1,697	1,416	270
% of MMP violations addressed⁽³⁾	97%	94%	92%	89%	86%	75%	59%	61%	30%

⁴ Available at

http://www.waterboards.ca.gov/water_issues/programs/enforcement/docs/baseline/enforcement_baseline_0607.pdf

- (1) Regulated facilities as reported on each year's 13385 enforcement report.
- (2) Facilities with violations include facilities with one or more violations.
- (3) Not including MMP violations in the process of being addressed with expedited payment letters.

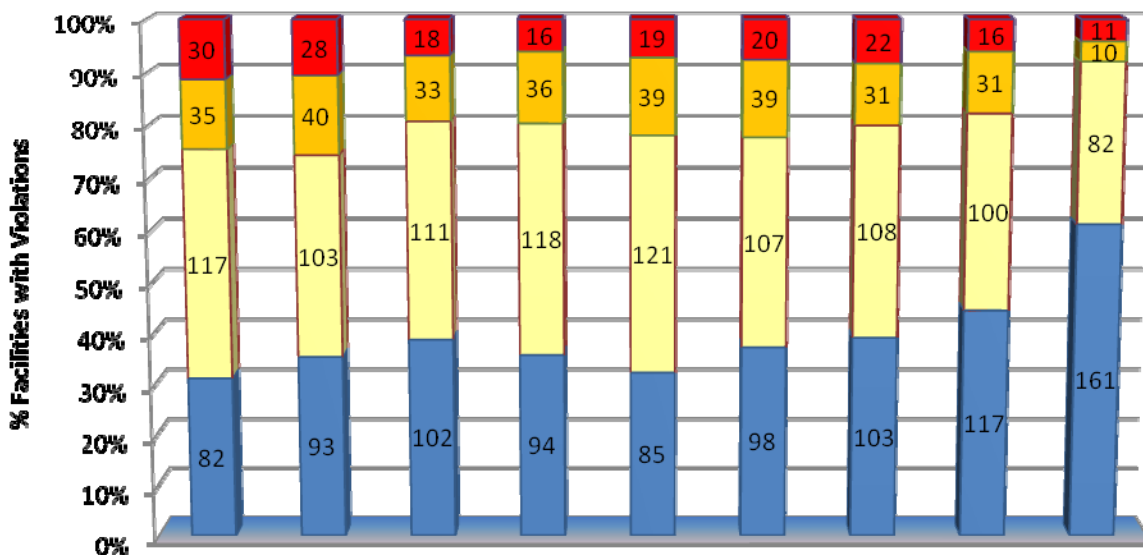
Table 14 includes the selected performance measures for the period 2000-2008 for the NPDES Wastewater program.

As mentioned before, data entry for 2008 is still incomplete, however, despite the fact that during the last 9 years, NPDES wastewater permits have seen an increase in the stringency of the water quality effluent requirements due to the implementation of new effluent standards, the number of documented violations for NPDES wastewater has remained relatively constant. Although not statistically significant, we see improvements in compliance rates over this period. The enforcement response has remained effective since a high percentage of violations received some level of enforcement during the last 9 years and, based on the number of actions taken, enforcement efforts have been consistent across the years. It is significant though, to mention the level of enforcement activity during the year 2008. As a result of the MMP initiative and the emphasis placed on enforcement by the Regional Water Boards, 204 formal actions have been issued in 2008 (almost double the number in 2007), of which 176 Administrative Civil Liabilities (ACL) were assessed at the minimum penalty and above. This number of ACLs in one single year is noteworthy and reflects the importance that enforcement has in the protection of water quality for the Water Boards.

The enforcement efforts dedicated to eliminate the backlog of violations subject to mandatory minimum penalties can be clearly seen. The numbers in the previous table show that only 12% of MMP violations occurring between 2000-2008 have not been addressed as required in statute. This is a remarkably improved situation than where the Water Boards were a year ago where 57% of MMP violations had not been addressed. Some regions, such the San Diego Regional Water Board, have completely eliminated their backlog and additional efforts are planned to completely eliminate the backlog by the end of calendar year 2009. Basically, during calendar year 2008, the Water Boards have been able to address approximately the same number of violations that were addressed during the previous 7 years.

One of the most important performance measures for the Water Boards is the compliance rate. Of special significance, because of their threat to water quality, is the compliance rate for NPDES Wastewater Major Facilities. Compliance rates among Major NPDES wastewater facilities are improving overtime. Not only has the total number of Major facilities with violations recorded been reduced but the number of facilities with more than 25 violations during the year has seen a significant reduction, going from 30 in the year 2000 to only 16 in 2007 and 11 in 2008. Figure 4 displays the distribution of the number of NPDES major facilities with no violations, the number of facilities with one to 10 violations, the number of facilities with 11 to 25 violations and the number of facilities with more than 25 violations.

Figure 5: Number of NPDES Wastewater Major Facilities 2000-2008. Compliance Rates



	2000	2001	2002	2003	2004	2005	2006	2007	2008
> 25 violations	30	28	18	16	19	20	22	16	11
11-25 violations	35	40	33	36	39	39	31	31	10
1-10 violations	117	103	111	118	121	107	108	100	82
No violations	82	93	102	94	85	98	103	117	161

Year

Despite the significant enforcement achievements during calendar year 2008, and because enforcement resources are limited, additional progress is still needed. The Water Boards need to develop the information tools to help the enforcement programs prioritize their enforcement efforts and to evaluate the effectiveness of the enforcement activities. Performance measures that evaluate discharger’s responses to specific water board actions are necessary. Performance measures are also needed to evaluate the long term impacts on compliance (deterrence, recidivism) and to evaluate the reduction of pollutants discharged as a result of the Water Boards’ enforcement actions.

Update on Recent Enforcement Initiatives

Several initiatives were launched in 2008 to leverage existing resources to identify potential violations and achieve timely and effective enforcement. These included:

Water Board/Attorney General Pilot Enforcement Initiative

A pilot program was developed through the initiative of the State Water Board's Office of Enforcement and the Los Angeles Regional Board, to develop staff water quality enforcement expertise in the Attorney General's Office. Funds were allocated from the Cleanup and Abatement Account and an Interagency Agreement was approved in August 2008 for a three year pilot, to develop the working relationship between the Los Angeles Water Board and the Attorney General's office, and to develop, refer and prosecute water quality enforcement cases.

Water Board/Department of Fish and Game Inspection Initiative

In April 2008 the Department of Fish and Game (DFG), the State Water Board, and the Los Angeles Regional Water Board agreed to improve and coordinate enforcement efforts between the two agencies. Approximately six (6) locations within the Los Angeles and Ventura County area were identified where teams of DFG and Regional Water Board staff would participate in joint inspections. Over the next four months, the DFG/Regional Water Board teams completed joint inspections at all identified sites. Some of these joint inspections led to formal or informal enforcement actions, while other investigations are ongoing. In September 2008, DFG and Water Board staff met to evaluate their progress and identify next steps. The team is currently working on a joint enforcement "field manual" for DFG and Water Board staff based on this initiative.

Compliance Schedule Policy

In early 2008, the State Water Board adopted a [Compliance Schedule Policy](#) that establishes uniform provisions for authorizing compliance schedules and improves statewide consistency in implementing these provisions in the state's NPDES permit program. In the policy, the State Water Board established that compliance schedules for [NDPES permits](#) only be granted in certain circumstances, such as when the discharger must implement actions to comply with a more stringent permit limitation, implement new or significantly expanded programs and comply with permit limitations implementing new, revised, or newly interpreted water quality objectives or criteria in water quality standards. The policy requires that compliance schedules be granted for the minimum amount of time necessary to achieve compliance.

Summary of Enforcement Actions and Compliance Rates

[Assembly Bill 729](#) (Simitian, 2006) enacted Water Code sections 13225 and 13323 which requires the following:

13225. Each regional board, with respect to its region, shall do all of the following:

(e) Report rates of compliance with the requirements of this division.

(k) In consultation with the state board, identify and post on the Internet a summary list of all enforcement actions undertaken by that regional board and the dispositions of those actions, including any fines assessed. This list shall be updated at least quarterly.

13323. (e) Information relating to hearing waivers and the imposition of administrative civil liability, as proposed to be imposed and as finally imposed, under this section shall be made available to the public by means of the Internet.

During 2008, the Water Boards implemented an interim process to display the penalty information required in Section 13225(k) and 13323(e) on each of the regional water boards' Web sites. The compliance rate information required under section 13325(e) was initially reported in the [2008 Baseline Enforcement Report](#) and has been updated in this 2008 Water Code Section 13385 Enforcement Report. The Water Boards' upcoming Annual Enforcement Report will display the compliance rates for each of the core regulatory programs. Plans for early 2009 include the rollout of a new public report that will be available on the Water Boards' Web site that will display Administrative Civil Liability Order information contained in the CIWQS database. The [list of enforcement actions](#) required under Water Code section 13255(k) is currently available through the CIWQS public reports link.

V. Update on Previous Report Recommendations

The 2007 California Water Code section 13385(o) enforcement report included the following nine recommendations to improve the effectiveness of the enforcement program. Most of the recommendations are in the process of being implemented. Here is an update on each recommendation.

1. *Propose revision of the January 1 reporting deadline for the previous year's data to allow for more complete reporting of this data.*

Update: To facilitate a more complete reporting of data, the Water Boards will be updating the data provided in this report on a quarterly basis. These quarterly updates of the report will be available on the Water Boards public website. By January 1 of each year an analysis of the effectiveness of the Water Board's enforcement policies including the mandatory minimum penalties will be posted. New technology and database development is now allowing the Water Boards to more efficiently provide this information on a quarterly basis.

2. *Revise the Water Quality Enforcement Policy to ensure it is clear, current, and ensures compliance with existing permits and basin plans.*

Update: In February 2008, the State Water Board held a workshop to consider comments regarding proposed revisions to the Water Quality Enforcement Policy. Following that workshop, a Steering Committee comprised of State and Regional Water Board Executive Team members was convened to provide direction in response and in addition to comments received at the workshop. Currently, elements of the Water Quality Enforcement Policy are being addressed at different intervals. The first element to be considered is the Water Boards' funding of supplemental environmental projects through enforcement settlements and the funding of water quality improvement projects through the State Water Pollution Cleanup and Abatement Account (CAA). Two draft proposed policies were released for public comment on October 15, 2008 which are being considered for adoption by the State Water Board at the February 3, 2009 Board meeting. The two proposed policies under consideration would revise the criteria for the approval of supplemental environmental projects and provide a framework for the distribution of funds for water quality improvement projects through the CAA. A second stage in the enforcement policy will address other enforcement issues, including but not limited to, recommendations for determining administrative civil liability for water quality violations enforced under the Water Code. A staff workshop on the proposed revisions is scheduled for January 16, 2009 with the expectation for State Water Board consideration in mid-2009.

3. *Standardize NPDES permitting to increase certainty and expectations for staff and dischargers, and to restore efficiency and performance to these efforts.*

Update: The Water Boards have completed a standardized NPDES permit template and this is being used by all of the Regional Water Boards. Use of the template has led to further improvements in the template form and consistency in permit content, and improved efficiencies throughout the state. Potential next steps may include State Water Board adoption of the template in a policy that also identifies standard permitting procedures to further increase standardization of NPDES permitting and resulting efficiencies.

4. *Standardize the issuance of MMPs to maximize efficiency and minimize the resource impacts of these new requirements.*

Update: As discussed earlier in this report, the 2008 statewide initiative for MMP enforcement (for violations occurring between 2000-2008) provided dischargers the opportunity to resolve their violations and provide payment for any accrued mandatory penalties.

5. *Continued development of electronic submittal and analysis of monitoring reports, and automated generation and tracking of violation information.*

Update: The Water Board released a new version of its electronic self-monitoring reporting (eSMR2) in the June of 2008. This new version has several major changes that were developed with the assistance of the eSMR User Group that is made up of dischargers from around the state. These changes removed the CIWQS automated compliance checking and replaced it with a wizard that the discharger uses to self-report their violations. Initial testing on the system was conducted during the Summer of 2008 with several facilities participating and with the oversight of the eSMR User Group. In September 2008, the Water Board began an incremental rollout starting with the Redding Office of the Central Valley Regional Water Board. Rollout will continue through the end of 2009 with a goal having the majority of dischargers using eSMR2 in 2010.

6. *Development of public reporting of violations and compliance rates of dischargers, both as a disincentive to violate and to build partnerships in enforcement with public interest groups and interested communities. This includes development and public reporting of enforcement performance measures on the Internet to engage the public in a productive dialogue about discharger performance, environmental effects, Water Board workload, and Water Board performance.*

Update: The [baseline enforcement report](#)⁵ for fiscal year 2006-2007 identified a set of performance measures to be used in the Water Boards' enforcement

⁵ Baseline enforcement report available at http://www.waterboards.ca.gov/water_issues/programs/enforcement/docs/baseline/enforcement_baseline_0607.pdf

programs. The report included information on compliance rates and enforcement responses including the NPDES program. Other public reports, such the recently released [Cal/EPA annual enforcement report](#) also incorporate compliance rates for NPDES programs. In 2007, a [Public Reports Users Group](#) was formed with the goal of making available reports that are more user-friendly and accurate. This group has produced several products and continues to meet on a monthly basis.

7. *Issuance of an annual enforcement report that expands upon the reporting in this document, and includes an analysis of available enforcement resources, violation and enforcement data for all of our regulatory programs, and development of enforcement performance measures.*

Update: The Baseline Enforcement Report including NPDES and Stormwater enforcement activities for fiscal year 2006-2007 was released on April 30, 2008. The next annual enforcement report for fiscal year 2007-2008 will be released in February 2009. The Water Boards are also contributing to the California Environmental Protection Agency (CALEPA) 2007 Annual Enforcement Report⁶.

8. *Conduct an assessment of violations at federal facilities, and discuss the findings and recommendations with USEPA.*

Update: An assessment of violations at federal facilities is now included in this report. This information will be discussed during regularly scheduled meetings. The recording of all violations at federal facilities will be a key to future assessments and will be a Water Boards priority for 2009.

9. *Ensure the data reports presented above are available for live, public use on the Internet.*

Update: Many of the tables included in this report are already available at the Water Board public reports web site.
http://www.waterboards.ca.gov/water_issues/programs/ciwqs/publicreports.shtml

⁶ The CALEPA Annual Enforcement Report is available at
<http://www.calepa.ca.gov/PressRoom/Releases/2008/PR11-1205.pdf>

VI. Recommendations and Actions for Future Reports

- To improve data quality and consistency in data entry, the Office of Enforcement is planning an enforcement data project to identify and prepare a plan of correction to address all issues related to enforcement data.
- The Office of Enforcement will prepare a comprehensive report on the 2008 Statewide Initiative for MMP Enforcement.
- Update information to meet the requirements of sections 13385(o)(1) and 13385(o)(2) on a quarterly basis.
- Conduct an analysis of the effectiveness of current enforcement policies, including mandatory minimum penalties by individual regional board office.
- Develop measures to evaluate the impact of mandatory minimum penalties on compliance, deterrence and recidivism.
- Develop the necessary tracking systems to measure the environmental benefits gained as a result of an enforcement action.
- Include with this report, at the State Water Board public web site, the metadata that supports the numbers provided in this report.

Appendix A: List of Regional Water Board Offices

CALIFORNIA REGIONAL WATER QUALITY CONTROL BOARDS

North Coast Region (1)

5550 Skylane Blvd, Suite A
 Santa Rosa, CA, 95403
 Catherine E. Kuhlman, EO
 TEL: (707) 576-2220
 FAX: (707) 523-0135

Central Coast Region (3)

895 Aerovista Place,
 Suite 101
 San Luis Obispo, CA 93401
 Roger W. Briggs, EO
 TEL: (805) 549-3147
 FAX: (805) 543-0397

Lahontan Region (6SLT)

2501 Lake Tahoe Blvd.
 South Lake Tahoe, CA,
 96150
 Harold J. Singer, EO
 TEL: (530) 542-5400
 FAX: (530) 544-2271

San Francisco Bay Region (2)

1515 Clay Street,
 Suite 1400
 Oakland, CA, 94612
 Bruce H. Wolfe, EO
 TEL: (510) 622-2300
 FAX: (510) 622-2460

Los Angeles Region (4)

320 W. 4th St., Suite 200
 Los Angeles, CA, 90013
 Tracy Egoscue, EO
 TEL: (213) 576-6600
 FAX: (213) 576-6640

Victorville Office (6V)

14440 Civic Dr, Suite 200
 Victorville, CA, 92392
 Cindi Mitton, SWRCE
 TEL: (760) 241-6583
 FAX: (760) 241-7308

Central Valley Region (5S)

11020 Sun Center Drive, #200
 Rancho Cordova, CA 95670
 Pamela Creedon, EO
 TEL: (916) 464-3291
 FAX: (916) 464-4645

Colorado River Basin Region (7)

73-720 Fred Waring Drive
 Suite 100
 Palm Desert, CA, 92260
 Robert Perdue, EO
 TEL: (760) 346-7491
 FAX: (760) 341-6820

Fresno Office (5F)

1685 "E" Street
 Fresno, CA, 93706
 Loren J. Harlow, AEO
 TEL: (559) 445-5116
 FAX: (559) 445-5910

Redding Office (5R)

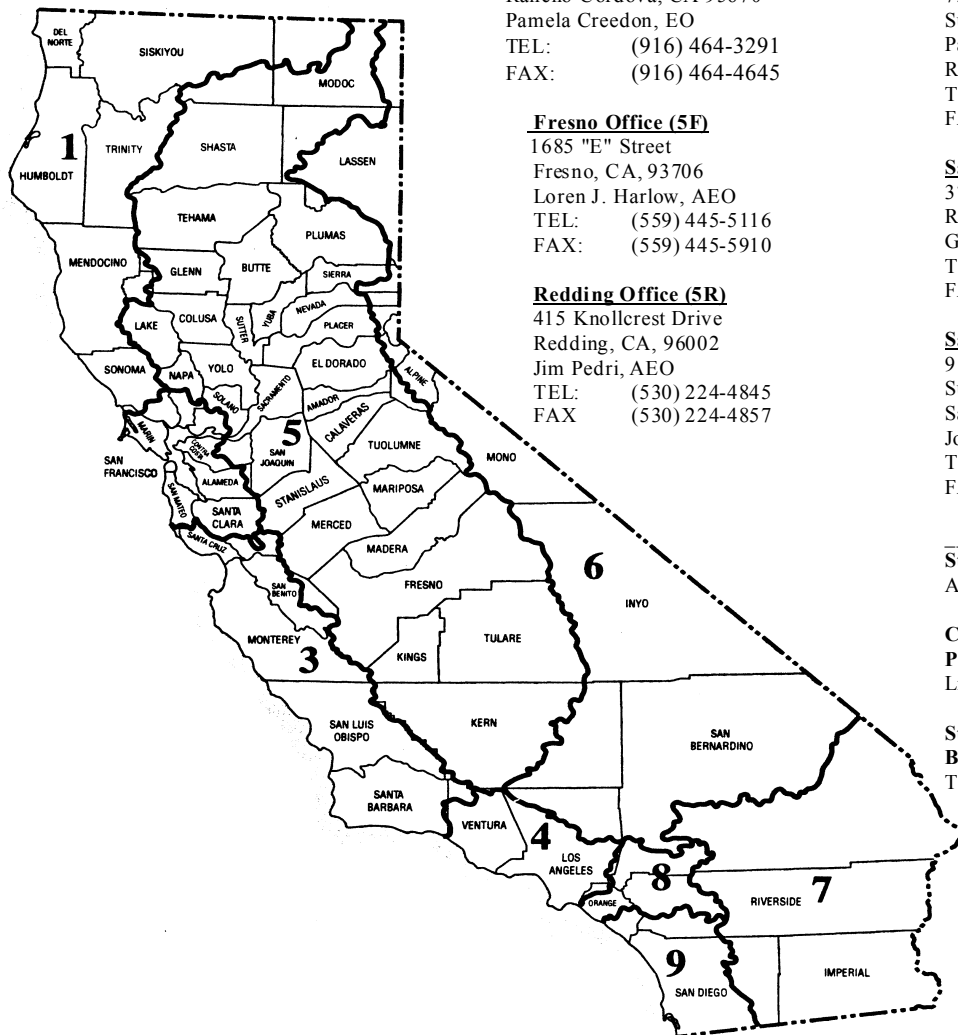
415 Knollcrest Drive
 Redding, CA, 96002
 Jim Pedri, AEO
 TEL: (530) 224-4845
 FAX: (530) 224-4857

Santa Ana Region (8)

3737 Main Street, Suite 500
 Riverside, CA, 92501
 Gerald J. Thibeault, EO
 TEL: (951) 782-4130
 FAX: (951) 781-6288

San Diego Region (9)

9174 Sky Park Court,
 Suite 100
 San Diego, CA, 92123
 John Robertus, EO
 TEL: (858) 467-2952
 FAX: (858) 571-6972



State of California

Arnold Schwarzenegger, *Governor*

California Environmental Protection Agency

Linda S. Adams, *Secretary*

State Water Resources Control Board

Tam M. Doduc, *Board Chair*

Appendix B: Listing and Description of Violation Types Used in the CIWQS Data System

Category 1 pollutant – Category 1 pollutants as defined by USEPA include:

<u>Oxygen Demand</u> Biochemical Oxygen Demand Chemical Oxygen Demands Total Organic Carbon Other	<u>Detergents and Oils</u> MBAS NTA Oil and Grease Other detergents or algaecides
<u>Solids</u> Total Suspended Solids (Residues) Total Dissolved Solids (Residues) Other	<u>Minerals</u> Calcium, Chloride, Fluoride, Magnesium, Sodium, Potassium, Sulfur, Sulfate, Total Alkalinity, Total Hardness, Other Minerals
<u>Nutrients</u> Inorganic Phosphorus Compounds Inorganic Nitrogen Compounds Other	<u>Metals</u> Aluminum, Cobalt, Iron, Vanadium

Category 2 pollutant – Category 2 pollutants as defined by USEPA:

Metals (all forms) - Other metals not specifically listed under Group I

Inorganics - Cyanide, Total Residual Chlorine

Organics - All organics are Group II except those specifically listed under Group I.

Other effluent violation – Any violation of an effluent requirement not cover under Category 1 or Category 2.

Chronic Toxicity – Violation of a chronic toxicity effluent requirement.

Acute Toxicity – Violation of an acute toxicity effluent requirement.

Violation of Non-effluent Permit Condition – Violation of any permit condition not pertaining to effluent requirements.

Reporting – Late report, failure to submit a report, or a report that is either not complete or contains errors.

Monitoring – Failure to conduct required monitoring

Compliance schedule – Failure to comply with a compliance schedule in a permit. This does not include schedules in an enforcement order likes a Cease & Desist and Time Schedule Orders.

Sanitary Sewer Overflow – Any spill from a sanitary sewer collection system or pump station.

Unauthorized Discharge – Any discharge other than allowed by WDRs that is not a sanitary sewer overflow.

Unregulated Discharge – Discharge from a site not currently under WDRs.

Groundwater – Any release to groundwater that violates permit conditions or basin plan prohibitions.

BMP – Failure to implement proper best management practices.

SWPPP – Failure to complete or update a stormwater pollution prevention plan.

Failure to obtain permit – Failure to obtain the appropriate permit prior to discharge or regulated activity.

Other Codes – Violations of codes sections other that the California Water Code.

Enforcement Action – Failure to comply with a previous enforcement order by not meeting its requirements, its time schedule, or failure to pay penalties.

Basin Plan Prohibition – Violation of any basin plan prohibition.

Appendix C: Types and Classification of Enforcement Actions

Type of Enforcement Action	Description	Classification
Expedited Payment Offer	A conditional offer that provides a discharger with an opportunity to resolve any outstanding violations subject to mandatory minimum penalties by acknowledging them and providing full payment of the accrued mandatory penalties identified in the payment letter	Informal
Verbal Communication	Any communication regarding the violation that takes place in person or by telephone.	Informal
Staff Enforcement Letter	Any written communication regarding violations and possible enforcement actions that is signed at the staff level.	Informal
Notice of Violation	A letter officially notifying a discharger of a violation and the possible enforcement actions, penalties, and liabilities that may result. This letter is signed by the Executive Officer.	Informal
Notice to Comply	Issuance of a Notice to Comply per Water Code Section 13399.	Formal
13267 Order	A letter utilizing Water Code Section 13267 authority to require further information or studies.	Formal
Clean-up and Abatement Order	Any order pursuant to Water Code Section 13304.	Formal
Cease and Desist Order	Any order pursuant to Water Codes Sections 13301-13303.	Formal
Time Schedule Order	Any order pursuant to Water Code Section 13300.	Formal
Administrative Civil Liability (ACL) Complaint	ACL Complaint issued by the Executive Officer.	Formal
Administrative Civil Liability (ACL) Order	An ACL Order that has been imposed by the Water Board or SWRCB.	Formal
Settlement	A settlement agreement per California Government Code Section 11415.6.	Formal
Referral	Referral to the District Attorney, Attorney General, or USEPA.	Formal
Referred to a Task Force	Any referral of a violation to an environmental crimes task force.	Formal
Referral to Other Agency	Any referral to another State Agency.	Formal
Third Party Action	An enforcement action taken by a non-governmental third party and to which the State or Water Board is a party.	Formal
Waste Discharge Requirements	Any modification or rescission of Waste Discharge Requirements in response to a violation.	Formal

Appendix D: List of Facilities with Violations Subject to MMP Actions and Violations Receiving Penalties by Regional Board Office from 1-1-2000 through 12-15-2008

Facilities with MMP s					ADDRESSED AND IN PROGRESS	PENDING	Grand Total
REGION OFFICE	FACILITY	WDID	FACILITY NAME	AGENCY NAME			
1	206164	1B82114OHUM	ARCATA CITY WWTF	City of Arcata	118	9	127
1	213577	1A84005ODN	CC HARBOR SEAFOOD WW SYSTEM	CRESCENT CITY HARBOR DISTRICT	21	3	24
1	213614	1B80073OHUM	CDF&G MAD RIVER HATCHERY	Ca Dept of Fish & Game Redding	1		1
1	213616	1A80077OTRI	CDF&G TRINITY RIVER HATCHERY W	Ca Dept of Fish & Game Redding	2		2
1	215141	1B80121OHUM	COLLEGE OF THE REDWOODS, POTW	COLLEGE OF THE REDWOODS	22		22
1	216106	1A84006ODN	Crescent City WWTP	Crescent City	31	22	53
1	223010	1B82151OHUM	EUREKA CITY ELK RIVER WWTP	Eureka City	9		9
1	223075	1B77005OHUM	EVERGREEN PULP INC (LP SAMOA)	Evergreen Pulp Inc	46	162	208
1				Stockton Pacific Ent Inc		6	6
1	224088	1B85026NHUM	FAIRHAVEN POWER PLANT	DG Fairhaven Power LLC	6		6
1	224348	1B83136OHUM	FERNDALE CITY POTW	Ferndale City	22	13	35
1	224901	1B83100OSON	Forestville Water District	FORESTVILLE WATER DISTRICT	29	1	30
1	225055	1B84083OMEN	FORT BRAGG CITY WWTP	Fort Bragg City	66		66
1	225089	1B83135OHUM	FORTUNA CITY WWTP	Fortuna City	14		14
1	229801	1B83056OMEN	HARWOOD PROD. BRANSCOMB MILL	HARWOOD PRODUCTS	5		5
1	229922	1B82046OSON	HEALDSBURG CITY WWTP	Healdsburg City	120	2	122
1	237295	1B80081OHUM	LOLETA POTW	LOLETA CSD	155		155
1	240093	1B82084OHUM	MCKINLEYVILLE WWTP	MCKINLEYVILLE CSD	71	1	72
1	240307	1B83129OMEN	MENDOCINO CITY CSD	MENDOCINO CITY CSD	2		2
1	240318	1B83118OMEN	MENDOCINO CWWD#2-ANCHOR BAY	MENDO CO WWD #2 ANCHOR BAY	13		13
1	248195	1B82085OHUM	PG&E HUMBOLDT BAY POWER PLANT	Pacific Gas & Electric Company Eureka		2	2
1	248563	1B83104OHUM	Town of Scotia	Humboldt Redwood Company (non storm water)		9	9

Facilities with MMP s							ADDRESSED AND IN PROGRESS	PENDING	Grand Total
REGION OFFICE	FACILITY	WDID	FACILITY NAME	AGENCY NAME					
1				Palco (non-stormwater sites)			2	2	
1	252211	1B83147OHUM	REDWAY POTW	REDWAY CSD			6	6	
1	252750	1B83134OHUM	Rio Dell City WWTF	Rio Dell City			21	21	
1	255703	1B83099OSON	SANTA ROSA CITY WWTP, LAGUNA	Santa Rosa City			17	1	18
1	256050	1B84060OSON	GRATON CSA	Graton CSD			13		13
1	256056	1B83001OSON	SCWA OCCIDENTAL CSD	SONOMA COUNTY WATER AGENCY			99	10	109
1	256061	1B82045OSON	SCWA RUSSIAN RIVER CSD	SONOMA COUNTY WATER AGENCY			47		47
1	256749	1B84086OHUM	SHELTER COVE POTW	HCRID #1			15	1	16
1	266694	1A84002OSIS	TULELAKE CITY WWTP	Tulelake City			164		164
1	268960	1B84029OMEN	UKIAH CITY WWTP	Ukiah City, DPW			5		5
1	272646	1B80078OMEN	WILLITS CITY WWTP	Willits City			9		9
1 Total							1,151	242	1,393
2	202038	2 438132002	2256 JUNCTION, Van Waters	Univar USA Inc.				5	5
2	203213	2 019216001	4501 Tidewater Ave, Oakland	HANSON AGGREGATES				89	89
2	205477	2 283021001	AMERICAN CANYON WATER RECYCLING	AMERICAN CANYON CITY			32		32
2	205781	2 215002001	ANGEL ISLAND STATE PK - WWTP	CA Dept of Parks & Rec Novato			15		15
2	209253	2 482001001	BENICIA WWTP	BENICIA, CITY OF			27		27
2	210839	2 417005001	BURLINGAME WWTP	Burlingame City			12	1	13
2	211788	2 019320001	Bottling Group LLC	NEW CENTURY BEVERAGE COMPANY			4		4
2	212212	2 071006001	C & H SUGAR	C & H SUGAR			45	41	86
2	212585	2 417022002	CALERA CREEK WATER RECYCLING PLANT	PACIFICA, CITY OF			142	10	152
2	212750	2 283003001	Calistoga City Dunaweal WWTP	CALISTOGA CITY			22		22
2	213889	2 215116001	CENTRAL MARIN SAN. AGCY. WWTP	Central Marin Sanitation Agency			13	1	14
2	215234	2 071107001	COMBINED OUTFALL	West County Agency			2		2

Facilities with MMP s					ADDRESSED AND IN PROGRESS	PENDING	Grand Total
REGION OFFICE	FACILITY	WDID	FACILITY NAME	AGENCY NAME			
2	216164	2 071201001	CROCKETT COGENERATION	CROCKETT COGENERATION		1	1
2	217831	2 071032001	City of PINOLE WWTP	PINOLE, CITY OF	13		13
2	219552	2 071013001	DELTA DIABLO SAN. DIST. WWTP	DELTA DIABLO SANITATION DIST.	8		8
2	220792	2 019033001	DUBLIN SAN RAMON SD WWTP	DUBLIN SAN RAMON SERVICES DISTRICT (WWTP NPDES &SSO)	4	1	5
2	222123	2 019123001	EBDA COMMON OUTFALL	EAST BAY DISCHARGERS AUTHORITY	1	3	4
2		2 019025001	EBDA COMMON OUTFALL	LIVERMORE CITY	1		1
2	222130	2 019014002	EBMUD SD#1-WET WTHR BYPASS	EAST BAY MUNICIPAL UTILITY DISTRICT (WPCP)		1	1
2	222132	2 019014001	EBMUD WPCP	EAST BAY MUNICIPAL UTILITY DISTRICT (WPCP)	9		9
2	223236	2 071227001	East Brother Light Station Inc	East Brother Light Station Inc		100	100
2	225526	2 482005001	FSSD SUBREGIONAL WWTP	Fairfield Suisun Sewer District	32	43	75
2	226932	2 071001001	GENERAL CHEMICAL- WWTP	GENERAL CHEMICAL	50		50
2	228579	2 071170001	GWF -SITE I (E. Third St.) Power Plant	GWF POWER SYSTEMS L. P.	1		1
2	228968	2 071048001	Golden Eagle Refinery WWTP	TESORO REFINING & MARKETING CO	12		12
2	229631	2 386028001	HANSON AGGREGATES SF Pier 92	HANSON AGGREGATES	55		55
2	230899	2 386003001	HUNTERS POINT POWER PL	Pacific Gas & Electric Company	1		1
2	235164	2 019328001	KOBE PRECISION INC	Kobe Precision Inc	2		2
2	236598	2 215012001	LAS GALLINAS WWTP	Las Gallinas Valley Sanitary District	21	3	24
2	237195	2 019025001	CITY of Livermore WRP	LIVERMORE CITY	5		5
2	239498	2 215021002	MARIN CSD 5 PARADISE COVE WWTP	MARIN COUNTY Sanitary District #5	1		1
2	240791	2 417019001	MILLBRAE WWTP	MILLBRAE, CITY OF	4		4
2	241493	2 019112001	MORTON SALT DIVISION- NEWARK	MORTON INTERNATIONAL, INC.	7		7
2	241815	2 071029001	MT. VIEW SANITARY DISTRICT WWTP	MT. VIEW SANITARY DISTRICT	3		3
2	243858	2 283009001	NAPA SD WWTP	NAPA SANITATION DISTRICT	55		55

Facilities with MMP s					ADDRESSED AND IN PROGRESS	PENDING	Grand Total
REGION OFFICE	FACILITY	WDID	FACILITY NAME	AGENCY NAME			
2	244566	2 417021001	NORTH SAN MATEO COUNTY SANITATION DISTRICT WWTP	NORTH SAN MATEO COUNTY SANITATION DISTRICT	1		1
2	244705	2 215022001	NOVATO AND IGNACIO WWTP	NOVATO SANITARY DISTRICT	123		123
2	246176	2 438265002	OREGON EXP UNDERPASS	SANTA CLARA CO ROADS & AIRPORT	2		2
2	246217	2 019032001	ORO LOMA/CASTRO VALLEY SD WPCP	Oro Loma Sanitary District		1	1
2	247207	2 071030005	PG&E SHELL POND	Pacific Gas & Electric Company	13	2	15
2	247457	2 438011001	PALO ALTO REGIONAL WQCP	PALO ALTO, CITY OF	54		54
2	248087	2 494006001	PETALUMA WPCP	PETALUMA CITY	71		71
2	248542	2 071030001	PITTSBURG POWER PLANT	MIRANT DELTA, LLC	2		2
2	248720	2 019156001	PLEASANTON QUARRY	VULCAN MATERIALS / CALMAT DIV.	3		3
2	248886	2 071034001	PORT COSTA WWTP	CONTRA COSTA COUNTY SD NO. 5	19		19
2	252650	2 071044001	RICHMOND REFINERY	CHEVRON PRODUCTS COMPANY	1		1
2	252657	2 071037001	RICHMOND WPCP	RICHMOND, CITY OF	70	1	71
2	253174	2 071039001	RODEO Sanitary District WWTP	RODEO SANITARY DISTRICT	32	3	35
2	254881	2 417038001	South San Francisco-San Bruno WQCP	South San Francisco City	43		43
2	255139	2 417068001	SAM WWTP (Sewer Authority Mid- Coastside Wastewater Treatment Plant)	SEWER AUTHORITY MID- COASTSIDE	21		21
2	255284	2 071051001	CONOCOPHILLIPS' S.F. REFINERY, RODEO - SLIC, NPDES, SUB15	ConocoPhillips Rodeo	29		29
2	255333	2 438014001	SAN JOSE/SANTA CLARA WPCP	San Jose City	1	3	4
2	255420	2 417035001	SAN MATEO WWTP	San Mateo City	23	2	25
2	255788	2 215015001	SASM WWTP	SEWERAGE AGENCY OF SOUTHERN MARIN	7	1	8
2	255802	2 215023001	SAUSALITO STP	SAUSALITO-MARIN CITY SAN DIST	84	1	85
2	255833	2 417037001	SBSA WWTP	SOUTH BAYSIDE SYSTEM AUTHORITY	4		4

Facilities with MMP s							
REGION					ADDRESSED AND IN PROGRESS	PENDING	Grand Total
OFFICE	FACILITY	WDID	FACILITY NAME	AGENCY NAME			
2	256499	2 386010001	SF - SE North Point & Bayside	SAN FRANCISCO, CITY & CO, PUBLIC UTILITIES COMMISSION	2		2
2	256506	2 417033001	San Francisco International Airport IWTP	SAN FRANCISCO AIRPORT COMMISSION	12		12
2	256507	2 417032001	San Francisco International Airport WQCP	SAN FRANCISCO AIRPORT COMMISSION	11	4	15
2	256695	2 071042001	SHELL MARTINEZ REFINERY WWTP	MARTINEZ REFINING CO	2	19	21
2	257754	2 494009001	SONOMA VALLEY COUNTY SD WWTP	SONOMA COUNTY WATER AGENCY	77	1	78
2	259507	2 438018001	SUNNYVALE WPCP	SUNNYVALE CITY	16		16
2	269601	2 071059001	USS POSCO Industries - NPDES/SUB15	USS-POSCO INDUSTRIES	2	2	4
2	269973	2 482004001	VALERO BENICIA REFINERY	Valero Refining Company-CA	8	1	9
2	269988	2 019018001	VALLECITOS NUCLEAR CENTER-Land Disposal	GENERAL ELECTRIC COMPANY	4	2	6
2	270006	2 482012001	VALLEJO SFCO WWTP	VALLEJO SAN AND FLOOD CONT DIS	17		17
2	272082	2 071107001	WEST COUNTY WW DISTRICT WPCP	West County Agency		6	6
2	(blank)	(blank)	(blank)	(blank)	57	15	72
2	231301	2 386058002	Harry Tracy WTP	San Francisco PUC		1	1
2	201399	2 438457002	1098 ALTA AVE	RICHARD BEERY		1	1
2 Total					1,410	365	1,775
3	206887	3 40041144	AVILA VALLEY HOT SPRINGS	King Ventures		48	48
3	209484	3 440800001	BIG BASIN WWTP	CA STATE PARKS	51	2	53
3	212681	3 400108001	CALIFORNIA MEN'S COLONY	Ca Dept of Corrections San Luis Obispo	170	9	179
3	213281	3 270101001	CARMEL AREA WWTP	CARMEL AREA WWD	2		2
3	213332	3 420101001	CARPINTERIA SD WWTP	CARPINTERIA SD	7		7
3	216428	3 421003001	CUYAMA CSD WWTP	CUYAMA COMMUNITY SERVICES DIST	2	6	8

Facilities with MMP s							ADDRESSED AND IN PROGRESS	PENDING	Grand Total
REGION OFFICE	FACILITY	WDID	FACILITY NAME	AGENCY NAME					
3	220808	3 402003002	Morro Bay Power Plant	Morro Bay Power Plant			10	10	
3	220809	3 272011001	Moss Landing Power Plant	Moss Landing Power Plant			3	3	
3	222443	3 420108001	EL ESTERO WWTP NPDES	SANTA BARBARA CITY PWD			39	39	
3	227568	3 420102001	GOLETA SD WWTP	GOLETA SD			1	1	
3	230357	3 270115001	HIGHLANDS SA WWTP	Highlands Sanitary Assoc			31	31	
3	237315	3 420105001	LOMPOC REGIONAL WWTP	Lompoc City			31	3	34
3	241479	3 400103001	MORRO BAY/CAYUCOS WWTP	MORRO BAY SD			9		9
3	247750	3 400105001	PASO ROBLES WWTP	PASO ROBLES, CITY OF			29	4	33
3	248519	3 400106001	PISMO BEACH WWTP	Pismo Beach City			147		147
3	251473	3 401001001	RAGGED POINT INN MOTEL	RAGGED POINT INN			22	3	25
3	252954	3 442004003	Davenport Cement Plant	Cemex USA			7		7
3	255337	3 350102001	SAN JUAN BAUTISTA WWTP	SAN JUAN BAUTISTA, CITY OF			8	2	10
3	255380	3 400107001	SAN LUIS OBISPO WWTP	SAN LUIS OBISPO, CITY OF			40		40
3	255462	3 400110001	SAN SIMEON WWTP	SAN SIMEON CSD			80	2	82
3	257887	3 400111001	SOUTH SAN LUIS OBISPO SD WWTP	SOUTH SAN LUIS OBISPO CO SD			2		2
3	259856	3 400401145	SYCAMORE MINERAL SPRINGS	SYCAMORE MINERAL SPRINGS				16	16
3	263251	3 430403188	TEST WELL DRILLING PROGRAM	GILROY, CITY OF			1		1
3	268996	3 272009001	UNI-KOOL ABBOTT ST	UNI-KOOL COMPANY			5		5
3	268997	3 272016001	UNI-KOOL SALINAS FACILTY	UNI-KOOL COMPANY			2		2
3	271872	3 440104001	WATSONVILLE WWTP	WATSONVILLE, CITY OF				1	1
3	271992	3 440505306	WELL-PICT BERRIES, INC.	WELL-PICT BERRIES, INC.			1		1
3	637513	3 400706389	SLO City Water Distribution System	SAN LUIS OBISPO, CITY OF				3	3
3	649245	3 270307105	Cal Water Stations 64, 67, 69, 40-01	CALIFORNIA WATER SERVICE			5	1	6
3 Total							705	100	805
4			Forest Lawn Memorial Park, Covina Hills	Forest Lawn Memorial Park			16		16
4	201972	4B197500192							
4	202421	4B196000242	328 Cloverdale Apartments	CWD Cloverdale II Associates			4		4

Facilities with MMP s					ADDRESSED AND IN PROGRESS	PENDING	Grand Total
REGION OFFICE	FACILITY	WDID	FACILITY NAME	AGENCY NAME			
4	202584	4B192594001	3M Pharmaceuticals	3M Co., EHS Operations	2		2
4	203373	4B196000003	550 South Hope Street Building	550 South Hope Street Associates	10		10
4	203650	4B196600151	76 Station #3768	ConocoPhillips Company	5		5
4	207259	4B191340001	Alameda Mid-Corridor Trench Pj	Alameda Corridor Transportation Authority	4		4
4	207266	4B192111006	Alamitos Generating Station	AES Alamitos LLC	29		29
4	207657	4A199002002	Amusement Park, Valencia	Six Flags Magic Mountain	325	1	326
4	207662	4A562442001	Anacapa Marine Services	Anacapa Marine Services	6		6
4	208078	4A567500001	Arundell Barranca	Ventura Co Watershed Protection District	16		16
4	208272	4B197500108	Avalon Encino	AvalonBay Communities Inc.		1	1
4	208276	4B190100001	Avalon WWTF	Avalon, City of	12		12
4	209940	4B196400066	BOC Gases - El Segundo	BOC Gases	7	2	9
4	210189	4B192208003	BP Wilmington Plant	BP Wilmington Calciner	6		6
4	211132	4B197600025	Bassett Wellfield	California Domestic Water Co	13		13
4	211481	4B196000371	Beverly Mercedes Place	Beverly Place, L.P.	76		76
4	211482	4B196100114	Beverly RO Treatment Plant	Beverly Hills City, Dept. of Public Works	8		8
4	211510	4B190107098	Big Rock Mesa Drainage Facility	Malibu City		3	3
4	211975	4B196000601	9601 Wilshire	Douglas Emmett, 2000, LLC		1	1
4	212135	4B190101001	Burbank WWRP	Burbank City DPW	29		29
4	216297	4B190800001	CSU, Long Beach, Pool, Etc	CSU Long Beach	14		14
4	216584	4B196600163	Calclean Inc. (Carson)	Calclean Inc.		1	1
4	216585	4B196600159	Calclean Inc. (Gardena)	Calclean Inc.		2	2
4	216599	4B196000427	California Credit Union	Glenborough LLC		103	103
4	216600	4B192454001	California Dairies Inc.	California Dairies Inc	2		2
4	216719	4A560100001	Camarillo WRP	Camarillo Sanitary District	144		144

Facilities with MMP s							
REGION					ADDRESSED AND IN PROGRESS	PENDING	Grand Total
OFFICE	FACILITY	WDID	FACILITY NAME	AGENCY NAME			
4		4A567500187	Camarillo WRP	Camarillo Sanitary District	60		60
4	216832	4A560106003	Camrosa WWRP	Camrosa Water District	2		2
4	217025	4B196000474	CarrAmerica Office Building	CarrAmerica Realty Corp.	9		9
4	217049	4B192010019	Carson Crude Oil Terminal	BP West Coast Product LLC		1	1
4	217059	4B192010008	BP Carson Refinery	BP West Coast Product LLC	16	25	41
4	217067	4B192238002	Carson Terminal	Kinder Morgan Liquids Terminal, LLC	25		25
4	217209	4A562022001	Cemex (Moorpark Plant)	Cemex Construction Materials LP	5		5
4	217317	4B196000514	Century Park Plaza	Douglas Emmett, Inc.	2		2
4	217321	4B196000408	Century Plaza Towers, Offices	One Hundred Towers LLC	1		1
4	217345	4B196800065	Cerro Metal Products	Cerro Metal Products Company		2	2
4	217352	4B196400064	Certified Alloy Products, Inc.	Certified Alloy Products, Inc.	3		3
4	217398	4B191309001	Port Hueneme Aquaculture Park	Stellar Biotechnologies, Inc	6		6
4	217766	4B198800069	Cerritos Corporate Yard	Cerritos City		4	4
4	217790	4B196000142	City Production Wells of Beverly Hills	Beverly Hills City, Dept. of Public Works		2	2
4	218820	4A561037001	Culligan Water	Harris Water Conditioning	48	1	49
4	221224	4B196800061	Delta Plant	Monterey Park City	2		2
4	221225	4B196800062	Delta Plant Well No. 5	Monterey Park City	1		1
4	221267	4B190138001	Dept of Water & Power	Pasadena, City of	2		2
4	221319	4B196000256	Detroit Apartments	Mantini Management, Inc.	26	2	28
4	221590	4A191142001	Drainage Benefit Assessment Areas 6 &18	Santa Clarita City	99		99
4	223425	4B192034001	Dayton Superior Specialty Chemical (Formerly Edoco)	Dayton Superior Corporation	18		18
4	223531	4B192111001	El Segundo Generating Station	El Segundo Power, L.L.C.	4		4
4	223583	4B192575001	Elixir Industries	Elixir Industries	3		3
4	223679	4A567500069	Emergency Dewatering	Santa Clarita City	4		4

Facilities with MMP s							ADDRESSED AND IN PROGRESS	PENDING	Grand Total
REGION OFFICE	FACILITY	WDID	FACILITY NAME	AGENCY NAME					
4	223799	4B196800006	Eric Realty, Inc.	Eric Realty Inc		61	1	62	
4	225672	4B190144001	Fairplex	Los Angeles County Fair, Hotel & Expo Complex		3		3	
4	225881	4A560101002	Fillmore WWTP	Fillmore City		161		161	
4	226037	4A197500025	Whittaker-Bermite Facility (Former)	Whittaker Corp		16		16	
4	226105	4A190115006	Foothill Feeder Power Plant	Metropolitan Water District of Southern California		11		11	
4	226200	4A566600191	Former ExxonMobil SS#7-2827	ExxonMobil Environmental Services Corp.		1		1	
4	226211	4B191070002	750 Garland, LLC	750 Garland, LLC		31	64	95	
4	226214	4B192623001	Former ITT Aerospace Controls	Home Depot USA Inc		3		3	
4	226230	4B191318001	Former Menasco Aerosystem Facility	Coltec Industries Inc.		3		3	
4	226271	4B196800033	Former Southland Oil Facility	DTSC		24		24	
4	226291	4B197500251	Former Unocal Station #6990	Chevron Environmental Management Company		1		1	
4	226294	4B196800038	Former Vopak USA Inc.	Univar USA Inc.		2		2	
4	226297	4B191311001	Former Western Fuel Oil	Pacific Refining Co.		1		1	
4	226298	4B196600167	World Oil Station #20 (former)	World Oil Marketing Co.		3		3	
4	226543	4B196600183	G & M Oil Co Station #57	G & M Oil Co.			4	4	
4	228697	4B196000350	Gateway East Office Bldg	Topa Management Corp.		5		5	
4	228856	4B192085002	Glass Container Div, Vernon	Owens-Brockway Glass Container		1		1	
4	229012	4B196400037	Goldmedal Plant	Golden State Water Company - San Dimas		1		1	
4	229057	4B196300092	Gould's Pumps, Inc.	Gould's Pumps, Inc.		3		3	
4	229130	4B196000135	Grand Promenade	G & K Management Co., Inc.		45	1	46	
4	229262	4B192047001	Catalina Pacific Concrete Co	Catalina Pacific Concrete Co.		8		8	
4	229285	4B196400029	Greg Avenue Power Plant	Metropolitan Water District of Southern California		1		1	

Facilities with MMP s						ADDRESSED AND IN PROGRESS	PENDING	Grand Total
REGION OFFICE	FACILITY	WDID	FACILITY NAME	AGENCY NAME				
4	231234	4B191083001	Harbor Associates	4201 Wilshire, LLC		6	6	
4	231239	4B190106046	Harbor G.S. - Marine Tank Farm	Los Angeles City DWP			8	
4	231242	4B193500004	Harbor Generating Station	Los Angeles City DWP		9	9	
4	231306	4B197500068	Harsu Gas Mart	Paramjit S. Judge		3	3	
4	231346	4B192187001	Hathaway Terminal Tank Farm	BP West Coast Product LLC		1	1	
4	231379	4B192557002	Northrop Grumman Corp-Hawthorne Site	TRW Inc.		1	1	
4	231394	4B193500002	Haynes Generating Station	Los Angeles City DWP		259	1	
4	231693	4A560112001	Hill Canyon WWTP	Thousand Oaks City		37	37	
4	231758	4B192128001	Hitco Carbon Composites Inc	Hitco Carbon Composites, Inc.		8	8	
4	231825	4B197500015	Hollyhills Drain Unit 8B-Ph 1	Los Angeles County DPW		2	2	
4	231891	4B196000332	Home Office Building	Mercury Casualty Company		3	3	
4	231911	4B191263001	Honeywell Inc.	Honeywell Inc.		24	24	
4	231978	4A567500012	Hueneme Drain/Road Culvert	Ventura Co Watershed Protection District		5	5	
4	232029	4B196000283	Huntley Drive Apartment	Fereidoun & Susan Daftary		1	1	
4	232060	4B191285001	Hydrogen Plant & Related Facility	Air Product & Chemicals		23	23	
4	232882	4B192113018	Inglewood Oil Field, Baldwin Hills	Plains Exploration & Production Co		1	1	
4	232962	4B196600103	Interstate Brands	Interstate Brands Corp		2	1	
4	234156	4B190107013	Joint Water Pollution Control Plant	Los Angeles County Sanitation Districts		10	10	
4	235313	4B192389001	Los Angeles, California Plant	Kaiser Aluminum & Chemical Products, LLC		2	2	
4	235732	4B192121001	Los Angeles Refinery	Shell Oil Product US		32	32	
4	236009	4B192131026	LA Refinery, Carson Plant	ConocoPhillips Company		1	1	
4	236061	4B198800070	Route I-105 Dewatering System - Garfield, Downey, Ardis Pump	CA Dept of Transportation District 7 R4		6	6	
							34	
							34	

Facilities with MMP s						ADDRESSED AND IN PROGRESS	PENDING	Grand Total
REGION OFFICE	FACILITY	WDID	FACILITY NAME	AGENCY NAME				
			Stations					
4	238121	4B197500072	Laurel Way Project	Manoucheher Benjy		3	3	
4	238149	4B196800059	Laxfuel Corporation	Laxfuel Corporation		3	3	
4	238545	4B190105019	Long Beach Desalination Research Facility	Long Beach Water Dept		22	22	
4	238560	4B192326003	Long Beach Refinery - Rainfall	Edington Oil Co.		5	3	
4	238562	4B190107014	Long Beach WWRP	Los Angeles County Sanitation Districts		2	2	
4	238604	4B191019001	Sterling Ambassador Towers	Korean World Tower			12	
4				Donald T. Sterling Corporation			29	
4	238615	4B192238001	Los Angeles Harbor Terminal	Kinder Morgan Liquids Terminal, LLC		1	1	
4	238617	4B192131013	Los Angeles Lubricants Plant	ConocoPhillips Company		58	58	
4	238633	4B190106036	Los Angeles Zoo Griffith Park	Los Angeles City Parks & Recreation		37	37	
4	238646	4B190107015	Los Coyotes WWRP	Los Angeles County Sanitation Districts		40	40	
4	239164	4B196600197	Magic Gas & Auto Service	Aramis Vartanian Mr. & Mrs.		2	2	
4	242194	4B196000546	Mammoth Apartments	Mammoth Apartments, LLC		69	69	
4	242209	4A562019001	Mandalay Generating Station	Reliant Energy Mandalay, LLC		65	65	
4	242264	4B196000358	Maple Plaza	Tishman Speyer Properties LP		40	40	
4	242279	4B196000077	Marathon Office Building	Paramount Pictures		1	1	
4	242338	4B192023002	Marine Terminal, Berth 164	ULTRAMAR, Inc. - Hanford		5	1	
4	242340	4B192010015	Marine Terminal 1,Berth 121,LB	BP West Coast Product LLC		1	1	
4	242342	4B192197001	Marine Terminal, Berth 83, Long Beach	Petro Diamond Terminal Company		3	3	
4	242820	4B192078001	Metropolitan Stevedore Co.	Metropolitan Stevedore		3	3	
4	242891	4B196600193	Midway Ford	Hankey Investment Company		8	2	
4	243184	4B192079026	Mobil SS#18-LDM	ExxonMobil Oil Corporation		2	2	

Facilities with MMP s					ADDRESSED AND IN PROGRESS	PENDING	Grand Total
REGION OFFICE	FACILITY	WDID	FACILITY NAME	AGENCY NAME			
4	243241	4B196100116	Mole-Richardson Company	Mole-Richardson Company		7	7
4	243419	4B192108009	Mormon Island Marine Terminal	Shell Oil Product US	8	1	9
4	243459	4B192543001	Morton Salt - Long Beach	Morton Salt/Rohm and Haas	80		80
4	243558	4B197500060	Mr. Auto	Mr. Auto	7		7
4	243739	4B196000339	Museum Terrace Apartment	Goldrich & Kest Management Co.	5		5
4	245106	4B196000362	6100 Wilshire	KW Funds-6100 Wilshire, LLC	4		4
4	245135	4B196800012	San Fernando Road Site	Newlowe Properties LLC c/o Hazard Management Consulting	22		22
4	245294	4B191112001	North Crescent Realty V, LLC	Platinum Paradigm Properties, LLC		11	11
4	245437	4B197500065	Northwest Gateway Apartments	Meta Housing Corporation		5	5
4	245451	4B192597001	Norwalk Pump Station	Kinder Morgan SFPP, L.P.	5	25	30
4	245536	4B197500027	O'Neil Data Systems	Citigroup Inc.		8	8
4	246573	4B191067001	Office Building	1801 Avenue of the Stars LP	1		1
4	246586	4B197500033	Office Depot	Snyder-Masselin Venture L.P.	7	2	9
4	246601	4B192178001	Oil Drum Recycling, South Gate	Consolidated Drum Reconditioning	3		3
4	246614	4A566300096	Ojai System	Golden State Water Company - San Dimas	8		8
4	246616	4A560104001	Ojai Valley WWTP	Ojai Valley Sanitary District	33		33
4	246700	4A561334001	Oly Mandalay Bay Sea Bridge	DR Horton Los Angeles Holding Co	129		129
4	246710	4B190106051	Olympic Tank Farm Skim Pond	Ultramar, Inc.	6		6
4	246726	4B196000193	One California Plaza	Maguire Properties	7	2	9
4	246823	4A562019002	Ormond Beach Generating Station	Reliant Energy Mandalay, LLC	2		2
4	249404	4A562443001	950 Rancho Conejo Blvd, Newbury Park	Emery Air Freight		2	2
4				United Parcel Service	6	87	93
4	249637	4B196000333	Page Museum @ La Brea Tar Pits	Page Museum @ La Brea Tar Pits	5		5
4	249672	4B196600149	Palms Service Center	Los Angeles City DWP		4	4

Facilities with MMP s							ADDRESSED AND IN PROGRESS	PENDING	Grand Total
REGION OFFICE	FACILITY	WDID	FACILITY NAME	AGENCY NAME					
4	249797	4B192348001	Paramount Refinery	Paramount Petroleum Corp			27	27	
4	249957	4B196100055	Park La Brea, Parcel A	Casden Park La Brea A LLC			6	6	
4	250161	4B192111010	Pebble Beach Desalination Plant	Southern California Edison			2	2	
4	250274	4B199019001	Marine Terminal, Wilmington	VOPAK Terminal Los Angeles Inc			1	1	
4	250363	4B192127001	Pico Rivera Facility	Lubricating Specialties Company			32	32	
4	250542	4B192533001	Plaskolite West Inc.	Plaskolite West, Inc.			2	2	
4	250556	4B196800049	Playa Vista Site	Playa Capital Co LLC			3	3	
4	250559	4B196000313	Plaza 3, Warner Center	Douglas Emmett Management LLC			7	7	
4	250560	4B196000389	Plaza 6, Warner Center	Douglas Emmett Management LLC				19	
4	250633	4A561058001	Pneumo Abex Aerospace Corp.	Pneumo Abex Aerospace, Inc.			3	3	
4	250700	4B190107019	Pomona WWRP	Los Angeles County Sanitation Districts				4	
4				(blank)				7	
4	250824	4B192140001	Praxair, Wilmington	Praxair Inc			91	91	
4	251061	4A562432001	Puretec Harris Industrial Water	Culligan Industrial Water Trea			1	1	
4	251069	4A192000001	Pvc-Pva Copolymer Mfg, Saugus	Keysor-Century Corp			1	1	
4	252960	4B191086001	RMR Properties	RMR Properties			9	9	
4	253472	4B196000409	RP 120, LLC	RP 120, LLC			14	14	
4	253658	4B196400060	Radisson Hotel at Los Angeles Airport	Harp Group c/o Radisson Hotel at Los Angeles Airport			86	86	
4	253949	4B192090001	Redman Equipment & Mfg Co	Redman Equipment & Mfg Co			7	7	
4	253953	4B192111003	Redondo Generating Station	AES Redondo Beach, LLC			42	42	
4	253965	4A567500002	Redwood Trunk Sewer Project	Oxnard City			21	21	
4	254054	4B196000336	Reno Apartments	Park Encino, LLC			11	11	
4	254135	4B191297001	Hexion Specialty Chemicals, Inc. (formerly Resolution Specialty Materials)	Hexion Specialty Chemicals, Inc.			45	45	

Facilities with MMP s							
REGION					ADDRESSED AND IN PROGRESS	PENDING	Grand Total
OFFICE	FACILITY	WDID	FACILITY NAME	AGENCY NAME			
4	254691	4B196000504	Route I-10 Pavement Rehab. Project	CA Dept of Transportation District 7 R4		22	22
4	254703	4B191106001	Royal Catering, El Monte	Royal Catering	30		30
4	254905	4B196000053	S. Mark Taper Foundation Transplant Center	St. Vincent Hospital	2		2
4	256069	4B198100004	Massinger Plant	Golden State Water Company - San Dimas		2	2
4	260156	4B190107020	San Jose Creek WWRP	Los Angeles County Sanitation Districts	57		57
4	260234	4B192124001	San Pedro Marine Terminal	Kinder Morgan Liquids Terminal, LLC	23		23
4	260375	4B192162001	Santa Fe Springs Refinery	Golden West Refining Company	9		9
4	260400	4B196000129	Santa Monica Gateway	CB Richard Ellis	1		1
4	260420	4A560108001	Santa Paula WWRP	Santa Paula City	2,883	17	2,900
4	260429	4A562013002	Santa Susana Field Laboratory	The Boeing Company	93	31	124
4	260494	4A190107021	Saugus WWRP	Los Angeles County Sanitation Districts	68	1	69
4	260531	4B193500003	Scattergood Generating Station	Los Angeles City DWP	49		49
4	260662	4B190143001	Seaside Lagoon	Redondo Beach City	66		66
4	260702	4B192515004	Segments 1,2A,2B,3 Operations	Los Angeles County Metropolitan Transportation Authority	28		28
4	261006	4B196000144	Sherman Oaks Branch	Washington Mutual	8		8
4	261149	4B196400009	Sierracin/Sylmar Corp.	Sierracin/Sylmar Corp.	20		20
4	261156	4B196600025	Signal Hill Terminal (Groundwater remediation)	Shell Oil Product US	1	2	3
4	261253	4A560110001	Simi Valley WWRP	Simi Valley City	37		37
4	261343	4B196000356	Site "A" South Parking Structure	Beverly Hills City, Dept. of Public Works	9		9
4	261411	4A562074001	Skyworks Solutions, Inc.	Skyworks Solutions, Inc.	19		19

Facilities with MMP s							ADDRESSED AND IN PROGRESS	PENDING	Grand Total
REGION OFFICE	FACILITY	WDID	FACILITY NAME	AGENCY NAME					
4	261483	4A569002001	Soft Water Sales & Service, Ventura	Rayne Water Systems of Ventura			11	11	
4	261612	4B191300001	South Coulter Water Treatment	Lincoln Avenue Water Co.			3	3	
4	261701	4B191035001	Fish Harbor Laboratory	Southern California Marine Institute			1	1	
4	261744	4B192545001	Southwest Grease Business	Dial Corp, The			8	8	
4	261750	4B192079001	Southwest Terminal Area I	ExxonMobil Oil Corporation			1	1	
4	261758	4B192557003	Space Park Facility	Northrop Grumman Sp & Msn Inc.			3	3	
4	262008	4B191168001	State Hospital Cogeneration Plant	Wheelabrator Norwalk Energy Co			82	82	
4	262057	4A565022002	Stellar Biotechnologies, Inc	Stellar Biotechnologies, Inc			23	23	
4	262332	4B192143001	Sulfur Pelletizing, Wilmington	California Sulphur Co			1	4	5
4	266919	4B190106007	Tank A,B,C,D Area, Haynes Plant, Long Beach	Los Angeles City DWP			13	13	
4	266920	4B190106049	Tank E Area, Haynes Plant, Long Beach	Los Angeles City DWP			5	5	
4	266921	4B190106050	Tank F,G Area, Haynes Plant, Long Beach	Los Angeles City DWP			6	6	
4	266922	4B190106042	Tank H, J Area, Haynes Plant, Long Beach	Los Angeles City DWP			7	7	
4	266940	4B190104001	Tapia WRF	Las Virgenes MWD			7	7	
4	267130	4B190106005	Terminal Island WWTP	Los Angeles City, Bureau of Sanitation			1	1	
4	267175	4B197500064	Tesoro-La Mirada Site	TESORO PETROLEUM COMPANIES, INC.			4	4	
4	267428	4A562397002	The Talley Site, Newbury Park	Teleflex Inc.			3	1	4
4	267549	4B196000388	Ticketmaster Building	InterActive Corp.			3	3	
4	267571	4B190106004	Donald Tillman WWRP	Los Angeles City, Bureau of Sanitation			2	2	
4	267655	4B192079002	Torrance Refinery	ExxonMobil Oil Corporation			7	7	

Facilities with MMP s							ADDRESSED AND IN PROGRESS	PENDING	Grand Total
REGION OFFICE	FACILITY	WDID	FACILITY NAME	AGENCY NAME					
4	267724	4A567500058	Tract No 5353 Townhomes	KB Home			102	102	
4	268611	4B192526001	Treatment Plant #1	Covina Irrigating Co.		2		2	
4	268662	4B196000398	Trillium - 6320 Canoga Avenue	Douglas Emmett, Inc.		14		14	
4	268746	4B190106099	Tunnel # 105	Los Angeles City DWP		4		4	
4	268748	4B190106061	Tunnel No. 104	Los Angeles City DWP		1		1	
4	268843	4B196000373	Two Rodeo Associates	Rodeo Owner Corp.		13		13	
4	268910	4B191287001	U.S. Gypsum Co.	U.S. Gypsum Co.		11		11	
4	269697	4B196100121	United - Rapid Gas Station #19	United Oil Company		14		14	
4	269778	4B197500053	Universal City Apartments Holding LLC	Trammell Crow Residential		6	1	7	
4	269780	4B199017001	Universal City Studios	MCA / Universal City Studios		86		86	
4	270777	4B199019002	VOPAK Terminal Los Angeles Inc.	VOPAK Terminal Los Angeles Inc		33		33	
4	270822	4A190107086	Val Verde Co. Park Swim Pool	Los Angeles Cnty, Parks & Rec		12		12	
4	270836	4A192332001	Valencia Facility	HR Textron Inc.		3		3	
4	270849	4A190107023	Valencia WWRP	Los Angeles County Sanitation Districts		56		56	
4	271054	4A560107001	Ventura WRF	City of Ventura		234		234	
4	271216	4B196000402	Villa Marina East V HOA, Villa Marina East V Condominiums	Horizon Management Company			8	8	
4	271217	4B196100069	Villa Marina Market Place	M & H Property Management		4		4	
4	271445	4B197500184	Vista Hermosa Project	Los Angeles Unified School District		8		8	
4	271483	4B192525001	Voi-Shan Redondo Beach	Fairchild Holding Corp.		4		4	
4	271490	4B192614001	Vopak Terminal Long Beach Inc.	Vopak Terminal Long Beach Inc		8		8	
4	273372	4B196000076	Walt Disney Hall Parking	LA Co Parking Authority		14		14	
4	273407	4B196100001	21300 Victory Boulevard, LLC	Douglas Emmett, Inc.			4	4	
4	273575	4B196000437	Well #11 & #12	Walnut Park Mutual Water Co.		1		1	
4	273602	4B197600043	Well No. 7	Signal Hill City			8	8	

Facilities with MMP s					ADDRESSED AND IN PROGRESS	PENDING	Grand Total
REGION OFFICE	FACILITY	WDID	FACILITY NAME	AGENCY NAME			
4	273682	4B196000411	West Coast Barrier Project 7	Los Angeles Cnty DPW		1	1
4	273827	4B197500021	Westlake Village Hotel & Spa	Dole Food Co Inc	11	1	12
4	273830	4A567600031	Westlake Well	Westlake Lake Management Association	86	83	169
4	273858	4A562445001	Westport at Mandalay Bay	LB/L SunCal Mandalay, LLC	6		6
4	273899	4B192407001	Westway Terminal-Berths 70-71	Westway Terminal Company	8		8
4	273980	4B190107016	Whittier Narrows WWRP	Los Angeles County Sanitation Districts	7		7
4	274044	4A190805002	William E Warne Power Plant	Ca Dept of Water Resources	33		33
4	274092	4B192263001	Wilmington Marine Terminal	Shore Terminal LLC		1	1
4	274093	4B192129002	Wilmington Plant	US Borax Inc.	4		4
4	274096	4B192023001	Wilmington and Terminal Island	Tidelands Oil Production Co.	21		21
4	274103	4B196000421	Wilshire Doheny Building	Casden Properties, LLC		9	9
4	274107	4B196000355	Wilshire Rodeo Plaza	Trea Wilshire Rodeo, LLC	7		7
4	274110	4B196000239	Wilshire-Highland Building	Jamison Properties	11		11
4	274112	4B196000620	Wilshire-San Vicente Plaza	Douglas Emmett, Inc.	2		2
4	607165	4A567500086	Santa Clara River Groins Upgrade Phase 1	Ventura Cnty Watershed Protection Dist	5		5
4	628946	4A567600061	Well No. 6	Crestview Mutual Water Company		8	8
4	629180	4A567500100	Segment C of Townhomes at the River	KB Home		92	92
4	629227	4A567500091	Santa Paula Airport & Santa Clara River	Ventura Cnty Watershed Protection Dist	1		1
4	629232	4A567500097	Segment D of Townhomes at the River	KB Home		93	93
4	630088	4B197600047	Glorietta Well Nos 3, 4, 6 & Verdugo Well Nos A & B	Glendale City		7	7
4	630266	4A567500186	Segment B of Townhomes at the River, Tract No. 5353	KB Home		90	90

Facilities with MMP s							ADDRESSED AND IN PROGRESS	PENDING	Grand Total
REGION OFFICE	FACILITY	WDID	FACILITY NAME	AGENCY NAME					
4	630273	4B197600048	Arbor Yard Well No. 27	Lakewood City		1		1	
4	630282	4B198000007	Rio Vista Water Treatment Plant	Castaic Lake Water Agency			3	3	
4	632594	4B197600050	Dominguez Gap Barrier Project- Quarterly Monitoring Wells Sampling Event	Water Replenishment District of Southern California		1		1	
4	633078	4B197500075	Blossom Plaza Project	Bond Chinatown Ventures, LLC			101	101	
4	633196	4B196800068	Groundwater Treatment Plant	Alhambra City Dept of Utilities			68	68	
4	633747	4B197600051	Sepulveda Well No. 1 & 2	Water Replenishment District of Southern California		77		77	
4	634733	4B197500082	Archstone 2000 Main Project	Archstone Smith Operating Trust			8	8	
4	638139	4B197500152	Wilshire Le Doux Medical Plaza Project	Wilshire Le Doux Medical Plaza LP		7		7	
4	638814	4A566600200	GP Resources Facility (Former)	Calclean Inc.		1		1	
4	641174	4B198100008	Doty Wells Site Filtration Unit	Golden State Water Company - San Dimas		3		3	
4	641259	4A197500172	Segment C - Magic Mountain Parkway/I-5 Outlet Project	Santa Clarita City		7		7	
4	641810	4A197500173	Segment D - Magic Mountain Parkway @ I-5 Outlet Project	Santa Clarita City		2		2	
4	641815	4B197600060	Well No. 9	Signal Hill City DPW			38	38	
4	642153	4B197500191	110-105 Freeway Interchange Storm Water Management Project	Island Environmental Services		1		1	
4	646974	4B197500208	One World Trade Center	Legacy Partners II LB World Trade, LLC c/o ENV America Inc.		12		12	
4	649805	4B197600074	Well 19C	Park Water Company			14	14	
4	650015	4B197600072	Well # 5 and 6	Tract 180 Water Company			34	34	
4	653233	4A567500235	Emma Wood State Beach Crude Oil Pipeline Excavation Project	Venoco Inc.		2		2	
4	708572	4A567500255	Sespe Creek Levee 5 Construction	Fillmore City			1	1	

Facilities with MMP s						ADDRESSED AND IN PROGRESS	PENDING	Grand Total
REGION OFFICE	FACILITY	WDID	FACILITY NAME Project	AGENCY NAME				
4	711328	4B197500273	California 60 Project	Dan Frederickson		1	1	
4 Total					7,442	1,354	8,796	
5F	208630	5C102009007	BALSAM MEADOWS HYDRO PROJ	Southern California Edison	1		1	
5F	209509	5C102009001	BIG CREEK POWERHOUSE NO 1	Southern California Edison	7		7	
5F	213562	5D152013001	CAWELO RESERVOIR B	Cawelo Water District	3		3	
5F	214652	5C240108001	MERCED WWTF	MERCED, CITY OF	34		34	
5F	228035	5C102029001	GROUNDWATER REMEDIATION SYSTEM	THE VENDO COMPANY	7		7	
5F	235247	5D542010001	KRAFT FOODS VISALIA PLANT	KRAFT FOODS, INC	19		19	
5F	240374	5C240804001	MERCED RIVER FISH HATCHERY	Ca Dept of Fish & Game Fresno	1		1	
5F	241563	5D152028001	MOUNT POSO, POSCAL PAC VILLARD	GRIFFIN RESOURCES	9		9	
5F	249457	5D102120001	PURITY OIL SALES SITE	SECOR INTERNATIONAL INC	2		2	
5F				CHEVRONTEXACO, INCORPORATED - R5F	1		1	
5F	253156	5D542095001	GROUNDWATER CLEANUP SYSTEM	ROCKWELL INTERNATIONAL	3		3	
5F	255315	5D100804002	SAN JOAQUIN FISH HATCHERY	Ca Dept of Fish & Game Fresno	4		4	
5F	255546	5D102010001	SANGER PLANT	WALTER BAUN	2		2	
5F	264560	5D541067001	TIPTON MILK & BUTTER PROC FAC	CALIFORNIA DAIRIES, INC	284		284	
5F	266540	5C242001001	TROUT REARING FACILITY	CALAVERAS TROUT FARM, INC	18		18	
5F	270646	5D542001002	VISALIA CLEANUP-SYNDERGENERAL	AAF-MCQUAY, INC	1		1	
5F	270651	5D541035001	VISALIA MEDICAL CLINIC	VISALIA MEDICAL CLINIC, INC	6		6	
5F	273105	5C240100001	ATWATER WWTF	ATWATER, CITY OF	22	3	25	
5F	273161	5D152037001	BEAR VALLEY CSD WWTF	BEAR VALLEY CSD	5		5	
5F	273180	5D100124001	MALAGA CWD WWTF	MALAGA CWD	379		379	
5F	273182	5C240110001	PLANADA WWTF	PLANADA CSD	165		165	
5F	273191	5D150118002	STALLION SPRINGS WWTF	STALLION SPRINGS CSD	6		6	

Facilities with MMP s						ADDRESSED AND IN PROGRESS	PENDING	Grand Total
REGION OFFICE	FACILITY	WDID	FACILITY NAME	AGENCY NAME				
5F Total						979	3	982
5R	205741	5A450100001	Anderson WPCP	Anderson City	1		1	
5R	209551	5A040100001	Biggs WWTP	Biggs, City Of	30		30	
5R	214198	5A322000001	Collins Pine Chester Sawmill	Collins Pine Company	5		5	
5R	214199	5A320100001	Chester STP	Chester PUD	1		1	
5R	214802	5A450103001	Clear Creek WWTP	Redding City	3		3	
5R	219530	5A321010001	Delleker WWTP	Grizzly Lake Resort Imp Dist	3		3	
5R	248936	5A320102001	Portola WWTP	Portola City	26		26	
5R	251217	5A320103001	Quincy WWTP & Collection System	Quincy Community Services District	12		12	
5R	252119	5A520101001	Red Bluff WW Reclamation Plant	Red Bluff City	4		4	
5R	256627	5A450105001	Shasta Lake WWTF	Shasta Lake City		1	1	
5R	256964	5A452015001	Sierra Pacific Industries Burney Division	Sierra Pacific Industries Burney R5R	3		3	
5R	256965	5A321016001	Sierra Pacific Industries Quincy Division Sawmill	Sierra Pacific Industries Quincy	3	1	4	
5R	271805	5A040102001	Chico Water Pollution Control Plant	City of Chico	15		15	
5R	272704	5A110101001	Willows WWTP	Willows, City of	60		60	
5R Total						166	2	168
5S	205918	5B072039001	ANTIOCH PULP & PAPER MILL	Gaylord Container Corp	14		14	
5S	206730	5A31NP00001	AUBURN RANCHERIA CASINO WWTP	United Auburn Indian Community	159		159	
5S	206733	5A310100001	AUBURN WWTP	Auburn City	13	1	14	
5S	210322	5B070101001	Brentwood WWTP	Brentwood City	93		93	
5S	212559	5B392095001	CALAMCO - STOCKTON TERMINAL	CALIF AMMONIA COMPANY	7		7	
5S	212845	5B390114001	Camanche Dam Power House	East Bay MUD	1		1	
5S	213432	5A290107002	Cascade Shores WWTP	Nevada Cnty SD No. 1	167	24	191	
5S	213883	5A340802001	CENTRAL HEATING/COOLING FAC	Ca Dept of General Services Real Estate Div	15		15	

Facilities with MMP s							ADDRESSED AND IN PROGRESS	PENDING	Grand Total
REGION OFFICE	FACILITY	WDID	FACILITY NAME	AGENCY NAME					
5S	214642	5B030103001	City of Jackson WWTP	Jackson City			69	69	
5S	214647	5A510100001	Live Oak City WWTP	Live Oak City			317	17	334
5S	215106	5A310101001	Colfax WWTP	Colfax City			186	10	196
5S	215225	5A060101001	COLUSA WWTP	COLUSA, CITY OF			123	23	146
5S	216285	5B390115001	CSA 31 - Flag City	San Joaquin Cnty			23		23
5S	219223	5A570100001	Davis WWTP	Davis City			7	1	8
5S	219398	5B090102001	DEER CREEK WWTP	El Dorado ID			2		2
5S	219701	5B390100001	Deuel Vocational Institution	CA Dept of Corrections			60		60
5S	220315	5B070105003	DISCOVERY BAY TRMT PLANT	Discovery Bay Town			94	4	98
5S	220548	5A290105001	DONNER SUMMIT WWTP	DONNER SUMMIT PUBLIC UTILITY			62		62
5S	220768	5A310106001	Dry Creek WWTP	Roseville City			23		23
5S	222057	5A480105002	Easterly WWTP	Vacaville City			61		61
5S	222651	5A48NP00001	ELMIRA REMEDIATION PROJECT	KINDER MORGAN ENERGY PTNRS,LP (5S)			10	2	12
5S	225205	5A48NP00004	FOX RD PIPELINE RELEASE SITE	KINDER MORGAN ENERGY PTNRS,LP (5S)			3		3
5S	226690	5B340101001	Galt SD	Galt City			33	59	92
5S	227818	5A290100001	Grass Valley STP	Grass Valley City			10	3	13
5S	227844	5C500117001	Grayson Park Well No.295	Modesto City			15		15
5S	228578	5B072050003	GWF Power Systems, Site IV	GWF Power Systems, L.P.			5		5
5S	229595	5A090100001	Hangtown Creek Water Reclamation Facility	Placerville City			84		84
5S	230140	5B39NP00035	HERMAN & HELENS MARINA	HERMAN & HELENS MARINA			1		1
5S	230167	5C502003001	HERSHEY CHOCOLATE USA, OAKDALE	HERSHEY FOODS CORP			12		12
5S	230584	5B398000001	HOLT GROUND WATER RECOVERY	KINDER MORGAN ENERGY PTNRS,LP (5S)			13		13
5S	230883	5A572002001	HUNT-WESSON, INC.	HUNT-WESSON, INC.			6		6
5S	232546	5A342000006	Interim Ground WTP	Aerojet General Corp			6		6

Facilities with MMP s							ADDRESSED AND IN PROGRESS	PENDING	Grand Total
REGION OFFICE	FACILITY	WDID	FACILITY NAME	AGENCY NAME					
5S	232757	5B39NP00034	IVANO LANE	Stockton City			1	1	
5S	234980	5A340311002	Kiefer Landfill GW Extraction & Treatment Plant	Sacramento Cnty Solid Waste Management			1	1	
5S	236236	5A290104003	Lake of the Pines WWTP	Nevada Cnty SD No. 1			37	37	
5S	236292	5A290104001	LAKE WILDWOOD WWTP	Nevada Cnty SD No. 1			89	89	
5S	237054	5B391080001	LINCOLN VILLAGE CTR GWT SYSTEM	LINCOLN CENTER ENV REMED TRUST			6	6	
5S	237060	5A580100002	Linda Cnty Water District WWTP	Linda Cnty Water District			12	12	
5S	239339	5B392082001	Oakwood Lake Subdivision Mining Reclamation Project, Manteca	BROWN SAND, INC.			21	1	22
5S	239343	5B390104001	Manteca WW Quality Control Fac	Manteca City			225		225
5S	239601	5B392058001	Marley Cooling Tower Company Stockton Facility	SPX Corp.			11	4	15
5S	239874	5A060102001	MAXWELL PUD WWTF	Maxwell PUD			568	5	573
5S	241140	5C500114003	MODESTO ID REGIONAL WTP	Modesto ID				1	1
5S	241146	5C500102001	Modesto Water Quality Ctrl Fac	Modesto City			1		1
5S	241195	5B390800001	MOKELUMNE RIVER FISH HATCHERY	CA Dept of Fish & Game Nimbus				1	1
5S	241598	5B391078003	Mountain House WWTP - 1	Mountain House CSD			1	1	2
5S	244141	5A290101001	Nevada City WWTP	Nevada City			24	7	31
5S	244354	5A340801001	NIMBUS HATCHERY	CA Dept of Fish & Game Nimbus			10		10
5S	245949	5A580102001	OLIVEHURST WWTP	OLIVEHURST PUD			47		47
5S	248586	5A310104007	Placer Cnty SMD No 1 WWTP	Placer Cnty Dept Of Facility Services			21	3	24
5S	248587	5A310104018	Placer Cnty SMD No 3	Placer Cnty Dept Of Facility Services			46		46
5S	248706	5A310106007	Pleasant Grove WWTP	Roseville City			64		64
5S	249256	5A342004001	PROCTER & GAMBLE CO WWTP	PROCTER AND GAMBLE COMPANY			6		6
5S	252771	5A480104001	Rio Vista (Main Beach) WWTF	Rio Vista City			106		106
5S	252936	5A171041001	RIVIERA WEST WATER SUPPLY TP	RIVIERA WEST MUTUAL WATER CO			1,314		1,314
5S	254925	5A310104011	SA NO 28, ZONE NO.6	Placer Cnty Dept Of Facility Services			90		90

Facilities with MMP s							
REGION					ADDRESSED AND IN PROGRESS	PENDING	Grand Total
OFFICE	FACILITY	WDID	FACILITY NAME	AGENCY NAME			
5S	254973	5A34NP00004	SACRAMENTO INTERNATIONAL AIRPT	Sacramento Cnty Airport System	28		28
5S	254981	5A340108002	Sacramento Regional WWTP	Sacramento Regional CSD	17		17
5S	255180	5B050103001	SAN ANDREAS WWTF	San Andreas Sanitary District	13	3	16
5S	256919	5C550801002	Sierra Conservation Center WTP (NPDES)	CA Dept of Corrections	30		30
5S	256968	5A312001001	SIERRA PLANT	FORMICA CORPORATION	14		14
5S	257308	5A462023001	SIXTEEN TO ONE MINE	ORIGINAL SIXTEEN TO ONE MINE		5	5
5S	258543	5A340805001	State Printing & Warehouses	Ca Dept of General Services Real Estate Div	46	2	48
5S	258739	5B390107001	Stockton STP-Main Plant	Stockton City	5		5
5S	266223	5B390108001	Tracy WWTP	Tracy City	51	27	78
5S	266439	5A480108001	Trilogy WWTP/Northwest WWTP	Rio Vista City	362		362
5S	266737	5C500108001	Turlock WWTP	Turlock City	54		54
5S	268722	5B34NP00009	Tsar Nicoulai Sturgeon Farm	Tsar Nicoulai Caviar LLC	1	1	2
5S	268926	5A570800001	UC DAVIS MAIN STP	UC DAVIS	26		26
5S	271634	5A340107010	WALNUT GROVE WWTP (CSD1)	SACRAMENTO REGIONAL CSD-ELK GV		1	1
5S	272122	5B570103001	West Sacramento STP	West Sacramento City	69	5	74
5S	272353	5B092006001	Wetsel Oviatt Lumber Mill	Wetsel Oviatt Lumber Company	6		6
5S	272444	5B390103002	White Slough Water Pollution Control Facility	Lodi City	17	5	22
5S	272631	5A060103001	Williams WWTP	Williams City	707	2	709
5S	272960	5A570105001	WOODLAND WWTP	Woodland City	3		3
5S	274556	5A510101001	Yuba City WWTF	Yuba City	31		31
5S Total					5,875	218	6,093
6A	259689	6A181554001	SUSANVILLE CSD	Susanville Consol SD		5	5
6A	272804	6A180045901	WINEAGLE DEV. GEOTHERMAL PROJ	WINEAGLE DEVELOPERS		1	1
6A Total						6	6

Facilities with MMP s							ADDRESSED AND IN PROGRESS	PENDING	Grand Total
REGION OFFICE	FACILITY	WDID	FACILITY NAME	AGENCY NAME					
6B	205231	6B269907002	ALPERS TROUT LLC	ALPERS TROUT LLC		5		5	
6B	230727	6B260801001	HOT CREEK HATCHERY NPDES	Ca Dept of Fish & Game Region 6			33	33	
6B	270419	6B360109001	VICTOR VALLEY MUNI WTP	Victor Valley Wastewater Reclamation Authority		75	28	103	
6B Total						80	61	141	
7	210272	7A130100011	Brawley City WWTP	Brawley City		154	8	162	
7	212589	7A130101011	CALEXICO CITY WWTP	Calexico City		12	3	15	
7	212739	7A130102041	CALIPATRIA CITY WWTP	CALIPATRIA CITY		77	1	78	
7	213850	7A131337001	CA DEPT OF CORRECTIONS CENTINELA WWTP	CA Dept of Corrections		31	2	33	
7	214933	7A330104012	Coachella SD WWTP	Coachella SD		257	7	264	
7	215925	7A131001011	Country Life MHPRV Asset Partners LP WWTP	Ralph Beatty			9	9	
7	215961	7A132160001	HEBER GEOTHERMAL FACILITY	ORMAT NEVADA, INC.		35		35	
7	215962	7A132210001	SECOND IMPERIAL GEOTHERMAL FACILITY	Ormat Nevada Inc			1	1	
7				ORMAT NEVADA, INC.		12	11	23	
7	219146	7A131057011	Peter M Ormand Date Gardens MHP	Peter M. Ormand			25	25	
7	222402	7A130128003	Imperial ID El Centro GS	Imperial ID		3	3	6	
7	222407	7A130103011	El Centro City WWTP	El Centro City		19	1	20	
7	229967	7A130104011	Heber PUD WWTP	Heber PUD		17	1	18	
7	230588	7A130105011	Holtville City WWTP	Holtville City		18		18	
7	232216	7A130128015	IMPERIAL ID GRASS CARP HATCHERY	Imperial ID		8	4	12	
7	232259	7A130113011	Imperial CCD WWTP	Imperial CCD		3	1	4	
7	232297	7A130106011	Imperial City WWTP	Imperial City		25	12	37	
7	239975	7A130114011	McCabe USD WWTP	McCabe USD		5	51	56	
7	244348	7A130109011	Niland SD WWTP	Niland SD		96	12	108	
7	256217	7A130111013	SEELEY CWD WWTP	Seeley Cnty WD		77	5	82	

Facilities with MMP s						ADDRESSED AND IN PROGRESS	PENDING	Grand Total
REGION OFFICE	FACILITY	WDID	FACILITY NAME	AGENCY NAME				
7	270096	7A330122021	Valley SD WWTP	Valley SD	2	7	9	
7	272291	7A130112012	WESTMORLAND CITY WWTP	Westmorland City	8	38	46	
7 Total					859	202	1,061	
8	219865	8 302448001	DEWATERING,GENERAL	Irvine Community Development Co		1	1	
8	259018	8 302741001	Adams Steel Salvage	ADAMS STEEL	1		1	
8	259067	8 362023002	STORM,MULBERRY DITCH & SAN SEV	California Steel Industries, Inc		13	13	
8	259149	8 360112001	Rialto City STP	Rialto City	35		35	
8	259156	8 302006002	Michelson Wastewater Reclamation Facility	Irvine Ranch Water District	4		4	
8	259161	8 362222001	Henry N. Wochholz WWRF	Yucaipa Valley Water Dist	435		435	
8	259165	8 360104004	IEUA Regional Plant No. 1 & 4	Inland Empire Utilities Agency	28		28	
8	259169	8 362744001	IEUA Regional Plant No. 5	Inland Empire Utilities Agency		3	3	
8	259170	8 330101001	Beaumont WWTP No. 1	Beaumont City	34		34	
8	259171	8 330108001	City of Corona Water Reclamation Facility No. 1	Corona City	149		149	
8	259174	8 332476001	City of Corona Water Reclamation Facility No. 3	Corona City	2		2	
8	259178	8 362375001	Colton/San Bernadino STP, RIX	Colton/San Bernardino RTT&WRA	67		67	
8	259184	8 362283001	IEUA Carbon Canyon Water Reclamation Facility	Inland Empire Utilities Agency	1		1	
8	259195	8 330107002	Jurupa CMSD STP Indian Hills	Jurupa Community Services District		5	5	
8	259196	8 332303001	Temescal Creek Outfall	Eastern Municipal Water Dist	22		22	
8	259205	8 332353001	STP,NORCO	Western Riverside Cnty Regional Wastewater Authority	104		104	
8	259216	8 332253001	Lee Lake Water Reclamation Facility	Lee Lake Water District		87	87	
8	(blank)	(blank)	(blank)	(blank)	43	1	44	
8 Total					925	110	1,035	
9	209953	(blank)	Body Beautiful Carwash Pacific Hwy	Terra Vac	3		3	

Facilities with MMP s							ADDRESSED AND IN PROGRESS	PENDING	Grand Total
REGION OFFICE	FACILITY	WDID	FACILITY NAME	AGENCY NAME					
			San Diego						
9	210695	(blank)	BUENA SD, SHADOWRIDGE WRP	Encina Wastewater Authority		2		2	
9	224137	9 000000115	Fallbrook Public Water District Plant 1	Fallbrook Public Utility Dist		28		28	
9	229725	9 000000833	HARRF DISCH TO ESCONDIDO CREEK	Escondido City		11		11	
9	229726	9 000000031	HARRF DISC to San Elijo Ocean Outfall	Escondido City		437		437	
9	236019	(blank)	LA SALINA WWTP, OCEANSIDE OTFL	Oceanside City		14		14	
9	237396	9 000000117	LOS ALISOS WD WWTP	SOCWA-ALISO CREEK OCEAN O/F		3		3	
9	240988	9 000000506	MISSION VALLEY TERMINAL	Kinder Morgan, MVT, SFPP, L.P.		29		29	
9	245791	9 000000436	Mountain Water Ice Oceanside Plant	Mountain Water Ice Company		107		107	
9	246018	9 000000469	ONE AMERICA PLAZA DEWATER	AMERICA PLAZA OWNERS ASSOC		3		3	
9	248796	9 000000275	Point Loma Ocean Outfall	San Diego City		14		14	
9	249321	9 000000588	PROMENADE AT PACIFIC BCH DEWAT	PROMENADE MALL DEVELOPMT CORP		3		3	
9	255226	9 000000329	San Diego City Convention Center Dewatering	San Diego City		45		45	
9	255265	(blank)	SAN ELIJO WPCF	San Elijo Joint Powers		3		3	
9		9 000000125	SAN ELIJO WPCF	San Elijo Joint Powers		3		3	
9	256121	9 000000083	SeaWorld, San Diego	Anheuser-Busch, Inc.		8		8	
9	257520	9 000000175	SMWD OSO CREEK WRF	SOCWA-SAN JUAN CREEK OCEAN O/F		43		43	
9	257701	9 000000086	SONGS UNIT 1	Southern California Edison - San Clemente		3		3	
9	257991	9 000000137	BAE Systems San Diego Ship Repair (formerly SOUTHWEST MARINE SHIPYARD)	SOUTHWEST MARINE, INC		1		1	
9	625254	9 000001414	San Vicente Pipeline Project	(blank)		46		46	
9	640111	9 000001411	501 First Street, Coronado CA, Dickerson Residence	Dickerson, William G. and Heidi		8		8	

Facilities with MMP s						ADDRESSED AND IN PROGRESS	PENDING	Grand Total
REGION OFFICE	FACILITY	WDID	FACILITY NAME	AGENCY NAME				
9	655225	9 000001692	Studio 15 Housing Const Dewatering- Enrollee under R9-2000-0090	Studio 15 Housing Partners LLC	21		21	
9	(blank)	(blank)	(blank)	(blank)	6	1	7	
9 Total						841	1	842
Grand Total						20,433	2,664	23,097

Appendix E: List of Federal Facilities with Violations 2000-2008

REGION	WDID	PROGRAM	FACILITY NAME	AGENCY NAME	2000	2001	2002	2003	2004	2005	2006	2007	2008	Grand Total
1	1B91043NMEN	NPDES	CDF&G COYOTE VALLEY FISH FACIL	US ARMY CORPS OF ENGINEER-SF	1									1
1 Total					1									1
2	2 21I018933	INDSTW	Base Yard	US Amry Coprs Engineers Base Yard								1	1	2
2	2 38C309574	CONSTW	CRISSY FIELD GGNRA	USDI National Park Service San Francisco	1									1
2	2 48I005531	INDSTW	Former Mare Island Naval Shipyard	CSO SF Bay								1		1
2	2 01I001886	INDSTW	US Army Military Traffic Mgt C	US Army Military Traffic Management								1		1
2	2 386013001	NPDES	TREASURE ISLAND WWTP/DOD	US NAVY NAVAL SUPPORT ACTIVITY	8	2			3			2		15
2	2 386039N01	NPDES	TREASURE ISLAND SKEET RANG	US NAVY-TREASURE ISLAND STN					3					3
2	2 07I003104	INDSTW	Former Point Molase Navy Fuel Depot	CSO San Francisco Bay								1		1
2	2 48C348301	CONSTW	Suisun Bay Reserve Fleet Parking Lot	USDOT Maritime Administration								3		3
2	2 41I021098	INDSTW	Child Development Center	Miramar Marine Air Field									1	1
2	(blank)	NPDES	(blank)	US Department of Navy BRAC Program Management Office West							3			3
2 Total					9	2			6		3	9	2	31
3	3 270001000	NPDES	BILGE WATER DISCHARGES	Moss Landing Harbor District					1		4			5
3	3 40C319388	CONSTW	Bldg Demolition	US Army Reserve California National Guard						1				1
3	3 27I002532	INDSTW	Fort Hunter Ligget USAR	Fort Hunter Liggett USAR							1		1	2
3	3 42C329342	CONSTW	USDA Forest Service First Crossing Day Use	Goleta						1				1
3	3 27C332967	CONSTW	Glasgow Hall	US Naval Postgraduate School						1				1

REGION	WDID	PROGRAM	FACILITY NAME	AGENCY NAME	2000	2001	2002	2003	2004	2005	2006	2007	2008	Grand Total
3	3 42C331812	CONSTW	Ortega Reservoir Retrofit Proj	USDI Bureau of Reclamation Fresno						1				1
3	3 42I009825	INDSTW	US Penitentiary Lompoc	US PENITENTIARY					1				1	2
3 Total									2	4	5		2	13
4	4A566000458	NPDES	Casitas Dam	USDI Bureau of Reclamation Fresno	1									1
4	4B196600136	NPDES	DFSP Norwalk Facility	Audit Agent	2		5	7	14	4	3	2		37
4	4B196600122	NPDES	DFSP San Pedro-Pump House Area	Defense Fuel Support Point		1	3	5	2					11
4	4B190705001	NPDES	Defense Fuel Supply - Norwalk	US Navy Defense Fuel Supply Center					5	3				8
4	4B190705002	NPDES	Defense Fuel Supply, Pier 12, Long Beach	US Navy Defense Logistics Agency	5	5	3		18	3	2			36
4	4B197500044	NPDES	Federal Correctional Institution-Terminal Island	Federal Bureau of Prisons						8	4	4		16
4	4 19I005602	INDSTW	US Defense Fuel Support Point	US Defense Contract Audit Agent		1	1							2
4	4 56C318987	CONSTW	Ltm P 7	US Navy Pacific Fleet				4						4
4	4 56I000859	INDSTW	US Navy Point Mugu Site	Department of the Navy - Naval Base Ventura County		2								2
4	4 56I013434	INDSTW	US Navy Base Ventura Cnty Port	Department of the Navy - Naval Base Ventura County		2								2
4	4A566600084	NPDES	Navy Exchange Gas St	Naval Base, Point Mugu	4	5	9	1						19
4	4B190703003	NPDES	San Clemente Island WWTP	US Navy Region Southwest	18	43	2	9	14	12	17	3	3	121
4	4A560703007	NPDES	San Nicholas Island Desalination Plant	US Naval Base Ventura Cnty, Environmental Div	3	4	2	6	5	1				21
4	4 56I000858	INDSTW	US Navy San Nicolas Island	US Navy San Nicolas Island		1								1
4	4B197500223	NPDES	Demolition of Junipero Serra State Bldg	U.S. General Services Administration								6		6
4 Total					33	64	25	32	58	31	26	15	3	287
5F	5C220701002	NPDES	EL PORTAL WWTF	USDI NPS YOSEMITE	9		3		1		3	5		21

REGION	WDID	PROGRAM	FACILITY NAME	AGENCY NAME	2000	2001	2002	2003	2004	2005	2006	2007	2008	Grand Total
5F	5C220701004	NPDES	WAWONA WWTF	USDI NPS YOSEMITE		1								1
5F														
Total					9	1	3		1		3	5		22
5R	5R45C343917	CONSTW	Crystal Creek Rd	USDI National Park Service Whiskeytown									1	1
5R														
Total													1	1
5S	5S34C312499	CONSTW	American River Left Bank 2	US ARMY CORPS OF ENGINEERS	1									1
5S	5A580700001	NPDES	BEALE AFB WWTP	US AIR FORCE - BEALE AFB	1									1
5S	5S58I009991	INDSTW	US Air Force Beale	US AIR FORCE - BEALE AFB						1				1
5S	5S39I017194	INDSTW	US Defense Dept Sharpe Site	US Defense Dept Defense Logistics Agency				1						1
5S	5B390701001	NPDES	DDJC, SHARPE - GW CLEANUP	US Defense Dept Defense Logistics Agency	16		7	2						25
5S	5S39I018810	INDSTW	Defense Distribution Depot San Joaquin Sharpe Site	US Defense Dept Defense Logistics Agency					1					1
5S	5A340700006	NPDES	Groundwater Extraction and Treatment System	US Air Force - McClellan AFB	2	2								4
5S	5S34C309062	CONSTW	Lower American River	US ARMY CORPS OF ENGINEERS	1									1
5S	5S39I001639	INDSTW	US Navy Communications	US Navy Communications					1	1	1	1		4
5S	5A09NP00010	NPDES	Sliger Mine UCD Aquatic Weed	USDI Bureau of Reclamation Sacramento					1	1	2	6		10
5S	5A570800005	NPDES	Laboratory	US Dept of Agriculture	8		1						6	15
5S	5S34I015729	INDSTW	US Army Reserves 63Rd Rsc Bt C	US Army Reserves 63rd RRC						1				1
5S	5S34I019404	INDSTW	USCG Air Station Sacramento	US Coast Guard Air Station Sacramento								1	2	3
5S	5S31I020109	INDSTW	Sliger Mine	USDI Bureau of Reclamation Sacramento							1			1
5S	5S34C345449	CONSTW	American River	US ARMY CORPS OF									2	2

REGION	WDID	PROGRAM	FACILITY NAME	AGENCY NAME	2000	2001	2002	2003	2004	2005	2006	2007	2008	Grand Total
5S	5S34C349833	CONSTW	Watershed Cal Folsom Bridge Proj	ENGINEERS										
5S			Folsom Spillway Phase 1	US Bureau of Reclamation									3	3
5S Total					29	2	8	3	3	4	5	11	9	74
6A	6A090808005	CONSTW	Blackwood Creek Phase III Site A	US Forest Service LTBMU									1	1
6A Total													1	1
7	7 361002037	INDSTW	US Marine Corp Commanding Gen	US Marine Corps Commanding Gen								1		1
7	7A130706001	NPDES	US NAVY NAVAL AIR FACILITY TREATED GROUNDWATER DISCHARGE	US Navy		3	2							5
7	7B362241001	NPDES	US BUREAU OF RECLAMATION PARKER DAM PP	USDI Bureau of Reclamation Parker Dam			1				1			2
7	7A130703011	NPDES	US Navy Naval Air Facility WWTP	US Navy	10	11	9	6	3	1	3	15	1	59
7 Total					10	14	12	6	3	1	4	16	1	67
8	8 302492001	NPDES	Former USMC Air Station, Tustin - GW Cleanup	US Navy BRAC Program Mgmt Office West							1			1
8	8 301004651	INDSTW	NAVWPNSTA Seal Beach	NAVWPNSTASB					1	1				2
8	8 331007289	INDSTW	U S Battery Mfg Co	US Battery Manufacturing Co	1									1
8	8 301002534	INDSTW	US Army Reserve Ecs 16	US Army Reserve ECS 16			1							1
8	8 36C336151	CONSTW	USPS Southside Station	US Postal Service							3			3
8 Total					1		1		1	1	4			8
9	9 37C320577	CONSTW	Bachelors Enlisted Quarters	US MARINE CORPS					1					1
9	9 37C319915	CONSTW	Border Infrastructure Sys Joint Logistics Over	US Justice Dept					2					2
9	9 37C317472	CONSTW	Shore	US Navy ROICC					1					1
9	9 000000888	NPDES	MCAS FUEL FARM UST	USMC BASE, CAMP	6									6

REGION	WDID	PROGRAM	FACILITY NAME	AGENCY NAME	2000	2001	2002	2003	2004	2005	2006	2007	2008	Grand Total
9			REM DEW	PENDLETON										
9	9 37C316431	CONSTW	Replace Electrical Distributio	US Navy ROICC			1							1
9	9 000000497	NPDES	Naval Base San Diego	US Navy Southwest Div				1						1
9	9 000346N00	NPDES	NAVAL SURFACE FORCES	US Navy	1									1
9			NAVY PUBLIC WRK	US NAVY PUBLIC WORKS										
9	9 000000283	NPDES	GRAVING DOCK	CENTER	2	2		1	1					6
9			PLANTS 1,2,3 &13 DISCH	USMC BASE, CAMP										
9	9 000001182	NPDES	TO OOO	PENDLETON				21	58	4		121	36	240
9	9 000000538	NPDES	US Naval Base Point Loma	US Navy Southwest Div					1					1
9			South Bay International	IBWC-US & Mexico										
9	9 000000732	NPDES	WTP	Section	299		9	11	2	3			3	327
9	9 37C312882	CONSTW	San Onofre Phase 1	US Navy ROICC					1					1
9			US NAVAL BASE											
9	9 000000495	NPDES	CORONADO (NBC)	US Navy Southwest Div				4	1					5
9	9 37C339374	CONSTW	US Border Patrol Station	US Border Patrol								1		1
9				Camp Pendleton &										
9	9 37C348390	CONSTW	Del Mar North	Quantico Housing LLC								1	1	2
9 Total					308	2	10	38	68	7		123	40	596
Grand Total					400	85	59	79	142	48	50	179	59	1,101

Appendix F: Summary of 2000-2008 Violations by Program, by Regional Board and by Violation Type

Program/Region/Violation Type	2000	2001	2002	2003	2004	2005	2006	2007	2008	Grand Total
CONSTW	586	857	711	697	883	851	475	432	334	5,826
1	2	5	3	3	1	1		1	3	19
Effluent		1								1
OEV		1								1
Other Requirement		2	1	3	1			1	3	11
Basin Plan Prohibition				2	1					3
BMP								1	3	4
Permit Condition		2		1						3
SWPPP			1							1
Reporting		1	1							2
Deficient Report		1	1							2
Water Quality	2	1	1			1				5
Unauthorized Discharge	2	1	1			1				5
2	134	12	27	29	2	2	4	7	2	219
Effluent	32	5	5							42
OEV	32	5	5							42
Monitoring							1			1
Deficient Monitoring							1			1
Other Requirement	2	4	20	19	2	1	2	4	1	55
Basin Plan Prohibition	1	2	4							7
BMP								1	1	2
Failure to Pay Fees			1		1	1	1	2		6
Permit Condition	1	2	15	19	1		1			39
SWPPP								1		1
Reporting	96	1	1	10				3	1	112
Deficient Report	96	1	1	10				3	1	112
Water Quality	4	2	1			1	1			9
Groundwater	1					1				2
Sanitary Sewer Overflow/Spill/							1			1
Unauthorized Discharge	3	2	1							6
3	17	23	59	16	71	384	14	5	4	593
Effluent	3		2					2	1	8
OEV	3		2					2	1	8
Other Requirement	12	16	52	12	58	12	11	2	3	178
BMP						1	9			10
Failure to Pay Fees				1		1	1			3

Program/Region/Violation Type	2000	2001	2002	2003	2004	2005	2006	2007	2008	Grand Total
Permit Condition	12	16	52	11	58	9	1	1	1	161
Unregulated Discharge						1		1	2	4
Reporting		7	5	3	4	371	3			393
Deficient Report		7	5	3	4	2				21
Late Report						369	3			372
Water Quality	2			1	9	1		1		14
Sanitary Sewer Overflow/Spill/						1		1		2
Unauthorized Discharge	2			1	9					12
4	116	367	179	277	232	118	81	53	65	1,488
Other Requirement	108	362	179	277	231	117	76	52	63	1,465
BMP		8	2	3	8	24	35	22	41	143
California Water Code					1					1
Enforcement Action			4	4			1			9
Failure to Obtain Permit						1	2	1		4
Failure to Pay Fees	16	5	15	1		1	2	4		44
File								1		1
Permit Condition	90	347	152	266	221	70	18	10	6	1,180
SWPPP	2	2	3	3	1	19	18	13	16	77
Unregulated Discharge			3			1		1		5
(blank)						1				1
Reporting	2	5								7
Deficient Report	2	5								7
Water Quality	6				1	1	5	1	2	16
Unauthorized Discharge	6				1	1	5	1		14
(blank)									2	2
5F	5			6	20	23	22	4	2	82
Effluent				1	4	13				18
OEV				1	4	13				18
Monitoring						1	1			2
Deficient Monitoring						1				1
(blank)							1			1
Other Requirement	5			5	16	9	14	4	2	55
BMP						2	2	1		5
California Water Code						1				1
Enforcement Action	1				1					2
Failure to Pay Fees								3		3
Permit Condition	4			5	15	5	2		1	32
SWPPP							6		1	7
Unregulated Discharge						1				1

Program/Region/Violation Type	2000	2001	2002	2003	2004	2005	2006	2007	2008	Grand Total
(blank)							4			4
Water Quality							7			7
Unauthorized Discharge							7			7
5R	50	22	39	26	63	41	15	28	23	307
Effluent						1				1
OEV						1				1
Other Requirement	39	18	36	26	47	35	9	19	15	244
BMP						1		6	12	19
California Water Code	1									1
Enforcement Action		1								1
Failure to Obtain Permit							1	2		3
Permit Condition	38	17	36	26	47	26	2	5		197
SWPPP						8	6	5	3	22
Unregulated Discharge								1		1
Reporting	8	1	1		15	1	5	8	8	47
Deficient Report	8	1	1		15	1				26
Late Report								4	1	5
(blank)							5	4	7	16
Water Quality	3	3	2		1	4	1	1		15
Effluent							1			1
Unauthorized Discharge	3	3	2		1	4		1		14
5S	46	44	27	71	136	68	31	100	122	645
Effluent		2		1	1					4
ATOX					1					1
OEV		2		1						3
Other Requirement	44	42	27	69	133	66	31	91	116	619
Basin Plan Prohibition					3					3
BMP						2	8	65	97	172
Enforcement Action						1	1			2
Failure to Obtain Permit						1	4	4	6	15
Failure to Pay Fees							1	16		17
Permit Condition	44	42	27	69	128	52	16	1		379
SWPPP					2	10		5	12	29
Unregulated Discharge									1	1
(blank)							1			1
Reporting	1				1	1			1	4
Deficient Report	1				1					2
Late Report						1			1	2
Water Quality	1			1	1	1		9	5	18
Unauthorized Discharge	1			1	1	1		9	5	18

Program/Region/Violation Type	2000	2001	2002	2003	2004	2005	2006	2007	2008	Grand Total
6A	21	21	49	35	61	40	69	12	8	316
Effluent		2	15	7	1	4	1			30
CAT1			8	2						10
CAT2			5	5	1					11
OEV		2	2			4	1			9
Other Requirement	9	16	32	17	49	34	67	7	6	237
Basin Plan Prohibition	4	6	7	3	3	1	19	1	2	46
BMP						5	15	2	2	24
California Water Code								1		1
Enforcement Action		1	6		1	1				9
Failure to Obtain Permit					2					2
Failure to Pay Fees					2					2
Permit Condition	5	9	19	14	41	24	13	1	1	127
SWPPP						2	18	2	1	23
Unregulated Discharge						1				1
(blank)							2			2
Reporting	9	3	2	11	11		1	4		41
Deficient Report	9	3	2	11	11					36
Late Report							1	4		5
Water Quality	3					2		1	2	8
Effluent						2				2
Groundwater	2									2
Sanitary Sewer										
Overflow/Spill/	1							1		2
Unauthorized Discharge									2	2
6B	11	54	15			1	8	10	25	124
Effluent									1	1
CAT2									1	1
Other Requirement	7	52	9			1	8	10	24	111
Basin Plan Prohibition	1	40	1						1	43
BMP								1	15	16
Enforcement Action	3		1					1	3	8
Failure to Obtain Permit							1			1
Failure to Pay Fees							3	8		11
Permit Condition	3	12	7			1			1	24
SWPPP							4		4	8
Reporting	2	1	1							4
Deficient Report	2	1	1							4
Water Quality	2	1	5							8
Unauthorized Discharge	2	1	5							8

Program/Region/Violation Type	2000	2001	2002	2003	2004	2005	2006	2007	2008	Grand Total
7	7					1	1	1		10
Other Requirement	7					1	1	1		10
Failure to Pay Fees						1	1	1		3
Permit Condition	7									7
8	82	165	127	46	77	85	136	73	34	825
Effluent	19	51	14	11	27	15				137
CAT1		16	2	5						23
CAT2	1									1
OEV	18	35	12	6	27	15				113
Other Requirement	58	108	108	28	48	68	132	73	33	656
BMP						58	102	53	25	238
Enforcement Action		16	11	2	8					37
Failure to Obtain Permit									1	1
Failure to Pay Fees					20	4	16	12		52
Fees							2			2
Other Codes						3				3
Permit Condition	58	91	97	26	20		5	4	3	304
SWPPP		1				3	7	4	3	18
Unregulated Discharge									1	1
Reporting	3	5	1							9
Deficient Report	3	5	1							9
Water Quality	2	1	4	7	2	2	4		1	23
Unauthorized Discharge	2	1	4	7	2	2	4		1	23
9	95	144	186	188	220	87	94	138	46	1,198
Effluent	33	58	5		3	4				103
OEV	33	58	5		3	4				103
Monitoring							1			1
Deficient Monitoring							1			1
Other Requirement	57	80	169	152	189	68	91	116	36	958
Basin Plan Prohibition					1	4				5
BMP						3	21	41	31	96
Enforcement Action		2	1	2	2			1		8
Failure to Obtain Permit						1	3	1		5
Failure to Pay Fees	18	32	72	42	44	30	58	69		365
Permit Condition	39	46	96	108	142	30	2		2	465
SWPPP							3		3	6
Unregulated Discharge							4	4		8
Reporting	3	3	6	5	1	6		1	1	26
Deficient Report	3	3	6	5	1	6				24
(blank)								1	1	2

Program/Region/Violation Type	2000	2001	2002	2003	2004	2005	2006	2007	2008	Grand Total
Water Quality	2	3	6	31	27	9	2	21	9	110
Unauthorized Discharge	2	3	6	31	27	9	2	21	9	110
INDSTW	929	1,658	1,769	1,061	1,207	1,410	1,210	1,344	1,369	11,957
1	68	57	49	86	11	3	5	98	97	474
Effluent	6	2	3	5						16
OEV	6	2	3	5						16
Monitoring								1		1
(blank)								1		1
Other Requirement	5	2	5	2	1	3	5	16	1	40
Basin Plan Prohibition		1	1			2				4
BMP							5	6	1	12
Failure to Pay Fees					1					1
Permit Condition	5	1	4	2				1		13
SWPPP						1		9		10
Reporting	51	47	41	79	10			81	96	405
Deficient Report	51	47	41	78	9				1	227
Late Report				1				79	95	175
(blank)					1			2		3
Water Quality	6	6								12
Unauthorized Discharge	6	6								12
2	5	6	77	36		6	3	287	236	656
Effluent	1	2	25							28
OEV	1	2	25							28
Monitoring						1	2	2		5
Deficient Monitoring						1	1			2
Late Monitoring							1	2		3
Other Requirement	1	1	29	36		2	1	2	1	73
Basin Plan Prohibition	1		29	35						65
BMP						1			1	2
Failure to Pay Fees		1								1
Permit Condition				1						1
SWPPP						1	1	1		3
Unregulated Discharge								1		1
Reporting	3		21			3		282	235	544
Deficient Report	3		21					5	1	30
Late Report						3		273	233	509
(blank)								4	1	5
Water Quality		3	2					1		6
Groundwater		2								2
Unauthorized Discharge		1	2					1		4

Program/Region/Violation Type	2000	2001	2002	2003	2004	2005	2006	2007	2008	Grand Total
3	2	6	35	14	131	71	41	53	52	405
Other Requirement		6	15	5	7	5	1			39
BMP							1			1
Failure to Pay Fees				2						2
Permit Condition		6	15	3	7	5				36
Reporting	2		19	8	124	64	40	53	52	362
Deficient Report	2		19	8	123	4	3	1		160
Late Report					1	59	26	52	52	190
(blank)						1	11			12
Water Quality			1	1		2				4
Sanitary Sewer										
Overflow/Spill/						1				1
Unauthorized Discharge			1	1		1				3
4	92	822	955	444	281	162	135	88	151	3,130
Monitoring		1	1	1	2	10	8	4	7	34
Deficient Monitoring			1	1	1	4	4	3	4	18
Incomplete Monitoring		1				5	4	1	3	14
(blank)					1	1				2
Other Requirement	72	632	779	410	260	135	110	75	124	2,597
Basin Plan Prohibition			1							1
BMP	1	21	30	13	12	49	52	31	60	269
California Water Code				5	1					6
Enforcement Action		4	32	43	11	3	2			95
Failure to Obtain Permit		2	1		5	14	17	1	6	46
Failure to Pay Fees	19	6	26	8			1	1		61
File	2	3						1		6
Permit Condition	50	565	661	331	219	25	10	11	13	1,885
SWPPP		30	23	8	9	35	25	23	40	193
Unregulated Discharge		1	5	2	2	9	3	4		26
(blank)					1			3	5	9
Reporting	16	184	168	28	10	14	8	5	5	438
Deficient Report	13	169	157	23	7		3	2		374
Late Report	3	15	11	5	3	14	5	3	5	64
Water Quality	4	5	7	5	9	3	9	4	15	61
Effluent		1	3		4	1	8		5	22
Unauthorized Discharge	4	4	3	5	5	2	1	3	10	37
(blank)			1					1		2
5F	8	5	6	3	85	286	226	9	162	790
Effluent	1		1	2	14					18
CAT1				1						1

Program/Region/Violation Type	2000	2001	2002	2003	2004	2005	2006	2007	2008	Grand Total
OEV	1		1	1	14					17
Other Requirement					25	3	1		18	47
Basin Plan Prohibition						1				1
BMP									3	3
Failure to Pay Fees					8					8
Permit Condition					17				13	30
SWPPP							1		2	3
(blank)						2				2
Reporting	7	5	5	1	45	283	225	9	144	724
Deficient Report	7	5	5	1	45		2			65
Late Report						283	223	9	144	659
Water Quality					1					1
Unauthorized Discharge					1					1
5R	15	3	89	2	90	9	67	46	43	364
Effluent						1	1			2
OEV						1	1			2
Monitoring						1				1
Deficient Monitoring						1				1
Other Requirement	1	1	63		39	3	21	6	7	141
BMP					1		17	3	6	27
Permit Condition	1	1	63		38	2	3	1		109
SWPPP						1	1		1	3
Unregulated Discharge								1		1
(blank)								1		1
Reporting	12		26	1	51	4	43	38	34	209
Deficient Report	12		26	1	48	3				90
Late Report					2			36	28	66
(blank)					1	1	43	2	6	53
Water Quality	2	2		1			2	2	2	11
Effluent							1	1		2
Receiving Water							1			1
Unauthorized Discharge	2	2		1					2	7
(blank)								1		1
5S	139	1	30	135	242	411	511	275	227	1,971
Effluent	1									1
OEV	1									1
Other Requirement	15		27	7	65	34	2	150	12	312
BMP						2	1	148	6	157
Enforcement Action					1					1
Failure to Obtain Permit							1			1

Program/Region/Violation Type	2000	2001	2002	2003	2004	2005	2006	2007	2008	Grand Total
Failure to Pay Fees								2		2
Permit Condition	15		27	7	64	32				145
SWPPP									6	6
Reporting	121	1	2	124	175	377	509	125	215	1,649
Deficient Report	121	1	2	124	174	146	247	1		816
Late Report					1	231	262	123	215	832
(blank)								1		1
Water Quality	2		1	4	2					9
Unauthorized Discharge	2		1	4	2					9
6A	3	11	23	16	17	2	14	10	5	101
Effluent	1	3		1						5
CAT2		2		1						3
OEV	1	1								2
Monitoring									1	1
Late Monitoring									1	1
Other Requirement		2	23	1	4	2	9	5	3	49
Basin Plan Prohibition		1	2		1		1	1	1	7
Permit Condition		1	21	1	3		1			27
SWPPP						1	7	4	2	14
(blank)						1				1
Reporting	2	6		14	13		3	5	1	44
Deficient Report	2	6		12	12		2			34
Late Report				2	1		1	5		9
(blank)									1	1
Water Quality							2			2
Sanitary Sewer										
Overflow/Spill/							1			1
(blank)							1			1
6B	35	20		1		1	1		2	60
Other Requirement	2	2				1	1			6
Permit Condition	2	2								4
SWPPP						1	1			2
Reporting	32	18		1					1	52
Deficient Report	32	18		1					1	52
Water Quality	1								1	2
Unauthorized Discharge	1								1	2
7	45	11	21		50	1		42		170
Other Requirement	37							1		38
Permit Condition	37									37
(blank)								1		1

Program/Region/Violation Type	2000	2001	2002	2003	2004	2005	2006	2007	2008	Grand Total
Reporting	8	11	21		50	1		41		132
Deficient Report	8	11	21		50	1				91
Late Report								3		3
(blank)								38		38
8	465	575	263	220	209	411	162	376	292	2,973
Effluent	36	83	20	5	15	15				174
CAT1	1	33	16							50
CAT2	1									1
OEV	34	50	4	5	15	15				123
Monitoring									2	2
Deficient Monitoring									1	1
(blank)									1	1
Other Requirement	112	147	125	85	186	55	24	34	56	824
BMP						21	10	11	27	69
California Water Code		1								1
Enforcement Action		7	9		1	3				20
Failure to Obtain Permit						12	6	19	4	41
Failure to Pay Fees		1					3		4	8
Fees									2	2
Other Codes						2				2
Permit Condition	112	138	116	85	183	4			3	641
SWPPP					2	13	4	3	13	35
Unregulated Discharge								1	3	4
(blank)							1			1
Reporting	314	343	115	130	7	341	138	342	233	1,963
Deficient Report	314	343	115	130	7	56				965
Late Report						284	137	342	232	995
(blank)						1	1		1	3
Water Quality	3	2	3		1				1	10
Sanitary Sewer										
Overflow/Spill/	1									1
Unauthorized Discharge	2	2	3		1				1	9
9	52	141	221	104	91	47	45	60	102	863
Effluent	5	10		2	9					26
OEV	5	10		2	9					26
Monitoring						22		4	1	27
Deficient Monitoring								3		3
Incomplete Monitoring									1	1
Late Monitoring						22		1		23
Other Requirement	28	124	187	68	22	2	7	50	5	493

Program/Region/Violation Type	2000	2001	2002	2003	2004	2005	2006	2007	2008	Grand Total
Basin Plan Prohibition	1									1
BMP			1			1	3	24	1	30
Enforcement Action		1	1				1			3
Failure to Obtain Permit								1		1
Failure to Pay Fees	3	5	29	13	2	1	3	9	3	68
Fees								1		1
Permit Condition	24	118	156	55	20					373
SWPPP								12	1	13
Unregulated Discharge								2		2
(blank)								1		1
Reporting	18	6	30	34	58	22	36	6	96	306
Deficient Report	18	6	30	34	57	1			2	148
Late Report					1	19	36	6	33	95
(blank)						2			61	63
Water Quality	1	1	4		2	1	2			11
Unauthorized Discharge	1	1	4		2	1	2			11
MNSTW1	47	25	208	120	99	31	39	9	37	615
1		1			1			1		3
Effluent		1								1
OEV		1								1
Other Requirement					1			1		2
Permit Condition					1					1
Unregulated Discharge								1		1
2					3					3
Reporting					3					3
Late Report					3					3
3			2				1			3
Other Requirement			2				1			3
Permit Condition			2				1			3
4	22	8	11	7	8		9	2		67
Other Requirement	22	6	1		5		5	1		40
California Water Code							1			1
Failure to Pay Fees					5					5
Permit Condition	22	6	1				4			33
(blank)								1		1
Reporting		1	6	1			3	1		12
Deficient Report		1	6	1						8
Late Report							3	1		4
Water Quality		1	4	6	3		1			15
Receiving Water							1			1

Program/Region/Violation Type	2000	2001	2002	2003	2004	2005	2006	2007	2008	Grand Total
Sanitary Sewer										
Overflow/Spill/		1	2	2	1					6
Unauthorized Discharge			2	4	2					8
5R							1			1
Other Requirement							1			1
SWPPP							1			1
5S						1				1
Other Requirement						1				1
Permit Condition						1				1
6A							1		1	2
Monitoring									1	1
Deficient Monitoring									1	1
Other Requirement							1			1
Permit Condition							1			1
8	6	1			9	1	17	1	1	36
Effluent	3	1								4
OEV	3	1								4
Other Requirement	2				9	1	17	1	1	31
BMP									1	1
Failure to Pay Fees					4					4
Permit Condition	2				5	1	17	1		26
Water Quality	1									1
Unauthorized Discharge	1									1
9	19	15	195	113	78	29	10	5	35	499
Effluent	3	2	9	4	1					19
ATOX					1					1
OEV	3	2	9	4						18
Monitoring								1	10	11
Deficient Monitoring									7	7
Incomplete Monitoring								1	1	2
(blank)									2	2
Other Requirement	14	9	140	74	50	21	8	4	24	344
BMP							4	1	3	8
Enforcement Action	4									4
Other Codes									1	1
Permit Condition	10	9	140	74	50	21	3	1	20	328
Unregulated Discharge							1	2		3
Reporting		4	42	22	5	2	1			76
Deficient Report		4	42	22	5	2	1			76
Water Quality	2		4	13	22	6	1		1	49

Program/Region/Violation Type	2000	2001	2002	2003	2004	2005	2006	2007	2008	Grand Total
Unauthorized Discharge	2		4	13	22	6	1		1	49
MNSTW2				2	8	1	8	4	5	28
3						1	6	2	5	14
Other Requirement							5	2		7
Failure to Obtain Permit							1			1
Other Codes							2	2		4
Permit Condition							2			2
Reporting						1	1			2
Deficient Report							1			1
Late Report						1				1
Water Quality									5	5
Sanitary Sewer Overflow/Spill/									5	5
5S				2	8		2	2		14
Other Requirement				1				1		2
Permit Condition				1				1		2
Reporting				1	8		2	1		12
Deficient Report				1	8					9
Late Report							2	1		3
NPDES	6,609	5,849	5,841	6,106	7,182	6,699	7,706	6,932	3,308	56,232
1	918	613	415	434	627	395	312	186	273	4,173
Effluent	242	274	182	173	189	205	168	104	247	1,784
ATOX	1	2	5	4	7	7		9		35
CAT1	141	170	114	104	130	151	69	33	214	1,126
CAT2	31	17	19	14	17	8	8	11	10	135
CTOX			2	1	1					4
OEV	69	85	42	50	34	39	91	51	23	484
Monitoring					2	18	16	5	5	46
Deficient Monitoring					1	18	9	1		29
Incomplete Monitoring					1		7	4	5	17
Other Requirement	323	105	106	79	141	61	66	45	9	935
Basin Plan Prohibition	2	2	8							12
Enforcement Action				1	2	1				4
Failure to Pay Fees					1					1
Permit Condition	321	103	97	78	137	55	66	44	9	910
Pretreatment								1		1
Unregulated Discharge			1		1	5				7
Reporting	322	187	78	125	249	45	8	7	2	1,023
Deficient Report	322	187	78	125	236	32	3	1		984
Late Report					13	13	5	6	2	39

Program/Region/Violation Type	2000	2001	2002	2003	2004	2005	2006	2007	2008	Grand Total
Water Quality	31	47	49	57	46	66	54	25	10	385
Receiving Water				1		5	2	2	4	14
Sanitary Sewer										
Overflow/Spill/	26	44	49	42	35	43	43	14	5	301
Unauthorized Discharge	5	3		14	11	18	9	9	1	70
2	496	510	310	268	277	269	354	215	155	2,854
Effluent	470	486	283	235	251	252	275	174	97	2,523
ATOX	14	13	9	14	13	6	6	9	16	100
CAT1	113	204	166	80	64	85	156	73	20	961
CAT2	158	93	59	78	63	53	36	40	47	627
CTOX	16	10	7	8	6	2	2			51
OEV	169	166	42	55	105	106	75	52	14	784
Monitoring					1		2	7	4	14
Deficient Monitoring					1		1	2	4	8
(blank)							1	5		6
Other Requirement	12	6	12	2	13	2	5	2	4	58
Basin Plan Prohibition	2									2
California Water Code									1	1
Failure to Pay Fees					7				1	8
Permit Condition	10	6	12	2	6	1	3	2		42
Unregulated Discharge						1			2	3
(blank)							2			2
Reporting	8	12	3	14	5	1	19	20	10	92
Deficient Report	8	11	3	12	5	1	4	1	1	46
Late Report		1		2					7	10
(blank)							15	19	2	36
Water Quality	6	6	12	17	7	14	53	12	40	167
Effluent				1	1	7	32	10	31	82
Groundwater						2				2
Receiving Water			1	1	1	4	3		1	11
Sanitary Sewer										
Overflow/Spill/	3	5	5	3	3		1			20
Unauthorized Discharge	3	1	6	12	2		1		7	32
(blank)						1	16	2	1	20
3	350	387	305	214	414	409	430	478	99	3,086
Calculation								2		2
Effluent	201	204	144	88	149	163	155	197	73	1,374
ATOX	5	2			6	3	3	8	2	29
CAT1	120	144	124	54	71	98	65	61	23	760
CAT2	24	5	2	3	23	17	22	29	23	148
CTOX	1	1			2	5	5	12	3	29

Program/Region/Violation Type	2000	2001	2002	2003	2004	2005	2006	2007	2008	Grand Total
OEV	51	52	18	31	47	40	60	87	22	408
Monitoring					7	45	92	60	11	215
Deficient Monitoring					3	36	88	58	10	195
Incomplete Monitoring					4	9	1	1		15
Late Monitoring							1			1
(blank)							2	1	1	4
Other Requirement	14	21	18	23	62	9	1	1	1	150
BMP							1			1
Enforcement Action	1									1
Failure to Pay Fees					4					4
Permit Condition	13	21	18	23	58	9		1	1	144
Reporting	8	23	14	15	76	68	74	28	1	307
Deficient Report	7	23	14	15	76	53	21	4	1	214
Late Report	1					15	42	12		70
(blank)							11	12		23
Water Quality	127	139	129	88	120	124	108	190	13	1,038
Effluent								1		1
Groundwater	1					2	2	2		7
Receiving Water						32	57	142	11	242
Sanitary Sewer										
Overflow/Spill/	123	137	125	83	119	89	49	41	2	768
Unauthorized Discharge	3	2	4	5	1	1		4		20
4	2,175	2,505	2,621	3,007	2,706	2,307	3,142	2,865	959	22,287
Calculation									1	1
Effluent	1,260	1,374	1,559	1,934	972	1,125	1,337	879	250	10,690
ATOX	18	21	16	31	28	60	59	23	7	263
CAT1	556	595	592	759	400	433	482	334	98	4,249
CAT2	177	228	263	276	376	396	517	356	112	2,701
CTOX	8	2	6	8	4	8	2	3	1	42
OEV	501	528	682	860	164	228	277	163	32	3,435
Monitoring	2	11	16	12	25	29	105	88	13	301
Deficient Monitoring	2	11	16	12	24	29	104	84	11	293
Incomplete Monitoring					1				1	2
Late Monitoring							1	4	1	6
Other Requirement	6	14	44	7	49	2	14	31	69	236
BMP				1	1					2
Enforcement Action	1	2								3
Failure to Obtain Permit								14	66	80
Failure to Pay Fees	1		27		38					66
File				1						1

Program/Region/Violation Type	2000	2001	2002	2003	2004	2005	2006	2007	2008	Grand Total
Permit Condition	4	12	17	4	8	2	14	17	3	81
SWPPP				1	2					3
Reporting	883	1,085	987	1,046	1,659	1,146	1,681	1,861	626	10,974
Deficient Report	483	733	658	708	509	780	1,007	777	179	5,834
Late Report	400	346	323	329	1,146	365	674	1,080	447	5,110
(blank)		6	6	9	4	1		4		30
Water Quality	24	21	15	8	1	5	5	6		85
Receiving Water					1					1
Sanitary Sewer										
Overflow/Spill/	10	14	12	6		5	3			50
Unauthorized Discharge	14	7	3	2			2	6		34
5F	246	229	526	489	458	320	331	440	130	3,169
Effluent	90	71	323	301	331	243	228	286	93	1,966
ATOX					2			1		3
CAT1	15	26	242	194	84	39	47	53	25	725
CAT2	19	7	1	1	17	11	4	8	4	72
CTOX			8	1						9
OEV	56	38	72	105	228	193	177	224	64	1,157
Monitoring	1		14	25	15	16	20	12	8	111
Deficient Monitoring	1		12	25	15	16	19	12	7	107
Incomplete Monitoring			2				1		1	4
Other Requirement	11	11	9	59	23	2	15	9	2	141
California Water Code				1						1
Enforcement Action		1								1
Failure to Pay Fees					3					3
Permit Condition	11	10	9	58	20	2	14	9	2	135
Unregulated Discharge							1			1
Reporting	142	147	176	104	89	59	68	133	27	945
Deficient Report	137	137	161	91	63	44	53	39	9	734
Late Report	5	10	15	13	26	15	15	94	18	211
Water Quality	2		4							6
Sanitary Sewer										
Overflow/Spill/	2		4							6
5R	226	94	102	74	79	128	147	86	41	977
Effluent	70	27	54	47	47	35	78	61	15	434
ATOX	3		6		10	4	1			24
CAT1	13	2	9	23	5	5	15	8	3	83
CAT2	8	2	7	7	5	3	8	14	1	55
OEV	46	23	32	17	27	23	54	39	11	272
Monitoring						26	13	10	2	51
Deficient Monitoring						19	1			20

Program/Region/Violation Type	2000	2001	2002	2003	2004	2005	2006	2007	2008	Grand Total
Incomplete Monitoring						7	6	7	2	22
Late Monitoring							4	3		7
(blank)							2			2
Other Requirement	68	45	15	8	22	31	10	2	4	205
Basin Plan Prohibition	1	1								2
Enforcement Action	1		2							3
Failure to Obtain Permit			1							1
Failure to Pay Fees			3		5					8
Permit Condition	64	44	9	8	17	31	8	2	4	187
Pretreatment	2						1			3
Unregulated Discharge							1			1
Reporting	80	22	31	18	6	31	23	4	2	217
Deficient Report	80	22	31	18	6	21	11	1	2	192
Late Report						10	7	2		19
(blank)							5	1		6
Water Quality	8		2	1	4	5	23	9	18	70
Effluent									3	3
Receiving Water				1		3	21	9	6	40
Sanitary Sewer										
Overflow/Spill/	7		2		4		1		1	15
Unauthorized Discharge	1					2	1			4
(blank)									8	8
5S	1,037	768	955	892	1,585	2,285	2,255	1,870	1,232	12,879
Calculation								1	2	3
Effluent	612	490	725	676	1,172	1,791	1,810	1,318	749	9,343
ATOX	78	15	15	3		2				113
CAT1	138	125	288	368	523	1,047	1,128	891	575	5,083
CAT2	146	108	283	96	265	249	360	154	94	1,755
OEV	250	242	139	209	384	493	322	273	80	2,392
Monitoring					1	7		1	25	34
Deficient Monitoring					1	7		1	22	31
Incomplete Monitoring									1	1
(blank)									2	2
Other Requirement	172	71	58	60	270	161	52	16	46	906
BMP							1		2	3
California Water Code									2	2
Enforcement Action			3		6					9
Failure to Pay Fees					11					11
File								1		1
Other Codes					9					9

Program/Region/Violation Type	2000	2001	2002	2003	2004	2005	2006	2007	2008	Grand Total
Permit Condition	172	71	53	60	243	161	51	15	39	865
Pretreatment			2		1				1	4
Unregulated Discharge									1	1
(blank)									1	1
Reporting	206	100	62	72	59	236	356	515	403	2,009
Deficient Report	206	97	60	70	23	46	10	16	114	642
Late Report		3	2	2	36	190	346	496	282	1,357
(blank)								3	7	10
Water Quality	47	107	110	84	83	90	37	19	7	584
Effluent							5	1		6
Groundwater		1	1				1			3
Receiving Water	39	103	107	82	78	86	30	13	4	542
Sanitary Sewer										
Overflow/Spill/	5	2	2	1	3	1		3	3	20
Unauthorized Discharge	3	1		1	1	1		2		9
(blank)					1	2	1			4
6A	10	11	22	11	9	5	1	6	7	82
Effluent	2	1	1	6	5	3	1	2	1	22
CAT1				1		1				2
CAT2					1			1		2
OEV	2	1	1	5	4	2	1	1	1	18
Monitoring									1	1
Incomplete Monitoring									1	1
Other Requirement	3		7	3		1			2	16
Basin Plan Prohibition	1		4						1	6
Permit Condition	2		3	3					1	9
SWPPP						1				1
Reporting	5	9	14	2	3	1		3	2	39
Deficient Report	5	9	13	1				1	1	30
Late Report			1	1	3	1		1	1	8
(blank)								1		1
Water Quality		1			1			1	1	4
Groundwater								1		1
Sanitary Sewer										
Overflow/Spill/					1					1
Unauthorized Discharge		1							1	2
6B	5	10	21	25	22	14	129	43	21	290
Effluent		2	2	3	8	8	104	21	18	166
CAT1			1	2	2	2	93	21	14	135
CAT2							1		2	3
CTOX									2	2

Program/Region/Violation Type	2000	2001	2002	2003	2004	2005	2006	2007	2008	Grand Total
OEV		2	1	1	6	6	10			26
Monitoring								2	2	4
Deficient Monitoring								2		2
Late Monitoring									2	2
Other Requirement	2	1				2	3			8
Basin Plan Prohibition	1	1								2
Permit Condition	1					2	3			6
Reporting	3	7	16	20	13	2	8	20		89
Deficient Report	3	7	16	15	7	1	4	18		71
Late Report				5	6	1	3	2		17
(blank)							1			1
Water Quality			3	2	1	2	14		1	23
Effluent							14			14
Sanitary Sewer										
Overflow/Spill/			2		1	2			1	6
Unauthorized Discharge			1	2						3
7	138	201	210	328	173	193	275	308	208	2,034
Effluent	105	90	161	299	141	158	231	259	199	1,643
ATOX	3	23	35	27	20	4		3		115
CAT1	54	29	81	77	25	13	82	127	76	564
CAT2	12	4	2	20	12	42	70	48	64	274
CTOX		1	3	7	12	2		1		26
OEV	36	33	40	168	72	97	79	80	59	664
Other Requirement	14	7	2	2	1		3	6		35
Enforcement Action	5		1							6
Failure to Pay Fees					1					1
Permit Condition	9	7	1	2			3	6		28
Reporting	16	101	46	24	28	34	41	43	9	342
Deficient Report	16	101	46	24	28	34	39	43	9	340
Late Report							2			2
Water Quality	3	3	1	3	3	1				14
Sanitary Sewer										
Overflow/Spill/	2	3	1	3	3	1				13
Unauthorized Discharge	1									1
8	451	300	194	109	216	236	162	115	57	1,840
Calculation									1	1
Effluent	395	234	135	100	170	228	159	71	22	1,514
ATOX	3	1	1							5
CAT1	129	108	34	30	14	13	6	5	9	348
CAT2	25	27	57	33	40	38	30	12	1	263
CTOX	1	1		1						3

Program/Region/Violation Type	2000	2001	2002	2003	2004	2005	2006	2007	2008	Grand Total
OEV	237	97	43	36	116	177	123	54	12	895
Monitoring						1				1
Deficient Monitoring						1				1
Other Requirement	27	24	10	3	31	3	1	42	14	155
Basin Plan Prohibition	3									3
BMP						1		37	11	49
California Water Code								1		1
Enforcement Action		2	2	1						5
Failure to Pay Fees					28					28
Other Codes		2				1				3
Permit Condition	22	20	8	2	3	1	1	1		58
Pretreatment	2									2
Unregulated Discharge									3	3
(blank)								3		3
Reporting	10	26	41	6	15	3	1	1		103
Deficient Report	10	26	41	6	12	3				98
Late Report					3					3
(blank)							1	1		2
Water Quality	19	16	8			1	1	1	20	66
Effluent									18	18
Sanitary Sewer										
Overflow/Spill/	1	1								2
Unauthorized Discharge	18	15	8			1		1		43
(blank)							1		2	3
9	557	221	160	255	616	138	168	320	126	2,561
Effluent	443	106	110	142	501	102	120	159	75	1,758
ATOX	297	4	5	18	6	1	4		2	337
CAT1	54	55	26	74	439	83	84	90	35	940
CAT2	16	20	28	11	22	11	15	16	8	147
CTOX	28	6	41	24	2	3	5	3	4	116
OEV	48	21	10	15	32	4	12	50	26	218
Monitoring					2	9	9	4		24
Deficient Monitoring					2	8	5			15
Incomplete Monitoring							3	1		4
(blank)						1	1	3		5
Other Requirement	21	17	1	27	37	7	5	1		116
Basin Plan Prohibition	1									1
Enforcement Action	1									1
Failure to Pay Fees	1	10	1		12					24
Other Codes						1				1

Program/Region/Violation Type	2000	2001	2002	2003	2004	2005	2006	2007	2008	Grand Total
Permit Condition	17	7		27	25	6				82
Pretreatment	1						2			3
(blank)							3	1		4
Reporting	88	90	39	68	60	10	28	55	21	459
Deficient Report	88	90	39	68	60		13	49	12	419
Late Report						1	2	1	1	5
(blank)						9	13	5	8	35
Water Quality	5	8	10	18	16	10	6	101	30	204
Effluent						3				3
Sanitary Sewer Overflow/Spill/	1	3			5	2				11
Unauthorized Discharge	4	5	10	18	11	5	6			59
(blank)								101	30	131
Grand Total	8,171	8,389	8,529	7,986	9,379	8,992	9,438	8,721	5,053	74,658