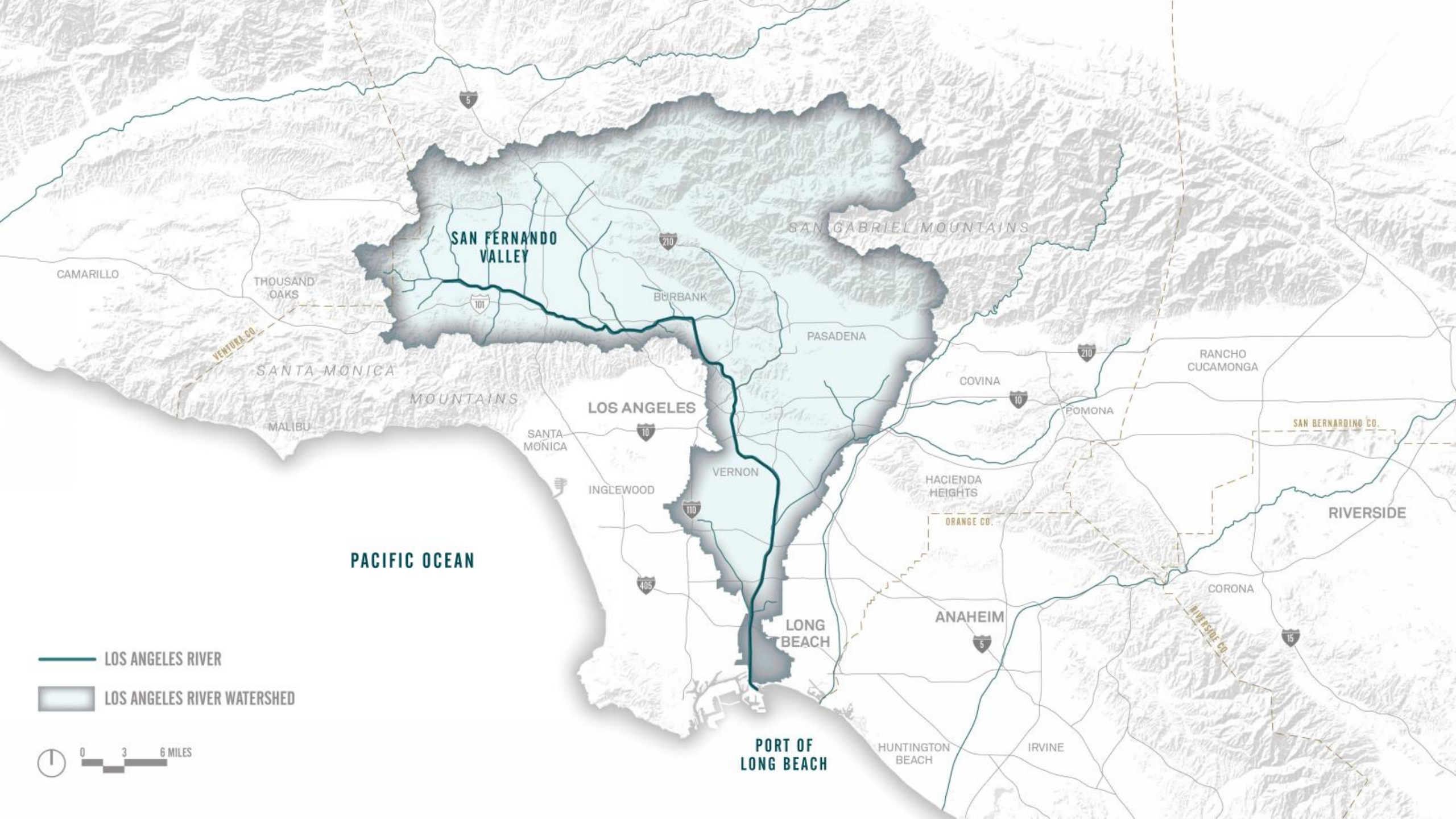


**Eric  
Garcetti**  
#lamayor



# LOS ANGELES RIVER REVITALIZATION

November 8, 2017  
Michael Affeldt  
City of Los Angeles



SAN FERNANDO VALLEY

SAN GABRIEL MOUNTAINS

CAMARILLO

THOUSAND OAKS

BURBANK

PASADENA

SANTA MONICA MOUNTAINS

LOS ANGELES

COVINA

RANCHO CUCAMONGA

MALIBU

SANTA MONICA

VERNON

HACIENDA HEIGHTS

SAN BERNARDINO CO.

RIVERSIDE

PACIFIC OCEAN

INGLEWOOD

ORANGE CO.

CORONA

LONG BEACH

ANAHEIM

PORT OF LONG BEACH

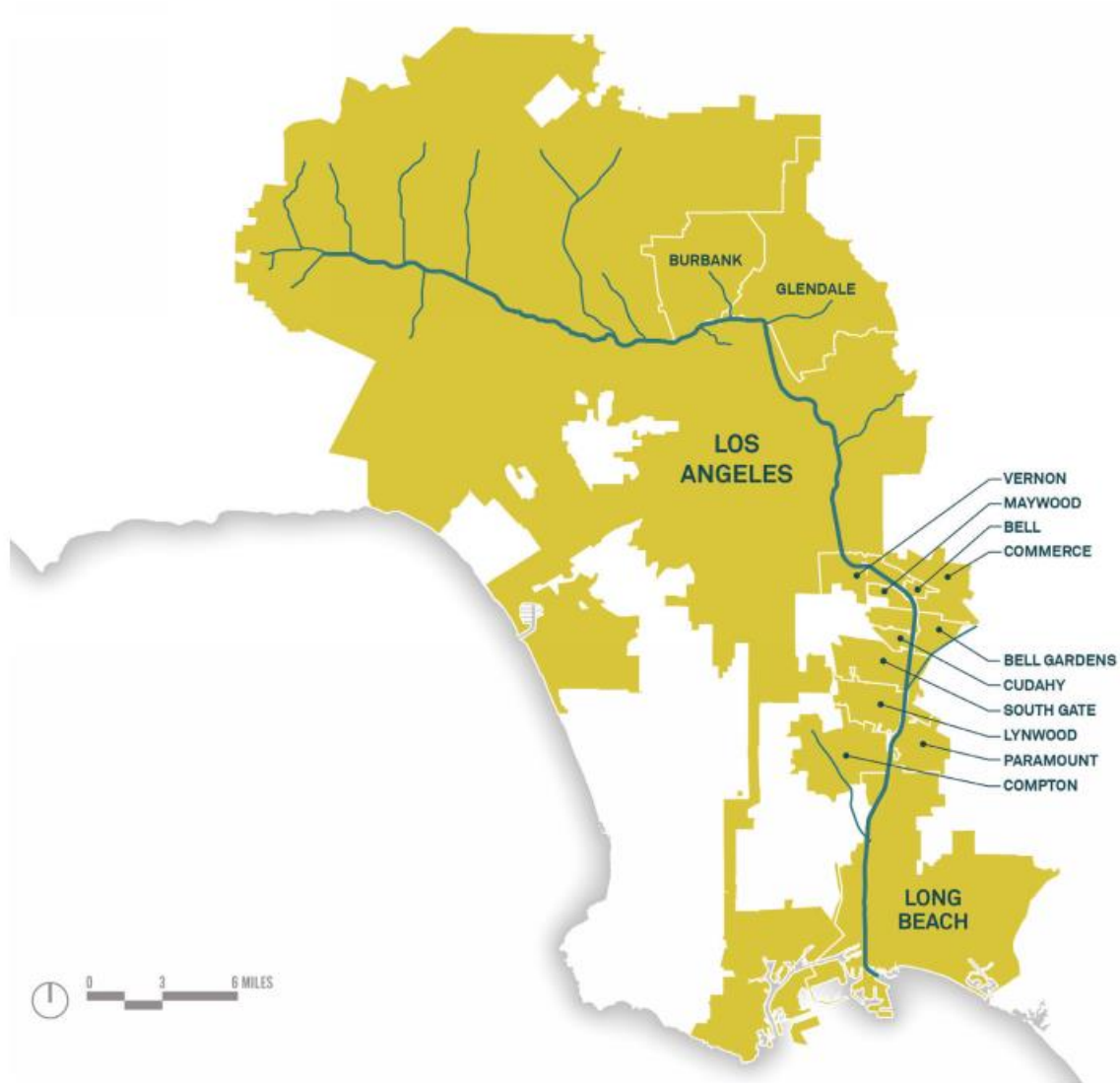
HUNTINGTON BEACH

IRVINE

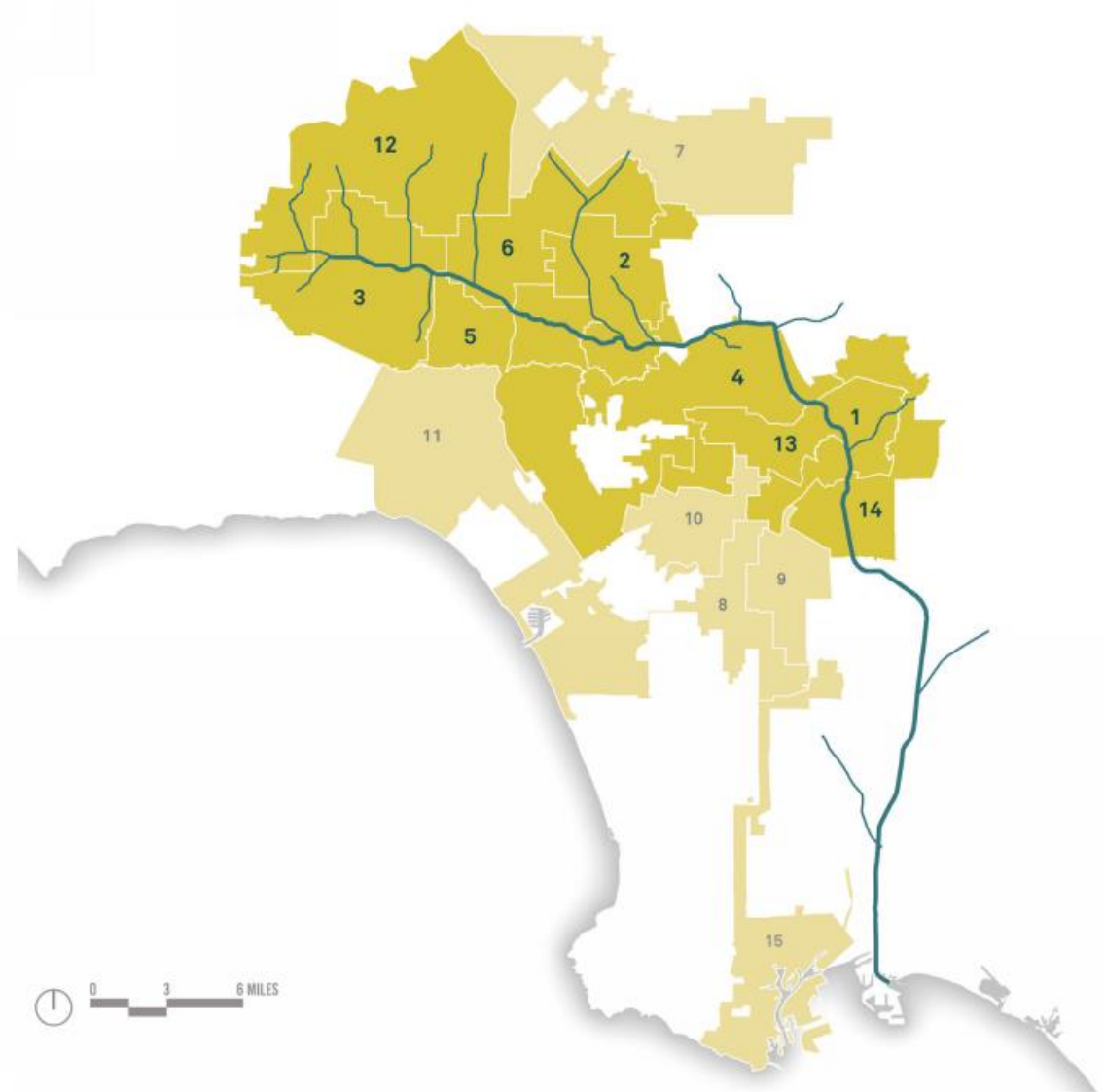
LOS ANGELES RIVER

LOS ANGELES RIVER WATERSHED

0 3 6 MILES



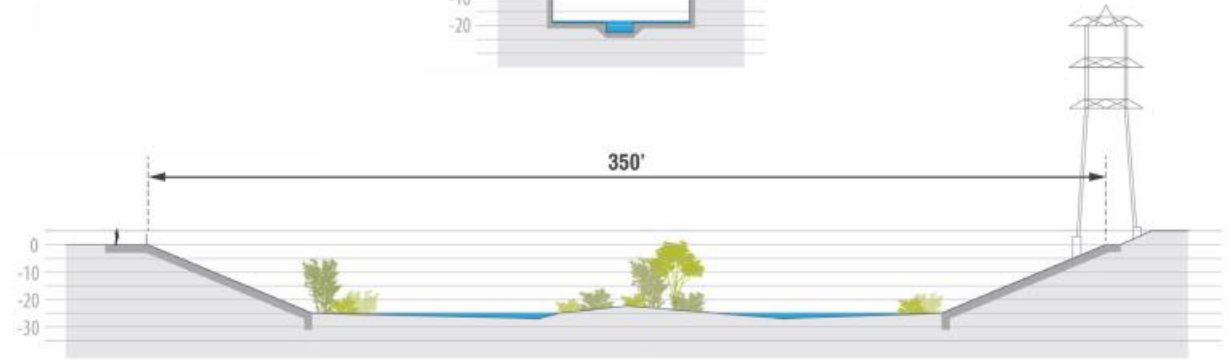
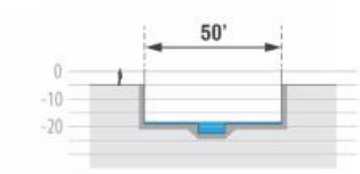
**CITIES ALONG THE LA RIVER**



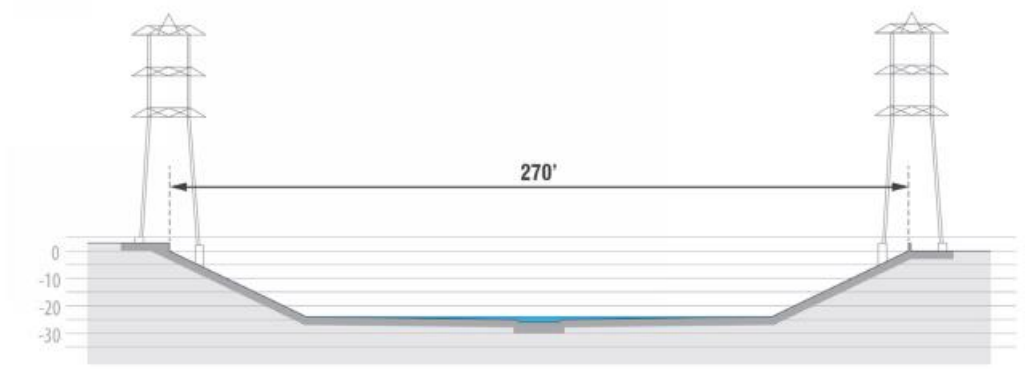
**CITY OF LA COUNCIL DISTRICTS**

# CHANNEL GEOMETRY

SAN FERNANDO VALLEY

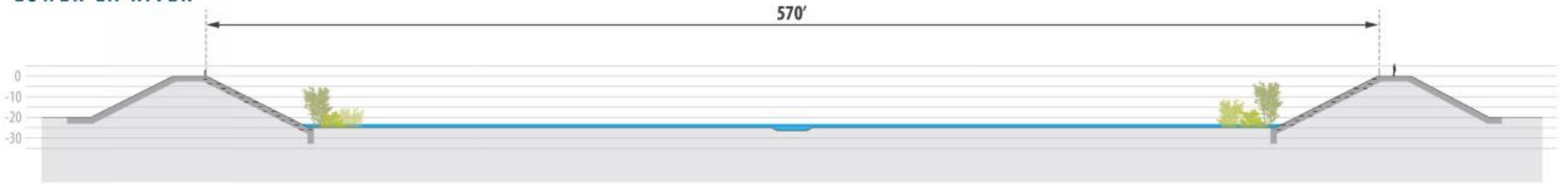


GLENDALE NARROWS



DOWNTOWN LOS ANGELES

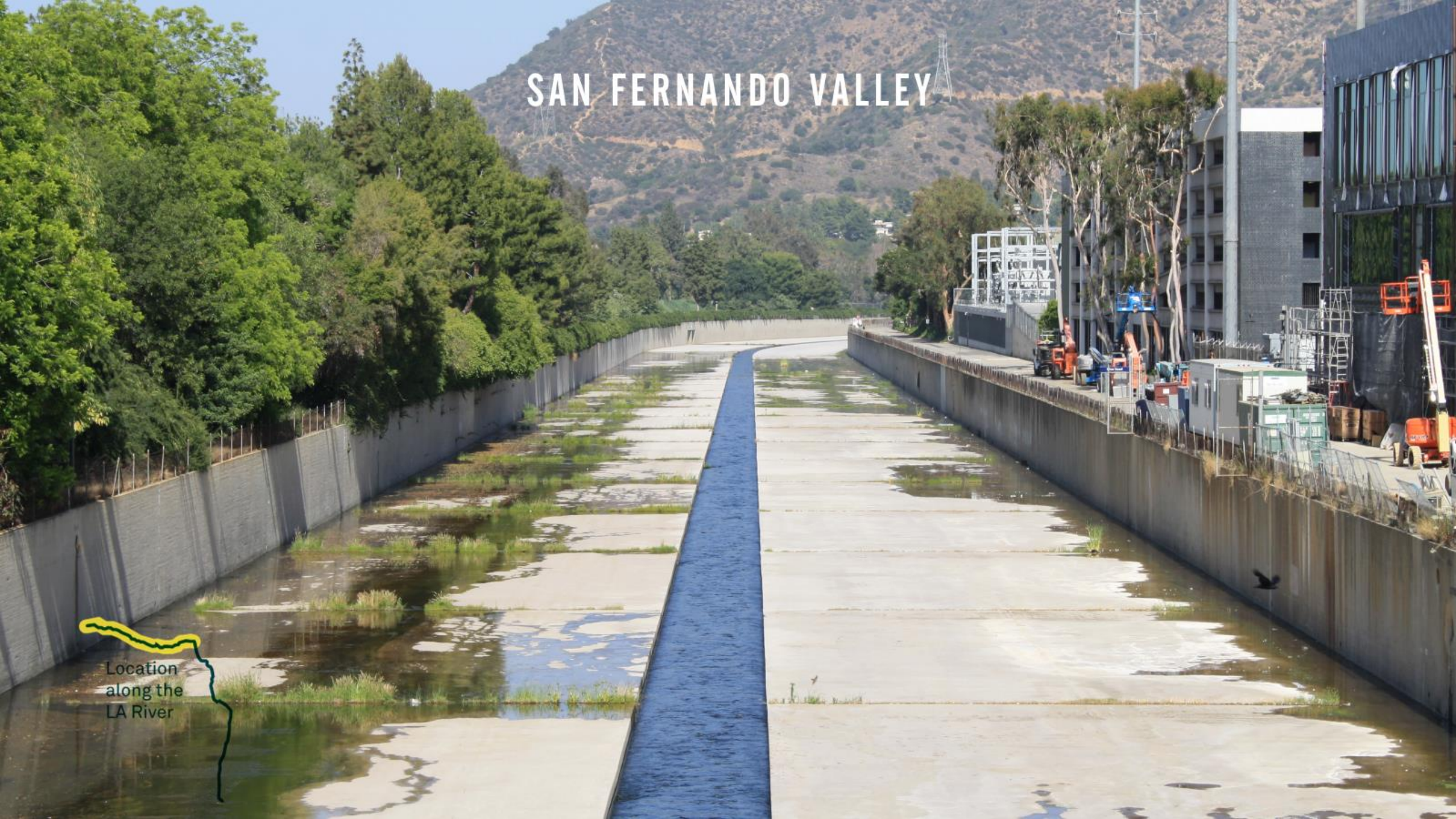
LOWER LA RIVER



# SAN FERNANDO VALLEY




Location  
along the  
LA River




# GLENDALE NARROWS

Location  
along the  
LA River



# DOWNTOWN LOS ANGELES

Location  
along the  
LA River



# LOWER RIVER | SOUTH OF LA



Location  
along the  
LA River





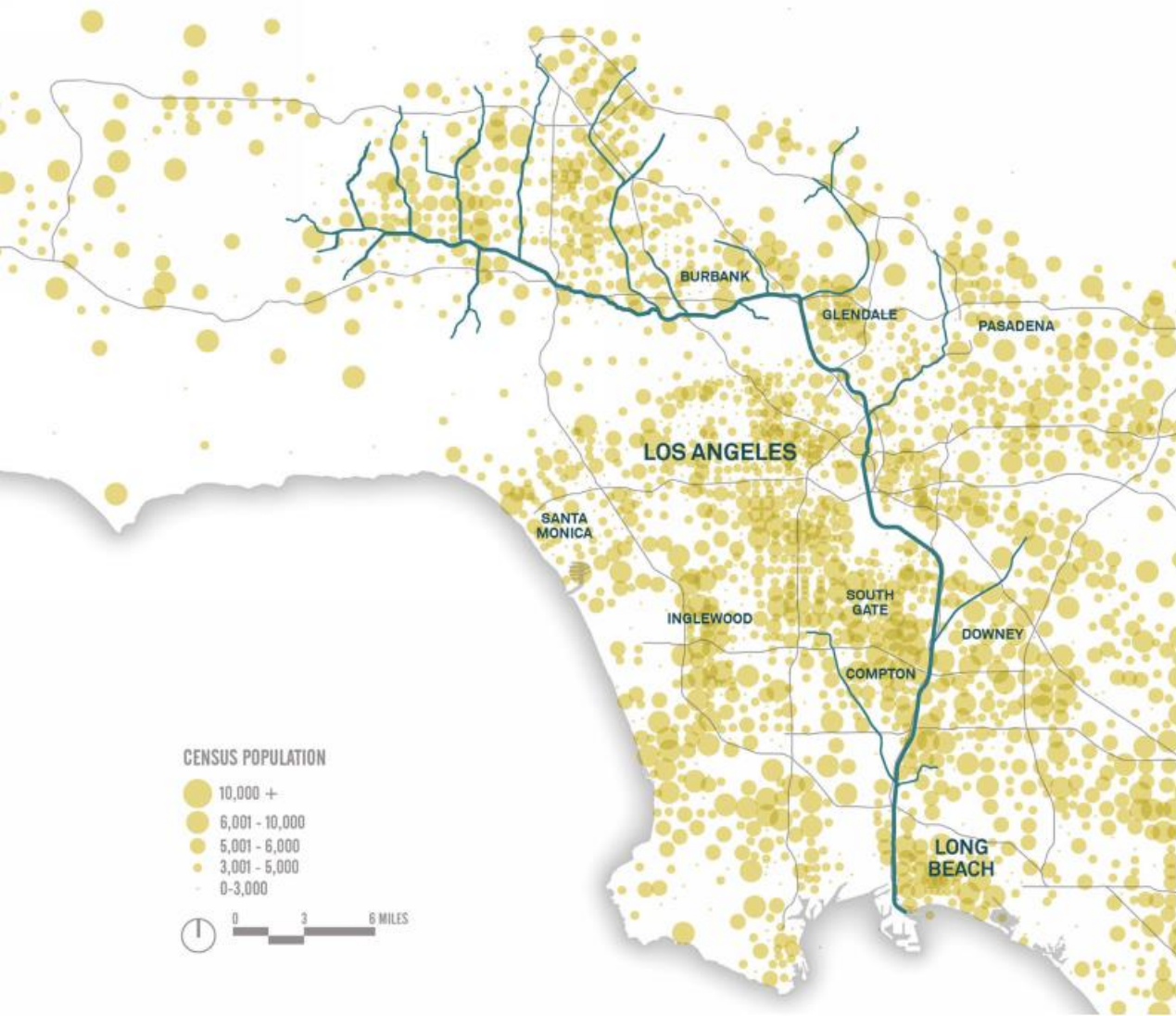
# PORT OF LONG BEACH



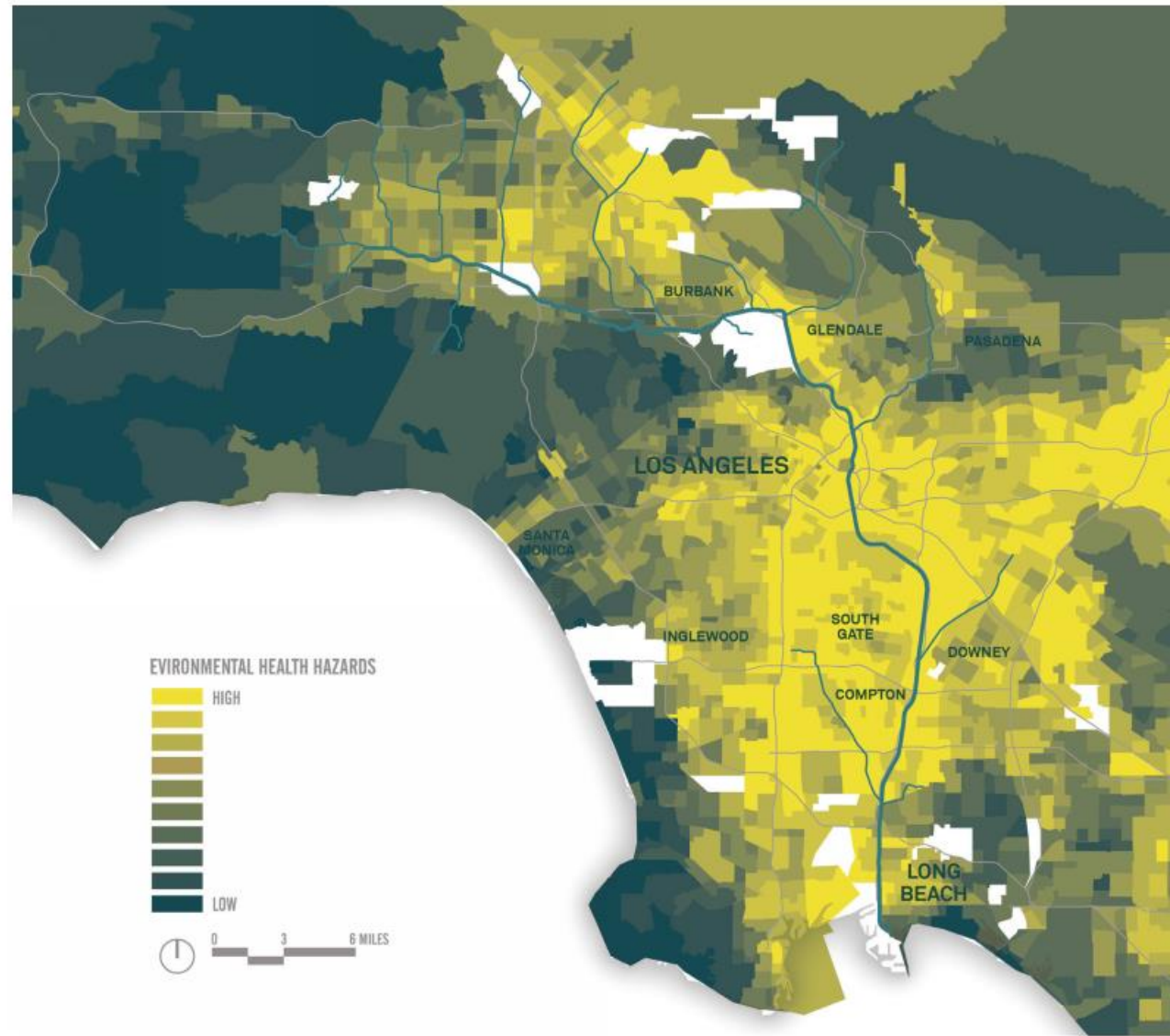
Location  
along the  
LA River







**POPULATION DENSITY**



**DISADVANTAGED COMMUNITIES**

# 51-MILE LA RIVER CORRIDOR

## WITHIN A 1 MILE BUFFER:

### People

- 900,000+ people
- 400,000+ live within 1-mile of the LA River (City of LA)

### Governance

- 8 of 15 LA City Council Districts are in the River Corridor
- 4 LA County Supervisorial Districts
- 16 Cities in River Corridor
- 3 major government partners

### Challenges

- Access
- Environmental
- Public Health Challenges
- Park and Open Space Needs
- 60% Disadvantaged Communities (DAC)



# COMMUNITY EMPOWERMENT

## LA RIVER REVITALIZATION MASTER PLAN

- Environmental Responsibility
- Social and Geographic Equity
- Community Engagement
- Sustainable Economics
- System-Wide Perspective

April 2007



LOS ANGELES RIVER REVITALIZATION MASTER PLAN

# COMMUNITY EMPOWERMENT

## LA RIVER REVITALIZATION MASTER PLAN

- Environmental Responsibility
- Social and Geographic Equity
- Community Engagement
- Sustainable Economics
- System-Wide Perspective



EXISTING



PROPOSED

# Ed. P Reyes Riverway





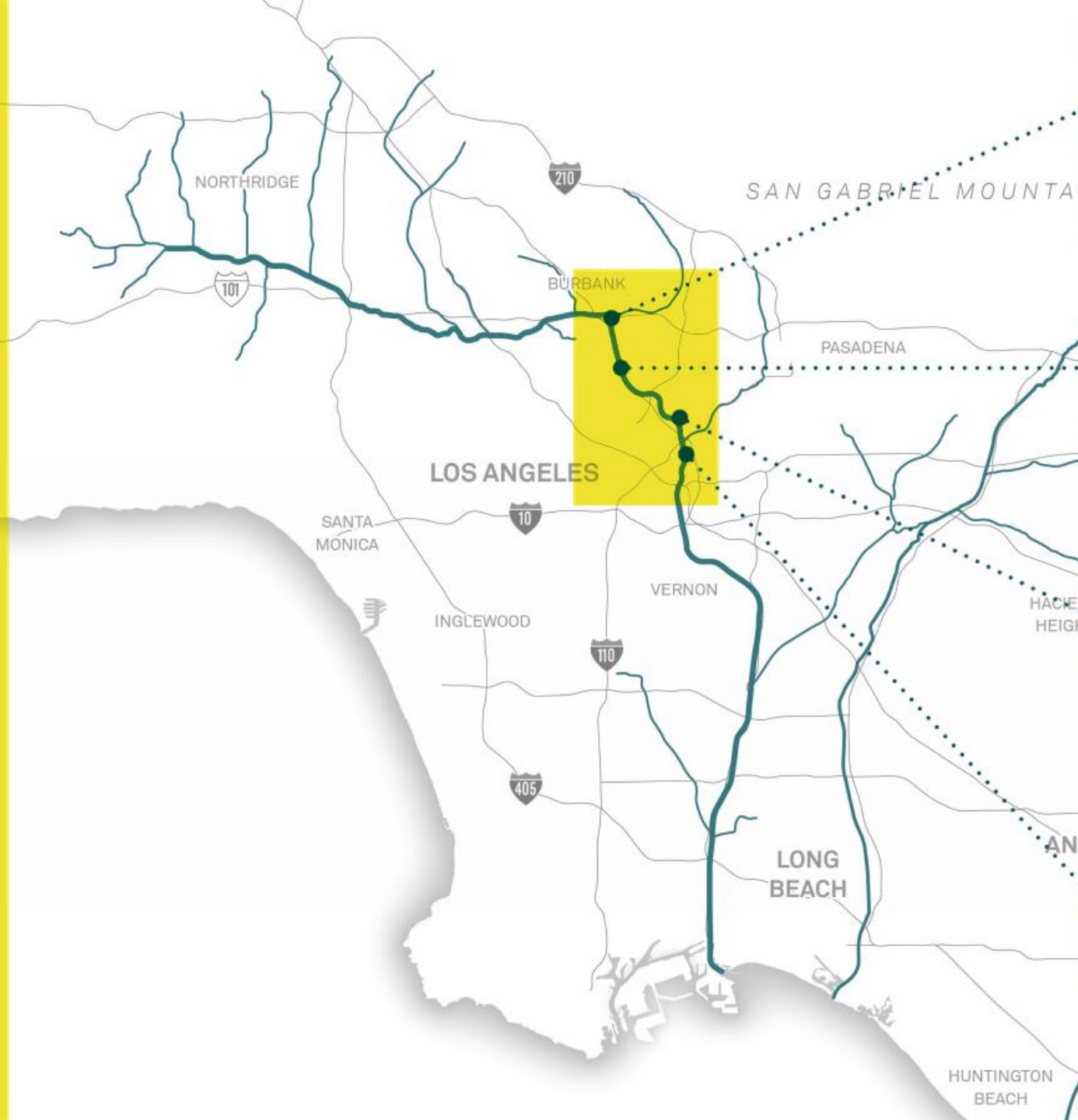
# North Atwater Park and Creek Restoration



# ACCESS TO NATURE

## 2013 ARMY CORPS' ARBOR STUDY

- Federal Partnership
- 11-miles, 8 reaches
- Identified in the 2007 Master Plan
- Channel Modifications
- Expands Floodplain & Riparian Habitat
- Increases Recreation Opportunities
- Increases Access
- Design of Reaches 7, 8 currently underway



## MAJOR OPPORTUNITY AREAS

### VERDUGO WASH CONFLUENCE



### CHANNEL MODIFICATION



### TAYLOR YARD G2 PARCEL



### LA STATE HISTORIC PARK / PIGGYBACK



# ARBOR Project (aka "Alternative 20")



Channel Terracing

Taylor Yard

Verdugo Wash

Arroyo Seco

LA State Historic Park (Cornfields)

Piggyback Yard (LATC)

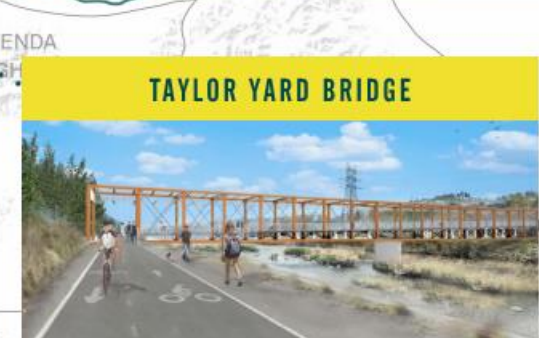
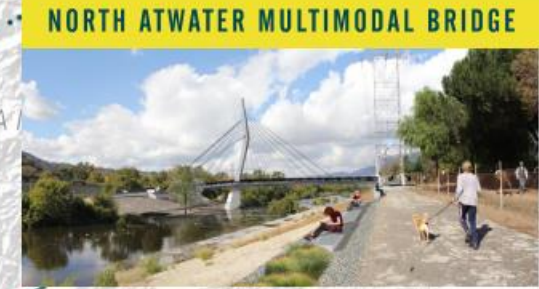
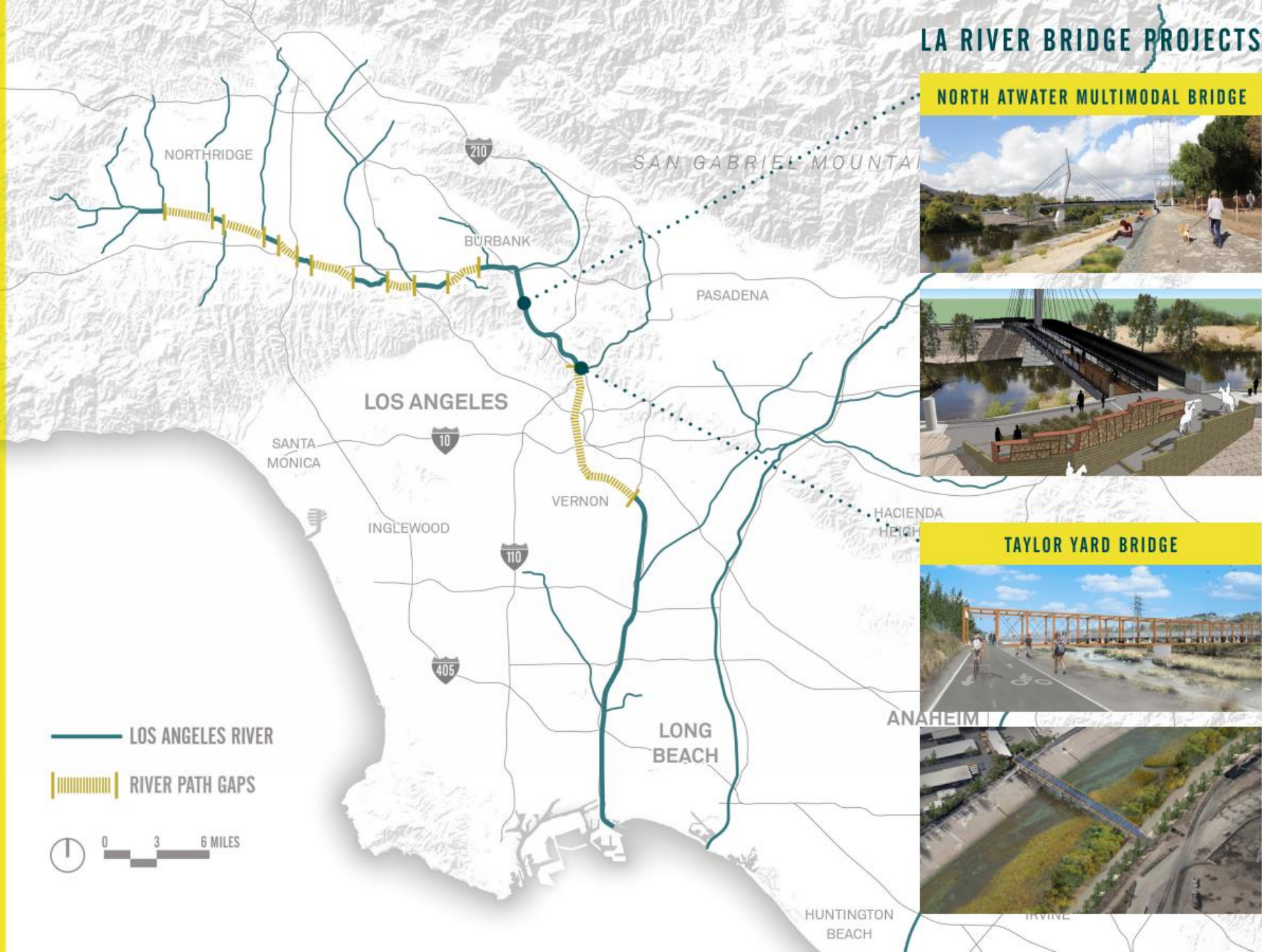
\* The numbers indicate river reaches (1-8).



# CONNECTIVITY

## LA RIVERWAY

- Regional Connectivity
- River Access
- Recreation and Open Space



# OPEN SPACE & ENVIRONMENTAL JUSTICE

## TAYLOR YARD G2 PARCEL

- Site desired as public park for over 20 years
- Brownfield Development
- 42 Acres
- Approx. \$60 mill purchase price
- 9+ acre multipurpose easement on G2





**Atwater Village**  
(15,455 residents)

**Glassell Park**  
(24,816 residents)

**Mount Washington**  
(13,531 residents)

**Silver Lake**  
(32,890 residents)

**Cypress Park**  
(10,854 residents)

**Elysian Valley**  
(7,781 residents)

**Echo Park**  
(43,832 residents)

**Total Adjacent Population:**  
**-149,159 residents**

Griffith Park  
Elysian Heights Elementary School

Atwater Avenue Elementary School

Ribet Academy Preschool

Glassell Park Elementary School

Mount Washington Elementary School

Allesandro Elementary School

Sotomayor Learning Academies

Elyria Park

Silver Lake Reservoir

G2

Rio de los Angeles State Park

Dorris Place Elementary School

Argon Avenue Elementary School

Clifford Street Elementary School

Elysian Heights Elementary School

Divine Saviour Elementary School

Nightingale Middle School

Elysian Park

Arroyo Seco

SAN FERNANDO BLVD

1 mile

0.5 miles

2 miles

0 600 1200 ft





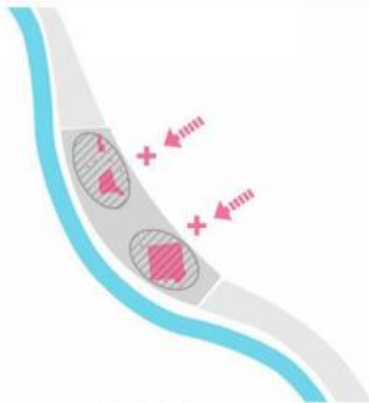
SOIL

WATER

HABITAT

CONNECTIVITY

LOW  
IMPACT



Fill & Monitor



Storm Water Capture / Store / Infiltrate



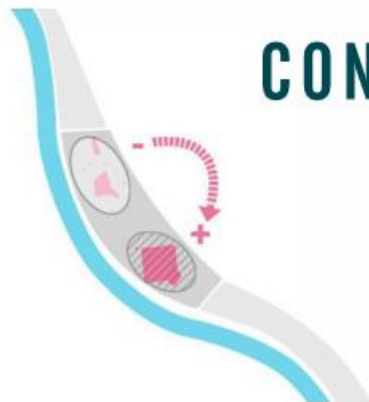
Ecotones



Rio De Los Angeles State Park

# CONSIDERING A SUITE OF SOLUTIONS

MEDIUM  
IMPACT



Cut & Fill & Monitor



Braid

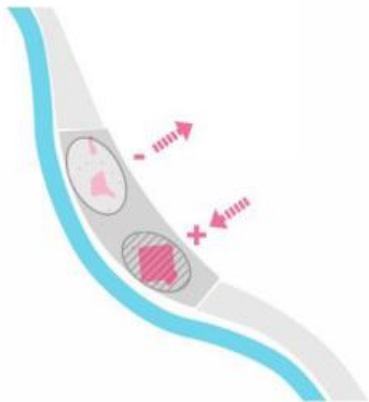


Micro-Climates



Adjacent Neighbourhoods

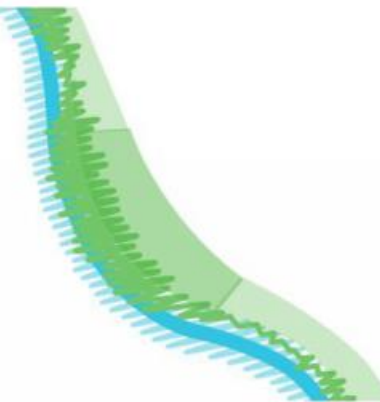
HIGH  
IMPACT



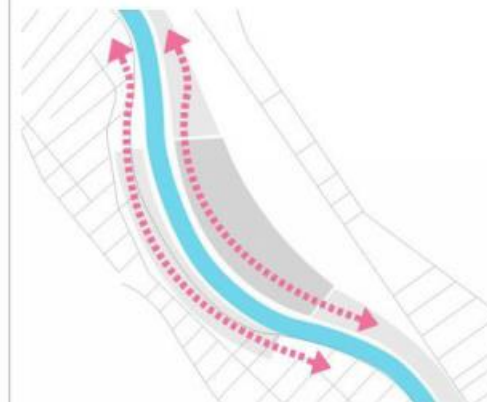
Cut & Export / Fill & Monitor



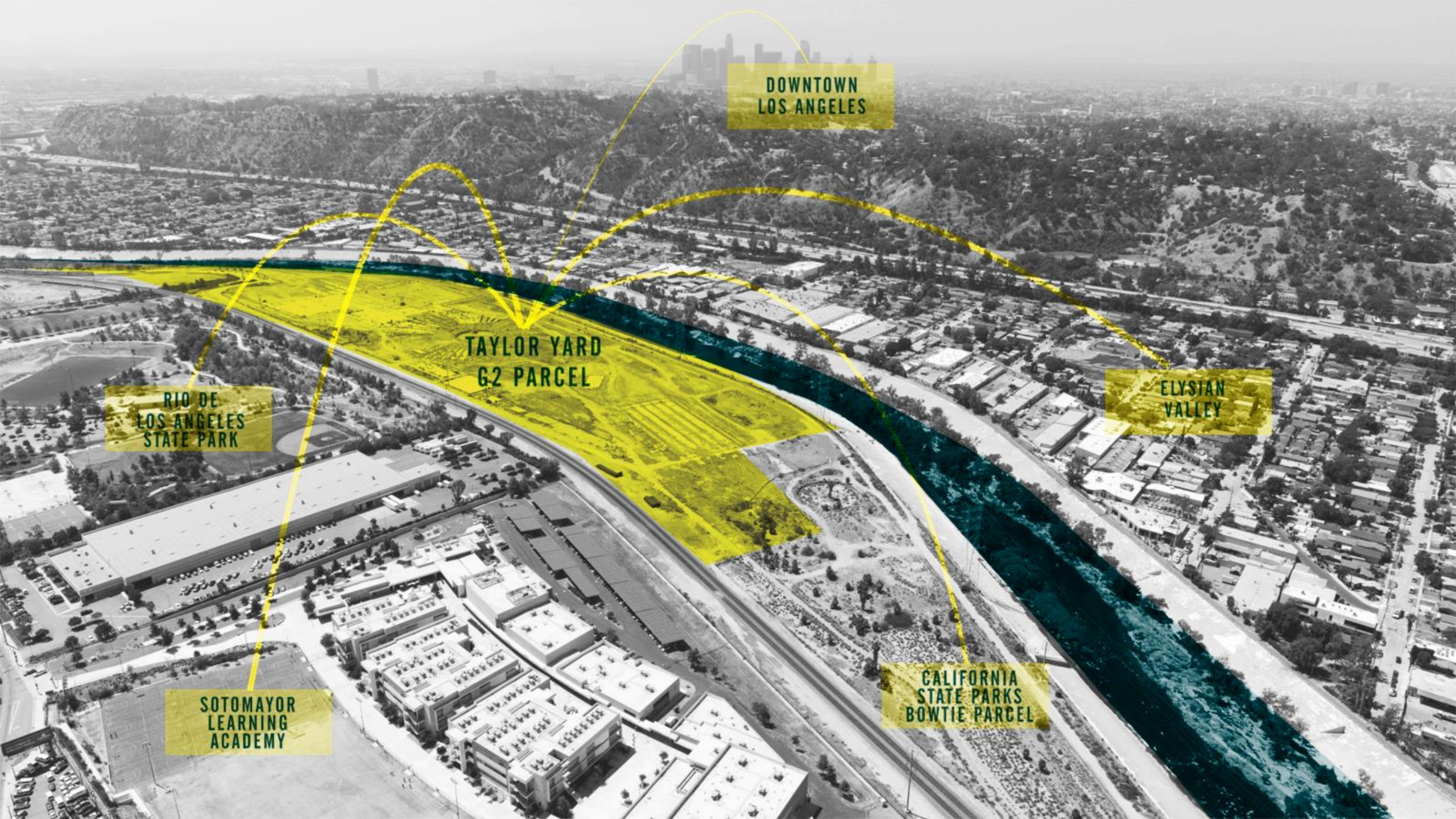
Floodplain Extension



Rewilding



LA River Network



**DOWNTOWN  
LOS ANGELES**

**TAYLOR YARD  
G2 PARCEL**

**RIO DE  
LOS ANGELES  
STATE PARK**

**ELYSIAN  
VALLEY**

**SOTOMAYOR  
LEARNING  
ACADEMY**

**CALIFORNIA  
STATE PARKS  
BOWTIE PARCEL**

# Maximize City Assets

**1931**

year the City-owned Art  
Deco structure was built

**~229**

thousand square feet

**6.9.17**

date RFP responses are due  
to the City's CAO



Lincoln Heights Jail

# Metabolic Studio's "Bending the River Back into the City" Project

## A vision for the L.A. River

Artist Lauren Bon is proposing a 70-foot water wheel that would divert water from the Los Angeles River to create a stream and a shady, landscaped retreat for the public, as well as an irrigation system for area parks.



# SUSTAINABLE INVESTMENT

## 6TH STREET VIADUCT

- Environmental Responsibility
- 450 million dollar project
- Connectivity Improvements
- River Access
- Multimodal Approach to Transportation
- Park and Recreation Amenities
- Water Management



# SUSTAINABLE INVESTMENT

## 670 MESQUIT

- Connectivity Improvements
- River Access
- Multimodal Approach to Transportation
- Park and Recreation Amenities





Michael Affeldt  
Director, LARiverWorks  
Office of Mayor Eric Garcetti  
[Michael.Affeldt@lacity.org](mailto:Michael.Affeldt@lacity.org)

Thank You