

**Item 8**

**Tentative Resolution No.**

**R9-2015-0008**

**Tentative**

**Basin Plan Amendment**

**Jody Ebsen & Fisayo Osibodu**

**San Diego Regional Water Quality Control Board**

**April 15, 2015**

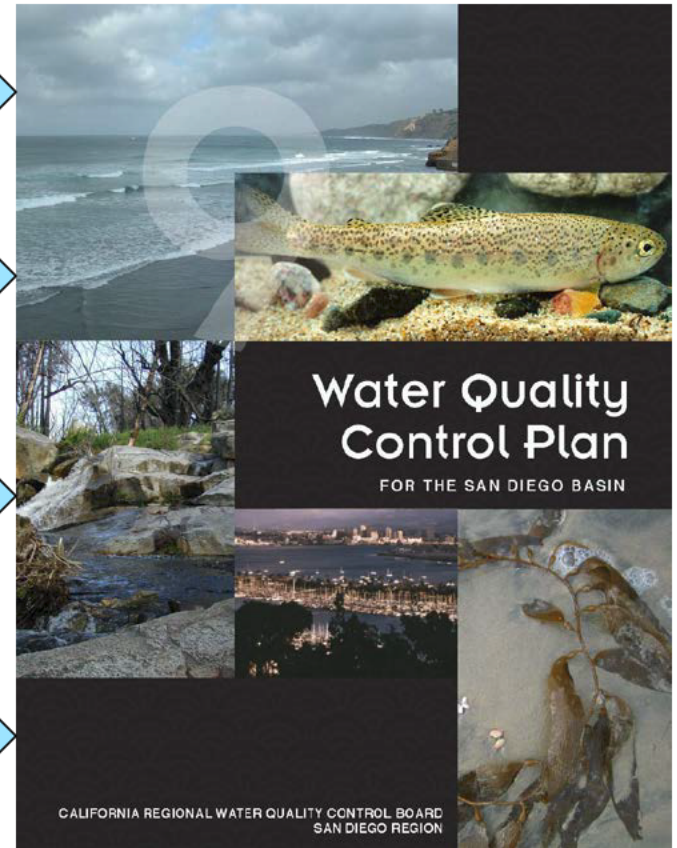
# Basin Plan Amendment

State Board Onsite Wastewater Treatment Systems (OWTS) Policy

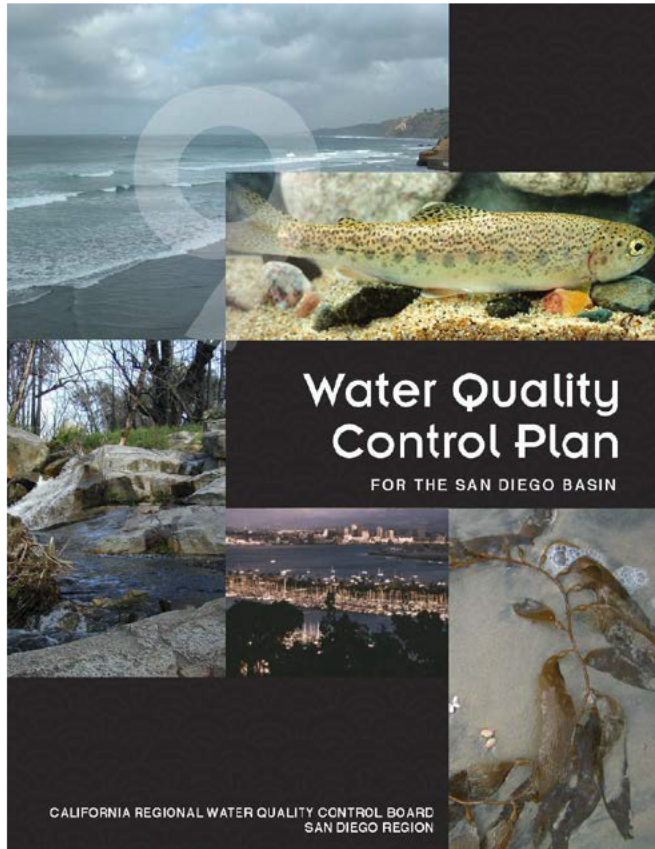
Water Quality Objectives for Nitrates in Groundwater

Implementation Plan Modifications for Issuance of Waste Discharge Requirements (WDRs)

Delete Expired Waivers of WDRs and Other Non-Substantive Changes



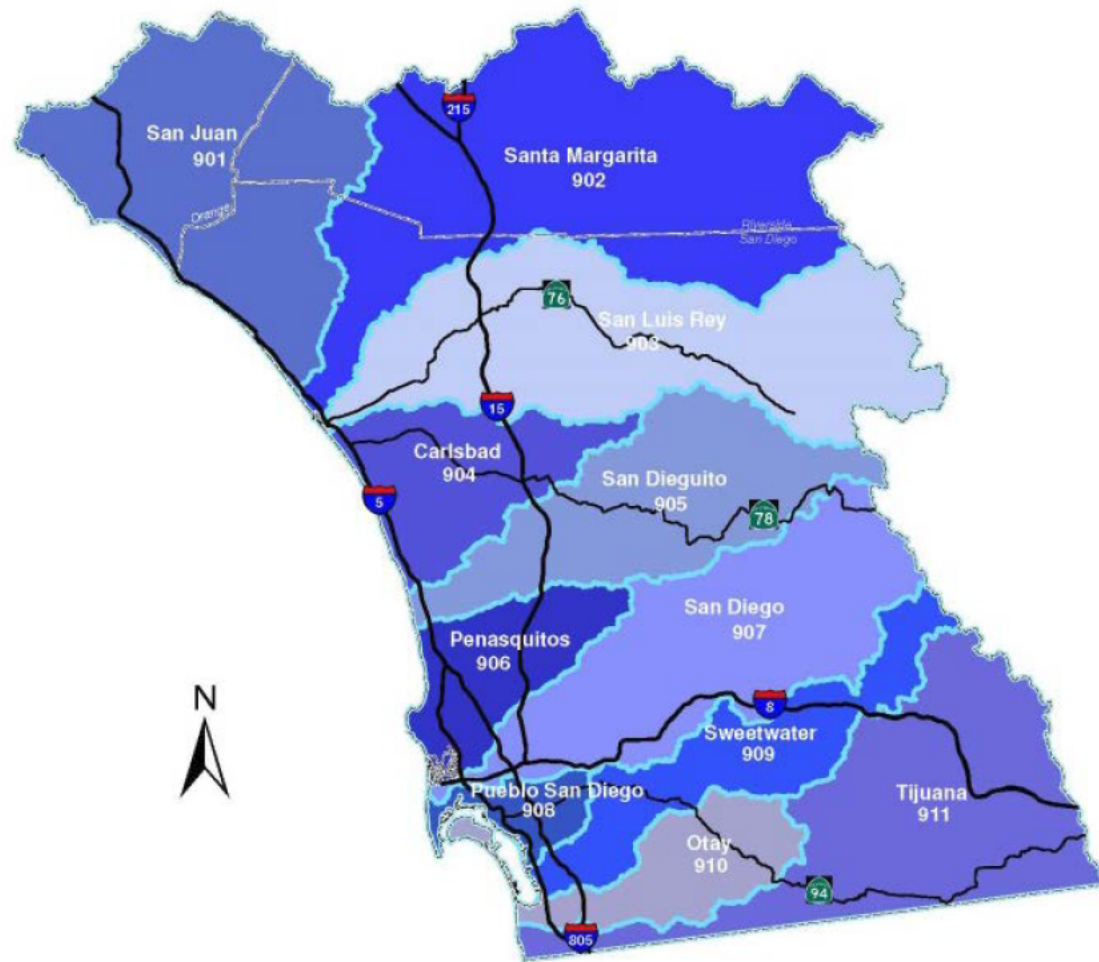
# San Diego Basin Plan



Designates:

- Beneficial Uses
- Water Quality Objectives
- Implementation Plans

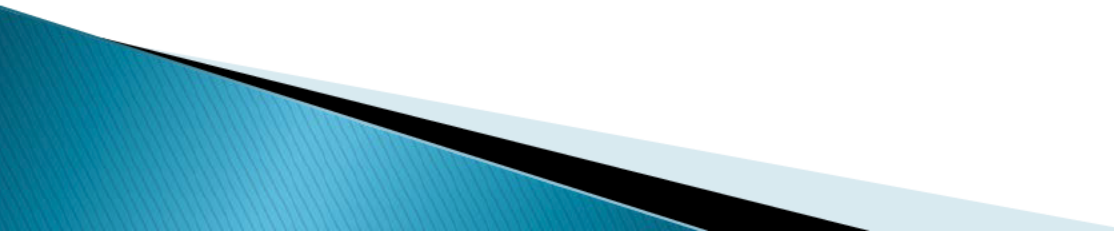
# San Diego Region Watersheds



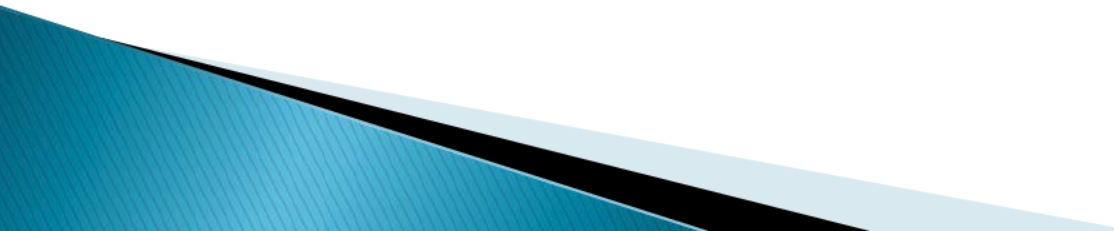
# Basin Plan Amendment Revisions

- ❑ Chapter 3 to Change Numeric Limits for Nitrate in Groundwater to 45 mg/L nitrate as NO<sub>3</sub>
- ❑ Chapter 4 to Incorporate OWTS Policy and Change Implementation Provisions for Interconnected Groundwater and Surface Waters.

# Basin Plan Amendment Revisions

- ❑ Chapter 5 to Update Existing Policies and Resolutions
  - ❑ Appendix D to Remove Expired WDR Waivers
  - ❑ Make Minor Non-Substantive Changes
- 

# Basin Plan Amendment Process

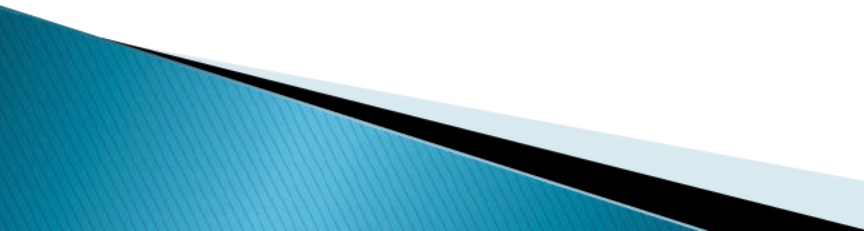
- ❑ Rule Making Process
  - ❑ Public Participation
  - ❑ CEQA Project
- 

# GEQA

- ▶ Prepared Substitute Environmental Documentation (SED)
- ▶ Analyses methods of compliance
- ▶ Project will not have significant impact on the environment
- ▶ Separate SED for OWTS Policy



# Public Participation Process

- ❑ Public Workshops
  - ❑ Developed Web Site – Posted Documents
  - ❑ Notified Interested Parties by Email
  - ❑ Published Hearing Notice in Newspapers
- 

**CEQA Scoping Meeting  
July 31, 2014**

**Draft BPA  
Documents Released  
December 23, 2014**

**Public Workshop  
January 23, 2015**

**Public Review  
Period Closed  
February 16, 2015**

**Responded to  
Comments &  
Revised BPA  
Documents  
April 1, 2015**

**Hold Regional  
Board Adoption  
Hearing  
April 15, 2015**

**State Board  
Approval**

**Office of  
Administrative  
Law (OAL)  
Approval**

**We are Here**

# Basin Plan Amendment Web Page

The screenshot shows a web browser window displaying the website for the San Diego Regional Water Quality Control Board. The browser's address bar shows the URL: [http://www.waterboards.ca.gov/sandiego/water\\_issues/programs/basin\\_plan/nitrate\\_owts\\_bpa](http://www.waterboards.ca.gov/sandiego/water_issues/programs/basin_plan/nitrate_owts_bpa). The website header includes the logo for the California Environmental Protection Agency and the San Diego Regional Water Quality Control Board. A navigation menu is visible with options like Home, About Us, Public Notices, Board Info, Board Decisions, Water Issues (highlighted), Publications/Forms, and Press Room. Below the navigation menu, there are sections for Hot Topics, Programs, and Available Documents. The main content area features a breadcrumb trail: Home → Water Issues → Programs → Basin Plan → Nitrate Owts Bpa. The title of the page is "Nitrate/OWTS Policy Basin Plan Amendment". There are sections for Quick Links, Introduction, and Email Subscriptions and Contact Information. The Introduction section states that the San Diego Water Board is responsible for the regulation, protection and administration of water quality and that the Basin Plan designates beneficial uses for water bodies in the San Diego Region. The Email Subscriptions section provides information on how to receive future updates by email.

Office of Governor  
**Edmund G. Brown Jr.**  
Visit his Website

→ Cal/EPA  
→ State & Regional Water Boards  
→ Laws/Regulations  
→ Plans/Policies  
→ Programs  
→ Decisions Pending and Opportunities for Public Participation

Water Quality  
Performance Report

**RESOURCES**

→ Email Subscriptions  
→ Data & Databases  
→ Business Help  
→ Public Records Center  
→ Grants & Loans  
→ Fees  
→ Customer Service Survey

Home → Water Issues → Programs → Basin Plan → Nitrate Owts Bpa

## Nitrate/OWTS Policy Basin Plan Amendment

**Quick Links**

[Home](#) | [Tentative Basin Plan Amendment](#) | [Announcements](#) | [Meetings and Workshops](#) |

**Introduction**

The [San Diego Water Board](#) is responsible for the regulation, protection and administration of water quality. The Water Quality Control Plan for the San Diego Basin ([Basin Plan](#)) designates beneficial uses for water bodies in the San Diego Region, and establishes water quality objectives and implementation plans to protect those beneficial uses.

Any change to the Basin Plan requires a Basin Plan amendment. All Basin Plan amendments are subject to a full public participation and hearing process prior to adoption by the San Diego Water Board. Basin Plan amendments also must be approved by the State Water Resources Control Board (State Water Board), Office of Administrative Law (OAL) and, in many cases, the US Environmental Protection Agency (USEPA).

The San Diego Water Board is considering changes to the Basin Plan and has made available a draft Basin Plan amendment and supporting documents in December 2014. To learn about future meetings click on "[Announcements](#)" or to learn about available documents click on the "[Tentative Basin Plan Amendment](#)".

**Email Subscriptions and Contact Information**

To receive future updates by email subscribe to the "[Basin Planning Issues](#)" email list on our [Email Subscriptions](#) web page.

**Contacts**

For additional information contact Jody Ebsen at (619) 521-3965 or at [Jody.Ebsen@waterboards.ca.gov](mailto:Jody.Ebsen@waterboards.ca.gov).

[http://www.waterboards.ca.gov/sandiego/water\\_issues/programs/basin\\_plan/nitrate\\_owts\\_bpa](http://www.waterboards.ca.gov/sandiego/water_issues/programs/basin_plan/nitrate_owts_bpa)

# Changes to the Basin Plan

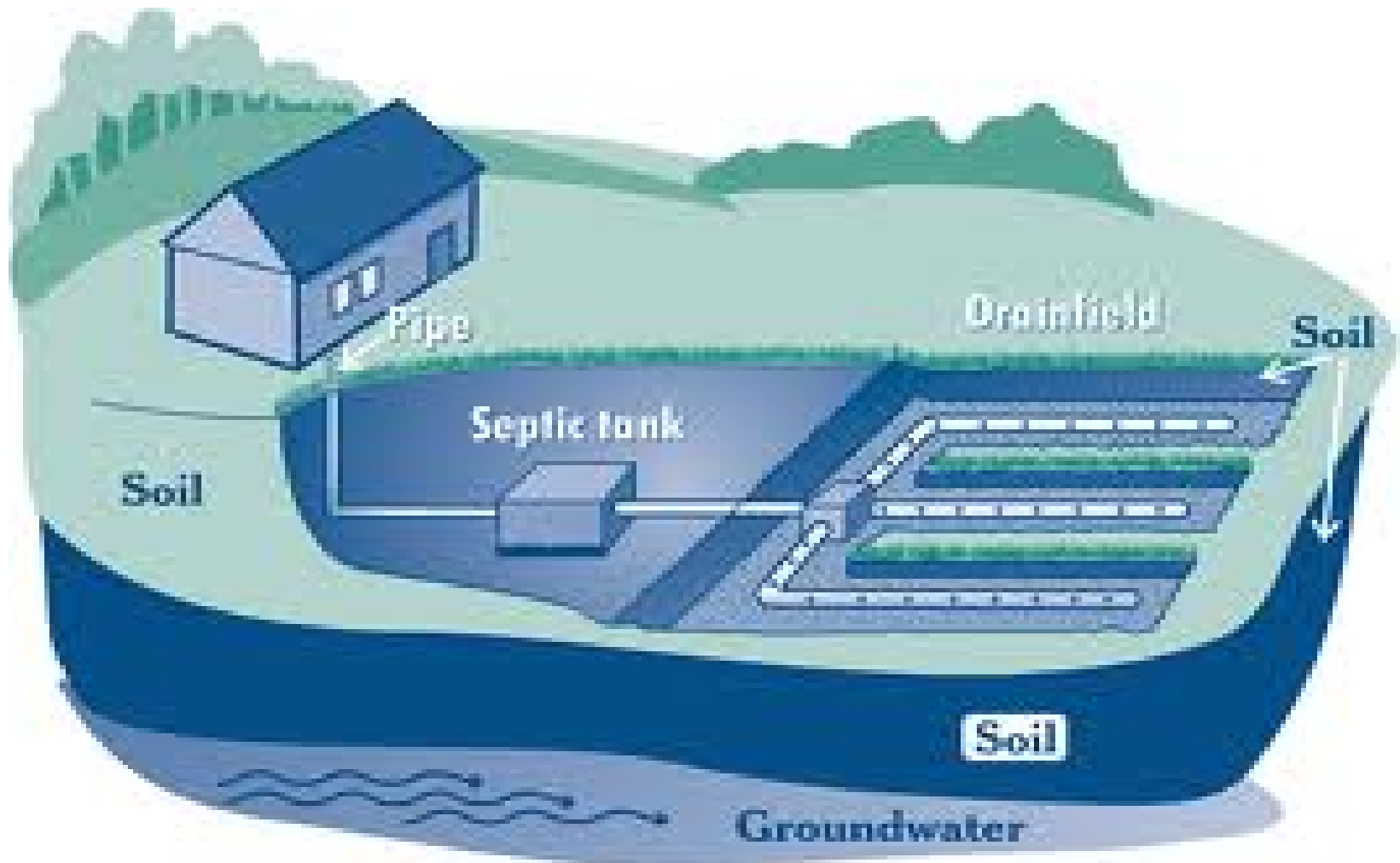
## Regulatory (Key) Changes

- ▶ Incorporates OWTS Policy
- ▶ Changes the nitrate water quality objective
- ▶ Adds implementation measures

## Nonsubstantive Changes

- ▶ Adds descriptions of policies
- ▶ Deletes expired waivers
- ▶ Other changes

# Conventional Septic Tank/Leach Field



**Set-N-Go®**



- A** Pre-treatment/Waste Tank
- B** Aerobic Treatment Unit (ATU) Waste Treatment
- C** Pump/Dosing Tank

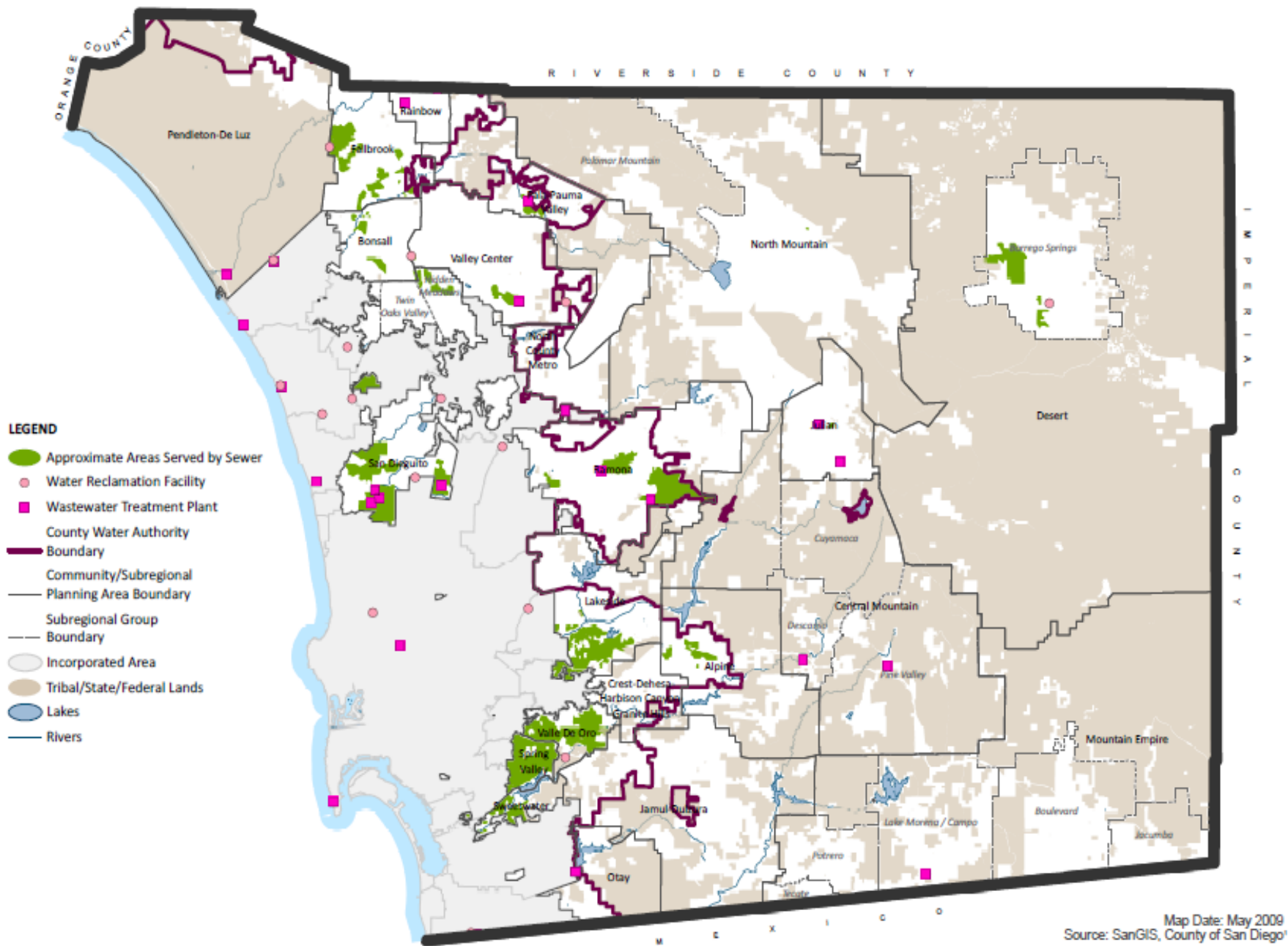
**Aerobic Treatment Unit**



**Fabric Trickling Filter**



**Peat Media Filter**



# AREAS SERVED BY SEWER

Map Date: May 2009  
 Source: SanGIS, County of San Diego



# Flow Limits/Restrictions

Current Basin Plan	OWTS Policy
Waives WDRs for conventional OWTS less than 1,200 gpd or serving five family units or less.	Waives WDRs for New OWTS less than 3,500 gpd or existing less than 10,000 gpd.



# Conditions for Waiving Larger Projects

Current Basin Plan	OWTS Policy
<ul style="list-style-type: none"><li>• Comply with county design criteria.</li><li>• Cumulative impacts must not adversely affect beneficial uses of groundwater.</li></ul>	<ul style="list-style-type: none"><li>• Meet siting and design criteria in Policy or Local Agency Management Plan (LAMP).</li><li>• Such as setbacks, depth to groundwater, wastewater application rates, lot sizes</li></ul>

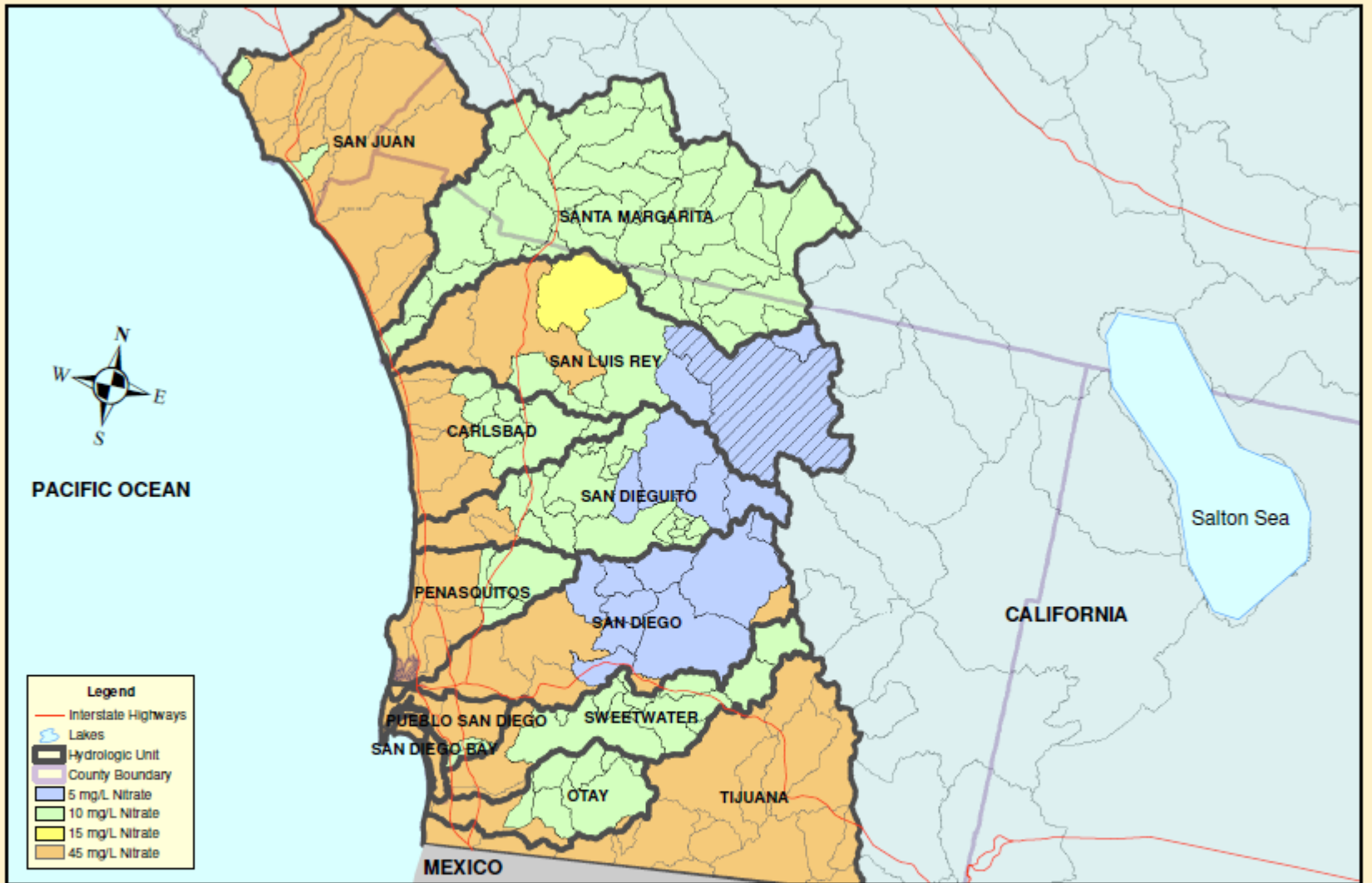
# Requirements for Advanced Systems

## Current Basin Plan

No requirements for waiving Advanced systems.

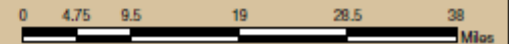
## OWTS Policy

- Advanced systems can be waived.
- San Diego LAMP includes requirements for advanced systems.



## Groundwater Nitrate Water Quality Objective by HSA

Prepared by Hiram Sarabia

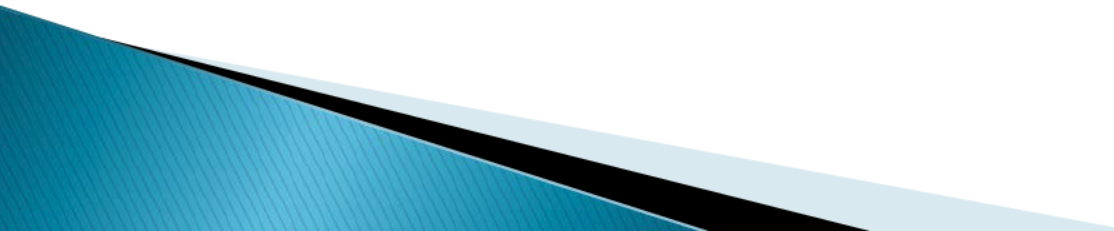


# Why Change the Nitrate WQO?

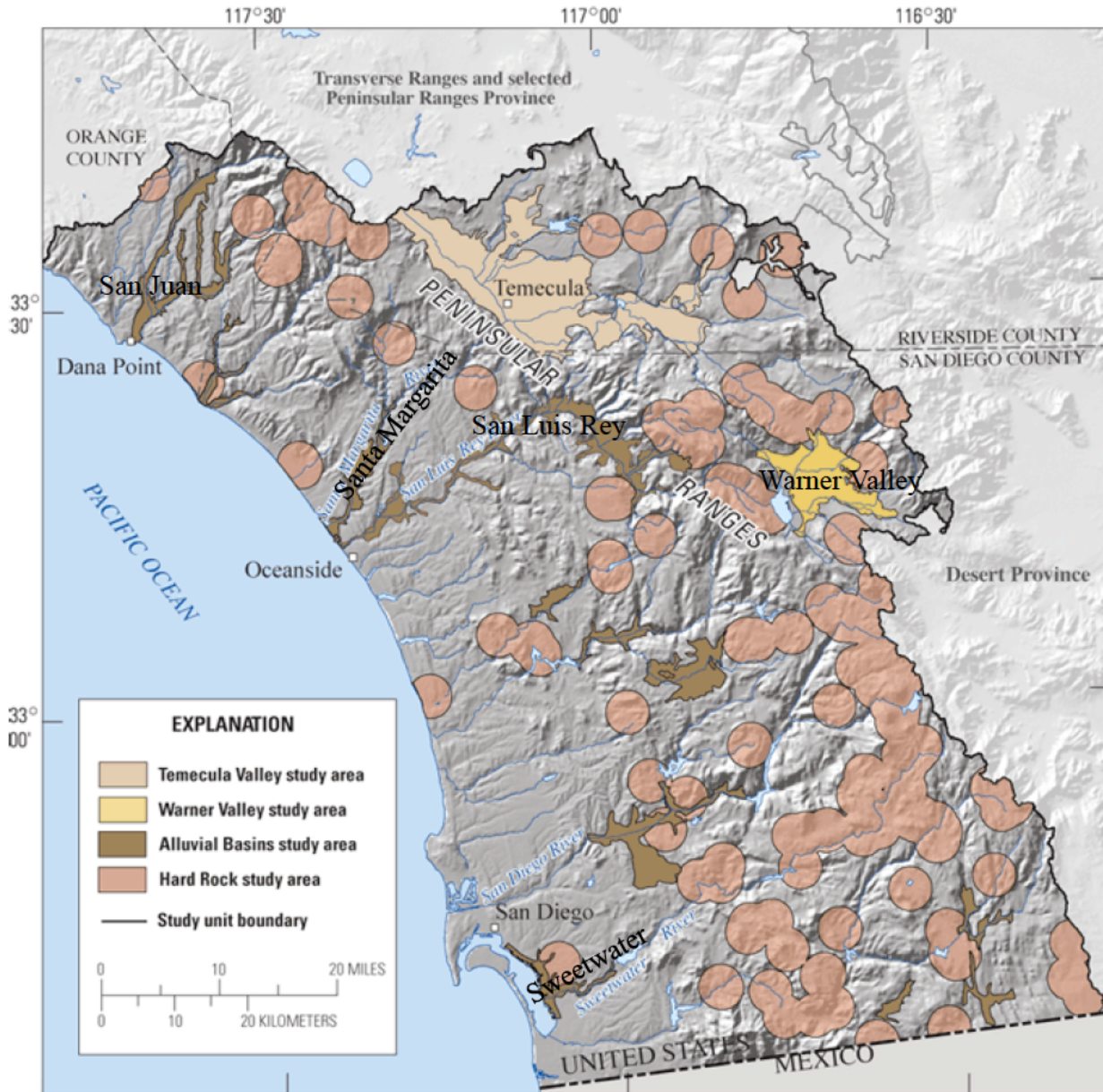
- Facilitate incorporation of OWTS Policy
- Waive WDRs for qualifying OWTS
- Promote increased use of recycled water
- Reduce cost of recycled water



# Why Revise the Nitrate WQO to 45 mg/L?

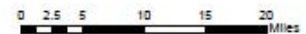
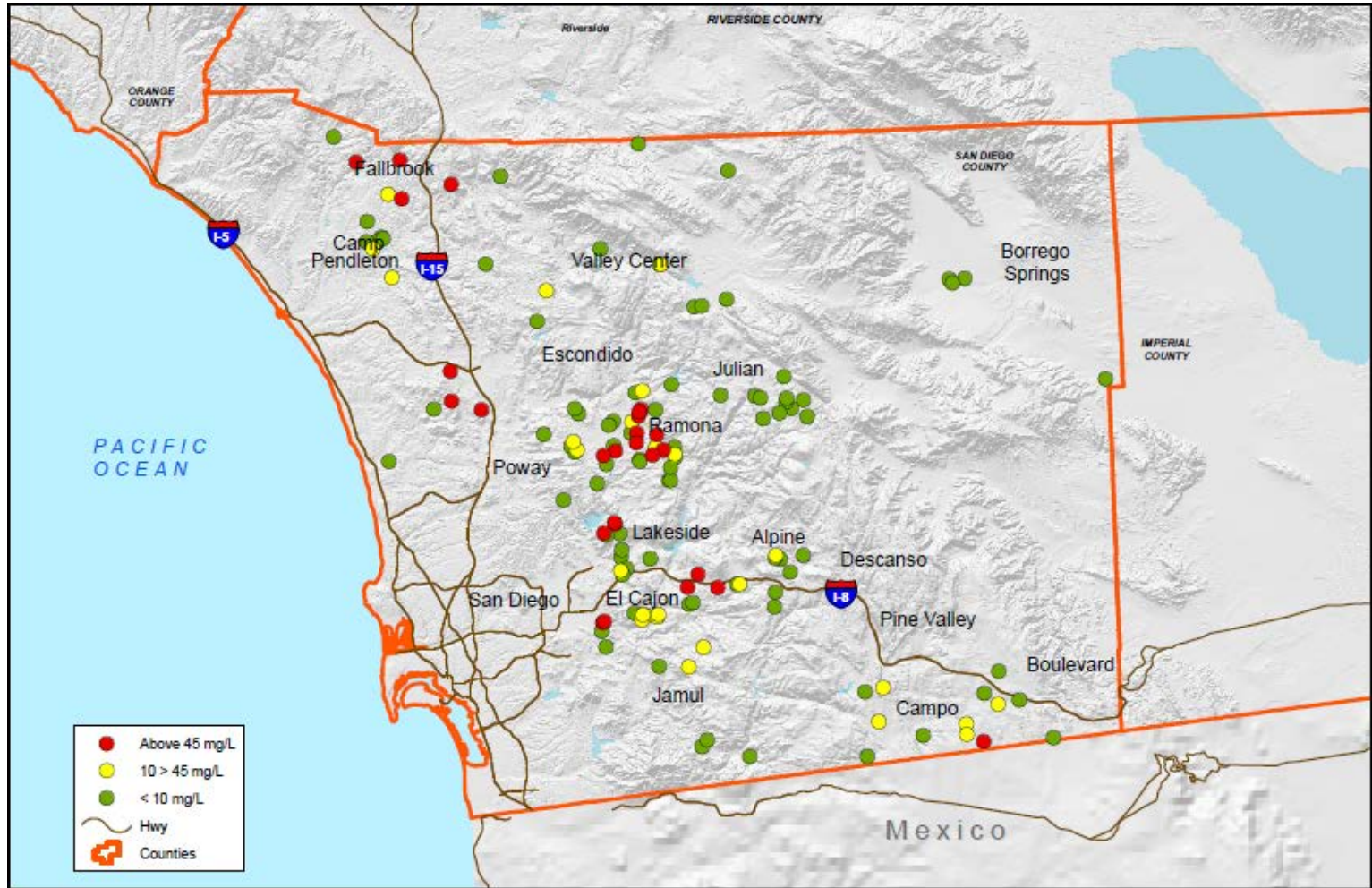
- 45 mg/L is protective of beneficial uses
  - MCL is protective of sensitive populations
  - More stringent effluent limits-individual WDRs
  - Consistent with OWTS Policy
- 

# GAMA Public Well Study (2004)



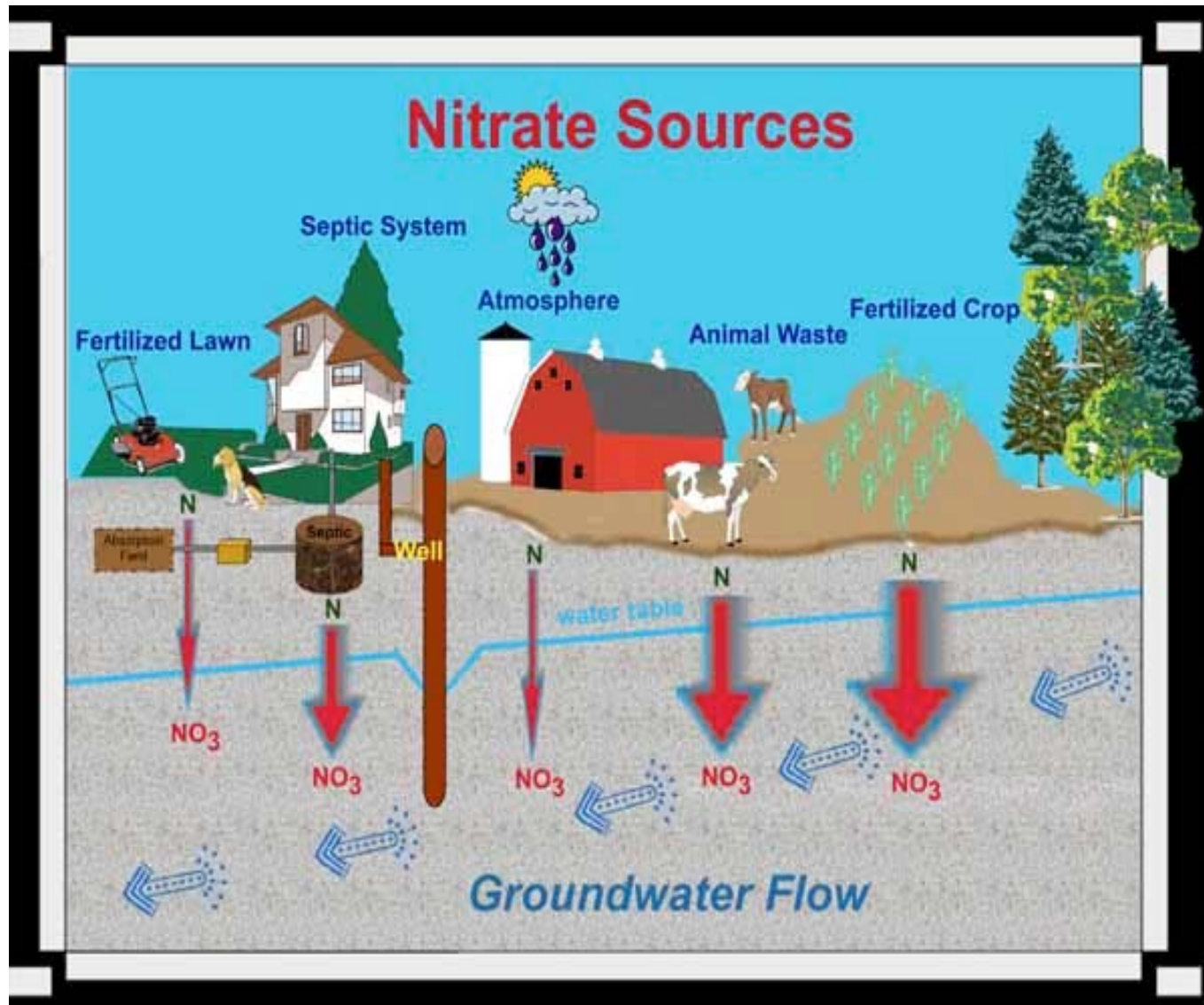
- Nitrate detected in 17 of 24 wells
- All below 45mg/L

# GAMA Domestic Well Study (2010)



- Nitrate detected in 96 of 137 wells
- Above MCL in 25 wells

# Contributors of Nitrate to Groundwater

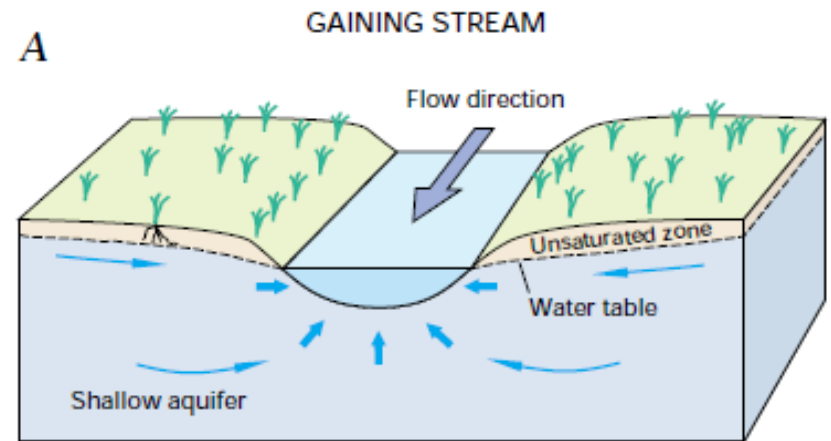




# Groundwater/Surface Water Interaction

Implementation Measures  
for Discharges From:

- Wastewater Treatment Plants
- Agricultural and Nursery Operations
- Animal Feeding Operations
- Recycled Water Discharges





The End  
Questions /Comments

