



California Regional Water Quality Control Board San Diego Region



Arnold
Schwarzenegger
Governor

Linda S. Adams
Secretary for
Environmental
Protection

Over 50 Years Serving San Diego, Orange, and Riverside Counties
Recipient of the 2004 Environmental Award for Outstanding Achievement from USEPA

9174 Sky Park Court, Suite 100, San Diego, California 92123-4340
(858) 467-2952 • Fax (858) 571-6972
[http:// www.waterboards.ca.gov/sandiego](http://www.waterboards.ca.gov/sandiego)

March 3, 2009

In reply refer to: WPS:08C-065:JEbsen

Certified Mail Number:
7008 1140 0002 8456 9854

Lorrie Bradley
County of San Diego
5469 Kearny Villa Road, Suite 305
San Diego, CA 92123

WDID	9 000001831
CIWQS:	
Place	725939
Reg. Measure	351905
Party	246999
Person	399949

Dear Ms. Bradley:

SUBJECT: Action on Request for Clean Water Act Section 401 Water Quality Certification for the Tavern Road Drainage Improvement Project Water Quality Certification No. 08C-065.

Enclosed find Clean Water Act Section 401 Water Quality Certification (Certification) with acknowledgment of enrollment under State Water Resources Control Board Order No. 2003-017 DWQ for Statewide General Waste Discharge Requirements for Dredged or Fill Discharges that have received State Water Quality Certification for the Tavern Road Drainage Improvement Project. A description of the project and location can be found in the project information sheet and on location and site maps compiled by the California Regional Water Quality Control Board, San Diego Region (Regional Board), which are included as Attachments 1 through 5.

Any petition for reconsideration of this Certification must be filed with the State Water Resources Control Board within 30 days of certification action (23 CCR § 3867). If no petition is received, it will be assumed that you have accepted and will comply with all the conditions of this Certification.

Failure to comply with all conditions of this Certification may subject you to enforcement actions by the Regional Board including administrative enforcement orders requiring you to cease and desist from violations, or to clean up waste and abate existing or threatened conditions of pollution or nuisance; administrative civil liability in amounts of up to \$10,000 per day per violation; referral to the State Attorney General for injunctive relief; and, referral to the District Attorney for criminal prosecution.

The heading portion of this letter includes a Regional Board code number noted after "In reply refer to." In order to assist us in the processing of your correspondence please

California Environmental Protection Agency

The energy challenge facing California is real. Every Californian needs to take immediate action to reduce energy consumption. For a list of simple ways you can reduce demand and cut your energy costs, see our Web-site at <http://www.swrcb.ca.gov>.

Recycled Paper



3 / 5 / 2009

Ms. Lorrie Bradley
County of San Diego
401 Certification 08C-065

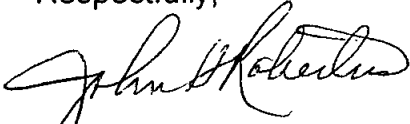
- 2 -

March 3, 2009

include this code number in the heading or subject line portion of all correspondence and reports to the Regional Board pertaining to this matter.

If you have any questions regarding this notification, please contact Ms. Jody Ebsen directly at 858-636-3146 or by email via jebsen@waterboards.ca.gov.

Respectfully,



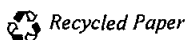
JOHN H. ROBERTUS
Executive Officer

Enclosures:

Clean Water Act Section 401 Water Quality Certification No. 08C-065 for Tavern Road Drainage Improvement Project, with 6 attachments

cc: Refer to Attachment 2 of Certification 08C-065 for Distribution List.

California Environmental Protection Agency



6002 / 5 / 3



Linda S. Adams
Acting Secretary for
Environmental
Protection

California Regional Water Quality Control Board San Diego Region



Arnold
Schwarzenegger
Governor

Over 50 Years Serving San Diego, Orange, and Riverside Counties
Recipient of the 2004 Environmental Award for Outstanding Achievement from USEPA

9174 Sky Park Court, Suite 100, San Diego, California 92123-4340
(858) 467-2952 • Fax (858) 571-6972
[http:// www.waterboards.ca.gov/sandiego](http://www.waterboards.ca.gov/sandiego)

Action on Request for
Clean Water Act Section 401 Water Quality Certification
and Waste Discharge Requirements
for Discharge of Dredged and/or Fill Materials

**PROJECT: Tavern Road Drainage Improvement Project,
Certification No. 08C-065, WDID No. 9000001831**

**APPLICANT: County of San Diego
5469 Kearny Villa Road, Suite 305
San Diego, CA 92123
Attention: Lorrie Bradley**

CIWQS Reg. Mes. ID: 351905 Place ID: 725939 Party ID: 246999

ACTION:

<input type="checkbox"/> Order for Low Impact Certification	<input type="checkbox"/> Order for Denial of Certification
<input checked="" type="checkbox"/> Order for Technically-conditioned Certification	<input type="checkbox"/> Waiver of Waste Discharge Requirements
<input checked="" type="checkbox"/> Enrollment in SWRCB GWDR Order No. 2003-017 DWQ	<input type="checkbox"/> Enrollment in Isolated Waters Order No. 2004-004 DWQ

PROJECT DESCRIPTION: The project is to replace and improve a drainage facility to increase the capacity for a 100 year flood, which includes installing a 6x3 foot double box culvert that is approximately 127 feet in length at the intersection of Tavern Road and Arnold Way in Alpine.

STANDARD CONDITIONS:

The following three standard conditions apply to all Certification actions, except as noted under Condition 3 for denials (Action 3).

1. This Certification action is subject to modification or revocation upon administrative or judicial review, including review and amendment pursuant to section 13330 of the California Water Code and section 3867 of Title 23 of the California Code of Regulations (23 CCR).

California Environmental Protection Agency

The energy challenge facing California is real. Every Californian needs to take immediate action to reduce energy consumption. For a list of simple ways you can reduce demand and cut your energy costs, see our Web-site at <http://www.swrcb.ca.gov>.

Recycled Paper



6002 / 5 / 5

2. This Certification action is not intended and must not be construed to apply to any discharge from any activity involving a hydroelectric facility requiring a Federal Energy Regulatory Commission (FERC) license or an amendment to a FERC license unless the pertinent Certification application was filed pursuant to 23 CCR subsection 3855(b) and the application specifically identified that a FERC license or amendment to a FERC license for a hydroelectric facility was being sought.
3. The validity of any non-denial Certification action (Actions 1 and 2) must be conditioned upon total payment of the full fee required under 23 CCR section 3833, unless otherwise stated in writing by the certifying agency.

ADDITIONAL CONDITIONS:

In addition to the three standard conditions, the County of San Diego must satisfy the following:

A. GENERAL CONDITIONS:

1. The County of San Diego must, at all times, fully comply with the engineering plans, specifications and technical reports submitted to the California Regional Water Quality Control Board, San Diego Region (Regional Board), to support this 401 Water Quality Certification (Certification) and all subsequent submittals required as part of this Certification and as described in Attachment 1. The conditions within this Certification must supersede conflicting provisions within such plans submitted prior to the Certification action. Any modifications thereto, would require notification to the Regional Board and reevaluation for individual Waste Discharge Requirements and/or Certification amendment.
2. During construction, the County of San Diego must maintain a copy of this Certification at the project site so as to be available at all times to site personnel and agencies.
3. County of San Diego must permit the Regional Board or its authorized representative at all times, upon presentation of credentials:
 - a. Entry onto project premises, including all areas on which wetland fill or wetland mitigation is located or in which records are kept.
 - b. Access to copy any records required to be kept under the terms and conditions of this Certification.
 - c. Inspection of any treatment equipment, monitoring equipment, or monitoring method required by this Certification.
 - d. Sampling of any discharge or surface water covered by this Order.

4. The County of San Diego must notify the Regional Board within 24 hours of any unauthorized discharge, including hazardous or toxic materials, to waters of the U.S. and/or State; measures that were implemented to stop and contain the discharge; measures implemented to clean-up the discharge; the volume and type of materials discharged and recovered; and additional best management practice (BMPs) or other measures that will be implemented to prevent future discharges.
5. The County of San Diego must, at all times, maintain appropriate types and sufficient quantities of materials onsite to contain any spill or inadvertent release of materials that may cause a condition of pollution or nuisance if the materials reach waters of the U.S. and/or State.
6. This Certification is not transferable to any person except after notice to the Executive Officer of the Regional Board. The County of San Diego must notify the Regional Board of any change in ownership of the project area. Notification must include, but not be limited to, a statement that the property owner has provided the purchaser with a copy of the Section 401 Water Quality Certification and that the purchaser understands the permit requirements and must implement them; the seller and purchaser must sign and date the notification. The notification for transfer of mitigation responsibility shall include a signed statement from the new party demonstrating acceptance and understanding of the responsibility to meet the mitigation conditions and applicable requirements of the Certification. Notification must be provided within **10 days** of the sale of the property.
7. In the event of any violation or threatened violation of the conditions of this Certification, the violation or threatened violation must be subject to any remedies, penalties, process or sanctions as provided for under State law. For purposes of section 401(d) of the Clean Water Act, the applicability of any State law authorizing remedies, penalties, process or sanctions for the violation or threatened violation constitutes a limitation necessary to assure compliance with the water quality standards and other pertinent requirements incorporated into this Certification.
8. In response to a suspected violation of any condition of this Certification, the Regional Board may require the holder of any permit or license subject to this Certification to furnish, under penalty of perjury, any technical or monitoring reports the Regional Board deems appropriate, provided that the burden, including costs, of the reports must bear a reasonable relationship to the need for the reports and the benefits to be obtained from the reports.
9. In response to any violation of the conditions of this Certification, the Regional Board may add to or modify the conditions of this Certification as appropriate to ensure compliance.

B. PROJECT CONDITIONS:

1. Prior to the start of the project, and annually thereafter, the County of San Diego must educate all personnel on the requirements in this Certification, pollution prevention measures, spill response, and BMP implementation and maintenance.
2. The County of San Diego must comply with the requirements of State Water Resources Control Board Water Quality Order No. 2003-0017-DWQ, Statewide General Waste Discharge Requirements for discharges of dredged or fill material that have received State Water Quality Certification. These General Waste Discharge Requirements are accessible at:
http://www.waterboards.ca.gov/cwa401/docs/generalorders/gowdr401regulated_projects.pdf.
3. The County of San Diego must comply with the requirements of State Water Resources Control Board Water Quality Order No. 99-08-DWQ, the NPDES General Permit for Storm Water Discharges Associated with Construction Activity.
4. The treatment, storage, and disposal of wastewater during the life of the project must be done in accordance with waste discharge requirements established by the Regional Board pursuant to CWC § 13260.
5. Discharges of concentrated flow during construction or after completion must not cause downstream erosion or damage to properties or stream habitat.
6. Water containing mud, silt, or other pollutants from equipment washing or other activities, must not be discharged to waters of the United States and/or the State or placed in locations that may be subjected to storm flows. Pollutants discharged to areas within a stream diversion area must be removed at the end of each work day or sooner if rain is predicted.
7. All surface waters, including ponded waters, must be diverted away from areas undergoing grading, construction, excavation, vegetation removal, and/or any other activity which may result in a discharge to the receiving water. Diversion activities must not result in the degradation of beneficial uses or exceedance of water quality objectives of the receiving waters. Any temporary dam or other artificial obstruction constructed must only be built from materials such as clean gravel which will cause little or no siltation. Normal flows must be restored to the affected stream immediately upon completion of work at that location.
8. Substances hazardous to aquatic life including, but not limited to, petroleum products, raw cement/concrete, asphalt, and coating materials, must be prevented from contaminating the soil and/or entering waters of the United

States and/or State. BMPs must be implemented to prevent such discharges during each project activity involving hazardous materials.

C. COMPENSATORY MITIGATION FOR LOSS OF WATERS OF THE U.S./STATE:

1. Mitigation for permanent impacts to 0.013 acres (189 linear feet) of non-wetland waters, must be achieved at a 2:1 ratio, by the on-site enhancement of 0.025 acre non-wetland waters, as described in the *Conceptual Mitigation Plan for the Tavern Road Culvert Improvement Project*, dated January 8, 2009, prepared by Recon.
2. The County of San Diego must restore all areas of temporary impacts and all other areas of temporary disturbance which could result in a discharge or a threatened discharge to waters of the United States/State. Restoration must include grading of disturbed areas to pre-project contours and revegetation with native species. The County of San Diego must implement all necessary BMPs to control erosion and runoff from areas associated with this project. Restoration of temporary disturbance areas must be completed no later than 12 months following initial discharge of dredge or fill material into on-site waters.
3. The County of San Diego must notify the Regional Board in writing at least **5 days** prior to the actual commencement of mitigation installation, and within 5 days of completion of mitigation installation.
4. The County of San Diego must salvage leaf litter, coarse woody debris, and upper soil horizons from impacted jurisdictional water sites that are relatively free of invasive exotic species for use in on-site mitigation areas.
5. The County of San Diego must also salvage large cuttings from appropriate tree species if they exist at the impact site and use them as pole plantings at the mitigation site.
6. Within **90 days** of the issuance of this Certification, the County of San Diego must provide the Regional Board a draft preservation mechanism (e.g. deed restriction, conservation easement, etc.) that will protect all mitigation areas and their buffers in perpetuity. Within one year of the issuance of this Certification, the County of San Diego must submit proof of a completed preservation mechanism that will protect all mitigation areas and their buffers in perpetuity. **Construction of the site must not be initiated until a completed preservation mechanism is received.** The conservation easement, deed restriction, or other legal limitation on the mitigation property must be adequate to demonstrate that the site will be maintained without future development or encroachment on the site which could otherwise reduce the functions and values of the site for the variety of beneficial uses of waters of the U.S. that it supports. The legal limitation must prohibit, without

exception, all residential, commercial, industrial, institutional, and transportation development, and any other infrastructure development that would not maintain or enhance the wetland and streambed functions and values of the site. The preservation mechanism must clearly prohibit activities that would result in soil disturbance or vegetation removal, other than the removal of non-native vegetation. Other infrastructure development to be prohibited includes, but is not limited to, additional utility lines, maintenance roads, and areas of maintained landscaping for recreation.

7. The County of San Diego must submit a report (including topography maps and planting locations) to the Regional Board within **90 days** of completion of mitigation site preparation and planting, describing as-built status of the mitigation project.
8. The construction of proposed mitigation must be concurrent with project grading and completed no later than **12 months** following the initial discharge of dredge or fill material into on-site waters. Delays in implementing mitigation must be compensated for by an increased mitigation implementation of **10% of the cumulative compensatory mitigation** for each month of delay.
9. The mitigation site shall be designed and constructed to meet the following conditions:
 - a. *Most of the channel through the mitigation site is characterized by equilibrium conditions, with no evidence of severe aggradation or degradation;*
 - b. As viewed along cross-sections, the channel and buffer have a variety of slopes, or elevations, that are characterized by different moisture gradients. Each sub-slope contains physical patch types or features that contribute to irregularity in height, edges, or surface and to complex topography overall; and
 - c. The mitigation site has a well-developed plant community characterized by a high degree of horizontal and vertical interspersion among plant zones and layers.
10. Throughout the mitigation monitoring program mitigation areas must be maintained free of perennial exotic plant species including, but not limited to, pampas grass, giant reed, tamarisk, sweet fennel, tree tobacco, castor bean, and pepper tree. These exotic plant species must not occupy more than 5 percent of the onsite or offsite mitigation areas.
11. Regional Board acceptance of the final mitigation plan applies only to the site and plan that mitigates for the Tavern Road Drainage Improvement Project and must not be construed as approval of the mitigation site or plan for use by other current or future projects.

12. Any maintenance activities that do not contribute to the success of the mitigation site and enhancement of beneficial uses and ecological functions and services are prohibited. Maintenance activities are limited to the removal of trash and debris, removal of exotic plant species, replacement of dead native plant species and remedial measures deemed necessary for the success of the restoration program.
13. If at any time during the implementation and establishment of the mitigation area(s), and prior to verification of meeting success criteria, a catastrophic natural event (e.g., fire, flood) occurs and impacts the mitigation area, the County of San Diego is responsible for repair and replanting of the damaged area(s).
14. Mitigation monitoring reports must be submitted annually until mitigation has been deemed successful. Annual monitoring reports must be submitted prior to **February 1** of each year. Monitoring reports must include, but not be limited to, the following:
 - a. Names, qualifications, and affiliations of the persons contributing to the report;
 - b. Tables presenting the raw data collected in the field as well as analyses of the physical and biological data, including at a minimum;
 - c. Topographic complexity characteristics at each mitigation site;
 - d. Upstream and downstream habitat and hydrologic connectivity;
 - e. Source of hydrology;
 - f. Width of native vegetation buffer around the entire mitigation site;
 - g. Qualitative and quantitative comparisons of current mitigation conditions with pre-construction conditions and previous mitigation monitoring results;
 - h. Photodocumentation from established reference points;
 - i. A Survey report documenting boundaries of mitigation area; and
 - j. Other items specified in the final the *Conceptual Mitigation Plan for the Tavern Road Culvert Improvement Project*, dated January 8, 2009, prepared by Recon.
15. For the purpose of determining mitigation credit for the removal of exotic/invasive plant species, only the actual area occupied by exotic/invasive plant species must be quantified to comply with mitigation requirements.
16. The County of San Diego must provide the name and contact information of any third party accepting responsibility for implementing the mitigation requirements of this Certification. The notification must be submitted to the Regional Board within 30 days of the transfer of responsibility. The notification must include a signed statement from the new party

demonstrating acceptance and understanding of the responsibility to meet the mitigation conditions and applicable requirements of the Certification.

17. For purposes of this Certification, establishment is defined as the creation of vegetated or unvegetated waters of the U.S./State where the resource has never previously existed (e.g. conversion of nonnative grassland to a freshwater marsh). Restoration is divided into two activities, re-establishment and rehabilitation. Re-establishment is defined as the return of natural/historic functions to a site where vegetated or unvegetated waters of the U.S./State previously existed (e.g., removal of fill material to restore a drainage). Rehabilitation is defined as the improvement of the general suite of functions of degraded vegetated or unvegetated waters of the U.S./State (e.g., removal of a heavy infestation or monoculture of exotic plant species from jurisdictional areas and replacing with native species). Enhancement is defined as the improvement to one or two functions of existing vegetated or unvegetated waters of the U.S./State (e.g., removal of small patches of exotic plant species from an area containing predominantly natural plant species). Preservation is defined as the acquisition and legal protection from future impacts in perpetuity of existing vegetated or unvegetated waters of the U.S./State (e.g., conservation easement).

D. STREAM PHOTO DOCUMENTATION PROCEDURE:

1. The County of San Diego and its successors, must conduct photo documentation of the project site, including all areas of permanent and temporary impact, prior to and after project construction, and mitigation areas, including all areas of permanent and temporary impact, prior to and after project construction. Photo documentation must be conducted in accordance with the State Water Resources Control Board Standard Operating Procedure 4.2.1.4: Stream Photo Documentation Procedure, included as Attachment 6. In addition, photo documentation must include Geographic Positioning System (GPS) coordinates for each of the photo points referenced. The County of San Diego must submit this information in a photo documentation report to the Regional Board with the Mitigation Maintenance and Monitoring reports. The report must include a compact disc that contains digital files of all the photos (jpeg file type or similar).

E. GEOGRAPHIC INFORMATION SYSTEM REPORTING:

1. The County of San Diego must submit Geographic Information System (GIS) shape files of the impact and mitigation areas within **30 days** of project impacts and the mitigation area within **30 days** of mitigation installation. All impact and mitigation areas shapefiles must be polygons. Two GPS readings (points) must be taken on each line of the polygon and the polygon must have a minimum of 10 points. GIS metadata must also be submitted.

F. REPORTING:

1. All information requested in this Certification is pursuant to California Water Code (CWC) section 13267. Civil liability may be administratively imposed by the Regional Board for failure to furnish requested information pursuant to CWC section 13268.
2. All reports and information submitted to the Regional Board must be submitted in both hardcopy and electronic format. The preferred electronic format for each report submission is one file in PDF format that is also Optical Character Recognition (OCR) capable.
3. The County of San Diego must submit a report to the Regional Board within 30 days of completion of the project. The report should include as-built drawings no bigger than 11" x 17" and photos of the completed project including post-construction BMPs.
4. All applications, reports, or information submitted to the Regional Board must be signed and certified as follows:
 - a. For a corporation, by a responsible corporate officer of at least the level of vice president.
 - b. For a partnership or sole proprietorship, by a general partner or proprietor, respectively.
 - c. For a municipality, or a state, federal, or other public agency, by either a principal executive officer or ranking elected official.
5. A duly authorized representative of a person designated in Items 4.a. through 4.c. above may sign documents if:
 - a. The authorization is made in writing by a person described in Items 4.a. through 4.c. above.
 - b. The authorization specifies either an individual or position having responsibility for the overall operation of the regulated activity.
 - c. The written authorization is submitted to the Regional Board Executive Officer.
6. All applications, reports, or information submitted to the Regional Board must be signed and certified as follows:

"I certify under penalty of law that I have personally examined and am familiar with the information submitted in this document and all attachments and that, based on my inquiry of those individuals immediately responsible for obtaining the information, I believe that the information is true, accurate, and

complete. I am aware that there are significant penalties for submitting false information, including the possibility of fine and imprisonment."

7. The County of San Diego must submit reports required under this Certification, or other information required by the Regional Board, to:

Executive Officer
California Regional Water Quality Control Board
San Diego Region
Attn: 401 Certification; Project No. 08C-065
9174 Sky Park Court, Suite 100
San Diego, California 92123

6. Required Reports: The following list summarizes the reports, excluding spill notifications and emergency situations, required per the conditions of this Certification to be submitted to the Regional Board.

Report Topic	Certification Condition	Due Date(s)
Change of Ownership & Responsibility Notification	A.6	Within 10 days of the sale of property
Restoration of Temporary Disturbances	C.2	No later than 12 months following initial discharge
Notification	C.3	At least 5 days prior to commencement and within 5 days of construction termination
Draft Preservation Mechanism	C. 6	Within 90 days of certification issuance
Final Preservation Mechanism	C.6	Within 1 year of certification issuance and prior to construction
Mitigation Site Report	C.7	Within 90 days of completion of mitigation site preparation & planting
Mitigation Construction	C.8	Completed no later than 12 months following the initial discharge

Mitigation Monitoring Report	C.14	Prior to February 1 of each year until mitigation is deemed complete
Transfer of Mitigation Responsibility	C.16	Within 30 days of the transfer of responsibility
Stream Photo Documentation	D.1	With Mitigation Maintenance & Monitoring Reports
GIS	E.1	Within 30 days of project impacts & within 30 days of mitigation installation
Project Completion Report	F.3	Within 30 days of project completion

PUBLIC NOTIFICATION OF PROJECT APPLICATION:

On September 9, 2008, receipt of the project application was posted on the Regional Board web site to serve as appropriate notification to the public.

REGIONAL WATER QUALITY CONTROL BOARD CONTACT PERSON:


Jody Ebsen
 California Regional Water Quality Control Board, San Diego Region
 9174 Sky Park Court, Suite 100
 San Diego, CA 92123
 (858) 636-3146
 jebsen@waterboards.ca.gov

WATER QUALITY CERTIFICATION:

I hereby certify that the proposed discharge from the Tavern Road Drainage Improvement Project (Project No.08C-065) will comply with the applicable provisions of sections 301 ("Effluent Limitations"), 302 ("Water Quality Related Effluent Limitations"), 303 ("Water Quality Standards and Implementation Plans"), 306 ("National Standards of Performance"), and 307 ("Toxic and Pretreatment Effluent Standards") of the Clean Water Act. This discharge is also regulated under State Water Board Order No. 2003-0017-DWQ, "Statewide General Waste Discharge Requirements for Dredged or Fill Discharges that have Received State Water Quality Certification (General WDRs)," which requires compliance with all conditions of this Water Quality Certification. Please note

that enrollment under Order No. 2003-017 DWQ is conditional and, should new information come to our attention that indicates a water quality problem, the Regional Board may issue waste discharge requirements at that time.

Except insofar as may be modified by any preceding conditions, all Certification actions are contingent on (a) the discharge being limited and all proposed mitigation being completed in strict compliance with the applicants' project description and/or on the attached Project Information Sheet, and (b) on compliance with all applicable requirements of the Regional Board's Water Quality Control Plan (Basin Plan).



JOHN H. ROBERTUS
Executive Officer
Regional Water Quality Control Board

3/3/2009
Date

Attachments:

1. Project Information
2. Distribution List
3. Location Map
4. Site Map
5. Mitigation Map
6. Stream Photodocumentation Procedure

**ATTACHMENT 1
PROJECT INFORMATION**

Applicant: ✓ County of San Diego
 Attention: Lorrie Bradley
 5469 Kearny Villa Road, Suite 305
 San Diego, CA 92123
 Telephone: 858-874-4055
 Facsimile: 858-874-4043
 Email: lorrie.bradley@sdcounty.ca.gov

Project Name: ✓ Tavern Road Drainage Improvement Project, 08C-065

Project Location: ✓ Intersection of Tavern Road and Arnold Way in Alpine

Type of Project: ✓ Drainage improvement project

Need for Project: ✓ Increase the flood capacity to hold a 100 year flood

Project Description: ✓ The project is to replace and improve a drainage facility to increase the capacity for a 100 year flood, which includes installing a 6x3 foot double box culvert that is approximately 127 feet in length at the intersection of Tavern Road and Arnold Way in Alpine.

Federal Agency/Permit: ✓ U.S. Army Corps of Engineers §404, NWP 43, Terry Dean

Other Required Regulatory Approvals: ✓ California Department of Fish and Game Streambed Alteration Agreement, Kelly Fisher

California Environmental Quality Act (CEQA) Compliance: ✓ Tavern Road Drainage Improvement Project: Adopt Mitigated Negative Declaration and Authorize Negotiation for Right of Way (District 2), SCH# 2008041080, September 24, 2008, County of San Diego

Receiving Water: ✓ San Diego Hydrologic Unit, El Capitan Hydrologic Area, Alpine Hydrologic Sub-Area (907.33) Alpine Creek

Affected Waters of the United States: ✓ Permanent: 0.013 acres (189 linear feet) non-wetland waters

Compensatory Mitigation: ✓ On-site enhancement of 0.025 acres of non-wetland waters at a 2:1 ratio. *Conceptual Mitigation Plan for the Tavern Road Culvert Improvement Project*, dated January 8, 2009, prepared by Recon

Public Notice: ✓ On September 9, 2008, receipt of the project application was posted on the Regional Board web site to serve as appropriate notification to the public.

Fees: Total Due: \$500.00
✓ Total Paid: \$500.00 (check No. 4863432)

CIWQS: Regulatory Measure ID: 351905
Place ID: 725939
Party ID: 246999

**ATTACHMENT 2
DISTRIBUTION LIST**

Mr. Terry Dean
U.S. Army Corps of Engineers, Regulatory Branch
San Diego Field Office
6010 Hidden Valley Rd, Ste 105
Carlsbad, California 92011

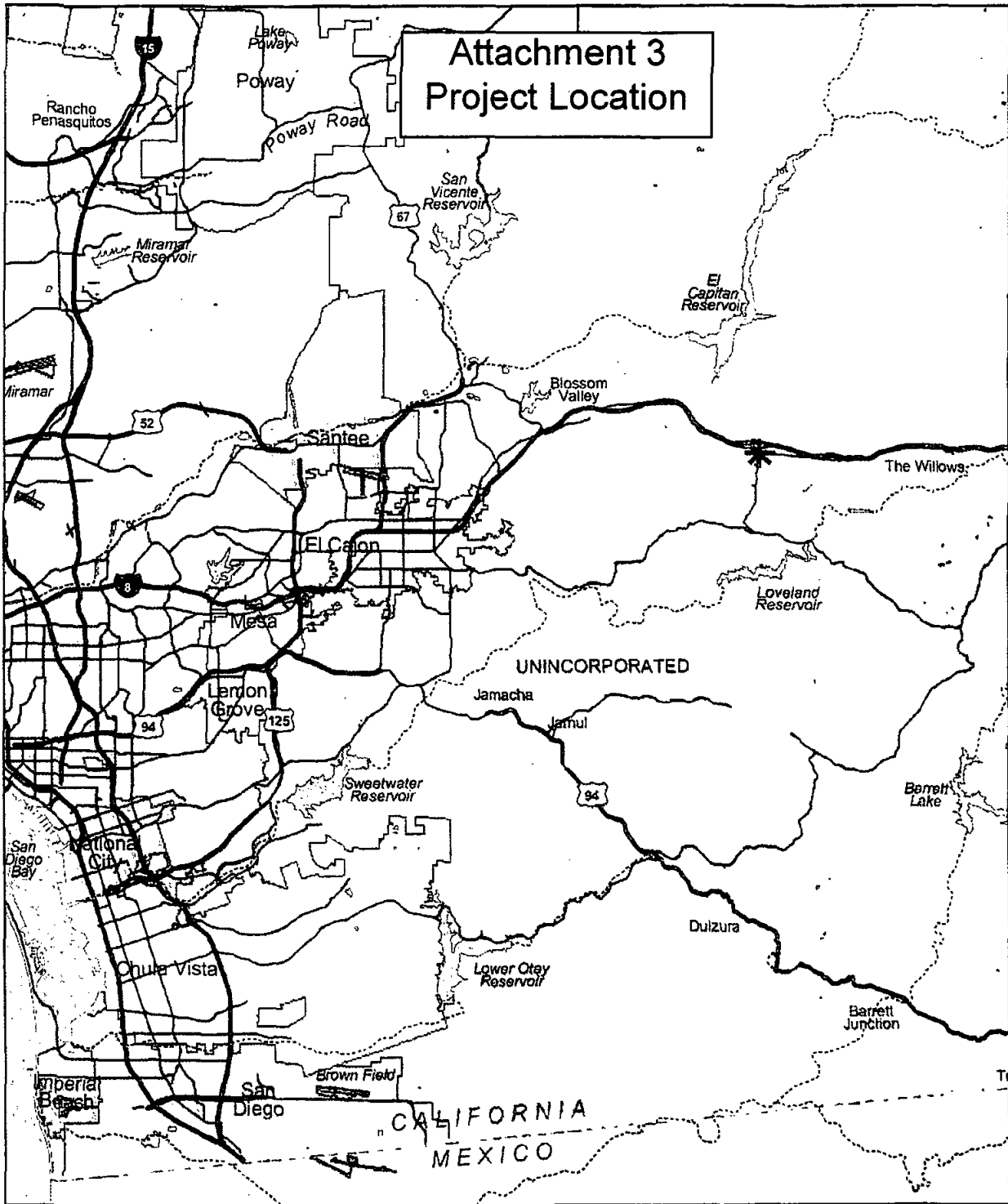
Ms. Kelly Fisher
California Department of Fish and Game
South Coast Region
Habitat Conservation Planning – South
4949 Viewridge Avenue
San Diego, CA 92123

Via email:

State Water Resources Control Board, Division of Water Quality
401 Water Quality Certification and Wetlands Unit
Stateboard401@waterboards.ca.gov

U.S. Environmental Protection Agency, Region 9
Wetlands Regulatory Office
R9-WTR8-Mailbox@epa.gov

Ms. Sally Brown
U.S. Department of the Interior
Fish and Wildlife Service
Sally_Brown@fws.gov



* Project Location

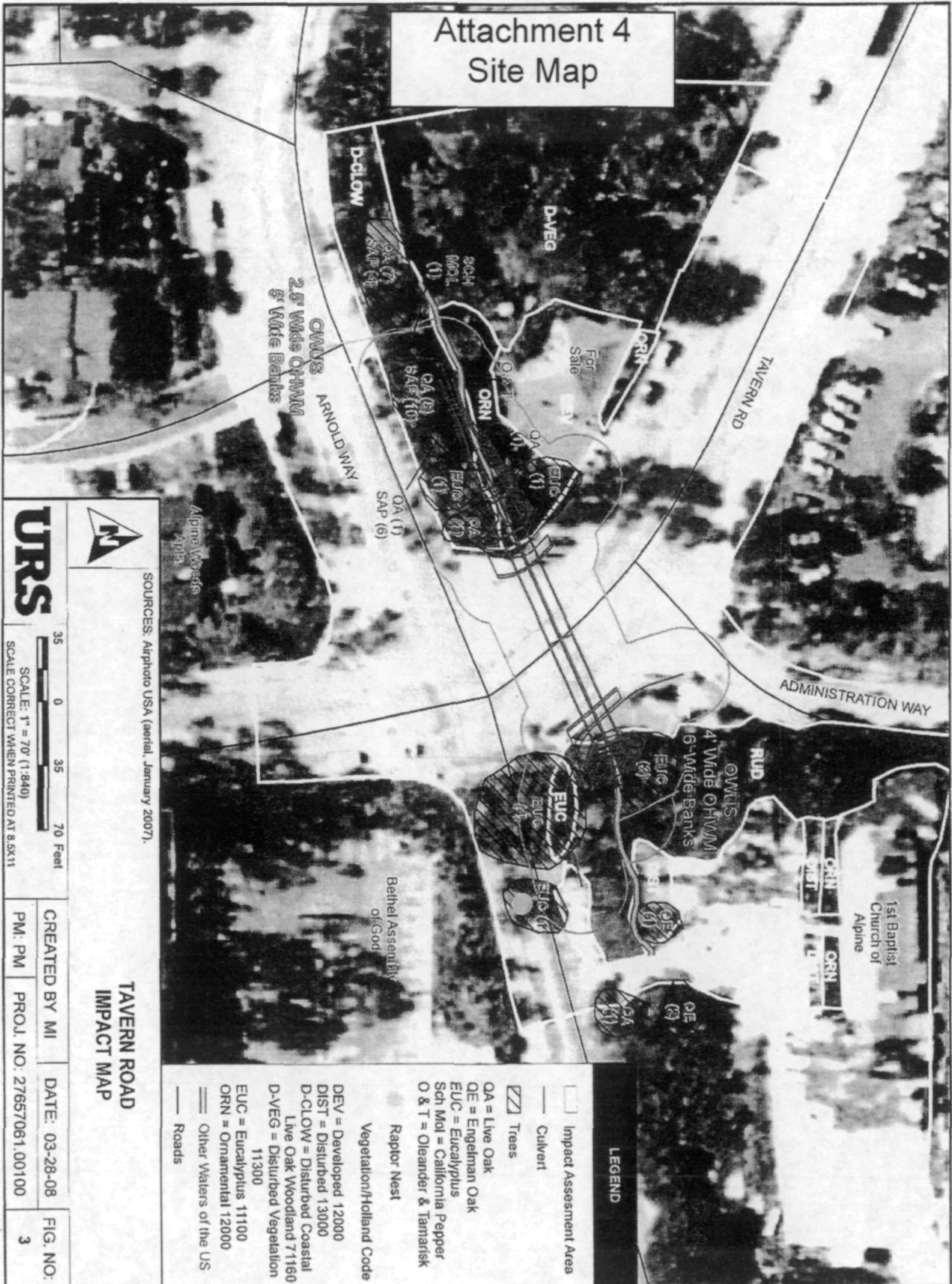


RECON

M:\jobs3\4880\common_gis\fig1.mxd 05/28/08

FIGURE 1
Regional Location

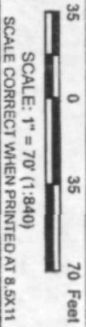
Attachment 4 Site Map



URS



SOURCES: Airphoto USA (aerial, January 2007).



CREATED BY MI
PM: PM

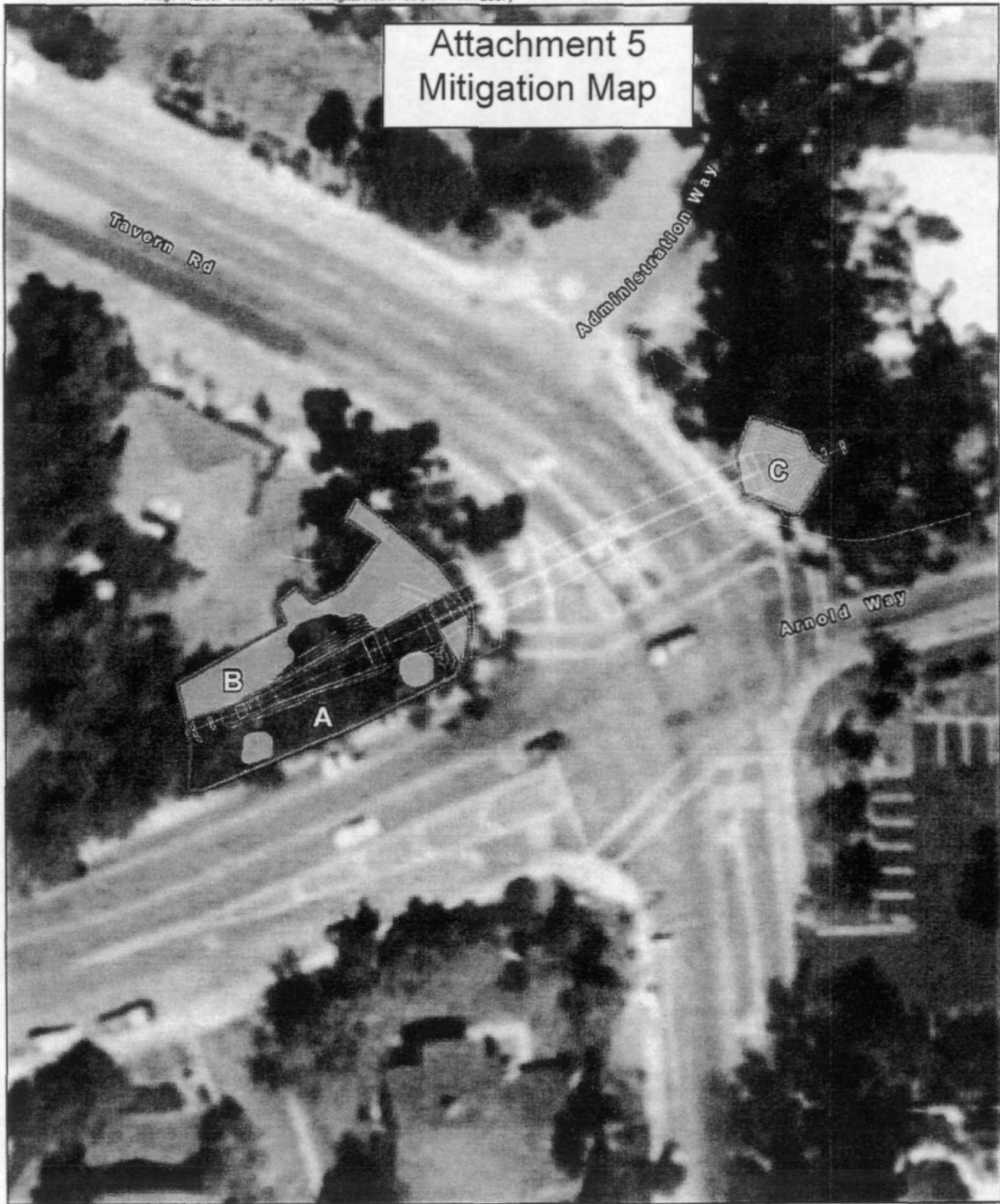
DATE: 03-28-08
PROJ. NO.: 27657061.00100

FIG. NO.:
3

TAVERN ROAD IMPACT MAP

LEGEND

- Impact Assessment Area
- Culvert
- Trees
- QA = Live Oak
- OE = Engelmann Oak
- EUC = Eucalyptus
- Sch Mol = California Pepper
- O & T = Oleander & Tamarsik
- Raptor Nest
- Vegetation/Holland Code
- DEV = Developed 12000
- DIST = Disturbed 13000
- D-CLOW = Disturbed Coastal Live Oak Woodland 71160
- D-VEG = Disturbed Vegetation 11300
- EUC = Eucalyptus 11100
- ORN = Ornamental 12000
- Other Waters of the US
- Roads



Attachment 5 Mitigation Map

Tavern Rd

Administration Way

Arnold Way

- Exotic Tree Removal and Revegetation Areas
- Habitat Enhancement Locations
- A Enhancement Area

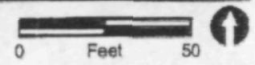


FIGURE 3

Approximate Enhancement and Revegetation Areas
for the Tavern Road Culvert Improvement Project

RECON

M:\jobs\314680\common_gis\fig3.mxd 01/08/09

ATTACHMENT 6 STREAM PHOTO DOCUMENTATION PROCEDURES

Standard Operating Procedure (SOP) 4.2.1.4

Stream Photo Documentation Procedure

(CARCD 2001, Written by TAC Visual Assessments work group)

Introduction:

Photographs provide a qualitative, and potentially semi-quantitative, record of conditions in a watershed or on a water body. Photographs can be used to document general conditions on a reach of a stream during a stream walk, pollution events or other impacts, assess resource conditions over time, or can be used to document temporal progress for restoration efforts or other projects designed to benefit water quality. Photographic technology is available to anyone and it does not require a large degree of training or expensive equipment. Photos can be used in reports, presentations, or uploaded onto a computer website or GIS program. This approach is useful in providing a visual portrait of water resources to those who may never have the opportunity to actually visit a monitoring site.

Equipment:

Use the same camera to the extent possible for each photo throughout the duration of the project. Either 35 mm color or digital color cameras are recommended, accompanied by a telephoto lens. If you must change cameras during the program, replace the original camera with a similar one comparable in terms of media (digital vs. 35 mm) and other characteristics. A complete equipment list is suggested as follows:

Required:

- Camera and backup camera
- Folder with copies of previous photos (do not carry original photos in the field)
- Topographic and/or road map
- Aerial photos if available
- Compass
- Timepiece
- Extra film or digital disk capacity (whichever is applicable)
- Extra batteries for camera (if applicable)
- Photo-log data sheets or, alternatively, a bound notebook dedicated to the project
- Yellow photo sign form and black marker, or, alternatively, a small black board and chalk

Optional:

- GPS unit
- Stadia rod (for scale on landscape shots)
- Ruler (for scale on close up views of streams and vegetation)
- Steel fence posts for dedicating fixed photo points in the absence of available fixed landmarks

How to Access Aerial Photographs:

Aerial Photos can be obtained from the following federal agencies:

USGS Earth Science Information Center
 507 National Center
 12201 Sunrise Valley Drive
 Reston, VA 22092
 800-USA-MAPS

USDA Consolidated Farm Service Agencies
 Aerial Photography Field Office
 222 West 2300 South
 P.O. Box 30010
 Salt Lake City, UT 84103-0010
 801-524-5856

Cartographic and Architectural Branch
 National Archives and Records Administration
 8601 Adelphi Road
 College park, MD 20740-6001
 301-713-7040

Roles and Duties of Team:

The team should be comprised of a minimum of two people, and preferably three people for restoration or other water quality improvement projects, as follows:

1. Primary Photographer
2. Subject, target for centering the photo and providing scale
3. Person responsible for determining geographic position and holding the photo sign forms or blackboard.

One of these people is also responsible for taking field notes to describe and record photos and photo points.

Safety Concerns:

Persons involved in photo monitoring should **ALWAYS** put safety first. For safety reasons, always have at least two 2 volunteers for the survey. Make sure that the

area(s) you are surveying either are accessible to the public or that you have obtained permission from the landowner prior to the survey.

Some safety concerns that may be encountered during the survey include, but are not limited to:

- Inclement weather
- Flood conditions, fast flowing water, or very cold water
- Poisonous plants (e.g.: poison oak)
- Dangerous insects and animals (e.g.: bees, rattlesnakes, range animals such as cattle, etc.)
- Harmful or hazardous trash (e.g.: broken glass, hypodermic needles, human feces)

We recommend that the volunteer coordinator or leader discuss the potential hazards with all volunteers prior to any fieldwork.

General Instructions:

From the inception of any photo documentation project until it is completed, always take each photo from the same position (photo point), and at the same bearing and vertical angle at that photo point. Photo point positions should be thoroughly documented, including photographs taken of the photo point. Refer to copies of previous photos when arriving at the photo point. Try to maintain a level (horizontal) camera view unless the terrain is sloped. (If the photo can not be horizontal due to the slope, then record the angle for that photo.) When photo points are first being selected, consider the type of project (meadow or stream restoration, vegetation management for fire control, ambient or event monitoring as part of a stream walk, etc.) and refer to the guidance listed on *Suggestions for Photo Points by Type of Project*.

When taking photographs, try to include landscape features that are unlikely to change over several years (buildings, other structures, and landscape features such as peaks, rock outcrops, large trees, etc.) so that repeat photos will be easy to position. Lighting is, of course, a key ingredient so give consideration to the angle of light, cloud cover, background, shadows, and contrasts. Close view photographs taken from the north (i.e., facing south) will minimize shadows. Medium and long view photos are best shot with the sun at the photographer's back. Some artistic expression is encouraged as some photos may be used on websites and in slide shows (early morning and late evening shots may be useful for this purpose). Seasonal changes can be used to advantage as foliage, stream flow, cloud cover, and site access fluctuate. It is often important to include a ruler, stadia rod, person, farm animal, or automobile in photos to convey the scale of the image. Of particular concern is the angle from which the photo is taken. Oftentimes an overhead or elevated shot from a bridge, cliff, peak, tree, etc. will be instrumental in conveying the full dimensions of the

project. Of most importance overall, however, is being aware of the goal(s) of the project and capturing images that clearly demonstrate progress towards achieving those goal(s). Again, reference to *Suggestions for Photo Points by Type of Project* may be helpful.

If possible, try to include a black board or yellow photo sign in the view, marked at a minimum with the location, subject, time and date of the photograph. A blank photo sign form is included in this document.

Recording Information:

Use a systematic method of recording information about each project, photo point, and photo. The following information should be entered on the photo-log forms (blank form included in this document) or in a dedicated notebook:

- Project or group name, and contract number (if applicable, e.g., for funded restoration projects)
- General location (stream, beach, city, etc.), and short narrative description of project's habitat type, goals, etc.
- Photographer and other team members
- Photo number
- Date
- Time (for each photograph)
- Photo point information, including:
 - Name or other unique identifier (abbreviated name and/or ID number)
 - Narrative description of location including proximity to and direction from notable landscape features like roads, fence lines, creeks, rock outcrops, large trees, buildings, previous photo points, etc. – sufficient for future photographers who have never visited the project to locate the photo point
 - Latitude, longitude, and altitude from map or GPS unit
- Magnetic compass bearing from the photo point to the subject
- Specific information about the subject of the photo
- Optional additional information: a true compass bearing (corrected for declination) from photo point to subject, time of sunrise and sunset (check newspaper or almanac), and cloud cover.

For ambient monitoring, the stream and shore walk form should be attached or referenced in the photo-log.

When monitoring the implementation of restoration, fuel reduction, or Best Management Practices (BMP) projects, include or attach to the photo-log a narrative description of observable progress in achieving the goals of the project. Provide supplementary information along with the photo, such as noticeable changes in habitat, wildlife, and water quality and quantity.

Archive all photos, along with the associated photo-log information, in a protected environment.

The Photo Point: Establishing Position of Photographer:

1. Have available a variety of methods for establishing position: maps, aerial photos, GPS, permanent markers and landmarks, etc. If the primary method fails (e.g., a GPS or lost marker post) then have an alternate method (map, aerial photo, copy of an original photograph of the photo-point, etc).
2. Select an existing structure or landmark (mailbox, telephone pole, benchmark, large rock, etc.), identify its latitude and longitude, and choose (and record for future use) the permanent position of the photographer relative to that landmark. Alternatively, choose the procedure described in *Monitoring California's Annual Rangeland Vegetation* (UC/DANR Leaflet 21486, Dec. 1990). This procedure involves placing a permanently marked steel fence post to establish the position of the photographer.
3. For restoration, fuel reduction, and BMP projects, photograph the photo-points and carry copies of those photographs on subsequent field visits.

Determining the Compass Bearing:

1. Select and record the permanent magnetic bearing of the photo center view. You can also record the true compass bearing (corrected for declination) but do not substitute this for the magnetic bearing. Include a prominent landmark in a set position within the view. If possible, have an assistant stand at a fixed distance from both the photographer and the center of the view, holding a stadia rod if available, within the view of the camera; preferably position the stadia rod on one established, consistent side of the view for each photo (right or left side).
2. Alternatively, use the procedure described in *Monitoring California's Annual Rangeland Vegetation* (UC/DANR Leaflet 21486, Dec. 1990). This procedure involves placing a permanently marked steel fence post to establish the position of the focal point (photo center).
3. When performing ambient or event photo monitoring, and when a compass is not available, then refer to a map and record the approximate bearing as north, south, east or west.

Suggestions for Photo Points by Type of Project:

Ambient or Event Monitoring, Including Photography Associated with Narrative Visual Assessments:

1. When first beginning an ambient monitoring program take representative long and/or medium view photos of stream reaches and segments of shoreline being monitored. Show the positions of these photos on a map, preferably on the stream/shore walk form. Subjects to be photographed include a representative view of the stream or shore condition at the beginning and ending positions of the segment being monitored, storm drain outfalls, confluence of tributaries, structures (e.g., bridges, dams, pipelines, etc.).
2. If possible, take a close view photograph of the substrate (streambed), algae, or submerged aquatic vegetation.
3. Time series: Photographs of these subjects at the same photo points should be repeated annually during the same season or month if possible.
4. Event monitoring refers to any unusual or sporadic conditions encountered during a stream or shore walk, such as trash dumps, turbidity events, oil spills, etc. Photograph and record information on your photo-log and on your Stream and Shore Walk Visual Assessment form. Report pollution events to the Regional Board. Report trash dumps to local authorities.

All Restoration and Fuel Reduction Projects – Time Series:

Take photos immediately before and after construction, planting, or vegetation removal. Long term monitoring should allow for at least annual photography for a minimum of three years after the project, and thereafter at 5 years and ten years.

Meadow Restoration:

1. Aerial view (satellite or airplane photography) if available.
2. In the absence of an aerial view, a landscape, long view showing an overlapping sequence of photos illustrating a long reach of stream and meadow (satellite photos, or hill close by, fly-over, etc.)
3. Long view up or down the longitudinal dimension of the creek showing riparian vegetation growth bounded on each side by grasses, sedges, or whatever that is lower in height
4. Long view of conversion of sage and other upland species back to meadow vegetation

5. Long view and medium view of streambed changes (straightened back to meandering, sediment back to gravel, etc.)
6. Medium and close views of structures, plantings, etc. intended to induce these changes

Stream Restoration/stabilization:

1. Aerial view (satellite or airplane photography) if available.
2. In the absence of an aerial view, a landscape, long-view showing all or representative sections of the project (bluff, bridge, etc.)
3. Long view up or down the stream (from stream level) showing changes in the stream bank, vegetation, etc.
4. Long view and medium view of streambed changes (thalweg, gravel, meanders, etc.)
5. Medium and close views of structures, plantings, etc. intended to induce these changes.
6. Optional: Use a tape set perpendicular across the stream channel at fixed points and include this tape in your photos described in 3 and 4 above. For specific procedures refer to Harrelson, Cheryl C., C.L. Rawlins, and John P. Potyondy, *Stream Channel Reference Sites: An Illustrated Guide to Field Techniques*, United States Department of Agriculture, Forest Service, Rocky Mountain Forest and Range Experiment Station, General Technical Report RM-245.

Vegetation Management for Fire Prevention ("fuel reduction"):

1. Aerial view (satellite or airplane photography) if available.
2. In the absence of an aerial view, a landscape, long view showing all or representative sections of the project (bluff, bridge, etc.)
3. Long view (wide angle if possible) showing the project area or areas. Preferably these long views should be from an elevated vantage point.
4. Medium view photos showing examples of vegetation changes, and plantings if included in the project. It is recommended that a person (preferably holding a stadia rod) be included in the view for scale

5. To the extent possible include medium and long view photos that include adjacent stream channels.

Stream Sediment Load or Erosion Monitoring:

1. Long views from bridge or other elevated position.
2. Medium views of bars and banks, with a person (preferably holding a stadia rod) in view for scale.
3. Close views of streambed with ruler or other common object in the view for scale.
4. Time series: Photograph during the dry season (low flow) once per year or after a significant flood event when streambed is visible. The flood events may be episodic in the south and seasonal in the north.
5. Optional: Use a tape set perpendicular across the stream channel at fixed points and include this tape in your photos described in 1 and 2 above. For specific procedures refer to Harrelson, Cheryl C., C.L. Rawlins, and John P. Potyondy, *Stream Channel Reference Sites: An Illustrated Guide to Field Techniques*, United States Department of Agriculture, Forest Service, Rocky Mountain Forest and Range Experiment Station, General Technical Report RM-245.

PHOTO- LOG FORM

Project:

Location:

Date:

Photographer:

Team members:

Photo #	Time	Photo Point ID	Photo Pt. Description & Location	Bearing to Subject	Subject Description

General Notes or Comments (weather, cloud cover, time of sunrise and sunset, other pertinent information):

PHOTO SIGN FORM: Print this form on yellow paper. Complete the following information for each photograph. Include in the photographic view so that it will be legible in the finished photo.

Location:

Subject Description:

Date:

Time:

SENDER: COMPLETE THIS SECTION	COMPLETE THIS SECTION ON DELIVERY
<ul style="list-style-type: none"> Complete items 1, 2, and 3. Also complete item 4 if Restricted Delivery is desired. Print your name and address on the reverse so that we can return the card to you. Attach this card to the back of the mailpiece, or on the front if space permits. 	<p>A. Signature X <input type="checkbox"/> Agent <input type="checkbox"/> Addressee</p> <p>B. Received by (Printed Name) C. Date of Delivery</p>
<p>1. Article Addressed to:</p> <p style="text-align: center;">County of SAN DIEGO Attn: Lorrie Bradley 5469 Kearny Villa Road Ste. 305 SAN DIEGO CA 92123</p>	<p>D. Is delivery address different from item 1? <input type="checkbox"/> Yes If YES, enter delivery address below: <input type="checkbox"/> No</p> <p>3. Service Type <input checked="" type="checkbox"/> Certified Mail <input type="checkbox"/> Express Mail <input type="checkbox"/> Registered <input type="checkbox"/> Return Receipt for Merchandise <input type="checkbox"/> Insured Mail <input type="checkbox"/> C.O.D.</p> <p>4. Restricted Delivery? (Extra Fee) <input type="checkbox"/> Yes</p>
<p>2. Article Number (Transfer from service label)</p>	<p style="text-align: center;">7008 1140 0002 8456 9854</p>

PS Form 3811, February 2004 Domestic Return Receipt 102595-02-M-1540

PLACE STICKER AT TOP OF ENVELOPE TO THE RIGHT
 OF THE RETURN ADDRESS, FOLD AT DOTTED LINE
CERTIFIED MAIL™



7008 1140 0002 8456 9854
 7008 1140 0002 8456 9854

U.S. Postal Service™ CERTIFIED MAIL™ RECEIPT (Domestic Mail Only; No Insurance Coverage Provided)	
For delivery information visit our website at www.usps.com	
OFFICIAL USE	
Postage \$	Postmark Here
Certified Fee	
Return Receipt Fee (Endorsement Required)	
Restricted Delivery Fee (Endorsement Required)	
Total Postage & Fees \$ 6.58	
Sent To County of SAN DIEGO Attn: Lorrie Bradley Street, Apt. No.; or PO Box No. 5469 Kearny Villa Road Ste. 305 City, State, ZIP+4 SAN DIEGO CA 92123	
PS Form 3800, August 2006 See Reverse for Instructions	

3 / 5 / 2009