

Grantville Trolley Station/Alvarado Creek Enhancement Study

Regional Water Quality Control Board

June 20th 2018

Information Item #9- Wetland Restoration/Flood Control Project



**David Smith – Principle/Project Consultant
Navajo Community Planners-Chair**







Acknowledgements

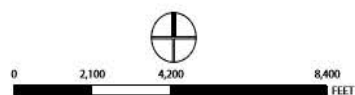
- Councilmember Scott Sherman (District 7)
- Lisa Lind- City of San Diego Planning Department
- Ruth Kolb- Transportation and Storm water Department (Reach 1 & 3)
- Tim Allison- Manager Real Estate Assets, MTS
- Brian Parker- Biologist, RECON
- Anthony Cotts & Jayne Janda-Timba - Rick Engineering
- Seth Litchney- SANDAG
- Daniel R. Smith- El Dorado Properties, Inc.
- Matt Adams- Navajo Community Planners, BIA

FIGURE 1-1 REGIONAL LOCATION



Sources: Esri, USGS, NOAA

-  Grantville Trolley Station
-  Study Area
-  Green Line
-  Navajo Community Plan Area
-  Alvarado Creek Watershed
-  Freeways
-  San Diego City Limits
-  Major Roads
-  Parks & Open Space
-  Lake/Pond/Water



This map/data is provided without warranty of any kind, either express or implied, including but not limited to, the implied warranties of merchantability and fitness for a particular purpose.

Note: This product may contain information from the SANDAG Regional Information System which cannot be reproduced without the written permission of SANDAG.

Copyright SanGIS 2009 - All Rights Reserved. Full text of this license notice can be found at: http://www.sangis.org/legal_Notice.htm



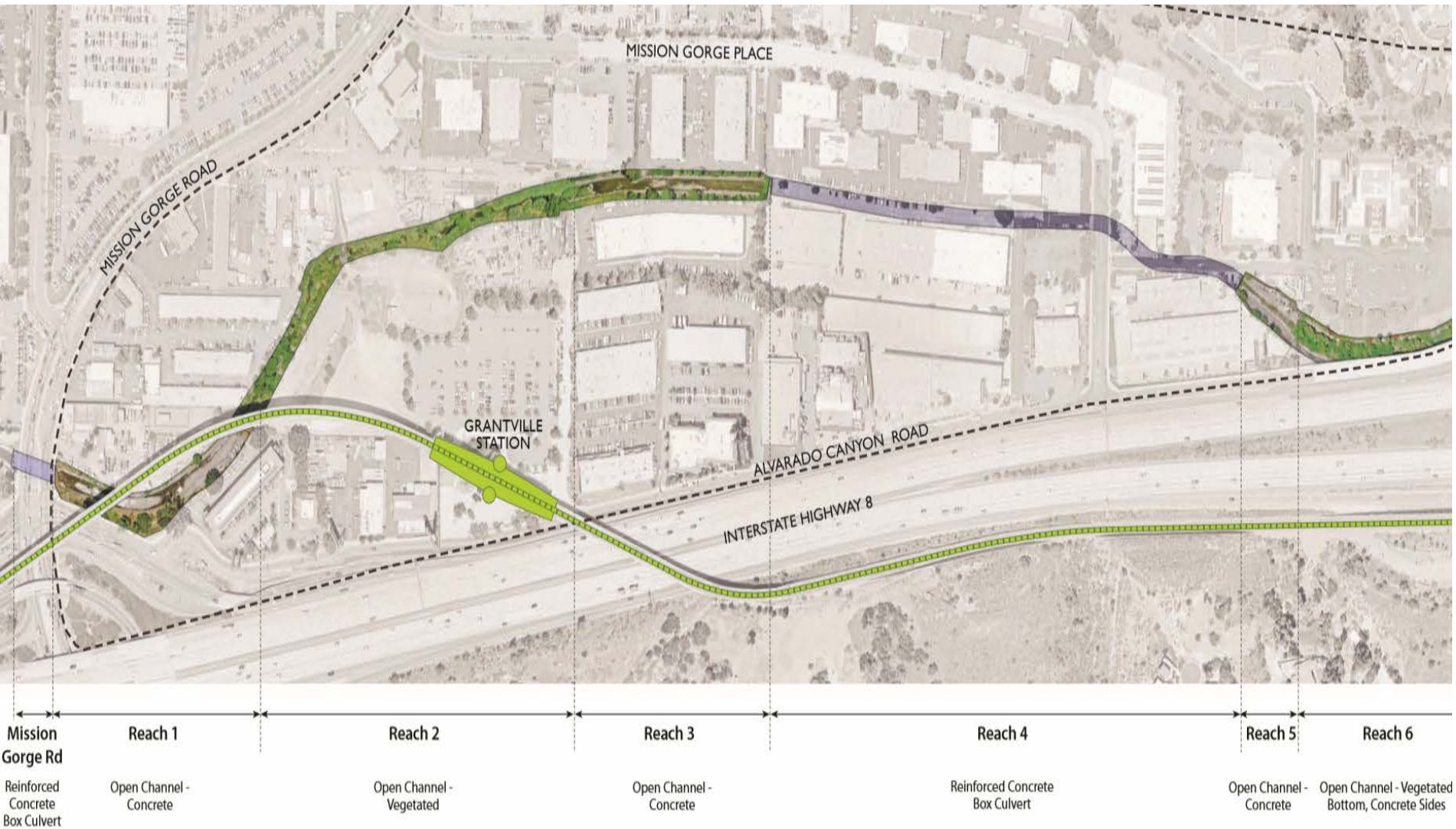




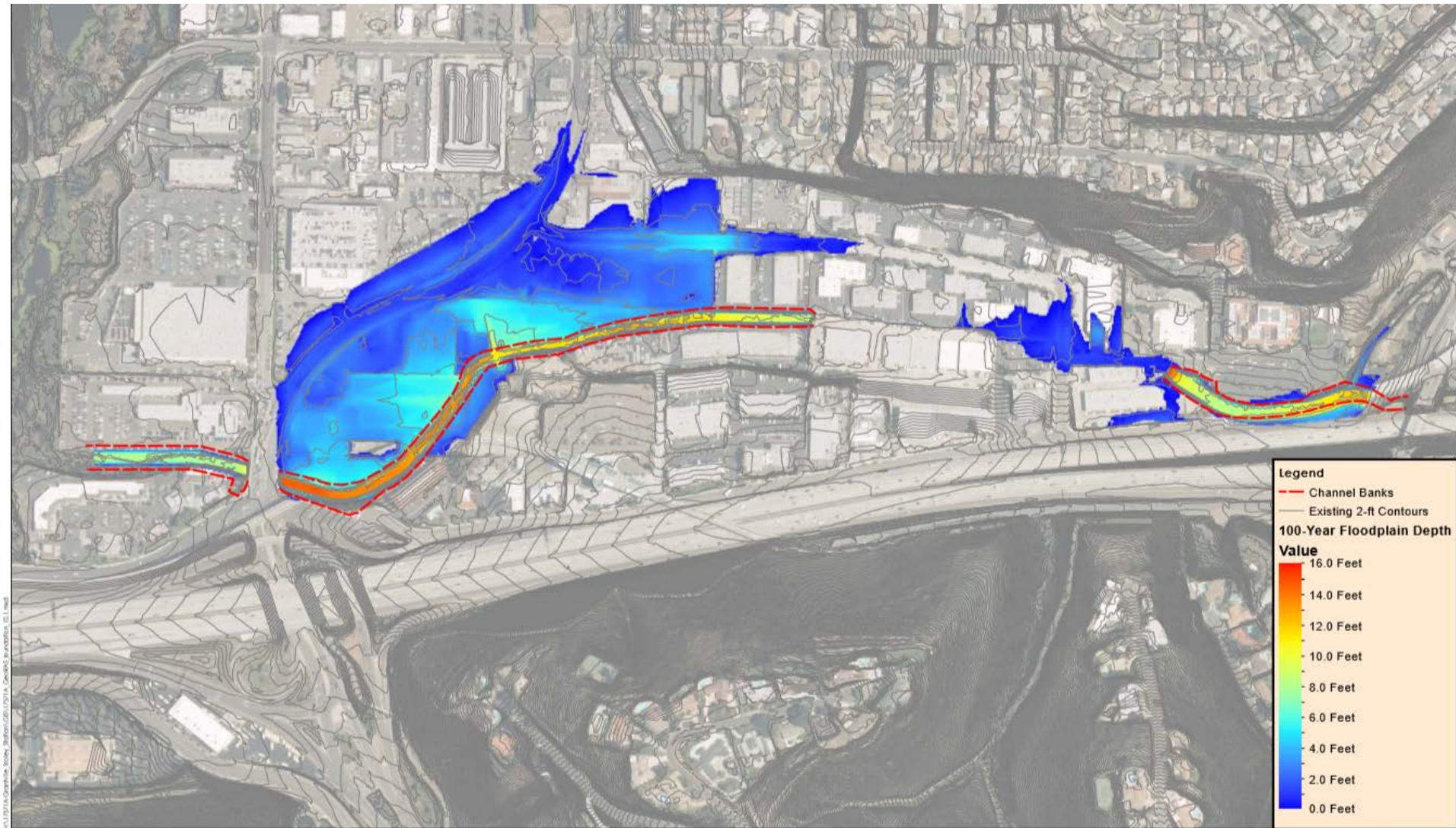




Existing Channel Types



Existing FEMA 100-Year Floodplain



January 20th 2017







Existing Box Culvert- Reach 1





Water Quality

Post-Rain Water Quality

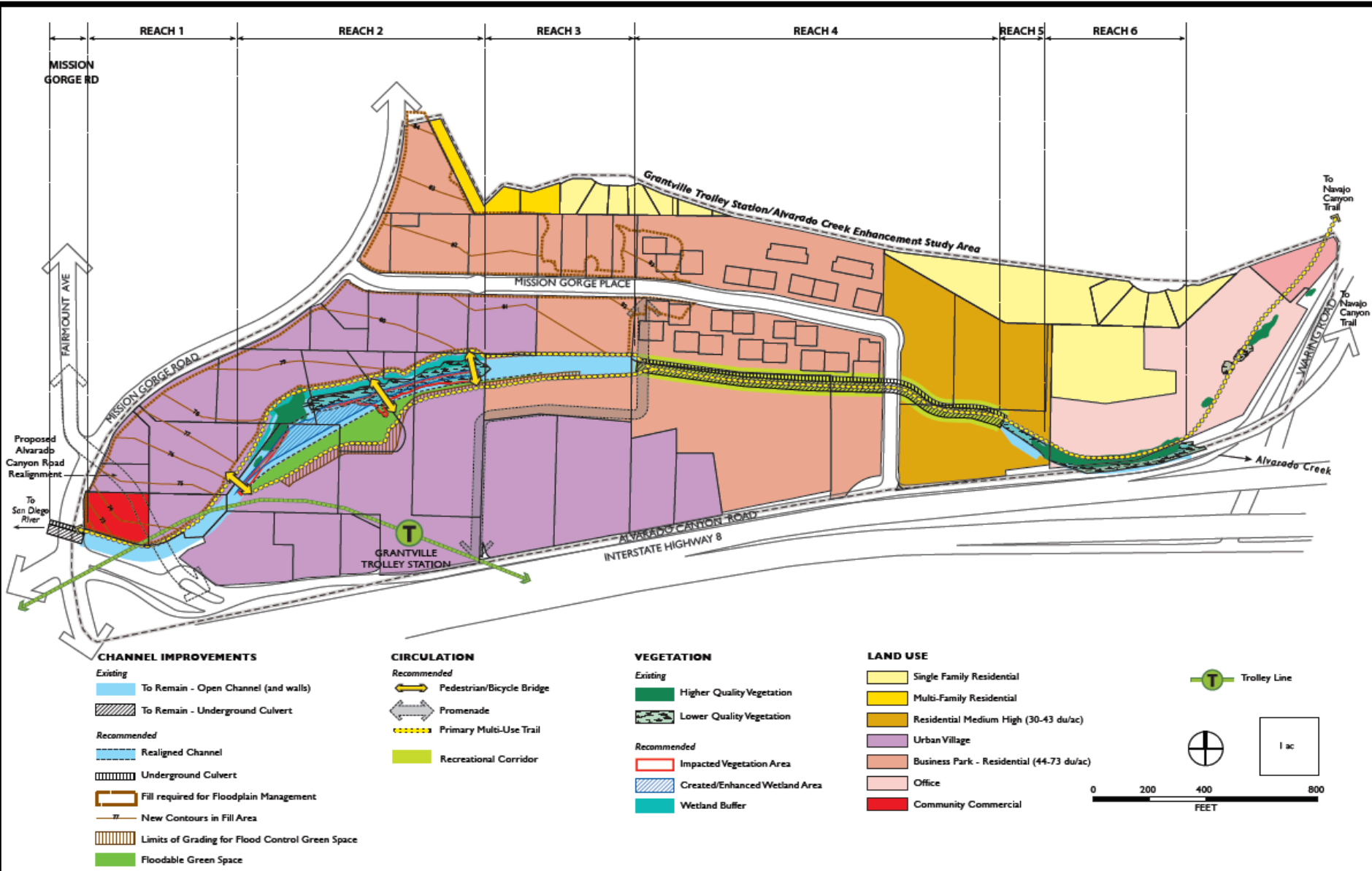




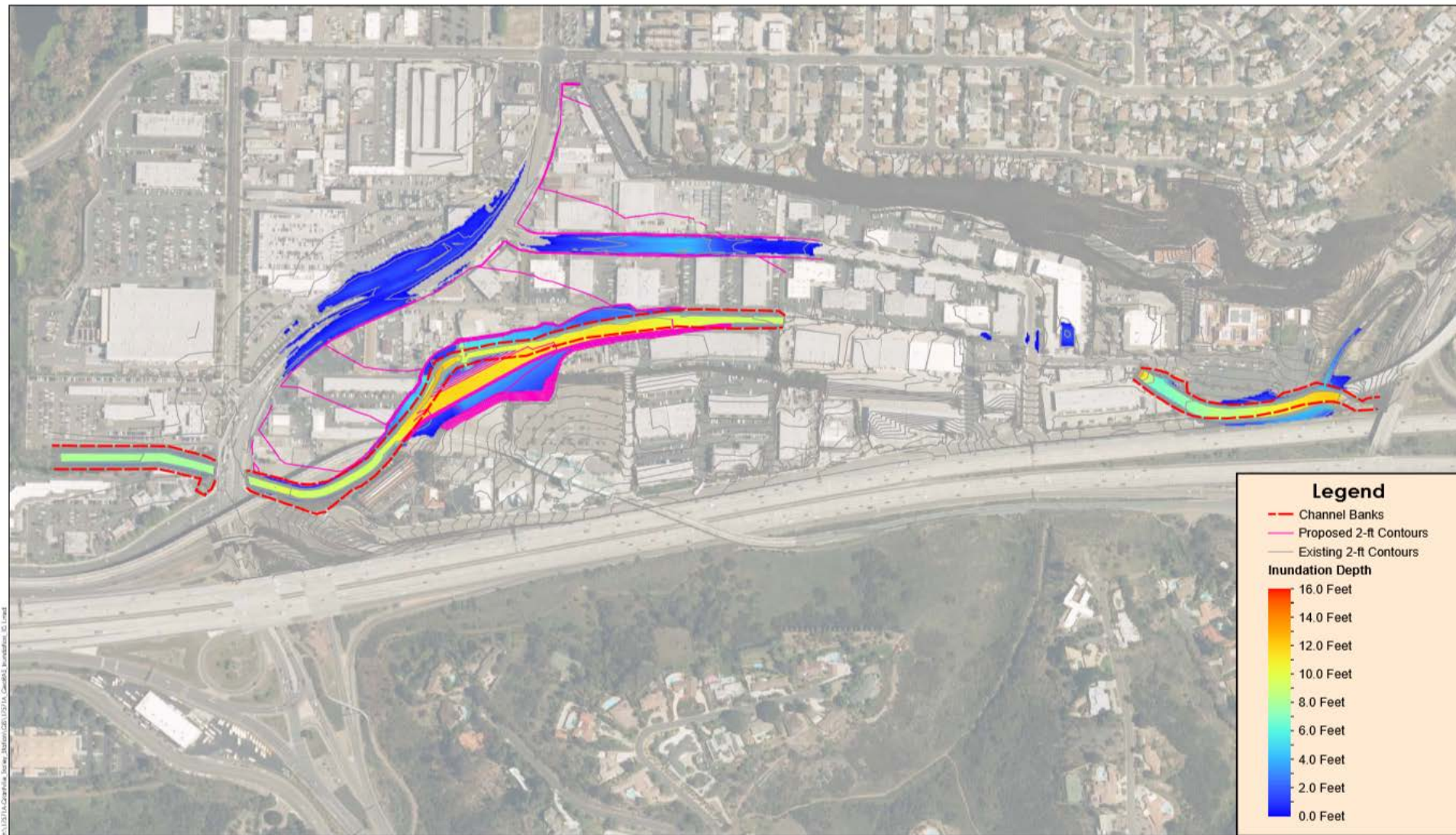
Oil Runoff



Conceptual Design-All Reaches

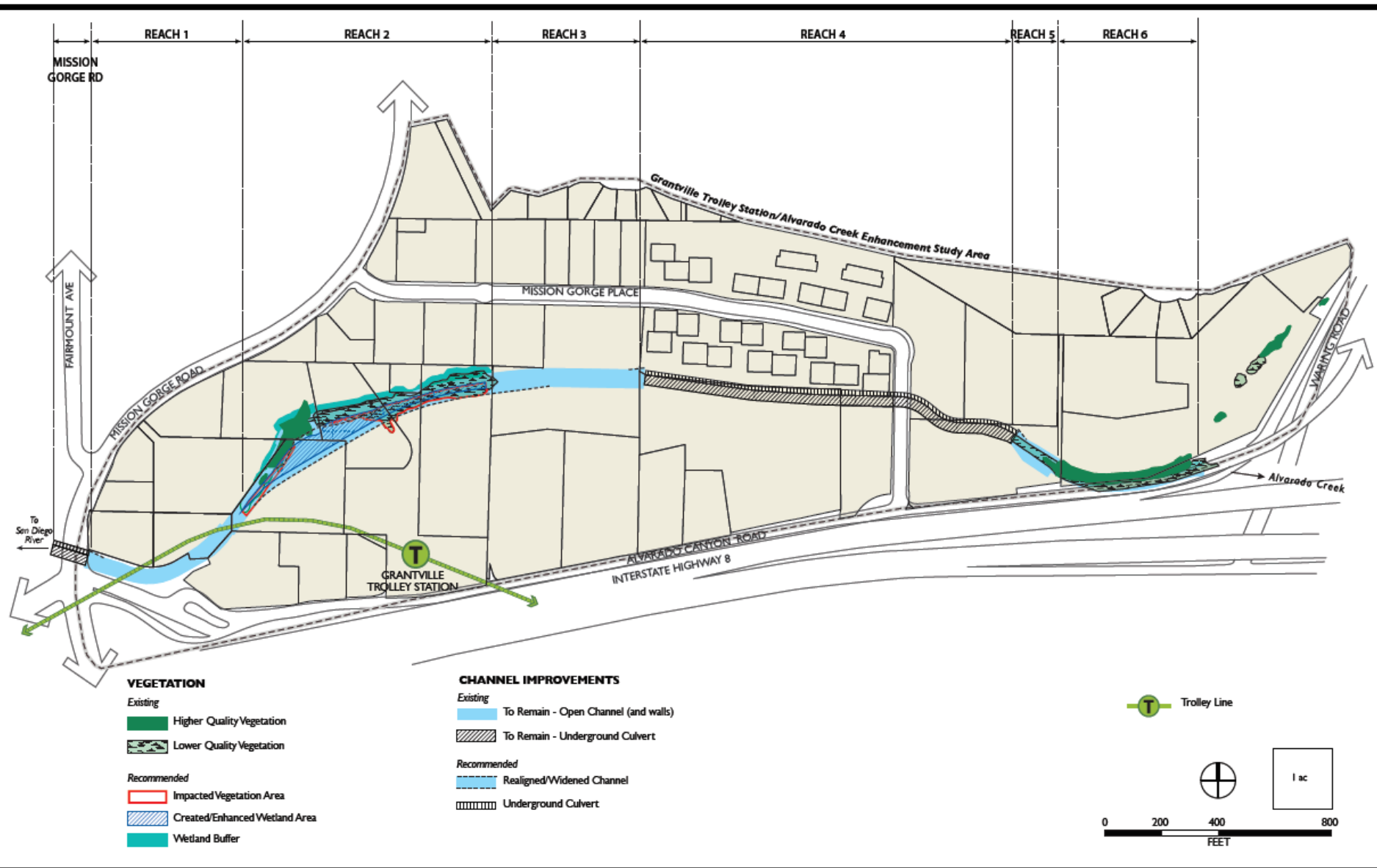


Proposed 100-Year Floodplain

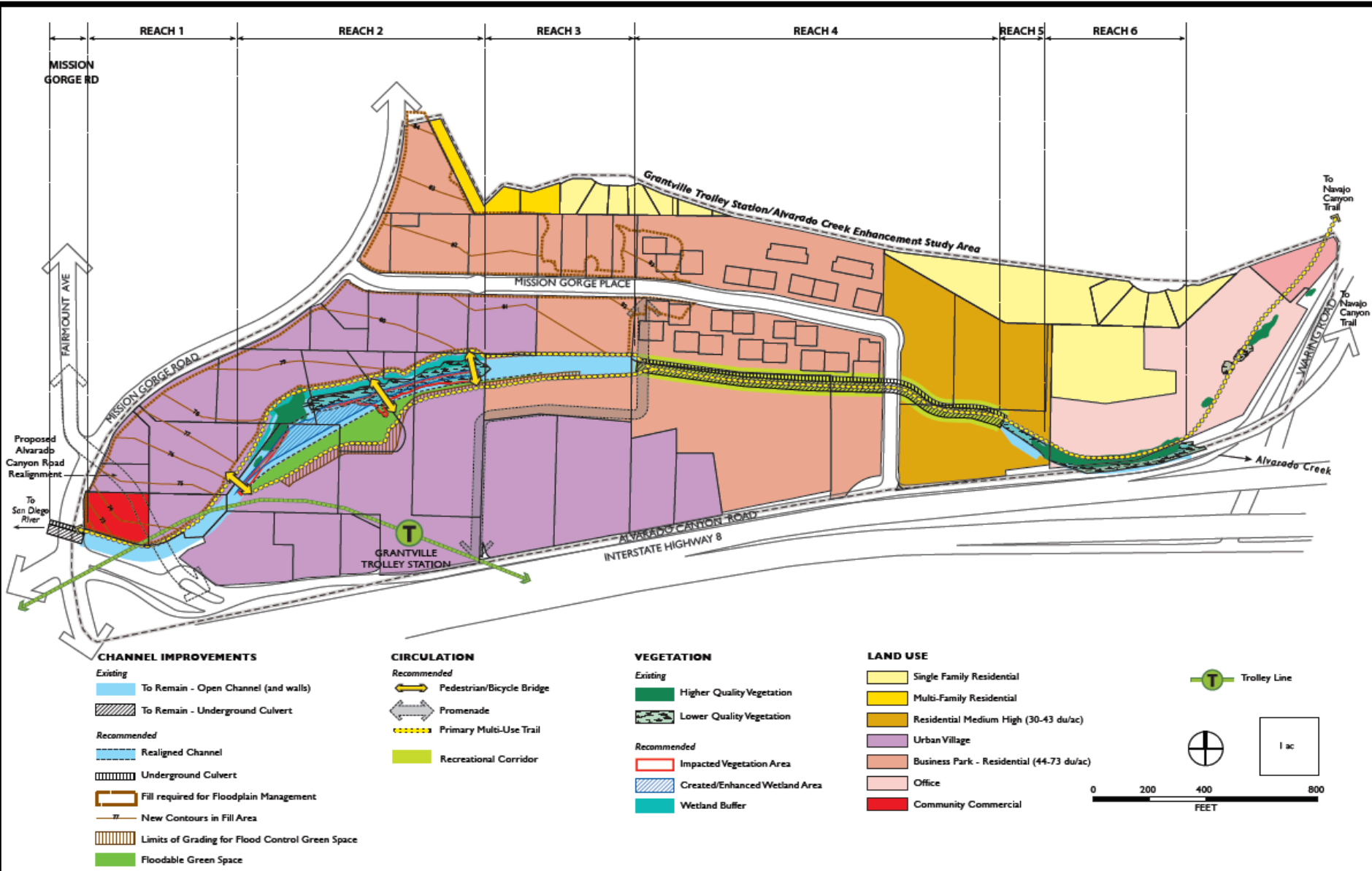


Biological Concerns

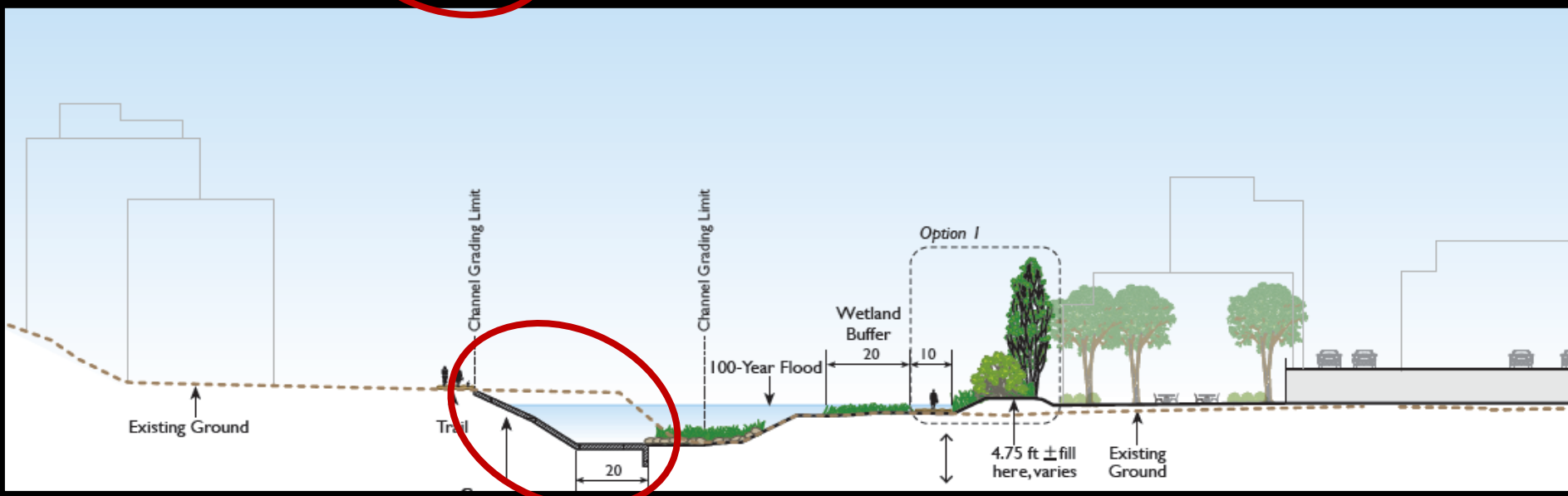
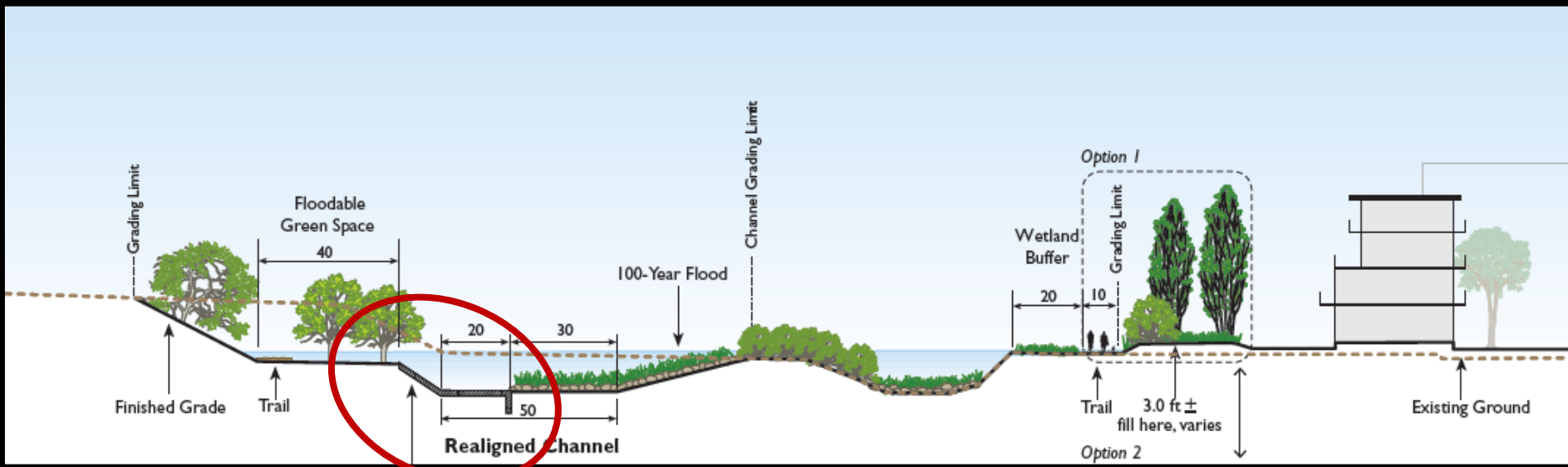
Biological Disturbance by the Numbers



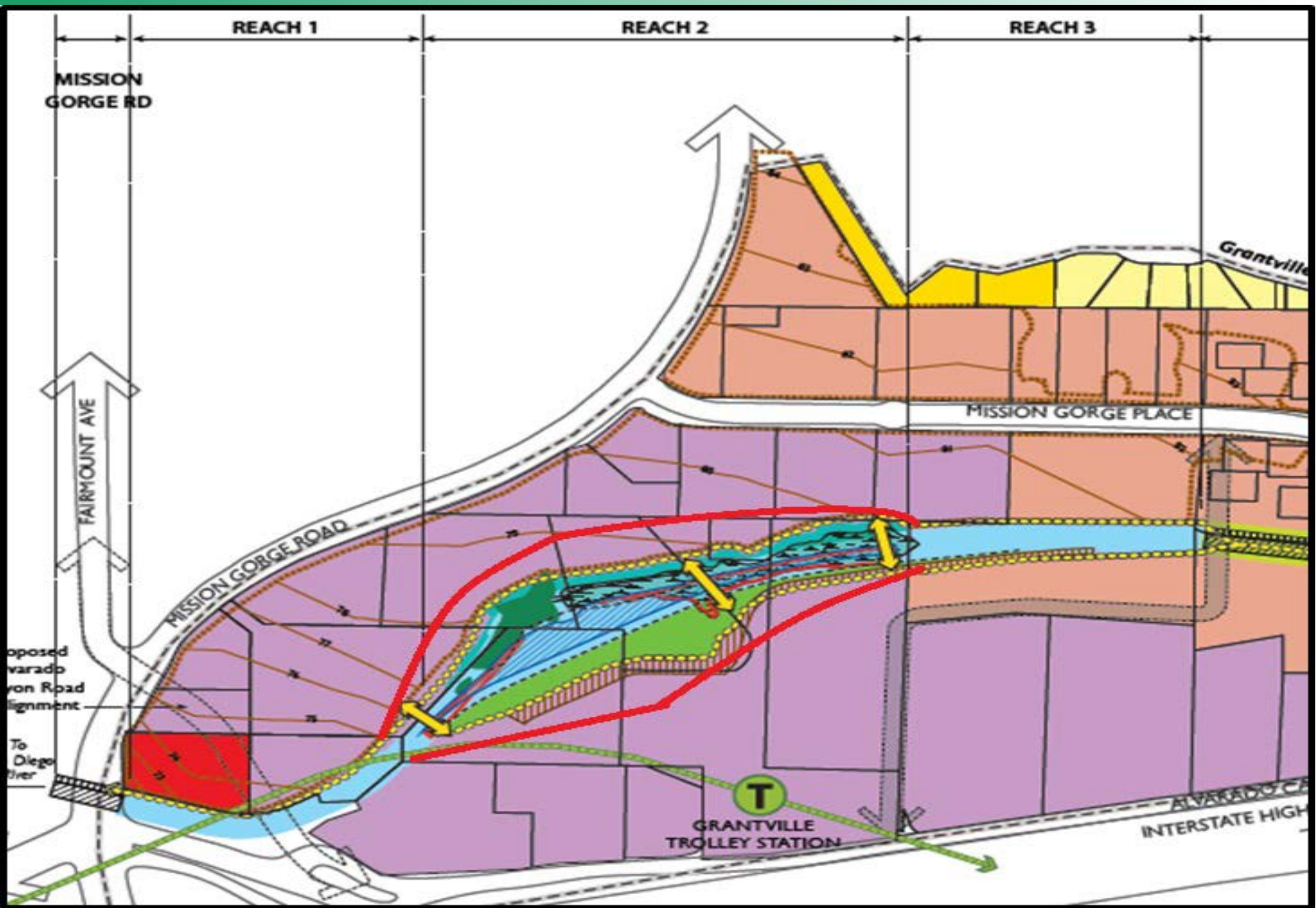
Conceptual Design-All Reaches



Addition of Concrete- Reach 2



GRANTVILLE TROLLEY STATION/ALVARADO CREEK ENHANCEMENT STUDY



California Order W-59-93

- No overall net loss and *long term net gain* in the quantity, quality, and permanence of wetlands acreage and values in California in a manner that fosters creativity, stewardship, and respect for private property.

Feasibility Criteria

- Annual flooding is managed within creek
- Water Quality is improved and storm water is managed
- Net increase in High Quality Vegetation and Wetlands (.84 acres created)
- Impacts to private property are minimized
- Biological impacts are avoided to the extend possible
- Pedestrian connectivity to Grantville Trolley Station
- Amenity and regional asset created



Implementation & Phasing

- RWQCB- Resolution R-9-2015-0041
 - *Staff support and oversight to achieve compliance with the Clean Water Act and Porter Cologne Water Quality Act.*
- Section 401 Water Quality Certification
 - *401 Permit to be phased over several years*
 - *Annual 401 permit fees paid*

Questions?

