



Agenda Item No. 12

Public Workshop

**Proposed Adoption of General Waste Discharge
Requirements for the Commercial Agricultural
Operations Regulatory Program**

June 22, 2016

San Diego Regional Water Quality Control Board

PRACTICAL VISION

Practical Vision Statement

Healthy waters realized through collaborative, outcome-focused efforts that support both human uses and sustainable ecosystems.

San Diego Water Board Values

Leadership

Stewardship

Communication

Transparency

DISCUSSION TOPICS

- * Overview of Agriculture in the San Diego Region
- * Agriculture and Water Quality
- * History of Regulation of Agriculture
- * Definitions
- * Overview of the Tentative General Orders
- * Overview of the Tentative Negative Declaration
- * Public Outreach & Schedule
- * Discussion
- * Closing Comments
- * *Note: No action will be taken at this meeting*

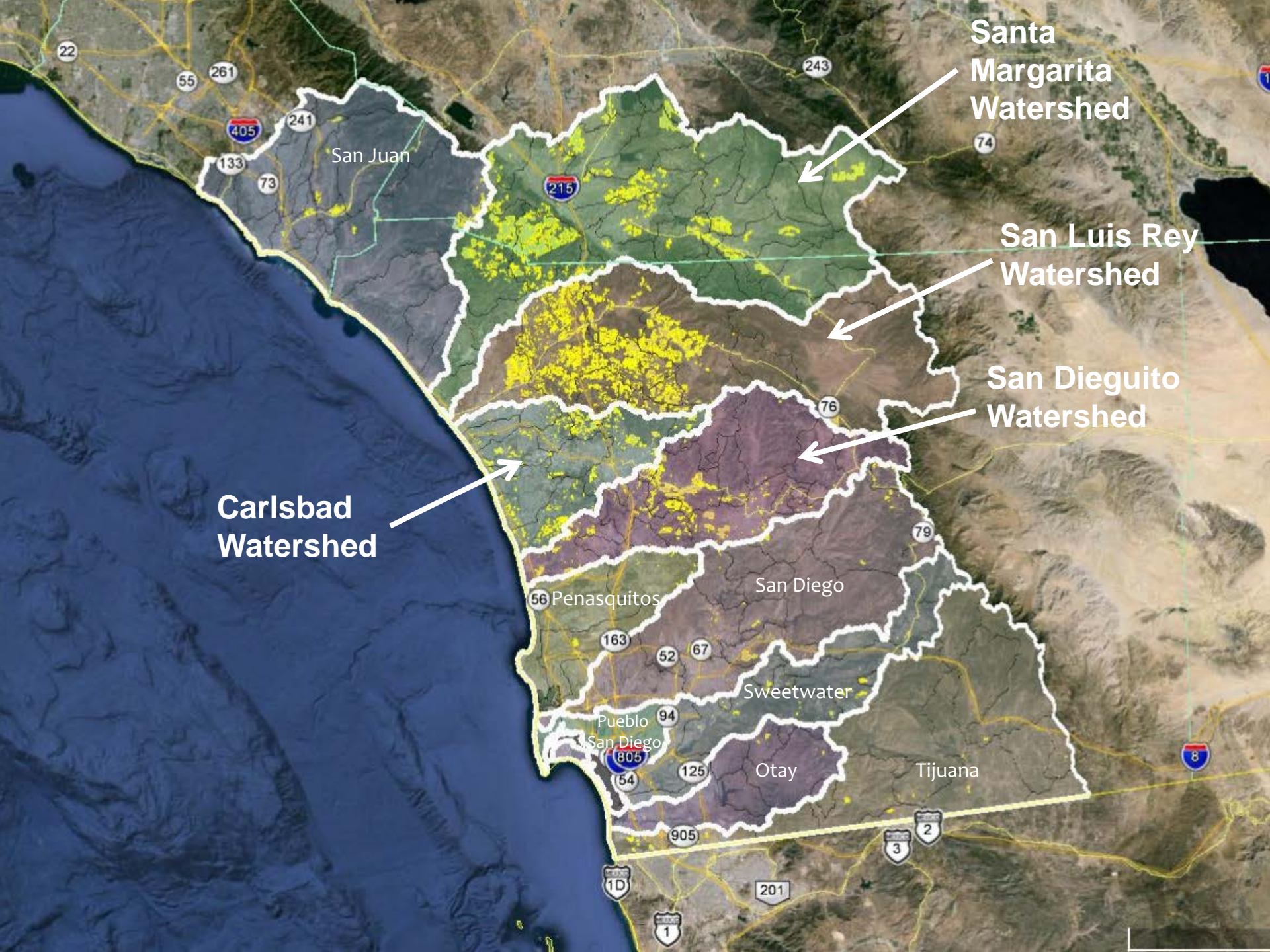
THE TENTATIVE ORDERS

- * Third-Party Group Order (R9-2016-0004)
- * Individual Order (R9-2016-0005)

OVERVIEW OF AGRICULTURE IN THE SAN DIEGO REGION

- * 6,000 Agricultural Operations
- * 70,000 Acres
- * Relatively small in size
- * Relatively profitable





Santa Margarita Watershed

San Luis Rey Watershed

San Dieguito Watershed

Carlsbad Watershed

San Juan

56 Penasquitos

San Diego

Sweetwater

Pueblo

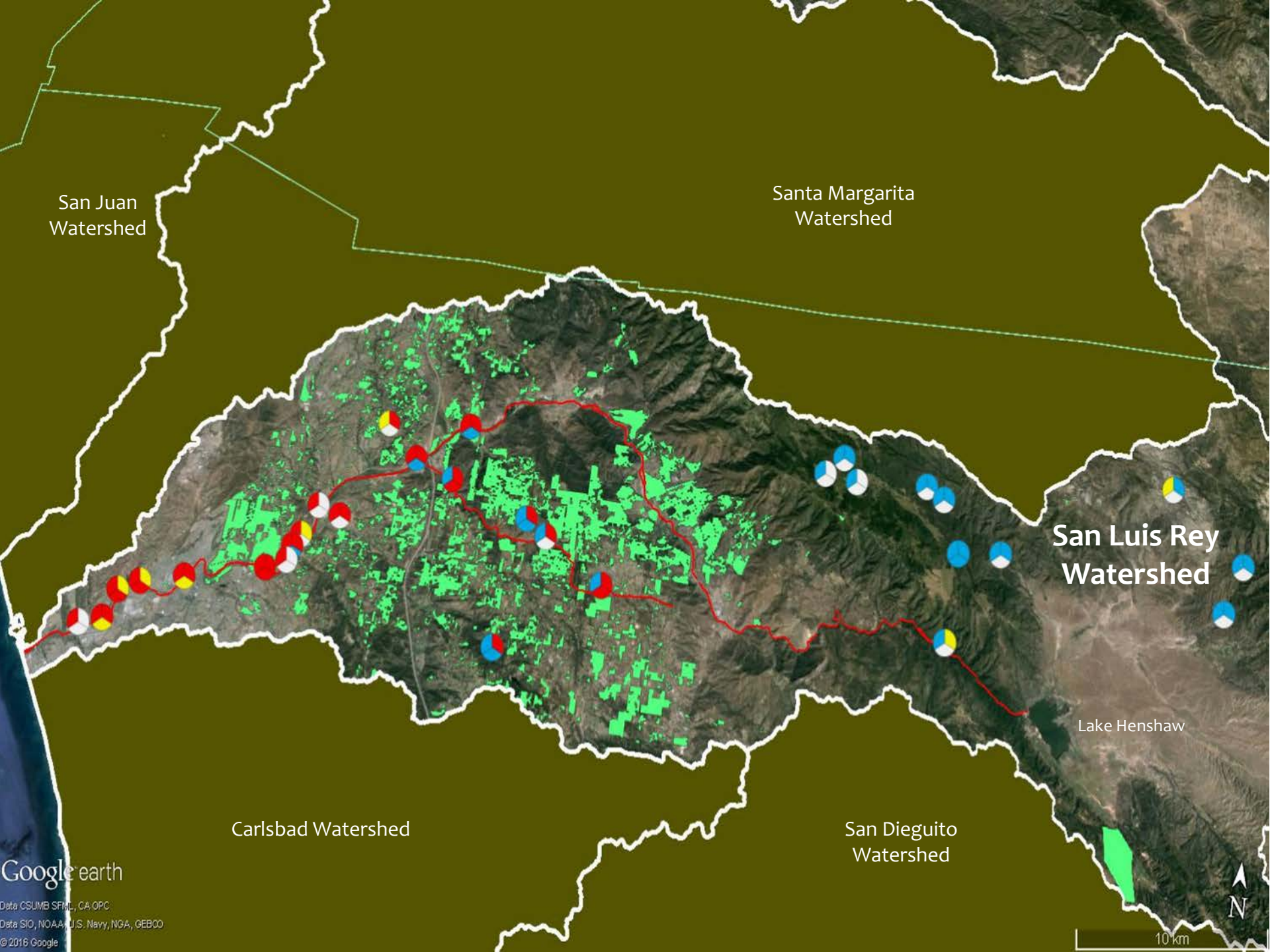
San Diego

Otay

Tijuana

WATER QUALITY AND AGRICULTURAL OPERATIONS

- * Irrigation Runoff and Storm Water Runoff can transport pollutants to Groundwater or Surface Water
- * Pollutants Include
 - * Nutrients
 - * Sediments
 - * Bacteria
 - * Pesticides



San Juan Watershed

Santa Margarita Watershed

San Luis Rey Watershed

Carlsbad Watershed

San Dieguito Watershed

Lake Henshaw

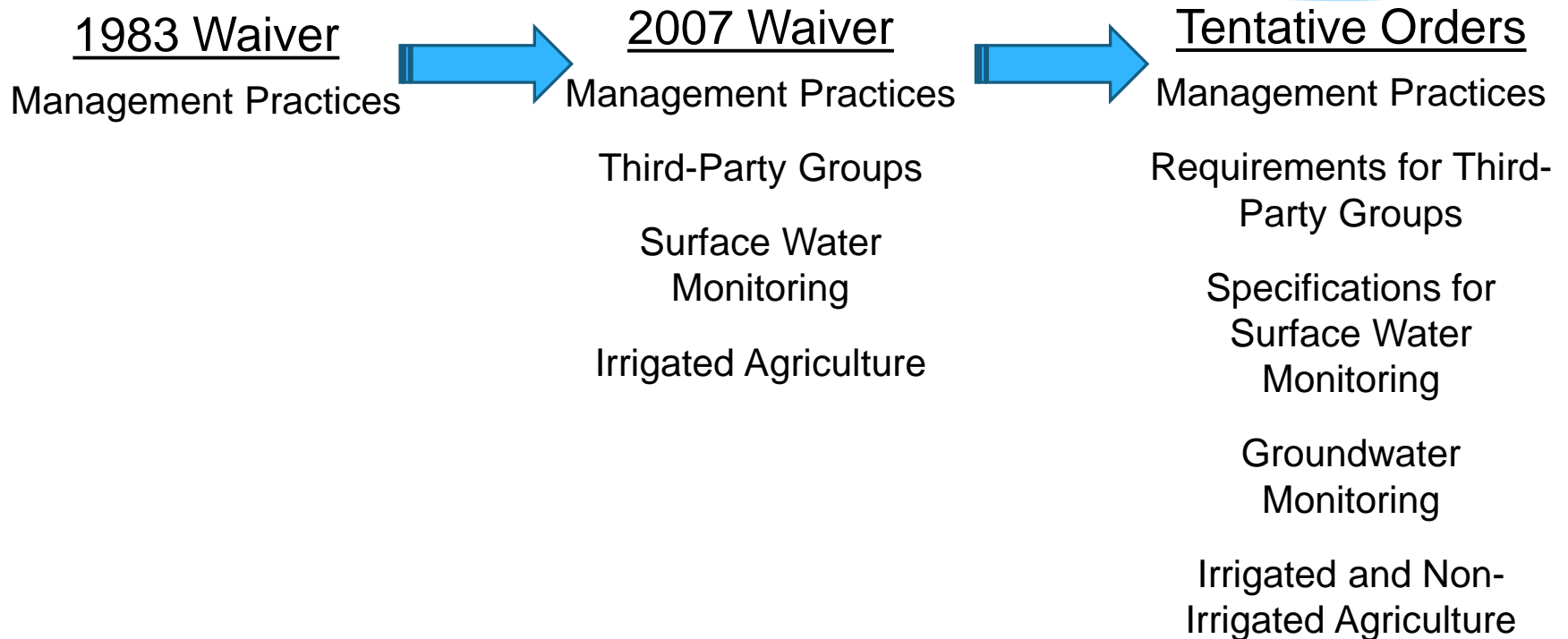
Google earth

Data CSUMB SFML, CA OPC
Data SIO, NOAA, U.S. Navy, NGA, GEBCO
© 2016 Google

10 km



PROGRESSION OF REGULATION OF AGRICULTURE IN THE SAN DIEGO REGION



DEFINITION

AGRICULTURAL OPERATION

- * Any agricultural business that produces crops with the intent to make a profit.
- * The San Diego Water Board presumes an intent to make a profit if at least one of the following criteria is met:
 - * IRS Form 1040 Schedule F *Profit or Loss from Farming*
 - * Agricultural Water Rates or Variance
 - * Pesticide Use Reporting Identification Number/Permit Number

DEFINITION

DISCHARGER

- * Any owner or operator of an Agricultural Operation that discharges, or threatens to discharge, wastes associated with agricultural activities into waters of the State in the San Diego Region.

DEFINITION

THIRD-PARTY GROUP

- * An organization approved by the San Diego Water Board to represent and assist Dischargers in carrying out the terms and conditions of this General Order.

DEFINITION

NON-STRUCTURAL MANAGEMENT PRACTICES

- * When and How to:
 - * Irrigate
 - * Fertilize
 - * Apply Agricultural Chemicals
- * Inspections
- * Planning
- * Training

DEFINITION

STRUCTURAL MANAGEMENT PRACTICES

- * Berms
- * Low Flow Irrigation
- * Gravel Bags
- * Fiber Rolls
- * Basins



OVERVIEW OF THE TENTATIVE ORDERS

- * Enrollment
- * Management Practices
- * Inspections
- * Water Quality Training
- * Monitoring and Reporting

OVERVIEW OF THE TENTATIVE ORDERS *ENROLLMENT*

Individual Order	Third-Party Group Order	
Enrollee	Member	Third-Party Group
180 Days after Adoption 90 Days Prior to Discharge	180 Days after Adoption 90 Days Prior to Discharge	Anytime
Notice of Intent	Notice of Intent	Request for Approval
Water Quality Protection Plan	Water Quality Protection Plan	--
Surface Water and Groundwater Monitoring Program Plan	--	Surface Water and Groundwater Monitoring Program Plan
--	One-Time Enrollment Fee	--

OVERVIEW OF THE TENTATIVE ORDERS

WATER QUALITY PROTECTION PLAN

- * Identifies Type and Location of Management Practices
- * Schedules for Implementation
- * Living Document

OVERVIEW OF THE TENTATIVE ORDERS *MANAGEMENT PRACTICES*

- * Total Maximum Daily Loads
- * Compost-Specific Management Practices

OVERVIEW OF THE TENTATIVE ORDERS

INSPECTIONS

Individual Order	Third-Party Group Order
Enrollee	Member
Quarterly Self-Inspections	Quarterly Self-Inspections
Annual Self-Assessment	Annual Self-Assessment
Submits to San Diego Water Board	Submits to Third-Party Group

OVERVIEW OF THE TENTATIVE ORDERS

WATER QUALITY TRAINING

- * Assists Discharger to Compliance with the Tentative Orders
- * University of California Cooperative Extension
- * Maintain Regular Contact with:
 - * Farm Bureau
 - * Other Agencies

OVERVIEW OF THE TENTATIVE ORDERS

SURFACE WATER AND GROUNDWATER MONITORING PROGRAM

Individual Order	Third-Party Group Order	
Enrollee	Member	Third-Party Group
Submits Surface Water and Groundwater Monitoring Program Plan with NOI	--	Submits Surface Water and Groundwater Monitoring Plan 180 days after approval
Groundwater Monitoring	May Conduct Groundwater Monitoring	May Conduct Groundwater Monitoring
Core Surface Water Monitoring Edge of Field	--	Core Surface Water Monitoring Receiving Water
--	--	Regional Surface Water Monitoring Receiving Water

OVERVIEW OF THE TENTATIVE ORDERS

GROUNDWATER MONITORING

Nitrate Concentration	Action
< 36 mg/L	<ul style="list-style-type: none">• Sample Once Every Five Years<ul style="list-style-type: none">• Conditions Monitoring: M1
≥ 36 mg/L	<ul style="list-style-type: none">• Develop and Implement WQRP• Sample Yearly<ul style="list-style-type: none">• Source Identification: M3• Performance Monitoring: M4
≥ 45 mg/L	<p>Immediately Notify:</p> <ul style="list-style-type: none">• San Diego Water Board• Local County Health Department• All Individuals Using the Well

OVERVIEW OF THE TENTATIVE ORDERS

CORE *SURFACE WATER MONITORING*

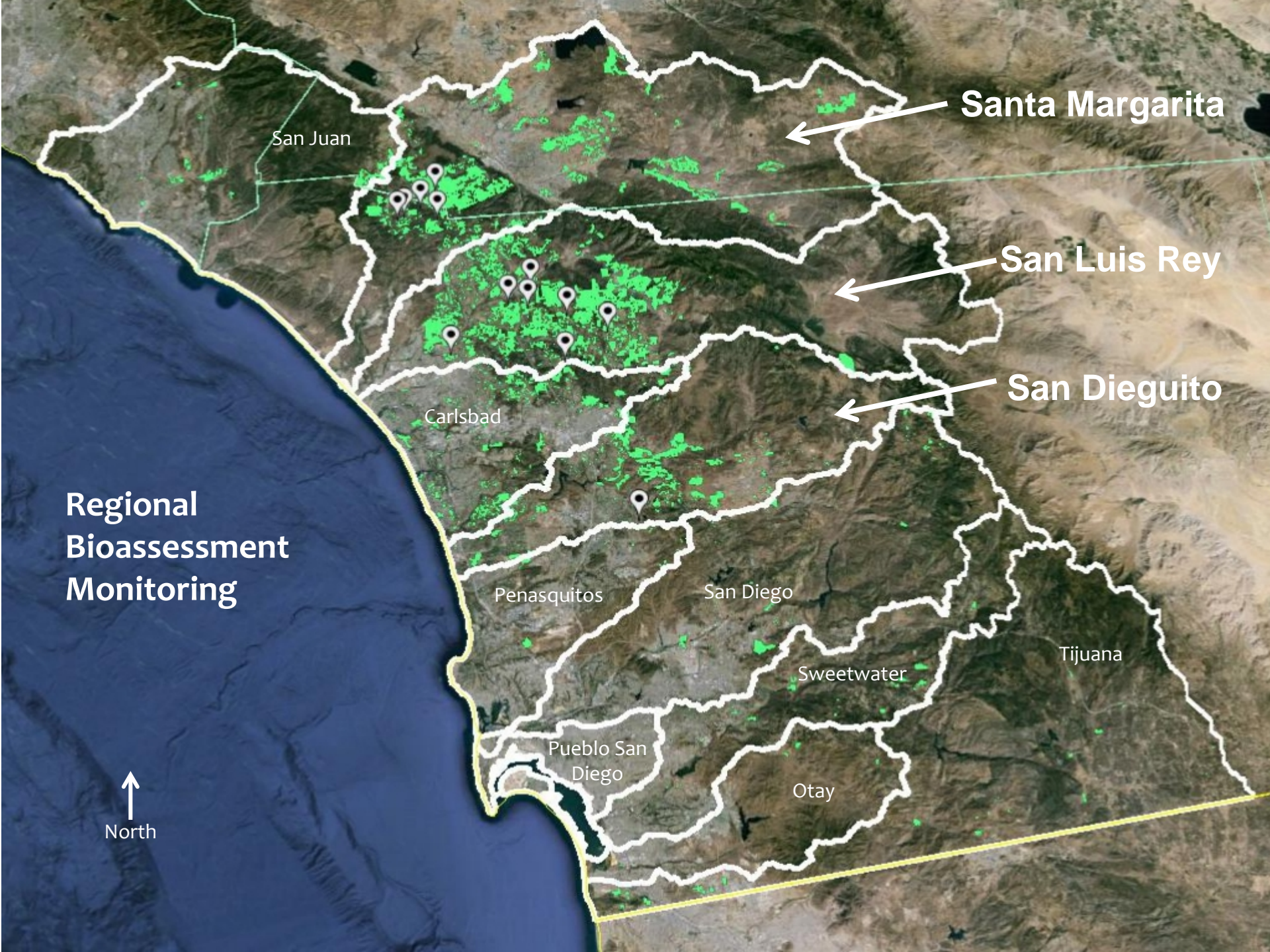
CONDITIONS MONITORING: M1

Individual Order	Group Order
Enrollee	Third-Party Group
Representative of Discharge	Representative of Group
Biannual Monitoring	Biannual Monitoring
Nutrients	Nutrients
Sediments	Sediments
Bacteria	Bacteria
Toxicity	Toxicity

OVERVIEW OF THE TENTATIVE ORDERS

WATER QUALITY RESTORATION PLAN

- * Exceedance of Water Quality Benchmark
 - * Groundwater: Single Exceedance
 - * Surface Water: 3 Exceedances out of 4 Monitoring Events
- * Documents Actions to be Taken to Attain Restore Water Quality
 - * Existing Conditions
 - * Suspected Sources
 - * Management Practices
 - * Schedule
 - * Monitoring Program



Santa Margarita

San Luis Rey

San Dieguito

San Juan

Carlsbad

Penasquitos

San Diego

Sweetwater

Tijuana

Pueblo San Diego

Otay

Regional Bioassessment Monitoring

North

OVERVIEW OF THE TENTATIVE ORDERS

REPORTING

Individual Order	Third-Party Group Order
Enrollee	Third-Party Group
Annual Self-Assessment Report <ul style="list-style-type: none"> • Monitoring Results • Quarterly Self-Inspections 	Annual Report <ul style="list-style-type: none"> • Monitoring Results • Member's Quarterly Self-Inspection Reports • Member's Annual Self-Assessment Report
--	Quarterly Membership Update Report

CALIFORNIA ENVIRONMENTAL QUALITY ACT - CEQA

- * San Diego Water Board is Lead Agency
- * Evaluate Environmental Impacts from Adoption of Tentative Orders

CALIFORNIA ENVIRONMENTAL QUALITY ACT - CEQA

INITIAL STUDY AND CHECKLIST

No Impact

- * Aesthetics
- * Cultural Resources
- * Hazards and Hazardous Waste
- * Land Use and Planning
- * Energy and Mineral Resources
- * Population and Housing
- * Public Services
- * Recreation
- * Transportation and Traffic

Less than Significant Impact

- * Agriculture and Forest Resources
- * Air Quality
- * Biological Resources
- * Hazards and Hazardous Waste
- * Geology and Soils
- * Greenhouse Gas Emissions
- * Hydrology and Water Quality
- * Noise
- * Utilities and Service Systems

CALIFORNIA ENVIRONMENTAL QUALITY ACT - CEQA

IMPACT FROM MANAGEMENT PRACTICES

- * Localized
- * Short-Term

CALIFORNIA ENVIRONMENTAL QUALITY ACT - CEQA

ESTIMATED COMPLIANCE COSTS

FOUR ACRE AGRICULTURAL OPERATION

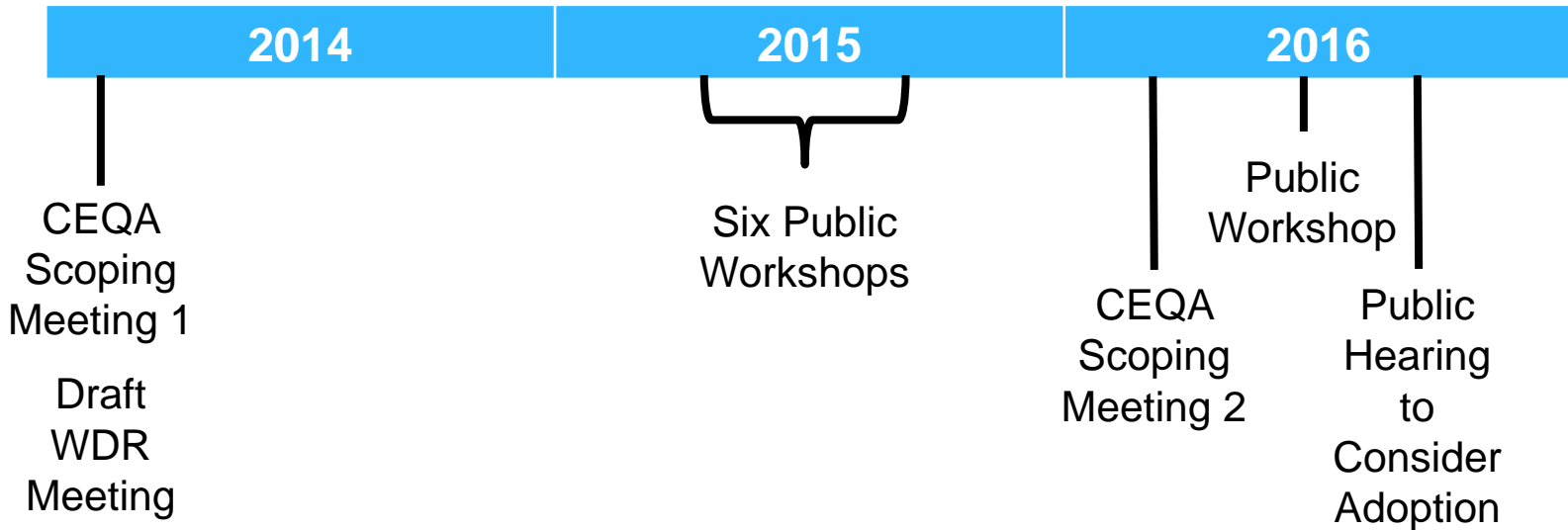
Cost	Individual Order	Third-Party Group Order
One-Time Costs		
Enrollment Fee		\$50
MP Installation	\$0 to \$12,000	\$0 to \$12,000
<u>Total</u>	<u>\$0 to \$12,050</u>	<u>\$50 to \$12,000</u>
Annual Costs		
Annual Fee	\$460	\$3
MP Maintenance	\$0 to \$5,000	\$0 to \$5,000
Monitoring/Reporting	\$20,000	\$40
<u>Total</u>	<u>\$0 to \$25,460</u>	<u>\$43 to \$5,043</u>

CALIFORNIA ENVIRONMENTAL QUALITY ACT - CEQA

COST CONSIDERATIONS/COST SAVINGS

- * Cost Considerations
 - * Management Practices
 - * Monitoring Costs
- * Opportunities for Cost Savings
 - * Membership in a Third-Party Group
 - * Grants
 - * 319-H Grants
 - * CDFA

PUBLIC OUTREACH & SCHEDULE




SUMMARY OF KEY ISSUES

- * Goal to Achieve Healthy Waters
- * Used a Collaborative Process
- * Meaningful Requirements to Control Nonpoint Source Pollution
- * Costs were Considered



DISCUSSION



Submit written comments by
July 29, 2016

For additional information please contact:
Barry.Pulver@waterboards.ca.gov
(619)521-3381

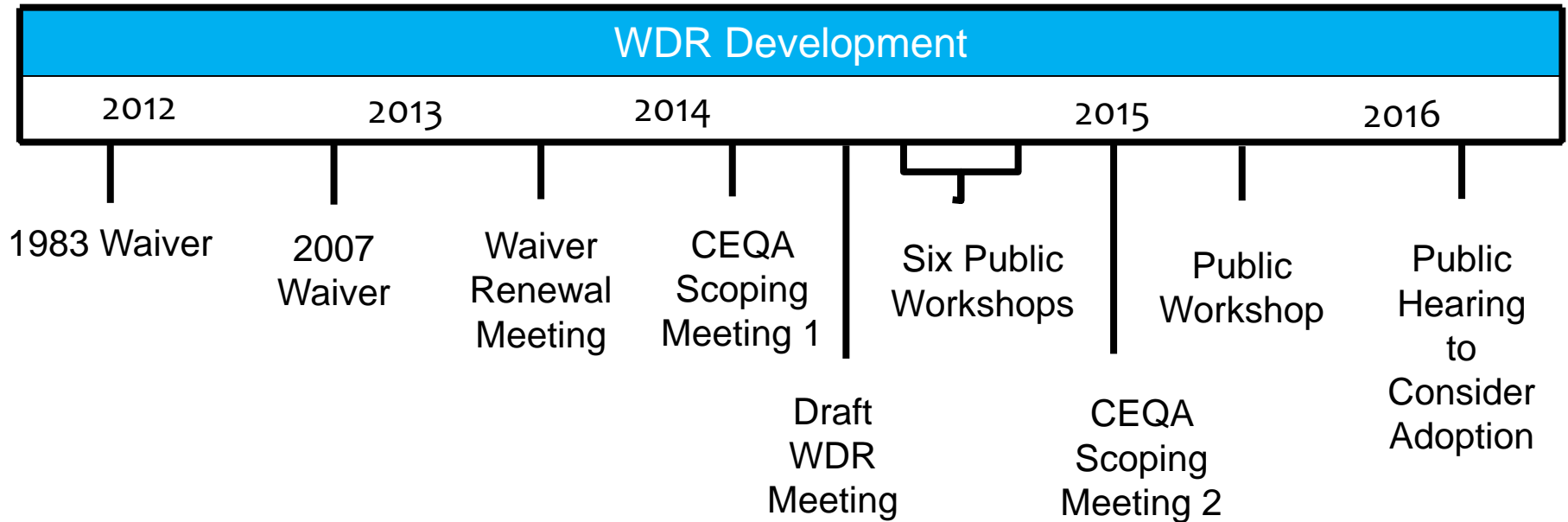
REQUIREMENTS FOR THIRD-PARTY GROUPS

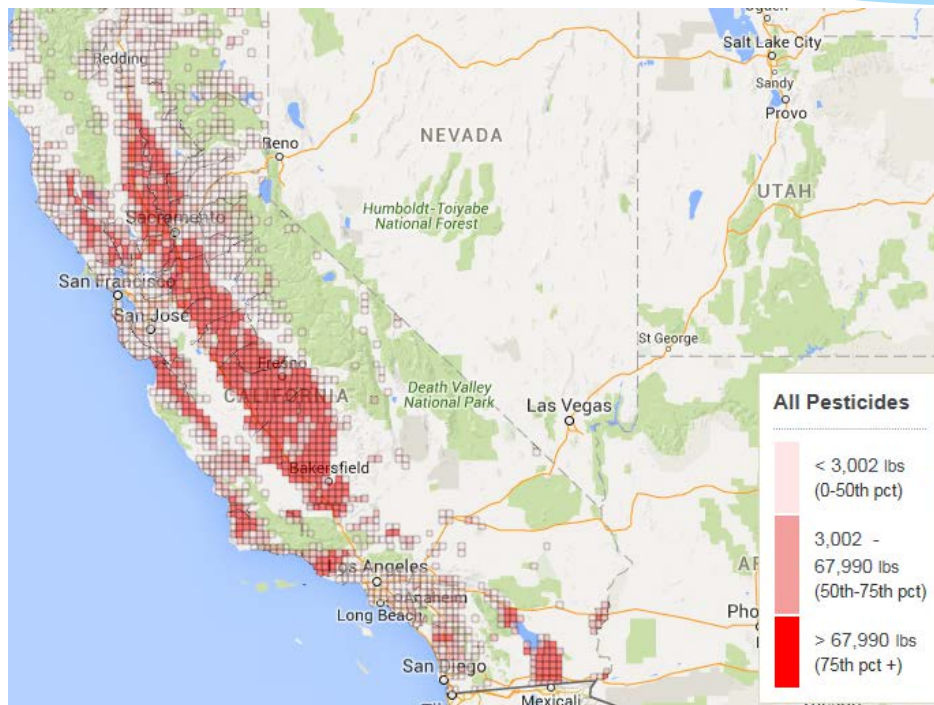
- Not Owned or Managed by a Member
- Able to Perform Duties
- Manage the Collection and Payment of Annual WDR Fees
- Prepare Surface Water and Groundwater Program Plans
- Conduct Surface Water Monitoring
- Submit Quarterly Membership Update Reports
- Submit Annual Reports
- Notify Members of Notice of Violations
- Provide Members Financial Reports

FY 2015-2016 ANNUAL WDR FEES

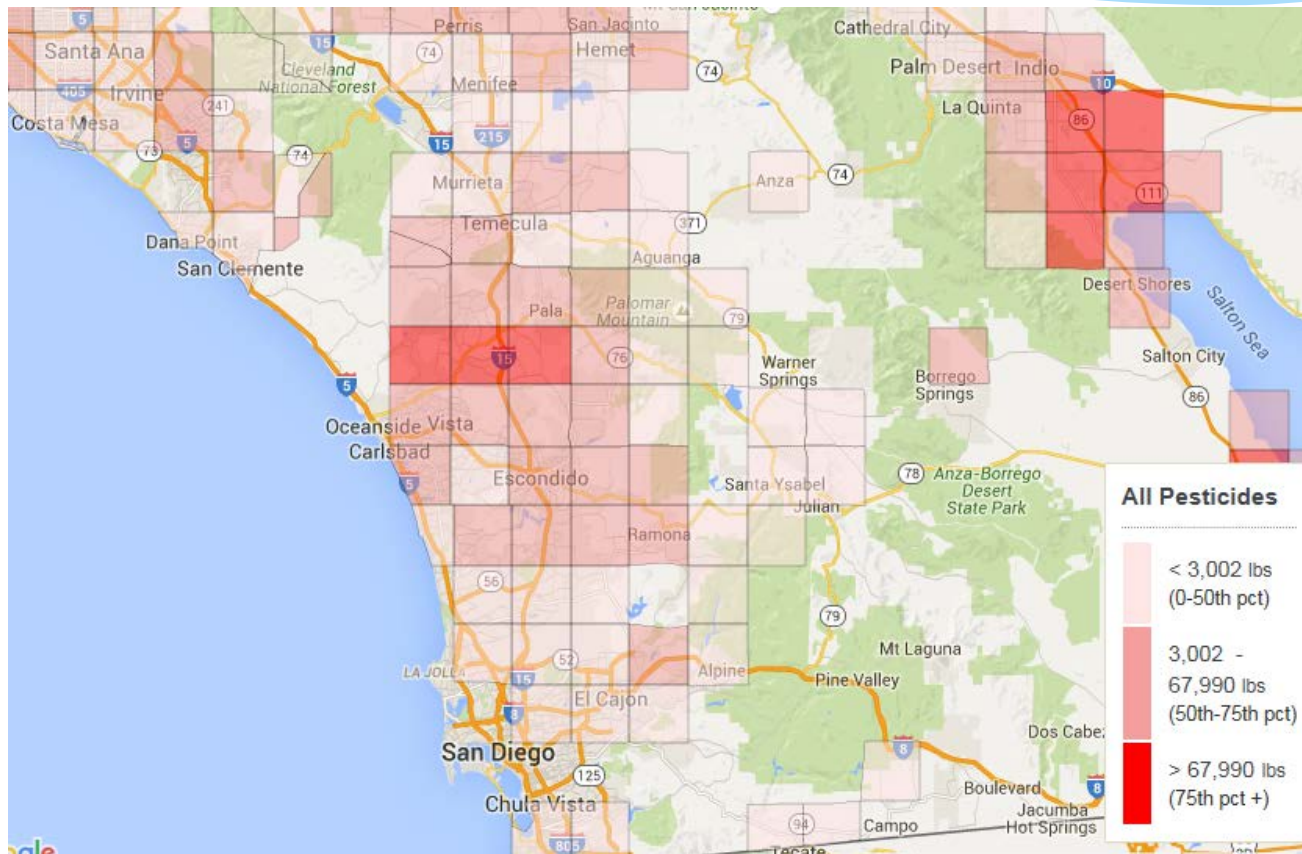
Individual Order					Group Order
Acres	Base Fee	Acreage Fee	Min. Fee	Max. Fee	Acreage Fee
0 – 10	\$404	\$13.50	\$404	\$538	\$0.75
11 – 100	\$1,010	\$6.70	\$1,084	\$1,680	
101 – 500	\$2,692	\$3.40	\$3,035	\$4,392	
501+	\$5,384	\$2.70	\$6,737	No Max.	

PUBLIC OUTREACH & SCHEDULE





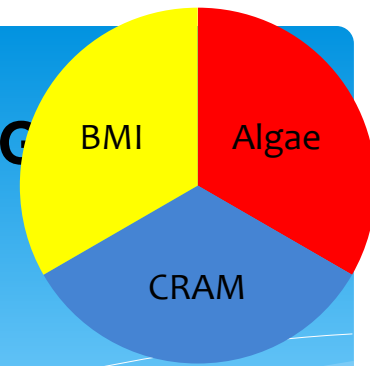




OVERVIEW OF AGRICULTURE IN THE SAN DIEGO REGION

San Juan
Watershed

Santa Margarita
Watershed



- * San Diego County
 - * Avocado
 - * Citrus
- * Riverside County
 - * Avocado
 - * Wine Grapes
- * Orange County
 - * Avocado
 - * Nursery

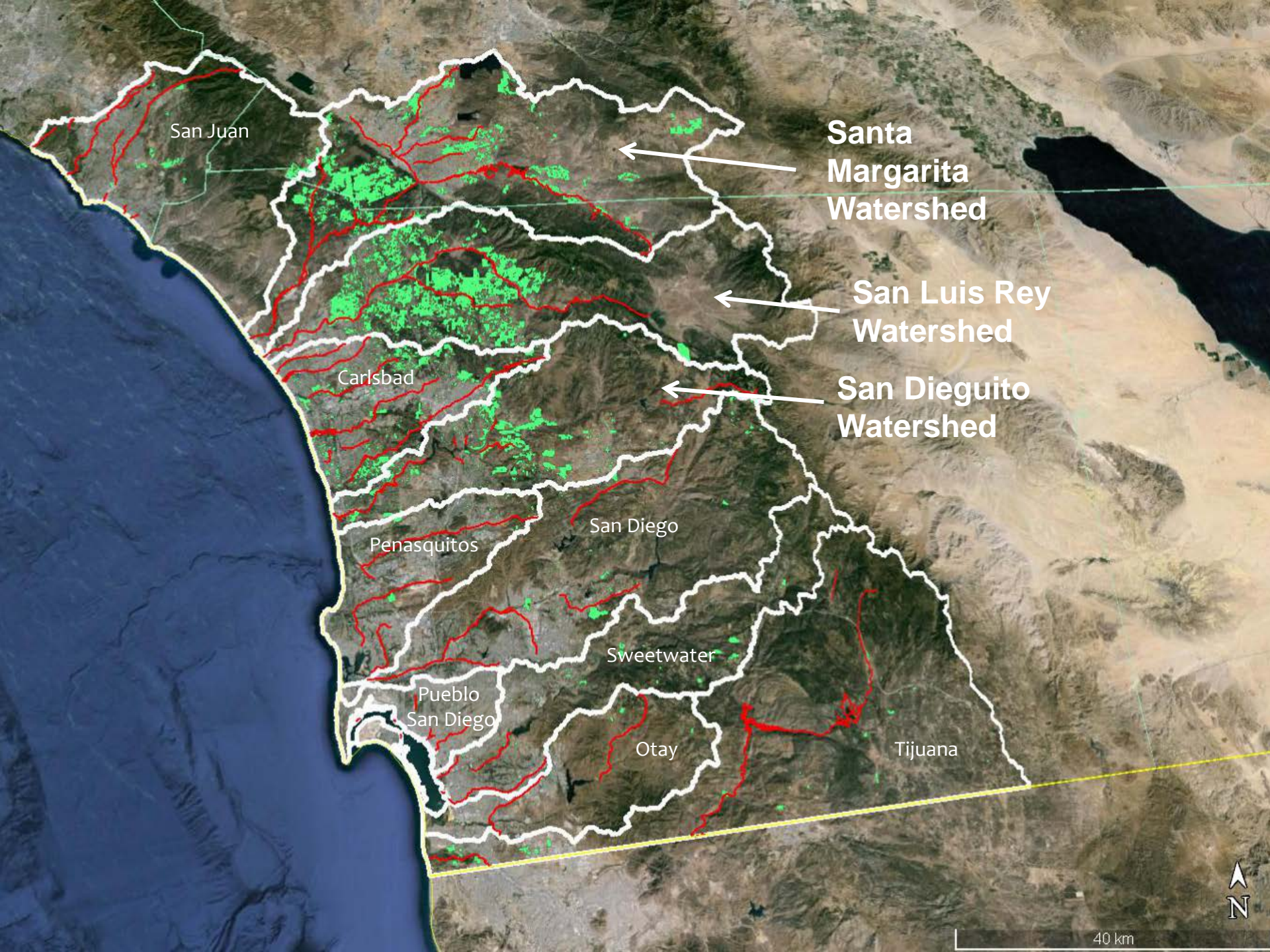
OVERVIEW OF THE TENTATIVE ORDERS

- * Basin Plan (including TMDLs)
 - * Establish water quality standards
- * Nonpoint Source Policy
 - * Require management practices and monitoring
- * Agricultural Expert Panel Report
 - * Require groundwater monitoring for drinking water supply wells
- * State Water Board Draft Order
 - * Require follow up monitoring for water quality standard exceedances

DEFINITION

NONPOINT SOURCE POLLUTION

- * Nonpoint Source Pollution does not originate from regulated point sources and comes from many diffuse sources.



San Juan

Santa Margarita Watershed

San Luis Rey Watershed

San Dieguito Watershed

Carlsbad

Penasquitos

San Diego

Sweetwater

Pueblo San Diego

Otay

Tijuana



40 km