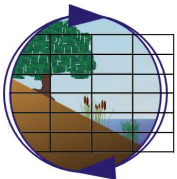
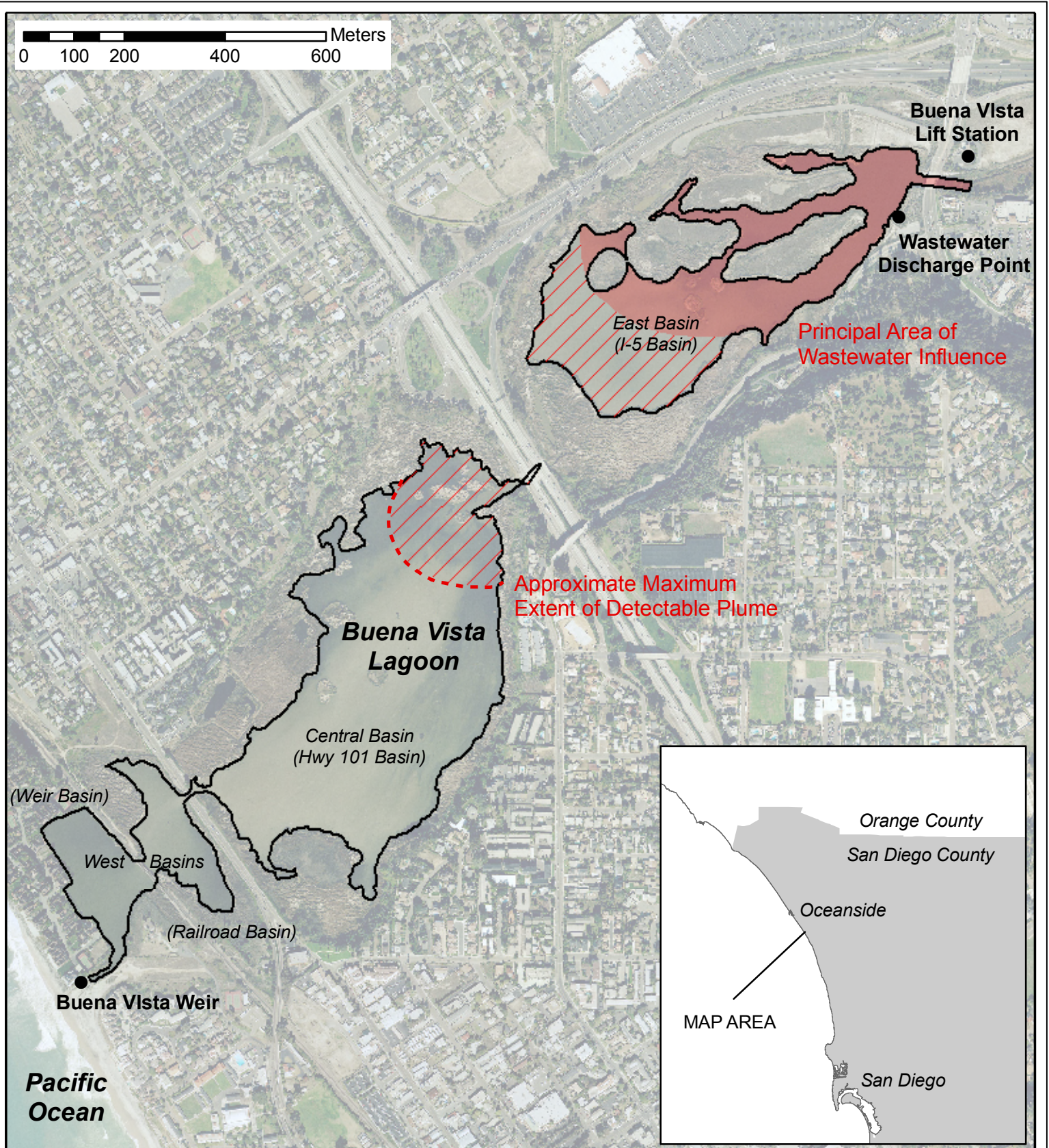


Item No. 6  
Supporting Document 1  
March 12, 2008

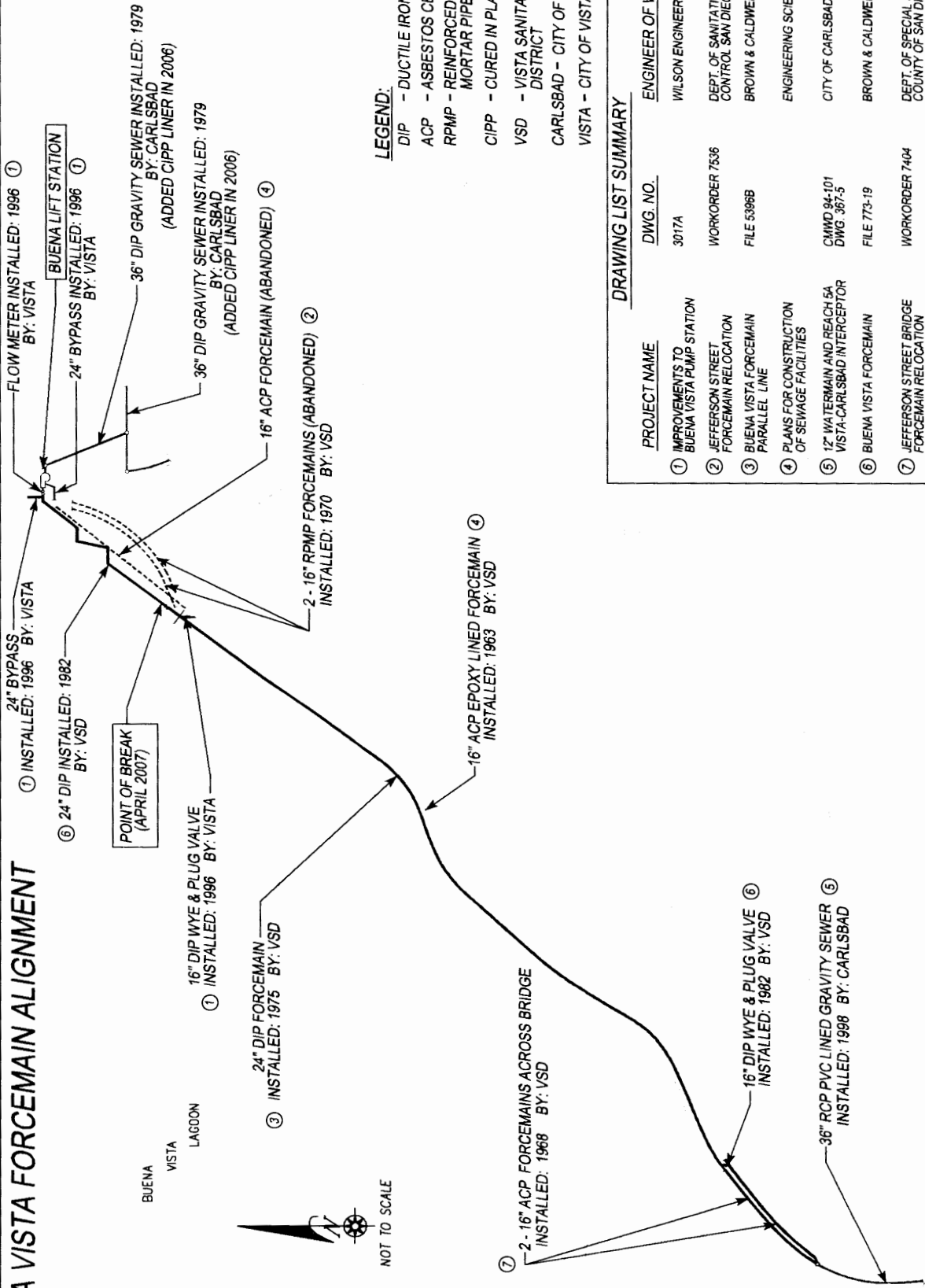




**Incident Area Map**  
Buena Vista Sewer Force Main Discharge  
April 2007

**Figure**  
**1**

# BUENA VISTA FORCEMAIN ALIGNMENT



- LEGEND:**
- DIP - DUCTILE IRON PIPE
  - ACP - ASBESTOS CEMENT PIPE
  - RPMP - REINFORCED PLASTIC MORTAR PIPE
  - CIPP - CURED IN PLACE PIPE
  - VSD - VISTA SANITATION DISTRICT
  - CARLSBAD - CITY OF CARLSBAD
  - VISTA - CITY OF VISTA

## DRAWING LIST SUMMARY

PROJECT NAME	DWG. NO.	ENGINEER OF WORK
① IMPROVEMENTS TO BUENA VISTA PUMP STATION	3017A	WILSON ENGINEERING
② JEFFERSON STREET FORCEMAIN RELOCATION	WORKORDER 7536	DEPT. OF SANITATION & FLOOD CONTROL SAN DIEGO COUNTY
③ BUENA VISTA FORCEMAIN PARALLEL LINE	FILE 5396B	BROWN & CALDWELL
④ PLANS FOR CONSTRUCTION OF SEWAGE FACILITIES		ENGINEERING SCIENCE, INC.
⑤ 12" WATERMAIN AND REACH 5A VISTA-CARLSBAD INTERCEPTOR	CMWD 94-101 DWG. 367-5	CITY OF CARLSBAD
⑥ BUENA VISTA FORCEMAIN	FILE 773-19	BROWN & CALDWELL
⑦ JEFFERSON STREET BRIDGE FORCEMAIN RELOCATION	WORKORDER 7404	DEPT. OF SPECIAL SERVICES COUNTY OF SAN DIEGO