



# **General Waste Discharge Requirements for the Commercial Agricultural Operations Regulatory Program**

December 15, 2016

San Diego Regional Water Quality Control Board

# THE ORDERS

Order No. R9-2016-0004, *General Waste Discharge Requirements for Discharges from Commercial Agricultural Operations for Dischargers that are Members of a Third-Party Group in the San Diego Region*  
(Third-Party General Order)

Order No. R9-2016-0005, *General Waste Discharge Requirements for Discharges from Commercial Agricultural Operations for Dischargers Not Participating in a Third-Party Group in the San Diego Region*  
(Individual General Order)

# DEFINITION

## *AGRICULTURAL OPERATION*

Any agricultural business that produces crops with the intent to make a profit.

- IRS Form 1040 Schedule F *Profit or Loss from Farming*
- Agricultural Water Rates or Variance
- Pesticide Use Reporting Identification Number/Permit Number



## DEFINITION

# *AGRICULTURE NOT COVERED BY GENERAL ORDERS*

- Hobby growers, gardeners
- Agricultural Operations with existing coverage through applicable Waste Discharge Requirements, National Pollutant Discharge Elimination Permits
- Medicinal cannabis operations
- Confined animal feeding operations
- Grazing land
- Completely enclosed growing operations with no potential waste discharge to the waters of the State



## DEFINITION

### *THIRD-PARTY GROUP*

An organization approved by the San Diego Water Board to represent and assist Agricultural Operations in carrying out the terms and conditions of the Third-Party General Order

**DEFINITION**  
*MEMBER*

An Agricultural Operation that belongs  
to a Third-Party Group

# ENROLLMENT DEADLINE FOR EXISTING AGRICULTURAL OPERATIONS

Deadline for Enrollment  
August 7, 2017

## KEY REQUIREMENT

Implement effective management practices to prevent or reduce waste discharges to waters of the State that:

- Cause or contribute to exceedances of applicable water quality objectives and criteria
- Unreasonably affect beneficial uses
- Cause or contribute to a condition of pollution or nuisance in waters of the State



# PROCESS TO MEET KEY REQUIREMENT

- Waste Discharge Control Requirements
- Water Quality Protection Plan
- Inspections
- Surface Water and Groundwater Monitoring Programs
- Water Quality Restoration Plan

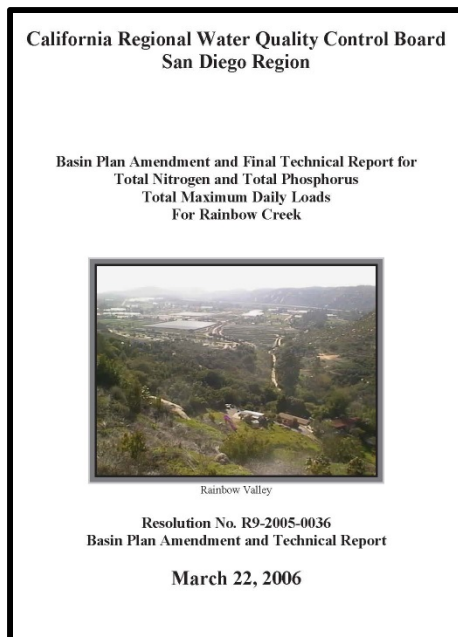
# WASTE DISCHARGE CONTROL REQUIREMENTS

## *NUTRIENT MANAGEMENT*

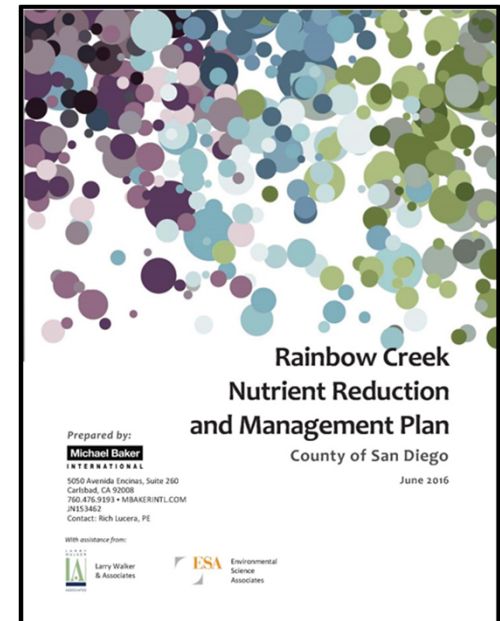
- Avoid the application of fertilizers within three days prior to a predicted rain event
- Implement proper handling, storage, disposal and management of fertilizers
- Apply fertilizers in accordance with the manufacturer's label
- Maintain a minimum 100 foot buffer zone between compost piles and all surface waterbodies

# WASTE DISCHARGE CONTROL REQUIREMENTS

## *RAINBOW CREEK NITROGEN AND PHOSPHOURS TMDL*



- Numeric Targets
- Load Allocations
- Rainbow Creek Nutrient Reduction Management Plan
- Reporting



# WATER QUALITY PROTECTION PLAN

Identifies type and location currently employed and planned management practices to reduce or minimize discharges of wastes to waters of the State

# INSPECTIONS

## QUARTERLY SELF-INSPECTIONS

- Observe effectiveness of structural management practices
- Document repairs if needed
- Submit with Annual Self-Assessment Report

QUARTERLY SELF-INSPECTION REPORT				
Order No. R9 2016-0004, General Waste Discharge Requirements for Discharges from Commercial Agricultural Operations for Dischargers that are Members of a Third-Party Group in the San Diego Region				
<b>PART A - AGRICULTURAL OPERATION INFORMATION</b>				
Name of Agricultural Operation:				
Address:		City:	Zip:	
APN:				
Name of Third-Party Group:				
Owner/Operator:		Phone No.:		
Address:		City:	Zip:	
<b>PART B - INSPECTION INFORMATION</b>				
Inspection Conducted by:			Phone No:	
Inspection Date:		Inspection Time:	Was it Raining?:	
<b>PART C - OBSERVATIONS – Attach photographs to form</b>				
Irrigation System Inspection Items	Yes	No	NA	Comments
Was irrigation system inspected?				
Was system operating when inspected?				
Were photos taken? (if yes please attach the photos)				
Were leaks/overspray observed?				
Does irrigation runoff remain on the property?				
Were repairs to irrigation system made?				
Other observations?				

# INSPECTIONS

## ANNUAL SELF-ASSESSMENT

- Evaluate effectiveness of Water Quality Protection Plan
- Identify additional management practices if needed
- Address incidents of non-compliance

ANNUAL SELF-ASSESSMENT REPORT			
Order No. R9-2016-0004, General Waste Discharge Requirements for Discharges from Commercial Agricultural Operations for Dischargers that are Members of a Third-Party Group in the San Diego Region			
FOR YEAR ENDING: _____			
<b>PART A - FACILITY INFORMATION:</b>			
Name: _____			
Address: _____		City: _____	Zip: _____
Contact Person: _____		No. of Irrigated + Non-Irrigated Acres: _____	
Telephone: _____		Email: _____	
Name of Third-Party Group: _____			
Assessor Parcel Number(s): _____			
Type of crops grown on each parcel: _____			
<b>PART B - PROPERTY OWNER INFORMATION</b>			
Name: _____			
Mailing Address: _____			
City: _____		State: _____	Zip: _____
Telephone: _____		Fax: _____	Email: _____
<b>PART C - AGRICULTURAL OPERATION OWNER INFORMATION</b>			
Name: _____			
Mailing Address: _____			
City: _____		State: _____	Zip: _____
Telephone: _____		Fax: _____	Email: _____
<b>PART D - OPERATOR INFORMATION</b>			
Name: _____			
Mailing Address: _____			
City: _____		State: _____	Zip: _____
County: _____		State: _____	Zip: _____
Telephone: _____		Fax: _____	Email: _____

# SURFACE WATER AND GROUNDWATER MONITORING PROGRAM

## *CORE MONITORING – SURFACE WATER*

### Core monitoring questions:

- How effective are the management practices at preventing or reducing discharge of wastes from the Agricultural Operations that are causing or contributing to exceedances of applicable water quality standards in surface water and groundwater?
- What effect, if any, have Agricultural Operations had on surface water and groundwater quality?

# SURFACE WATER AND GROUNDWATER MONITORING PROGRAM

## *CORE MONITORING – SURFACE WATER*

- Once during dry season, once during wet season
- Monitoring parameters
  - Nutrients
  - Bacteria
  - Chronic Toxicity
  - General Chemistry: DO, TSS, TDS, pH, Temperature
  - Stream Characteristics: Cross sectional area, flow, velocity



# SURFACE WATER AND GROUNDWATER MONITORING PROGRAM

## CORE MONITORING – GROUNDWATER

- If sample exceeds 80% of nitrate Maximum Contaminate Level (MCL) additional monitoring is required
- If sample exceeds nitrate MCL notifications required and preparation and implementation of a Water Quality Restoration Plan



# SURFACE WATER AND GROUNDWATER MONITORING PROGRAM

## *REGIONAL MONITORING – THIRD-PARTY GROUP*

### Regional monitoring questions:

- What effect, if any, have the Members' Agricultural Operations collectively had on regional surface water quality?
- Are waterbody conditions in the areas with commercial agriculture in the San Diego Region getting better or worse?

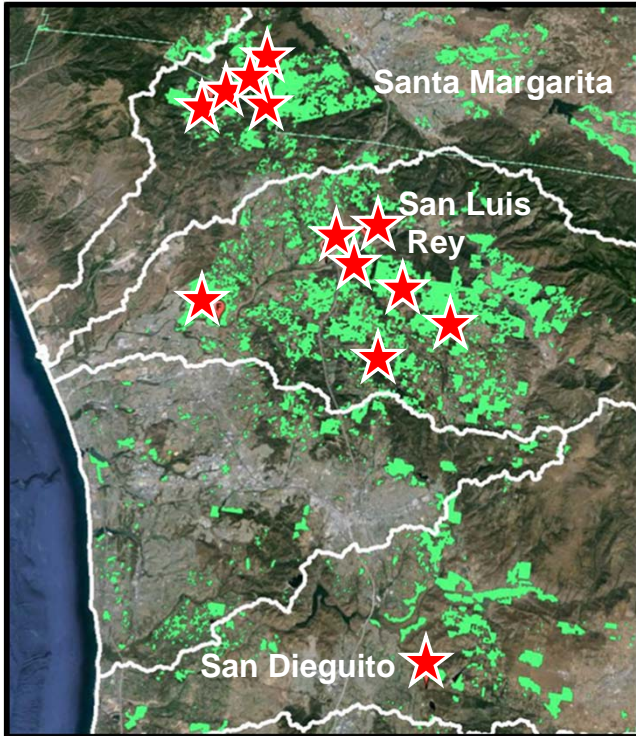
# SURFACE WATER AND GROUNDWATER MONITORING PROGRAM

## *REGIONAL MONITORING – THIRD-PARTY GROUP*

- Every five years, once in wet season, once in dry season
- Bioassessment monitoring
- Physical habitat
- Nutrients
- General chemistry

# SURFACE WATER AND GROUNDWATER MONITORING PROGRAM

## REGIONAL MONITORING – THIRD-PARTY GROUP



- Southern California Storm Water Monitoring Coalition (SMC)
- Identified 13 SMC sites

# WATER QUALITY RESTORATION PLAN

General WDRs for Discharges from Commercial Agricultural Operations for Dischargers that are Members of a Third-Party Group

Order No. R9-2016-0004

**Table B-10 Rationale for Water Quality Benchmarks**

<b>WATER QUALITY BENCHMARK</b> <i>(Based on Water Quality Objectives in the Basin Plan and other Applicable Statewide Water Quality Control Plans and Policies)</i>	<b>WATERBODY BENEFICIAL USES</b>
<b>Hydrogen Ion Concentration (pH)</b>	
<i>Narrative Objectives:</i>	
Changes in normal ambient pH levels shall not exceed 0.2 pH units. (Basin Plan)	Surface Water MAR, EST, SAL
Changes in normal ambient pH levels shall not exceed 0.5 pH units. (Basin Plan)	Surface Water COLD, WARM
The pH shall not be changed at any time more than 0.2 units which occur naturally (Ocean Plan)	Ocean Waters
<i>Numeric Objectives:</i>	
The pH shall not be depressed below 7.0 nor raised above 9.0. (Basin Plan)	Bays and Estuaries
The pH shall not be depressed below 6.5 nor raised above 8.5. (Basin Plan)	All Surface Waters
<b>Temperature</b>	
<i>Narrative Objectives:</i>	
The natural receiving water temperature of intrastate waters shall not be altered unless it can be demonstrated to the satisfaction of the Regional Board that such alteration in temperature does not adversely affect beneficial uses. (Basin Plan)	Surface Waters
At no time or place shall the temperature of be increased more than 5°F above the natural receiving water temperature. (Basin Plan)	Surface Waters COLD
<b>Dissolved Oxygen</b>	
<i>Numeric Objectives:</i>	
The dissolved oxygen concentration shall not at any time be less than 5.0 mg/L. The annual mean dissolved oxygen concentration shall not be less than 7 mg/L more than 10% of the time. (Basin Plan)	Inland Surface Waters and Bays and Estuaries MAR, WARM
<i>Narrative Objectives:</i>	
The dissolved oxygen concentration shall not at any time be depressed more than 10 percent from that which occurs naturally, as the result of the discharge of oxygen demanding waste materials (Ocean Plan)	Ocean Waters
<b>Turbidity</b>	
<i>Narrative Objectives:</i>	
Waters shall be free of changes in turbidity that cause nuisance or adversely affect beneficial uses. (Basin Plan)	Surface Waters
Within San Diego Bay, the transparency of bay waters, insofar as it may be influenced by any controllable factor, either directly or through induced conditions, shall not be less than 8 feet in more than 20 percent of the readings in any zone, as measured by a standard Secchi disk. Wherever the water is less than 10 feet deep, the Secchi disk reading shall not be less than 80 percent of the depth in more than 20 percent of the readings in any zone. (Basin Plan)	San Diego Bay
The transparency of waters in lagoons and estuaries shall not be less than 50% of the depth at locations where measurement is made by means of a standard Secchi disk, except where lesser transparency is caused by rainfall runoff from undisturbed natural areas and dredging projects conducted in conformance with waste discharge requirements of the Regional Board. With these two	Lagoons and Estuaries

- Required when:
  - Surface water monitoring benchmark is exceeded 3 out of 4 monitoring events
  - Groundwater result in excess of nitrate MCL (45 mg/l)
  - When directed by the San Diego Water Board
- Includes:
  - Source identification
  - Actions to be taken
  - Monitoring activities

# REOPENER PROVISION

- TMDL alternatives
- New TMDLs
- TMDL amendments

## IT BEGINS WITH ENROLLMENT!

- Spread the word
- Help us find outreach opportunities
- Refer complaints

# HOW TO KEEP UP TO DATE

## San Diego Regional Water Quality Control Board (9) - Email List Subscription Form

 Become a member of one or more of our email lists, and receive periodic announcements and updates by email.


1. Provide your email address and name, below.
2. Select one or more email list(s) and check the box next to your selection(s).
3. Click on the "subscribe" button located at the upper right hand corner.
4. An email notice will be sent to you for each selection. Please respond to each message(s) to confirm your membership.

Email Address:   
*(required)*

Subscribe

Your Full Name:   
*(required)* *(e.g. John Smith)*

### Special Topics

- Board Meetings
- 401 Certification Program
- Agriculture and Nurseries 
- Basin Planning Issues
- BF Goodrich Aerostructures
- Biological Objectives for the San Diego Region
- Anahard General NPDES Permit



- Agriculture
- Basin Plan
- Drought - Wasting Water
- Enforcement
- Environmental Projects
- Executive Officer's Reports
- Monitoring and Assessment
- Permit, Waivers, Forms
- Practical Vision
- Public Hearing Notice
- Sanitary Sewer Overflows
- Storm Water
- Tijuana River Valley Recovery Strategy
- TMDLs
- 401 Certifications
- More ...

 Emergency Water Conservation Regulations Portal


### ANNOUNCEMENTS

- [Tentative Addendum No. 1 to CAO R9-2013-0122 for James V. Pike & Prairie Avenue Gospel Center, Inc. \(11/30/2016 updated: 12/09/2016\)](#)
- [Final Report on Plastic Debris in San Diego Bay \(12/08/2016\)](#)
- [Notices of Proposed No Further Action \(11/29/2016\)](#)
- [New "2016 Community Outreach Strategy" \(11/09/2016\)](#)
- [Resolution Endorsing "2016 Community Outreach Strategy", Resolution No. R9-2016-0200 \(11/09/2016\)](#)
- [More Announcements...](#)





# Discussion



For additional information please contact:  
Barry.Pulver@waterboards.ca.gov  
(619) 521-3381