

More Insects

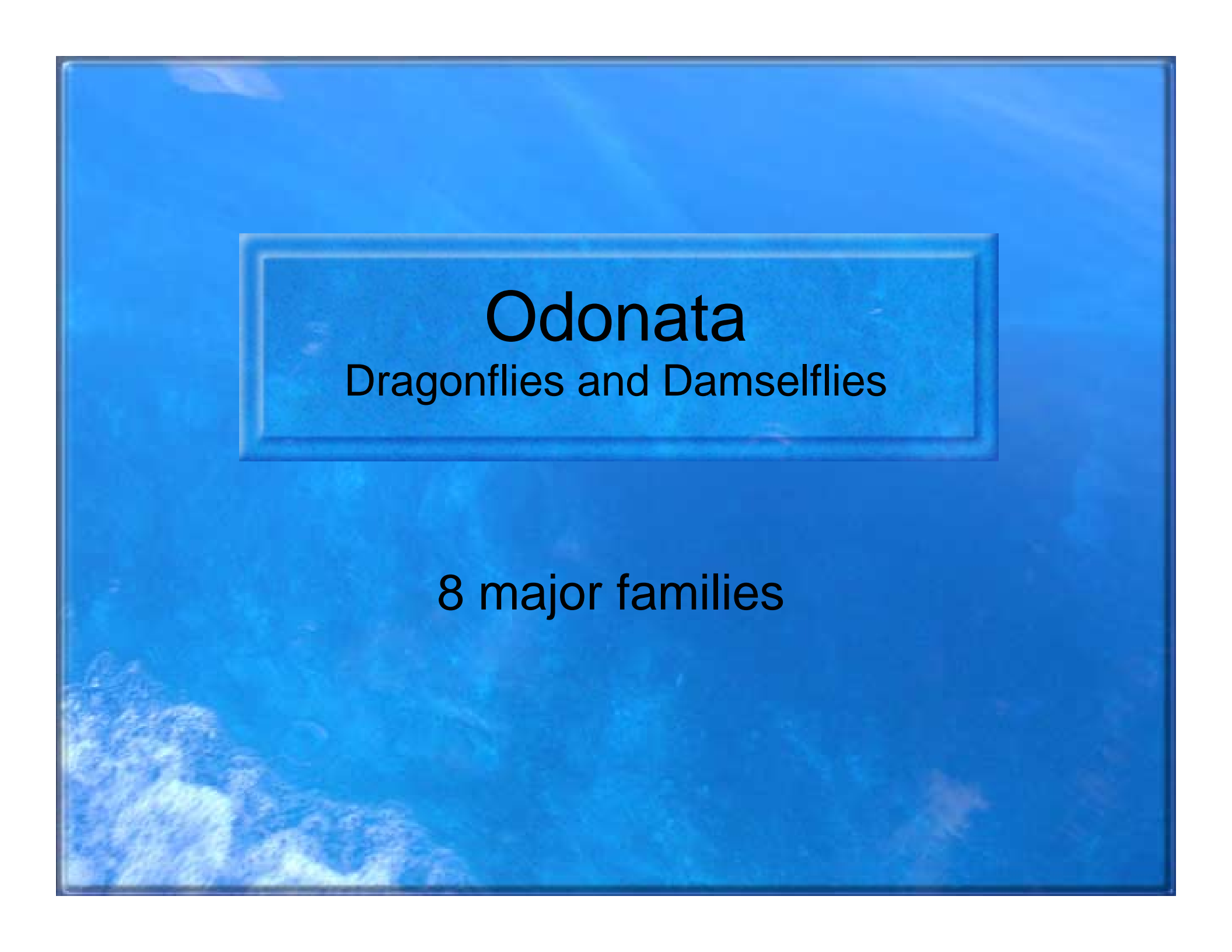
Diptera

Coleoptera

Odonata

Megaloptera

Hemiptera



Odonata

Dragonflies and Damselflies

8 major families

Coenagrionidae



- CTV = 5-9
- FFG = P

Aeshnidae



CTV = 5-8

- FFG = P

Cordulegasteridae

Cordulegasteridae
Cordulegaster sp.
deep toothed dentations

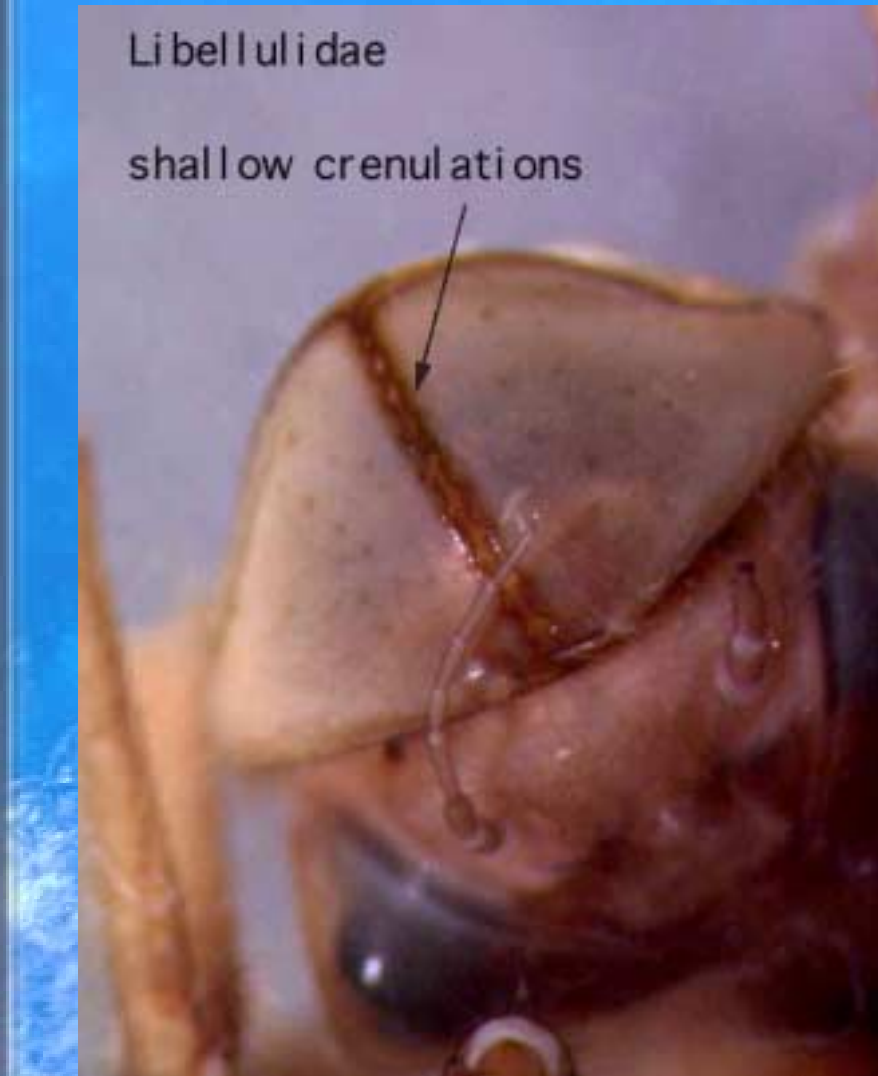


- CTV = 3
- FFG = P

Libellulidae

Libellulidae

shallow crenulations



- CTV = 9
- FFG = P

Gomphiidae

Gomphiidae

4 antennal segments



- CTV = 4
- FFG = P



Heteroptera

(Hemiptera)
True Bugs

4 major families

Belostomatidae



- CTV = 8
- FFG = p

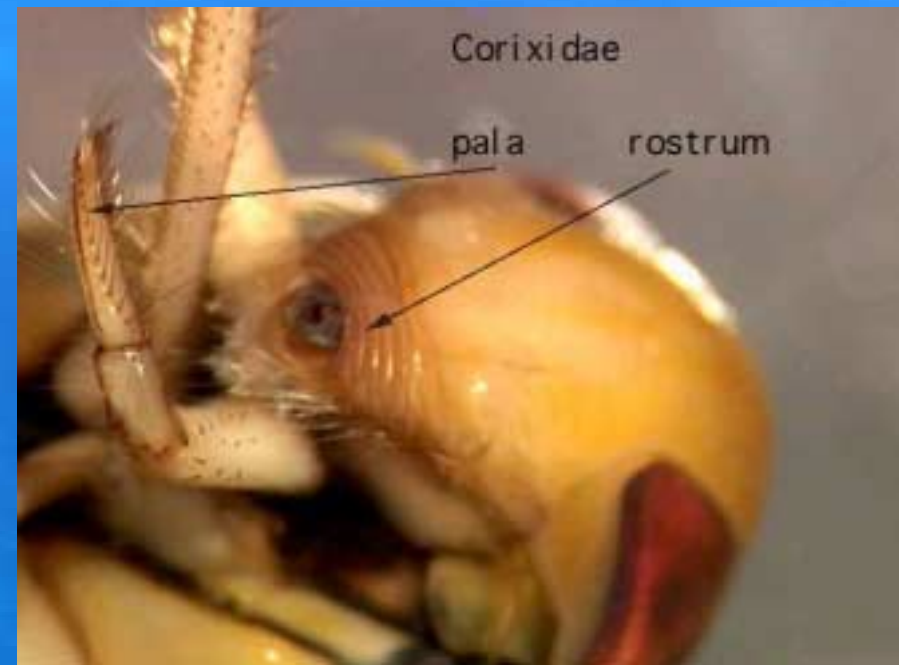
Naucoridae

Naucoridae



- CTV = 5
- FFG = P

Corixidae



- CTV = 8
- FFG = P



Diptera True Flies

24 major families!
A Whole Lot Of Midges!

Chironomidae



- CTV = 0 - 10
- FFG CG/OM/CF/PA/P
- 3000 species

Simuliidae



- CTV = 3-6
- FFG = CF



- *Simulium sp.*

Blephariceridae



- CTV = 0
- FFG = SC

Tabanidae



Photo Source: James Castner, U of Florida Entomology Dept.

- CTV = 5-8
- FFG = P

Tipulidae



- CTV = 1-3
- FFG = SH/P/CG

Coleoptera Beetles

7 major families

Dryopidae



- CTV = 5
- FFG = SH

Elmidae



- Very small!
- CTV = 2-6
- FFG = CG/SH

Amphizoidae



Adult of *Amphizoa davidi* Lucas (female)
Photo by Weiping Xie

- CTV = 1
- FFG = P

Dytiscidae

Adult = *Dytiscidae*

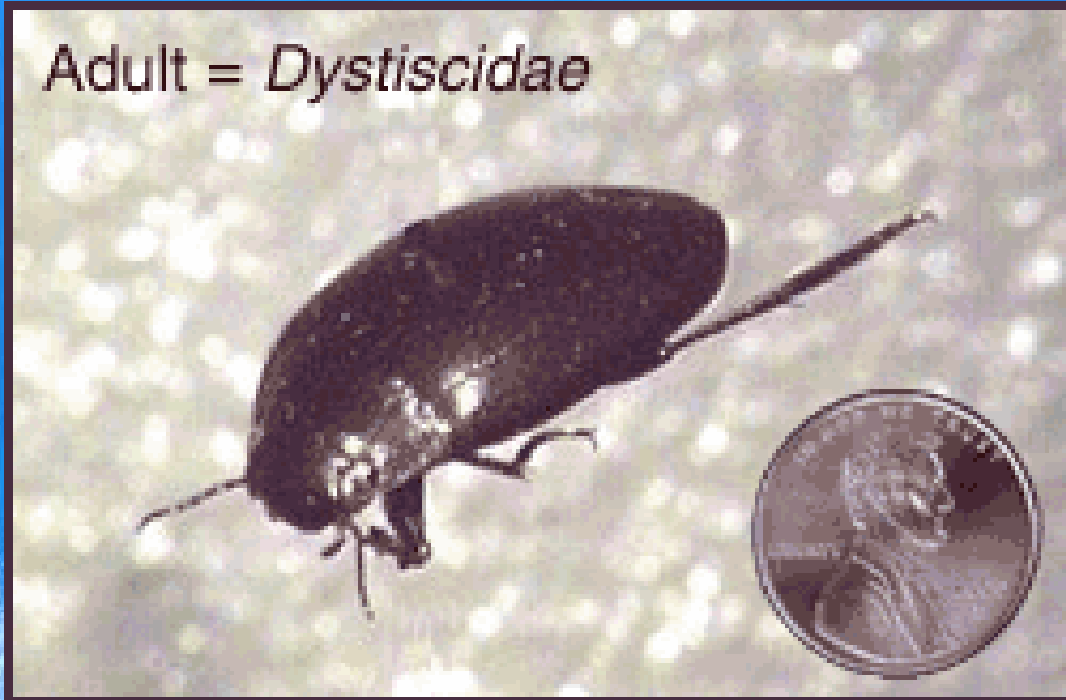


Photo Source: College of Natural Resources, U of CA - Berkeley



- CTV = 5-8
- FFG = P

Hydrophilidae




- CTV = 5
- FFG = P

Psephenidae



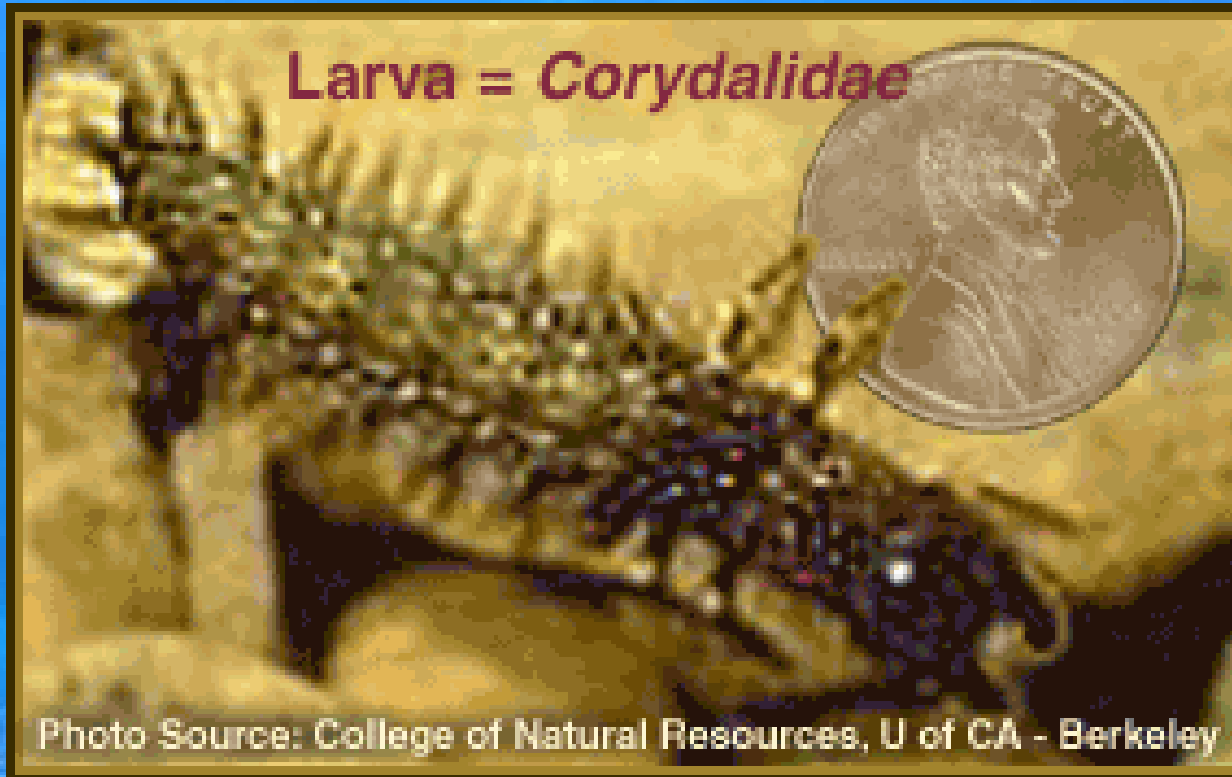
- CTV = 4
- FFG = SC



Megaloptera Dobsonflies

2 families

Corydalidae



- CTV = 0
- FFP = P



- *Neohermes californica*

Sialidae



- CTV = 4
- FFG = P