

An underwater photograph of a blue ocean with some rocky terrain at the bottom. A white rectangular box with a blue border is centered in the upper half of the image, containing the title text.

A Complete Field Guide to the Aquatic Macroinvertebrates

Dave Gibson
April 25, 2003

Major Groups

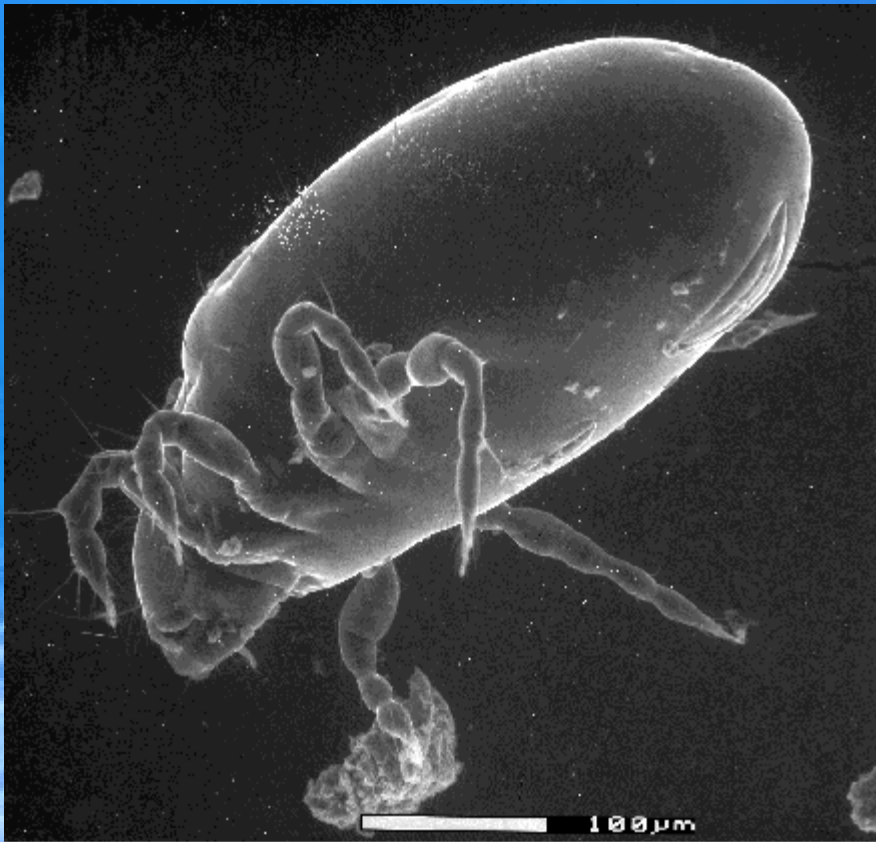
- Non-Insects

- Mites
- Crustaceans
- Molluscs
- Worms
- Flatworms

- Insects

- Mayflies
- Stoneflies
- Caddisflies
- Dragonflies
- Beetles
- Bugs
- Flies

Acari - Mites



- CTV = 5-8
- FFG = P

Amphipoda - Scuds



- CTV = 6-8
- FFG = CG

Decapoda - Crayfish



- CTV = 8
- FFG= SH/CG

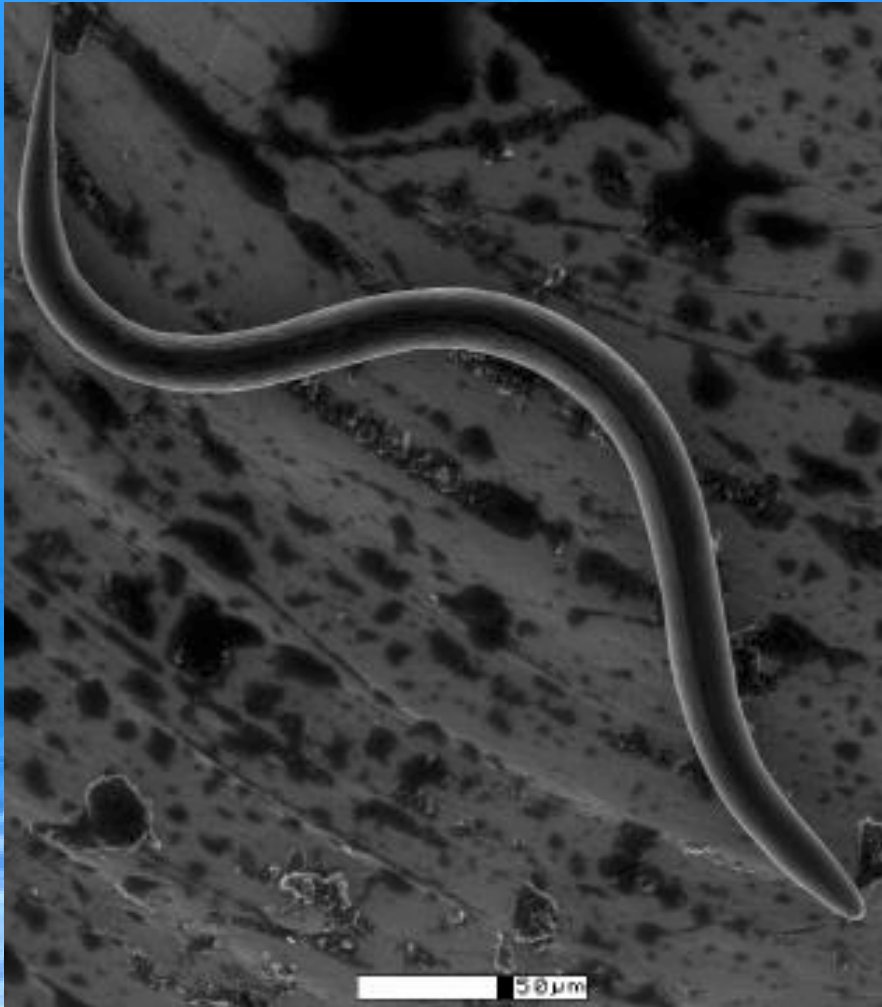
Isopoda - Sowbugs

Isopoda



- CTV = 8
- FFG = CG

Nematoda - Round Worms

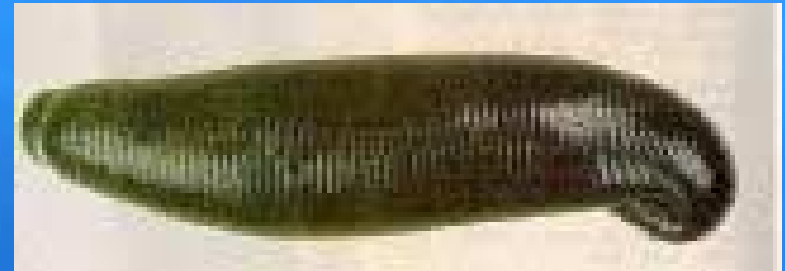


Nematoda



- CTV = 5
- FFG = CG

Oligochaeta - Worms



- CTV = 5-8
- FFG = CG/PA

Mollusca - Bivalves



- CTV = 10
- FFG = CF

Mollusca - Gastropoda

Gastropoda
Snail



- CTV = 5-8
- FFG = SC

Turbellaria - Flatworms



- CTV = 1-4
- FFG = P/OM

Insects!

- Majority of taxa in samples in healthy streams
- 8 Major Orders
- High degree of discriminatory power



Ephemeroptera Mayflies

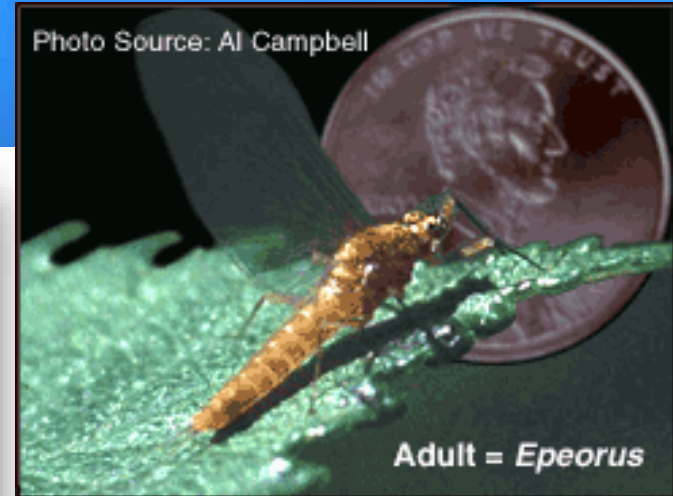
7 major families
EPT Taxa

Baetidae



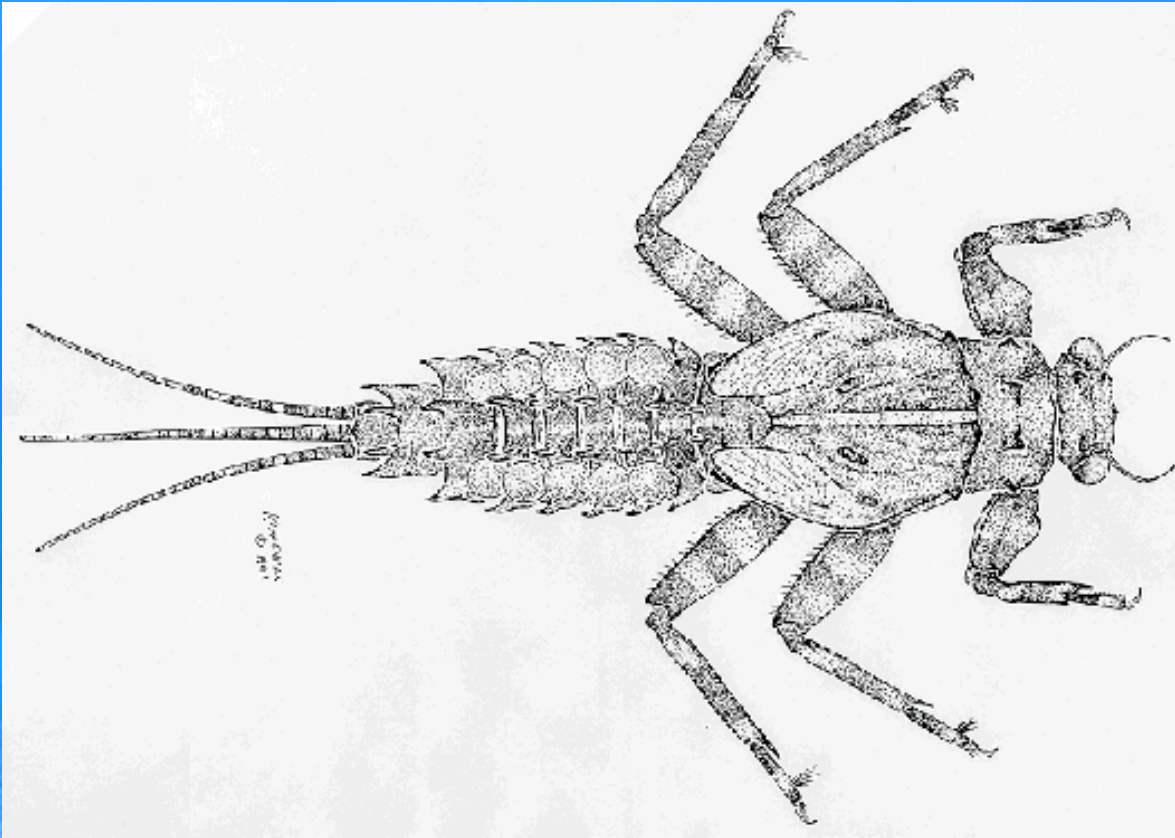
- CTV = 4-5
- FFG = CG

Heptageniidae



- CTV = 0-4
- FFG = SC

EphemereUidae



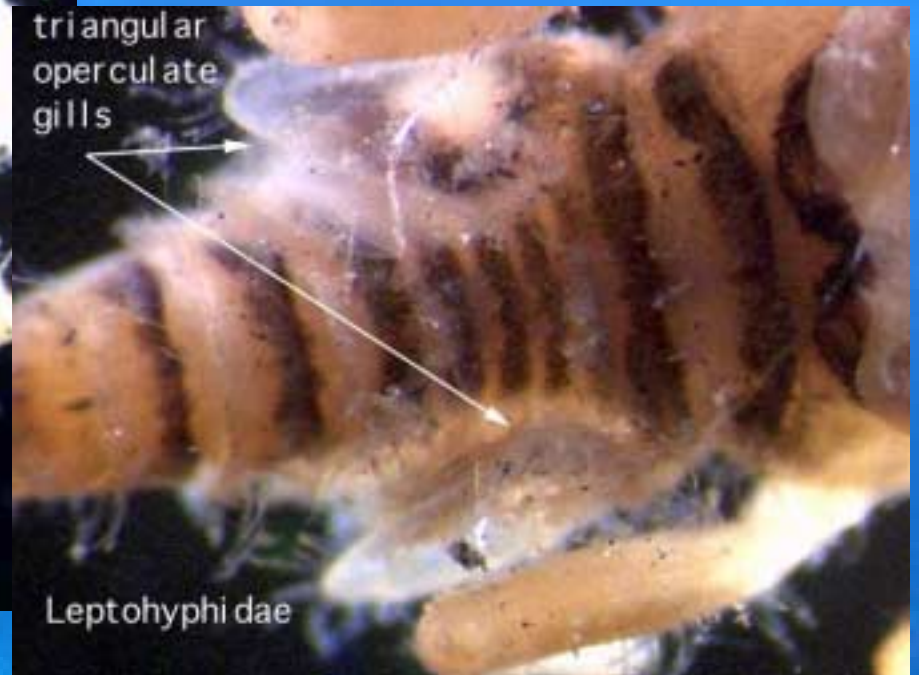
- CTV = 0-2
- FFG = CG/P

Siphonuridae



- CTV = 7
- FFG = CG

Leptohyphidae



- CTV = 4
- FFG = CG

Leptophlebiidae



- CTV = 2-4
- FFG = CG

Leptophlebiidae





Plecoptera Stoneflies

7 major families
EPT Taxa

Capniidae



Capnia sextuberculata male



- CTV = 1
- FFG = SH

Chloroperlidae

Sweltsa coloradensis, nymph



- CTV = 0-1
- FFG = P

Chloroperlidae

Sweltsa coloradensis



Nemouridae

Malenka sp., nymph



- CTV = 1-2
- FFG = SH

Taeniopterygidae



Taeniopterygidae

Taenionema pallidum, adult



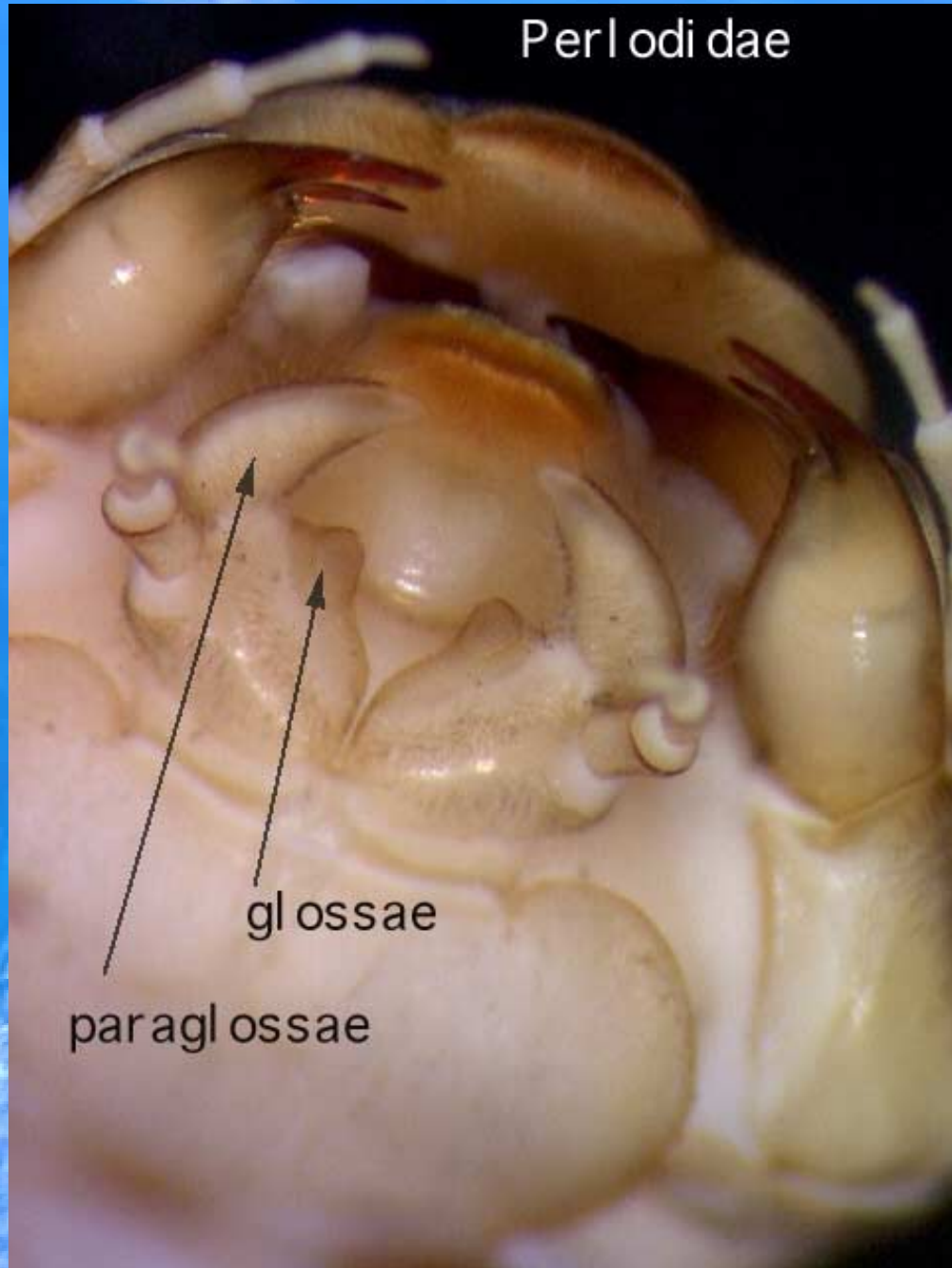
- CTV = 2
- FFG = OM/SH

Perlodidae



- CTV = 2
- FFG = P

Perlodidae



glossae

paraglossae

Perlodidae

Perlidae



- CTV = 1-3
- FFG = P

Perlidae



- *Classenia* sp.

Pteronarycidae



- CTV = 0-1
- FFG = OM



Trichoptera Caddisflies

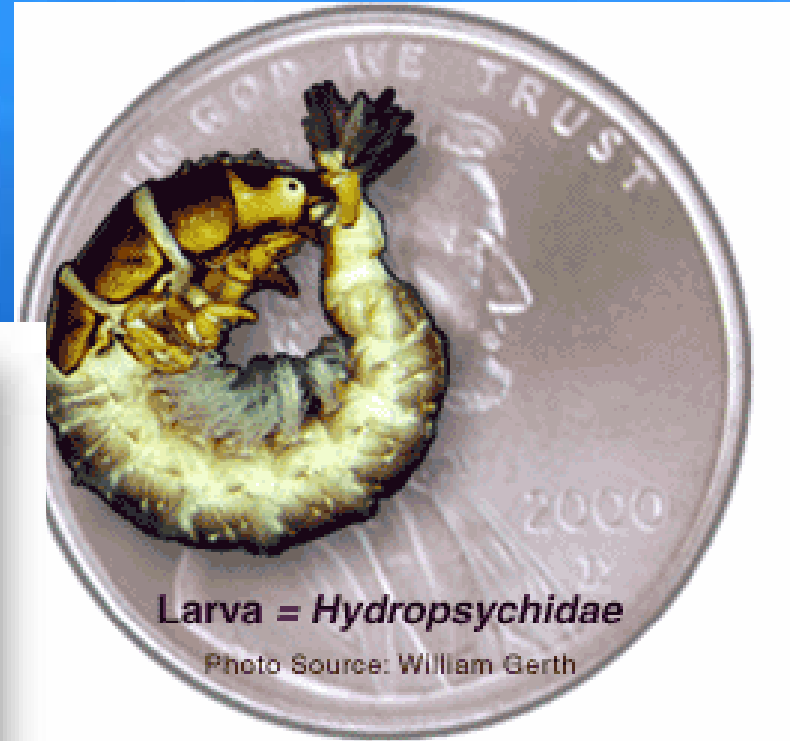
14 major families
EPT Taxa

Rhyacophilidae



- CTV = 0
- FFG = P

Hydropsychidae



Larva = *Hydropsychidae*

Photo Source: William Gerth

- CTV = 0-5
- FFG = CF/P



- *Hydropsyche sp.*

Helicopsychidae

Helicopsychidae
- Helicopsyche sp.



Figure 3 - Lateral view of *Helicopsyche* sp. larvae (Helicopsychidae)

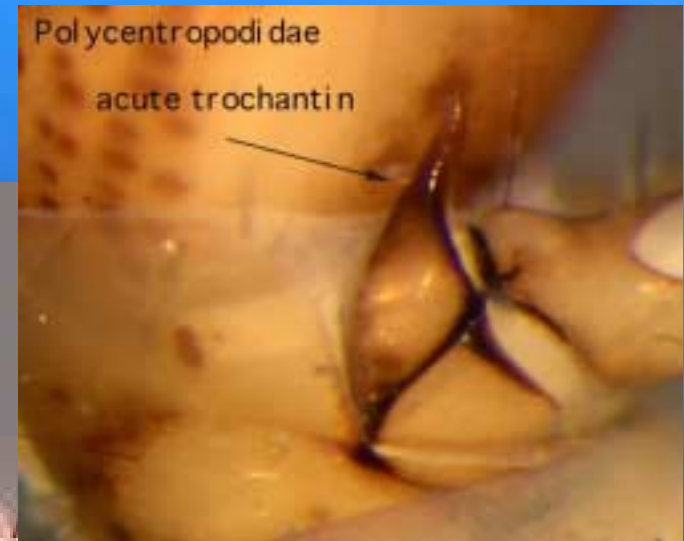
- CTV = 3
- FFG = SC

Philopotamidae



- CTV = 2-4
- FFG = CF

Polycentropodidae



- CTV = 6
- FFG = P

Glossosomatidae

Glossosomatidae



- CTV = 0-2
- FFG = SC

Hydroptilidae



Hydroptilidae



- CTV = 4-8
- FFG = PH/SC

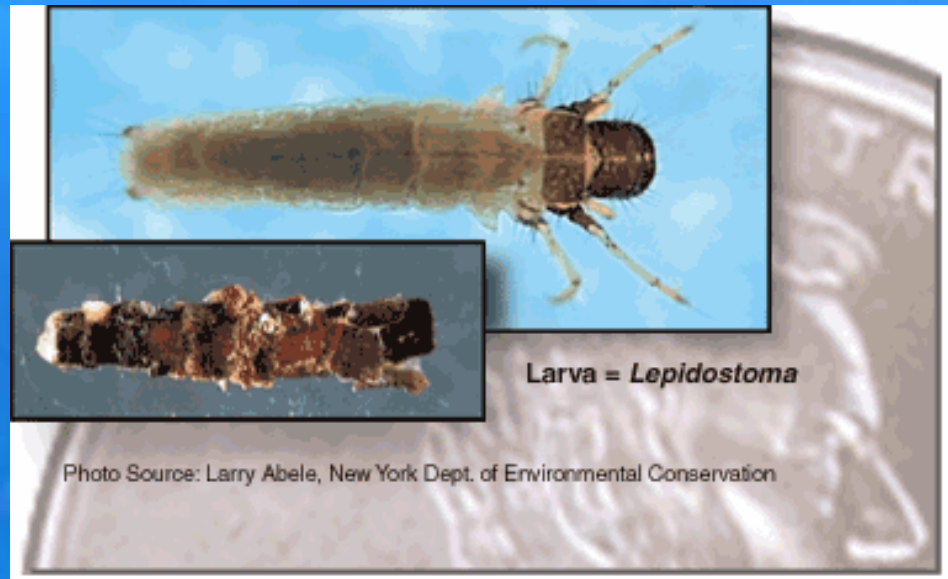
Brachycentridae

Brachycentridae



- CTV = 1-3
- FFG = OM

Lepidostomatidae



- CTV = 1
- FFG = SH

Leptoceridae



- CTV = 3-8
- FFG = OM/SH/P

Limnephilidae



- CTV = 0-4
- FFG = SH/OM

Psychomyiidae



- CTV = 2
- FFG = SC/CG



- *Discosmoecoes sp.*