

California Regional Water Quality Control Board, San Diego Region

February 7, 2014

Mr. Thomas Duffy
County of San Diego
Department of Public Works
5510 Overland Avenue
Suite 410
San Diego, CA 92123

In reply refer to:
758509:mporter

Subject: Amendment No. 1 to Clean Water Act Section 401 Water Quality Certification No. 10C-099 for the San Vicente Road Drainage Improvement Project

Mr. Duffy:

Enclosed find Amendment No. 1, Clean Water Act Section 401 Water Quality Certification No. 10C-099 (Amendment) issued by the California Regional Water Quality Control Board, San Diego Region (San Diego Water Board) in response to an amendment request submitted by the County of San Diego for the San Vicente Road Drainage Improvement Project (Project). The Certification Amendment shows changes in redline/strikeout format to indicate added and removed language. Water Quality Certification No. 10C-099 has also been enclosed for your reference.

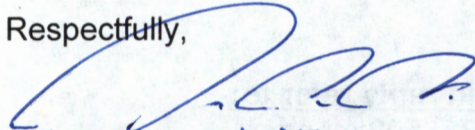
On September 27, 2011, the original Certification was issued to the County of San Diego for the Project. By letter dated August 23, 2013, the County of San Diego requested the mitigation site be changed from the Mount Olympus site to the Summit Drive Mitigation site.

Failure to comply with this Certification Amendment may subject County of San Diego to enforcement actions by the San Diego Water Board including administrative enforcement orders requiring County of San Diego to cease and desist from violations or to clean up waste and abate existing or threatened conditions of pollution or nuisance; administrative civil liability in amounts of up to \$10,000 per day per violation; referral to the State Attorney General for injunctive relief; and, referral to the District Attorney for criminal prosecution.

Any petition for reconsideration of this Certification Amendment must be filed with the State Water Resources Control Board within 30 days of certification action pursuant to section 3867 of Title 23 of the California Code of Regulations (23 CCR). If no petition is received, it will be assumed that County of San Diego has accepted and will comply with all terms and conditions of the Certification Amendment.

In the subject line of any response, please include reference number 758509:mporter. For questions or comments, please contact Mike Porter by phone at 619-521-3967, or by email at mike.porter@waterboards.ca.gov.

Respectfully,


for *James G. Smith, AEO*
DAVID W. GIBSON
Executive Officer

Enclosure:

Amendment No. 1 to Clean Water Act Section 401 Water Quality Certification No. 10C-099 and three supporting figures.

Clean Water Act Section 401 Water Quality Certification No. 10C-099 for San Vicente Road Drainage Improvement Project, with attachments.

DWG:jgs:db:kd:mp

cc:

Ms Peggy Bartels
U.S. Army Corps of Engineers
San Diego Field Office
Peggy.J.Bartels@spl01.usace.army.mil

Ms. Kelly Fisher
California Department of Fish and Game
South Coast Region
Habitat Conservation Planning – North
kfisher@dfw.ca.gov

Wetlands Regulatory Office
U.S. Environmental Protection Agency, Region 9
R9-WTR8-Mailbox@epa.gov

State Water Resources Control Board
Division of Water Quality
401 Water Quality Certification and Wetlands Unit
Stateboard401@waterboards.ca.gov

Tech Staff Info & Use	
File No.	10C-099
WDID	9 000002071
Reg. Measure	376570
ID Place ID	758509
Party ID	11763
Person ID	506420

**CALIFORNIA REGIONAL WATER QUALITY CONTROL BOARD
SAN DIEGO REGION**

2375 Northside Drive, Suite 100, San Diego, CA 92108
Phone (619) 516-1990 • Fax (619) 516-1994
<http://www.waterboards.ca.gov/sandiego/>

Clean Water Act Section 401 Water Quality Certification
and Waste Discharge Requirements
for Discharge of Dredged and/or Fill Materials

**Amendment No. 1 to Clean Water Act Section 401
Water Quality Certification No. 10C-099**

**PROJECT: San Vicente Road Drainage Improvement Project
Certification Number 10C-099
WDID: 9 00002071**

**APPLICANT: Mr. Thomas Duffy
County of San Diego
Department of Public Works
5510 Overland Avenue, Suite 410
San Diego, CA 92123**

Reg. Meas. ID: 376570
Place ID: 758509
Party ID: 11763
Person ID: 505420

The following changes have been made to Clean Water Act section 401 Water Quality Certification No. 10C-099, San Vicente Road Drainage Improvement Project. Changes below are shown in redline/strikeout format to indicate added and removed language.

- Page 2, PROJECT DESCRIPTION is replaced with the following:**
Mitigation for impacts will occur both on site, and off site, ~~at the County of San Diego's Mt. Olympus Open Space Preserve.~~ On-site mitigation will be the 0.013-acre (100-linear feet) re-establishment of (combined) Fresh water marsh and Southern willow scrub. ~~Off-site mitigation will be the 0.012-acre (35-linear feet) establishment, re-establishment, and rehabilitation (grading, weeding, and planting with native wetland and riparian plant species) of an unnamed stream, it's floodplain and associated wetlands at the County of San Diego's Mt. Olympus Open Space Preserve in the San Luis Rey Watershed.~~ Off-site mitigation will be the 0.008-acre (18-linear feet) establishment and rehabilitation (grading, weeding, and planting with native wetland and riparian plant species) of an unnamed stream, it's floodplain and associated wetlands at the County of San Diego's Summit Drive Mitigation Site property in the San Dieguito Watershed.
- Page 8, IV. ADDITIONAL CONDITIONS COMPENSATORY MITIGATION B.2 has been modified as follows:**
~~Off-site mitigation must be the 0.012-acre (35-linear feet) establishment, re-establishment, and rehabilitation (grading, weeding, and planting with native wetland and riparian plant species) of an unnamed stream, it's floodplain and associated wetlands at the County of San Diego's Mt. Olympus Open Space Preserve in the San Luis Rey Watershed.~~ Off-site

mitigation will be the 0.008-acre (18-linear feet) establishment and rehabilitation (grading, weeding, and planting with native wetland and riparian plant species) of an unnamed stream, it's floodplain and associated wetlands at the County of San Diego's Summit Drive Mitigation Site property in the San Dieguito Watershed.

	Impacts (acres)	Impacts (linear ft.)	Mitigation for Impacts (acres)	Mitigation Ratio (area mitigated :area impacted)	Mitigation for Impacts (linear ft.)	Mitigation Ratio (linear feet mitigated :linear feet impacted)
Permanent Impacts						
Streambed/ Wetland	0.004	50	On-Site ¹ 0.013 Re- establishment Off-site ² 0.008 Establishment and Restoration	On-Site 3.25:1 Off-site 2:1	On-Site 100 Re- establishment Off-Site 18 Establishment and Restoration	On-Site 2:1 Off-site 1:2.8
Temporary Impacts⁴						
Streambed/ Wetland	0.007	80	.007	1:1	80	1:1

1. Freshwater marsh and Southern willow scrub.
2. Grading, weeding and planting with native wetland and riparian plant species in an unnamed stream, its flood plain, and associated wetlands.

3. Page 20, ATTACHMENT 1, PROJECT INFORMATION has been modified as follows:
~~Off-site mitigation must be the 0.012-acre (35-linear feet) establishment, re-establishment, and rehabilitation (grading, weeding, and planting) of the unnamed stream, it's floodplain and associated wetlands at the County of San Diego's Mt. Olympus Open Space Preserve in the San Luis Rey Watershed. Off-site mitigation will be the 0.008-acre (18-linear feet)~~
establishment and rehabilitation (grading, weeding, and planting with native wetland and riparian plant species) of an unnamed stream, it's floodplain and associated wetlands at the County of San Diego's Summit Drive Mitigation Site property in the San Dieguito Watershed.

I, David W. Gibson, Executive Officer, do hereby certify the forgoing is a full, true, and correct copy of Amendment No.1 to Certification No. 10C-099 issued on February 7, 2014.

James G. Smith, AED
[Signature]
for David W. Gibson
Executive Officer
Regional Water Quality Control Board

7 Feb 2014
Date



 Project Location

RECON
 M:\06946653\commen_ga\fig1.mxd 8/3/2012

FIGURE 1
 Regional Location

Map Source: USGS 7.5 minute topographic map series, DEL MAR & LA JOLLA quadrangles, T145M13W



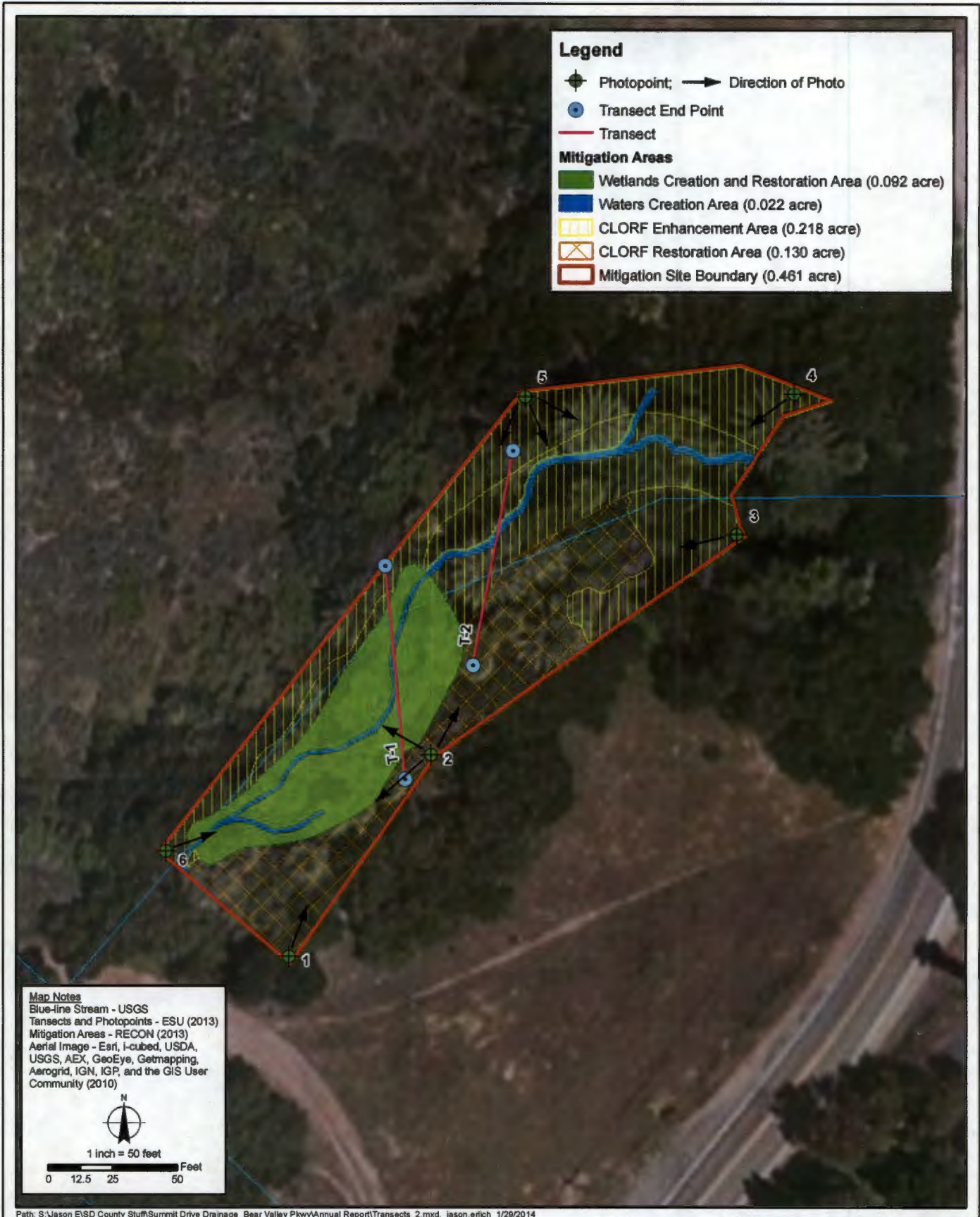
 Project Boundary

RECON

MAJ08040802\recon_m_gtdg2.mxd

8/3/2012

FIGURE 2
Project Location on USGS Map



**Transect and Photopoint Locations
 Summit Drive Mitigation Project
 Year 1 Annual Report**

**FIGURE
 4**

