

Appendix F

AGENDA
Roripaugh Ranch
Modifications to Santa Gertrudis Creek and Long Valley Creek Channels
Meeting at Army Corps of Engineers
September 20, 2005, 1:30 p.m.

1. Project Status
2. On-Site Channels/Bridges – Permit Modifications
 - a. Impacts (Attachment A)
 - i. Plans
 - ii. Table
 - b. Mitigation Plan
 - i. Changes to Mitigation Plan (Attachment B)
 1. Plans
 2. Table
 - ii. On-Site Mitigation
 - iii. Off-Site Mitigation
 - iv. Armor Flex Slope Re-vegetation (Attachment C)
3. Off-Site Channel/Bridges – New Permits
 - a. Impacts (Attachment D)
 - i. Plans
 - ii. Table
 - b. Mitigation Plan
4. WQMP
5. Current Permit Needs
6. Permit Application Status
 - a. Army Corps of Engineers
 - b. San Diego Regional Water Quality Control Board
 - c. U.S. Fish and Wildlife Service
 - d. California Department of Fish and Game
 - e. Riverside County Flood Control & Water Conservation District
 - f. City of Temecula
7. EIR Addendum Status
 - a. AEIR #1
 - b. AEIR #2
8. Other

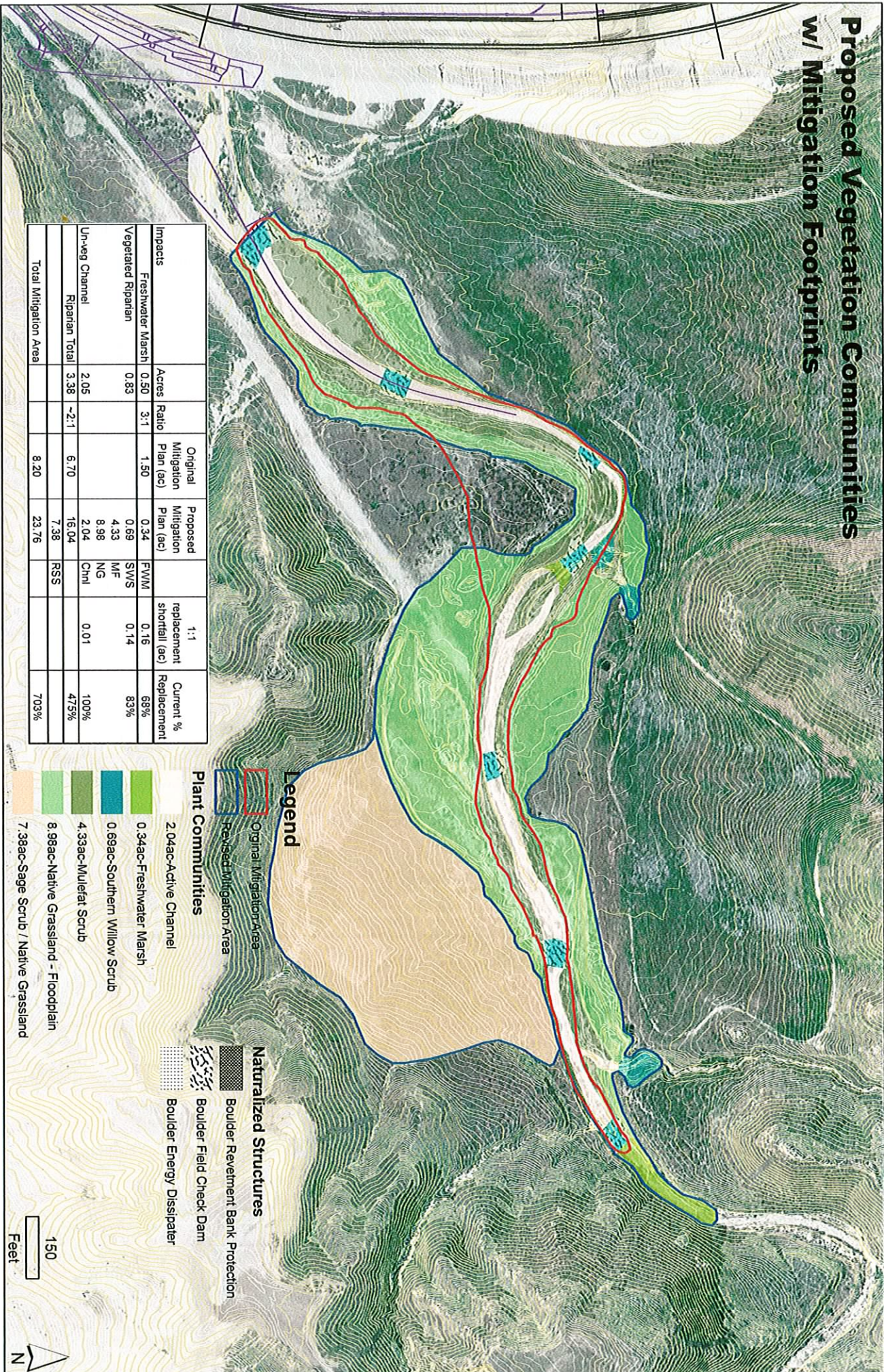
Attachment A
On-Site Channels/Bridges – Permit Modifications

Roripaugh Ranch Modification Impacts

<u>Project Component</u>	<u>Original Impact (sq. ft.)</u>
Santa Gertrudis Creek - Armor Flex north of South Loop Road	34,800.00
Santa Gertrudis Creek - Concrete Bridge between South Loop Road and Butterfield Stage Road	0.00
Long Valley Wash Channel @ North Loop Road	<u>0.00</u>
TOTAL	34,800.00

Attachment B
Mitigation Plan – Permit Modifications

Proposed Vegetation Communities w/ Mitigation Footprints



Impacts	Acres	Ratio	Original Mitigation Plan (ac)	Proposed Mitigation Plan (ac)	1:1 replacement shortfall (ac)	Current % Replacement
Freshwater Marsh	0.50	3:1	1.50	0.34	0.16	68%
Vegetated Riparian	0.83			4.33	0.14	83%
Un-veg Channel	2.05			8.98	0.01	100%
Riparian Total	3.38	~2:1	6.70	16.04		475%
Total Mitigation Area			8.20	23.76		703%

Legend

- Original Mitigation Area
- Revised Mitigation Area

Plant Communities

- 2.04ac-Active Channel
- 0.34ac-Freshwater Marsh
- 0.69ac-Southern Willow Scrub
- 4.33ac-Mulefat Scrub
- 8.98ac-Native Grassland - Floodplain
- 7.38ac-Sage Scrub / Native Grassland

Naturalized Structures

- Boulder Revetment Bank Protection
- Boulder Field Check Dam
- Boulder Energy Dissipater



Attachment C
Armor Flex Slope Re-vegetation









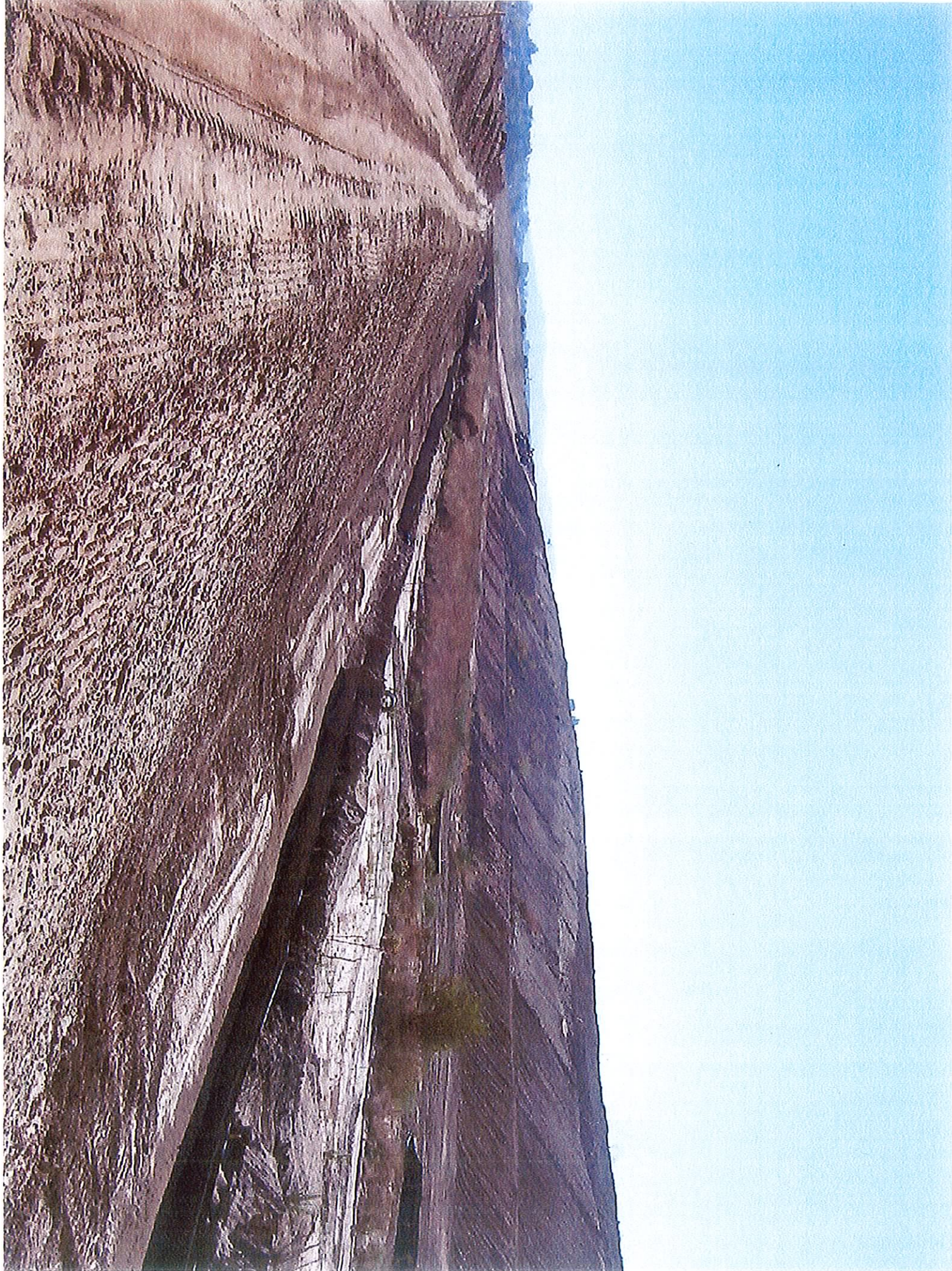


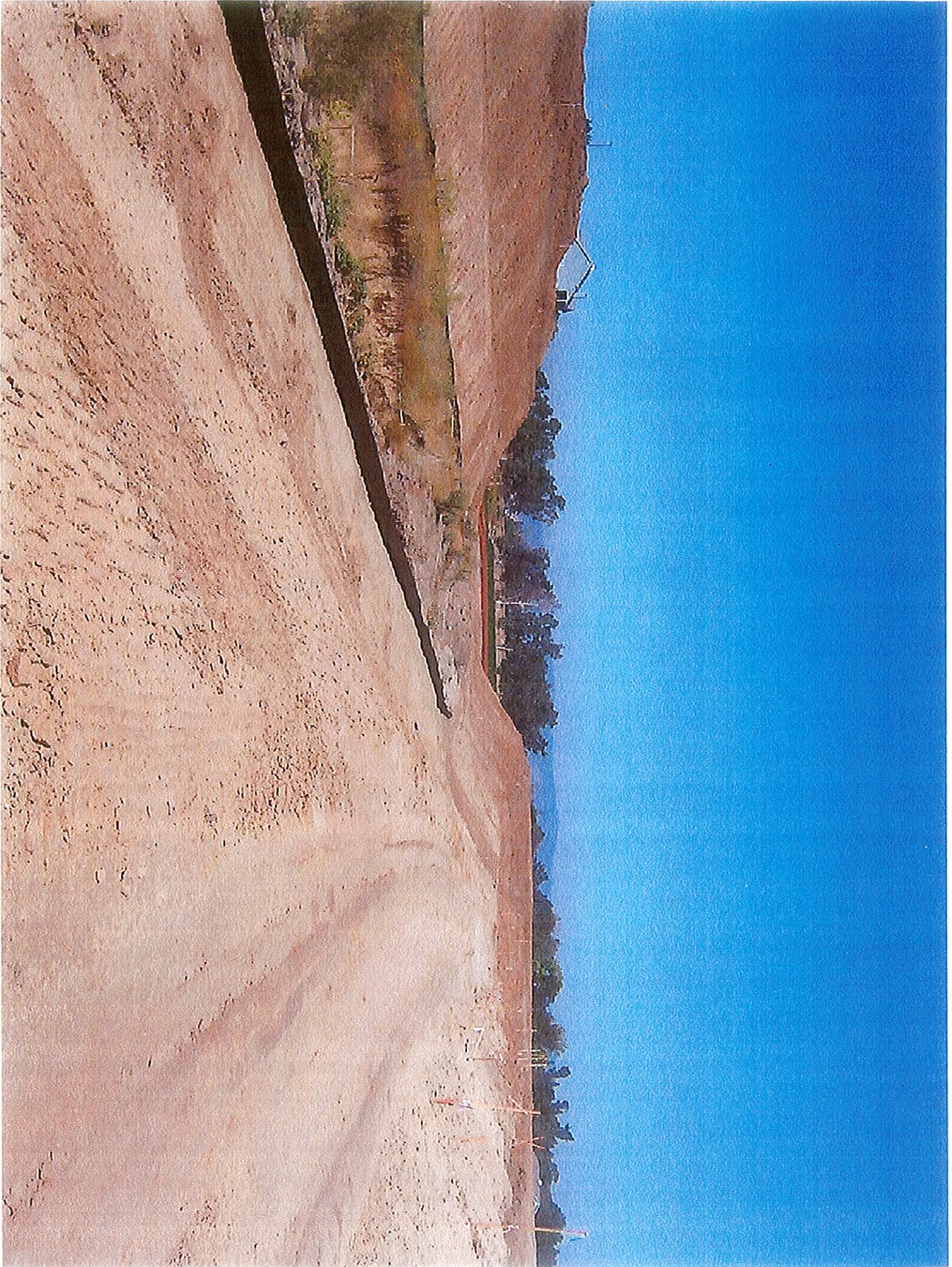












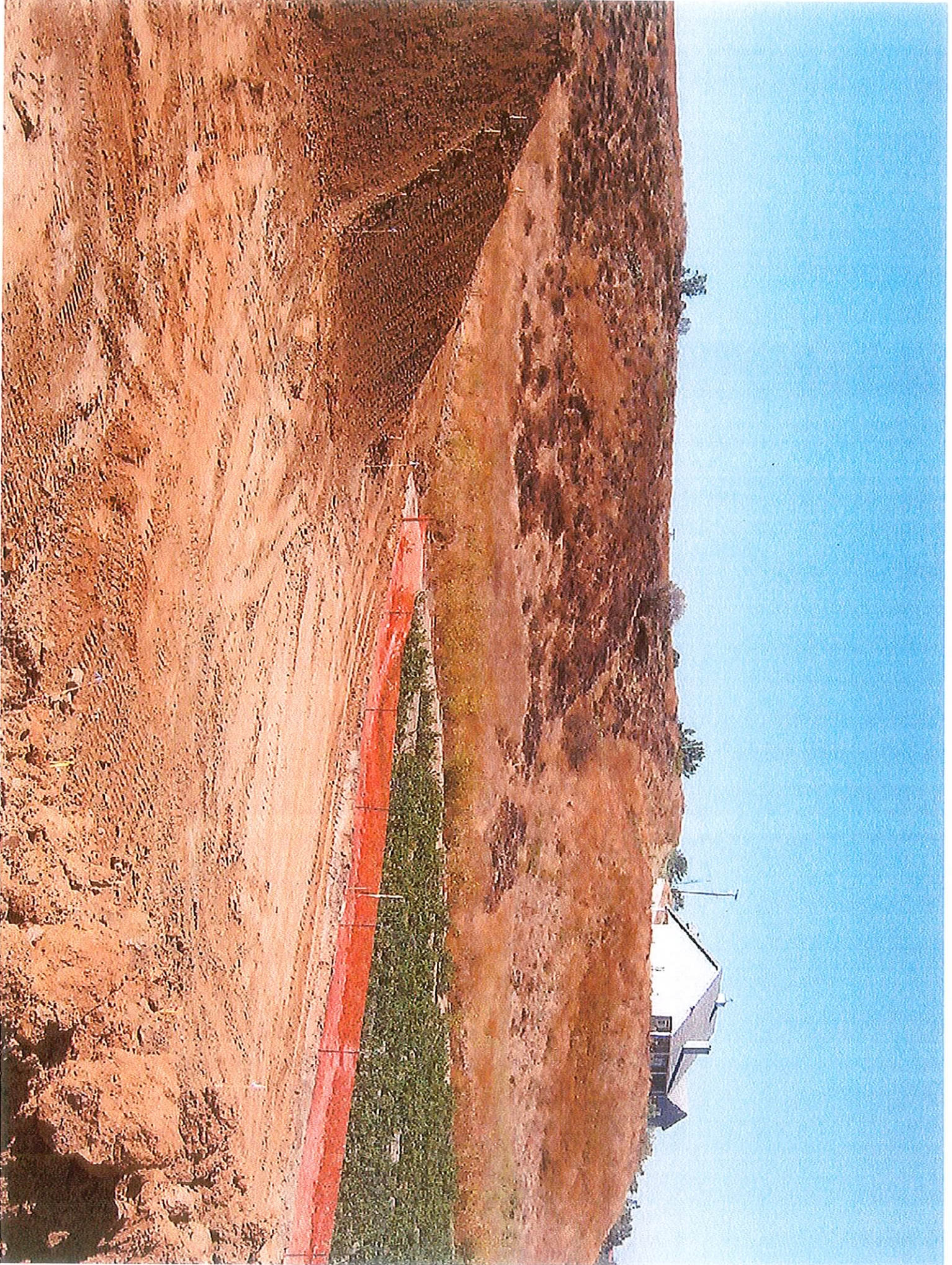






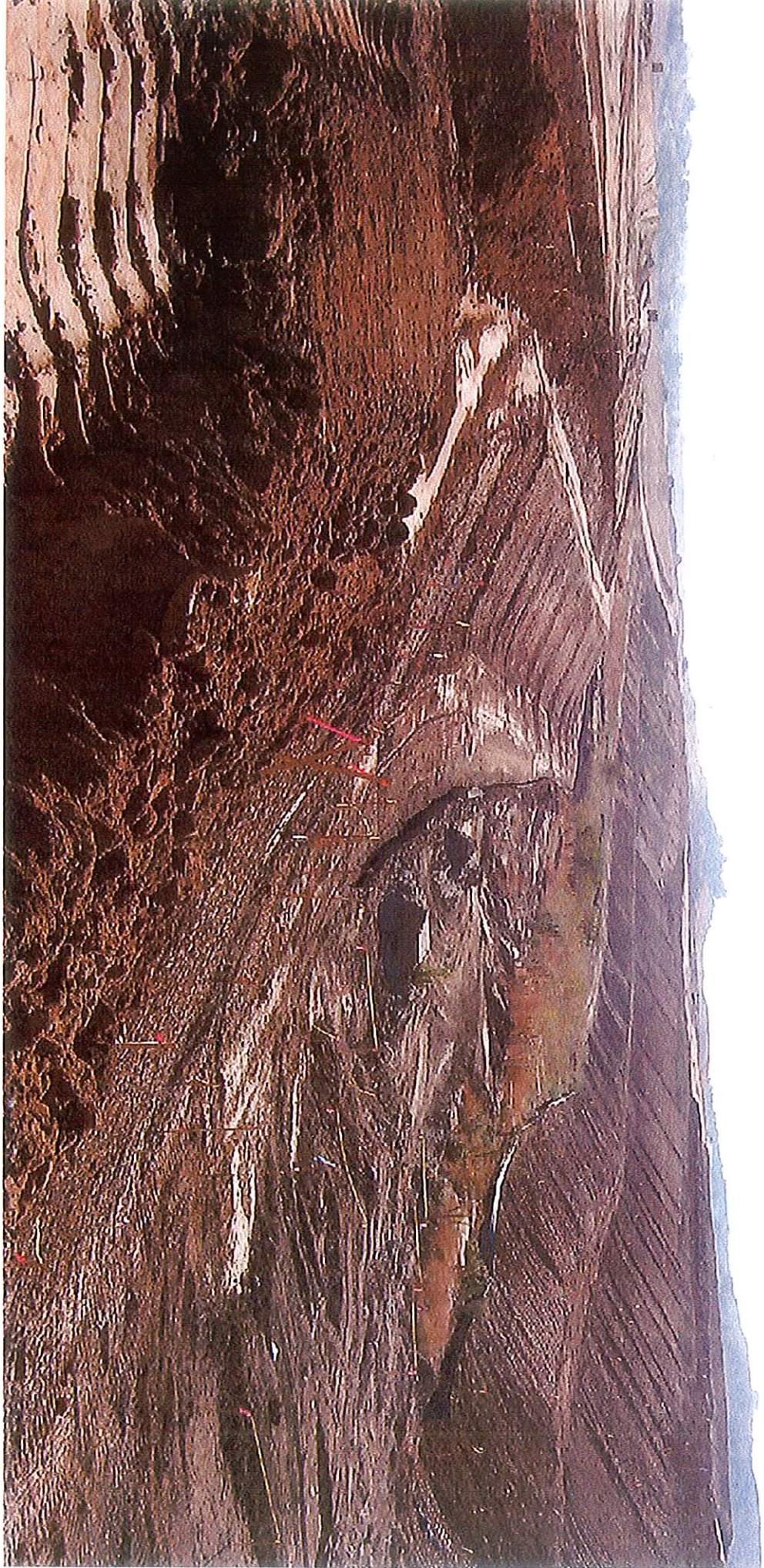












Attachment D
Off Site Channel/Bridges – New Permits

Kempnangh Ranch Meeting - 1:30 9-20-2005

Butterfield Stage Rd thru Kempnangh may not have been approved through HCP

Can span arch between bridges - crossing @ Butterfield + N. Loop Rd.

What kind of maintenance will Flood require

Centers for Natural Land Mgmt managed reserve

Not enough water in mitigation area

Proposing check dams to slow back-up flows & restore channel from incision

What habitat would graded area affect

Mark's going to answer questions about mit plan

- hydrology?

- species issues?

800 feet of concrete