



EDMUND G. BROWN JR.
GOVERNOR

MATTHEW RODRIGUEZ
SECRETARY FOR
ENVIRONMENTAL PROTECTION

Central Valley Regional Water Quality Control Board

11 October 2018

Toni Raymus
Oleander LP
P.O. Box 2188
Manteca, CA 95337

CERTIFIED MAIL
91 7199 9991 7039 3145

NOTICE OF APPLICABILITY

**WATER QUALITY ORDER 2003-0003-DWQ
STATEWIDE WASTE DISCHARGE REQUIREMENTS FOR DISCHARGES TO LAND WITH
A LOW THREAT TO WATER QUALITY
OLEANDER LP,
OLEANDER ESTATES UNIT NO. 4 DEWATERING PROJECT
SAN JOAQUIN COUNTY**

On 27 September 2018, MCR Engineering on behalf of Oleander LP submitted a Notice of Intent (NOI) to obtain coverage under Water Quality Order 2003-0003-DWQ, *Statewide General Waste Discharge Requirements for Discharges to Land with a Low Threat to Water Quality* (hereafter General Order), for construction dewatering at the above-referenced site. The submittal contains all the information required to evaluate applicability of the General Order; therefore, the NOI is considered complete. Based on the information provided in the NOI, the discharge meets the conditions of the General Order. The discharge is hereby covered under State Water Resources Control Board General Order 2003-0003-DWQ-0191. Please include this number on all correspondence related to this discharge.

PROJECT LOCATION

The Oleander Estates Unit No. 4 project is a residential subdivision project that will convert approximately 31 acres of agricultural land into a residential subdivision. The project is located in southern Manteca immediately east of Union Road, north of Peach Avenue, west of Oleander Estates Unit No. 4, and south of Woodward Estates in the southern portion of San Joaquin County.

The Water Quality Control Plan for the Sacramento River and San Joaquin River Basins, Fourth Edition, revised October 2011 (hereafter Basin Plan), designates beneficial uses, establishes water quality objectives, contains implementation plans and policies for protecting waters of the basin, and incorporates by reference plans and policies adopted by the State Water Resources Control Board. Pursuant to §13263(a) of the California Water Code (CWC), waste discharge requirements must implement the Basin Plan.

PROJECT DESCRIPTION

Initial site development is currently scheduled to begin in mid-October 2018 and will include construction of underground utilities, roadways, and single-family residential building pads. Dewatering is anticipated to occur during a 6 to 8 week period during the initial phase of the underground utilities scope of construction which will occur at major roadways and utility point of connections.

Excavation activities are expected to encounter groundwater at depths between 10 to 11.5 feet below ground surface. A series of extraction wells will be installed and pumped to maintain adequate drawdown during the installation of underground utilities. Dewatering is estimated to average 0.5 million gallons per day (mgd) and expected to decrease after initial drawdown. Percolation testing was conducted within the planned development in 2007. Percolation rates were tested to be approximately 10 gallons per square foot per day.

Extracted groundwater will be discharged into on-site temporary percolation basin where the water will not be treated or neutralized. The temporary percolation basin will be located across portions of future development areas. The temporary percolation basin area consists of 14 acres and will store approximately 3 mgd. In the event the temporary basin is not sufficient for the dewatering project, another nearby area consisting of 4 acres has been designated for overflow.

The temporary dewatering basins will be monitored daily. If the percolation basin approaches the designed storage capacity, the Discharger will provide additional temporary water containment until the water can be utilized as part of the planned construction activities and to prevent over flow. If additional temporary water containment cannot be achieved, the discharge will cease until such capacity is available.

FACILITY-SPECIFIC REQUIREMENTS

The General Order and this Notice of Applicability regulates the discharge of construction dewatering generated at the Oleander Estates Unit No. 4 project.

1. Water generated during construction dewatering shall be disposed of as described in the Notice of Intent and in accordance with the requirements contained in the General Order.
2. Construction dewatering discharge at a location or in a manner different from that described in the Notice of Intent or this Notice of Applicability is prohibited.
3. All technical reports required herein that involve evaluation, or other work requiring interpretation and proper application of engineering or geologic sciences, shall be prepared by or under the direction of persons registered to practice in California pursuant to California Business and Professions Code, section 6735, 7835, and 7835.1. As required by these laws, completed technical reports must bear the signature(s) and seal(s) of the registered professional(s) in a manner such that all work can be clearly attributed to the professional responsible for the work.
4. Analytical results shall be submitted on a semi-annual basis in accordance with the General Order's Monitoring and Reporting Program. Semi-annual reports shall be submitted to the Board by the **1st day of the second month after the reporting period** (i.e., the January–June semi-annual report is due by 1 August each year).

5. The Discharger shall submit the required annual fee (as specified in the annual billing issued by the State Water Resources Control Board) until the Notice of Applicability is officially terminated.
6. Failure to abide by the conditions of the General Order, including its monitoring and reporting requirements, and this letter authorizing applicability could result in enforcement actions, as authorized by provisions of the California Water Code.

DOCUMENT SUBMITTALS

All monitoring reports and other correspondence should be converted to searchable Portable Document Format (PDF) and submitted electronically. Documents that are less than 50 MB should be emailed to:

centralvalleysacramento@waterboards.ca.gov

To ensure that your submittal is routed to the appropriate staff person, the following information should be included in the body of the email or any documentation submitted to the mailing address for this office:

Facility Name: Oleander Estates Unit No. 4, San Joaquin County		
Program: Non-15 Compliance	Order: R5-2003-0003-DWQ-0191	CIWQS Place ID: 851441

Documents that are 50 MB or larger should be transferred to a CD, DVD, or flash drive and mailed to:

Central Valley Regional Water Quality Control Board
ECM Mailroom
11020 Sun Center Drive, Suite 200
Rancho Cordova, CA 95670

Now that the NOA has been issued, the Board's Compliance and Enforcement section will take over management of your case. Brendan Kenny is your new point of contact for any questions about the Order. In addition, all monitoring and technical reports should be submitted to him. The enclosed transmittal sheet shall be included with each monitoring report. If you find it necessary to make a change to your permitted operations, Brendan will direct you to the appropriate Permitting staff. You may contact Brendan at (916) 464-4635 or at bkenny@waterboards.ca.gov

--original signed by Andrew Altevogt for--

PATRICK PULUPA
Executive Officer

Enclosures: Water Quality Order No. 2003-0003-DWQ
Monitoring Report Submittal Transmittal Form

cc w/o encl: San Joaquin County Environmental Health Department, Stockton
Shawn Samaniego, MCR Engineering, Inc., Mantec

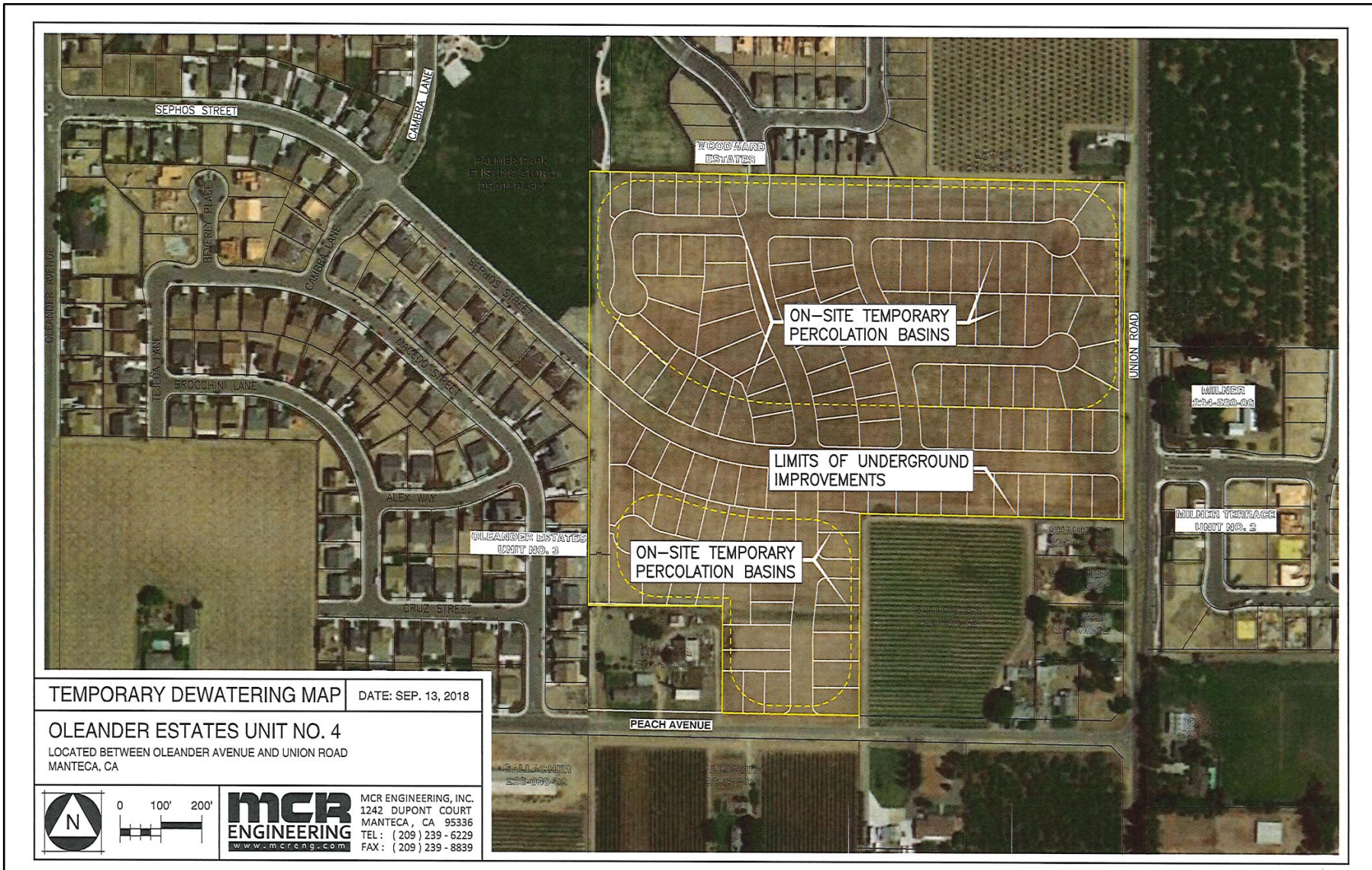
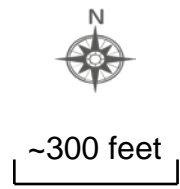


Figure Reference:
 Notice of Intent, submitted by MCR
 Engineering on behalf of Oleander LP



PROJECT LOCATION MAP
OLEANDER ESTATES NO. 4
CONSTRUCTION DEWATERING
SAN JOAQUIN COUNTY