
Central Valley Regional Water Quality Control Board

30 October 2017

Adam O'Connor
Pacific Gas & Electric Company
6111 Bollinger Canyon Road, 3130G
San Ramon, CA 94583

CERTIFIED MAIL
91 7199 9991 7035 8420 3392

NOTICE OF APPLICABILITY

**WATER QUALITY ORDER 2003-0003-DWQ
STATEWIDE WASTE DISCHARGE REQUIREMENTS FOR DISCHARGES TO LAND WITH
A LOW THREAT TO WATER QUALITY
PACIFIC GAS & ELECTRIC COMPANY
PIPELINE RETIREMENT PROJECT R-838; NON-TRADITIONAL IN-LINE INVESTIGATION
PROJECT I-433; AND STATION PROJECT S-494, MCDONALD ISLAND,
SAN JOAQUIN COUNTY**

On 13 October 2017, Pacific Gas & Electric Company (PG&E) submitted a Notice of Intent (NOI) to obtain coverage under Water Quality Order 2003-0003-DWQ, *Statewide General Waste Discharge Requirements for Discharges to Land with a Low Threat to Water Quality* (hereafter General Order) for three projects (R-838, I-433, and S-494) that will be sharing the same land application area (LAA). The submittals contain all the information required to evaluate applicability of the General Order; therefore, the NOI is considered complete. Based on the information provided in the NOI, the discharge meets the conditions of the General Order. The discharge is hereby covered under State Water Resources Control Board General Order 2003-0003-DWQ-0182. Please include this number on all correspondence related to this discharge.

PROJECT LOCATION

PG&E has three project sites located on McDonald Island in San Joaquin County, as shown on Attachment A. These three projects are included in one NOA because groundwater encountered during excavation at any of the three project locations will be discharged to one LAA. The LAA consists of approximately 33 acres of agricultural land owned by PG&E leased to Zuckerman-Heritage, Inc. (APN 129-080-09).

The Water Quality Control Plan for the Sacramento River and San Joaquin River Basins, Fourth Edition, revised October 2011 (hereafter Basin Plan), designates beneficial uses, establishes water quality objectives, contains implementation plans and policies for protecting waters of the basin, and incorporates by reference plans and policies adopted by the State Water Resources Control Board. Pursuant to §13263(a) of the California Water Code (CWC), waste discharge requirements must implement the Basin Plan.

PROJECT DESCRIPTION

The three PG&E projects are described below.

Retirement Project R-838. Project R-838 includes retiring approximately 4,000 feet of natural gas pipeline. The pipeline segment to be retired will be accessed by excavation holes at the western and eastern end of the alignment and at one intermediate location to isolate the pipeline for deactivation. The project is scheduled to begin mid-October 2017 and take approximately 1.5 to 2 months to complete.

In-Line Inspection Project I-433. The I-433 project includes excavations to expose the existing natural gas pipeline segment at two entry locations. An inspection of a 0.189-mile portion of the 16-inch line will be conducted. The project is scheduled to begin in February 2018 and take approximately 2 months to complete.

Station Project S-494. The S-494 station project includes excavation to remove and replace various parts of Line 8-57. The project is scheduled to begin in the next few weeks and will take approximately 2 months to complete.

Dewatering of the excavations will be performed using in-pit submersible pumps as needed. The water will be consolidated in fractional tanks staged within the temporary construction easements for each project and/or the two staging areas shown on Attachment A. The water will be transferred via water trailers or trucks to the tank/filtration staging area at the LAA. PG&E will be responsible for the filtering and applying the water via sprinklers and/or gated irrigation pipes with the LAA in accordance with best management practices.

PG&E conducted an environmental project assessment of excavation locations to evaluate the potential for groundwater and/or soil contamination. Based on Geotracker and Envirostor database searches, there are no sites of potential environmental concern within 1,000 feet of Project I-433. Portions of R-838 and S-494 are within soil and groundwater contaminated sites. R-838 is located near a total petroleum hydrocarbon as gasoline soil site that was closed by the Water Quality Control Board in 1996 with no further action. Portions of S-494 are near the PG&E McDonald Compressor Station, an open Cleanup Program site, where total petroleum hydrocarbons as diesel were reported in groundwater samples.

Prior to discharge, water samples will be collected from each project excavation or from consolidated water in tanks at the staging area and the results will be compared to Maximum Contaminant Levels (MCLs), the Basin Plan, and agricultural water quality goals. Extracted groundwater that does not meet these requirements will be trucked offsite for disposal at an approved disposal facility and will be not used for general irrigation. Based on the results of the water samples, water quality that meets the criteria for discharge will be discharged to agricultural land owned by PG&E and leased to Zuckerman-Heritage, Inc. (APN 129-080-09). The discharge will occur with permission from the lessee.

Over the course of construction for the three projects, an estimated total volume up to 1.5 million gallons may be discharged. Discharge water will be applied via sprinklers, gated irrigation, or in another manner requested by the lessee. Discharges will be monitored and controlled in accordance with the General Order and best management practices to prevent runoff, nuisance conditions, and erosion.

FACILITY-SPECIFIC REQUIREMENTS

The General Order and this Notice of Applicability regulates construction dewatering and reuse of the treated water for PG&E Projects R-838, I-433, and S-494.

1. Water generated during construction dewatering shall be disposed of as described in the Notice of Intent and in accordance with the requirements contained in the General Order.
2. Construction dewatering discharge at a location or in a manner different from that described in the Notice of Intent or this Notice of Applicability is prohibited.
3. All technical reports required herein that involve evaluation, or other work requiring interpretation and proper application of engineering or geologic sciences, shall be prepared by or under the direction of persons registered to practice in California pursuant to California Business and Professions Code, section 6735, 7835, and 7835.1. As required by these laws, completed technical reports must bear the signature(s) and seal(s) of the registered professional(s) in a manner such that all work can be clearly attributed to the professional responsible for the work.
4. Analytical results shall be submitted on a semi-annual basis in accordance with the requirements the General Order's Monitoring and Reporting Program and in PG&E's Discharge Monitoring Plan (Attachment B). For discharges occurring between January and June, the semi-annual monitoring report is due August 15, and for discharges occurring between July and December, the monitoring report is due February 15. The Discharger shall submit the required annual fee (as specified in the annual billing issued by the State Water Resources Control Board) until the Notice of Applicability is officially terminated.
5. Failure to abide by the conditions of the General Order, including its monitoring and reporting requirements, and this letter authorizing applicability could result in enforcement actions, as authorized by provisions of the California Water Code.

DOCUMENT SUBMITTALS

All monitoring reports and other correspondence should be converted to searchable Portable Document Format (PDF) and submitted electronically. Documents that are less than 50 MB should be emailed to:

centralvalleysacramento@waterboards.ca.gov.

To ensure that your submittal is routed to the appropriate staff person, the following information should be included in the body of the email or any documentation submitted to the mailing address for this office:

Facility Name: PG&E Projects R-838, I-433, and S-494, San Joaquin County		
Program: Non-15 Compliance	Order: R5-2003-0003-DWQ-0182	CIWQS Place ID: 835237

Documents that are 50 MB or larger should be transferred to a CD, DVD, or flash drive and mailed to:

Central Valley Regional Water Quality Control Board
ECM Mailroom
11020 Sun Center Drive, Suite 200
Rancho Cordova, CA 95670

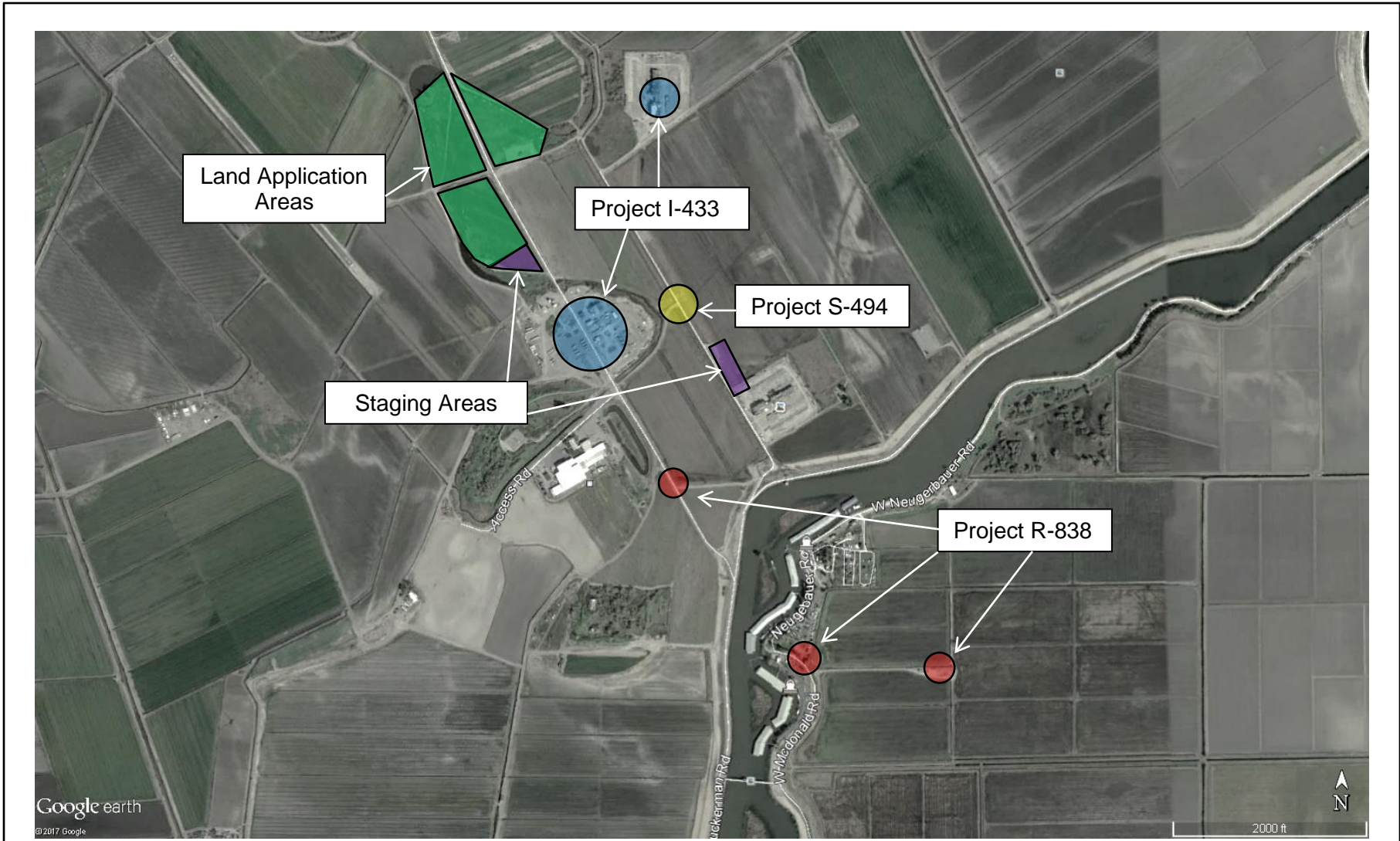
Now that the NOA has been issued, the Board's Compliance and Enforcement section will take over management of your case. Brendan Kenny is your new point of contact for any questions about the Order. In addition, all monitoring and technical reports should be submitted to him. The enclosed transmittal sheet shall be included with each monitoring report. If you find it necessary to make a change to your permitted operations, Brendan will direct you to the appropriate Permitting staff. You may contact Brendan at (916) 464-4635 or at bkenny@waterboards.ca.gov.

--original signed by Andrew Altevogt for Pamela Creedon--

PAMELA C. CREEDON
Executive Officer

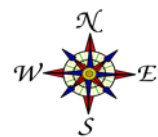
Enclosures: Water Quality Order No. 2003-0003-DWQ
Monitoring Report Submittal Transmittal Form

cc: Rodney Estrada, San Joaquin Environmental Health Department, Stockton



Google earth
©2017 Google

Note: Project locations, LAA, and staging areas are not to scale. The project locations include additional staging areas.



~2,000 feet

**PG&E PROJECTS
R-383, S-494, AND I-433**

SAN JOAQUIN COUNTY