

**2017 Los Angeles River Trash TMDL Annual Report
for the City of Lynwood**

Prepared for the Los Angeles Regional Water Quality Control Board
Submitted as part of the 2016-2017 Individual MS4 NPDES Annual Report

December 15, 2017

December 15, 2017

City of Lynwood Trash TMDL Annual Report

Table of Contents

| | |
|--|---|
| 1. Background | 2 |
| 2. Compliance Status | 2 |
| 3. Full Capture Systems, Partial Capture Systems, and Institutional Controls | 2 |
| 4. Daily Generation Rate (DGR) Study | 2 |
| 4.1 Study method | 3 |
| 4.2 Collection routes | 3 |
| 4.3 Field pictures | 7 |
| 5. Mass Balance Approach | 9 |
| 6. Trash TMDL Reporting Forms | 9 |

December 15, 2017

City of Lynwood Trash TMDL Annual Report

1. Background

The City of Lynwood (City) is complying with the Los Angeles River Trash TMDL (Trash TMDL) through an alternative compliance option, as allowed by the June 11, 2015, Los Angeles Regional Water Quality Control Board (Regional Board) Amendment to the Trash TMDL. The City is employing a combination of full capture systems, partial capture systems, and institutional controls—all properly sized, operated, and maintained—to achieve a reduction in trash discharge of 99% or greater from the baseline load. The percent reduction is determined through a mass balance approach, based on a daily generation rate (DGR) study as described in the Regional Board's August 9, 2007, Trash TMDL Staff Report for the Los Angeles River Watershed.

2. Compliance Status

The Regional Board's mass balance worksheets (Reporting Forms) were used to calculate the percent reduction in trash discharge for reporting year 2016-2017. They are discussed in Section 5 and included in Section 6 of this report.

The City will continue to properly maintain its trash capture devices and institutional controls and anticipates loading reductions above 99% in future reportings years. The City requests the Executive Officer's concurrence to reduce the frequency of DGR studies from annually to once every five years. The City will report annually on the continued implementation at the same level of capture devices and institutional controls and any drastic land use changes that occur.

3. Full Capture Systems, Partial Capture Systems, and Institutional Controls

A complete list of trash capture devices is included in Section 6. Institutional controls include littering ordinances, annual catch basin cleaning, weekly street sweeping, public education and stormwater pollution prevention outreach, residential curbside recycling, hazardous and electronic waste roundups, and bulky item collection.

4. Daily Generation Rate (DGR) Study

The City's trash discharge for the reporting year was estimated using a mass balance approach based on a trash DGR calculated for land use areas within the City. The representative land use areas studied were commercial, high and low density residential, industrial, public facilities, and open space. The DGR was calculated by weighing trash collected over a 30-day period in the summer along representative street sweeping collection routes within the study areas, then extrapolating that weight across the City. See Figures 1-6 for the designated routes. The results of the DGR study are included as part of the Regional Board Reporting Forms in Section 6.

December 15, 2017

City of Lynwood Trash TMDL Annual Report

4.1 Study method

Trash¹ was manually picked up with a reaching tool along the collection routes. (See Figure 7.) The manual pickup was conducted one day prior to street sweeping for each route. Catch basins along the study routes were covered to prevent trash from being swept into them. (See Figure 8.) Only trash a quarter of an inch or larger was collected. Collected trash in each area was weighed using a calibrated digital scale. (See Figure 9.) Five gallon buckets were used to estimate the volume. The trash was then separated and quantified by material type. A standard health and safety plan was followed at all times. The health and safety plan is available upon request.

4.2 Collection routes

Figures 1-6 show the collection routes for the DGR Study. Each figure includes a brief description.



Figure 1. High Density Residential Area Route. Collection occurred Wednesday. Route includes the side of the street swept Thursday only.

¹ Following the Los Angeles River Trash TMDL, "trash" is defined in California Government Code Section 68055.1(g) as "...all improperly discarded waste material, including, but not limited to, convenience food, beverage, and other product packages or containers constructed of steel, aluminum, glass, paper, plastic, and other natural and synthetic materials, thrown or deposited on the lands and waters of the state, but not including the properly discarded waste of the primary processing of agriculture, mining, logging, sawmilling or manufacturing."



Figure 2. Low Density Residential Area Route. Collection occurred Wednesday. Route includes the side of the street swept Thursday only.



Figure 3. Commercial Area Route. Collection occurred Tuesday. Route includes the side of the street swept Wednesday only.



Figure 4. Industrial Area Route. Collection occurred Monday. Route includes the side of the street swept Tuesday only.



Figure 5. Public/Educational Area Route. Collection occurred on Wednesday. Route includes the side of the street swept Thursday only.

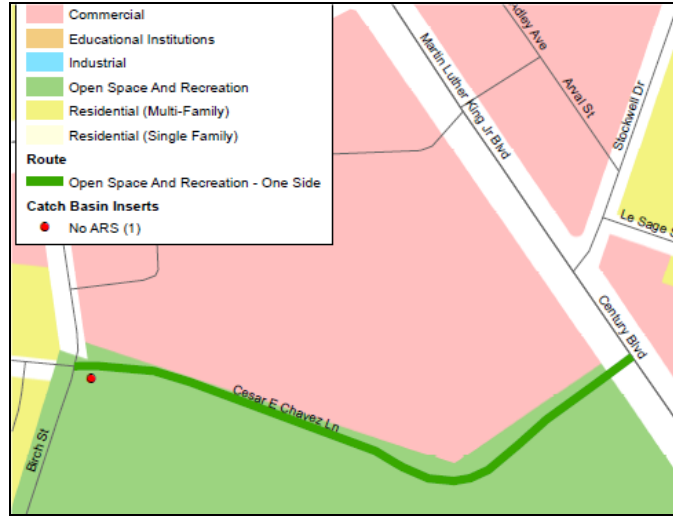


Figure 6. Open Space/Recreational Area Route. Collection occurred on Tuesday. Route includes only the side of the street swept Wednesday.

December 15, 2017

4.3 Field pictures

Figures 7-10 were taken during the 2017 DGR study. Each picture includes a brief description.



Figure 7. DGR crew member collecting trash using a reaching tool.



Figure 8. Catch basins along the study routes were covered to prevent trash from being swept into them.



Figure 9. DGR crew member weighing collected trash using a digital scale.

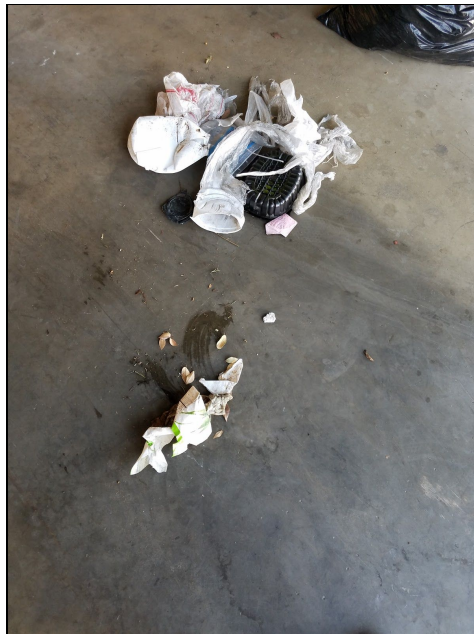


Figure 10. Sorted trash pile from the Industrial Area route on 8-28-17.

December 15, 2017

City of Lynwood Trash TMDL Annual Report

5. Mass Balance Approach

The mass balance Reporting Forms provided by the Regional Board were used to calculate total trash discharge. (See Section 6.) Deviations from the Reporting Forms are noted and explained in the comments sections. This includes the following:

- The City's streets are not swept in one day. Approximately equal parts are swept Monday through Friday. Accounting for this effect results in fractional days of trash accumulation for a given storm event.

6. Trash TMDL Reporting Forms

The 2017 Trash TMDL Reporting Forms are included on the following pages.

| Trash Collection for Calculation of Daily Generation Rate, DGR | | | | | | | | | | |
|--|--|---|------------------------------|----------------------|-----------------------------|---|---|--|--|---|
| Col. 1 | Col. 2 | Col. 3 | Col. 4 | Col. 5 | Col. 6 | Col. 7 | Col. 8 | Col. 9 | Col. 10 | Col. 11 |
| Land Use Category | Total Area within Jurisdiction | Representative Area for DGR Calculation | Date of Last Street Sweeping | Date of DGR Sampling | Length of Collection Period | Trash Collection from Representative Area (lb. or gal.) | Trash Cleaned Out from Catchbasin(s) within the Representative Area (lb. or gal.) | Total Amount of Trash Generated in Representative area | Total Trash Generated within Representative Area | Comments |
| Low Density | 95.72 | 0.18 | | | | | | | | |
| | | | 8/17/17 | 8/23/17 | 6 | 0.50 | 0 | 0.50 | | Low Density Residential areas swept weekly. DGR sampling collected weekly (Wednesday) by hand, and prior to street sweeping activities (Thursdays). Thus a six-day period elapsed between sweeping and collection events. |
| | | | 8/24/17 | 8/30/17 | 6 | 0.81 | 0 | 0.81 | | |
| | | | 8/31/17 | 9/6/17 | 6 | 0.25 | 0 | 0.25 | | |
| | | | 9/7/17 | 9/13/17 | 6 | 0.19 | 0 | 0.19 | | |
| | | | 9/14/17 | 9/20/17 | 6 | 0.19 | 0 | 0.19 | 35.22 | |
| | | | Total Days: | | 30 | | | | | |
| High Density | 36.55 | 0.19 | | | | | | | | |
| | | | 8/16/17 | 8/22/17 | 6 | 1.19 | 0 | 1.19 | | High Density Residential areas swept weekly. DGR sampling collected weekly (Tuesdays) by hand, and prior to street sweeping activities (Wednesdays). Thus a six-day period elapsed between sweeping and collection events. |
| | | | 8/23/17 | 8/29/17 | 6 | 1.50 | 0 | 1.50 | | |
| | | | 8/30/17 | 9/5/17 | 6 | 2.00 | 0 | 2.00 | | |
| | | | 9/6/17 | 9/12/17 | 6 | 0.69 | 0 | 0.69 | | |
| | | | 9/13/17 | 9/19/17 | 6 | 0.50 | 0 | 0.50 | 38.22 | |
| | | | Total Days: | | 30 | | | | | |
| Commercial | 23.52 | 0.22 | | | | | | | | |
| | | | 8/16/17 | 8/22/17 | 6 | 1.25 | 0 | 1.25 | | Commercial areas swept weekly. DGR sampling collected weekly by hand (Tuesdays) and prior to street sweeping (Wednesdays), thus a six-day period elapsed between sweeping and collection events. |
| | | | 8/23/17 | 8/29/17 | 6 | 0.88 | 0 | 0.88 | | |
| | | | 8/30/17 | 9/5/17 | 6 | 3.31 | 0 | 3.31 | | |
| | | | 9/6/17 | 9/12/17 | 6 | 1.94 | 0 | 1.94 | | |
| | | | 9/13/17 | 9/19/17 | 6 | 1.06 | 0 | 1.06 | 29.50 | |
| | | | Total Days: | | 30 | | | | | |
| Industrial | 8.79 | 0.36 | | | | | | | | |
| | | | 8/14/17 | 8/21/17 | 6 | 0.94 | 0 | 0.94 | | Industrial areas swept weekly. DGR sampling collected weekly (Mondays) by hand, and prior to street sweeping activities (Tuesdays). Thus a six-day period elapsed between sweeping and collection events. |
| | | | 8/22/17 | 8/28/17 | 6 | 0.69 | 0 | 0.69 | | |
| | | | 8/29/17 | 9/4/17 | 6 | 1.56 | 0 | 1.56 | | |
| | | | 9/5/17 | 9/11/17 | 6 | 1.38 | 0 | 1.38 | | |
| | | | 9/12/17 | 9/18/17 | 6 | 0.69 | 0 | 0.69 | 4.27 | |
| | | | Total Days: | | 30 | | | | | |
| Public Facilities / Educational Institutions | 6.04 | 0.19 | | | | | | | | |
| | | | 8/17/17 | 8/23/17 | 6 | 0.69 | 0 | 0.69 | | Public & Educational areas swept weekly. DGR sampling collected weekly (Wednesdays) by hand, and prior to street sweeping activities (Thursdays), thus a six-day period elapsed between sweeping and collection events. |
| | | | 8/24/17 | 8/30/17 | 6 | 0.44 | 0 | 0.44 | | |
| | | | 8/31/17 | 9/6/17 | 6 | 0.94 | 0 | 0.94 | | |
| | | | 9/7/17 | 9/13/17 | 6 | 0.19 | 0 | 0.19 | | |
| | | | 9/14/17 | 9/20/17 | 6 | 0.50 | 0 | 0.50 | 2.98 | |
| | | | Total Days: | | 30 | | | | | |
| Open Space / Recreation | 3.41 | 0.23 | | | | | | | | |
| | | | 8/16/17 | 8/22/17 | 6 | 0.50 | 0 | 0.50 | | Open Space & Recreational areas swept weekly. DGR sampling collected weekly (Tuesdays) by hand, and prior to street sweeping activities (Wednesdays). Thus a six-day period elapsed between sweeping and collection events. |
| | | | 8/23/17 | 8/29/17 | 6 | 0.63 | 0 | 0.63 | | |
| | | | 8/30/17 | 9/5/17 | 6 | 0.56 | 0 | 0.56 | | |
| | | | 9/6/17 | 9/12/17 | 6 | 1.13 | 0 | 1.13 | | |
| | | | 9/13/17 | 9/19/17 | 6 | 0.19 | 0 | 0.19 | 1.50 | |
| | | | Total Days: | | 30 | | | | | |
| Total Area | 174.02 | 1.36 | | | | | Total Trash (lbs) | 27.3 | 111.70 | |
| | | | | | | | DGR (lbs/day) | | | |
| Notes: | * Total collection period must equal 30 days for each representative land use area. | | | | | | | | | |
| Col. 1 | Land Use Category - Categories based on Baseline Monitoring Program conducted by LACDPW baseline monitoring group. Alternatively, describe land use type as designated by the City. | | | | | | | | | |
| Col. 2 | Total area of said land use within jurisdiction (fill in once in gray-highlighted row for each land use category). Total area may be accounted for using other approved measurement units, e.g. curb miles. | | | | | | | | | |
| Col. 3 | Representative area for DGR calculation (fill in once in gray-highlighted row for each land use category). Representative area may be accounted for using other approved measurement units, e.g. curb miles. Collectively, the areas used for DGR calculation should be representative, proportionally, of the land uses within the jurisdiction and must be approved by the EO prior to the 30-day collection period. | | | | | | | | | |
| Col. 4 | Date of last street sweeping | | | | | | | | | |
| Col. 5 | Date of DGR sampling (direct measurement of deposited trash) - The DGR collection period(s) must fall between June 22nd and September 22nd | | | | | | | | | |
| Col. 6 | Length of Collection Period in days - The DGR collection period must be 30 days, total, for each representative land use area | | | | | | | | | |
| Col. 7 | Trash collection from representative area through street sweeping or other method, lb. or gal. | | | | | | | | | |
| Col. 8 | Trash cleaned out from catchbasins within the representative area (lb. or gal.). Trash accumulated in the CBs during the DGR collection period must be included in the total trash generated. | | | | | | | | | |
| Col. 9 | Where CBs are closed off such that no trash can enter them for the purpose of DGR sampling, this value will be zero (0). | | | | | | | | | |
| Col. 9 | Total amount of trash generated in representative area (sum of Col. 7 and Col. 8), lb. or gal. | | | | | | | | | |

| | | | | | | | |
|--|---|---------------------|-----------------------|---------|--|-----------------------------|----------|
| Rainfall Station: Hawthorne Airport | | | | | | | |
| Total Trash Discharged by Storm Event | | | | | | | |
| Col. 1 | Col. 2 | Col. 3 | Col. 4 | Col. 5 | Col. 6 | Col. 7 | Col. 8 |
| DGR | Date of Last Street Sweeping | Date of Storm Event | Precipitation Depth * | Days ** | Amount of Trash Recovered from Catchbasins | Storm Event Trash Discharge | Comments |
| Notations: | | | | | | | |
| Form | Add additional rows for storm events, if necessary | | | | | | |
| Rainfall Station | Name of rainfall station used, indicate only the L.A. County station number | | | | | | |
| Total Storm Year Trash Discharge = Sum of individual storm event discharges for reporting period (October 1 - September 30). | | | | | | | |
| Col. 1 | DGR for Jurisdiction from DGR Sampling Data worksheet | | | | | | |
| Col. 2 | Date of last street sweeping | | | | | | |
| Col. 3 | Date of storm event with 0.25 inch or more of rainfall | | | | | | |
| Col. 4 | Depth of rainfall taken from nearest rainfall station (in.) | | | | | | |
| Col. 5 | Number of days between date of last street sweeping and storm event. For each day of a storm event that generates precipitation greater than 0.25 inch, the Permittee shall calculate a storm event discharge. When more than one storm event occurs prior to the next street sweeping the discharge shall be calculated from the date of the last storm event discharge calculation. | | | | | | |
| Col. 6 | Amount of trash recovered from catchbasins, if any (lb. or gal.) | | | | | | |
| Col. 7 | Storm Event Discharge = Col. 1 x Col. 5 - Col. 7 [trash discharged by the storm event], lbs. or gal. | | | | | | |
| Col. 8 | Provide comments, if necessary | | | | | | |

| Col. 1 | Col. 2 | Col. 3 | Col. 4 | Col. 5 | Col. 6 | Col. 7 | Col. 8 | Col. 9 | Col. 10 |
|------------------|-------------------------------|---------------------|-----------------------|-------------------------------------|--------------------------------|------------------------------|---------------------------|------------|----------|
| Reporting Period | Institutional Control Measure | | | Structural Control | | Required Trash Abatement (%) | Total Combined Compliance | Compliance | Comments |
| | Total Trash Discharged (lbs.) | Effluent Limitation | Equivalent Compliance | Total # CBs served by FCDs and PCDs | % of CBs served by FCDs / PCDs | | | | |
| 31-Oct-11 | | | | 604 | 96.2% | 60% | 96.2% | Yes | |
| 31-Oct-12 | | | | 604 | 96.2% | 70% | 96.2% | Yes | |
| 31-Oct-13 | | | | 604 | 96.2% | 80% | 96.2% | Yes | |
| 31-Oct-14 | | | | 604 | 96.2% | 90% | 96.2% | Yes | |
| 31-Oct-15 | 9,100 | 1,533 | 80.42% | 604 | 96.2% | 96.7% | 99.3% | Yes | |
| 31-Oct-16 | 6,500 | 465 | 86.0% | 604 | 96.2% | 99.0% | 99.5% | Yes | |
| 31-Oct-17 | 4,971 | 465 | 89.3% | 604 | 96.2% | 99.0% | 99.6% | Yes | |

Notations:

Form Structural Control Measure: Report compliance using land area served by FCD/PCDs or number of catchbasins served by FCD/PCDs.

Column 1: Reporting Period: Part 7.1.(C)(1) of Order No. 01-182 as amended by Order No. R4-2009-0130

Column 2: As calculated pursuant to Part 7.1.(B)(1)(b)(2) of Order No. 01-182 as amended by Order No. R4-2009-0130
 Alternative approaches per Part 7.1.(B)(1)(b)(3) must be approved in advance by the Executive Officer

Column 3: Effluent Limitation per Part 7.1, Appendix 7-1, Table 1a or 1b, of Order No. 01-182 as amended by Order No. R4-2009-0130

Column 4: Compliance = 1-(Col. 2 / Baseline Waste Load Allocation)

Column 5: Total number of catchbasins, total number of (CBs) served by FCD/PCDs within jurisdiction

Column 6: Percentage of CBs served by FCD/PCDs within jurisdiction

Column 7: Required Trash Abatement: Part 7.1, Appendix 7-1 of Order No. 01-182 as amended by Order No. R4-2009-0130

Column 8: Total Combined Compliance = (Col. 6) + (1.0-Col.6)*(Col.4)

Column 9: FCD Compliance: Yes, if Col. 8 is greater than Col. 7

Column 10: Provide comments, if necessary

Part 7.1 C(1)(a) -
L.A. County MS4 Permit
City of Lynwood
Annual Report (Dec-2017)

Certified Full Capture Systems Database

Date : 12/15/2017
Reporting year: 2016-2017
Prepared by: City of Lynwood

| Col. 1 | Col. 2 | | Col. 3 | Col. 4 | Col. 5 | Col. 6 | Col. 7 | Col. 8 | Col. 9 | Col. 10 | Col. 11 |
|----------------------------|--------------|-------------|-----------------------|-----------|-------------------|-----------------------|-------------------------|---------|----------|------------------|---|
| Certified FCD(s) Installed | FCD Location | | Nearest Cross Street | FCD Owner | FCD Maintained By | FCD Installation Date | CB ID No. Served by FCD | CB Type | CB Owner | CB Maintained By | Frequency of FCD Maintenance and other O&M comments |
| ARS & CPS | NW | SANTA FE | 111TH | CITY | CITY | 6/24/2011 | 1810 | 300-3 | CITY | CITY | Annually |
| ARS & CPS | | INDUSTRY | S CURB E OF S TURN | CITY | CITY | 6/13/2011 | 1810 | 300-3 | CITY | CITY | Annually |
| CPS | | INDUSTRY | W CURB N OF 180 | CITY | CITY | 6/13/2011 | 1810 | 300-3 | CITY | CITY | Annually |
| ARS & CPS | MID | MONA | E CURB, 120TH/119TH | CITY | CITY | 6/13/2011 | 1810 | 300-3 | CITY | CITY | Annually |
| ARS & CPS | NE | MONA | 117TH | CITY | CITY | 6/13/2011 | 1810 | 300-3 | CITY | CITY | Annually |
| ARS & CPS | NE | JUSTICE WAY | MONA | CITY | CITY | 6/13/2011 | 1810 | 300-3 | CITY | CITY | Annually |
| ARS & CPS | SE | JUSTICE WAY | MONA | CITY | CITY | 6/13/2011 | 1810 | 300-3 | CITY | CITY | Annually |
| ARS & CPS | NW | PENN | FERNWOOD | CITY | CITY | 6/13/2011 | 1810 | 300-3 | CITY | CITY | Annually |
| CPS | MID | RR TRACKS | 112ND/NORTON | CITY | CITY | 6/27/2011 | 1810 | 300-3 | CITY | CITY | Annually |
| ARS & CPS | SW | OAKWOOD | PEACH | CITY | CITY | 6/13/2011 | 1810 | 300-3 | CITY | CITY | Annually |
| ARS & CPS | NW | OAKWOOD | PEACH | CITY | CITY | 6/13/2011 | 1810 | 300-3 | CITY | CITY | Annually |
| ARS & CPS | NE | OAKWOOD | PEACH | CITY | CITY | 6/13/2011 | 1810 | 300-3 | CITY | CITY | Annually |
| CPS | MID | PEACH | FERNWOOD/BEECHWOOD | CITY | CITY | 6/30/2011 | 1810 | 302-3 | CITY | CITY | Annually |
| ARS & CPS | SOUTH | FERNWOOD | COPELAND | CITY | CITY | 6/13/2011 | 1810 | 300-3 | CITY | CITY | Annually |
| NONE | NE | CARSON | MARTIN LUTHER KING JR | CITY | CITY | 6/21/2011 | 1865 | 304-3 | CITY | COUNTY | Annually |
| ARS & CPS | SW | PINE | IMPERIAL | CITY | CITY | 6/21/2011 | 1865 | 300-3 | CITY | CITY | Annually |
| ARS & CPS | SE | IMPERIAL | PINE | CITY | CITY | 6/21/2011 | 1865 | 300-3 | CITY | CITY | Annually |
| ARS & CPS | NE | ATLANTIC | IMPERIAL | CITY | CITY | 6/21/2011 | 1865 | 300-3 | CITY | CITY | Annually |
| ARS & CPS | NW | IMPERIAL | PINE | CITY | CITY | 6/21/2011 | 1865 | 300-3 | CITY | CITY | Annually |
| ARS & CPS | NW | OTIS | ABBOTT | CITY | CITY | 6/18/2011 | 1865 | 300-3 | CITY | CITY | Annually |
| ARS & CPS | NW | OTIS | ABBOTT | CITY | CITY | 6/18/2011 | 1865 | 300-3 | CITY | CITY | Annually |
| ARS & CPS | NE | OTIS | ABBOTT | CITY | CITY | 6/18/2011 | 1865 | 300-3 | CITY | CITY | Annually |
| ARS & CPS | NE | OTIS | ABBOTT | CITY | CITY | 6/18/2011 | 1865 | 300-3 | CITY | CITY | Annually |
| ARS & CPS | NW | JOSEPHINE | WRIGHT | CITY | CITY | 6/20/2011 | 1866 | 300-3 | CITY | CITY | Annually |

Part 7.1 C(1)(a) -
L.A. County MS4 Permit
City of Lynwood
Annual Report (Dec-2017)

Certified Full Capture Systems Database

Date : 12/15/2017
Reporting year: 2016-2017
Prepared by: City of Lynwood

| Col. 1 | Col. 2 | | Col. 3 | Col. 4 | Col. 5 | Col. 6 | Col. 7 | Col. 8 | Col. 9 | Col. 10 | Col. 11 |
|----------------------------|--------------|-----------------------|-----------------------|-----------|-------------------|-----------------------|-------------------------|---------|----------|------------------|---|
| Certified FCD(s) Installed | FCD Location | | Nearest Cross Street | FCD Owner | FCD Maintained By | FCD Installation Date | CB ID No. Served by FCD | CB Type | CB Owner | CB Maintained By | Frequency of FCD Maintenance and other O&M comments |
| ARS & CPS | SW | TWEEDY | STATE | COUNTY | CITY | 6/18/2011 | 1809 | 300-3 | COUNTY | CITY | Annually |
| ARS & CPS | SE | TWEEDY | STATE | COUNTY | CITY | 6/18/2011 | 1809 | 300-3 | COUNTY | CITY | Annually |
| ARS & CPS | SW | MINNESOTA | STATE | COUNTY | CITY | 6/18/2011 | 1809 | 300-3 | COUNTY | CITY | Annually |
| ARS & CPS | NW | MINNESOTA | STATE | COUNTY | CITY | 6/18/2011 | 1809 | 300-3 | COUNTY | CITY | Annually |
| ARS & CPS | NW | STATE | MINNESOTA | COUNTY | CITY | 6/18/2011 | 1809 | 300-3 | COUNTY | CITY | Annually |
| ARS & CPS | NE | MINNESOTA | STATE | COUNTY | CITY | 6/18/2011 | 1809 | 300-3 | COUNTY | CITY | Annually |
| ARS & CPS | SW | WISCONSIN | STATE | COUNTY | CITY | 6/18/2011 | 1809 | 300-3 | COUNTY | CITY | Annually |
| CPS | NW | WISCONSIN | STATE | COUNTY | CITY | 6/18/2011 | 1809 | 300-3 | COUNTY | CITY | Annually |
| ARS & CPS | NW | STATE | WISCONSIN | COUNTY | CITY | 6/18/2011 | 1809 | 300-3 | COUNTY | CITY | Annually |
| ARS & CPS | NE | STATE | WISCONSIN | COUNTY | CITY | 6/18/2011 | 1809 | 300-3 | COUNTY | CITY | Annually |
| ARS & CPS | NW | STATE | MICHIGAN | COUNTY | CITY | 6/18/2011 | 1809 | 300-3 | COUNTY | CITY | Annually |
| ARS & CPS | NE | STATE | MICHIGAN | COUNTY | CITY | 6/18/2011 | 1809 | 300-3 | COUNTY | CITY | Annually |
| ARS & CPS | SW | SEMINOLE | SANTA FE | COUNTY | CITY | 6/13/2011 | 1810 | 300-3 | COUNTY | CITY | Annually |
| ARS & CPS | NW | MARTIN LUTHER KING JR | SANTA FE | COUNTY | CITY | 6/30/2011 | 1810 | 300-3 | COUNTY | CITY | Annually |
| ARS | NW | SANTA FE | MARTIN LUTHER KING JR | COUNTY | CITY | 6/30/2011 | 1810 | 300-3 | COUNTY | CITY | Annually |
| ARS | NE | SANTA FE | MARTIN LUTHER KING JR | COUNTY | CITY | 6/13/2011 | 1810 | 300-3 | COUNTY | CITY | Annually |
| CPS | NW | STATE | LOS FLORES | COUNTY | CITY | 6/13/2011 | 1810 | 300-3 | COUNTY | CITY | Annually |
| ARS & CPS | SW | POPLAR | STATE | COUNTY | CITY | 6/13/2011 | 1810 | 300-3 | COUNTY | CITY | Annually |
| ARS & CPS | NW | POPLAR | STATE | COUNTY | CITY | 6/13/2011 | 1810 | 300-3 | COUNTY | CITY | Annually |
| ARS & CPS | SW | STATE | NORTON | COUNTY | CITY | 6/14/2011 | 1810 | 300-3 | COUNTY | CITY | Annually |
| CPS | SW | NORTON | STATE | COUNTY | CITY | 6/14/2011 | 1810 | 300-3 | COUNTY | CITY | Annually |
| CPS | NW | NORTON | STATE | COUNTY | CITY | 6/14/2011 | 1810 | 302-3 | COUNTY | CITY | Annually |
| CPS | NW | STATE | NORTON | COUNTY | CITY | 6/14/2011 | 1810 | 302-3 | COUNTY | CITY | Annually |
| ARS & CPS | NE | STATE | NORTON | COUNTY | CITY | 6/14/2011 | 1810 | 300-3 | COUNTY | CITY | Annually |

| Col. 1 | Col. 2 | | Col. 3 | Col. 4 | Col. 5 | Col. 6 | Col. 7 | Col. 8 | Col. 9 | Col. 10 | Col. 11 |
|----------------------------|--------------|-----------------------|-----------------------|-----------|-------------------|-----------------------|-------------------------|---------|----------|------------------|---|
| Certified FCD(s) Installed | FCD Location | | Nearest Cross Street | FCD Owner | FCD Maintained By | FCD Installation Date | CB ID No. Served by FCD | CB Type | CB Owner | CB Maintained By | Frequency of FCD Maintenance and other O&M comments |
| CPS | SE | STATE | NORTON | COUNTY | CITY | 6/14/2011 | 1810 | 300-3 | COUNTY | CITY | Annually |
| CPS | MID | MARTIN LUTHER KING JR | OSGOOD/STATE | COUNTY | CITY | 6/14/2011 | 1810 | 302-3 | COUNTY | CITY | Annually |
| ARS & CPS | SW | MARTIN LUTHER KING JR | LONG BEACH | COUNTY | CITY | 6/14/2011 | 1810 | 300-3 | COUNTY | CITY | Annually |
| CPS | NW | MARTIN LUTHER KING JR | LONG BEACH | COUNTY | CITY | 6/14/2011 | 1810 | 300-3 | COUNTY | CITY | Annually |
| ARS & CPS | NW | LONG BEACH | MARTIN LUTHER KING JR | COUNTY | CITY | 6/14/2011 | 1810 | 300-3 | COUNTY | CITY | Annually |
| ARS | NE | LONG BEACH | MARTIN LUTHER KING JR | COUNTY | CITY | 6/14/2011 | 1810 | 300-3 | COUNTY | CITY | Annually |
| ARS & CPS | NE | MARTIN LUTHER KING JR | LONG BEACH | COUNTY | CITY | 6/14/2011 | 1810 | 300-3 | COUNTY | CITY | Annually |
| ARS & CPS | SE | MARTIN LUTHER KING JR | LONG BEACH | COUNTY | CITY | 6/14/2011 | 1810 | 300-3 | COUNTY | CITY | Annually |
| CPS | NW | CALIFORNIA | MARTIN LUTHER KING JR | COUNTY | CITY | 6/14/2011 | 1810 | 300-3 | COUNTY | CITY | Annually |
| CPS | NW | MARTIN LUTHER KING JR | CALIFORNIA | COUNTY | CITY | 6/14/2011 | 1810 | 300-3 | COUNTY | CITY | Annually |
| CPS | NW | CALIFORNIA | ALMA | COUNTY | CITY | 6/14/2011 | 1810 | 300-3 | COUNTY | CITY | Annually |
| ARS & CPS | NW | ALMA | CALIFORNIA | COUNTY | CITY | 6/14/2011 | 1810 | 300-3 | COUNTY | CITY | Annually |
| CPS | NW | ELIZABETH | CALIFORNIA | COUNTY | CITY | 6/14/2011 | 1810 | 300-3 | COUNTY | CITY | Annually |
| CPS | NW | ELIZABETH | CALIFORNIA | COUNTY | CITY | 6/14/2011 | 1810 | 300-3 | COUNTY | CITY | Annually |
| CPS | NW | CALIFORNIA | NORTON | COUNTY | CITY | 6/20/2011 | 1810 | 300-3 | COUNTY | CITY | Annually |
| CPS | NW | NORTON | CALIFORNIA | COUNTY | CITY | 6/14/2011 | 1810 | 300-3 | COUNTY | CITY | Annually |
| CPS | NE | NORTON | CALIFORNIA | COUNTY | CITY | 6/14/2011 | 1810 | 300-3 | COUNTY | CITY | Annually |
| CPS | NE | CALIFORNIA | NORTON | COUNTY | CITY | 6/14/2011 | 1810 | 300-3 | COUNTY | CITY | Annually |
| CPS | NE | CALIFORNIA | ELIZABETH | COUNTY | CITY | 6/14/2011 | 1810 | 300-3 | COUNTY | CITY | Annually |
| ARS & CPS | SW | ABBOTT | SAN CARLOS | COUNTY | CITY | 6/14/2011 | 1810 | 300-3 | COUNTY | CITY | Annually |
| CPS | NE | KING JR | CALIFORNIA | COUNTY | CITY | 6/14/2011 | 1810 | 300-3 | COUNTY | CITY | Annually |

Part 7.1 C(1)(a) -
L.A. County MS4 Permit
City of Lynwood
Annual Report (Dec-2017)

Certified Full Capture Systems Database

Date : 12/15/2017
Reporting year: 2016-2017
Prepared by: City of Lynwood

| Col. 1 | Col. 2 | | Col. 3 | Col. 4 | Col. 5 | Col. 6 | Col. 7 | Col. 8 | Col. 9 | Col. 10 | Col. 11 |
|----------------------------|--------------|-----------------------|------------------------------|-----------|-------------------|-----------------------|-------------------------|---------|----------|------------------|---|
| Certified FCD(s) Installed | FCD Location | | Nearest Cross Street | FCD Owner | FCD Maintained By | FCD Installation Date | CB ID No. Served by FCD | CB Type | CB Owner | CB Maintained By | Frequency of FCD Maintenance and other O&M comments |
| CPS | NE | CALIFORNIA | MARTIN LUTHER KING JR | COUNTY | CITY | 6/14/2011 | 1810 | 300-3 | COUNTY | CITY | Annually |
| CPS | NW | LONG BEACH | STATE | COUNTY | CITY | 6/14/2011 | 1810 | 302-3 | COUNTY | CITY | Annually |
| ARS & CPS | NE | LONG BEACH | STATE | COUNTY | CITY | 6/14/2011 | 1810 | 300-3 | COUNTY | CITY | Annually |
| ARS & CPS | MID | CHEROKEE | LONG BEACH/STATE | COUNTY | CITY | 6/14/2011 | 1810 | 300-3 | COUNTY | CITY | Annually |
| ARS & CPS | NW | LONG BEACH | CHEROKEE | COUNTY | CITY | 6/14/2011 | 1810 | 300-3 | COUNTY | CITY | Annually |
| ARS & CPS | NE | LONG BEACH | CHEROKEE | COUNTY | CITY | 6/14/2011 | 1810 | 300-3 | COUNTY | CITY | Annually |
| ARS & CPS | SW | SEQUOIA | STATE | COUNTY | CITY | 6/14/2011 | 1810 | 300-3 | COUNTY | CITY | Annually |
| ARS & CPS | NW | SEQUOIA | STATE | COUNTY | CITY | 6/14/2011 | 1810 | 300-3 | COUNTY | CITY | Annually |
| CPS | NW | STATE | SEQUOIA | COUNTY | CITY | 6/14/2011 | 1810 | 303-3 | COUNTY | CITY | Annually |
| ARS & CPS | NE | STATE | SEQUOIA | COUNTY | CITY | 6/14/2011 | 1810 | 300-3 | COUNTY | CITY | Annually |
| ARS & CPS | SW | MICHIGAN | STATE | COUNTY | CITY | 6/14/2011 | 1810 | 300-3 | COUNTY | CITY | Annually |
| CPS | NE | NORTON | SAN VINCENTE | COUNTY | CITY | 6/14/2011 | 1810 | 300-3 | COUNTY | CITY | Annually |
| CPS | NE | NORTON | MARTIN LUTHER KING JR/SAN | COUNTY | CITY | 6/14/2011 | 1810 | 300-3 | COUNTY | CITY | Annually |
| CPS | NE | SAN LUIS | MARTIN LUTHER KING JR/NORTON | COUNTY | CITY | 6/14/2011 | 1810 | 300-3 | COUNTY | CITY | Annually |
| CPS | NW | SAN LUIS | MARTIN LUTHER KING JR/NORTON | COUNTY | CITY | 6/14/2011 | 1810 | 303-3 | COUNTY | CITY | Annually |
| CPS | MID | MARTIN LUTHER KING JR | NORTON/SAN LUIS | COUNTY | CITY | 6/14/2011 | 1810 | 300-3 | COUNTY | CITY | Annually |
| CPS | NW | MARTIN LUTHER KING JR | NORTON | COUNTY | CITY | 6/14/2011 | 1810 | 300-3 | COUNTY | CITY | Annually |
| ARS & CPS | NE | SAN MIGUEL | ABBOTT | COUNTY | CITY | 6/15/2011 | 1810 | 300-3 | COUNTY | CITY | Annually |
| ARS | NW | SAN MIGUEL | ABBOTT | COUNTY | CITY | 6/15/2011 | 1810 | 300-3 | COUNTY | CITY | Annually |
| ARS & CPS | NE | ABBOTT | SAN LUIS | COUNTY | CITY | 6/15/2011 | 1810 | 300-3 | COUNTY | CITY | Annually |
| ARS | NE | SAN LUIS | ABBOTT | COUNTY | CITY | 6/15/2011 | 1810 | 300-3 | COUNTY | CITY | Annually |
| ARS & CPS | NW | SAN LUIS | ABBOTT | COUNTY | CITY | 6/15/2011 | 1810 | 300-3 | COUNTY | CITY | Annually |

Part 7.1 C(1)(a) -
L.A. County MS4 Permit
City of Lynwood
Annual Report (Dec-2017)

Certified Full Capture Systems Database

Date : 12/15/2017
Reporting year: 2016-2017
Prepared by: City of Lynwood

| Col. 1 | Col. 2 | | Col. 3 | Col. 4 | Col. 5 | Col. 6 | Col. 7 | Col. 8 | Col. 9 | Col. 10 | Col. 11 |
|----------------------------|--------------|-----------------------|-----------------------|-----------|-------------------|-----------------------|-------------------------|---------|----------|------------------|---|
| Certified FCD(s) Installed | FCD Location | | Nearest Cross Street | FCD Owner | FCD Maintained By | FCD Installation Date | CB ID No. Served by FCD | CB Type | CB Owner | CB Maintained By | Frequency of FCD Maintenance and other O&M comments |
| ARS & CPS | NW | ABBOTT | SAN LUIS/SAN JUAN | COUNTY | CITY | 6/15/2011 | 1810 | 300-3 | COUNTY | CITY | Annually |
| ARS & CPS | MID | ABBOTT | SAN JUAN/SAN LUIS | COUNTY | CITY | 6/15/2011 | 1810 | 300-3 | COUNTY | CITY | Annually |
| ARS & CPS | NE | ABBOTT | SAN GABRIEL | COUNTY | CITY | 6/15/2011 | 1810 | 300-3 | COUNTY | CITY | Annually |
| ARS & CPS | NE | SAN GABRIEL | ABBOTT | COUNTY | CITY | 6/15/2011 | 1810 | 300-3 | COUNTY | CITY | Annually |
| ARS | NW | SAN GABRIEL | ABBOTT | COUNTY | CITY | 6/15/2011 | 1810 | 300-3 | COUNTY | CITY | Annually |
| ARS & CPS | NE | ABBOTT | SAN CARLOS | COUNTY | CITY | 6/15/2011 | 1810 | 300-3 | COUNTY | CITY | Annually |
| ARS | NE | SAN CARLOS | ABBOTT | COUNTY | CITY | 6/15/2011 | 1810 | 300-3 | COUNTY | CITY | Annually |
| ARS & CPS | NW | SAN CARLOS | ABBOTT | COUNTY | CITY | 6/15/2011 | 1810 | 300-3 | COUNTY | CITY | Annually |
| ARS & CPS | NE | MARTIN LUTHER KING JR | SAN ANTONIO | COUNTY | CITY | 6/15/2011 | 1810 | 300-3 | COUNTY | CITY | Annually |
| ARS & CPS | NE | SAN ANTONIO | MARTIN LUTHER KING JR | COUNTY | CITY | 6/15/2011 | 1810 | 300-3 | COUNTY | CITY | Annually |
| ARS | NW | SAN ANTONIO | MARTIN LUTHER KING JR | COUNTY | CITY | 6/15/2011 | 1810 | 300-3 | COUNTY | CITY | Annually |
| ARS & CPS | NW | MARTIN LUTHER KING JR | SAN ANTONIO | COUNTY | CITY | 6/15/2011 | 1810 | 300-3 | COUNTY | CITY | Annually |
| ARS & CPS | NW | 111TH | LORRAINE | COUNTY | CITY | 6/15/2011 | 1810 | 300-3 | COUNTY | CITY | Annually |
| ARS & CPS | NW | LORRAINE | 111TH | COUNTY | CITY | 6/15/2011 | 1810 | 300-3 | COUNTY | CITY | Annually |
| CPS | NE | LORRAINE | 111TH | COUNTY | CITY | 6/15/2011 | 1810 | 300-3 | COUNTY | CITY | Annually |
| ARS & CPS | NE | SANTA FE | 111TH | COUNTY | CITY | 6/15/2011 | 1810 | 300-3 | COUNTY | CITY | Annually |
| NONE | NW | 111TH | SANTA FE | COUNTY | CITY | 6/13/2011 | 1810 | 300-3 | COUNTY | COUNTY | Annually |
| CPS | SW | 111TH | SANTA FE | COUNTY | CITY | 6/13/2011 | 1810 | 303-3 | COUNTY | CITY | Annually |
| ARS & CPS | NW | SANTA FE | NORTON | COUNTY | CITY | 6/15/2011 | 1810 | 300-3 | COUNTY | CITY | Annually |
| CPS | NW | NORTON | SANTA FE | COUNTY | CITY | 6/15/2011 | 1810 | 300-3 | COUNTY | CITY | Annually |
| ARS & CPS | NE | NORTON | SANTA FE | COUNTY | CITY | 6/15/2011 | 1810 | 300-3 | COUNTY | CITY | Annually |
| ARS & CPS | NE | SANTA FE | LOS FLORES | COUNTY | CITY | 6/15/2011 | 1810 | 300-3 | COUNTY | CITY | Annually |
| ARS & CPS | NW | SANTA FE | LOS FLORES | COUNTY | CITY | 6/15/2011 | 1810 | 300-3 | COUNTY | CITY | Annually |

Part 7.1 C(1)(a) -
L.A. County MS4 Permit
City of Lynwood
Annual Report (Dec-2017)

Certified Full Capture Systems Database

Date : 12/15/2017
Reporting year: 2016-2017
Prepared by: City of Lynwood

| Col. 1 | Col. 2 | | Col. 3 | Col. 4 | Col. 5 | Col. 6 | Col. 7 | Col. 8 | Col. 9 | Col. 10 | Col. 11 |
|----------------------------|--------------|-----------|------------------------|-----------|-------------------|-----------------------|-------------------------|---------|----------|------------------|---|
| Certified FCD(s) Installed | FCD Location | | Nearest Cross Street | FCD Owner | FCD Maintained By | FCD Installation Date | CB ID No. Served by FCD | CB Type | CB Owner | CB Maintained By | Frequency of FCD Maintenance and other O&M comments |
| ARS & CPS | NE | MONA | INDUSTRY | COUNTY | CITY | 6/15/2011 | 1810 | 300-3 | COUNTY | CITY | Annually |
| ARS & CPS | SE | MONA | INDUSTRY | COUNTY | CITY | 6/15/2011 | 1810 | 300-3 | COUNTY | CITY | Annually |
| NONE | | INDUSTRY | E CURB, BTW N & S TURN | COUNTY | CITY | 6/15/2011 | 1810 | | COUNTY | COUNTY | Annually |
| CPS | | INDUSTRY | E CURB, BTW N & S TURN | COUNTY | CITY | 6/15/2011 | 1810 | 300-3 | COUNTY | CITY | Annually |
| ARS & CPS | | INDUSTRY | W CURB N OF S TURN | COUNTY | CITY | 6/15/2011 | 1810 | 300-3 | COUNTY | CITY | Annually |
| ARS & CPS | | INDUSTRY | W CURB N OF S TURN | COUNTY | CITY | 6/15/2011 | 1810 | 300-3 | COUNTY | CITY | Annually |
| ARS & CPS | SE | VIRGINIA | STATE | COUNTY | CITY | 6/15/2011 | 1810 | 300-3 | COUNTY | CITY | Annually |
| ARS & CPS | NE | VIRGINIA | STATE | COUNTY | CITY | 6/15/2011 | 1810 | 300-3 | COUNTY | CITY | Annually |
| ARS & CPS | NE | STATE | VIRGINIA | COUNTY | CITY | 6/15/2011 | 1810 | 300-3 | COUNTY | CITY | Annually |
| CPS | NW | STATE | VIRGINIA | COUNTY | CITY | 6/15/2011 | 1810 | 302-3 | COUNTY | CITY | Annually |
| ARS & CPS | SE | JOSEPHINE | STATE | COUNTY | CITY | 6/16/2011 | 1810 | 300-3 | COUNTY | CITY | Annually |
| ARS & CPS | NE | JOSEPHINE | STATE | COUNTY | CITY | 6/16/2011 | 1810 | 300-3 | COUNTY | CITY | Annually |
| ARS & CPS | NE | STATE | JOSEPHINE | COUNTY | CITY | 6/16/2011 | 1810 | 300-3 | COUNTY | CITY | Annually |
| ARS & CPS | NE | STATE | LOUISE | COUNTY | CITY | 6/16/2011 | 1810 | 300-3 | COUNTY | CITY | Annually |
| CPS | NW | STATE | LOUISE | COUNTY | CITY | 6/16/2011 | 1810 | 302-3 | COUNTY | CITY | Annually |
| CPS | SW | STATE | FLOWER | COUNTY | CITY | 6/16/2011 | 1810 | 300-3 | COUNTY | CITY | Annually |
| ARS & CPS | H | LYNWOOD | ESTHER | COUNTY | CITY | 6/16/2011 | 1810 | 300-3 | COUNTY | CITY | Annually |
| ARS & CPS | SE | BELLINDER | LYNWOOD | COUNTY | CITY | 6/16/2011 | 1810 | 300-3 | COUNTY | CITY | Annually |
| ARS & CPS | SW | BELLINDER | LYNWOOD | COUNTY | CITY | 6/16/2011 | 1810 | 300-3 | COUNTY | CITY | Annually |
| NONE | NW | LYNWOOD | BELLINDER | COUNTY | CITY | 6/16/2011 | 1810 | | COUNTY | COUNTY | Annually |
| ARS & CPS | NW | BELLINDER | LYNWOOD | COUNTY | CITY | 6/16/2011 | 1810 | 300-3 | COUNTY | CITY | Annually |
| ARS & CPS | NE | BELLINDER | LYNWOOD | COUNTY | CITY | 6/16/2011 | 1810 | 300-3 | COUNTY | CITY | Annually |
| ARS & CPS | NE | IMPERIAL | BELLINGER | COUNTY | CITY | 6/16/2011 | 1810 | 300-3 | COUNTY | CITY | Annually |
| NONE | NE | IMPERIAL | FERNWOOD | COUNTY | CITY | 6/16/2011 | 1810 | | COUNTY | COUNTY | Annually |

Part 7.1 C(1)(a) -
L.A. County MS4 Permit
City of Lynwood
Annual Report (Dec-2017)

Certified Full Capture Systems Database

Date : 12/15/2017
Reporting year: 2016-2017
Prepared by: City of Lynwood

| Col. 1 | Col. 2 | | Col. 3 | Col. 4 | Col. 5 | Col. 6 | Col. 7 | Col. 8 | Col. 9 | Col. 10 | Col. 11 |
|----------------------------|--------------|-----------|----------------------|-----------|-------------------|-----------------------|-------------------------|---------|----------|------------------|---|
| Certified FCD(s) Installed | FCD Location | | Nearest Cross Street | FCD Owner | FCD Maintained By | FCD Installation Date | CB ID No. Served by FCD | CB Type | CB Owner | CB Maintained By | Frequency of FCD Maintenance and other O&M comments |
| ARS & CPS | NE | FERNWOOD | IMPERIAL | COUNTY | CITY | 6/16/2011 | 1810 | 300-3 | COUNTY | CITY | Annually |
| ARS & CPS | NW | BELLINGER | IMPERIAL | COUNTY | CITY | 6/16/2011 | 1810 | 300-3 | COUNTY | CITY | Annually |
| ARS & CPS | NE | FERNWOOD | FRANKLIN | COUNTY | CITY | 6/16/2011 | 1810 | 300-3 | COUNTY | CITY | Annually |
| ARS & CPS | NW | FRANKLIN | FERNWOOD | COUNTY | CITY | 6/16/2011 | 1810 | 300-3 | COUNTY | CITY | Annually |
| ARS & CPS | NW | FERNWOOD | FRANKLIN | COUNTY | CITY | 6/16/2011 | 1810 | 300-3 | COUNTY | CITY | Annually |
| ARS & CPS | SW | FERNWOOD | FRANKLIN | COUNTY | CITY | 6/16/2011 | 1810 | 300-3 | COUNTY | CITY | Annually |
| ARS & CPS | NW | FERNWOOD | PENN | COUNTY | CITY | 6/16/2011 | 1810 | 300-3 | COUNTY | CITY | Annually |
| ARS & CPS | SE | FERNWOOD | SANTA FE | COUNTY | CITY | 6/13/2011 | 1810 | 300-3 | COUNTY | CITY | Annually |
| ARS & CPS | NW | FERNWOOD | SANTA FE | COUNTY | CITY | 6/16/2011 | 1810 | 300-3 | COUNTY | CITY | Annually |
| ARS & CPS | SW | STATE | LOS FLORES | COUNTY | CITY | 6/16/2011 | 1810 | 300-3 | COUNTY | CITY | Annually |
| CPS | NW | OAKWOOD | STATE | COUNTY | CITY | 6/16/2011 | 1810 | 300-3 | COUNTY | CITY | Annually |
| ARS & CPS | SW | OAKWOOD | STATE | COUNTY | CITY | 6/16/2011 | 1810 | 300-3 | COUNTY | CITY | Annually |
| CPS | NW | STATE | IMPERIAL | COUNTY | CITY | 6/16/2011 | 1810 | 300-3 | COUNTY | CITY | Annually |
| CPS | NW | IMPERIAL | STATE | COUNTY | CITY | 6/16/2011 | 1810 | 300-3 | COUNTY | CITY | Annually |
| CPS | SW | IMPERIAL | STATE | COUNTY | CITY | 6/16/2011 | 1810 | 300-3 | COUNTY | CITY | Annually |
| CPS | NW | STATE | BEECHWOOD | COUNTY | CITY | 6/16/2011 | 1810 | 300-3 | COUNTY | CITY | Annually |
| ARS | NW | BEECHWOOD | STATE | COUNTY | CITY | 6/16/2011 | 1810 | 300-3 | COUNTY | CITY | Annually |
| CPS | SW | BEECHWOOD | STATE | COUNTY | CITY | 6/16/2011 | 1810 | 300-3 | COUNTY | CITY | Annually |
| ARS & CPS | NW | STATE | FERNWOOD | COUNTY | CITY | 6/16/2011 | 1810 | 300-3 | COUNTY | CITY | Annually |
| CPS | NW | FERNWOOD | STATE | COUNTY | CITY | 6/16/2011 | 1810 | 300-3 | COUNTY | CITY | Annually |
| CPS | NE | STATE | FERNWOOD | COUNTY | CITY | 6/17/2011 | 1810 | 300-3 | COUNTY | CITY | Annually |
| ARS & CPS | NE | STATE | BEECHWOOD | COUNTY | CITY | 6/17/2011 | 1810 | 300-3 | COUNTY | CITY | Annually |
| ARS & CPS | NE | STATE | IMPERIAL | COUNTY | CITY | 6/17/2011 | 1810 | 300-3 | COUNTY | CITY | Annually |
| ARS & CPS | NE | STATE | OAKWOOD | COUNTY | CITY | 6/17/2011 | 1810 | 300-3 | COUNTY | CITY | Annually |

Part 7.1 C(1)(a) -
L.A. County MS4 Permit
City of Lynwood
Annual Report (Dec-2017)

Certified Full Capture Systems Database

Date : 12/15/2017
Reporting year: 2016-2017
Prepared by: City of Lynwood

| Col. 1 | Col. 2 | | Col. 3 | Col. 4 | Col. 5 | Col. 6 | Col. 7 | Col. 8 | Col. 9 | Col. 10 | Col. 11 |
|----------------------------|--------------|------------|----------------------|-----------|-------------------|-----------------------|-------------------------|---------|----------|------------------|---|
| Certified FCD(s) Installed | FCD Location | | Nearest Cross Street | FCD Owner | FCD Maintained By | FCD Installation Date | CB ID No. Served by FCD | CB Type | CB Owner | CB Maintained By | Frequency of FCD Maintenance and other O&M comments |
| CPS | NW | IMPERIAL | PEACH | COUNTY | CITY | 6/17/2011 | 1810 | 303-3 | COUNTY | CITY | Annually |
| ARS & CPS | NW | PEACH | IMPERIAL | COUNTY | CITY | 6/17/2011 | 1810 | 300-3 | COUNTY | CITY | Annually |
| ARS & CPS | NE | PEACH | IMPERIAL | COUNTY | CITY | 6/17/2011 | 1810 | 300-3 | COUNTY | CITY | Annually |
| CPS | NE | IMPERIAL | PEACH | COUNTY | CITY | 6/17/2011 | 1810 | 300-3 | COUNTY | CITY | Annually |
| ARS & CPS | NW | IMPERIAL | LONG BEACH | COUNTY | CITY | 6/17/2011 | 1810 | 300-3 | COUNTY | CITY | Annually |
| CPS | NE | LONG BEACH | IMPERIAL | COUNTY | CITY | 6/17/2011 | 1810 | 300-3 | COUNTY | CITY | Annually |
| CPS | NW | PEACH | BEECHWOOD | COUNTY | CITY | 6/17/2011 | 1810 | 304-3 | COUNTY | CITY | Annually |
| CPS | NE | PEACH | BEECHWOOD | COUNTY | CITY | 6/17/2011 | 1810 | 304-3 | COUNTY | CITY | Annually |
| ARS & CPS | NE | BEECHWOOD | PEACH | COUNTY | CITY | 6/17/2011 | 1810 | 300-3 | COUNTY | CITY | Annually |
| CPS | MID | PEACH | FERNWOOD/BEECHWOOD | COUNTY | CITY | 6/17/2011 | 1810 | 304-3 | COUNTY | CITY | Annually |
| CPS | NE | CALIFORNIA | IMPERIAL | COUNTY | CITY | 6/17/2011 | 1810 | 300-3 | COUNTY | CITY | Annually |
| CPS | NW | CALIFORNIA | IMPERIAL | COUNTY | CITY | 6/17/2011 | 1810 | 300-3 | COUNTY | CITY | Annually |
| CPS | NE | LOS FLORES | CALIFORNIA | COUNTY | CITY | 6/17/2011 | 1810 | 300-3 | COUNTY | CITY | Annually |
| CPS | NE | CALIFORNIA | LOS FLORES | COUNTY | CITY | 6/17/2011 | 1810 | 300-3 | COUNTY | CITY | Annually |
| CPS | NW | CALIFORNIA | LOS FLORES | COUNTY | CITY | 6/17/2011 | 1810 | 300-3 | COUNTY | CITY | Annually |
| CPS | NW | LOS FLORES | CALIFORNIA | COUNTY | CITY | 6/17/2011 | 1810 | 303-3 | COUNTY | CITY | Annually |
| NONE | NE | PEACH | FERNWOOD | COUNTY | CITY | 6/17/2011 | 1810 | | COUNTY | COUNTY | Annually |
| NONE | NW | FERNWOOD | PEACH | COUNTY | CITY | 6/17/2011 | 1810 | | COUNTY | COUNTY | Annually |
| NONE | NE | FERNWOOD | PEACH | COUNTY | CITY | 6/17/2011 | 1810 | | COUNTY | COUNTY | Annually |
| NONE | NW | PEACH | FERNWOOD | COUNTY | CITY | 6/17/2011 | 1810 | | COUNTY | COUNTY | Annually |
| NONE | NW | APPRICOT | FERNWOOD | COUNTY | CITY | 6/17/2011 | 1810 | | COUNTY | COUNTY | Annually |
| NONE | NW | FERNWOOD | APPRICOT | COUNTY | CITY | 6/17/2011 | 1810 | | COUNTY | COUNTY | Annually |
| NONE | NW | GRAPE | FERNWOOD | COUNTY | CITY | 6/17/2011 | 1810 | | COUNTY | COUNTY | Annually |
| NONE | NW | FERNWOOD | GRAPE | COUNTY | CITY | 6/17/2011 | 1810 | | COUNTY | COUNTY | Annually |

Part 7.1 C(1)(a) -
L.A. County MS4 Permit
City of Lynwood
Annual Report (Dec-2017)

Certified Full Capture Systems Database

Date : 12/15/2017
Reporting year: 2016-2017
Prepared by: City of Lynwood

| Col. 1 | Col. 2 | | Col. 3 | Col. 4 | Col. 5 | Col. 6 | Col. 7 | Col. 8 | Col. 9 | Col. 10 | Col. 11 |
|----------------------------|--------------|-----------|----------------------|-----------|-------------------|-----------------------|-------------------------|---------|----------|------------------|---|
| Certified FCD(s) Installed | FCD Location | | Nearest Cross Street | FCD Owner | FCD Maintained By | FCD Installation Date | CB ID No. Served by FCD | CB Type | CB Owner | CB Maintained By | Frequency of FCD Maintenance and other O&M comments |
| ARS & CPS | NE | STATE | REDWOOD | COUNTY | CITY | 6/17/2011 | 1810 | 300-3 | COUNTY | CITY | Annually |
| ARS & CPS | NW | STATE | REDWOOD | COUNTY | CITY | 6/17/2011 | 1810 | 300-3 | COUNTY | CITY | Annually |
| CPS | NW | REDWOOD | STATE | COUNTY | CITY | 6/17/2011 | 1810 | 302-3 | COUNTY | CITY | Annually |
| ARS & CPS | SW | REDWOOD | STATE | COUNTY | CITY | 6/17/2011 | 1810 | 300-3 | COUNTY | CITY | Annually |
| CPS | NW | STATE | FLOWER | COUNTY | CITY | 6/17/2011 | 1810 | 300-3 | COUNTY | CITY | Annually |
| CPS | SW | STATE | FLOWER | COUNTY | CITY | 6/17/2011 | 1810 | 300-3 | COUNTY | CITY | Annually |
| ARS & CPS | NE | STATE | LYNWOOD | COUNTY | CITY | 6/17/2011 | 1810 | 300-3 | COUNTY | CITY | Annually |
| CPS | SW | JOSEPHINE | LINDBERGH | COUNTY | CITY | 6/20/2011 | 1810 | 303-3 | COUNTY | CITY | Annually |
| CPS | NW | JOSEPHINE | LINDBERGH | COUNTY | CITY | 6/20/2011 | 1810 | 300-3 | COUNTY | CITY | Annually |
| CPS | NW | LINDBERGH | JOSEPHINE | COUNTY | CITY | 6/20/2011 | 1810 | 303-3 | COUNTY | CITY | Annually |
| ARS & CPS | NE | LINDBERGH | JOSEPHINE | COUNTY | CITY | 6/20/2011 | 1810 | 300-3 | COUNTY | CITY | Annually |
| ARS & CPS | NW | LYNWOOD | SCHOOL | COUNTY | CITY | 6/20/2011 | 1810 | 300-3 | COUNTY | CITY | Annually |
| ARS & CPS | SE | LYNWOOD | SCHOOL | COUNTY | CITY | 6/20/2011 | 1810 | 300-3 | COUNTY | CITY | Annually |
| CPS | NW | FERNWOOD | COPELAND | COUNTY | CITY | 6/20/2011 | 1810 | 300-3 | COUNTY | CITY | Annually |
| ARS & CPS | MID | FERNWOOD | COPELAND/BIRCH | COUNTY | CITY | 6/20/2011 | 1810 | 300-3 | COUNTY | CITY | Annually |
| ARS & CPS | NW | BIRCH | FERNWOOD | COUNTY | CITY | 6/20/2011 | 1810 | 300-3 | COUNTY | CITY | Annually |
| CPS | NE | BIRCH | FERNWOOD | COUNTY | CITY | 6/20/2011 | 1810 | 300-3 | COUNTY | CITY | Annually |
| CPS | NW | FERNWOOD | FIR | COUNTY | CITY | 6/20/2011 | 1810 | 302-3 | COUNTY | CITY | Annually |
| ARS & CPS | NW | FIR | FERNWOOD | COUNTY | CITY | 6/20/2011 | 1810 | 300-3 | COUNTY | CITY | Annually |
| ARS & CPS | NE | FIR | FERNWOOD | COUNTY | CITY | 6/20/2011 | 1810 | 300-3 | COUNTY | CITY | Annually |
| CPS | NE | FERNWOOD | FIR | COUNTY | CITY | 6/20/2011 | 1810 | 302-3 | COUNTY | CITY | Annually |
| CPS | NW | SPRUCE | FERNWOOD | COUNTY | CITY | 6/20/2011 | 1810 | 302-3 | COUNTY | CITY | Annually |
| ARS & CPS | NE | SPRUCE | FERNWOOD | COUNTY | CITY | 6/20/2011 | 1810 | 300-3 | COUNTY | CITY | Annually |
| CPS | NW | FERNWOOD | BULLIS | COUNTY | CITY | 6/20/2011 | 1810 | 302-3 | COUNTY | CITY | Annually |

Part 7.1 C(1)(a) -
L.A. County MS4 Permit
City of Lynwood
Annual Report (Dec-2017)

Certified Full Capture Systems Database

Date : 12/15/2017
Reporting year: 2016-2017
Prepared by: City of Lynwood

| Col. 1 | Col. 2 | | Col. 3 | Col. 4 | Col. 5 | Col. 6 | Col. 7 | Col. 8 | Col. 9 | Col. 10 | Col. 11 |
|----------------------------|--------------|--------------|----------------------|-----------|-------------------|-----------------------|-------------------------|---------|----------|------------------|---|
| Certified FCD(s) Installed | FCD Location | | Nearest Cross Street | FCD Owner | FCD Maintained By | FCD Installation Date | CB ID No. Served by FCD | CB Type | CB Owner | CB Maintained By | Frequency of FCD Maintenance and other O&M comments |
| ARS & CPS | NW | BULLIS | FERNWOOD | COUNTY | CITY | 6/20/2011 | 1810 | 300-3 | COUNTY | CITY | Annually |
| ARS & CPS | SE | WALNUT | BIRCH | COUNTY | CITY | 6/20/2011 | 1810 | 300-3 | COUNTY | CITY | Annually |
| CPS | NE | WALNUT | BIRCH | COUNTY | CITY | 6/20/2011 | 1810 | 300-3 | COUNTY | CITY | Annually |
| ARS & CPS | NE | BIRCH | WALNUT | COUNTY | CITY | 6/20/2011 | 1810 | 300-3 | COUNTY | CITY | Annually |
| ARS & CPS | SW | PLATT | BIRCH | COUNTY | CITY | 6/20/2011 | 1810 | 300-3 | COUNTY | CITY | Annually |
| ARS & CPS | NW | PLATT | BIRCH | COUNTY | CITY | 6/20/2011 | 1810 | 300-3 | COUNTY | CITY | Annually |
| ARS & CPS | NW | BIRCH | PLATT | COUNTY | CITY | 6/20/2011 | 1810 | 300-3 | COUNTY | CITY | Annually |
| ARS & CPS | SE | PLATT | BIRCH | COUNTY | CITY | 6/20/2011 | 1810 | 300-3 | COUNTY | CITY | Annually |
| ARS & CPS | NE | PLATT | BIRCH | COUNTY | CITY | 6/20/2011 | 1810 | 300-3 | COUNTY | CITY | Annually |
| ARS & CPS | NE | BIRCH | PLATT | COUNTY | CITY | 6/20/2011 | 1810 | 300-3 | COUNTY | CITY | Annually |
| ARS & CPS | SW | MULFORD | BIRCH | COUNTY | CITY | 6/20/2011 | 1810 | 300-3 | COUNTY | CITY | Annually |
| ARS & CPS | NW | MULFORD | BIRCH | COUNTY | CITY | 6/20/2011 | 1810 | 300-3 | COUNTY | CITY | Annually |
| ARS & CPS | NW | BIRCH | MULFORD | COUNTY | CITY | 6/20/2011 | 1810 | 300-3 | COUNTY | CITY | Annually |
| CPS | NE | BIRCH | MULFORD | COUNTY | CITY | 6/20/2011 | 1810 | 300-3 | COUNTY | CITY | Annually |
| ARS & CPS | SW | SANBORN | BIRCH | COUNTY | CITY | 6/20/2011 | 1810 | 300-3 | COUNTY | CITY | Annually |
| ARS & CPS | NW | SANBORN | BIRCH | COUNTY | CITY | 6/20/2011 | 1810 | 300-3 | COUNTY | CITY | Annually |
| ARS & CPS | NW | BIRCH | SANBORN | COUNTY | CITY | 6/20/2011 | 1810 | 300-3 | COUNTY | CITY | Annually |
| ARS & CPS | SW | BEECHWOOD | BIRCH | COUNTY | CITY | 6/21/2011 | 1810 | 300-3 | COUNTY | CITY | Annually |
| ARS & CPS | NW | BEECHWOOD | BIRCH | COUNTY | CITY | 6/21/2011 | 1810 | 300-3 | COUNTY | CITY | Annually |
| ARS & CPS | NW | BIRCH | CESAR CHAVEZ | COUNTY | CITY | 6/21/2011 | 1810 | 300-3 | COUNTY | CITY | Annually |
| ARS & CPS | NE | BIRCH | CESAR CHAVEZ | COUNTY | CITY | 6/21/2011 | 1810 | 300-3 | COUNTY | CITY | Annually |
| CPS | SE | CESAR CHAVEZ | BIRCH | COUNTY | CITY | 6/21/2011 | 1810 | 300-3 | COUNTY | CITY | Annually |
| CPS | SW | IMPERIAL | BIRCH | COUNTY | CITY | 6/21/2011 | 1810 | 300-3 | COUNTY | CITY | Annually |
| CPS | SE | IMPERIAL | BIRCH | COUNTY | CITY | 6/21/2011 | 1810 | 300-3 | COUNTY | CITY | Annually |

Part 7.1 C(1)(a) -
L.A. County MS4 Permit
City of Lynwood
Annual Report (Dec-2017)

Certified Full Capture Systems Database

Date : 12/15/2017
Reporting year: 2016-2017
Prepared by: City of Lynwood

| Col. 1 | Col. 2 | | Col. 3 | Col. 4 | Col. 5 | Col. 6 | Col. 7 | Col. 8 | Col. 9 | Col. 10 | Col. 11 |
|----------------------------|--------------|-----------------------|-----------------------|-----------|-------------------|-----------------------|-------------------------|---------|----------|------------------|---|
| Certified FCD(s) Installed | FCD Location | | Nearest Cross Street | FCD Owner | FCD Maintained By | FCD Installation Date | CB ID No. Served by FCD | CB Type | CB Owner | CB Maintained By | Frequency of FCD Maintenance and other O&M comments |
| CPS | NE | IMPERIAL | BIRCH | COUNTY | CITY | 6/21/2011 | 1810 | 300-3 | COUNTY | CITY | Annually |
| CPS | NW | MARTIN LUTHER KING JR | IMPERIAL | COUNTY | CITY | 6/21/2011 | 1810 | 300-3 | COUNTY | CITY | Annually |
| CPS | NE | MARTIN LUTHER KING JR | IMPERIAL | COUNTY | CITY | 6/21/2011 | 1810 | 300-3 | COUNTY | CITY | Annually |
| CPS | NE | IMPERIAL | MARTIN LUTHER KING JR | COUNTY | CITY | 6/21/2011 | 1810 | 300-3 | COUNTY | CITY | Annually |
| CPS | WEST | IMPERIAL | NORTON | COUNTY | CITY | 6/21/2011 | 1810 | 300-3 | COUNTY | CITY | Annually |
| ARS & CPS | NE | SANTA FE | EL SEGUNDO | COUNTY | CITY | 6/21/2011 | 1811 | 300-3 | COUNTY | CITY | Annually |
| CPS | NE | EL SEGUNDO | SANTA FE | COUNTY | CITY | 6/21/2011 | 1811 | 300-3 | COUNTY | CITY | Annually |
| ARS & CPS | SE | EL SEGUNDO | SANTA FE | COUNTY | CITY | 6/21/2011 | 1811 | 300-3 | COUNTY | CITY | Annually |
| ARS & CPS | NE | SANTA FE | CARLIN | COUNTY | CITY | 6/21/2011 | 1811 | 300-3 | COUNTY | CITY | Annually |
| CPS | NE | CARLIN | SANTA FE | COUNTY | CITY | 6/21/2011 | 1811 | 300-3 | COUNTY | CITY | Annually |
| CPS | SE | CARLIN | SANTA FE | COUNTY | CITY | 6/21/2011 | 1811 | 300-3 | COUNTY | CITY | Annually |
| ARS & CPS | NE | SANTA FE | EUCLID | COUNTY | CITY | 6/21/2011 | 1811 | 300-3 | COUNTY | CITY | Annually |
| ARS & CPS | NE | EUCLID | SANTA FE | COUNTY | CITY | 6/21/2011 | 1811 | 300-3 | COUNTY | CITY | Annually |
| NONE | SE | EUCLID | SANTA FE | COUNTY | CITY | 6/21/2011 | 1811 | 300-3 | COUNTY | COUNTY | Annually |
| ARS & CPS | SE | BANNING | SANTA FE | COUNTY | CITY | 6/21/2011 | 1811 | 300-3 | COUNTY | CITY | Annually |
| CPS | NE | BANNING | SANTA FE | COUNTY | CITY | 6/21/2011 | 1811 | 300-3 | COUNTY | CITY | Annually |
| ARS & CPS | NE | SANTA FE | BANNING | COUNTY | CITY | 6/21/2011 | 1811 | 300-3 | COUNTY | CITY | Annually |
| CPS | SE | WEBBER | STATE | COUNTY | CITY | 6/21/2011 | 1811 | 300-3 | COUNTY | CITY | Annually |
| CPS | NE | WEBBER | STATE | COUNTY | CITY | 6/21/2011 | 1811 | 300-3 | COUNTY | CITY | Annually |
| CPS | SE | CEDAR | STATE | COUNTY | CITY | 6/21/2011 | 1811 | 300-3 | COUNTY | CITY | Annually |
| CPS | NE | CEDAR | STATE | COUNTY | CITY | 6/21/2011 | 1811 | 300-3 | COUNTY | CITY | Annually |
| ARS & CPS | SE | BANNING | PEACH | COUNTY | CITY | 6/21/2011 | 1811 | 300-3 | COUNTY | CITY | Annually |
| ARS & CPS | NE | BANNING | PEACH | COUNTY | CITY | 6/21/2011 | 1811 | 300-3 | COUNTY | CITY | Annually |

Part 7.1 C(1)(a) -
L.A. County MS4 Permit
City of Lynwood
Annual Report (Dec-2017)

Certified Full Capture Systems Database

Date : 12/15/2017
Reporting year: 2016-2017
Prepared by: City of Lynwood

| Col. 1 | Col. 2 | | Col. 3 | Col. 4 | Col. 5 | Col. 6 | Col. 7 | Col. 8 | Col. 9 | Col. 10 | Col. 11 |
|----------------------------|--------------|-----------|----------------------|-----------|-------------------|-----------------------|-------------------------|---------|----------|------------------|---|
| Certified FCD(s) Installed | FCD Location | | Nearest Cross Street | FCD Owner | FCD Maintained By | FCD Installation Date | CB ID No. Served by FCD | CB Type | CB Owner | CB Maintained By | Frequency of FCD Maintenance and other O&M comments |
| CPS | NE | PEACH | BANNING | COUNTY | CITY | 6/21/2011 | 1811 | 300-3 | COUNTY | CITY | Annually |
| ARS & CPS | NW | LINDBERGH | BANNING | COUNTY | CITY | 6/22/2011 | 1811 | 300-3 | COUNTY | CITY | Annually |
| CPS | NE | LINDBERGH | BANNING | COUNTY | CITY | 6/22/2011 | 1811 | 300-3 | COUNTY | CITY | Annually |
| CPS | SW | CEDAR | LINDBERGH | COUNTY | CITY | 6/21/2011 | 1811 | 300-3 | COUNTY | CITY | Annually |
| ARS & CPS | NW | CEDAR | LINDBERGH | COUNTY | CITY | 6/22/2011 | 1811 | 300-3 | COUNTY | CITY | Annually |
| ARS & CPS | NW | LINDBERGH | CEDAR | COUNTY | CITY | 6/22/2011 | 1811 | 300-3 | COUNTY | CITY | Annually |
| ARS & CPS | NE | LINDBERGH | CEDAR | COUNTY | CITY | 6/22/2011 | 1811 | 300-3 | COUNTY | CITY | Annually |
| ARS | NE | CEDAR | LINDBERGH | COUNTY | CITY | 6/22/2011 | 1811 | 300-3 | COUNTY | CITY | Annually |
| CPS | SW | VIRGINIA | LINDBERGH | COUNTY | CITY | 6/22/2011 | 1811 | 300-3 | COUNTY | CITY | Annually |
| ARS & CPS | NW | VIRGINIA | LINDBERGH | COUNTY | CITY | 6/22/2011 | 1811 | 300-3 | COUNTY | CITY | Annually |
| ARS & CPS | NW | LINDBERGH | VIRGINIA | COUNTY | CITY | 6/22/2011 | 1811 | 300-3 | COUNTY | CITY | Annually |
| ARS & CPS | SW | PLEASANT | LINDBERGH | COUNTY | CITY | 6/22/2011 | 1811 | 300-3 | COUNTY | CITY | Annually |
| ARS & CPS | NW | PLEASANT | LINDBERGH | COUNTY | CITY | 6/22/2011 | 1811 | 300-3 | COUNTY | CITY | Annually |
| ARS & CPS | NW | LINDBERGH | PLEASANT | COUNTY | CITY | 6/22/2011 | 1811 | 300-3 | COUNTY | CITY | Annually |
| CPS | NE | JOSEPHINE | SCHOOL | COUNTY | CITY | 6/22/2011 | 1811 | 300-3 | COUNTY | CITY | Annually |
| ARS & CPS | SW | JOSEPHINE | SCHOOL | COUNTY | CITY | 6/22/2011 | 1811 | 300-3 | COUNTY | CITY | Annually |
| CPS | NW | JOSEPHINE | SCHOOL | COUNTY | CITY | 6/22/2011 | 1811 | 300-3 | COUNTY | CITY | Annually |
| ARS & CPS | NW | SCHOOL | JOSEPHINE | COUNTY | CITY | 6/22/2011 | 1811 | 300-3 | COUNTY | CITY | Annually |
| CPS | NW | LOUISE | SCHOOL | COUNTY | CITY | 6/22/2011 | 1811 | 300-3 | COUNTY | CITY | Annually |
| CPS | NW | FIR | JOSEPHINE | COUNTY | CITY | 6/22/2011 | 1811 | 305-3 | COUNTY | CITY | Annually |
| CPS | NE | JOSEPHINE | FIR | COUNTY | CITY | 6/22/2011 | 1811 | 300-3 | COUNTY | CITY | Annually |
| CPS | NW | LYNWOOD | BULLIS | COUNTY | CITY | 6/22/2011 | 1811 | 302-3 | COUNTY | CITY | Annually |
| ARS & CPS | SW | LYNWOOD | BULLIS | COUNTY | CITY | 6/22/2011 | 1811 | 300-3 | COUNTY | CITY | Annually |
| ARS | SW | BULLIS | LYNWOOD | COUNTY | CITY | 6/22/2011 | 1811 | 300-3 | COUNTY | CITY | Annually |

Part 7.1 C(1)(a) -
L.A. County MS4 Permit
City of Lynwood
Annual Report (Dec-2017)

Certified Full Capture Systems Database

Date : 12/15/2017
Reporting year: 2016-2017
Prepared by: City of Lynwood

| Col. 1 | Col. 2 | | Col. 3 | Col. 4 | Col. 5 | Col. 6 | Col. 7 | Col. 8 | Col. 9 | Col. 10 | Col. 11 |
|----------------------------|--------------|-----------|----------------------|-----------|-------------------|-----------------------|-------------------------|---------|----------|------------------|---|
| Certified FCD(s) Installed | FCD Location | | Nearest Cross Street | FCD Owner | FCD Maintained By | FCD Installation Date | CB ID No. Served by FCD | CB Type | CB Owner | CB Maintained By | Frequency of FCD Maintenance and other O&M comments |
| ARS & CPS | NW | BULLIS | LOUISE | COUNTY | CITY | 6/22/2011 | 1811 | 300-3 | COUNTY | CITY | Annually |
| CPS | NE | BULLIS | LOUISE | COUNTY | CITY | 6/22/2011 | 1811 | 300-3 | COUNTY | CITY | Annually |
| CPS | NE | BULLIS | JOSEPHINE | COUNTY | CITY | 6/22/2011 | 1811 | 306-3 | COUNTY | CITY | Annually |
| ARS & CPS | NW | BULLIS | JOSEPHINE | COUNTY | CITY | 6/22/2011 | 1811 | 300-3 | COUNTY | CITY | Annually |
| ARS & CPS | NW | JOSEPHINE | BULLIS | COUNTY | CITY | 6/22/2011 | 1811 | 300-3 | COUNTY | CITY | Annually |
| CPS | SW | JOSEPHINE | BULLIS | COUNTY | CITY | 6/22/2011 | 1811 | 300-3 | COUNTY | CITY | Annually |
| CPS | SW | VIRGINIA | BULLIS | COUNTY | CITY | 6/22/2011 | 1811 | 300-3 | COUNTY | CITY | Annually |
| ARS & CPS | NW | VIRGINIA | BULLIS | COUNTY | CITY | 6/22/2011 | 1811 | 300-3 | COUNTY | CITY | Annually |
| ARS & CPS | NW | BULLIS | VIRGINIA | COUNTY | CITY | 6/22/2011 | 1811 | 300-3 | COUNTY | CITY | Annually |
| CPS | NE | BULLIS | VIRGINIA | COUNTY | CITY | 6/22/2011 | 1811 | 302-3 | COUNTY | CITY | Annually |
| ARS & CPS | SW | AGNES | BULLIS | COUNTY | CITY | 6/23/2011 | 1811 | 300-3 | COUNTY | CITY | Annually |
| CPS | NW | AGNES | BULLIS | COUNTY | CITY | 6/23/2011 | 1811 | 300-3 | COUNTY | CITY | Annually |
| ARS & CPS | NW | BULLIS | AGNES | COUNTY | CITY | 6/23/2011 | 1811 | 300-3 | COUNTY | CITY | Annually |
| CPS | NE | BULLIS | AGNES | COUNTY | CITY | 6/24/2011 | 1811 | 302-3 | COUNTY | CITY | Annually |
| CPS | NW | ERNESTINE | AGNES | COUNTY | CITY | 6/23/2011 | 1811 | 300-3 | COUNTY | CITY | Annually |
| ARS & CPS | SW | CEDAR | BULLIS | COUNTY | CITY | 6/23/2011 | 1811 | 300-3 | COUNTY | CITY | Annually |
| ARS & CPS | NW | CEDAR | BULLIS | COUNTY | CITY | 6/23/2011 | 1811 | 300-3 | COUNTY | CITY | Annually |
| CPS | NW | BULLIS | CEDAR | COUNTY | CITY | 6/23/2011 | 1811 | 300-3 | COUNTY | CITY | Annually |
| ARS & CPS | NE | BULLIS | CEDAR | COUNTY | CITY | 6/23/2011 | 1811 | 300-3 | COUNTY | CITY | Annually |
| ARS & CPS | SW | MAGNOLIA | BULLIS | COUNTY | CITY | 6/23/2011 | 1811 | 300-3 | COUNTY | CITY | Annually |
| CPS | NW | MAGNOLIA | BULLIS | COUNTY | CITY | 6/23/2011 | 1811 | 300-3 | COUNTY | CITY | Annually |
| ARS & CPS | NW | BULLIS | MAGNOLIA | COUNTY | CITY | 6/23/2011 | 1811 | 300-3 | COUNTY | CITY | Annually |
| ARS & CPS | NE | BULLIS | MAGNOLIA | COUNTY | CITY | 6/23/2011 | 1811 | 300-3 | COUNTY | CITY | Annually |
| ARS & CPS | SW | EUCLID | BULLIS | COUNTY | CITY | 6/23/2011 | 1811 | 300-3 | COUNTY | CITY | Annually |

Part 7.1 C(1)(a) -
L.A. County MS4 Permit
City of Lynwood
Annual Report (Dec-2017)

Certified Full Capture Systems Database

Date : 12/15/2017
Reporting year: 2016-2017
Prepared by: City of Lynwood

| Col. 1 | Col. 2 | | Col. 3 | Col. 4 | Col. 5 | Col. 6 | Col. 7 | Col. 8 | Col. 9 | Col. 10 | Col. 11 |
|----------------------------|--------------|----------|----------------------|-----------|-------------------|-----------------------|-------------------------|---------|----------|------------------|---|
| Certified FCD(s) Installed | FCD Location | | Nearest Cross Street | FCD Owner | FCD Maintained By | FCD Installation Date | CB ID No. Served by FCD | CB Type | CB Owner | CB Maintained By | Frequency of FCD Maintenance and other O&M comments |
| ARS & CPS | NW | EUCLID | BULLIS | COUNTY | CITY | 6/23/2011 | 1811 | 300-3 | COUNTY | CITY | Annually |
| ARS & CPS | NW | BULLIS | EUCLID | COUNTY | CITY | 6/23/2011 | 1811 | 300-3 | COUNTY | CITY | Annually |
| ARS & CPS | SW | PALM | BULLIS | COUNTY | CITY | 6/23/2011 | 1811 | 300-3 | COUNTY | CITY | Annually |
| ARS & CPS | NW | PALM | BULLIS | COUNTY | CITY | 6/23/2011 | 1811 | 300-3 | COUNTY | CITY | Annually |
| ARS & CPS | NW | BULLIS | PALM | COUNTY | CITY | 6/23/2011 | 1811 | 300-3 | COUNTY | CITY | Annually |
| CPS | SE | PALM | BULLIS | COUNTY | CITY | 6/23/2011 | 1811 | 302-3 | COUNTY | CITY | Annually |
| CPS | NE | PALM | BULLIS | COUNTY | CITY | 6/23/2011 | 1811 | 300-3 | COUNTY | CITY | Annually |
| ARS & CPS | NE | BULLIS | PALM | COUNTY | CITY | 6/23/2011 | 1811 | 300-3 | COUNTY | CITY | Annually |
| CPS | MID | BULLIS | E CURB, PALM/CARLIN | COUNTY | CITY | 6/23/2011 | 1811 | 305-3 | COUNTY | CITY | Annually |
| CPS | SE | CARLIN | BULLIS | COUNTY | CITY | 6/23/2011 | 1811 | 300-3 | COUNTY | CITY | Annually |
| CPS | NE | CARLIN | BULLIS | COUNTY | CITY | 6/23/2011 | 1811 | 300-3 | COUNTY | CITY | Annually |
| CPS | NE | BULLIS | CARLIN | COUNTY | CITY | 6/23/2011 | 1811 | 302-3 | COUNTY | CITY | Annually |
| ARS & CPS | SW | CARLIN | BULLIS | COUNTY | CITY | 6/23/2011 | 1811 | 300-3 | COUNTY | CITY | Annually |
| CPS | NW | CARLIN | BULLIS | COUNTY | CITY | 6/23/2011 | 1811 | 300-3 | COUNTY | CITY | Annually |
| ARS | NW | BULLIS | CARLIN | COUNTY | CITY | 6/23/2011 | 1811 | 300-3 | COUNTY | CITY | Annually |
| CPS | SW | BURTON | BULLIS | COUNTY | CITY | 6/23/2011 | 1811 | 300-3 | COUNTY | CITY | Annually |
| ARS & CPS | NW | BURTON | BULLIS | COUNTY | CITY | 6/23/2011 | 1811 | 300-3 | COUNTY | CITY | Annually |
| ARS & CPS | NW | BULLIS | BURTON | COUNTY | CITY | 6/23/2011 | 1811 | 300-3 | COUNTY | CITY | Annually |
| CPS | SE | BANNING | PEACH | COUNTY | CITY | 6/24/2011 | 1811 | 300-3 | COUNTY | CITY | Annually |
| CPS | NE | STATE | WEBBER | COUNTY | CITY | 6/24/2011 | 1811 | 302-3 | COUNTY | CITY | Annually |
| ARS & CPS | NW | BULLIS | ORCHARD | COUNTY | CITY | 6/23/2011 | 1811 | 300-3 | COUNTY | CITY | Annually |
| CPS | NW | BULLIS | LUGO | COUNTY | CITY | 6/24/2011 | 1865 | 300-3 | COUNTY | CITY | Annually |
| ARS & CPS | NW | ABBOTT | SAN VINCENTE | COUNTY | CITY | 6/23/2011 | 1865 | 300-3 | COUNTY | CITY | Annually |
| ARS & CPS | NW | MALLISON | ABBOTT | COUNTY | CITY | 6/23/2011 | 1865 | 300-3 | COUNTY | CITY | Annually |

Part 7.1 C(1)(a) -
L.A. County MS4 Permit
City of Lynwood
Annual Report (Dec-2017)

Certified Full Capture Systems Database

Date : 12/15/2017
Reporting year: 2016-2017
Prepared by: City of Lynwood

| Col. 1 | Col. 2 | | Col. 3 | Col. 4 | Col. 5 | Col. 6 | Col. 7 | Col. 8 | Col. 9 | Col. 10 | Col. 11 |
|----------------------------|--------------|------------|----------------------|-----------|-------------------|-----------------------|-------------------------|---------|----------|------------------|---|
| Certified FCD(s) Installed | FCD Location | | Nearest Cross Street | FCD Owner | FCD Maintained By | FCD Installation Date | CB ID No. Served by FCD | CB Type | CB Owner | CB Maintained By | Frequency of FCD Maintenance and other O&M comments |
| ARS | NE | MALLISON | ABBOTT | COUNTY | CITY | 6/23/2011 | 1865 | 300-3 | COUNTY | CITY | Annually |
| ARS & CPS | NE | ABBOTT | MALLISON | COUNTY | CITY | 6/23/2011 | 1865 | 300-3 | COUNTY | CITY | Annually |
| CPS | NW | ABBOTT | ROSEWOOD | COUNTY | CITY | 6/23/2011 | 1865 | 300-3 | COUNTY | CITY | Annually |
| ARS | NW | ROSEWOOD | ABBOTT | COUNTY | CITY | 6/23/2011 | 1865 | 300-3 | COUNTY | CITY | Annually |
| ARS & CPS | NE | ROSEWOOD | ABBOTT | COUNTY | CITY | 6/23/2011 | 1865 | 300-3 | COUNTY | CITY | Annually |
| ARS & CPS | NW | ABBOTT | PINEHURST | COUNTY | CITY | 6/23/2011 | 1865 | 300-3 | COUNTY | CITY | Annually |
| ARS | NW | PINEHURST | ABBOTT | COUNTY | CITY | 6/23/2011 | 1865 | 300-3 | COUNTY | CITY | Annually |
| CPS | NE | PINEHURST | ABBOTT | COUNTY | CITY | 6/23/2011 | 1865 | 302-3 | COUNTY | CITY | Annually |
| CPS | MID | ABBOTT | PINEHURST/ATLANTIC | COUNTY | CITY | 6/23/2011 | 1865 | 302-3 | COUNTY | CITY | Annually |
| CPS | NW | ABBOTT | ATLANTIC | COUNTY | CITY | 6/23/2011 | 1865 | 300-3 | COUNTY | CITY | Annually |
| CPS | NW | ATLANTIC | ABBOTT | COUNTY | CITY | 6/23/2011 | 1865 | 302-3 | COUNTY | CITY | Annually |
| CPS | NE | ATLANTIC | ABBOTT | COUNTY | CITY | 6/23/2011 | 1865 | 300-3 | COUNTY | CITY | Annually |
| ARS & CPS | NW | ANNETTA | ABBOTT | COUNTY | CITY | 6/23/2011 | 1865 | 300-3 | COUNTY | CITY | Annually |
| ARS & CPS | NW | ABBOTT | ANNETTA | COUNTY | CITY | 6/23/2011 | 1865 | 300-3 | COUNTY | CITY | Annually |
| CPS | NE | ANNETTA | ABBOTT | COUNTY | CITY | 6/24/2011 | 1865 | 300-3 | COUNTY | CITY | Annually |
| CPS | NW | HILDRETH | ABBOTT | COUNTY | CITY | 6/24/2011 | 1865 | 300-3 | COUNTY | CITY | Annually |
| ARS & CPS | NE | HILDRETH | ABBOTT | COUNTY | CITY | 6/24/2011 | 1865 | 300-3 | COUNTY | CITY | Annually |
| ARS & CPS | NW | ABBOTT | JACKSON | COUNTY | CITY | 6/24/2011 | 1865 | 300-3 | COUNTY | CITY | Annually |
| CPS | NW | JACKSON | ABBOTT | COUNTY | CITY | 6/24/2011 | 1865 | 300-3 | COUNTY | CITY | Annually |
| ARS & CPS | NE | JACKSON | ABBOTT | COUNTY | CITY | 6/24/2011 | 1865 | 300-3 | COUNTY | CITY | Annually |
| ARS & CPS | NE | ABBOTT | JACKSON | COUNTY | CITY | 6/24/2011 | 1865 | 300-3 | COUNTY | CITY | Annually |
| ARS & CPS | NW | WASHINGTON | ABBOTT | COUNTY | CITY | 6/24/2011 | 1865 | 300-3 | COUNTY | CITY | Annually |
| ARS | NE | WASHINGTON | ABBOTT | COUNTY | CITY | 6/24/2011 | 1865 | 300-3 | COUNTY | CITY | Annually |
| ARS | NW | ABBOTT | ORANGE | COUNTY | CITY | 6/24/2011 | 1865 | 300-3 | COUNTY | CITY | Annually |

Part 7.1 C(1)(a) -
L.A. County MS4 Permit
City of Lynwood
Annual Report (Dec-2017)

Certified Full Capture Systems Database

Date : 12/15/2017
Reporting year: 2016-2017
Prepared by: City of Lynwood

| Col. 1 | Col. 2 | | Col. 3 | Col. 4 | Col. 5 | Col. 6 | Col. 7 | Col. 8 | Col. 9 | Col. 10 | Col. 11 |
|----------------------------|--------------|--------------|----------------------|-----------|-------------------|-----------------------|-------------------------|---------|----------|------------------|---|
| Certified FCD(s) Installed | FCD Location | | Nearest Cross Street | FCD Owner | FCD Maintained By | FCD Installation Date | CB ID No. Served by FCD | CB Type | CB Owner | CB Maintained By | Frequency of FCD Maintenance and other O&M comments |
| ARS & CPS | NW | ORANGE | ABBOTT | COUNTY | CITY | 6/24/2011 | 1865 | 300-3 | COUNTY | CITY | Annually |
| ARS & CPS | NE | ORANGE | ABBOTT | COUNTY | CITY | 6/24/2011 | 1865 | 300-3 | COUNTY | CITY | Annually |
| ARS & CPS | NE | ABBOTT | ORANGE | COUNTY | CITY | 6/24/2011 | 1865 | 300-3 | COUNTY | CITY | Annually |
| ARS & CPS | NW | WALNUT | ABBOTT | COUNTY | CITY | 6/24/2011 | 1865 | 300-3 | COUNTY | CITY | Annually |
| ARS & CPS | NE | WALNUT | ABBOTT | COUNTY | CITY | 6/24/2011 | 1865 | 300-3 | COUNTY | CITY | Annually |
| ARS & CPS | NE | ABBOTT | DOROTHY | COUNTY | CITY | 6/24/2011 | 1865 | 300-3 | COUNTY | CITY | Annually |
| NONE | NE | DOROTHY | ABBOTT | COUNTY | CITY | 6/24/2011 | 1865 | | COUNTY | COUNTY | Annually |
| CPS | NW | DOROTHY | ABBOTT | COUNTY | CITY | 6/24/2011 | 1865 | 300-3 | COUNTY | CITY | Annually |
| CPS | NE | HUNT | ABBOTT | COUNTY | CITY | 6/24/2011 | 1865 | 300-3 | COUNTY | CITY | Annually |
| ARS & CPS | NW | HUNT | ABBOTT | COUNTY | CITY | 6/24/2011 | 1865 | 300-3 | COUNTY | CITY | Annually |
| ARS & CPS | NE | ABBOTT | HUNT | COUNTY | CITY | 6/24/2011 | 1865 | 300-3 | COUNTY | CITY | Annually |
| ARS & CPS | NE | ABBOTT | SAN MIGUEL | COUNTY | CITY | 6/24/2011 | 1865 | 300-3 | COUNTY | CITY | Annually |
| ARS | NW | SAN VINCENTE | ABBOTT | COUNTY | CITY | 6/24/2011 | 1865 | 300-3 | COUNTY | CITY | Annually |
| ARS & CPS | NE | SAN VINCENTE | ABBOTT | COUNTY | CITY | 6/24/2011 | 1865 | 300-3 | COUNTY | CITY | Annually |
| CPS | NW | RUTH | IMPERIAL | COUNTY | CITY | 6/24/2011 | 1865 | 300-3 | COUNTY | CITY | Annually |
| CPS | NE | RUTH | IMPERIAL | COUNTY | CITY | 6/24/2011 | 1865 | 300-3 | COUNTY | CITY | Annually |
| CPS | NE | IMPERIAL | RUTH | COUNTY | CITY | 6/24/2011 | 1865 | 300-3 | COUNTY | CITY | Annually |
| CPS | NW | OTIS | IMPERIAL | COUNTY | CITY | 6/24/2011 | 1865 | 300-3 | COUNTY | CITY | Annually |
| ARS & CPS | NE | OTIS | IMPERIAL | COUNTY | CITY | 6/24/2011 | 1865 | 300-3 | COUNTY | CITY | Annually |
| CPS | NE | IMPERIAL | OTIS | COUNTY | CITY | 6/24/2011 | 1865 | 302-3 | COUNTY | CITY | Annually |
| ARS & CPS | NW | OTIS | ALMA | COUNTY | CITY | 6/24/2011 | 1865 | 300-3 | COUNTY | CITY | Annually |
| ARS & CPS | WEST | OTIS | ALMA | COUNTY | CITY | 6/24/2011 | 1865 | 300-3 | COUNTY | CITY | Annually |
| CPS | NW | ABBOTT | MCNERNEY | COUNTY | CITY | 6/24/2011 | 1865 | 300-3 | COUNTY | CITY | Annually |
| ARS & CPS | NW | MCNERNEY | ABBOTT | COUNTY | CITY | 6/24/2011 | 1865 | 300-3 | COUNTY | CITY | Annually |

Part 7.1 C(1)(a) -
L.A. County MS4 Permit
City of Lynwood
Annual Report (Dec-2017)

Certified Full Capture Systems Database

Date : 12/15/2017
Reporting year: 2016-2017
Prepared by: City of Lynwood

| Col. 1 | Col. 2 | | Col. 3 | Col. 4 | Col. 5 | Col. 6 | Col. 7 | Col. 8 | Col. 9 | Col. 10 | Col. 11 |
|----------------------------|--------------|-----------|----------------------|-----------|-------------------|-----------------------|-------------------------|---------|----------|------------------|---|
| Certified FCD(s) Installed | FCD Location | | Nearest Cross Street | FCD Owner | FCD Maintained By | FCD Installation Date | CB ID No. Served by FCD | CB Type | CB Owner | CB Maintained By | Frequency of FCD Maintenance and other O&M comments |
| CPS | NE | MCNERNEY | ABBOTT | COUNTY | CITY | 6/24/2011 | 1865 | 300-3 | COUNTY | CITY | Annually |
| CPS | NW | ABBOTT | BOWMAN | COUNTY | CITY | 6/24/2011 | 1865 | 300-3 | COUNTY | CITY | Annually |
| ARS & CPS | NW | BOWMAN | ABBOTT | COUNTY | CITY | 6/24/2011 | 1865 | 300-3 | COUNTY | CITY | Annually |
| ARS & CPS | NE | BOWMAN | ABBOTT | COUNTY | CITY | 6/24/2011 | 1865 | 300-3 | COUNTY | CITY | Annually |
| ARS & CPS | NW | ALEXANDER | ABBOTT | COUNTY | CITY | 6/24/2011 | 1865 | 300-3 | COUNTY | CITY | Annually |
| ARS & CPS | NE | ALEXANDER | ABBOTT | COUNTY | CITY | 6/24/2011 | 1865 | 300-3 | COUNTY | CITY | Annually |
| ARS & CPS | NW | BRYSON | ABBOTT | COUNTY | CITY | 6/24/2011 | 1865 | 300-3 | COUNTY | CITY | Annually |
| ARS & CPS | NE | BRYSON | ABBOTT | COUNTY | CITY | 6/24/2011 | 1865 | 300-3 | COUNTY | CITY | Annually |
| CPS | NE | ABBOTT | BOWMAN | COUNTY | CITY | 6/24/2011 | 1865 | 300-3 | COUNTY | CITY | Annually |
| ARS & CPS | NE | ABBOTT | ALEXANDER | COUNTY | CITY | 6/24/2011 | 1865 | 300-3 | COUNTY | CITY | Annually |
| ARS & CPS | NE | ABBOTT | BYSON | COUNTY | CITY | 6/24/2011 | 1865 | 300-3 | COUNTY | CITY | Annually |
| ARS & CPS | NW | MCNERNEY | IMPERIAL | COUNTY | CITY | 6/24/2011 | 1865 | 300-3 | COUNTY | CITY | Annually |
| CPS | NE | MCNERNEY | IMPERIAL | COUNTY | CITY | 6/24/2011 | 1865 | 303-3 | COUNTY | CITY | Annually |
| CPS | NE | IMPERIAL | MCNERNEY | COUNTY | CITY | 6/24/2011 | 1865 | 303-3 | COUNTY | CITY | Annually |
| CPS | NW | IMPERIAL | FRACAR | COUNTY | CITY | 6/24/2011 | 1865 | 303-3 | COUNTY | CITY | Annually |
| ARS & CPS | SE | IMPERIAL | CARSON | COUNTY | CITY | 6/24/2011 | 1865 | 300-3 | COUNTY | CITY | Annually |
| CPS | SE | IMPERIAL | BULLIS | COUNTY | CITY | 6/24/2011 | 1865 | 300-3 | COUNTY | CITY | Annually |
| CPS | NE | LYNDORA | BULLIS | COUNTY | CITY | 6/27/2011 | 1865 | 302-3 | COUNTY | CITY | Annually |
| ARS & CPS | SE | LYNDORA | BULLIS | COUNTY | CITY | 6/27/2011 | 1865 | 300-3 | COUNTY | CITY | Annually |
| ARS & CPS | NE | LILITA | BULLIS | COUNTY | CITY | 6/27/2011 | 1865 | 300-3 | COUNTY | CITY | Annually |
| ARS & CPS | SE | LILITA | BULLIS | COUNTY | CITY | 6/27/2011 | 1865 | 300-3 | COUNTY | CITY | Annually |
| ARS | SE | LE SAGE | BULLIS | COUNTY | CITY | 6/27/2011 | 1865 | 300-3 | COUNTY | CITY | Annually |
| ARS & CPS | NE | LE SAGE | BULLIS | COUNTY | CITY | 6/27/2011 | 1865 | 300-3 | COUNTY | CITY | Annually |
| ARS & CPS | NE | BULLIS | LE SAGE | COUNTY | CITY | 6/27/2011 | 1865 | 300-3 | COUNTY | CITY | Annually |

Part 7.1 C(1)(a) -
L.A. County MS4 Permit
City of Lynwood
Annual Report (Dec-2017)

Certified Full Capture Systems Database

Date : 12/15/2017
Reporting year: 2016-2017
Prepared by: City of Lynwood

| Col. 1 | Col. 2 | | Col. 3 | Col. 4 | Col. 5 | Col. 6 | Col. 7 | Col. 8 | Col. 9 | Col. 10 | Col. 11 |
|----------------------------|--------------|-----------------------|-----------------------|-----------|-------------------|-----------------------|-------------------------|---------|----------|------------------|---|
| Certified FCD(s) Installed | FCD Location | | Nearest Cross Street | FCD Owner | FCD Maintained By | FCD Installation Date | CB ID No. Served by FCD | CB Type | CB Owner | CB Maintained By | Frequency of FCD Maintenance and other O&M comments |
| ARS & CPS | NE | BULLIS | LILITA | COUNTY | CITY | 6/27/2011 | 1865 | 300-3 | COUNTY | CITY | Annually |
| NONE | NW | BULLIS | LILITA | COUNTY | CITY | 6/27/2011 | 1865 | | COUNTY | COUNTY | Annually |
| NONE | NW | BULLIS | LE SAGE | COUNTY | CITY | 6/27/2011 | 1865 | | COUNTY | COUNTY | Annually |
| ARS & CPS | NW | BULLIS | MARTIN LUTHER KING JR | COUNTY | CITY | 6/27/2011 | 1865 | 300-3 | COUNTY | CITY | Annually |
| ARS & CPS | NW | MARTIN LUTHER KING JR | BULLIS | COUNTY | CITY | 6/27/2011 | 1865 | 300-3 | COUNTY | CITY | Annually |
| ARS & CPS | SW | MARTIN LUTHER KING JR | BULLIS | COUNTY | CITY | 6/27/2011 | 1865 | 300-3 | COUNTY | CITY | Annually |
| CPS | NE | BULLIS | MARTIN LUTHER KING JR | COUNTY | CITY | 6/27/2011 | 1865 | 300-3 | COUNTY | CITY | Annually |
| ARS | NE | HULME | MARTIN LUTHER KING JR | COUNTY | CITY | 6/27/2011 | 1865 | 300-3 | COUNTY | CITY | Annually |
| ARS & CPS | NW | HULME | MARTIN LUTHER KING JR | COUNTY | CITY | 6/27/2011 | 1865 | 300-3 | COUNTY | CITY | Annually |
| ARS & CPS | NW | MARTIN LUTHER KING JR | HULME | COUNTY | CITY | 6/27/2011 | 1865 | 300-3 | COUNTY | CITY | Annually |
| ARS & CPS | SE | CORTLAND | BULLIS | COUNTY | CITY | 6/27/2011 | 1865 | 300-3 | COUNTY | CITY | Annually |
| CPS | NE | CORTLAND | BULLIS | COUNTY | CITY | 6/27/2011 | 1865 | 300-3 | COUNTY | CITY | Annually |
| ARS & CPS | NE | BULLIS | CORTLAND | COUNTY | CITY | 6/27/2011 | 1865 | 300-3 | COUNTY | CITY | Annually |
| CPS | SE | LUGO | BULLIS | COUNTY | CITY | 6/27/2011 | 1865 | 300-3 | COUNTY | CITY | Annually |
| ARS & CPS | NE | LUGO | BULLIS | COUNTY | CITY | 6/27/2011 | 1865 | 300-3 | COUNTY | CITY | Annually |
| ARS & CPS | NE | BULLIS | LUGO | COUNTY | CITY | 6/27/2011 | 1865 | 300-3 | COUNTY | CITY | Annually |
| ARS & CPS | NW | BULLIS | WALNUT | COUNTY | CITY | 6/27/2011 | 1865 | 300-3 | COUNTY | CITY | Annually |
| ARS & CPS | NE | BULLIS | WALNUT | COUNTY | CITY | 6/27/2011 | 1865 | 300-3 | COUNTY | CITY | Annually |
| ARS & CPS | NW | BULLIS | PLATT | COUNTY | CITY | 6/27/2011 | 1865 | 300-3 | COUNTY | CITY | Annually |
| ARS & CPS | NE | BULLIS | PLATT | COUNTY | CITY | 6/27/2011 | 1865 | 300-3 | COUNTY | CITY | Annually |
| CPS | NW | MURIEL/BEECHWOOD | MARTIN LUTHER KING JR | COUNTY | CITY | 6/27/2011 | 1865 | 300-3 | COUNTY | CITY | Annually |
| ARS & CPS | NE | BEECHWOOD | MARTIN LUTHER KING JR | COUNTY | CITY | 6/27/2011 | 1865 | 300-3 | COUNTY | CITY | Annually |

Part 7.1 C(1)(a) -
L.A. County MS4 Permit
City of Lynwood
Annual Report (Dec-2017)

Certified Full Capture Systems Database

Date : 12/15/2017
Reporting year: 2016-2017
Prepared by: City of Lynwood

| Col. 1 | Col. 2 | | Col. 3 | Col. 4 | Col. 5 | Col. 6 | Col. 7 | Col. 8 | Col. 9 | Col. 10 | Col. 11 |
|----------------------------|--------------|-----------------------|-----------------------|-----------|-------------------|-----------------------|-------------------------|---------|----------|------------------|---|
| Certified FCD(s) Installed | FCD Location | | Nearest Cross Street | FCD Owner | FCD Maintained By | FCD Installation Date | CB ID No. Served by FCD | CB Type | CB Owner | CB Maintained By | Frequency of FCD Maintenance and other O&M comments |
| CPS | NW | MARTIN LUTHER KING JR | MURIEL/BEACHWOOD | COUNTY | CITY | 6/27/2011 | 1865 | 300-3 | COUNTY | CITY | Annually |
| CPS | NW | HARRIS | PLATT | COUNTY | CITY | 6/27/2011 | 1865 | 300-3 | COUNTY | CITY | Annually |
| CPS | NE | HARRIS | PLATT | COUNTY | CITY | 6/27/2011 | 1865 | 300-3 | COUNTY | CITY | Annually |
| CPS | NE | PLATT | HARRIS | COUNTY | CITY | 6/27/2011 | 1865 | 300-3 | COUNTY | CITY | Annually |
| CPS | NW | PLATT | HARRIS | COUNTY | CITY | 6/27/2011 | 1865 | 300-3 | COUNTY | CITY | Annually |
| CPS | MID | PLATT | MURIEL/HARRIS | COUNTY | CITY | 6/27/2011 | 1865 | 300-3 | COUNTY | CITY | Annually |
| CPS | NW | WOODLAWN | HARRIS | COUNTY | CITY | 6/27/2011 | 1865 | 300-3 | COUNTY | CITY | Annually |
| CPS | SW | MARTIN LUTHER KING JR | HARRIS | COUNTY | CITY | 6/27/2011 | 1865 | 300-3 | COUNTY | CITY | Annually |
| CPS | NW | MARTIN LUTHER KING JR | HARRIS | COUNTY | CITY | 6/27/2011 | 1865 | 300-3 | COUNTY | CITY | Annually |
| CPS | NW | HARRIS | MARTIN LUTHER KING JR | COUNTY | CITY | 6/27/2011 | 1865 | 300-3 | COUNTY | CITY | Annually |
| CPS | NE | HARRIS | MARTIN LUTHER KING JR | COUNTY | CITY | 6/27/2011 | 1865 | 300-3 | COUNTY | CITY | Annually |
| CPS | NE | MARTIN LUTHER KING JR | HARRIS | COUNTY | CITY | 6/27/2011 | 1865 | 300-3 | COUNTY | CITY | Annually |
| CPS | NE | ATLANTIC | BEECHWOOD | COUNTY | CITY | 6/27/2011 | 1865 | 300-3 | COUNTY | CITY | Annually |
| ARS & CPS | NW | ATLANTIC | BEECHWOOD | COUNTY | CITY | 6/27/2011 | 1865 | 300-3 | COUNTY | CITY | Annually |
| ARS & CPS | NW | BEECHWOOD | ATLANTIC | COUNTY | CITY | 6/27/2011 | 1865 | 300-3 | COUNTY | CITY | Annually |
| ARS & CPS | NE | LINDEN | BEECHWOOD | COUNTY | CITY | 6/27/2011 | 1865 | 300-3 | COUNTY | CITY | Annually |
| ARS & CPS | NW | LINDEN | BEECHWOOD | COUNTY | CITY | 6/27/2011 | 1865 | 300-3 | COUNTY | CITY | Annually |
| ARS & CPS | NW | BEECHWOOD | LINDEN | COUNTY | CITY | 6/27/2011 | 1865 | 300-3 | COUNTY | CITY | Annually |
| ARS & CPS | NE | ELM | BEECHWOOD | COUNTY | CITY | 6/27/2011 | 1865 | 300-3 | COUNTY | CITY | Annually |
| ARS & CPS | NW | ELM | BEECHWOOD | COUNTY | CITY | 6/27/2011 | 1865 | 300-3 | COUNTY | CITY | Annually |
| CPS | NW | BEECHWOOD | ELM | COUNTY | CITY | 6/27/2011 | 1865 | 300-3 | COUNTY | CITY | Annually |
| ARS & CPS | NE | PINE | BEECHWOOD | COUNTY | CITY | 6/27/2011 | 1865 | 300-3 | COUNTY | CITY | Annually |

Part 7.1 C(1)(a) -
L.A. County MS4 Permit
City of Lynwood
Annual Report (Dec-2017)

Certified Full Capture Systems Database

Date : 12/15/2017
Reporting year: 2016-2017
Prepared by: City of Lynwood

| Col. 1 | Col. 2 | | Col. 3 | Col. 4 | Col. 5 | Col. 6 | Col. 7 | Col. 8 | Col. 9 | Col. 10 | Col. 11 |
|----------------------------|--------------|------------|----------------------|-----------|-------------------|-----------------------|-------------------------|---------|----------|------------------|---|
| Certified FCD(s) Installed | FCD Location | | Nearest Cross Street | FCD Owner | FCD Maintained By | FCD Installation Date | CB ID No. Served by FCD | CB Type | CB Owner | CB Maintained By | Frequency of FCD Maintenance and other O&M comments |
| CPS | NW | PINE | BEECHWOOD | COUNTY | CITY | 6/27/2011 | 1865 | 300-3 | COUNTY | CITY | Annually |
| ARS & CPS | NW | BEECHWOOD | PINE | COUNTY | CITY | 6/27/2011 | 1865 | 300-3 | COUNTY | CITY | Annually |
| ARS | NE | HARRIS | BEECHWOOD | COUNTY | CITY | 6/27/2011 | 1865 | 300-3 | COUNTY | CITY | Annually |
| ARS & CPS | NW | HARRIS | BEECHWOOD | COUNTY | CITY | 6/27/2011 | 1865 | 300-3 | COUNTY | CITY | Annually |
| CPS | NW | BEECHWOOD | HARRIS | COUNTY | CITY | 6/27/2011 | 1865 | 300-3 | COUNTY | CITY | Annually |
| ARS & CPS | NE | LINDEN | ELMWOOD | COUNTY | CITY | 6/28/2011 | 1865 | 300-3 | COUNTY | CITY | Annually |
| ARS & CPS | NW | LINDEN | ELMWOOD | COUNTY | CITY | 6/28/2011 | 1865 | 300-3 | COUNTY | CITY | Annually |
| CPS | NW | ELMWOOD | LINDEN | COUNTY | CITY | 6/28/2011 | 1865 | 300-3 | COUNTY | CITY | Annually |
| ARS & CPS | NW | LOS FLORES | LINDEN | COUNTY | CITY | 6/28/2011 | 1865 | 300-3 | COUNTY | CITY | Annually |
| ARS & CPS | NW | LINDEN | LOS FLORES | COUNTY | CITY | 6/28/2011 | 1865 | 300-3 | COUNTY | CITY | Annually |
| ARS & CPS | SW | IMPERIAL | LINDEN | COUNTY | CITY | 6/28/2011 | 1865 | 300-3 | COUNTY | CITY | Annually |
| ARS & CPS | NE | IMPERIAL | ELM | COUNTY | CITY | 6/28/2011 | 1865 | 300-3 | COUNTY | CITY | Annually |
| ARS & CPS | NW | IMPERIAL | ELM | COUNTY | CITY | 6/28/2011 | 1865 | 300-3 | COUNTY | CITY | Annually |
| ARS & CPS | NE | IMPERIAL | PINE | COUNTY | CITY | 6/24/2011 | 1865 | 300-3 | COUNTY | CITY | Annually |
| ARS & CPS | NE | IMPERIAL | JACKSON | COUNTY | CITY | 6/24/2011 | 1865 | 300-3 | COUNTY | CITY | Annually |
| CPS | NW | IMPERIAL | JACKSON | COUNTY | CITY | 6/24/2011 | 1865 | 300-3 | COUNTY | CITY | Annually |
| CPS | NE | IMPERIAL | SAMPSON | COUNTY | CITY | 6/24/2011 | 1865 | 300-3 | COUNTY | CITY | Annually |
| ARS & CPS | NW | IMPERIAL | SAMPSON | COUNTY | CITY | 6/24/2011 | 1865 | 300-3 | COUNTY | CITY | Annually |
| ARS & CPS | SOUTH | IMPERIAL | SAMPSON | COUNTY | CITY | 6/24/2011 | 1865 | 300-3 | COUNTY | CITY | Annually |
| ARS & CPS | NORTH | IMPERIAL | LINDEN | COUNTY | CITY | 6/24/2011 | 1865 | 300-3 | COUNTY | CITY | Annually |
| CPS | NW | ATLANTIC | IMPERIAL | COUNTY | CITY | 6/24/2011 | 1865 | 300-3 | COUNTY | CITY | Annually |
| ARS & CPS | SE | IMPERIAL | LINDEN | COUNTY | CITY | 6/23/2011 | 1865 | 300-3 | COUNTY | CITY | Annually |
| CPS | NE | LOS FLORES | LINDEN | COUNTY | CITY | 6/23/2011 | 1865 | 300-3 | COUNTY | CITY | Annually |
| ARS & CPS | SW | IMPERIAL | DUNCAN | COUNTY | CITY | 6/23/2011 | 1865 | 300-3 | COUNTY | CITY | Annually |

Part 7.1 C(1)(a) -
L.A. County MS4 Permit
City of Lynwood
Annual Report (Dec-2017)

Certified Full Capture Systems Database

Date : 12/15/2017
Reporting year: 2016-2017
Prepared by: City of Lynwood

| Col. 1 | Col. 2 | | Col. 3 | Col. 4 | Col. 5 | Col. 6 | Col. 7 | Col. 8 | Col. 9 | Col. 10 | Col. 11 |
|----------------------------|--------------|------------|----------------------|-----------|-------------------|-----------------------|-------------------------|---------|----------|------------------|---|
| Certified FCD(s) Installed | FCD Location | | Nearest Cross Street | FCD Owner | FCD Maintained By | FCD Installation Date | CB ID No. Served by FCD | CB Type | CB Owner | CB Maintained By | Frequency of FCD Maintenance and other O&M comments |
| ARS & CPS | SE | DUNCAN | IMPERIAL | COUNTY | CITY | 6/23/2011 | 1865 | 300-3 | COUNTY | CITY | Annually |
| ARS & CPS | NE | DUNCAN | LOS FLORES | COUNTY | CITY | 6/23/2011 | 1865 | 300-3 | COUNTY | CITY | Annually |
| CPS | NW | DUNCAN | LOS FLORES | COUNTY | CITY | 6/23/2011 | 1865 | 302-3 | COUNTY | CITY | Annually |
| CPS | NW | LOS FLORES | DUNCAN | COUNTY | CITY | 6/23/2011 | 1865 | 301-3 | COUNTY | CITY | Annually |
| CPS | NE | DUNCAN | BORSON | COUNTY | CITY | 6/23/2011 | 1865 | 301-3 | COUNTY | CITY | Annually |
| CPS | NW | DUNCAN | BORSON | COUNTY | CITY | 6/23/2011 | 1865 | 300-3 | COUNTY | CITY | Annually |
| CPS | NE | DUNCAN | ELMWOOD | COUNTY | CITY | 6/23/2011 | 1865 | 301-3 | COUNTY | CITY | Annually |
| ARS & CPS | NW | DUNCAN | ELMWOOD | COUNTY | CITY | 6/23/2011 | 1865 | 300-3 | COUNTY | CITY | Annually |
| ARS & CPS | NW | ELMWOOD | DUNCAN | COUNTY | CITY | 6/23/2011 | 1865 | 300-3 | COUNTY | CITY | Annually |
| ARS & CPS | SW | ELMWOOD | DUNCAN | COUNTY | CITY | 6/23/2011 | 1865 | 300-3 | COUNTY | CITY | Annually |
| ARS & CPS | NW | SANBORN | LOUISE | COUNTY | CITY | 6/23/2011 | 1865 | 300-3 | COUNTY | CITY | Annually |
| ARS & CPS | NW | LOUISE | SANBORN | COUNTY | CITY | 6/23/2011 | 1865 | 300-3 | COUNTY | CITY | Annually |
| ARS & CPS | EAST | LOUISE | SANBORN | COUNTY | CITY | 6/23/2011 | 1865 | 300-3 | COUNTY | CITY | Annually |
| ARS | SE | BEECHWOOD | LOUISE | COUNTY | CITY | 6/23/2011 | 1865 | 300-3 | COUNTY | CITY | Annually |
| CPS | NE | BEECHWOOD | LOUISE | COUNTY | CITY | 6/23/2011 | 1865 | 302-3 | COUNTY | CITY | Annually |
| CPS | NE | LOUISE | BEECHWOOD | COUNTY | CITY | 6/23/2011 | 1865 | 302-3 | COUNTY | CITY | Annually |
| ARS & CPS | NW | LOUISE | BEECHWOOD | COUNTY | CITY | 6/23/2011 | 1865 | 300-3 | COUNTY | CITY | Annually |
| CPS | NW | BEECHWOOD | LOUISE | COUNTY | CITY | 6/23/2011 | 1865 | 301-3 | COUNTY | CITY | Annually |
| ARS & CPS | SW | BEECHWOOD | LOUISE | COUNTY | CITY | 6/23/2011 | 1865 | 300-3 | COUNTY | CITY | Annually |
| CPS | SW | BEECHWOOD | DUNCAN | COUNTY | CITY | 6/23/2011 | 1865 | 301-3 | COUNTY | CITY | Annually |
| CPS | SW | BEECHWOOD | POPE | COUNTY | CITY | 6/23/2011 | 1865 | 300-3 | COUNTY | CITY | Annually |
| CPS | SW | BEECHWOOD | VIRGINIA | COUNTY | CITY | 6/23/2011 | 1865 | 300-3 | COUNTY | CITY | Annually |
| CPS | NW | BEECHWOOD | VIRGINIA | COUNTY | CITY | 6/23/2011 | 1865 | 300-3 | COUNTY | CITY | Annually |
| CPS | NW | VIRGINIA | BEECHWOOD | COUNTY | CITY | 6/23/2011 | 1865 | 300-3 | COUNTY | CITY | Annually |

Part 7.1 C(1)(a) -
L.A. County MS4 Permit
City of Lynwood
Annual Report (Dec-2017)

Certified Full Capture Systems Database

Date : 12/15/2017
Reporting year: 2016-2017
Prepared by: City of Lynwood

| Col. 1 | Col. 2 | | Col. 3 | Col. 4 | Col. 5 | Col. 6 | Col. 7 | Col. 8 | Col. 9 | Col. 10 | Col. 11 |
|----------------------------|--------------|-----------------------|------------------------|-----------|-------------------|-----------------------|-------------------------|---------|----------|------------------|---|
| Certified FCD(s) Installed | FCD Location | | Nearest Cross Street | FCD Owner | FCD Maintained By | FCD Installation Date | CB ID No. Served by FCD | CB Type | CB Owner | CB Maintained By | Frequency of FCD Maintenance and other O&M comments |
| CPS | NE | VIRGINIA | BEECHWOOD | COUNTY | CITY | 6/23/2011 | 1865 | 300-3 | COUNTY | CITY | Annually |
| CPS | NW | BEECHWOOD | POPE | COUNTY | CITY | 6/23/2011 | 1865 | 300-3 | COUNTY | CITY | Annually |
| CPS | NW | POPE | BEECHWOOD | COUNTY | CITY | 6/23/2011 | 1865 | 300-3 | COUNTY | CITY | Annually |
| CPS | NE | POPE | BEECHWOOD | COUNTY | CITY | 6/23/2011 | 1865 | 300-3 | COUNTY | CITY | Annually |
| CPS | NW | BEECHWOOD | DUNCAN | COUNTY | CITY | 6/23/2011 | 1865 | 301-3 | COUNTY | CITY | Annually |
| CPS | NW | DUNCAN | BEECHWOOD | COUNTY | CITY | 6/23/2011 | 1865 | 300-3 | COUNTY | CITY | Annually |
| CPS | NE | DUNCAN | BEECHWOOD | COUNTY | CITY | 6/23/2011 | 1865 | 301-3 | COUNTY | CITY | Annually |
| ARS & CPS | | LOUISE | CUL-DE-SAC AT CORTLAND | COUNTY | CITY | 6/21/2011 | 1866 | 300-3 | COUNTY | CITY | Annually |
| ARS & CPS | NE | WRIGHT | FERNWOOD | COUNTY | CITY | 6/20/2011 | 1866 | 300-3 | COUNTY | CITY | Annually |
| ARS & CPS | SW | FERNWOOD | WRIGHT | COUNTY | CITY | 6/20/2011 | 1866 | 300-3 | COUNTY | CITY | Annually |
| ARS & CPS | NW | FERNWOOD | WRIGHT | COUNTY | CITY | 6/20/2011 | 1866 | 300-3 | COUNTY | CITY | Annually |
| ARS | NW | WRIGHT | FERNWOOD | COUNTY | CITY | 6/20/2011 | 1866 | 300-3 | COUNTY | CITY | Annually |
| NONE | NORTH | WRIGHT | FERNWOOD | COUNTY | CITY | 6/20/2011 | 1866 | | COUNTY | COUNTY | Annually |
| ARS & CPS | NW | LOUISE | CORTLAND | COUNTY | CITY | 6/21/2011 | 1866 | 300-3 | COUNTY | CITY | Annually |
| ARS & CPS | NE | LOUISE | CORTLAND | COUNTY | CITY | 6/21/2011 | 1866 | 300-3 | COUNTY | CITY | Annually |
| CPS | SW | WALNUT | LOUISE | COUNTY | CITY | 6/21/2011 | 1866 | 300-3 | COUNTY | CITY | Annually |
| ARS & CPS | NORTH | WALNUT | LOUISE | COUNTY | CITY | 6/21/2011 | 1866 | 300-3 | COUNTY | CITY | Annually |
| ARS & CPS | SOUTH | MARTIN LUTHER KING JR | LOUISE | COUNTY | CITY | 6/21/2011 | 1866 | 300-3 | COUNTY | CITY | Annually |
| ARS | NW | MARTIN LUTHER KING JR | LOUISE | COUNTY | CITY | 6/21/2011 | 1866 | 300-3 | COUNTY | CITY | Annually |
| ARS & CPS | WEST | MARTIN LUTHER KING JR | LOUISE | COUNTY | CITY | 6/21/2011 | 1866 | 300-3 | COUNTY | CITY | Annually |
| ARS & CPS | NW | LOUISE | MARTIN LUTHER KING JR | COUNTY | CITY | 6/21/2011 | 1866 | 300-3 | COUNTY | CITY | Annually |

Part 7.1 C(1)(a) -
L.A. County MS4 Permit
City of Lynwood
Annual Report (Dec-2017)

Certified Full Capture Systems Database

Date : 12/15/2017
Reporting year: 2016-2017
Prepared by: City of Lynwood

| Col. 1 | Col. 2 | | Col. 3 | Col. 4 | Col. 5 | Col. 6 | Col. 7 | Col. 8 | Col. 9 | Col. 10 | Col. 11 |
|----------------------------|--------------|-----------------------|-----------------------|-----------|-------------------|-----------------------|-------------------------|---------|----------|------------------|---|
| Certified FCD(s) Installed | FCD Location | | Nearest Cross Street | FCD Owner | FCD Maintained By | FCD Installation Date | CB ID No. Served by FCD | CB Type | CB Owner | CB Maintained By | Frequency of FCD Maintenance and other O&M comments |
| ARS & CPS | NE | LOUISE | MARTIN LUTHER KING JR | COUNTY | CITY | 6/21/2011 | 1866 | 300-3 | COUNTY | CITY | Annually |
| CPS | NE | MARTIN LUTHER KING JR | LOUISE | COUNTY | CITY | 6/21/2011 | 1866 | 300-3 | COUNTY | CITY | Annually |
| CPS | NW | WALNUT | GRANADA | COUNTY | CITY | 6/21/2011 | 1866 | 300-3 | COUNTY | CITY | Annually |
| CPS | MID | WALNUT | GRANADA/POPE | COUNTY | CITY | 6/21/2011 | 1866 | 300-3 | COUNTY | CITY | Annually |
| CPS | SE | VIRGINIA | WALNUT | COUNTY | CITY | 6/21/2011 | 1866 | 300-3 | COUNTY | CITY | Annually |
| CPS | NW | VIRGINIA | WALNUT | COUNTY | CITY | 6/21/2011 | 1866 | 300-3 | COUNTY | CITY | Annually |
| NONE | NE | ATLANTIC | WALNUT | COUNTY | CITY | 6/21/2011 | 1866 | | COUNTY | COUNTY | Annually |
| CPS | SW | WALNUT | ATLANTIC | COUNTY | CITY | 6/21/2011 | 1866 | 300-3 | COUNTY | CITY | Annually |
| CPS | NORTH | ATLANTIC | WALNUT | COUNTY | CITY | 6/21/2011 | 1866 | 300-3 | COUNTY | CITY | Annually |
| CPS | NW | ATLANTIC | WALNUT | COUNTY | CITY | 6/21/2011 | 1866 | 300-3 | COUNTY | CITY | Annually |
| CPS | NW | WALNUT | ATLANTIC | COUNTY | CITY | 6/21/2011 | 1866 | 300-3 | COUNTY | CITY | Annually |
| CPS | NW | WALNUT | HARRIS | COUNTY | CITY | 6/21/2011 | 1866 | 300-3 | COUNTY | CITY | Annually |
| CPS | NE | HARRIS | WALNUT | COUNTY | CITY | 6/21/2011 | 1866 | 300-3 | COUNTY | CITY | Annually |
| CPS | NE | WALNUT | HARRIS | COUNTY | CITY | 6/21/2011 | 1866 | 300-3 | COUNTY | CITY | Annually |
| CPS | NE | LUGO | HARRIS | COUNTY | CITY | 6/21/2011 | 1866 | 300-3 | COUNTY | CITY | Annually |
| CPS | NE | HARRIS | LUGO | COUNTY | CITY | 6/21/2011 | 1866 | 300-3 | COUNTY | CITY | Annually |
| CPS | NW | HARRIS | LUGO | COUNTY | CITY | 6/21/2011 | 1866 | 300-3 | COUNTY | CITY | Annually |
| CPS | NW | LUGO | HARRIS | COUNTY | CITY | 6/21/2011 | 1866 | 300-3 | COUNTY | CITY | Annually |
| ARS & CPS | NORTH | LUGO | HARRIS | COUNTY | CITY | 6/21/2011 | 1866 | 300-3 | COUNTY | CITY | Annually |
| CPS | SW | LUGO | HARRIS | COUNTY | CITY | 6/21/2011 | 1866 | 300-3 | COUNTY | CITY | Annually |
| CPS | NE | CORTLAND | HARRIS | COUNTY | CITY | 6/21/2011 | 1866 | 300-3 | COUNTY | CITY | Annually |
| CPS | NE | HARRIS | CORTLAND | COUNTY | CITY | 6/21/2011 | 1866 | 300-3 | COUNTY | CITY | Annually |
| CPS | NW | HARRIS | CORTLAND | COUNTY | CITY | 6/21/2011 | 1866 | 300-3 | COUNTY | CITY | Annually |
| CPS | NW | CORTLAND | HARRIS | COUNTY | CITY | 6/20/2011 | 1866 | 300-3 | COUNTY | CITY | Annually |

Part 7.1 C(1)(a) -
L.A. County MS4 Permit
City of Lynwood
Annual Report (Dec-2017)

Certified Full Capture Systems Database

Date : 12/15/2017
Reporting year: 2016-2017
Prepared by: City of Lynwood

| Col. 1 | Col. 2 | | Col. 3 | Col. 4 | Col. 5 | Col. 6 | Col. 7 | Col. 8 | Col. 9 | Col. 10 | Col. 11 |
|----------------------------|--------------|-----------|-----------------------------|-----------|-------------------|-----------------------|-------------------------|---------|----------|------------------|---|
| Certified FCD(s) Installed | FCD Location | | Nearest Cross Street | FCD Owner | FCD Maintained By | FCD Installation Date | CB ID No. Served by FCD | CB Type | CB Owner | CB Maintained By | Frequency of FCD Maintenance and other O&M comments |
| CPS | SW | CORTLAND | HARRIS | COUNTY | CITY | 6/20/2011 | 1866 | 300-3 | COUNTY | CITY | Annually |
| CPS | NE | HARRIS | BREWSTER | COUNTY | CITY | 6/20/2011 | 1866 | 300-3 | COUNTY | CITY | Annually |
| CPS | NW | HARRIS | FERNWOOD | COUNTY | CITY | 6/20/2011 | 1866 | 300-3 | COUNTY | CITY | Annually |
| CPS | NE | FERNWOOD | HARRIS | COUNTY | CITY | 6/20/2011 | 1866 | 300-3 | COUNTY | CITY | Annually |
| CPS | NW | FERNWOOD | HARRIS | COUNTY | CITY | 6/20/2011 | 1866 | 300-3 | COUNTY | CITY | Annually |
| CPS | NW | ELM | FERNWOOD | COUNTY | CITY | 6/20/2011 | 1866 | 300-3 | COUNTY | CITY | Annually |
| CPS | NE | ELM | FERNWOOD | COUNTY | CITY | 6/20/2011 | 1866 | 300-3 | COUNTY | CITY | Annually |
| CPS | NE | FERNWOOD | ELM | COUNTY | CITY | 6/20/2011 | 1866 | 300-3 | COUNTY | CITY | Annually |
| CPS | NE | 1ST | FERNWOOD | COUNTY | CITY | 6/20/2011 | 1866 | 300-3 | COUNTY | CITY | Annually |
| CPS | NE | FERNWOOD | 1ST | COUNTY | CITY | 6/20/2011 | 1866 | 300-3 | COUNTY | CITY | Annually |
| CPS | NW | FERNWOOD | ATLANTIC | COUNTY | CITY | 6/20/2011 | 1866 | 300-3 | COUNTY | CITY | Annually |
| ARS & CPS | NE | WRIGHT | LAVINA | COUNTY | CITY | 6/20/2011 | 1866 | 300-3 | COUNTY | CITY | Annually |
| ARS & CPS | NW | WRIGHT | LAVINA | COUNTY | CITY | 6/20/2011 | 1866 | 300-3 | COUNTY | CITY | Annually |
| ARS & CPS | NW | JOSEPHINE | WRIGHT | COUNTY | CITY | 6/20/2011 | 1866 | 300-3 | COUNTY | CITY | Annually |
| ARS & CPS | MID | VIETA | W CURB CORTLAND/FERNWOOD | COUNTY | CITY | 6/20/2011 | 1866 | 300-3 | COUNTY | CITY | Annually |
| ARS & CPS | MID | VIETA | E CURB CORTLAND/FERNWOOD | COUNTY | CITY | 6/20/2011 | 1866 | 300-3 | COUNTY | CITY | Annually |
| ARS & CPS | NE | VIETA | FERNWOOD | COUNTY | CITY | 6/20/2011 | 1866 | 300-3 | COUNTY | CITY | Annually |
| ARS & CPS | NW | VIETA | FERNWOOD | COUNTY | CITY | 6/20/2011 | 1866 | 300-3 | COUNTY | CITY | Annually |
| ARS & CPS | NW | FERNWOOD | VIETA | COUNTY | CITY | 6/20/2011 | 1866 | 300-3 | COUNTY | CITY | Annually |
| ARS | SW | FERNWOOD | VIETA | COUNTY | CITY | 6/20/2011 | 1866 | 300-3 | COUNTY | CITY | Annually |
| ARS & CPS | SE | 2ND | LAVINA | COUNTY | CITY | 6/20/2011 | 1866 | 300-3 | COUNTY | CITY | Annually |
| ARS & CPS | SW | 2ND | LAVINA | COUNTY | CITY | 6/20/2011 | 1866 | 300-3 | COUNTY | CITY | Annually |
| CPS | SW | LAVINA | 2ND | COUNTY | CITY | 6/20/2011 | 1866 | | COUNTY | CITY | Annually |

Part 7.1 C(1)(a) -
L.A. County MS4 Permit
City of Lynwood
Annual Report (Dec-2017)

Certified Full Capture Systems Database

Date : 12/15/2017
Reporting year: 2016-2017
Prepared by: City of Lynwood

| Col. 1 | Col. 2 | | Col. 3 | Col. 4 | Col. 5 | Col. 6 | Col. 7 | Col. 8 | Col. 9 | Col. 10 | Col. 11 |
|----------------------------|--------------|-----------|----------------------|-----------|-------------------|-----------------------|-------------------------|---------|----------|------------------|---|
| Certified FCD(s) Installed | FCD Location | | Nearest Cross Street | FCD Owner | FCD Maintained By | FCD Installation Date | CB ID No. Served by FCD | CB Type | CB Owner | CB Maintained By | Frequency of FCD Maintenance and other O&M comments |
| ARS | NW | 2ND | LAVINA | COUNTY | CITY | 6/20/2011 | 1866 | 300-3 | COUNTY | CITY | Annually |
| ARS & CPS | NE | 2ND | LAVINA | COUNTY | CITY | 6/20/2011 | 1866 | 300-3 | COUNTY | CITY | Annually |
| ARS & CPS | NW | 1ST | LAVINA | COUNTY | CITY | 6/17/2011 | 1866 | 300-3 | COUNTY | CITY | Annually |
| ARS & CPS | NE | 1ST | LAVINA | COUNTY | CITY | 6/17/2011 | 1866 | 300-3 | COUNTY | CITY | Annually |
| ARS & CPS | NE | LAVINA | 1ST | COUNTY | CITY | 6/17/2011 | 1866 | 300-3 | COUNTY | CITY | Annually |
| CPS | NW | ATLANTIC | LAVINA | COUNTY | CITY | 6/17/2011 | 1866 | 300-3 | COUNTY | CITY | Annually |
| CPS | SW | LAVINA | ATLANTIC | COUNTY | CITY | 6/17/2011 | 1866 | 300-3 | COUNTY | CITY | Annually |
| CPS | SE | ATLANTIC | LAVINA | COUNTY | CITY | 6/17/2011 | 1866 | 302-3 | COUNTY | CITY | Annually |
| CPS | NE | ATLANTIC | LAVINA | COUNTY | CITY | 6/17/2011 | 1866 | 300-3 | COUNTY | CITY | Annually |
| CPS | SE | AGNES | 1ST | COUNTY | CITY | 6/17/2011 | 1866 | 300-3 | COUNTY | CITY | Annually |
| CPS | NE | 1ST | AGNES | COUNTY | CITY | 6/17/2011 | 1866 | 300-3 | COUNTY | CITY | Annually |
| ARS & CPS | NE | 1ST | AGNES | COUNTY | CITY | 6/17/2011 | 1866 | 300-3 | COUNTY | CITY | Annually |
| CPS | NW | 1ST | AGNES | COUNTY | CITY | 6/17/2011 | 1866 | 300-3 | COUNTY | CITY | Annually |
| ARS & CPS | SE | JOSEPHINE | 1ST | COUNTY | CITY | 6/17/2011 | 1866 | 300-3 | COUNTY | CITY | Annually |
| ARS & CPS | NE | JOSEPHINE | 1ST | COUNTY | CITY | 6/17/2011 | 1866 | 300-3 | COUNTY | CITY | Annually |
| ARS & CPS | NW | 1ST | JOSEPHINE | COUNTY | CITY | 6/17/2011 | 1866 | 300-3 | COUNTY | CITY | Annually |
| ARS & CPS | SW | BRADFIELD | AGNES | COUNTY | CITY | 6/17/2011 | 1866 | 300-3 | COUNTY | CITY | Annually |
| CPS | NW | AGNES | BRADFIELD | COUNTY | CITY | 6/17/2011 | 1866 | 300-3 | COUNTY | CITY | Annually |
| ARS | NW | GERTRUDE | AGNES | COUNTY | CITY | 6/17/2011 | 1866 | 300-3 | COUNTY | CITY | Annually |
| CPS | NE | GERTRUDE | AGNES | COUNTY | CITY | 6/17/2011 | 1866 | 300-3 | COUNTY | CITY | Annually |
| NONE | NW | WALDORF | MCMILLAN | COUNTY | CITY | 6/17/2011 | 1866 | | COUNTY | COUNTY | Annually |
| ARS & CPS | NE | WALDORF | MCMILLAN | COUNTY | CITY | 6/17/2011 | 1866 | 300-3 | COUNTY | CITY | Annually |
| ARS & CPS | NE | STONEACRE | MCMILLAN | COUNTY | CITY | 6/17/2011 | 1866 | 300-3 | COUNTY | CITY | Annually |
| CPS | NW | MCMILLAN | COOKACRE | COUNTY | CITY | 6/16/2011 | 1866 | 301-3 | COUNTY | CITY | Annually |

Part 7.1 C(1)(a) -
L.A. County MS4 Permit
City of Lynwood
Annual Report (Dec-2017)

Certified Full Capture Systems Database

Date : 12/15/2017
Reporting year: 2016-2017
Prepared by: City of Lynwood

| Col. 1 | Col. 2 | | Col. 3 | Col. 4 | Col. 5 | Col. 6 | Col. 7 | Col. 8 | Col. 9 | Col. 10 | Col. 11 |
|----------------------------|--------------|-----------|----------------------|-----------|-------------------|-----------------------|-------------------------|---------|----------|------------------|---|
| Certified FCD(s) Installed | FCD Location | | Nearest Cross Street | FCD Owner | FCD Maintained By | FCD Installation Date | CB ID No. Served by FCD | CB Type | CB Owner | CB Maintained By | Frequency of FCD Maintenance and other O&M comments |
| ARS & CPS | NW | COOKACRE | MCMILLAN | COUNTY | CITY | 6/16/2011 | 1866 | 300-3 | COUNTY | CITY | Annually |
| CPS | NE | COOKACRE | MCMILLAN | COUNTY | CITY | 6/16/2011 | 1866 | 300-3 | COUNTY | CITY | Annually |
| ARS & CPS | NE | COOKACRE | OLANDA | COUNTY | CITY | 6/16/2011 | 1866 | 300-3 | COUNTY | CITY | Annually |
| ARS & CPS | NW | COOKACRE | OLANDA | COUNTY | CITY | 6/16/2011 | 1866 | 300-3 | COUNTY | CITY | Annually |
| CPS | NW | OLANDA | COOKACRE | COUNTY | CITY | 6/16/2011 | 1866 | 301-3 | COUNTY | CITY | Annually |
| CPS | SW | ARLINGTON | GIBSON | COUNTY | CITY | 6/16/2011 | 1866 | 301-3 | COUNTY | CITY | Annually |
| CPS | NW | ARLINGTON | GIBSON | COUNTY | CITY | 6/16/2011 | 1866 | 301-3 | COUNTY | CITY | Annually |
| ARS & CPS | NW | GIBSON | ARLINGTON | COUNTY | CITY | 6/16/2011 | 1866 | 300-3 | COUNTY | CITY | Annually |
| ARS | SE | FERTILE | WRIGHT | COUNTY | CITY | 6/16/2011 | 1866 | 300-3 | COUNTY | CITY | Annually |
| CPS | WEST | WRIGHT | FERTILE | COUNTY | CITY | 6/16/2011 | 1866 | 300-3 | COUNTY | CITY | Annually |
| ARS & CPS | NE | WRIGHT | FERTILE | COUNTY | CITY | 6/16/2011 | 1866 | 300-3 | COUNTY | CITY | Annually |
| ARS & CPS | NE | FERTILE | WRIGHT | COUNTY | CITY | 6/16/2011 | 1866 | 300-3 | COUNTY | CITY | Annually |
| CPS | SE | OLANDA | WRIGHT | COUNTY | CITY | 6/16/2011 | 1866 | 300-3 | COUNTY | CITY | Annually |
| CPS | NE | OLANDA | WRIGHT | COUNTY | CITY | 6/16/2011 | 1866 | 300-3 | COUNTY | CITY | Annually |
| ARS & CPS | NW | WRIGHT | OLANDA | COUNTY | CITY | 6/16/2011 | 1866 | 300-3 | COUNTY | CITY | Annually |
| CPS | SW | RAYBORN | WRIGHT | COUNTY | CITY | 6/16/2011 | 1866 | 300-3 | COUNTY | CITY | Annually |
| ARS & CPS | WEST | WRIGHT | RAYBORN | COUNTY | CITY | 6/16/2011 | 1866 | 300-3 | COUNTY | CITY | Annually |
| ARS & CPS | NE | WRIGHT | RAYBORN | COUNTY | CITY | 6/16/2011 | 1866 | 300-3 | COUNTY | CITY | Annually |
| CPS | NE | RAYBORN | WRIGHT | COUNTY | CITY | 6/16/2011 | 1866 | 300-3 | COUNTY | CITY | Annually |
| ARS & CPS | SE | CLARK | WRIGHT | COUNTY | CITY | 6/13/2011 | 1866 | 300-3 | COUNTY | CITY | Annually |
| ARS & CPS | SW | WRIGHT | CLARK | COUNTY | CITY | 6/13/2011 | 1866 | 300-3 | COUNTY | CITY | Annually |
| ARS & CPS | NW | WRIGHT | CLARK | COUNTY | CITY | 6/13/2011 | 1866 | 300-3 | COUNTY | CITY | Annually |
| ARS & CPS | NW | CLARK | WRIGHT | COUNTY | CITY | 6/13/2011 | 1866 | 300-3 | COUNTY | CITY | Annually |
| ARS & CPS | NE | WRIGHT | CLARK | COUNTY | CITY | 6/13/2011 | 1866 | 300-3 | COUNTY | CITY | Annually |

Part 7.1 C(1)(a) -
L.A. County MS4 Permit
City of Lynwood
Annual Report (Dec-2017)

Certified Full Capture Systems Database

Date : 12/15/2017
Reporting year: 2016-2017
Prepared by: City of Lynwood

| Col. 1 | Col. 2 | | Col. 3 | Col. 4 | Col. 5 | Col. 6 | Col. 7 | Col. 8 | Col. 9 | Col. 10 | Col. 11 |
|----------------------------|----------------------|----------|----------------------|-----------|-------------------|-----------------------|-------------------------|---------|----------|------------------|---|
| Certified FCD(s) Installed | FCD Location | | Nearest Cross Street | FCD Owner | FCD Maintained By | FCD Installation Date | CB ID No. Served by FCD | CB Type | CB Owner | CB Maintained By | Frequency of FCD Maintenance and other O&M comments |
| ARS & CPS | NE | CLARK | WRIGHT | COUNTY | CITY | 6/13/2011 | 1866 | 300-3 | COUNTY | CITY | Annually |
| CPS | NW | HALO | CARLIN | COUNTY | CITY | 6/13/2011 | 1866 | 301-3 | COUNTY | CITY | Annually |
| ARS & CPS | NW | CARLIN | HALO | COUNTY | CITY | 6/13/2011 | 1866 | 300-3 | COUNTY | CITY | Annually |
| CPS | NE | HALO | CARLIN | COUNTY | CITY | 6/13/2011 | 1866 | 301-3 | COUNTY | CITY | Annually |
| ARS | SOUTH | CARLIN | MILLRACE | COUNTY | CITY | 6/13/2011 | 1866 | 300-3 | COUNTY | CITY | Annually |
| ARS & CPS | NW | CARLIN | MILLRACE | COUNTY | CITY | 6/13/2011 | 1866 | 300-3 | COUNTY | CITY | Annually |
| ARS & CPS | NW | MILLRACE | CARLIN | COUNTY | CITY | 6/13/2011 | 1866 | 300-3 | COUNTY | CITY | Annually |
| ARS & CPS | NE | MILLRACE | CARLIN | COUNTY | CITY | 6/13/2011 | 1866 | 300-3 | COUNTY | CITY | Annually |
| ARS & CPS | SW | OLANDA | GIBSON | COUNTY | CITY | 6/13/2011 | 1866 | 300-3 | COUNTY | CITY | Annually |
| ARS & CPS | NW | OLANDA | GIBSON | COUNTY | CITY | 6/13/2011 | 1866 | 300-3 | COUNTY | CITY | Annually |
| ARS & CPS | NW | CARLIN | OLANDA | COUNTY | CITY | 6/13/2011 | 1866 | 300-3 | COUNTY | CITY | Annually |
| ARS & CPS | NE | CARLIN | OLANDA | COUNTY | CITY | 6/13/2011 | 1866 | 300-3 | COUNTY | CITY | Annually |
| ARS & CPS | NE | OLANDA | CARLIN | COUNTY | CITY | 6/13/2011 | 1866 | 300-3 | COUNTY | CITY | Annually |
| CPS | SE | OLANDA | CARLIN | COUNTY | CITY | 6/13/2011 | 1866 | 300-3 | COUNTY | CITY | Annually |
| CPS | NE | CARLIN | ATLANTIC | COUNTY | CITY | 6/13/2011 | 1866 | 301-3 | COUNTY | CITY | Annually |
| ARS & CPS | NW | ATLANTIC | CARLIN | COUNTY | CITY | 6/13/2011 | 1866 | 300-3 | COUNTY | CITY | Annually |
| CPS | SE | CLARK | ATLANTIC | COUNTY | CITY | 6/13/2011 | 1866 | 300-3 | COUNTY | CITY | Annually |
| CPS | NE | CLARK | ATLANTIC | COUNTY | CITY | 6/13/2011 | 1866 | 301-3 | COUNTY | CITY | Annually |
| ARS & CPS | NE | ATLANTIC | CLARK | COUNTY | CITY | 6/13/2011 | 1866 | 300-3 | COUNTY | CITY | Annually |
| TOTAL | ARS & CPS | | 331 | | | | | | | | |
| | CPS ONLY | | 248 | | | | | | | | |
| | ARS | | 29 | | | | | | | | |
| | NONE | | 20 | | | | | | | | |
| Notations: | | | | | | | | | | | |

| Col. 1 | Col. 2 | Col. 3 | Col. 4 | Col. 5 | Col. 6 | Col. 7 | Col. 8 | Col. 9 | Col. 10 | Col. 11 |
|----------------------------|---|----------------------|-----------|-------------------|-----------------------|-------------------------|---------|----------|------------------|---|
| Certified FCD(s) Installed | FCD Location | Nearest Cross Street | FCD Owner | FCD Maintained By | FCD Installation Date | CB ID No. Served by FCD | CB Type | CB Owner | CB Maintained By | Frequency of FCD Maintenance and other O&M comments |
| Form | Insert additional rows, as necessary | | | | | | | | | |
| Column 1: | Indicate certified full capture device (FCD) installed | | | | | | | | | |
| Column 2: | Name FCD street location and indicate whether: WS - west side; ES - east side; NS - north side; SS - south side | | | | | | | | | |
| Column 3: | Name the nearest cross street location of the FCD | | | | | | | | | |
| Column 4: | FCD Owned by: Co - County of L.A.; Flood - L.A. County Flood Control District; Ci - City; Ca - Caltrans; Pr - Private; Oth - Others | | | | | | | | | |
| Column 5: | FCD Maintained by: Co - County of L.A.; Flood - L.A. County Flood Control District; Ci - City; Ca - Caltrans; Pr - Private; Oth - Others | | | | | | | | | |
| Column 6: | Provide the date when FCD was installed | | | | | | | | | |
| Column 7: | Indicate County or City assigned catch basin (CB) identification (ID) numbers | | | | | | | | | |
| Column 8: | Type of CB based on Standard Plan for Public Works Construction from Greenbook Committee, Public Works Standards, Inc. (i.e., 300-2; 301-2; 302-2; 303-2; e | | | | | | | | | |
| Column 9: | CB Owned by: Co - County of L.A.; Flood - L.A. County Flood Control District; Ci - City; Ca - Caltrans; Pr - Private; Oth - Others | | | | | | | | | |
| Column 10: | CB maintained by: Co - County of L.A.; Flood - L.A. County Flood Control District; Ci - City; Ca - Caltrans; Pr - Private; Oth - Others | | | | | | | | | |
| Column 11: | Indicate frequency of FCD maintenance (e.g. inspection & cleanout: 1x/3 mo., 1x/6 mo., 1x Nov., 1x Jan., 1x Aug., etc.) | | | | | | | | | |