

APPENDIX B. FECAL COLIFORM DATA ANALYSIS

Staff analyzed water quality data using a program developed by Tetra Tech, the United States Environmental Protection Agencies' contractor. The program is titled "Fecal Coliform Investigation and Analysis Spreadsheet (FECIA)." FECIA is a fully automated spreadsheet designed to assist in characterization and quantification of fecal coliform instream water quality objective¹ exceedances. Data are compared against water quality objectives or criteria to determine magnitude and frequency of exceedances. The FECIA program generated the data analysis figures and tables within this section.

All figures in Appendix B show the REC-1 geometric mean water quality objective or criteria, concentration ranges, range of concentrations within the 25th -75th percentile range, mean concentration, and median concentration.

All tables in Appendix B provide summary statistics of the figures. The table displays statistical data on a monthly basis. The table shows the mean, the median, the minimum, the maximum, the 25th percent deviation, the 75th percent deviation, the number of exceedances of the water contact recreation water quality objective or criteria versus the sample count (XS:Count), and the percent sample exceedance (XS%) of the water quality objective or criteria. Note that when the table analyzed geometric means, the column entitled "mean" is actually the "mean of the geometric mean." The mean value for the maximum water quality objective or criterion is the actual mean value of the samples collected.

San Lorenzo River Estuary at Trestle (003)

Geometric Mean Water Quality Objective (200 MPN/100 mL)

Figure 1 shows monthly fecal coliform concentrations for the San Lorenzo River Estuary at the Trestle from 1/4/2000 to 6/27/2006. Fecal coliform mean values are below the water quality objective in January, February and May. All other months of the year the mean concentrations exceed the water quality objective.

¹ Or *E.coli* water quality criteria

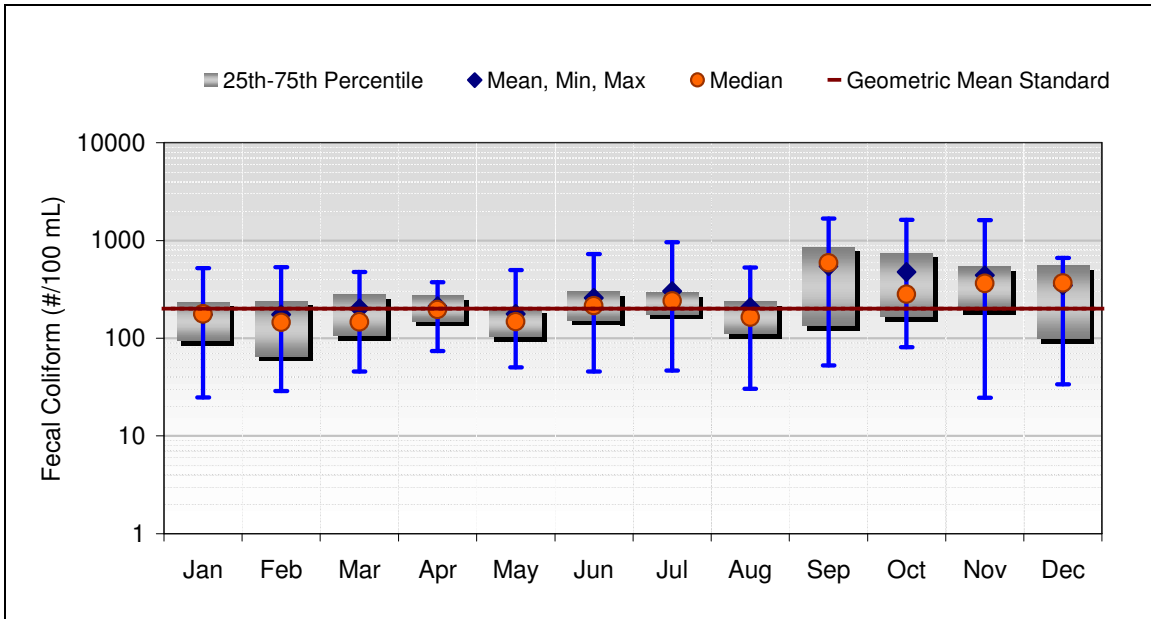


Figure 1. San Lorenzo River Estuary Fecal Coliform at Trestle (#/100 mL) and Water Contact Recreation Geometric Mean Water Quality Objective (January 4, 2000 – June 27, 2006)

Table 1 below provides summary statistics of the above figure. Overall, the water quality objective was exceeded 50% of the time. The least violations occur in May and the greatest numbers of violations occur in October. There is no seasonal water quality trend.

Table 1. San Lorenzo River Estuary Fecal Coliform at Trestle Data Summary (#/100 mL) and Exceedance of Water Contract Recreation Geometric Mean Water Quality Objective

Summary Statistics (Data: 1/4/2000 to 6/27/2006)								
Month	Mean	Median	Min	Max	25th	75th	XS:Count	XS%
Jan	175	178	25	522	92	235	10:25	40%
Feb	175	144	29	532	65	239	9:26	35%
Mar	202	147	45	474	106	282	13:33	39%
Apr	214	196	74	374	150	271	15:32	47%
May	177	148	50	498	103	203	7:25	28%
Jun	257	215	46	728	152	301	14:27	52%
Jul	303	241	47	955	177	290	17:26	65%
Aug	208	165	30	529	110	238	10:27	37%
Sep	545	590	52	1669	134	865	13:23	57%
Oct	475	280	81	1620	164	753	18:25	72%
Nov	441	363	25	1609	194	538	20:28	71%
Dec	347	367	34	662	97	557	18:28	64%
All Data	288	207	25	1669	127	357	164:325	50%

Maximum Water Quality Objective (400 MPN/100 mL)

Figure 2 below shows monthly fecal coliform concentrations for San Lorenzo River Estuary at the Trestle from 1/4/2000 to 6/27/2006. Mean concentrations exceed the water quality objective in all months except January and April.

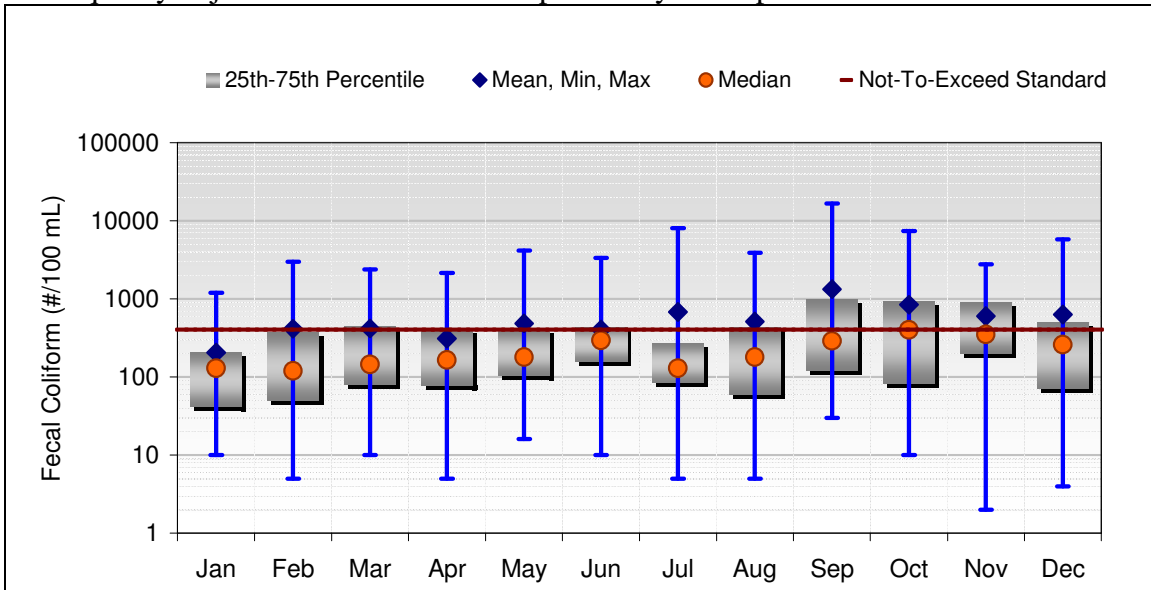


Figure 2. San Lorenzo River Estuary Fecal Coliform at Trestle (#/100 mL) and Water Contact Maximum Water Quality Objective (January 4, 2000 through June 27, 2006)

Table 2 below provides summary statistics of the above figure. Overall, the quality objective was exceeded 29% of the time with no seasonal trend.

Table 2. San Lorenzo River Estuary Fecal Coliform at Trestle Data Summary (#/100 mL) and Exceedance of Water Contract Recreation Maximum Water Quality Objective

Summary Statistics (Data: 1/4/2000 to 6/27/2006)								
Month	Mean	Median	Min	Max	25th	75th	XS:Count	XS%
Jan	205	130	10	1200	42	210	3:31	10%
Feb	414	120	5	2976	50	378	8:31	26%
Mar	419	145	10	2380	80	453	9:32	28%
Apr	311	165	5	2150	78	415	8:32	25%
May	484	180	16	4170	105	415	7:26	27%
Jun	405	295	10	3350	160	438	9:32	28%
Jul	679	130	5	8040	85	275	4:27	15%
Aug	513	180	5	3910	60	440	8:29	28%
Sep	1331	290	30	16632	123	1006	11:26	42%
Oct	844	400	10	7420	84	950	14:29	48%
Nov	601	350	2	2780	200	910	10:27	37%
Dec	631	260	4	5760	72	510	12:29	41%
All Data	555	200	2	16632	80	490	103:351	29%

San Lorenzo River Estuary at Broadway/Laurel Street Bridge (006)

Geometric Mean Water Quality Objective (200 MPN/100 mL)

Figure 3 below shows monthly fecal coliform concentrations for San Lorenzo River Estuary at the Broadway/Laurel Street from 1/4/2000 to 6/27/2006. Mean concentrations exceed the water quality objective in all months except for May.

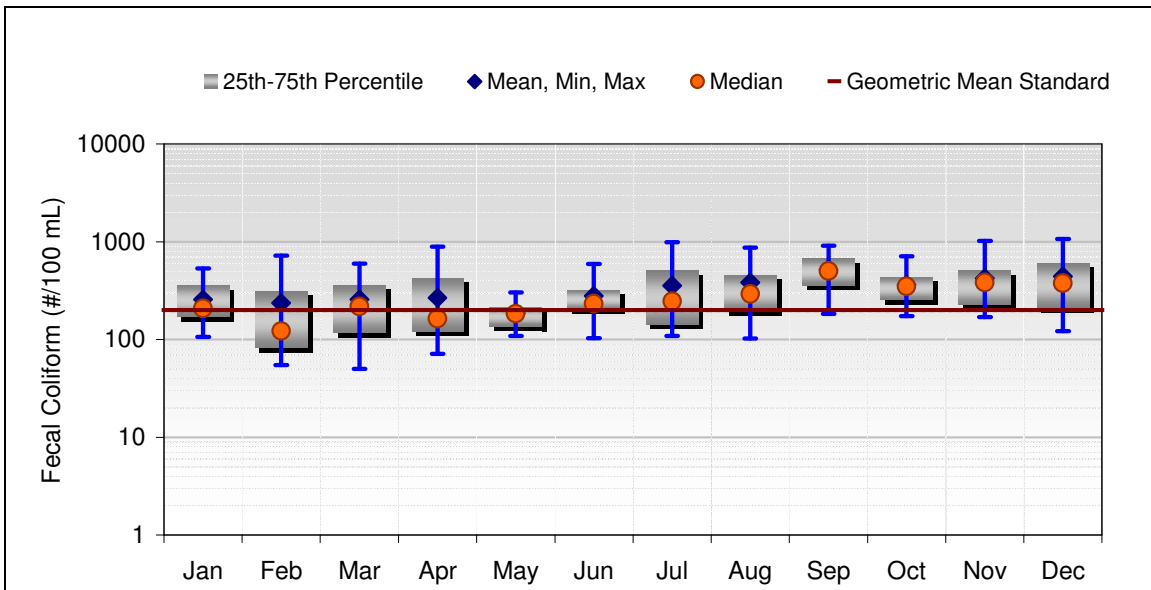


Figure 3. San Lorenzo River Estuary Fecal Coliform at Broadway/Laurel Bridge (#/100 mL) and Water Contact Recreation Geometric Mean Water Quality Objective (January 4, 2000 through June 27, 2006)

Table 3 below provides summary statistics of the above figure. Overall, the water quality objective was exceeded 63% of the time with no apparent seasonal trend.

Table 3. San Lorenzo River Estuary Fecal Coliform at Broadway/Laurel Street Bridge Data Summary (#/100 mL) and Exceedance of Water Contract Recreation Geometric Mean Water Quality Objective

Summary Statistics (Data: 1/4/2000 to 6/27/2006)								
Month	Mean	Median	Min	Max	25th	75th	XS:Count	XS%
Jan	257	209	106	534	172	362	11:21	52%
Feb	235	123	55	724	82	314	9:23	39%
Mar	258	218	50	598	116	365	15:28	54%
Apr	268	164	72	895	122	427	11:29	38%
May	186	185	108	305	137	214	9:21	43%
Jun	281	233	104	593	204	321	17:23	74%
Jul	357	247	109	994	143	506	13:23	57%
Aug	383	293	103	870	198	460	16:22	73%
Sep	523	504	183	917	359	673	19:20	95%
Oct	363	350	174	711	254	435	19:22	86%
Nov	423	384	171	1016	225	507	19:24	79%
Dec	442	379	121	1068	209	607	21:27	78%
All Data	330	256	50	1068	171	438	179:283	63%

Maximum Water Quality Objective (400 MPN/100 mL)

Figure 4 below shows monthly fecal coliform concentrations for San Lorenzo River Estuary at the Broadway/Laurel Street Bridge from 1/4/2000 to 6/27/2006. Mean concentrations exceed the water quality objective in all months except January, April, May and June.

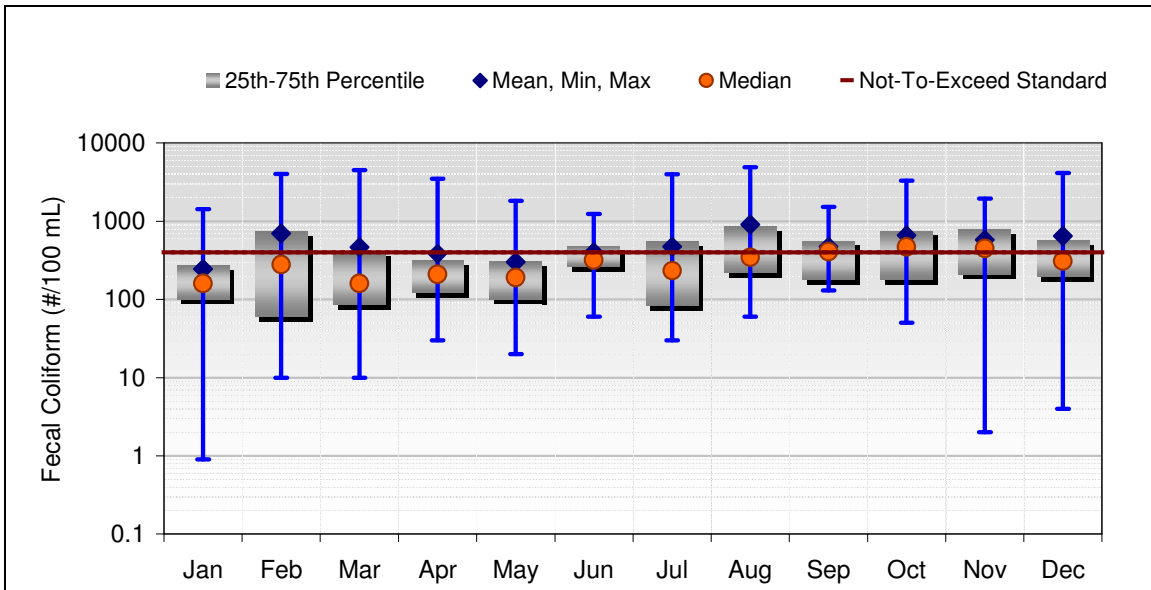


Figure 4. San Lorenzo River Estuary Fecal Coliform at Broadway/Laurel Street Bridge (#/100 mL) and Water Contact Maximum Water quality Objective (January 4, 2000 through June 27, 2006)

Table 4 below provides summary statistics of the above figure. Overall, the water quality objective was exceeded 35% of the time. There is no seasonal trend.

Table 4. San Lorenzo River Estuary Fecal Coliform at Broadway/Laurel Street Bridge Data Summary (#/100 mL) and Exceedance of Water Contract Recreation Maximum Water Quality Objective

Summary Statistics (Data: 1/4/2000 to 6/27/2006)								
Month	Mean	Median	Min	Max	25th	75th	XS:Count	XS%
Jan	246	160	1	1430	100	268	6:30	20%
Feb	700	280	10	4000	60	730	9:27	33%
Mar	465	160	10	4498	85	405	8:31	26%
Apr	384	210	30	3490	123	315	6:30	20%
May	303	190	20	1820	100	310	5:25	20%
Jun	399	320	60	1250	260	480	10:29	34%
Jul	471	232	30	3970	83	553	8:26	31%
Aug	907	345	60	4900	222	855	12:26	46%
Sep	472	410	130	1530	177	558	12:24	50%
Oct	659	470	50	3300	180	760	14:25	56%
Nov	583	450	2	1940	210	780	15:26	58%
Dec	647	310	4	4150	195	575	10:27	37%
All Data	514	267	1	4900	130	538	115:326	35%

San Lorenzo River Fecal Coliform at Soquel Avenue Bridge (009)

Geometric Mean Objective (200 MPN/100 mL)

There are not enough water quality data at the Soquel Avenue Bridge station to calculate the geometric mean (No months have the minimum of five samples needed to calculate the geometric mean). The most recent data available is from 11/24/86 to 02/19/97.

Maximum Objective (400 MPN/100 mL)

Figure 5 shows monthly fecal coliform concentrations for San Lorenzo River Estuary at the Soquel Avenue Bridge from 11/24/1986 to 02/19/1997. The mean concentrations exceed the water quality objective in January, April-May, August, and October through December.

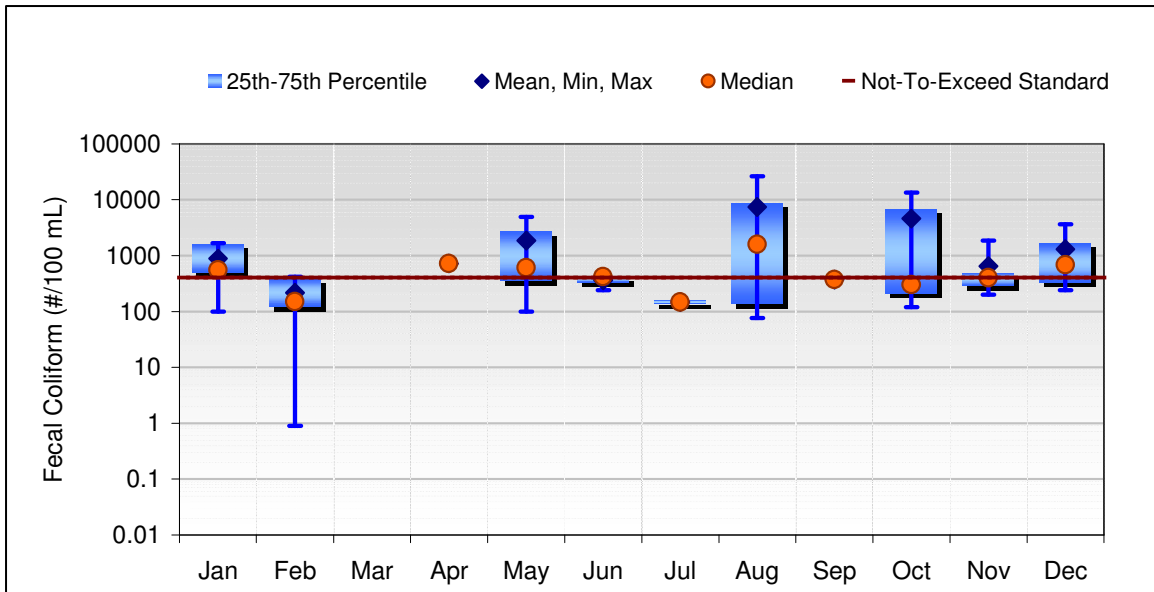


Figure 5. San Lorenzo River Estuary Fecal Coliform at Soquel Avenue Bridge Data Summary (#/100 mL) and Exceedance of Water Contract Recreation Maximum Water Quality Objective (11/24/1986 to 2/19/1997)

Table 5 below provides summary statistics of the above figure. Overall, the water quality objective was exceeded 47% of the time. There is no seasonal trend.

Table 5. San Lorenzo River Estuary Fecal Coliform at Soquel Avenue Bridge Data Summary (#/100 mL) and Exceedance of Water Contact Recreation Maximum Objective

Summary Statistics (Data: 11/24/1986 to 2/19/1997)								
Month	Mean	Median	Min	Max	25th	75th	XS:Count	XS%
Jan	882	550	100	1660	500	1600	4:5	80%
Feb	217	150	1	420	120	392	1:5	20%
Mar	0	0	0	0	0	0	0:0	n/a
Apr	720	720	720	720	720	720	1:1	100%
May	1868	604	100	4900	352	2752	2:3	67%
Jun	360	420	240	420	330	420	2:3	67%
Jul	147	147	125	168	136	157	0:2	0%
Aug	7416	1593	76	26400	136	8873	2:4	50%
Sep	370	370	370	370	370	370	0:1	0%
Oct	4573	300	120	13300	210	6800	1:3	33%
Nov	646	400	200	1850	290	490	2:5	40%
Dec	1308	685	240	3620	330	1663	2:4	50%
All Data	1817	396	1	26400	165	793	17:36	47%

Branciforte Creek at San Lorenzo River (010)

Geometric Mean Water Quality Objective (200 MPN/100 mL)

There are not enough water quality data at the Branciforte Creek station upstream of the San Lorenzo River to calculate geometric means. The most recent data available is from 04/11/95 to 6/15/2006. No months have the minimum of five samples needed to calculate geometric means.

Maximum Water Quality Objective (400 MPN/100 mL)

Figure 6 below shows monthly fecal coliform concentrations for Branciforte Creek at the San Lorenzo River confluence from 04/11/1995 to 6/15/2006. Mean concentrations exceed the water quality objective almost every month except for March, April and July (March and July only had one sample).

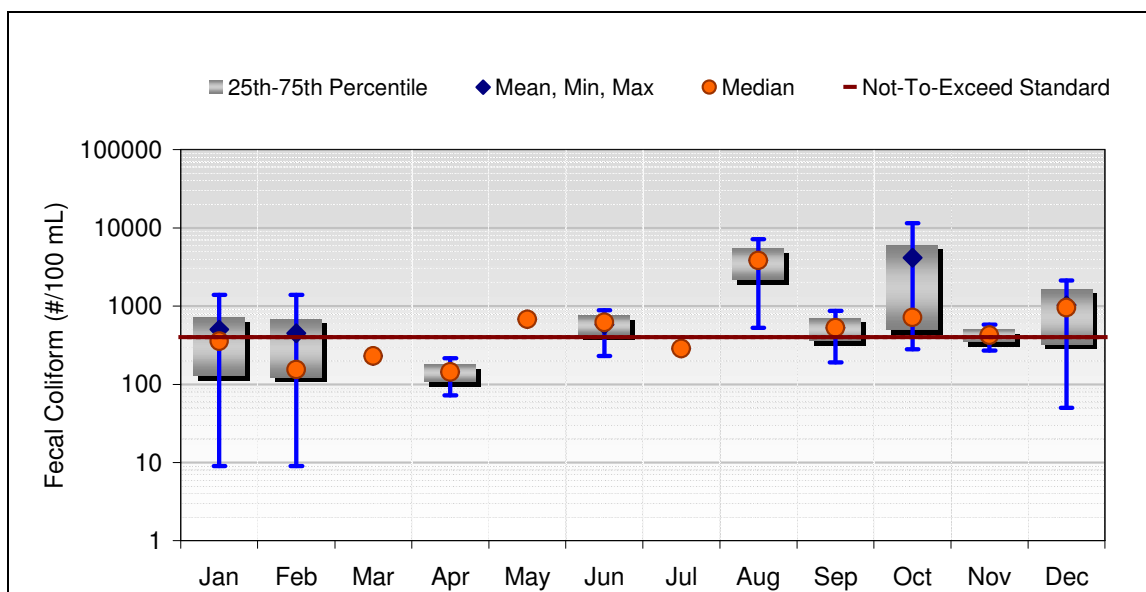


Figure 6. Branciforte Creek at San Lorenzo River Fecal Coliform (#/100 mL) and Water Contact Recreation Maximum Water Quality Objective (April 11, 1995 – June 15, 2006)

Table 6 below provides summary statistics of the above figure. Overall, the water quality objective was exceeded 52% of the time. There is no seasonal trend.

Table 6. Branciforte Creek Fecal Coliform at San Lorenzo River Data Summary (#/100 mL) and Exceedance of Water Contact Recreation Maximum Objective

Summary Statistics (Data: 4/11/1995 to 6/15/2006)									
Month	Mean	Median	Min	Max	25th	75th	XS:Count	XS%	
Jan	502	355	9	1390	130	723	3:6	50%	
Feb	450	155	9	1400	123	690	2:6	33%	
Mar	230	230	230	230	230	230	0:1	0%	
Apr	144	144	72	216	108	180	0:2	0%	
May	680	680	680	680	680	680	1:1	100%	
Jun	580	620	230	890	425	755	2:3	67%	
Jul	288	288	288	288	288	288	0:1	0%	
Aug	3849	3849	528	7170	2189	5510	2:2	100%	
Sep	530	530	190	870	360	700	1:2	50%	
Oct	4173	720	280	11520	500	6120	2:3	67%	
Nov	425	425	270	580	348	503	1:2	50%	
Dec	1025	955	50	2140	328	1653	3:4	75%	
All Data	1066	420	9	11520	190	860	17:33	52%	

Branciforte Creek at Carbonera (0120)

Geometric Mean Water Quality Objective (200 MPN/100 mL)

There are not enough water quality data at the Branciforte Creek station upstream of the confluence with Carbonera Creek to calculate the geometric mean. The most recent data available is from 9/20/1995 to 1/24/2002. No months have the minimum of five samples needed to calculate geometric means.

Maximum Water Quality Objective (400 MPN/100 mL)

Figure 7 below shows monthly fecal coliform concentrations for Branciforte Creek at the Carbonera Creek confluence from 9/20/1995 to 1/24/2002. (This is the most recent data available.) The means did not exceed the water quality objective. However, as show in the figure below, there are not enough data to determine impairment conditions, because there are only seven samples for this timeframe.

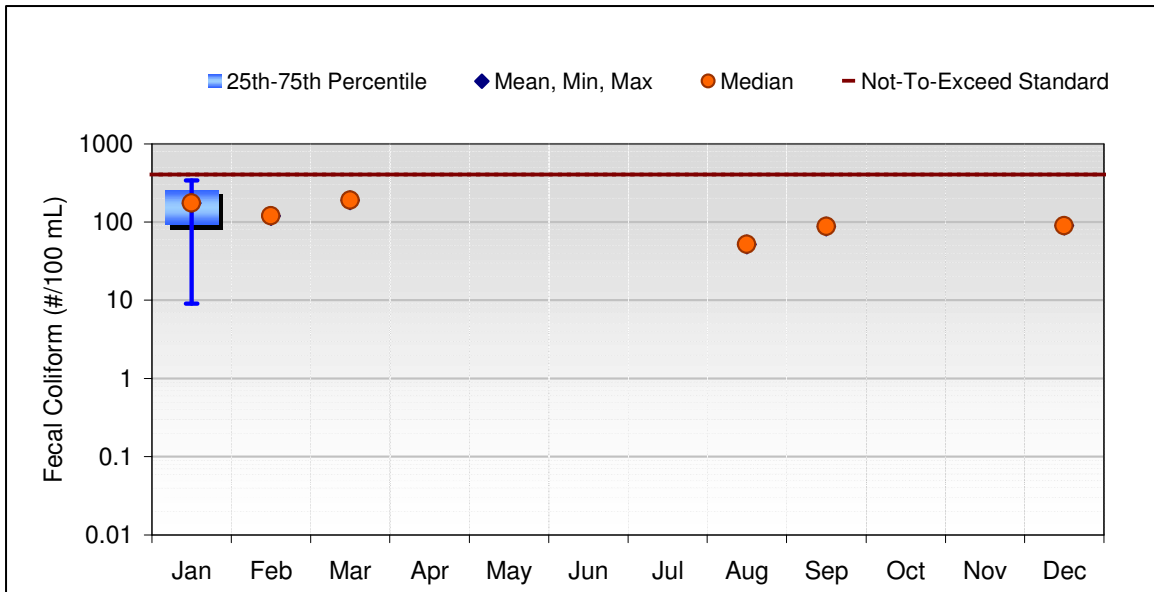


Figure 7. Branciforte Creek Fecal Coliform at San Lorenzo River Data Summary (#/100 mL) and Exceedance of Water Contact Recreation Maximum Objective (September 20, 1995 – January 24, 2002)

Table 7 provides summary statistics of the above figure. This station never exceeded water quality objectives.

Table 7. Branciforte Creek Fecal Coliform at Carbonera Creek Data Summary (#/100 mL) and Exceedance of Water Contact Recreation Maximum Objective

Summary Statistics (Data: 9/20/1995 to 1/24/2002)								
Month	Mean	Median	Min	Max	25th	75th	XS:Count	XS%
Jan	175	175	9	340	92	257	0:2	0%
Feb	120	120	120	120	120	120	0:1	0%
Mar	190	190	190	190	190	190	0:1	0%
Apr	0	0	0	0	0	0	0:0	n/a
May	0	0	0	0	0	0	0:0	n/a
Jun	0	0	0	0	0	0	0:0	n/a
Jul	0	0	0	0	0	0	0:0	n/a
Aug	52	52	52	52	52	52	0:1	0%
Sep	88	88	88	88	88	88	0:1	0%
Oct	0	0	0	0	0	0	0:0	n/a
Nov	0	0	0	0	0	0	0:0	n/a
Dec	90	90	90	90	90	90	0:1	0%
All Data	127	90	9	340	70	155	0:7	0%

Branciforte Creek at Isbel Drive (0121)

Geometric Mean Water Quality Objective (200 MPN/100 mL)

There are not enough water quality data at the Isbel Drive station to calculate the geometric mean. The most recent data available is from 2/9/2000 to 6/15/2006. No months have the minimum of five samples needed to calculate geometric means.

Maximum Water Quality Objective (400 MPN/100 mL)

Figure 8 below shows monthly fecal coliform concentrations for Branciforte Creek at Isbel Drive from 2/9/2000 to 6/15/2006. The mean concentration exceeded the objective in April and October.

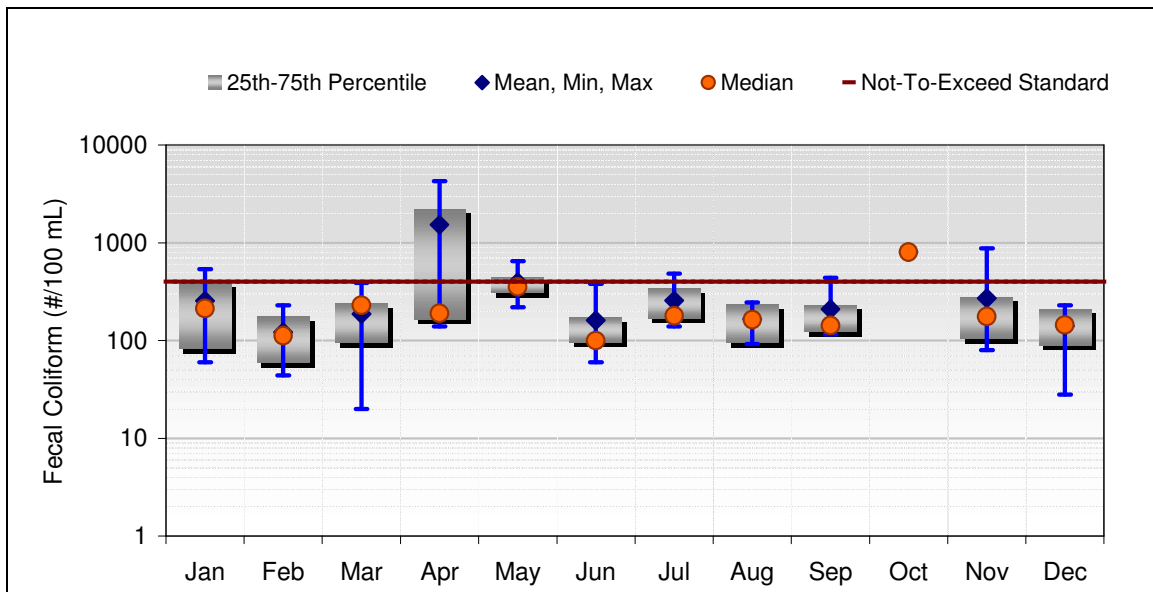


Figure 8. Branciforte Creek at Isbel Drive Fecal Coliform (#/100 mL) and Water Contact Recreation Maximum Water Quality Objective (February 9, 2000 – June 15, 2006)

Table 8 below provides summary statistics of the above figure. Overall, the water quality objective was exceeded 14% of the time. There is no seasonal trend.

Table 8. Branciforte Creek Fecal Coliform at Isbel Drive Data Summary (#/100 mL) and Exceedance of Water Contact Recreation Maximum Objective

Summary Statistics (Data: 2/9/2000 to 6/15/2006)									
Month	Mean	Median	Min	Max	25th	75th	XS:Count	XS%	
Jan	254	213	60	540	83	399	2:6	33%	
Feb	122	112	44	230	59	175	0:7	0%	
Mar	187	230	20	390	95	240	0:7	0%	
Apr	1535	190	140	4275	165	2233	1:3	33%	
May	395	355	220	650	310	440	1:4	25%	
Jun	162	100	60	380	96	172	0:5	0%	
Jul	257	179	140	485	170	340	1:6	17%	
Aug	166	164	92	245	95	235	0:4	0%	
Sep	210	143	116	440	123	230	1:4	25%	
Oct	805	805	805	805	805	805	1:1	100%	
Nov	272	176	80	880	105	280	1:7	14%	
Dec	141	145	28	230	90	210	0:5	0%	
All Data	291	172	20	4275	96	293	8:59	14%	

San Lorenzo River at Sycamore Grove (022)

Geometric Mean Objective (200 MPN/100 mL)

Figure 9 below shows monthly fecal coliform concentrations for San Lorenzo River at the Sycamore Grove station from 1/4/2000 to 1/25/2006. The mean concentrations do not exceed the water quality objective.

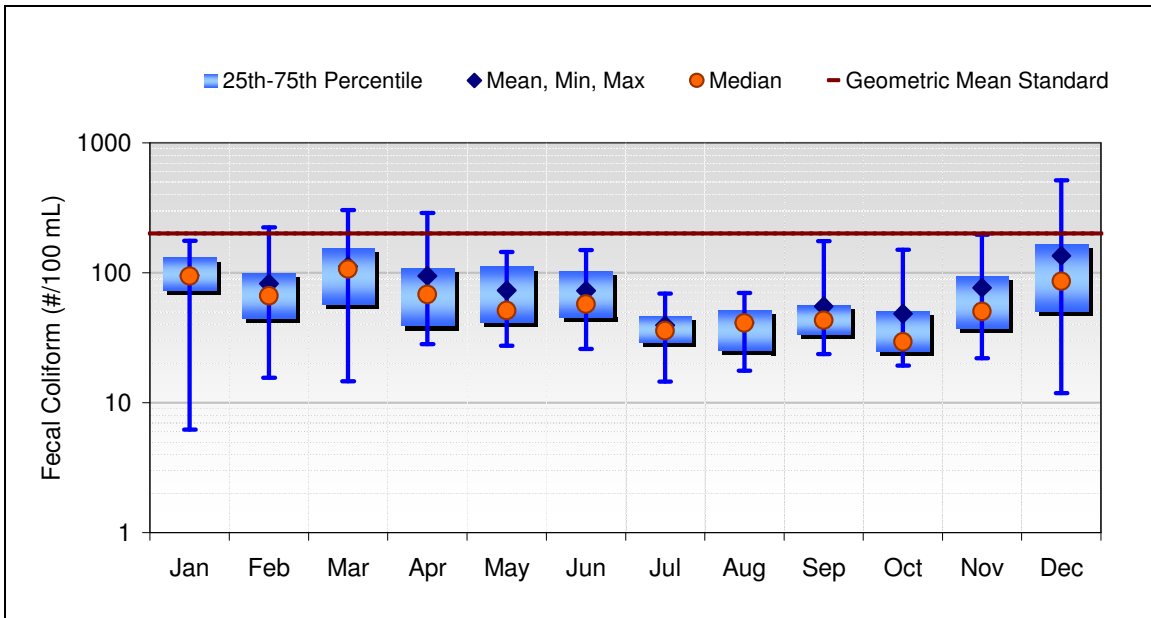


Figure 9. San Lorenzo River Fecal Coliform at Sycamore Grove (#/100 mL) and Water Contact Recreation Geometric Mean Water Quality Objective (January 4, 2000 – January 25, 2006)

Table 9 below provides summary statistics of the above figure. Overall, the water quality objective was exceeded only 4% of the time.

Table 9. San Lorenzo River Fecal Coliform at Sycamore Grove Data Summary (#/100 mL) and Exceedance of Water Contact Recreation Geometric Mean Objective

Summary Statistics (Data: 1/4/2000 to 1/25/2006)								
Month	Mean	Median	Min	Max	25th	75th	XS:Count	XS%
Jan	96	94	6	176	74	131	0:30	0%
Feb	83	67	16	224	45	100	1:33	3%
Mar	112	107	15	303	58	156	2:31	6%
Apr	95	68	28	290	39	109	5:31	16%
May	73	51	27	145	42	112	0:27	0%
Jun	73	57	26	150	46	103	0:32	0%
Jul	39	36	15	69	29	47	0:32	0%
Aug	41	41	18	70	25	52	0:32	0%
Sep	55	43	24	175	34	56	0:31	0%
Oct	48	29	19	150	25	51	0:30	0%
Nov	77	51	22	197	37	94	0:30	0%
Dec	136	86	12	516	50	167	6:31	19%
All Data	77	54	6	516	35	101	14:370	4%

Maximum Water Quality Objective (400 MPN/100 mL)

Figure 10 shows monthly fecal coliform concentrations for San Lorenzo River at Sycamore Grove station from 1/4/2000 to 1/25/2006. Mean concentrations do not exceed the water quality objective.

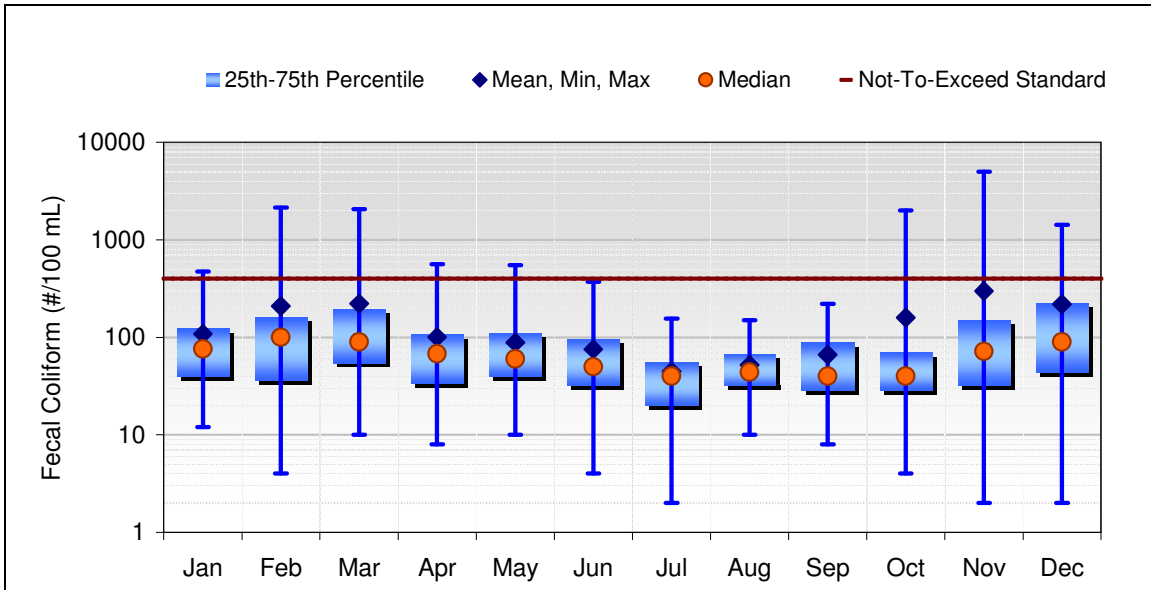


Figure 10. San Lorenzo River Fecal Coliform at Sycamore Grove (#/100 mL) and Water Contact Maximum Water Quality Objective (January 4, 2000 – January 25, 2006)

Table 10 below provides summary statistics of the above figure. Overall, the water quality objective was exceeded only 5% of the time.

Table 10. San Lorenzo River Fecal Coliform at Sycamore Grove Data Summary (#/100 mL) and Exceedance of Water Contact Recreation Maximum Objective

Summary Statistics (Data: 1/4/2000 to 1/25/2006)								
Month	Mean	Median	Min	Max	25th	75th	XS:Count	XS%
Jan	108	76	12	472	40	123	2:39	5%
Feb	209	100	4	2140	36	160	3:29	10%
Mar	222	90	10	2070	55	195	2:31	6%
Apr	101	68	8	560	34	108	2:30	7%
May	89	60	10	550	40	110	1:29	3%
Jun	76	50	4	370	32	96	0:32	0%
Jul	44	40	2	156	20	56	0:33	0%
Aug	52	44	10	150	32	67	0:31	0%
Sep	66	40	8	220	29	88	0:30	0%
Oct	159	40	4	2000	29	70	2:31	6%
Nov	298	72	2	5000	32	150	3:29	10%
Dec	219	90	2	1430	44	225	4:31	13%
All Data	135	60	2	5000	32	110	19:375	5%

San Lorenzo River at Big Trees (060)

Geometric Mean Objective (200 MPN/100 mL)

Figure 11 below shows monthly fecal coliform concentrations for San Lorenzo River at the Big Trees station from 1/4/2000 to 1/23/2006. The mean concentrations exceeded the water quality objective in November and December.

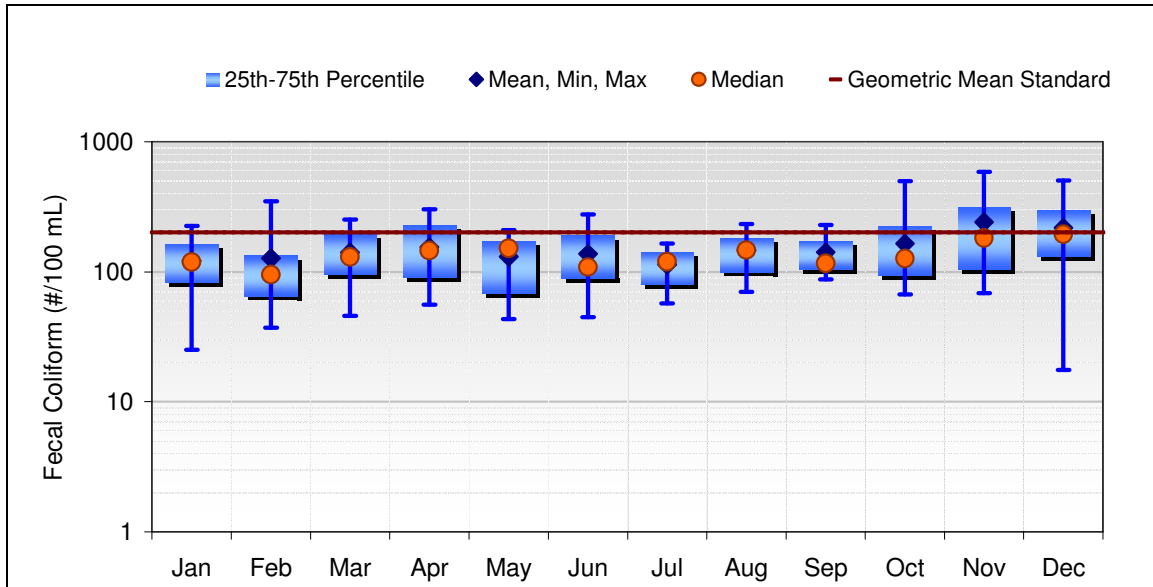


Figure 11. San Lorenzo River Fecal Coliform at Big Trees (#/100 mL) and Water Contact Recreation Geometric Mean Water Quality Objective (January 4, 2000 – January 23, 2006)

Table 11 below provides summary statistics of the above figure. Overall, the water quality objective was exceeded 24% of the time.

Table 11. San Lorenzo River Fecal Coliform at Big Trees Data Summary (#/100 mL) and Exceedance of Water Contact Recreation Geometric Mean Objective

Summary Statistics (Data: 1/4/2000 to 1/23/2006)								
Month	Mean	Median	Min	Max	25th	75th	XS:Count	XS%
Jan	122	119	25	226	83	164	3:26	12%
Feb	127	95	37	349	66	134	5:20	25%
Mar	141	130	46	253	95	197	6:25	24%
Apr	155	146	56	302	91	227	10:28	36%
May	131	152	43	209	69	173	2:24	8%
Jun	137	109	45	275	90	191	5:25	20%
Jul	114	120	57	165	80	142	0:25	0%
Aug	147	147	70	234	100	183	6:27	22%
Sep	141	116	88	229	106	173	3:17	18%
Oct	165	127	67	498	95	226	7:22	32%
Nov	241	182	68	589	105	314	13:28	46%
Dec	219	195	18	504	133	298	12:27	44%
All Data	155	133	18	589	92	198	72:294	24%

Maximum Water Quality Objective (400 MPN/100 mL)

Figure 12 shows monthly fecal coliform concentrations for San Lorenzo River at Big Trees station from 1/4/2000 to 1/23/2006. Mean concentrations do not exceed the water quality objective.

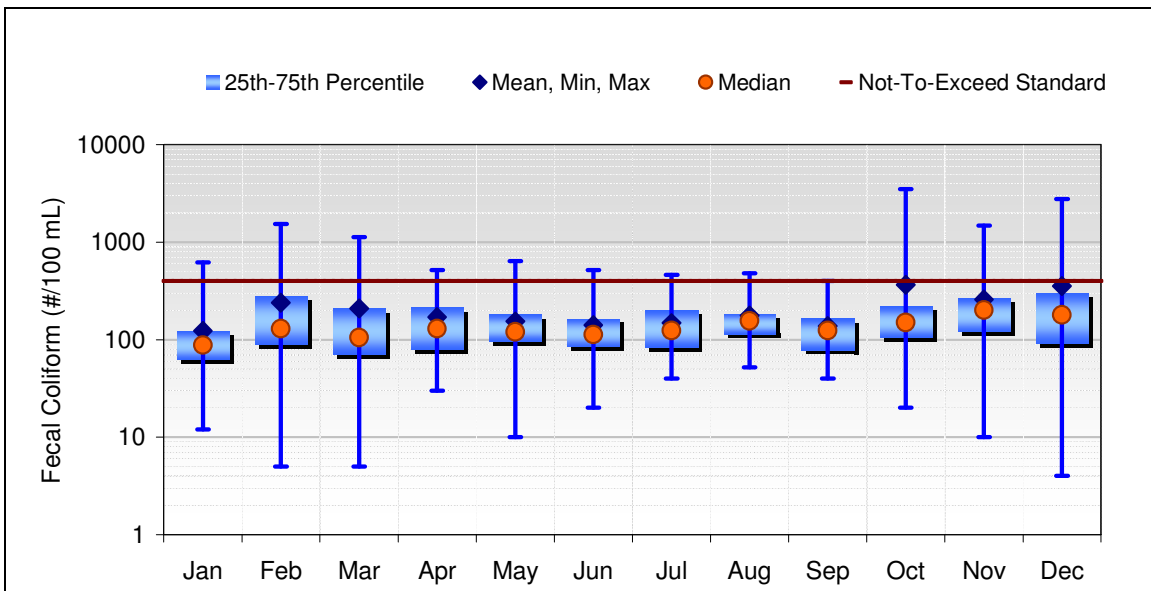


Figure 12. San Lorenzo River Fecal Coliform at Big Trees (#/100 mL) and Water Contact Maximum Water Quality Objective (January 4, 2000 – January 23, 2006)

Table 12 below provides summary statistics of the above figure. Overall, the water quality objective was exceeded 10% of the time.

Table 12. San Lorenzo River Fecal Coliform at Big Trees Data Summary (#/100 mL) and Exceedance of Water Contact Recreation Maximum Objective

Summary Statistics (Data: 1/4/2000 to 1/23/2006)								
Month	Mean	Median	Min	Max	25th	75th	XS:Count	XS%
Jan	124	88	12	620	63	122	1:32	3%
Feb	240	130	5	1530	90	280	4:23	17%
Mar	209	105	5	1130	72	210	3:28	11%
Apr	170	130	30	520	80	215	2:27	7%
May	154	120	10	640	98	181	1:24	4%
Jun	141	113	20	520	86	164	2:26	8%
Jul	148	124	40	464	84	200	1:29	3%
Aug	177	156	52	480	115	182	2:27	7%
Sep	138	124	40	400	79	165	0:24	0%
Oct	366	150	20	3492	106	219	6:28	21%
Nov	257	201	10	1480	122	265	4:26	15%
Dec	355	180	4	2770	92	300	5:28	18%
All Data	207	128	4	3492	84	200	31:322	10%

Lompico Creek at Carrol Avenue (07528)

Geometric Mean Objective (200 MPN/100 mL)

There are not enough water quality data at the Lompico Creek station at Carrol Avenue to calculate the geometric mean. The most recent data available is from 2/2/2000 – 1/12/006. No months have the minimum of five samples needed to calculate geometric means.

Maximum Water Quality Objective (400 MPN/100 mL)

Figure 13 shows monthly fecal coliform concentrations for Lompico Creek at Carrol Avenue station from 2/2/2000 – 1/12/2006. Mean concentrations exceed the water quality objective in June and August.

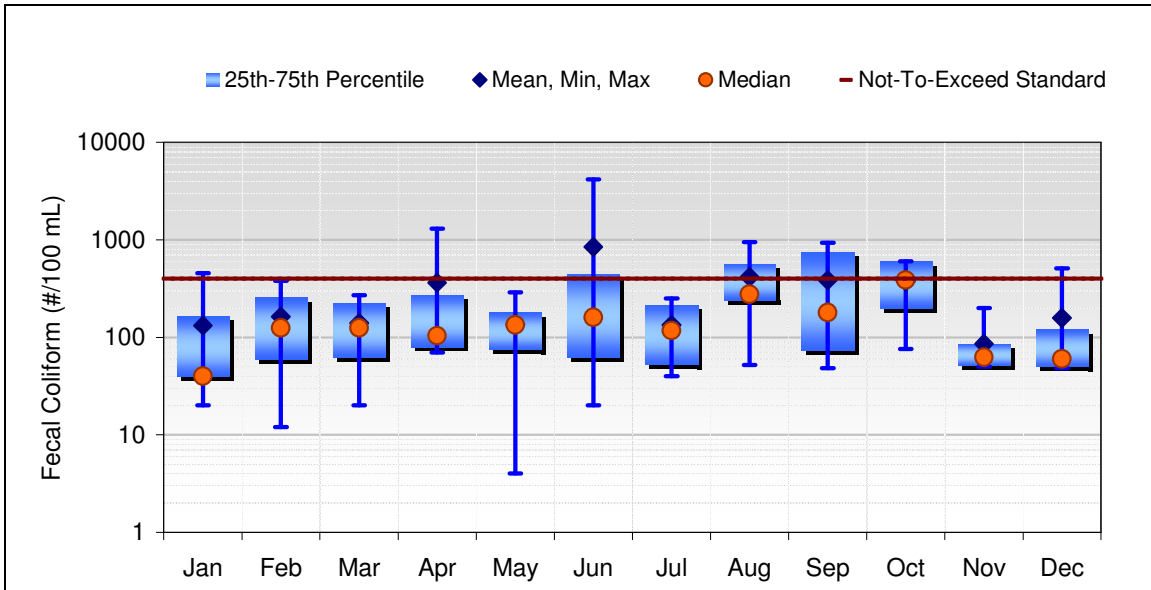


Figure 13. Lompico Creek Fecal Coliform at Carrol Avenue (#/100 mL) and Water Contact Maximum Water Quality Objective (February 2, 2000 – January 12, 2006)

Table 13 below provides summary statistics of the above figure. Overall, the water quality objective was exceeded 16% of the time.

Table 13. Lompico Creek Fecal Coliform at Carrol Avenue Data Summary (#/100 mL) and Exceedance of Water Contact Recreation Maximum Objective

Summary Statistics (Data: 2/2/2000 to 1/12/2006)								
Month	Mean	Median	Min	Max	25th	75th	XS:Count	XS%
Jan	132	40	20	455	40	165	1:7	14%
Feb	163	125	12	380	60	256	0:6	0%
Mar	140	125	20	270	63	225	0:6	0%
Apr	365	104	70	1300	80	270	1:5	20%
May	135	134	4	290	75	180	0:6	0%
Jun	848	160	20	4180	63	445	2:6	33%
Jul	134	117	40	250	53	216	0:6	0%
Aug	416	276	52	947	240	564	2:5	40%
Sep	385	180	48	930	73	748	2:6	33%
Oct	373	388	76	600	200	600	2:5	40%
Nov	86	63	50	200	51	85	0:6	0%
Dec	158	60	48	510	50	120	1:5	20%
All Data	273	120	4	4180	50	270	11:69	16%

San Lorenzo River at Highlands Park (149)

Geometric Mean Objective (200 MPN/100 mL)

Figure 14 below shows monthly fecal coliform concentrations for San Lorenzo River at the Highlands Park station from 2/15/2000 to 9/6/2005. The mean concentrations do not exceed the water quality objective.

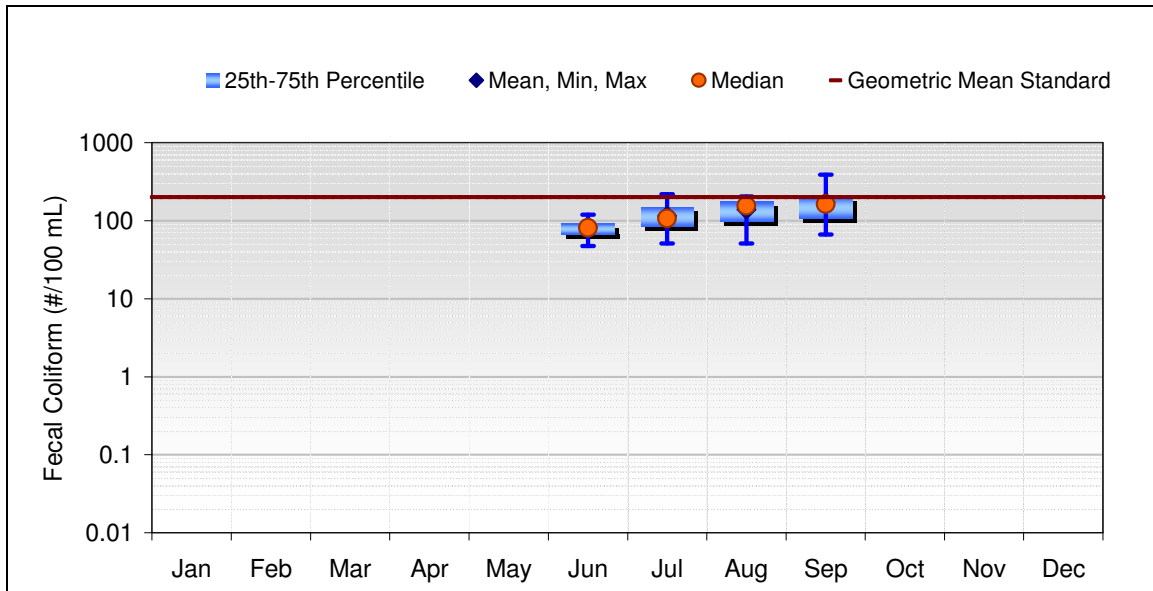


Figure 14. San Lorenzo River Fecal Coliform at Highlands Park (#/100 mL) and Water Contact Recreation Geometric Mean Water Quality Objective (February 15, 2000 – September 6, 2005)

Table 14 below provides summary statistics of the above figure. Overall, the water quality objective was exceeded 11% of the time.

Table 14. San Lorenzo River Fecal Coliform at Highlands Park Data Summary (#/100 mL) and Exceedance of Water Contact Recreation Geometric Mean Objective

Summary Statistics (Data: 2/15/2000 to 9/6/2005)									
Month	Mean	Median	Min	Max	25th	75th	XS:Count	XS%	
Jan	0	0	0	0	0	0	0:0	n/a	
Feb	0	0	0	0	0	0	0:0	n/a	
Mar	0	0	0	0	0	0	0:0	n/a	
Apr	0	0	0	0	0	0	0:0	n/a	
May	0	0	0	0	0	0	0:0	n/a	
Jun	83	81	48	120	68	91	0:9	0%	
Jul	115	107	51	218	85	151	1:24	4%	
Aug	139	155	51	205	99	176	2:28	7%	
Sep	171	164	66	387	108	204	6:23	26%	
Oct	0	0	0	0	0	0	0:0	n/a	
Nov	0	0	0	0	0	0	0:0	n/a	
Dec	0	0	0	0	0	0	0:0	n/a	
All Data	135	128	48	387	88	175	9:84	11%	

Maximum Water Quality Objective (400 MPN/100 mL)

Figure 15 shows monthly fecal coliform concentrations for San Lorenzo River at Highlands Park station from 2/15/2000 to 9/6/2005. Mean concentrations do not exceed the water quality objective.

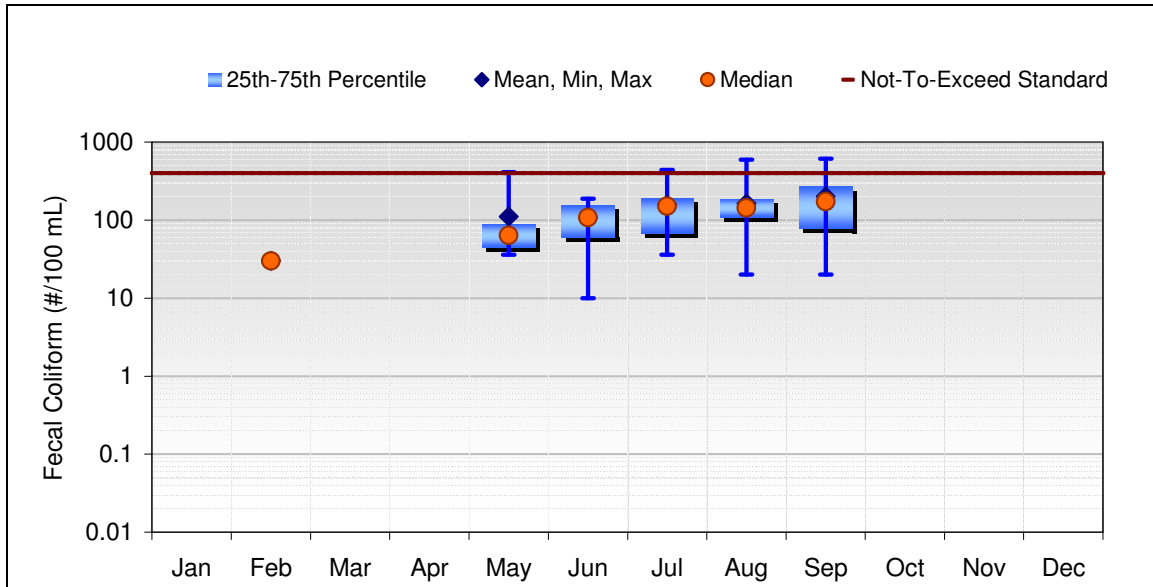


Figure 15. San Lorenzo River Fecal Coliform at Highlands Park (#/100 mL) and Water Contact Maximum Water Quality Objective (February 15, 2000 – September 6, 2005)

Table 15 below provides summary statistics of the above figure. Overall, the water quality objective was exceeded 5% of the time.

Table 15. San Lorenzo River Fecal Coliform at Highlands Park Data Summary (#/100 mL) and Exceedance of Water Contact Recreation Maximum Objective

Summary Statistics (Data: 2/15/2000 to 9/6/2005)									
Month	Mean	Median	Min	Max	25th	75th	XS:Count	XS%	
Jan	0	0	0	0	0	0	0:0	n/a	
Feb	30	30	30	30	30	30	0:1	0%	
Mar	0	0	0	0	0	0	0:0	n/a	
Apr	0	0	0	0	0	0	0:0	n/a	
May	112	64	36	412	45	90	1:7	14%	
Jun	107	108	10	188	60	156	0:25	0%	
Jul	158	151	36	440	69	195	1:26	4%	
Aug	163	144	20	596	110	189	1:28	4%	
Sep	201	173	20	612	78	272	2:24	8%	
Oct	0	0	0	0	0	0	0:0	n/a	
Nov	0	0	0	0	0	0	0:0	n/a	
Dec	0	0	0	0	0	0	0:0	n/a	
All Data	153	140	10	612	70	184	5:111	5%	

San Lorenzo River above Love Creek (180)

Geometric Mean Objective (200 MPN/100 mL)

Figure 16 below shows monthly fecal coliform concentrations for San Lorenzo River above Love Creek station from 1/4/2000 to 1/23/2006. The mean concentrations do not exceed the water quality objective.

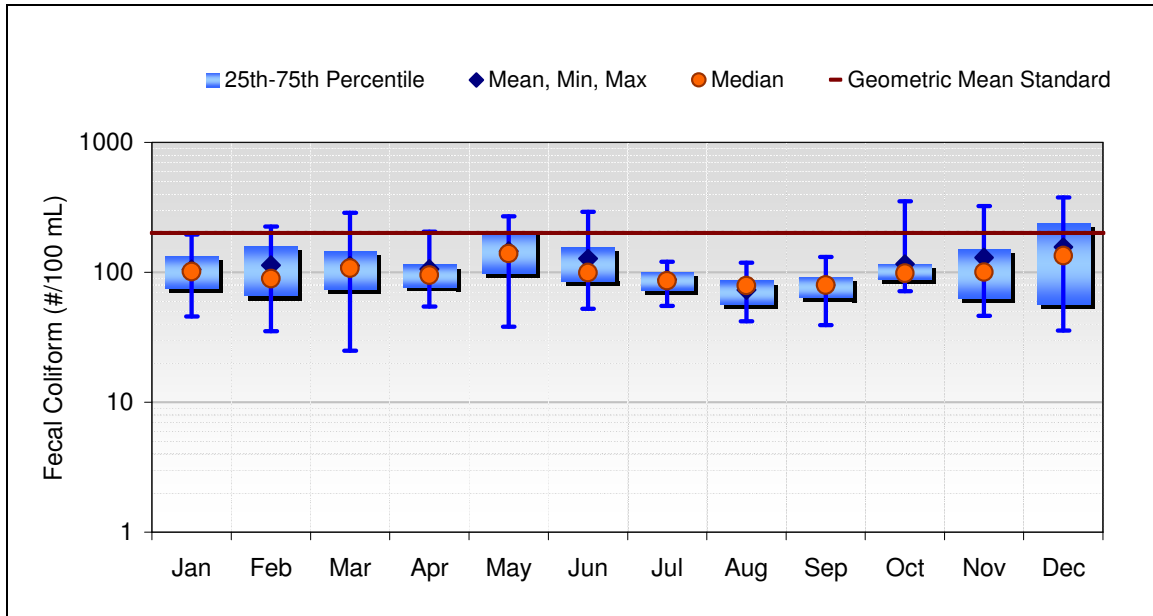


Figure 16. San Lorenzo River Fecal Coliform Above Love Creek (#/100 mL) and Water Contact Recreation Geometric Mean Water Quality Objective (January 4, 2000 – January 23, 2006)

Table 16 below provides summary statistics of the above figure. Overall, the water quality objective was exceeded 11% of the time.

Table 14. San Lorenzo River Fecal Coliform Above Love Creek Data Summary (#/100 mL) and Exceedance of Water Contact Recreation Geometric Mean Objective

Summary Statistics (Data: 1/4/2000 to 1/23/2006)									
Month	Mean	Median	Min	Max	25th	75th	XS:Count	XS%	
Jan	105	102	46	195	75	134	0:24	0%	
Feb	113	90	35	225	66	160	3:19	16%	
Mar	112	108	25	287	73	145	1:25	4%	
Apr	105	95	54	205	77	115	2:28	7%	
May	146	139	38	270	99	208	7:24	29%	
Jun	127	99	53	293	85	155	4:25	16%	
Jul	88	86	55	121	73	101	0:27	0%	
Aug	73	79	42	118	57	86	0:25	0%	
Sep	80	80	39	132	64	92	0:20	0%	
Oct	115	99	72	352	89	116	2:26	8%	
Nov	130	100	46	323	63	150	5:25	20%	
Dec	157	134	36	377	57	240	9:27	33%	
All Data	113	94	25	377	71	132	33:295	11%	

Maximum Water Quality Objective (400 MPN/100 mL)

Figure 17 shows monthly fecal coliform concentrations for San Lorenzo River above Love Creek station from 1/4/2000 to 1/23/2006. Mean concentrations do not exceed the water quality objective.

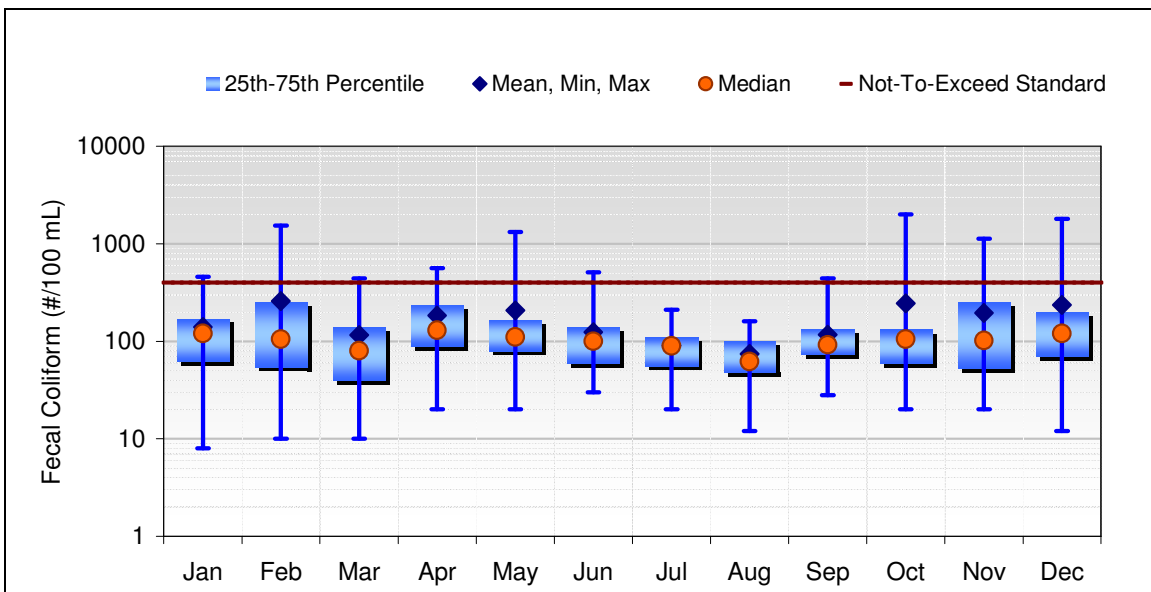


Figure 17. San Lorenzo River Fecal Coliform Above Love Creek (#/100 mL) and Water Contact Maximum Water Quality Objective (January 4, 2000 – January 23, 2006)

Table 17 below provides summary statistics of the above figure. Overall, the water quality objective was exceeded 8% of the time.

Table 17. San Lorenzo River Fecal Coliform Above Love Creek Data Summary (#/100 mL) and Exceedance of Water Contact Recreation Maximum Objective

Summary Statistics (Data: 1/4/2000 to 1/23/2006)								
Month	Mean	Median	Min	Max	25th	75th	XS:Count	XS%
Jan	141	120	8	460	62	171	1:31	3%
Feb	258	105	10	1540	55	255	5:24	21%
Mar	116	80	10	440	40	140	2:27	7%
Apr	185	130	20	560	90	235	4:27	15%
May	208	111	20	1320	80	165	3:24	13%
Jun	124	100	30	510	60	140	1:27	4%
Jul	91	90	20	210	56	109	0:27	0%
Aug	74	62	12	160	49	100	0:26	0%
Sep	117	92	28	440	73	132	1:27	4%
Oct	245	105	20	2000	60	132	2:26	8%
Nov	195	102	20	1130	53	255	3:26	12%
Dec	236	120	12	1800	71	200	3:27	11%
All Data	164	100	8	2000	60	150	25:319	8%

San Lorenzo River at Pacific Avenue, Brookdale (241)

Geometric Mean Objective (200 MPN/100 mL)

Figure 18 below shows monthly fecal coliform concentrations for San Lorenzo River at Pacific Avenue, Brookdale station from 7/11/2000 to 9/6/2005. The mean concentrations do not exceed the water quality objective.

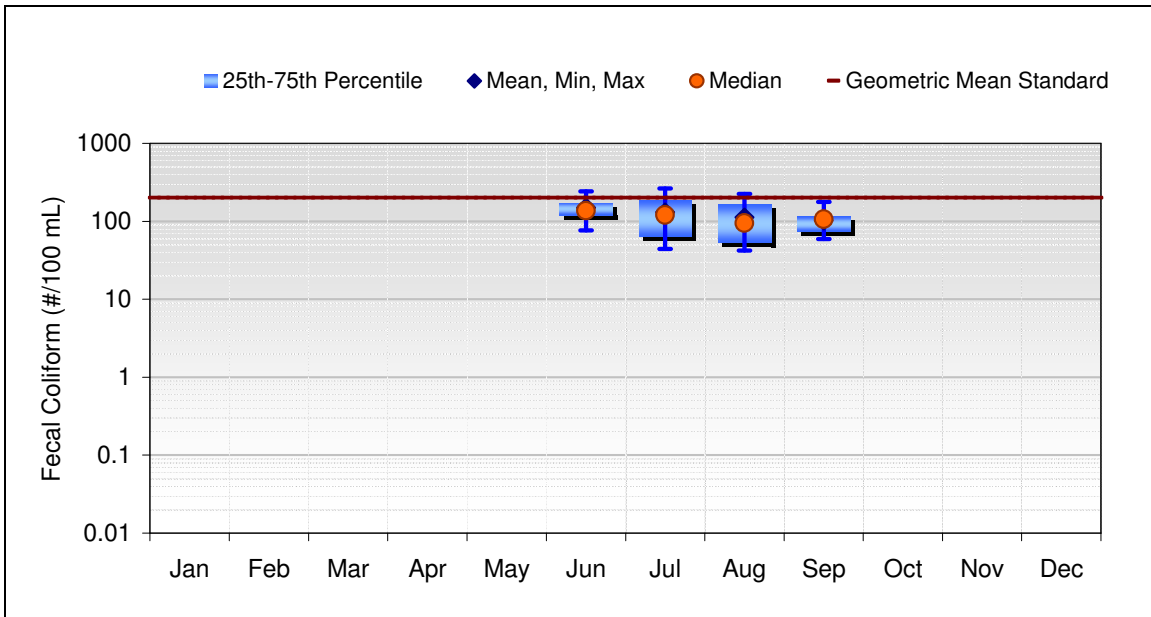


Figure 18. San Lorenzo River Fecal Coliform at Pacific Avenue, Brookdale (#/100 mL) and Water Contact Recreation Geometric Mean Water Quality Objective (July 11, 2000 – September 6, 2005)

Table 18 below provides summary statistics of the above figure. Overall, the water quality objective was exceeded 18% of the time.

Table 18. San Lorenzo River Fecal Coliform at Pacific Avenue, Brookdale Data Summary (#/100 mL) and Exceedance of Water Contact Recreation Geometric Mean Objective

Summary Statistics (Data: 7/11/2000 to 9/6/2005)								
Month	Mean	Median	Min	Max	25th	75th	XS:Count	XS%
Jan	0	0	0	0	0	0	0:0	n/a
Feb	0	0	0	0	0	0	0:0	n/a
Mar	0	0	0	0	0	0	0:0	n/a
Apr	0	0	0	0	0	0	0:0	n/a
May	0	0	0	0	0	0	0:0	n/a
Jun	150	137	77	243	120	172	2:8	25%
Jul	130	121	44	262	64	187	5:23	22%
Aug	112	95	42	224	53	168	5:26	19%
Sep	102	107	60	177	75	115	0:11	0%
Oct	0	0	0	0	0	0	0:0	n/a
Nov	0	0	0	0	0	0	0:0	n/a
Dec	0	0	0	0	0	0	0:0	n/a
All Data	121	111	42	262	63	173	12:68	18%

Maximum Water Quality Objective (400 MPN/100 mL)

Figure 19 shows monthly fecal coliform concentrations for San Lorenzo River at Pacific Avenue, Brookdale station from 7/11/2000 to 9/6/2005. Mean concentrations do not exceed the water quality objective.

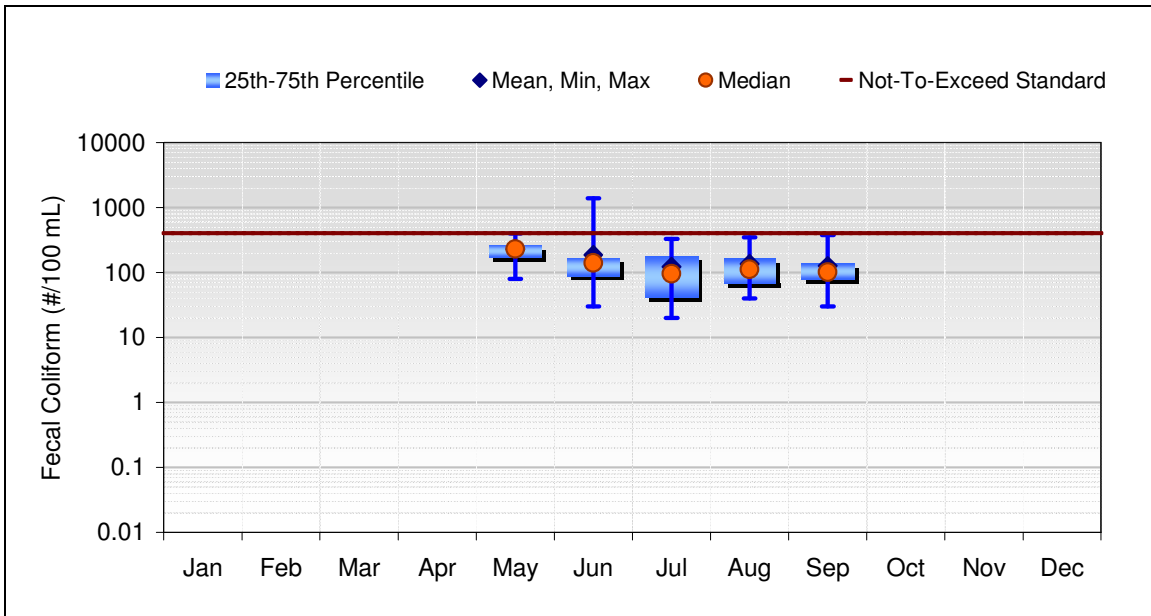


Figure 19. San Lorenzo River Fecal Coliform at Pacific Avenue, Brookdale (#/100 mL) and Water Contact Maximum Water Quality Objective (July 11, 2000 – September 6, 2005)

Table 19 below provides summary statistics of the above figure. Overall, the water quality objective was exceeded 1% of the time.

Table 19. San Lorenzo River Fecal Coliform at Pacific Avenue, Brookdale Data Summary (#/100 mL) and Exceedance of Water Contact Recreation Maximum Objective

Summary Statistics (Data: 7/11/2000 to 9/6/2005)								
Month	Mean	Median	Min	Max	25th	75th	XS:Count	XS%
Jan	0	0	0	0	0	0	0:0	n/a
Feb	0	0	0	0	0	0	0:0	n/a
Mar	0	0	0	0	0	0	0:0	n/a
Apr	0	0	0	0	0	0	0:0	n/a
May	228	230	80	400	174	262	0:6	0%
Jun	188	140	30	1390	90	169	1:24	4%
Jul	123	96	20	328	42	181	0:26	0%
Aug	137	112	40	348	69	166	0:27	0%
Sep	127	102	30	380	79	138	0:18	0%
Oct	0	0	0	0	0	0	0:0	n/a
Nov	0	0	0	0	0	0	0:0	n/a
Dec	0	0	0	0	0	0	0:0	n/a
All Data	149	124	20	1390	68	172	1:101	1%

San Lorenzo River at River Street (245)

Geometric Mean Objective (200 MPN/100 mL)

Figure 20 below shows monthly fecal coliform concentrations for San Lorenzo River at River Street station from 1/4/2000 to 1/23/2006. The mean concentrations exceed the water quality objective during December.

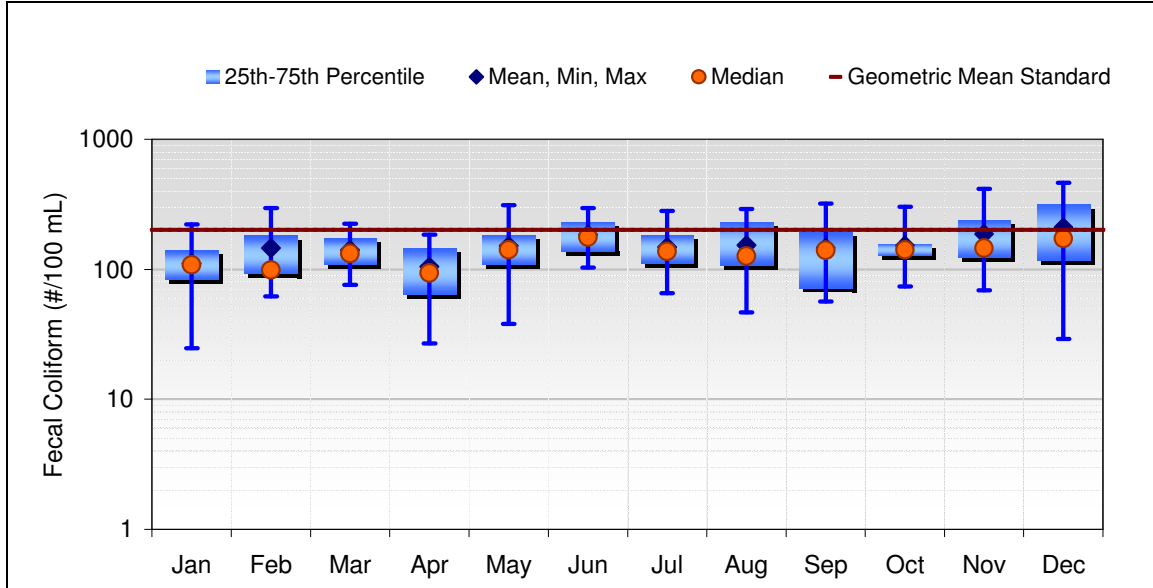


Figure 20. San Lorenzo River Fecal Coliform at River Street (#/100 mL) and Water Contact Recreation Geometric Mean Water Quality Objective (January 4, 2000 to January 23, 2006)

Table 20 below provides summary statistics of the above figure. Overall, the water quality objective was exceeded 22% of the time.

Table 20. San Lorenzo River Fecal Coliform at River Street Data Summary (#/100 mL) and Exceedance of Water Contact Recreation Geometric Mean Objective

Summary Statistics (Data: 1/4/2000 to 1/23/2006)								
Month	Mean	Median	Min	Max	25th	75th	XS:Count	XS%
Jan	111	108	25	222	84	139	2:25	8%
Feb	145	99	62	296	93	181	4:19	21%
Mar	141	133	76	224	110	173	2:22	9%
Apr	105	94	27	185	64	147	0:26	0%
May	151	141	38	310	110	184	5:24	21%
Jun	185	177	103	297	137	232	10:23	43%
Jul	148	137	66	281	112	184	4:25	16%
Aug	153	127	46	291	108	231	9:31	29%
Sep	147	140	56	321	72	195	5:22	23%
Oct	153	141	74	301	128	156	4:24	17%
Nov	187	146	69	416	124	240	9:25	36%
Dec	210	173	29	464	117	316	10:28	36%
All Data	153	140	25	464	99	184	64:294	22%

Maximum Water Quality Objective (400 MPN/100 mL)

Figure 21 shows monthly fecal coliform concentrations for San Lorenzo River at River Street station from 1/4/2000 to 1/23/2006. Mean concentrations do not exceed the water quality objective.

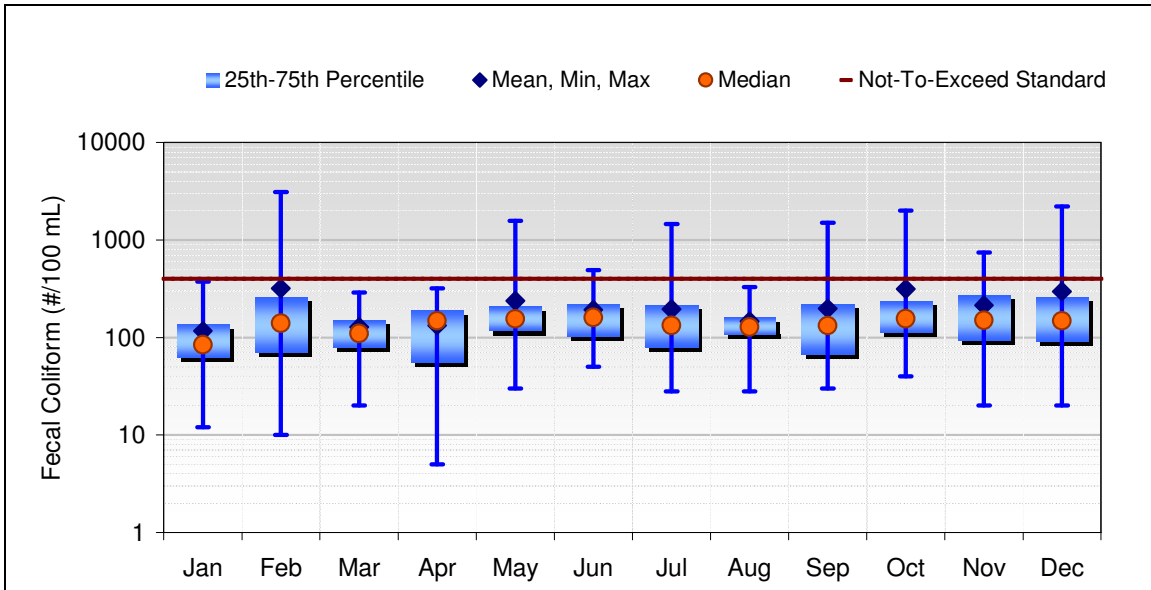


Figure 21. San Lorenzo River Fecal Coliform at River Street (#/100 mL) and Water Contact Maximum Water Quality Objective (Janaruy 4, 2000 – January 23, 2006)

Table 21 below provides summary statistics of the above figure. Overall, the water quality objective was exceeded 8% of the time.

Table 21. San Lorenzo River Fecal Coliform at River Street Data Summary (#/100 mL) and Exceedance of Water Contact Recreation Maximum Objective

Summary Statistics (Data: 1/4/2000 to 1/23/2006)								
Month	Mean	Median	Min	Max	25th	75th	XS:Count	XS%
Jan	117	84	12	372	63	137	0:32	0%
Feb	317	140	10	3100	71	258	4:24	17%
Mar	128	110	20	290	80	150	0:25	0%
Apr	133	148	5	320	56	190	0:27	0%
May	238	155	30	1570	118	208	3:24	13%
Jun	193	160	50	490	102	222	3:27	11%
Jul	195	133	28	1452	80	216	2:30	7%
Aug	146	128	28	328	108	160	0:29	0%
Sep	198	132	30	1500	68	220	2:25	8%
Oct	314	156	40	2000	113	235	4:26	15%
Nov	215	150	20	740	94	270	4:27	15%
Dec	297	148	20	2210	92	260	3:29	10%
All Data	205	136	5	3100	80	220	25:325	8%

Two Bar Creek at San Lorenzo River (290)

Geometric Mean Objective (200 MPN/100 mL)

There are not enough water quality data at the Two Bar Creek at San Lorenzo Station to calculate the geometric mean. The most recent data available is from 11/29/2001 – 1/12/2006. No months have the minimum of five samples needed to calculate geometric means.

Maximum Water Quality Objective (400 MPN/100 mL)

Figure 22 shows monthly fecal coliform concentrations for Two Bar Creek at San Lorenzo River station from 11/29/2001 – 1/12/2006. Mean concentrations exceed the water quality objective September through December.

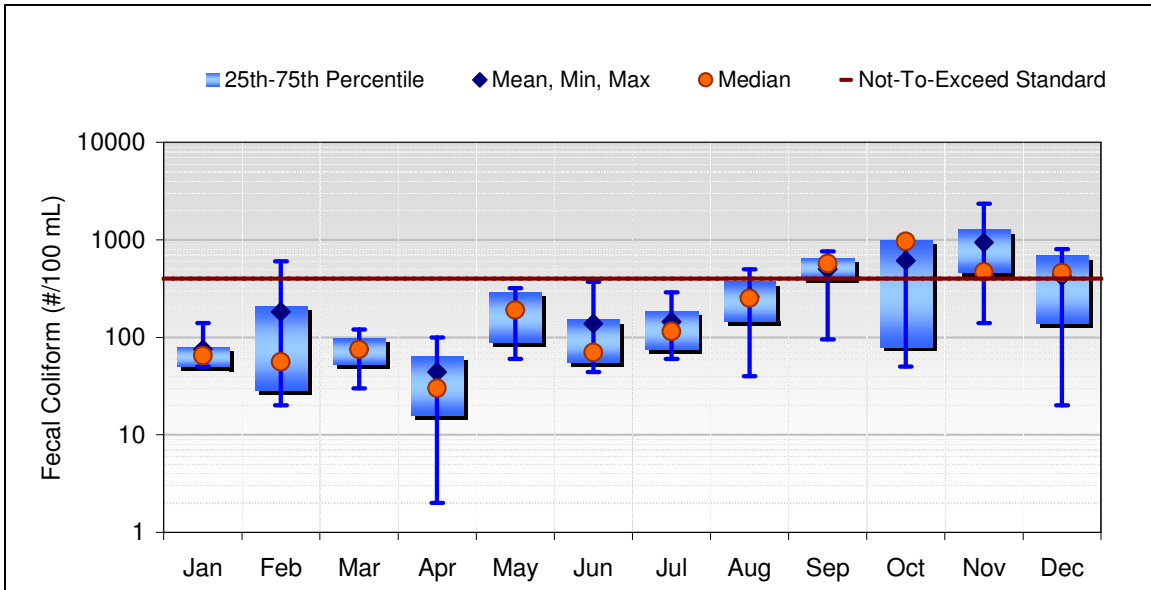


Figure 22. Two Bar Creek Fecal Coliform at San Lorenzo River (#/100 mL) and Water Contact Maximum Water Quality Objective (November 29, 2001 – January 12, 2006)

Table 22 below provides summary statistics of the above figure. Overall, the water quality objective was exceeded 30% of the time.

Table 22. Two Bar Creek Fecal Coliform at San Lorenzo River Data Summary (#/100 mL) and Exceedance of Water Contact Recreation Maximum Objective

Summary Statistics (Data: 11/29/2001 to 1/12/2006)								
Month	Mean	Median	Min	Max	25th	75th	XS:Count	XS%
Jan	75	65	50	140	50	80	0:6	0%
Feb	183	56	20	600	29	210	1:4	25%
Mar	75	75	30	120	53	98	0:4	0%
Apr	44	30	2	100	16	65	0:3	0%
May	190	190	60	320	90	290	0:4	0%
Jun	139	70	44	370	56	153	0:4	0%
Jul	145	115	60	290	75	185	0:4	0%
Aug	263	252	40	496	146	374	1:3	33%
Sep	504	570	95	760	405	653	4:6	67%
Oct	614	960	50	990	80	990	3:5	60%
Nov	940	470	140	2350	470	1270	4:5	80%
Dec	423	460	20	800	140	690	3:6	50%
All Data	327	115	2	2350	60	490	16:54	30%

San Lorenzo River above Two Bar Creek (300)

Geometric Mean Objective (200 MPN/100 mL)

There are not enough water quality data at the San Lorenzo River above Two Bar Creek Station to calculate the geometric mean. The most recent data available is from 11/06/2000 – 1/12/2006. No months have the minimum of five samples needed to calculate geometric means.

Maximum Water Quality Objective (400 MPN/100 mL)

Figure 23 shows monthly fecal coliform concentrations for San Lorenzo River at Two Bar Creek station from 11/06/2000 – 1/12/2006. Mean concentrations exceeded the water quality objective in July and November.

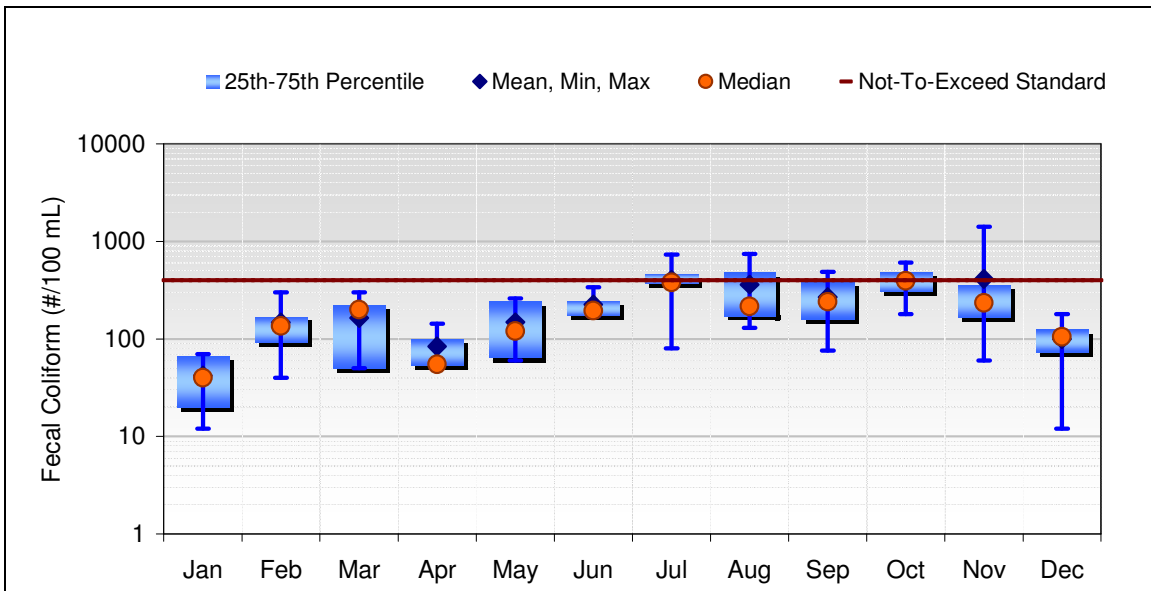


Figure 23. San Lorenzo River Fecal Coliform at Two Bar Creek (#/100 mL) and Water Contact Maximum Water Quality Objective (November 6, 2000 – January 12, 2006)

Table 23 below provides summary statistics of the above figure. Overall, the water quality objective was exceeded 14% of the time.

Table 23. San Lorenzo River at Two Bar Creek Fecal Coliform Data Summary (#/100 mL) and Exceedance of Water Contact Recreation Maximum Objective

Summary Statistics (Data: 11/6/2000 to 1/12/2006)								
Month	Mean	Median	Min	Max	25th	75th	XS:Count	XS%
Jan	42	40	12	70	20	68	0:6	0%
Feb	148	136	40	300	92	170	0:5	0%
Mar	164	200	50	300	50	220	0:5	0%
Apr	84	55	52	144	54	100	0:3	0%
May	149	120	60	260	64	240	0:5	0%
Jun	226	196	172	340	175	246	0:4	0%
Jul	404	380	80	730	370	460	2:5	40%
Aug	362	216	130	740	173	478	1:3	33%
Sep	267	240	76	488	160	380	2:6	33%
Oct	395	395	180	610	308	483	2:4	50%
Nov	413	235	60	1410	165	358	1:6	17%
Dec	100	105	12	180	74	125	0:6	0%
All Data	225	171	12	1410	70	298	8:58	14%

Carbonera Creek at Branciforte Creek (0110)

Geometric Mean Water Quality Objective (200 MPN/100 mL)

There are not enough water quality data at the Carbonera Creek station from 10/19/2000 to 06/15/2006 to calculate the geometric mean. No months have the minimum of five samples needed to calculate geometric means.

Maximum Water Quality Objective (400 MPN/100 mL)

Figure 24 below shows monthly fecal coliform concentrations for Carbonera Creek at the Branciforte Creek confluence from 10/19/2000 to 06/15/2006. The means do not exceed the water quality objective. However, as shown in the figure below, there are not enough data to determine impairment conditions, because many months either had no sample or only one sample taken.

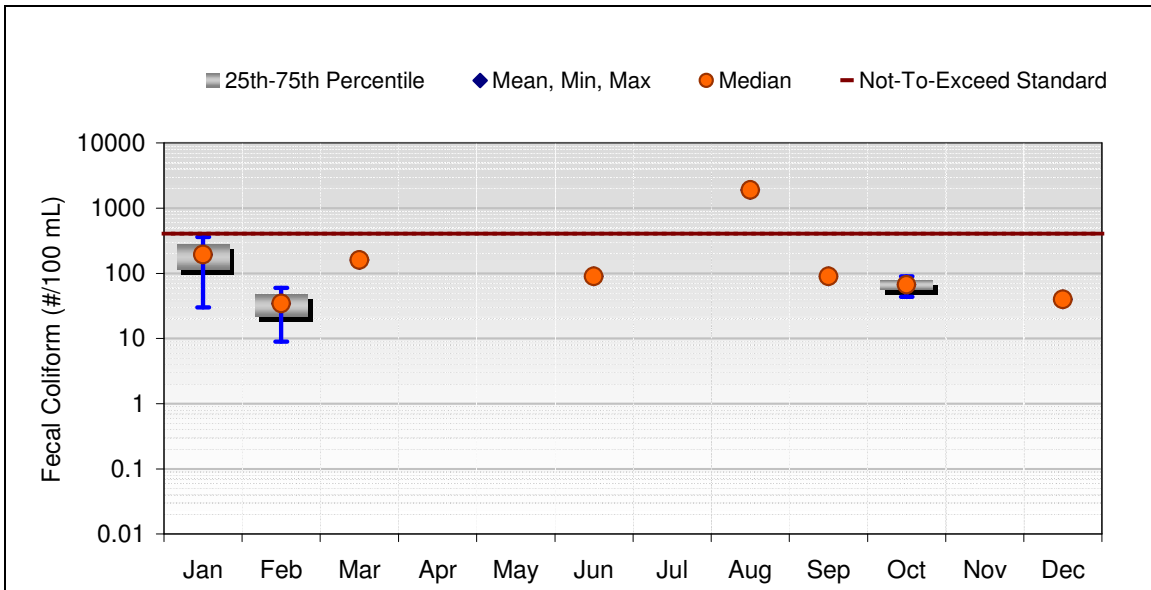


Figure 24. Carbonera Creek at Branciforte Creek Fecal Coliform (#/100 mL) and Water Contact Recreation Maximum Water Quality Objective (October 19, 2000 – February 26, 2002)

Table 24 below provides summary statistics of the above figure. Overall, the water quality objective was exceeded 9% of the time. There are not enough data to determine impairment conditions, because many months had either no sample or only one sample taken.

Table 24. Carbonera Creek Fecal Coliform at Branciforte Creek Data Summary (#/100 mL) and Exceedance of Water Contact Recreation Maximum Objective

Summary Statistics (Data: 10/19/2000 to 6/15/2006)								
Month	Mean	Median	Min	Max	25th	75th	XS:Count	XS%
Jan	195	195	30	360	113	278	0:2	0%
Feb	35	35	9	60	22	47	0:2	0%
Mar	160	160	160	160	160	160	0:1	0%
Apr	0	0	0	0	0	0	0:0	n/a
May	0	0	0	0	0	0	0:0	n/a
Jun	90	90	90	90	90	90	0:1	0%
Jul	0	0	0	0	0	0	0:0	n/a
Aug	1900	1900	1900	1900	1900	1900	1:1	100%
Sep	90	90	90	90	90	90	0:1	0%
Oct	67	67	44	90	56	79	0:2	0%
Nov	0	0	0	0	0	0	0:0	n/a
Dec	40	40	40	40	40	40	0:1	0%
All Data	261	90	9	1900	42	125	1:11	9%

Carbonera Creek at Highway 17

Geometric Mean *E. coli* Water Quality Criteria (126 MPN/100 mL)

There are not enough water quality data at the Carbonera Creek station from 1/6/2005 to 2/17/2005 to calculate the geometric mean. No months have the minimum of five samples needed to calculate geometric means.

Maximum Water *E. coli* Quality Criteria (235 MPN/100 mL)

Figure 25 below shows monthly *E. coli* concentrations for Carbonera Creek at Highway 17 from 1/6/2005 to 2/17/2005. The mean concentrations do not exceed the water quality criteria. However, as shown in the figure below, there are not enough data to fully determine impairment conditions because many months had no samples. The month of January in 2005 had four samples and the month of February in 2005 had two samples.

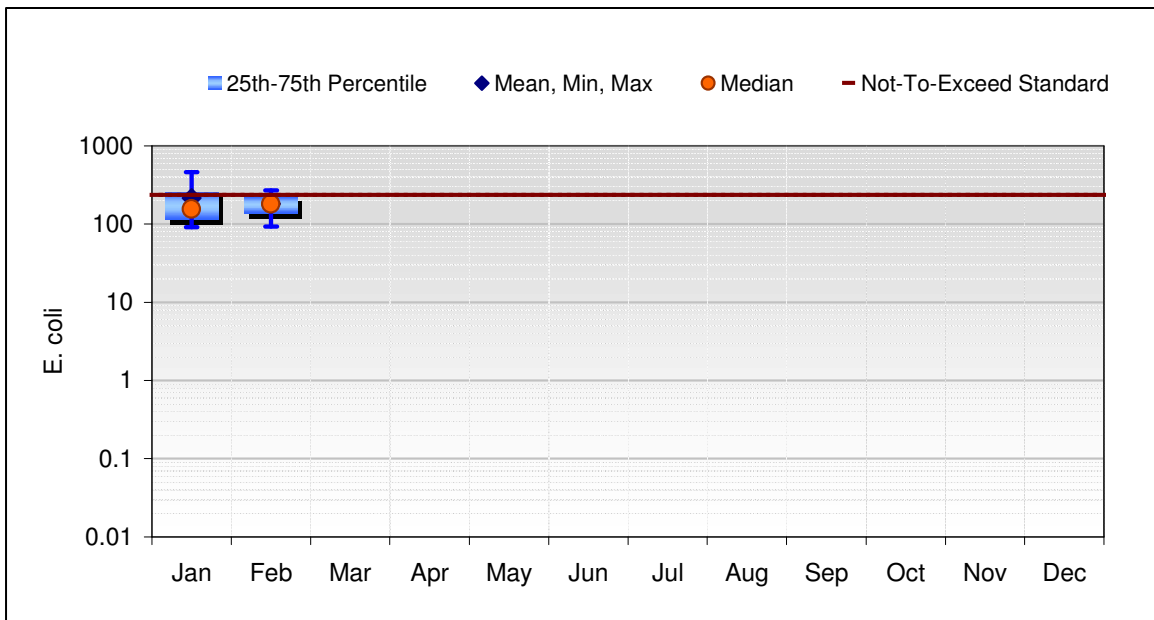


Figure 25. Carbonera Creek at Highway 17 (#/100 mL) and *E. coli* Water Contact Recreation Maximum Water Quality Criteria (January 06, 2005- February 17, 2005)

Table 25 below provides summary statistics of the above figure. Based on two months of sampling, the water quality criterion was exceeded 33% of the time. There are not enough data to determine impairment conditions for all months, but the impairment occurred in January and February.

Table 25. Carbonera Creek *E. coli* at Highway 17 Data Summary (#/100 mL) and Exceedance of Water Contact Recreation Maximum Criteria

Summary Statistics (Data: 1/6/2005 to 2/17/2005)								
Month	Mean	Median	Min	Max	25th	75th	XS:Count	XS%

Jan	215	155	91	460	113	258	1:4	25%
Feb	182	182	93	270	137	226	1:2	50%
Mar	0	0	0	0	0	0	0:0	n/a
Apr	0	0	0	0	0	0	0:0	n/a
May	0	0	0	0	0	0	0:0	n/a
Jun	0	0	0	0	0	0	0:0	n/a
Jul	0	0	0	0	0	0	0:0	n/a
Aug	0	0	0	0	0	0	0:0	n/a
Sep	0	0	0	0	0	0	0:0	n/a
Oct	0	0	0	0	0	0	0:0	n/a
Nov	0	0	0	0	0	0	0:0	n/a
Dec	0	0	0	0	0	0	0:0	n/a
All Data	204	155	91	460	100	250	2:6	33%

Carbonera Creek above Camp Evers Creek

Geometric Mean *E. coli* Water Quality Criteria (126 MPN/100 mL)

There are not enough water quality data at this station from 1/6/2005 to 2/17/2005 to calculate the geometric mean. No months have the minimum of five samples needed to calculate geometric means.

Maximum Water *E. coli* Quality Criteria (235 MPN/100 mL)

Figure 26 below shows monthly *E. coli* concentrations for Carbonera Creek above Camp Evers Creek from 1/6/2005 to 2/17/2005. The mean concentrations do not exceed the water quality criteria. However, as shown in the figure below, there are not enough data to determine impairment conditions, because many months had no samples. The month of January in 2005 had four samples and the month of February in 2005 had two samples.

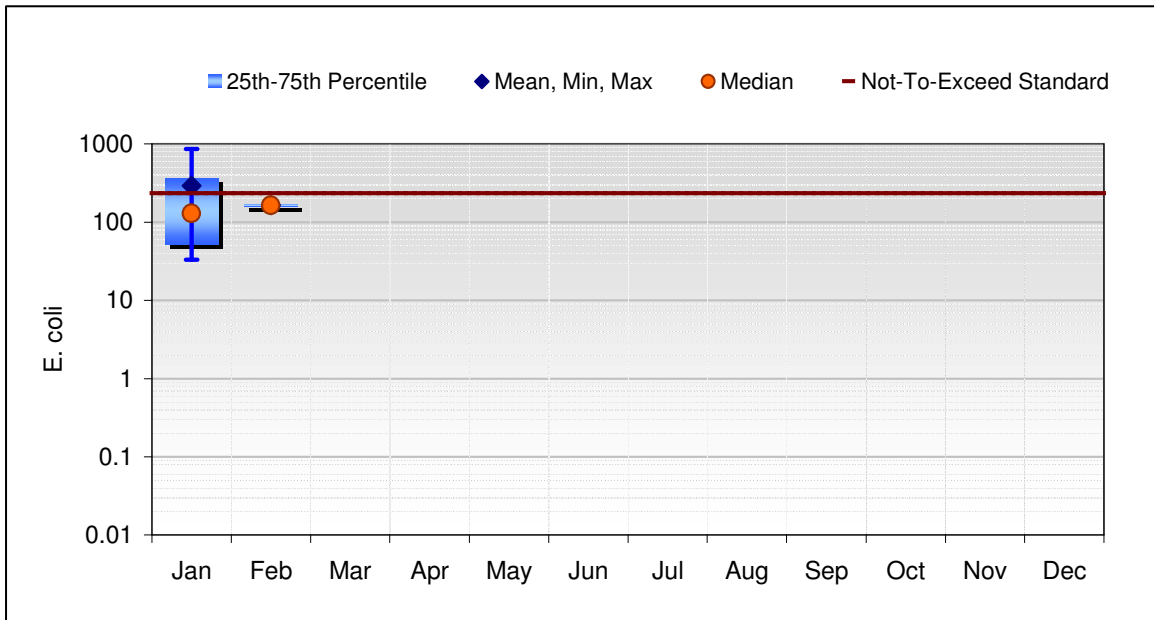


Figure 26. Carbonera Creek above Camp Evers Creek (#/100 mL) and *E. coli* Water Contact Recreation Maximum Water Quality Criteria (January 06, 2005-February 17, 2005)

Table 26 below provides summary statistics of the above figure. Based on two months of sampling, the water quality criterion was exceeded 17% of the time. There are not enough data to determine impairment conditions for all months, but the impairment occurred in January.

Table 26. Carbonera Creek *E. coli* above Camp Evers Creek Data Summary (#/100 mL) and Exceedance of Water Contact Recreation Maximum Criteria

Summary Statistics (Data: 1/6/2005 to 2/17/2005)								
Month	Mean	Median	Min	Max	25th	75th	XS:Count	XS%
Jan	291	130	33	870	53	368	1:4	25%
Feb	165	165	150	180	158	173	0:2	0%
Mar	0	0	0	0	0	0	0:0	n/a
Apr	0	0	0	0	0	0	0:0	n/a
May	0	0	0	0	0	0	0:0	n/a
Jun	0	0	0	0	0	0	0:0	n/a
Jul	0	0	0	0	0	0	0:0	n/a
Aug	0	0	0	0	0	0	0:0	n/a
Sep	0	0	0	0	0	0	0:0	n/a
Oct	0	0	0	0	0	0	0:0	n/a
Nov	0	0	0	0	0	0	0:0	n/a
Dec	0	0	0	0	0	0	0:0	n/a
All Data	249	165	33	870	82	195	1:6	17%

Carbonera Creek at Disc Drive

Geometric Mean *E. coli* Water Quality Criteria (126 MPN/100 mL)

There are not enough water quality data at this station from 1/6/2005 to 2/17/2005 to calculate the geometric mean. No months have the minimum of five samples needed to calculate geometric means.

Maximum Water *E. coli* Quality Criteria (235 MPN/100 mL)

Figure 27 below shows monthly *E. coli* concentrations for Carbonera Creek above Camp Evers Creek from 1/6/2005 to 2/17/2005. The mean concentrations do not exceed the water quality criteria. However, as shown in the figure below, there are not enough data to determine impairment conditions, because many months had no samples. The month of January in 2005 had four samples and the month of February in 2005 had two samples.

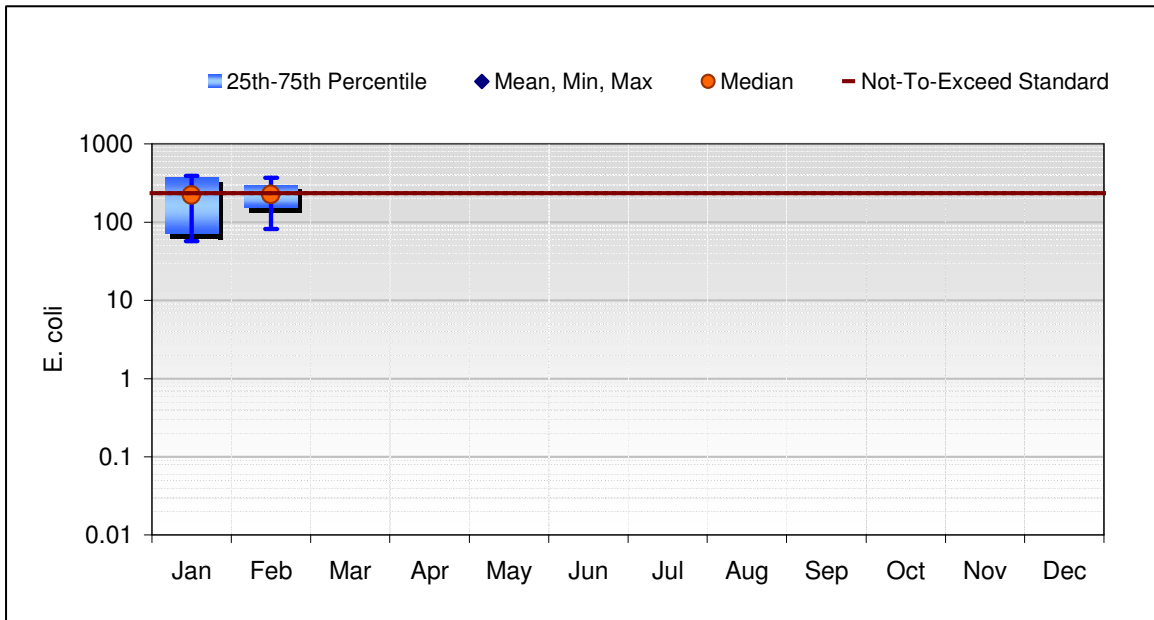


Figure 27. Carbonera Creek at Disc Drive (#/100 mL) and Water Contact Recreation Maximum Water Quality Criteria (January 06, 2005- February 17, 2005)

Table 27 below provides summary statistics of the above figure. Based on two months of sampling, the water quality criterion was exceeded 50% of the time. There are not enough data to determine impairment conditions for all months, but the impairment occurred in January and February.

Table 27. Carbonera Creek *E. coli* at Disc Drive Data Summary (#/100 mL) and Exceedance of Water Contact Recreation Maximum Criteria

Summary Statistics (Data: 1/6/2005 to 2/17/2005)								
Month	Mean	Median	Min	Max	25th	75th	XS:Count	XS%
Jan	223	223	57	390	71	375	2:4	50%
Feb	226	226	82	370	154	298	1:2	50%
Mar	0	0	0	0	0	0	0:0	n/a
Apr	0	0	0	0	0	0	0:0	n/a
May	0	0	0	0	0	0	0:0	n/a
Jun	0	0	0	0	0	0	0:0	n/a
Jul	0	0	0	0	0	0	0:0	n/a
Aug	0	0	0	0	0	0	0:0	n/a
Sep	0	0	0	0	0	0	0:0	n/a
Oct	0	0	0	0	0	0	0:0	n/a
Nov	0	0	0	0	0	0	0:0	n/a
Dec	0	0	0	0	0	0	0:0	n/a
All Data	224	226	57	390	77	370	3:6	50%

Camp Evers Creek at Carbonera Creek

Geometric Mean *E. coli* Water Quality Criteria (126 MPN/100 mL)

There are not enough water quality data at this station from 1/6/2005 to 2/17/2005 to calculate the geometric mean. No months have the minimum of five samples needed to calculate geometric means.

Maximum Water *E. coli* Quality Criteria (235 MPN/100 mL)

Figure 28 below shows monthly *E. coli* concentrations for Carbonera Creek above Camp Evers Creek from 1/6/2005 to 2/17/2005. The mean concentrations do not exceed the water quality criteria. However, as shown in the figure below, there are not enough data to determine impairment conditions, because many months had no samples. The month of January in 2005 had four samples and the month of February in 2005 had two samples.

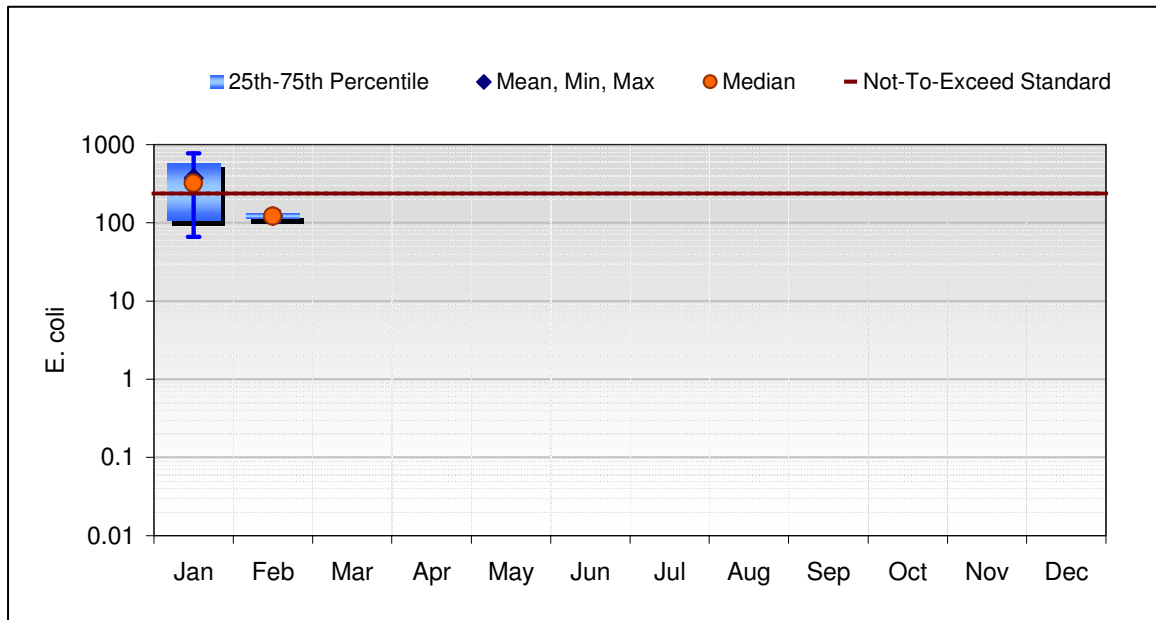


Figure 28. Camp Evers Creek at Carbonera Creek (#/100 mL) and Water Contact Recreation Maximum Water Quality Criteria (January 06, 2005- February 17, 2005)

Table 28 below provides summary statistics of the above figure. Based on two months of sampling, the water quality criterion was exceeded 33% of the time. There are not enough data to determine impairment conditions for all months, but the impairment occurred in January.

Table 28. Camp Evers Creek at Carbonera Creek Data Summary (#/100 mL) and Exceedance of Water Contact Recreation Maximum Objective

Summary Statistics (Data: 1/6/2005 to 2/17/2005)								
Month	Mean	Median	Min	Max	25th	75th	XS:Count	XS%
Jan	369	320	66	770	107	583	2:4	50%
Feb	122	122	104	140	113	131	0:2	0%
Mar	0	0	0	0	0	0	0:0	n/a
Apr	0	0	0	0	0	0	0:0	n/a
May	0	0	0	0	0	0	0:0	n/a
Jun	0	0	0	0	0	0	0:0	n/a
Jul	0	0	0	0	0	0	0:0	n/a
Aug	0	0	0	0	0	0	0:0	n/a
Sep	0	0	0	0	0	0	0:0	n/a
Oct	0	0	0	0	0	0	0:0	n/a
Nov	0	0	0	0	0	0	0:0	n/a
Dec	0	0	0	0	0	0	0:0	n/a
All Data	287	130	66	770	108	425	2:6	33%

Camp Evers Creek at Whispering Pines

Geometric Mean *E. coli* Water Quality Criteria (126 MPN/100 mL)

There are not enough water quality data at this station from 1/6/2005 to 2/17/2005 to calculate the geometric mean. No months have the minimum of five samples needed to calculate geometric means.

Maximum Water *E. coli* Quality Criteria (235 MPN/100 mL)

Figure 29 below shows monthly *E. coli* concentrations for Carbonera Creek above Camp Evers Creek from 1/6/2005 to 2/17/2005. The mean concentrations do not exceed the water quality criteria. However, as shown in the figure below, there are not enough data to determine impairment conditions, because many months had no samples. The month of January in 2005 had four samples and the month of February in 2005 had two samples.

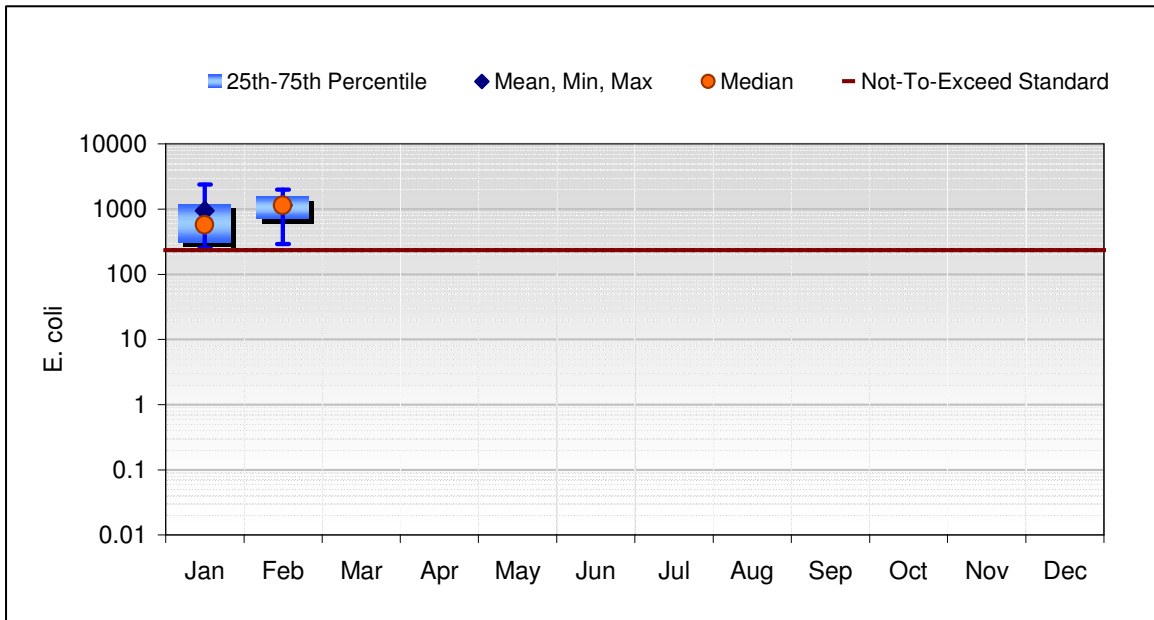


Figure 29. Camp Evers Creek at Whispering Pines (#/100 mL) and Water Contact Recreation Maximum Water Quality Criteria (January 06, 2005- February 17, 2005)

Table 29 below provides summary statistics of the above figure. Based on two months of sampling, the water quality criterion was exceeded 100% of the time. There are not enough data to determine impairment conditions for all months, but the impairment occurred in January and February.

Table 29. Camp Evers Creek at Whispering Pines Data Summary (#/100 mL) and Exceedance of Water Contact Recreation Maximum Criteria

Summary Statistics (Data: 1/6/2005 to 2/17/2005)								
Month	Mean	Median	Min	Max	25th	75th	XS:Count	XS%
Jan	950	575	250	2400	310	1215	4:4	100%
Feb	1145	1145	290	2000	718	1573	2:2	100%
Mar	0	0	0	0	0	0	0:0	n/a
Apr	0	0	0	0	0	0	0:0	n/a
May	0	0	0	0	0	0	0:0	n/a
Jun	0	0	0	0	0	0	0:0	n/a
Jul	0	0	0	0	0	0	0:0	n/a
Aug	0	0	0	0	0	0	0:0	n/a
Sep	0	0	0	0	0	0	0:0	n/a
Oct	0	0	0	0	0	0	0:0	n/a
Nov	0	0	0	0	0	0	0:0	n/a
Dec	0	0	0	0	0	0	0:0	n/a
All Data	1015	575	250	2400	300	1705	6:6	100%

Camp Evers Creek at Cold Stream Way

Geometric Mean *E. coli* Water Quality Criteria (126 MPN/100 mL)

There are not enough water quality data at this station from 1/6/2005 to 2/17/2005 to calculate the geometric mean. No months have the minimum of five samples needed to calculate geometric means.

Maximum Water *E. coli* Quality Criteria (235 MPN/100 mL)

Figure 30 below shows monthly *E. coli* concentrations for Carbonera Creek above Camp Evers Creek from 1/6/2005 to 2/17/2005. The mean concentrations do not exceed the water quality criteria. However, as shown in the figure below, there are not enough data to determine impairment conditions, because many months either had no samples. The month of January in 2005 had four samples and the month of February in 2005 had two samples.

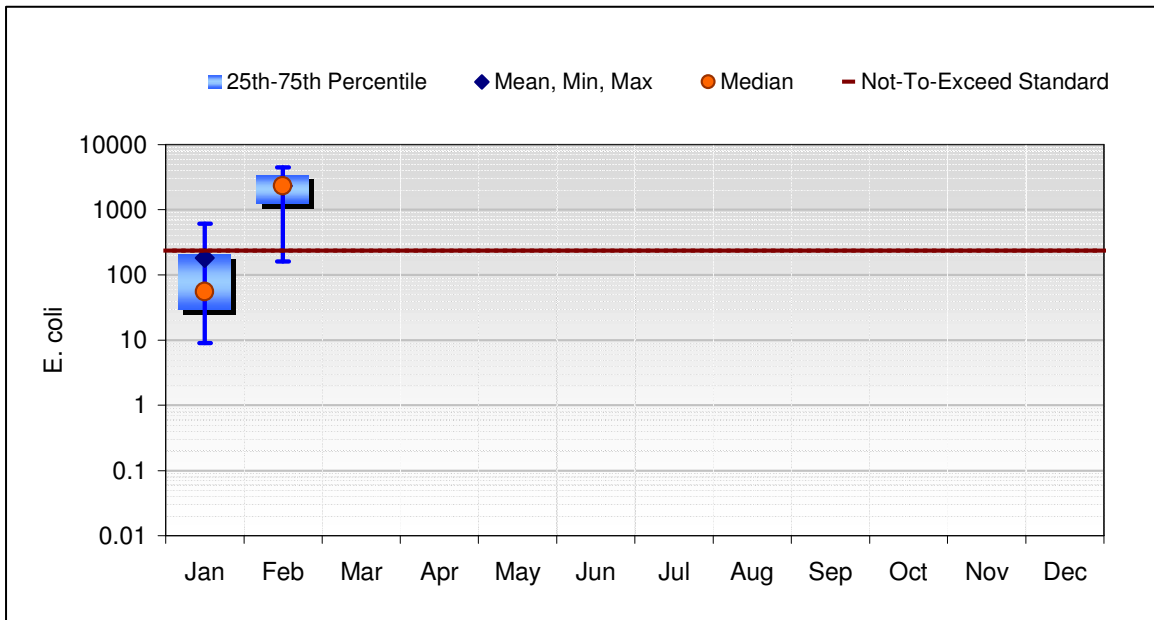


Figure 30. Camp Evers Creek at Cold Stream Way (#/100 mL) and Water Contact Recreation Maximum Water Quality Criteria (January 06, 2005- February 17, 2005)

Table 30 below provides summary statistics of the above figure. Based on two months of sampling, the water quality criterion was exceeded 33% of the time. There are not enough data to determine impairment conditions for all months, but the impairment occurred in January and February.

Table 30. Camp Evers Creek at Cold Stream Way (#/100 mL) and Water Contact Recreation Maximum Water Quality Criteria (January 06, 2005- February 17, 2005)

Summary Statistics (Data: 1/6/2005 to 2/17/2005)								
Month	Mean	Median	Min	Max	25th	75th	XS:Count	XS%
Jan	183	56	9	610	29	209	1:4	25%
Feb	2330	2330	160	4500	1245	3415	1:2	50%
Mar	0	0	0	0	0	0	0:0	n/a
Apr	0	0	0	0	0	0	0:0	n/a
May	0	0	0	0	0	0	0:0	n/a
Jun	0	0	0	0	0	0	0:0	n/a
Jul	0	0	0	0	0	0	0:0	n/a
Aug	0	0	0	0	0	0	0:0	n/a
Sep	0	0	0	0	0	0	0:0	n/a
Oct	0	0	0	0	0	0	0:0	n/a
Nov	0	0	0	0	0	0	0:0	n/a
Dec	0	0	0	0	0	0	0:0	n/a
All Data	898	118	9	4500	46	498	2:6	33%