

Source: EcoAtlas (San Francisco Estuary Institute, 1998)

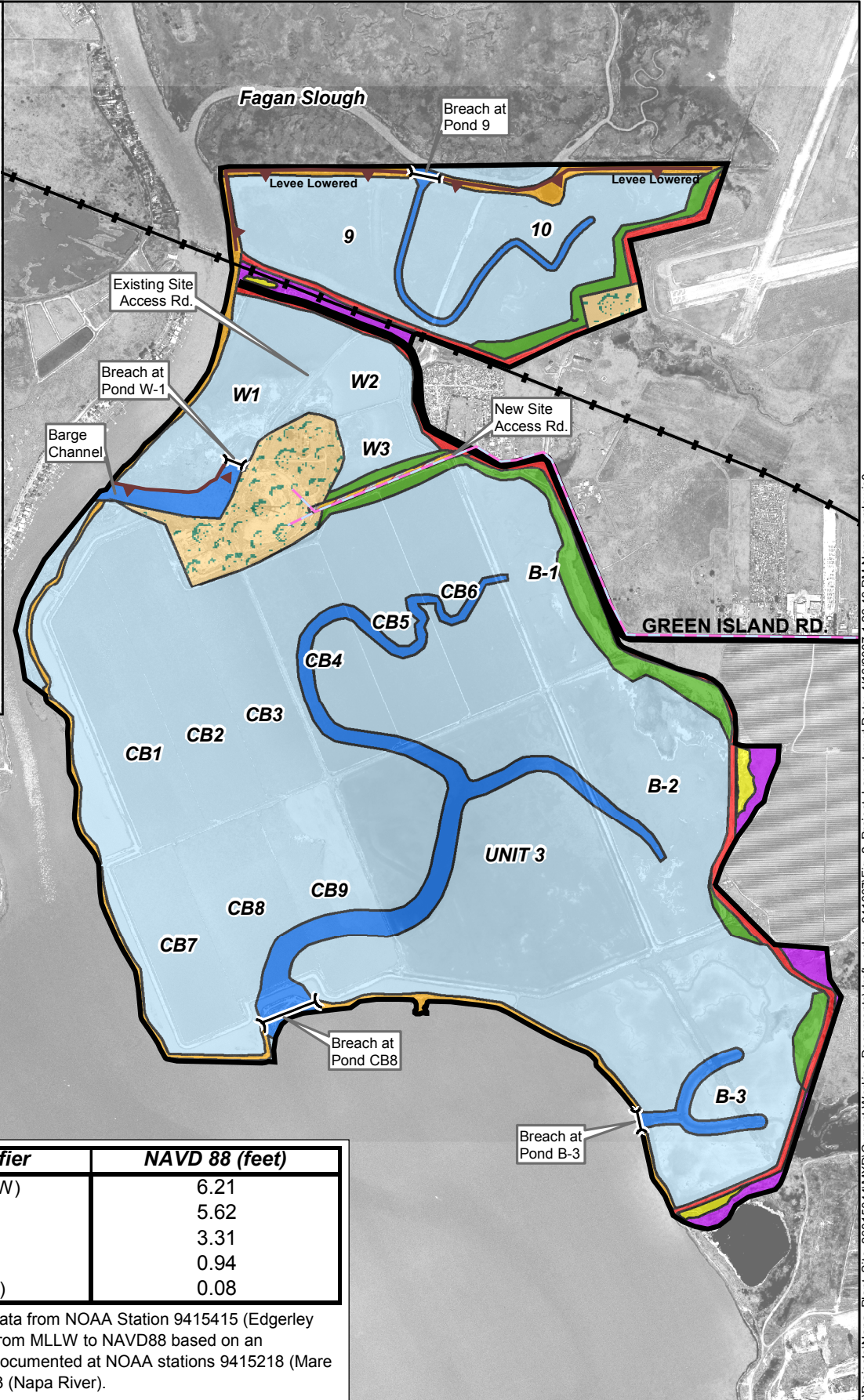


Applicant: California Department of Fish and Game	Napa Plant Site Restoration Project	Vicinity Map	Figure 1
---	--	--------------	-------------

URS Corporation L:\Projects\Napa_Plant_Site_26815044\MXD\Current Working Documents\Draft\ER\Figure_1-1\vicinity_with_Regional_Wetland_Habitats12-20.mxd Date/Time: 1/12/2006 1:28:26 PM Name: dhwright0

Legend

-  Levee Breaches
-  Proposed Water Pipeline Alignment
-  Rail Roads
-  Local roads
-  Project Boundary
-  Existing Flood Control Levee
-  Islands in Managed Pond
-  Levee Improvements
-  Managed Pond
-  Managed Pond Levee
-  New Access Road
-  Seasonal Wetland (Ecotone Community)
-  Seasonal Wetland (Pickleweed Community)
-  Tidal Channel
-  Tidal Marsh
-  Tidal Marsh (Ecotone Community)
-  Uplands

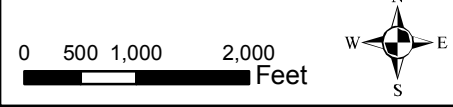



NOAA Tidal Benchmark Data

Tidal Elevation Identifier	NAVD 88 (feet)
Mean Higher High Water (MHHW)	6.21
Mean High Water (MHW)	5.62
Mean Sea Level (MSL)	3.31
Mean Low Water (MLW)	0.94
Mean Lower Low Water (MLLW)	0.08

Note: Elevations based on mean data from NOAA Station 9415415 (Edgerley Island, MLLW datum). Conversion from MLLW to NAVD88 based on an interpolation between conversions documented at NOAA stations 9415218 (Mare Island Naval Shipyard) and 9415623 (Napa River).




Source: Orthophotos of Napa County, April, 2004

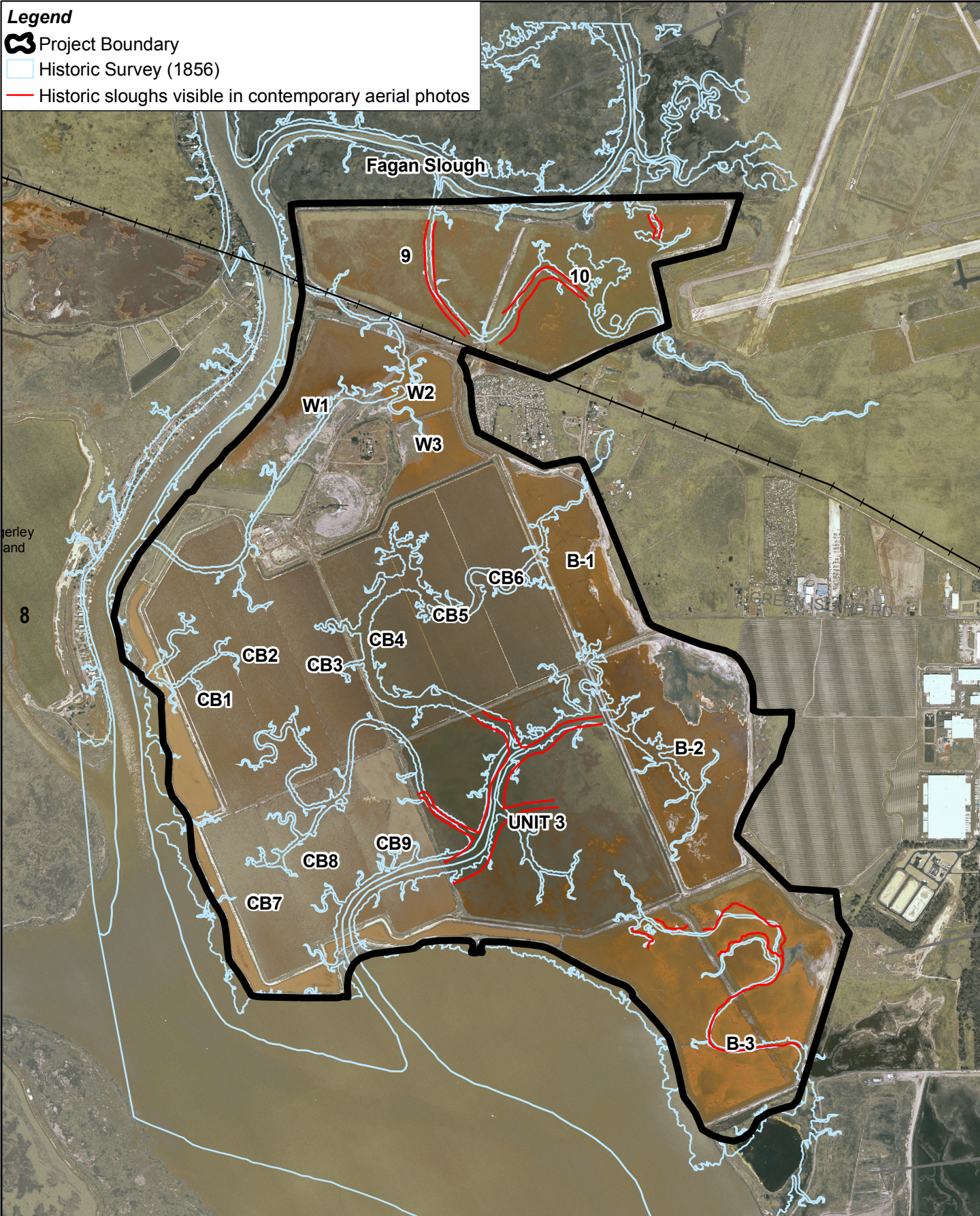


	Napa Plant Site Restoration Project	Project Layout	Figure 2
	26815044		

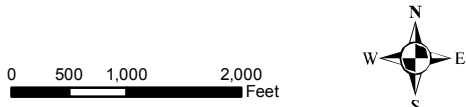
URIS Corporation L:\Projects\Napa_Plant_Site_26815044\MXD\Current Working Documents\draft_order_041607\Fig_2_Project_Layout.mxd Date: 4/16/2007 1:26:49 PM Name: smlewis0


Legend

-  Project Boundary
-  Historic Survey (1856)
-  Historic sloughs visible in contemporary aerial photos



Source: Orthophotos of Napa County, April, 2004; US Coastal Survey, 1856



	Napa Plant Site Restoration Project	Project Area with Historic Survey (1856)	Figure 3
	26815044		

URS Corporation L:\Projects\Napa_Plant_Site_26815044\IMXD\Current Working Documents\draft_order_041607\Fig_3_Project_Area_with_Historic_Survey.mxd Date: 4/16/2007 1:27:04 PM Name: smlewis0