

Conditional Waiver of Waste Discharge Requirements Order No. R1-2015-0051 for Mello 3/Llano Oaks Dairy



Item 7

November 19, 2015

Cherie Blatt

**North Coast
Regional Water Quality
Control Board**

Presentation Outline

1. General Dairy Program Overview

- Steps to Open a New Dairy

2. Mello 3/Llano Oaks Dairy

- History of Dairy Property
- Cow Numbers
- Maps/Photos

3. Proposed Individual Waiver

- Similar to 2012 General Waiver
- California Environmental Quality Act Steps
- Recommend Adoption with Errata

General Dairy Program Overview

- **2012 General Dairy Program – 3 Permit Types**
 - **NPDES Concentrated Animal Feeding Operation (CAFOs)**
 - R1-2012-0001
 - **General Waste Discharge Requirements**
 - R1-2012-0002
 - **General Conditional Waiver of WDRs**
 - R1-2012-0003
- **Only for Existing Dairies**

**Notice of Exemption under
California Environmental Quality Act (CEQA)**

Steps to Open a New Dairy

- **Regional Board inspection, recommendations to start process**
- **Prunuske Chatham Consulting assisted in Initial Study per CEQA**
- **Regional Water Board drafted Individual Waiver and Mitigated Negative Declaration**
- **State Clearinghouse Sept. - Oct. 2015**

Mello 3/Llano Oaks Dairy

- **Located 3915 Llano Road, Santa Rosa**
- **1977 to 2005: Nommsen Dairy**
- **2005-2007: Nommsen raised young cattle**
- **2008-Present: Mello leases pastures/barns for dry cows and heifers**
- **2015 Mello ready to re-open dairy on leased property**

Mello 3/Llano Oaks Dairy Cattle Numbers

Date	Maximum Herd Size	Dairy Cattle Type	Acres	
Current	200	Dry Cows, Heifers, Calves	About 100 acres	
Future Project	370	Mature Dairy Cattle (Milking plus Dry Cows)		
	287	Other Dairy Cattle (Heifers, Calves, Bulls)		
	400	Total All Dairy Cattle, not to exceed.	6	

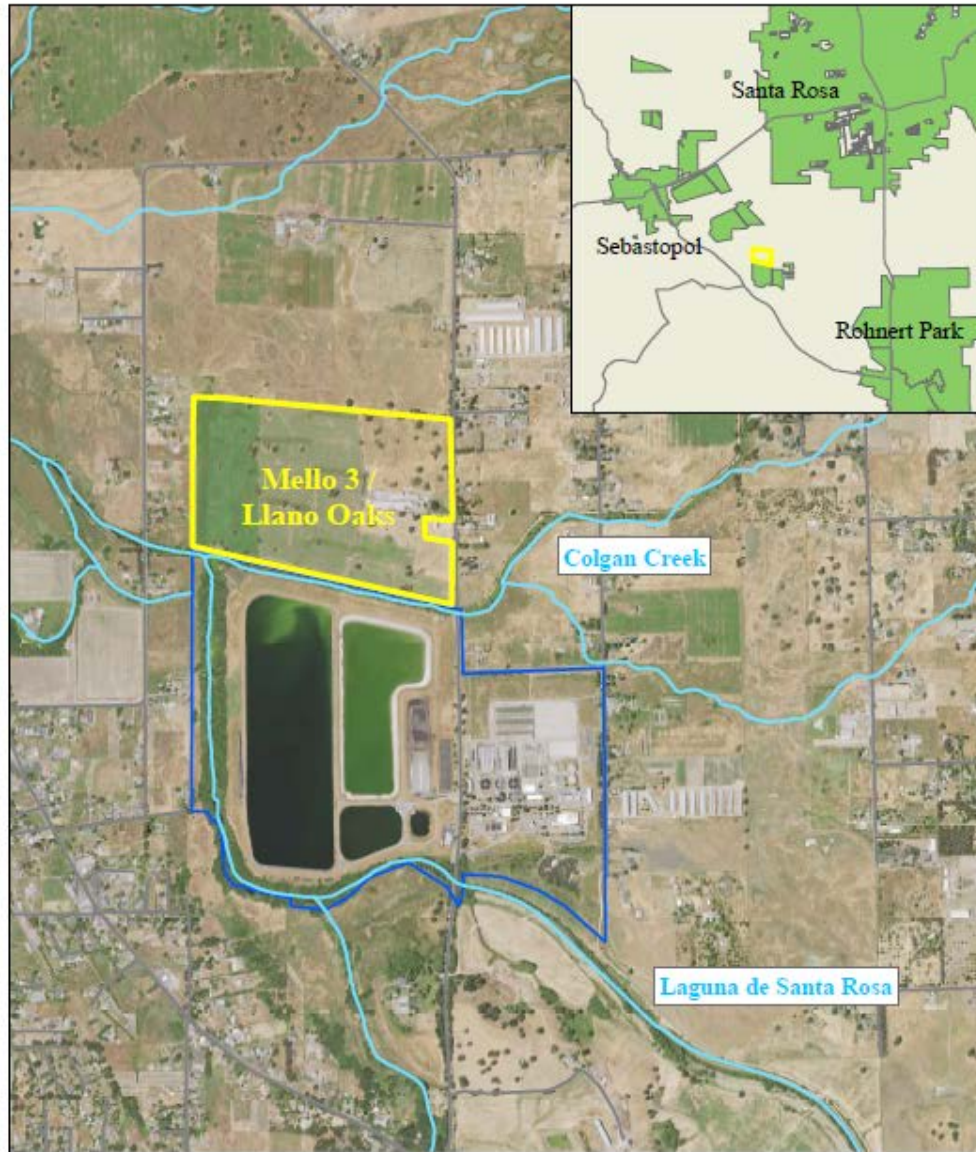


Figure 1 - Location Map
Mello 3/Llano Oaks Dairy

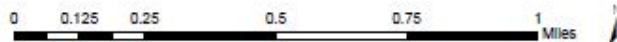
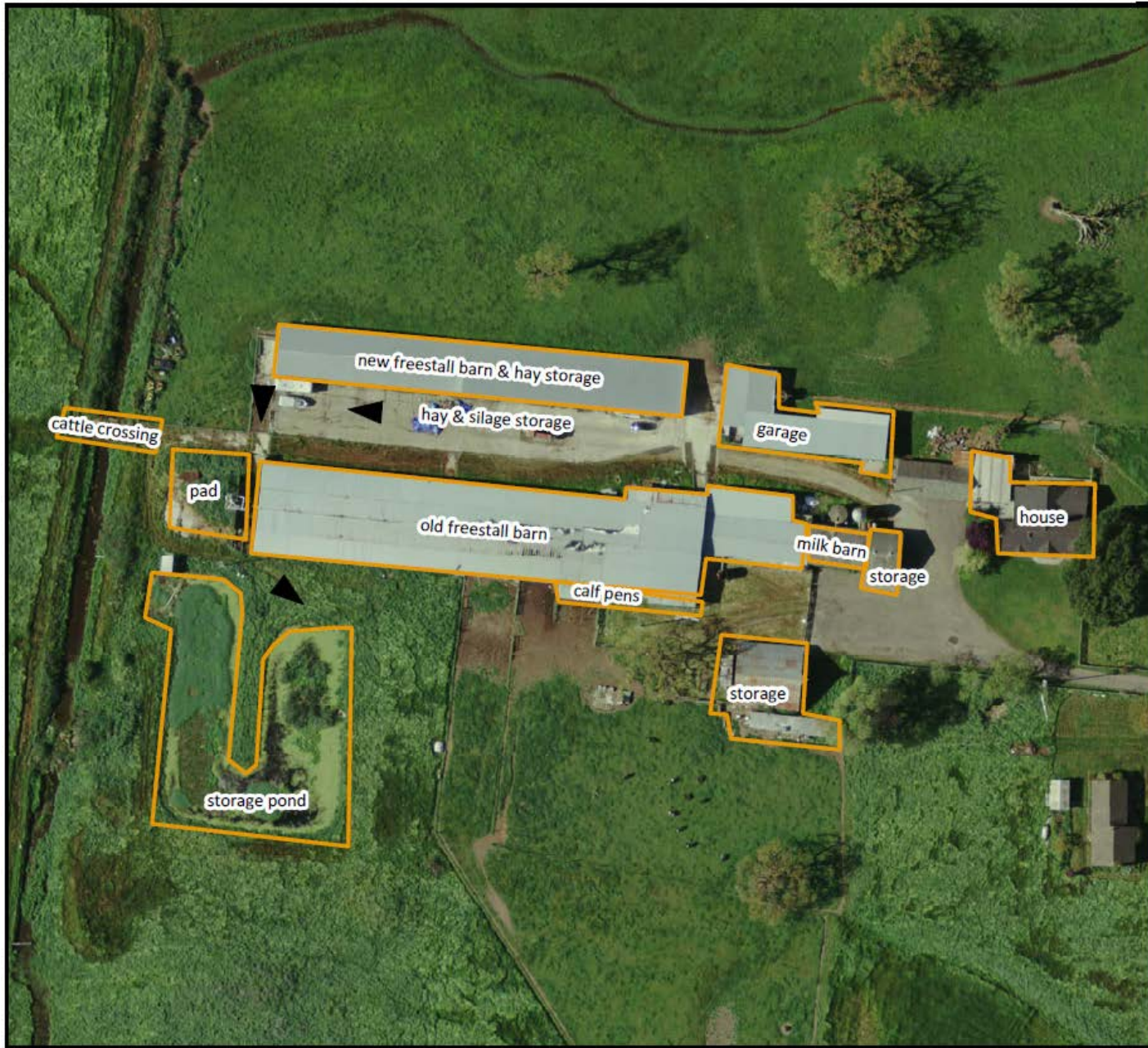
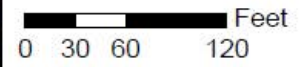


Figure 2
Mello 3/
Llano Oaks
Dairy Site Map



Legend

- Mellos Dairy Structures
- Field Flow



PRUNUSKE CHATHAM, INC.

Map Created June 12, 2015
Based upon:
Sonoma RCD March 20, 2015

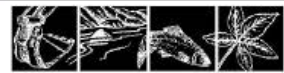
Figure 3
Mello 3/
Llano Oaks
Field Map



Legend

- tributaries
- pipeline
- streams
- storage pond
- Mello 3/ Llano Oaks
- ▶ Field Flow

0 125 250 500 Feet



PRUNUSKE CHATHAM, INC.

Map Created June 12, 2015

Based on:

Sonoma RCD March 20, 2015









Proposed Individual Waiver

- Consistent with 2012 General Waiver
- With Additional:

1. Riparian Protection Measures

- Monitoring and Reporting Program (pages 3&7)
- Inspect, photograph, and report protection
- Develop and implement protection measures if lacking

2. Nutrient Management Plan Requirement

- Attachment D - Waiver
- Due 2016

Reporting Submittals

Requirement	Timing
Water Quality Plan	2016
Nutrient Management Plan	2016
Annual Report	November 30, 2016 +
Surface Water Monitoring	3 times /winter
Groundwater Monitoring	4 samples for 2 years
Annual Fees (200 cows milk + dry)	Due each December

Public Comment Period Per CEQA

1. Proposed Individual Waiver

2. Mitigated Negative Declaration

“Project will not have a significant effect on the environment with incorporation of mitigations.”

3. Initial Study

4. Notice of Public Comment

30 day public review. No comments received.

Staff Initiated Changes to Draft 2015 Waiver

1. Added Waiver Finding 7 below “d.”:

“The new dairy may be required to enroll in a revised Waiver or another permit along with the dairies under the expiring 2012 Waiver.”

2. Moved Riparian Protection and Monitoring:

From Waiver page 9, paragraph 18

To Monitoring and Reporting Program page 3, Section I. A. 7.

Staff Recommendation

Adoption of

1. Order R1-2015-0051

- **With Errata**

2. Mitigated Negative Declaration

Questions and Public Comment

