

**Waste Discharge Requirements
Order No. R1-2016-0013
for
JH Ranch Wastewater Treatment Facility**

Item 4

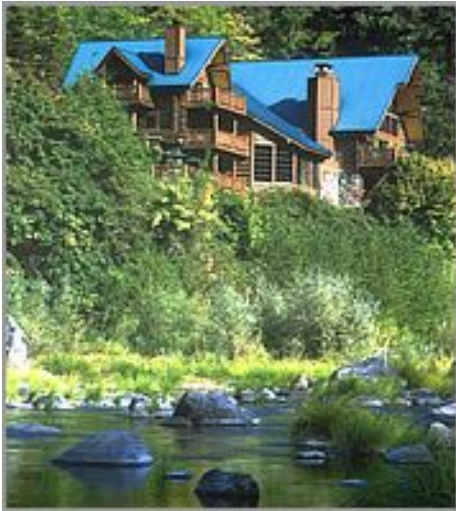
April 7, 2016

Charles Reed and Roy O'Connor

North Coast Regional Water Quality Control Board

JH Ranch

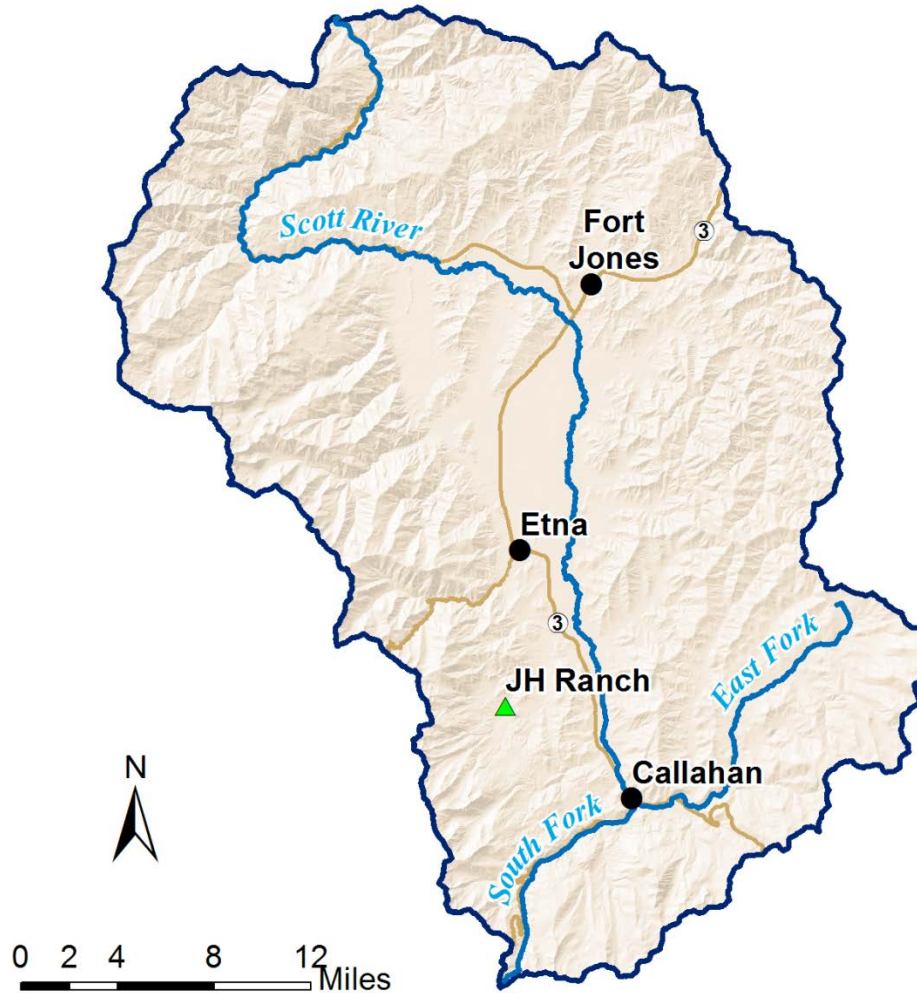
- Faith-Based Leadership Camp
- Outdoor Adventures/Family Programs/Retreats
- On-site Accommodations





Facility Location

Scott River Watershed



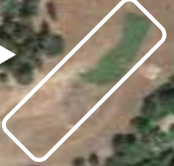
Wastewater Treatment Facility

- Existing Facility
- Design Flow: 45,000 gallons per day
- Multi-stage Activated Biological Treatment Process (MSABP)
- Effluent Limitations
 - BOD/TSS: < 10 mg/L
 - Total Nitrogen: < 10 mg/L
- Leachfield and Subsurface Drip Irrigation Disposal Systems





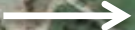
Leachfield



WWTF



Subsurface
Drip Field



JH Ranch

Lake Creek

Homestead Ln

Homestead Ln

French Creek

French Creek Rd

French Creek Rd

French Creek

French Creek Rd

Homestead Ln

Miners Creek Rd

Miners Creek Rd

Old Mill Ct

Miners C

Homestead Ln

French



Permit Requirements

- Prohibition of Wastewater Flow Exceeding 45,000 gallons per day
- Prohibition of Surfacing Effluent
- Effluent Limitations (BOD, TSS, pH, Total Nitrogen)
- Routine Effluent Monitoring and Reporting
- Certified Wastewater Treatment Plant Operator



Technical Report and Special Study

- Facility Plan
 - Identifies planned repairs, upgrades, and/or new construction for anticipated future flows
 - Submit within 3 months after permit adoption
- Hydrogeological Study
 - Investigate fate and transport of wastewater pollutants
 - Assess impacts to groundwater and surface water
 - Submit within 6 months after permit adoption for Executive Officer approval
 - Summarize work performed within 24 months of workplan approval



Public Notice and Comments

- Opened for public comment from August 26 through September 26, 2015
- Public hearing was rescheduled to April 2016 Board Meeting in Eureka



Comments and Staff Responses

- County of Siskiyou Comments:
 - Request confirmation of no increase in treatment capacity
 - Request groundwater monitoring wells installation
- Staff Response:
 - Order includes a discharge flow prohibition of 45,000 gpd
 - Order requires Hydrogeologic Study



Comments and Staff Responses

- Local Residents Comments:
 - Noise and odor concerns
 - Concern about impact of discharge on French Creek
- Staff Response:
 - Impacts minimized by proper operation and maintenance
 - Hydrogeologic Study should confirm protection of beneficial uses of French Creek



Public Comments and Staff Response

- Friends of French Creek Comments:
 - Concerns about efficacy of wastewater treatment system
 - Expansion allowed thus CEQA Categorical Exemption not valid
 - Cumulative environmental impacts assessment needed
 - Concerns about impacts to groundwater and surface water
- Staff Response:
 - Proposed Order establishes requirements to ensure proper operation and maintenance by licensed operator
 - Proposed Order does not authorize expansion-CEQA exemption is valid and no cumulative impacts assessment needed
 - Hydrogeologic Study is required to confirm water quality protection



Staff Recommendation:
Adopt Permit as Proposed