

## **Item No. 3**

**Public Hearing to consider adoption of Order No. R1-2016-0002  
General Waste Discharge Requirements (WDRs) and Order No.  
R1-2016-0003 Conditional Waiver of WDRs for Discharges of  
Wine, Beverage, and Food Processor (WBFP) Waste to Land and  
Associated Mitigated Negative Declarations**

**January 28, 2016**

**North Coast Regional Water Quality Control Board**

**Rachel Prat**





# Presentation Outline

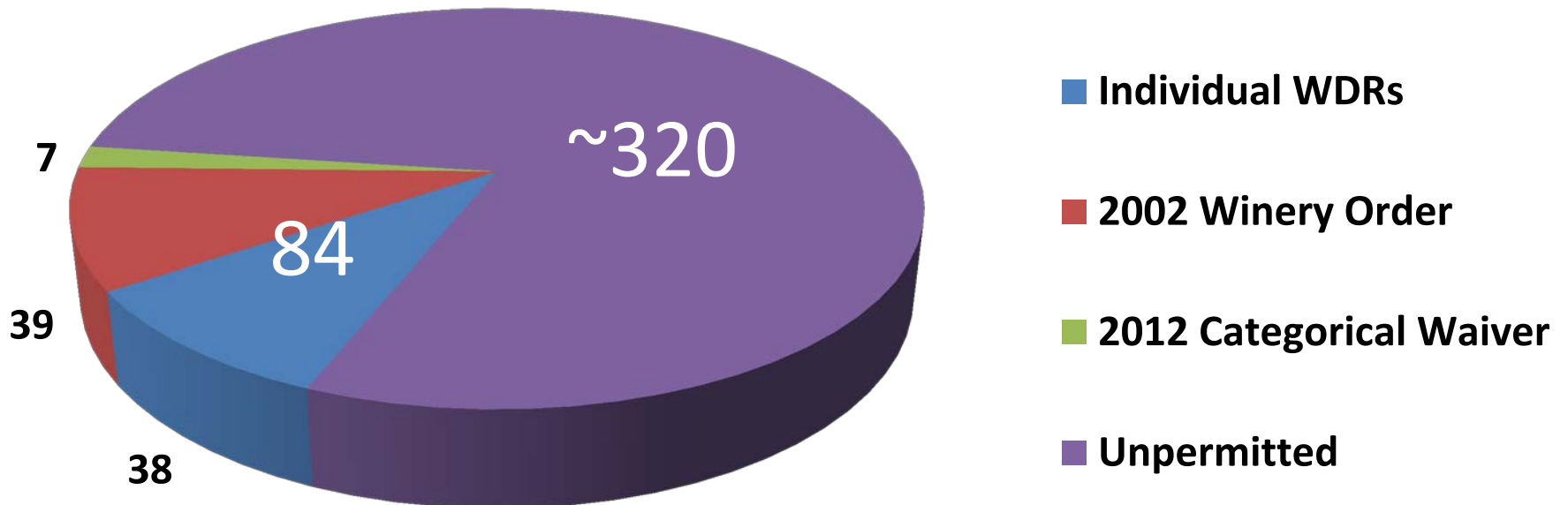
---

---

- **Background**
- **Overview of Permits**
- **Outreach**
- **Public Comments and Response**
- **Summary**
- **Staff Recommendations**

# Background

## Processing Waste Dischargers





# Permits Overview

---

---

- **Replace 2002 Winery Order**
- **Establish a Streamlined Permitting Process**
- **Eligible types of Processors**
  - **Wineries**
  - **Breweries**
  - **Cider houses**
  - **Non-alcoholic beverage producers**
  - **Distilleries**
  - **Cut & Wrap meat processors**
  - **Fruit and vegetable processors**
  - **Dairy product manufacturers**

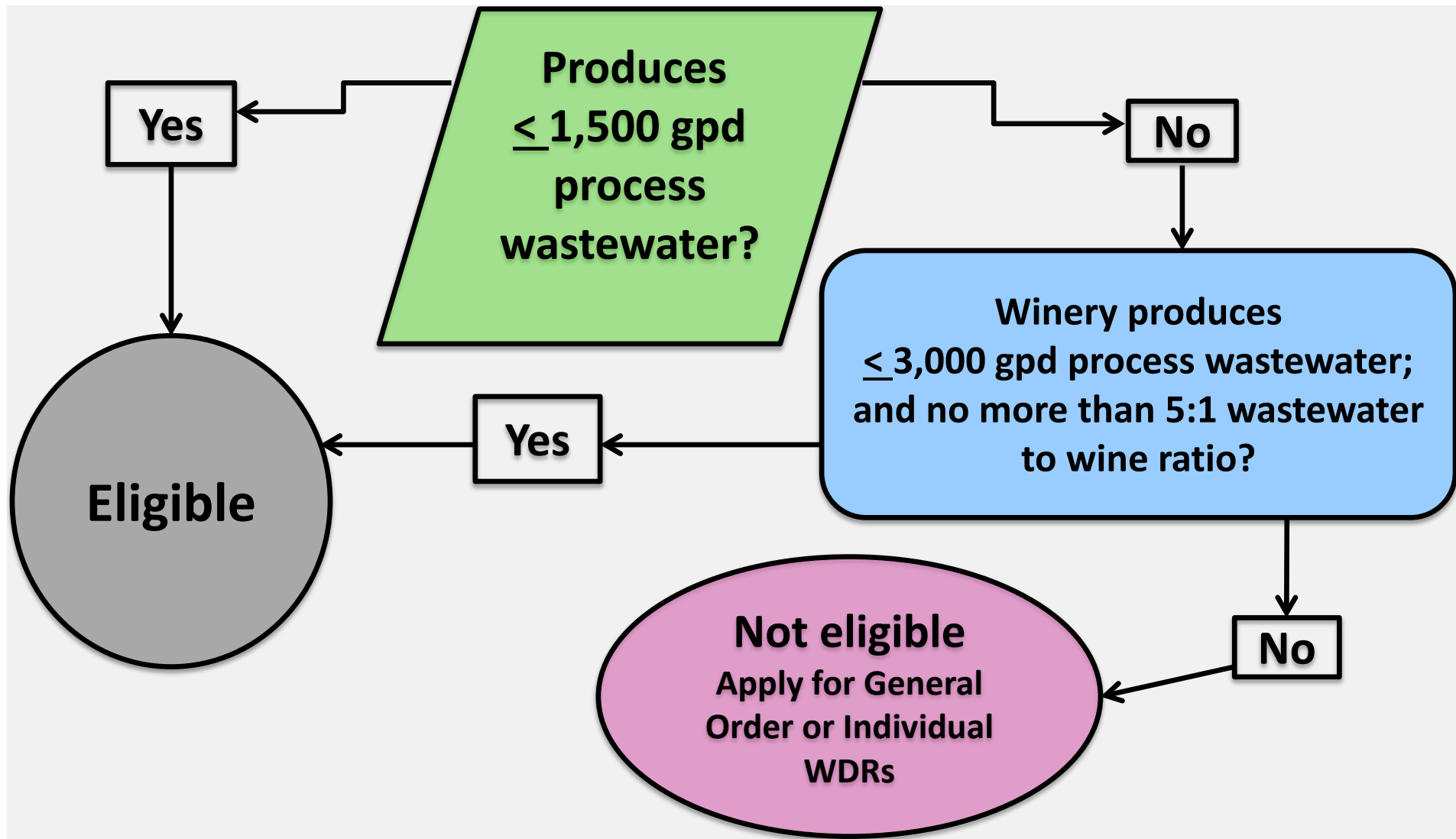


# Conditional Waiver Overview

---

- Discharges to land of process wastewater and reuse of process solids
- No effluent monitoring
- No groundwater monitoring
- Annual Reporting of:
  - production volume
  - wastewater disposal and solids reuse volume
  - compliance assessment

# Conditional Waiver Eligibility





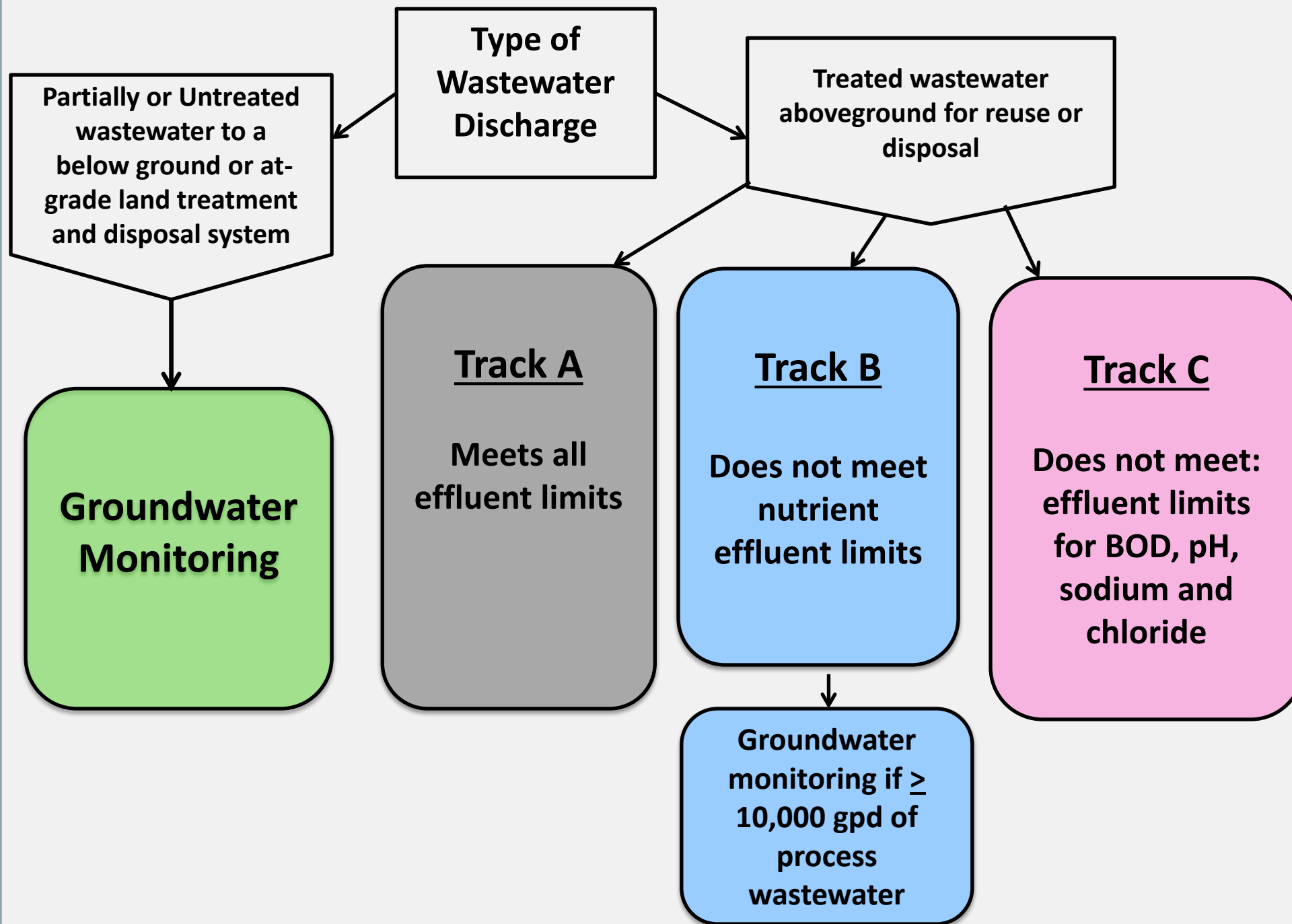
# General Order Overview

---

---

- Discharges to land of process wastewater and reuse of process solids
- Either effluent and/or groundwater monitoring
- Allowance of agronomic rate application for nutrients
- Semiannual Reporting:
  - production volume
  - disposal volume
  - effluent and/or groundwater monitoring
  - operations & maintenance
  - compliance assessment









## **Types of Wastewater Discharge**

**Partially or Untreated  
wastewater;  
to a below ground or at  
grade land treatment and  
disposal system**

**Comply with Groundwater  
Limits**

**Treated wastewater;  
aboveground for reuse or  
disposal**

**Comply with Groundwater  
Limits**



**Partially or Untreated wastewater;  
discharged below ground or at grade  
for land treatment and disposal**



**Must meet Groundwater Limitations**

- Verified with groundwater monitoring
- Apply process solids at agronomic rate in accordance with a Facility-specific Nutrient Management Plan (FNMP)



**Treated; discharged aboveground for reuse or disposal**



**Track A**

**Meets all effluent limits**

(BOD, pH, ammonia, nitrate, nitrite, sodium, and chloride)

- Conduct monthly effluent monitoring
- Apply process solids at agronomic rate per FNMP



**Treated; discharged aboveground for reuse or disposal**

**Track B**

**Does not meet some effluent limits  
(Ammonia, Nitrite, and Nitrate)**

- Conduct monthly effluent monitoring
- Apply treated wastewater at agronomic rate per FNMP
- Apply process solids at agronomic rate per FNMP

**If produces 10,000 gpd or more of process wastewater:**

- Groundwater monitoring to verify agronomic rate is not causing exceedance of groundwater limitations



**Treated; discharged aboveground for reuse or disposal**



**Track C**

**Does not meet effluent limits  
(BOD, pH, sodium, and chloride)**

**Within 6 months of General Order adoption either:**

- Apply for individual WDRs or
- Modify treatment to meet effluent limits



# Permit Differences

	2002 Winery Order	Proposed Conditional Waiver	Proposed General Order
Facility Type	All commercial wineries	Wine, beverage and food processors	Wine, beverage and food processors
Eligibility	Wine production threshold	Wastewater production threshold	Water quality threat
Effluent Monitoring	Yes-Treated Effluent	No	Yes – Treated Effluent
Groundwater Monitoring	No	No	Yes – Land treatment systems
Reporting	Quarterly	Annual	Semiannual
Nutrients	No	Yes	Yes
Salinity	No	No	Yes



# Mitigated Negative Declarations

---

- **Purpose:**
  - Satisfy CEQA requirement
  - Evaluate reasonably foreseeable environmental impacts
  
- **30-day Public Comment Period**
  
- **Distributed to:**
  - State Clearing House
  - County Clerks





# Public Outreach

---

---

- **In 2014 staff contacted:**
  - **Wine, beverage and food processing facilities**
  - **Industry Affiliations**
  - **County Departments**
  - **Resource Conservation Districts**
  - **UC Cooperative Extension**
- **Initial 45-day Public Comment Period in 2014**
- **6 Meetings with Wine Industry group**
- **2015 Public Comment Period**



# Public Comment on 2015 Drafts

---

## ■ Received 2 Comment Letters

- The Wine Institute
- Brelje & Race Consulting Engineers

## ■ Key issues

- Eligibility and Applicability of Requirements
- Effluent and Groundwater Limits
- Groundwater Monitoring for Septic Tank Systems
- Cost of Reporting



# Public Comments and Staff Responses

---

---

- *Comment: Eligibility for Conditional Waiver and Specific Requirements for WDRs*
  
- **Response:**
  - Revised general Order
  - Developed flow chart and reference guide



# Public Comments and Staff Responses

---

---

- *Comment: Remove 60 mg/l Sodium Effluent Limit, or replace with 115 mg/l limit*
  
- **Response:**
  - 60 mg/l limit is protective of municipal and domestic supply (MUN) beneficial use of groundwater
  - 115 mg/l limit is likely protective of agricultural supply beneficial use but not protective of MUN



# Public Comments and Staff Responses

---

---

- *Comment: Question the need for and the cost of Groundwater Monitoring*
- **Response:**
  - Most low-flow facilities will likely be eligible for Conditional Waiver coverage – which does not require groundwater monitoring
  - Only high-flow facilities that rely on the soil matrix for treatment, and are covered under the General Order - require groundwater monitoring



# Public Comments and Staff Responses

---

---

- *Comment: Cost of Quarterly Reporting*
- **Response: Staff reduced the reporting frequency from quarterly to semiannually**



# Summary

---

---

## Increased Groundwater Protection

- **Expands and Streamlines the Permitting Process**
  - **Efficient and consistent regulation**
  - **Address 300+ unpermitted facilities**
- **Addresses Nutrient and Salinity**
  - **Effluent limits, agronomic rate, and groundwater limits**
  - **TDS monitoring and chemical usage reporting**
- **Requires Groundwater Monitoring**





# **Staff Recommendations**

---

---

**Adopt Order No. R1-2016-0002 General Waste Discharge Requirements (WDRs) and Order No. R1-2016-0003 Conditional Waiver of WDRs for Discharges of Wine, Beverage, and Food Processor (WBFP) Waste to Land and Associated Mitigated Negative Declarations**

# Questions?

