



City of Walnut

LOS ANGELES COUNTY MS4 PERMIT IMPLEMENTATION &
EVALUATION OF MONITORING DATA
PUBLIC WORKSHOP
MAY 2018

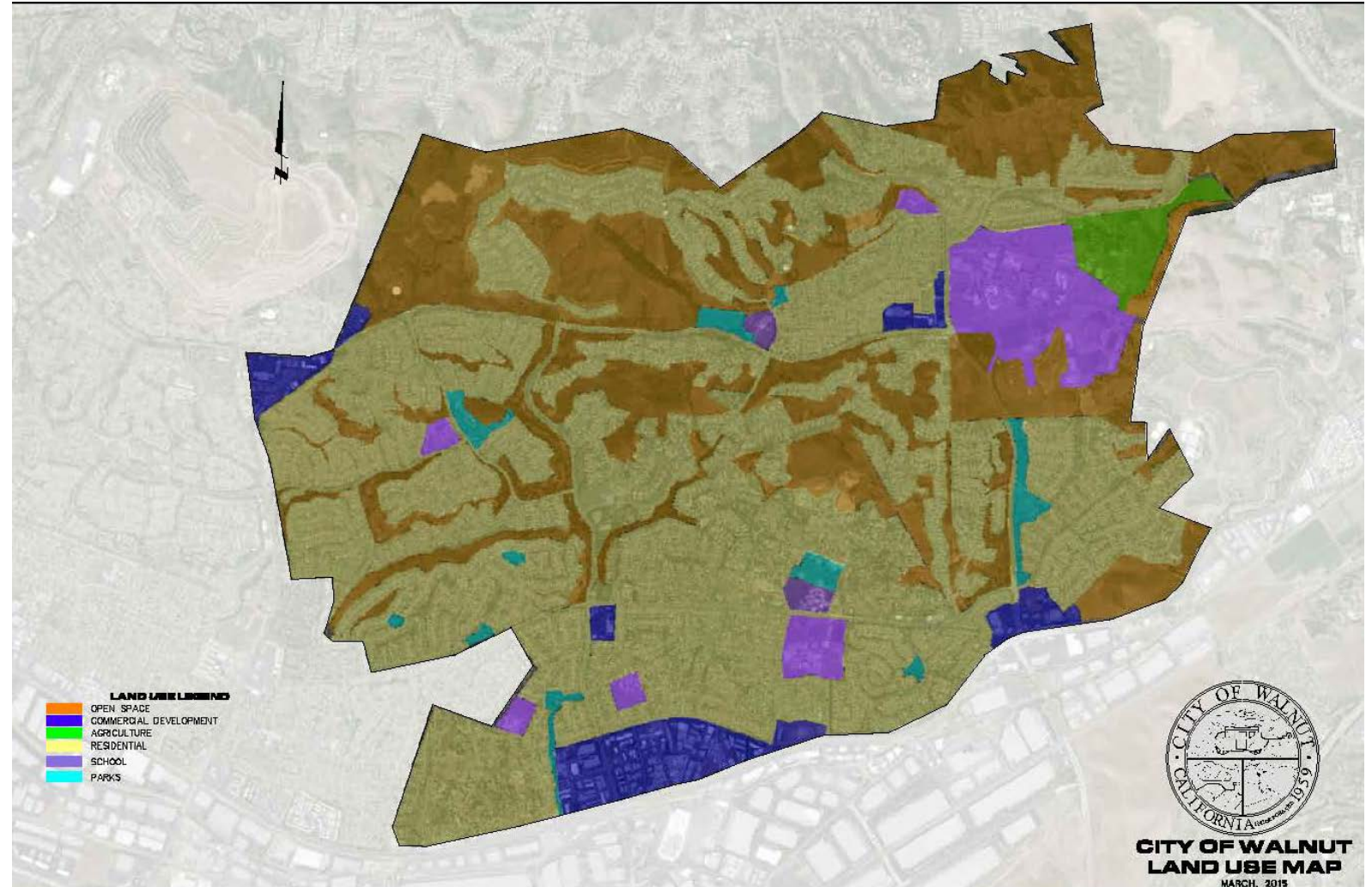
Introduction

- ▶ Jurisdictional area of 8.9 square miles located in the San Gabriel Valley region of Los Angeles County north of State Route 60 and west of State Route 57



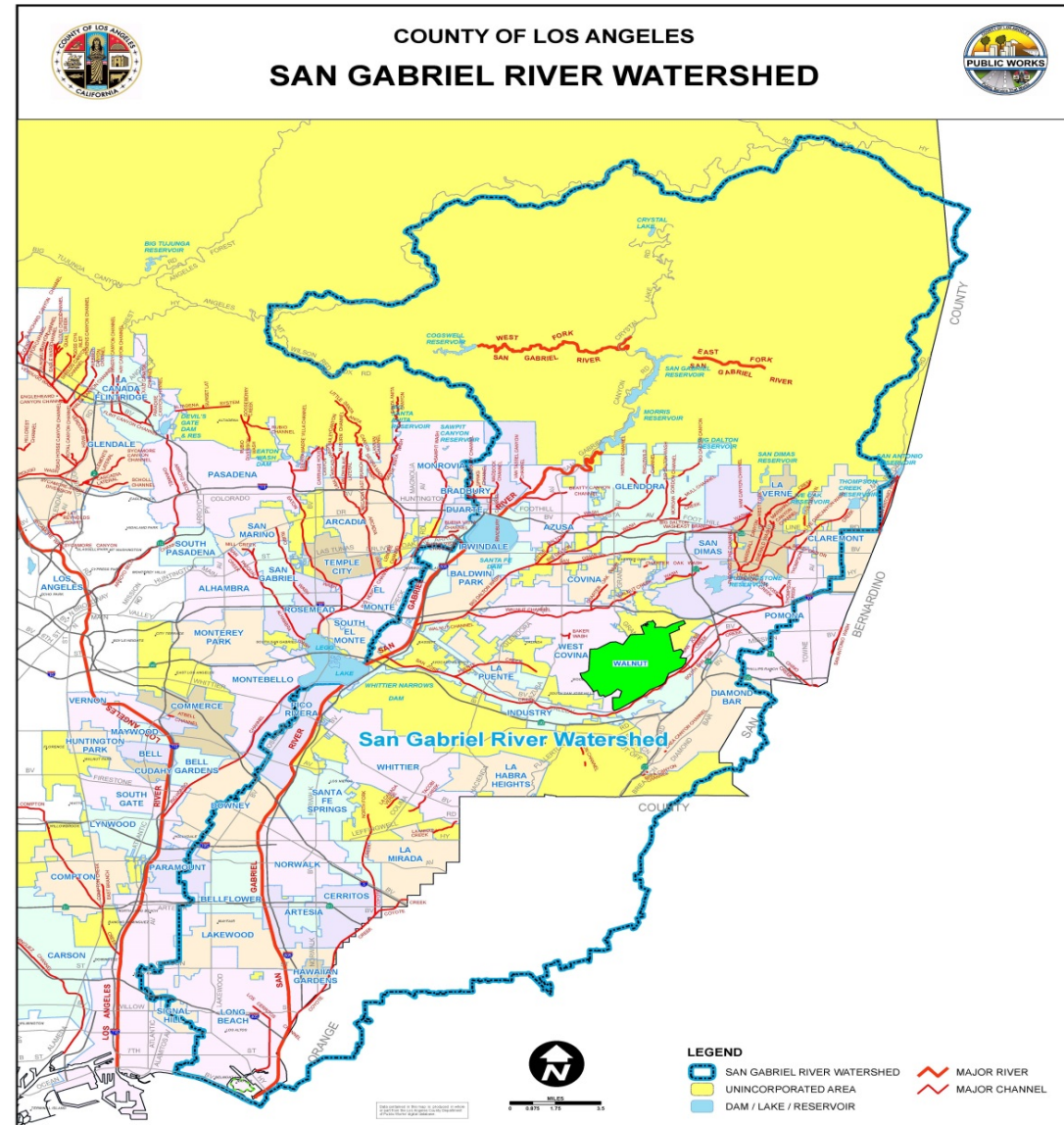
Watershed Land Use

Watershed Land Use	
Land Use	Acres (%)
Residential	65%
Open Space	29%
Agriculture / Other	1.5%
Commercial / Industrial	4.5%



Watershed Characteristics

- ▶ South Tributary
 - Reach 1 of the San Jose Creek
- ▶ North Tributary
 - Walnut Creek Wash
- ▶ Both Connect to Reach 3 of the San Gabriel River




Water Quality Priorities

Watershed Management Area Impairments

Pollutant Category	Water Body Pollutant	Weather Conditions	Sample Results In line With Base Line Modeling (RAA) at Outfalls
1	Selenium	Dry	✓
1	Lead	Wet	✓
1	Bacteria	Dry / Wet	✓



Water Quality Monitoring Program

- ▶ **Outfall Monitoring – City of Walnut IMP**
 - Wet and Dry Weather Sampling
 - Dry Weather Source Assessment at all Outfalls
 - Upstream Monitoring and Source Assessment
 - ▶ **Receiving Water Monitoring – Upper SGR Watershed CIMP**
 - ▶ **Harbor Toxics TMDL– Lower SRG Toxics Monitoring Program**
- 

Minimum Control Measures (MCM)

- ▶ Street Sweeping
 - Frequency: Bi-weekly
- ▶ Public Education & Public Outreach
 - Community Events
 - Website
 - News Letters
 - Park Informational Kiosk
 - School Outreach
- ▶ Commercial/Industrial Inspections
 - Round one and two completed
- ▶ Pet Waste Stations
 - 33 Total pet waste stations, 10 installed since WMP Approval

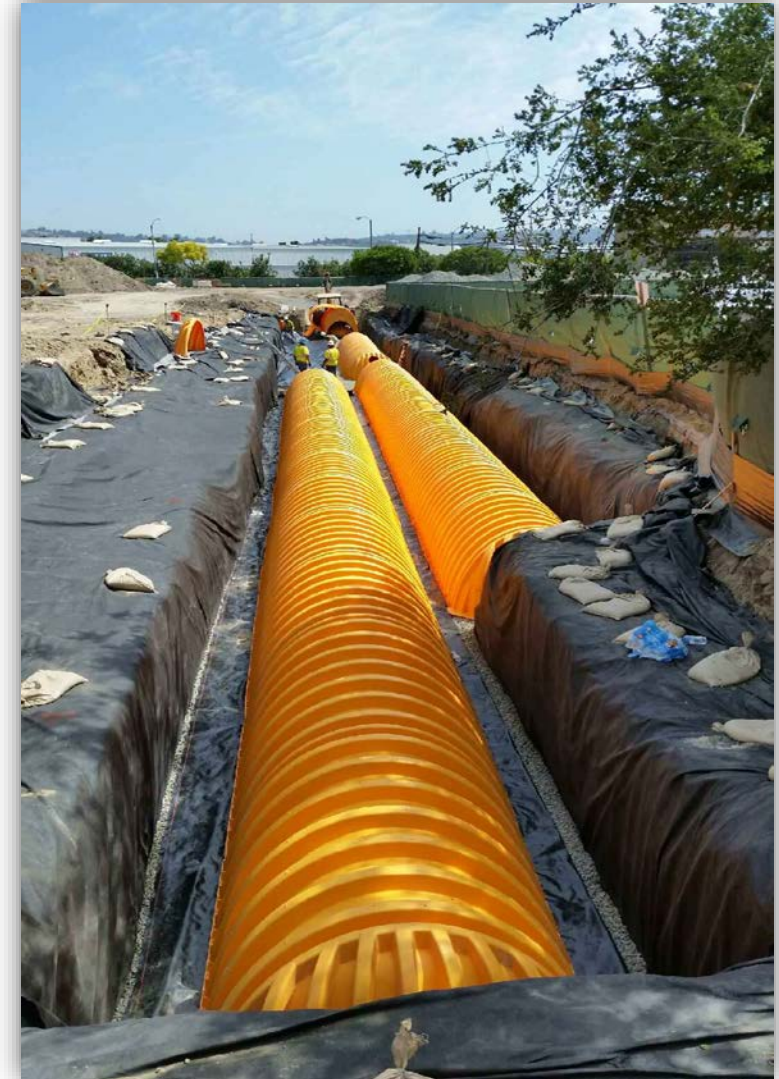


Minimum Control Measures (MCM)

- ▶ LID (Low Impact Development)



Bio-filtration Units - The Peak, CalAtlantic



Infiltration Storage- Cornerstone, Shea Homes

Walnut values natural open space and strives to protect these valuable local resources...the City has more than nearly 1,000 acres of protected lands.

