

**2017 Los Angeles River Trash TMDL Annual Report
for the City of Alhambra**

Prepared for the Los Angeles Regional Water Quality Control Board
Submitted as part of the 2016-2017 Individual MS4 NPDES Annual Report

December 15, 2017

December 15, 2017

City of Alhambra Trash TMDL Annual Report

Table of Contents

1. Background	2
2. Compliance Status	2
3. Full Capture Systems, Partial Capture Systems, and Institutional Controls	2
4. Daily Generation Rate (DGR) Study	2
4.1 Study method	3
4.2 Collection routes	3
4.3 Field pictures	7
5. Mass Balance Approach	9
6. Trash TMDL Reporting Forms	9

December 15, 2017

City of Alhambra Trash TMDL Annual Report

1. Background

The City of Alhambra (City) is complying with the Los Angeles River Trash TMDL (Trash TMDL) through an alternative compliance option, as allowed by the June 11, 2015, Los Angeles Regional Water Quality Control Board (Regional Board) Amendment to the Trash TMDL. The City is employing a combination of full capture systems, partial capture systems, and institutional controls—all properly sized, operated, and maintained—to achieve a reduction in trash discharge of 99% or greater from the baseline load. The percent reduction is determined through a mass balance approach, based on a daily generation rate (DGR) study as described in the Regional Board's August 9, 2007, Trash TMDL Staff Report for the Los Angeles River Watershed.

2. Compliance Status

The Regional Board's mass balance worksheets (Reporting Forms) were used to calculate the percent reduction in trash discharge for reporting year 2016-2017. They are discussed in Section 5 and included in Section 6 of this report.

The City will continue to properly maintain its trash capture devices and institutional controls and anticipates a compliance levels above 99% in future reportings years. The City requests the Executive Officer's concurrence to reduce the frequency of DGR studies from annually to once every five years. The City will report annually on the continued implementation at the same level of capture devices and institutional controls and any drastic land use changes that occur.

3. Full Capture Systems, Partial Capture Systems, and Institutional Controls

A complete list of trash capture devices is included in Section 6. Institutional controls include littering ordinances, quarterly catch basin cleaning, weekly and special event street sweeping, public education and stormwater pollution prevention outreach, residential curbside recycling, hazardous and electronic waste roundups, and bulky item collection.

4. Daily Generation Rate (DGR) Study

The City's trash discharge for the reporting year was estimated using a mass balance approach based on a trash DGR calculated for land use areas within the City. The representative land use areas studied were commercial, high and low density residential, industrial, public facilities, and open space. The DGR was calculated by weighing trash collected over a 30-day period in the summer along representative street sweeping collection routes within the study areas, then extrapolating that weight across the City. See Figures 1-6 for the designated routes. The results of the DGR study are included as part of the Regional Board Reporting Forms in Section 6.

December 15, 2017

City of Alhambra Trash TMDL Annual Report

4.1 Study method

Trash¹ was manually picked up with a reaching tool along the collection routes. (See Figure 7.) The manual pickup was conducted one day prior to street sweeping for each route. Catch basins along the study routes were covered to prevent trash from being swept into them. (See Figure 8.) Only trash a quarter of an inch or larger was collected. Collected trash in each area was weighed using a calibrated digital scale. (See Figure 9.) Five gallon buckets were used to estimate the volume. The trash was then separated and quantified by material type. A standard health and safety plan was followed at all times. The health and safety plan is available upon request.

4.2 Collection routes

Figures 1-6 show the collection routes for the DGR Study. Each figure includes a brief description.



Figure 1. High Density Residential Area Route. Collection occurred Monday. Route includes the side of the street swept Tuesday only.

¹ Following the Los Angeles River Trash TMDL, "trash" is defined in California Government Code Section 68055.1(g) as "...all improperly discarded waste material, including, but not limited to, convenience food, beverage, and other product packages or containers constructed of steel, aluminum, glass, paper, plastic, and other natural and synthetic materials, thrown or deposited on the lands and waters of the state, but not including the properly discarded waste of the primary processing of agriculture, mining, logging, sawmilling or manufacturing."

December 15, 2017

City of Alhambra Trash TMDL Annual Report

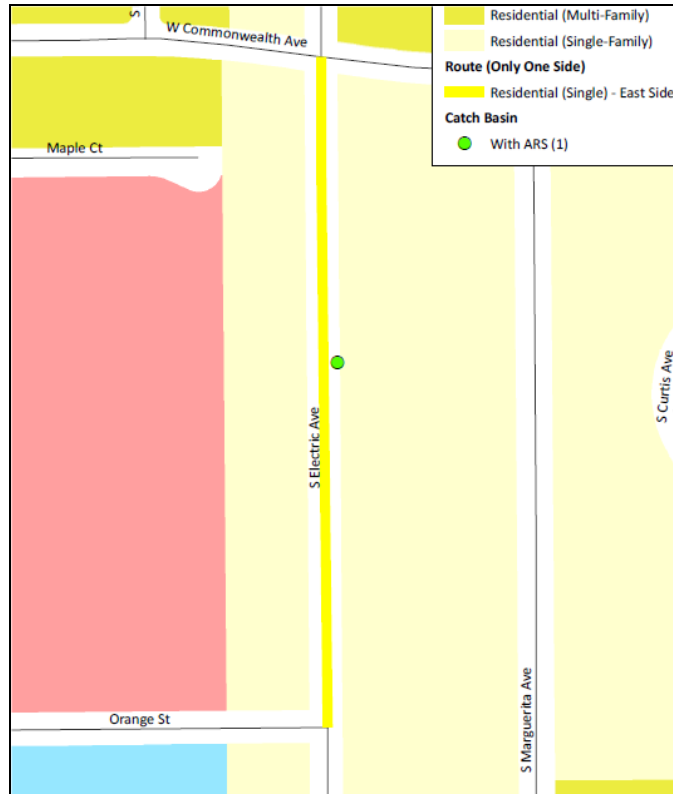


Figure 2. Low Density Residential Area Route. Collection occurred Tuesdays. Route includes the side of the street swept Wednesday only.



Figure 3. Commercial Area Route. Collection occurred Mondays. Route includes the side of the street swept Tuesday only.

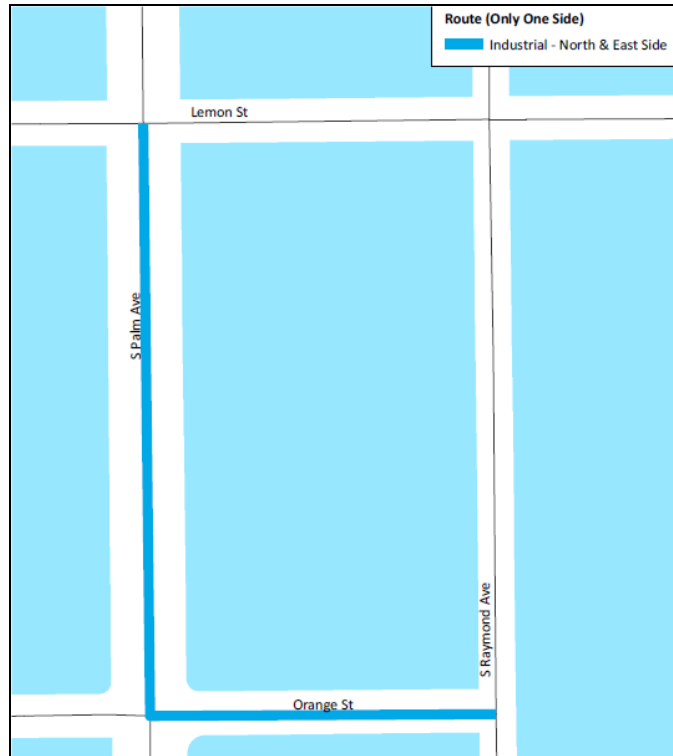


Figure 4. Industrial Area Route. Collection occurred Tuesdays. Route includes the side of the street swept Wednesday only.

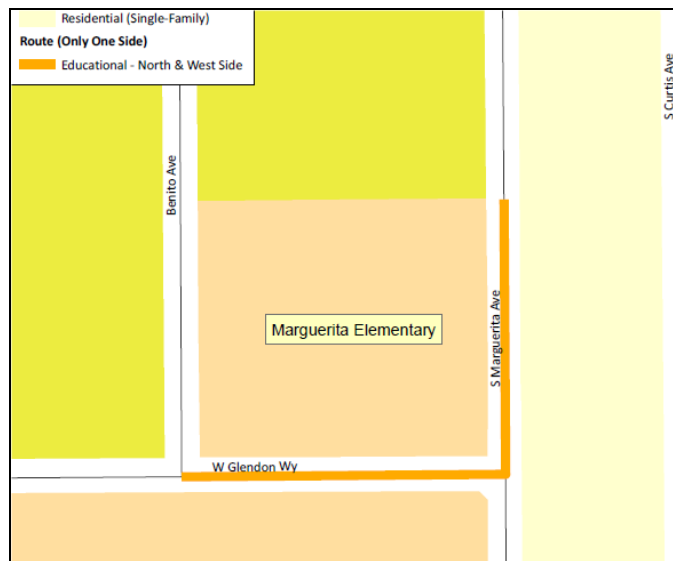


Figure 5. Public/Educational Area Route. Collection occurred on Thursday. Route includes the side of the street swept Friday only.

December 15, 2017

City of Alhambra Trash TMDL Annual Report

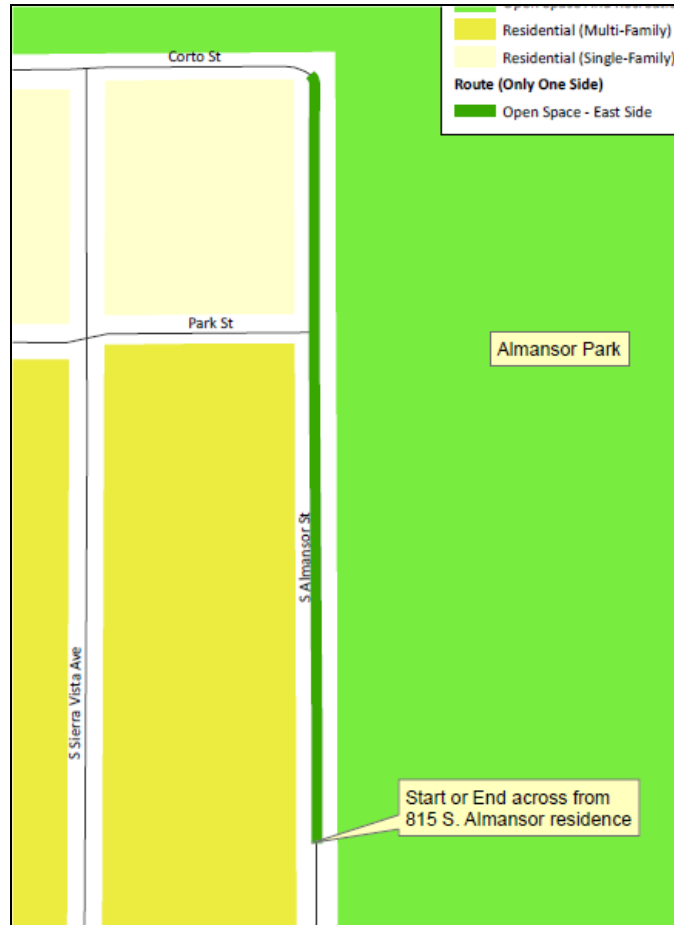


Figure 6. Open Space/Recreational Area Route. Collection occurred on Mondays. Route includes only the side of the street swept Tuesday.

4.3 Field pictures

Figures 7 -10 were taken during the 2017 DGR study. Each picture includes a brief description.



Figure 7. DGR crew member collecting trash using a reaching tool.

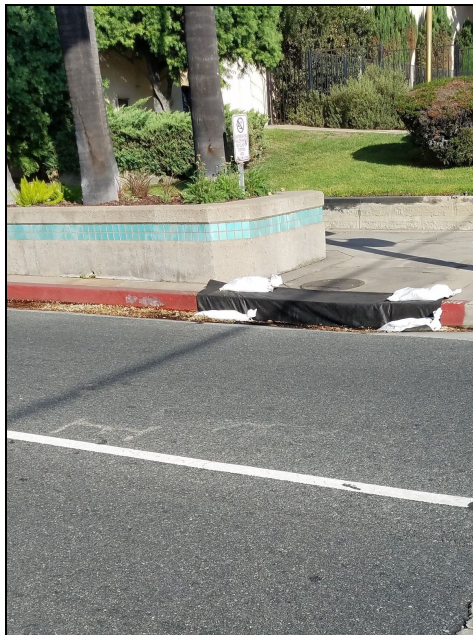


Figure 8. Covered catch basin along the Commercial Area route, on the corner of Main and Almansor, preventing trash from being swept into it.



Figure 9. DGR crew member weighing collected trash using a digital scale.

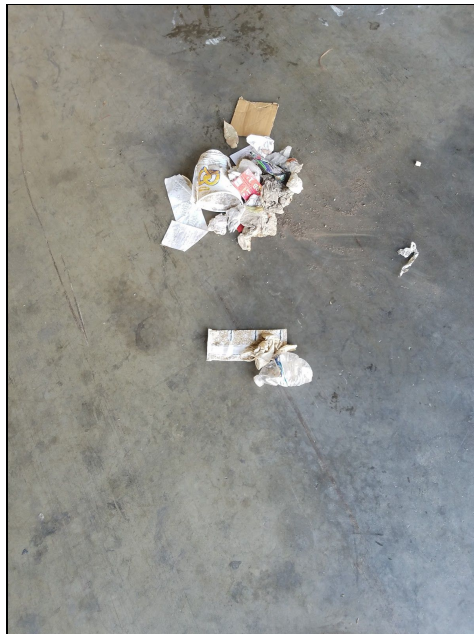


Figure 10. Sorted trash pile from the Low Density Residential Area route on 8-29-17.

December 15, 2017

City of Alhambra Trash TMDL Annual Report

5. Mass Balance Approach

The mass balance Reporting Forms provided by the Regional Board were used to calculate total trash discharge. (See Section 6.) Deviations from the Reporting Forms are noted and explained in the comments sections. This includes the following:

- The City's streets are not swept in one day. Approximately equal parts are swept Monday through Friday. Accounting for this effect results in fractional days of trash accumulation for a given storm event.

6. Trash TMDL Reporting Forms

The 2017 Trash TMDL Reporting Forms are included on the following pages.

Trash Collection for Calculation of Daily Generation Rate, DGR										
Col. 1	Col. 2	Col. 3	Col. 4	Col. 5	Col. 6	Col. 7	Col. 8	Col. 9	Col. 10	Col. 11
Land Use Category	Total Area within Jurisdiction	Representative Area for DGR Calculation	Date of Last Street Sweeping	Date of DGR Sampling	Length of Collection Period	Trash Collection from Representative Area (lb. or gal.)	Trash Cleaned Out from Catchbasin(s) within the Representative Area (lb. or gal.)	Total Amount of Trash Generated in Representative area	Total Trash Generated within Representative Area	Comments
Low Density	176.9	0.2	08/16/17	8/22/17	6	0.81	0	0.81		Low Density Residential areas swept weekly, DGR sampling collected weekly (Tuesday) by hand, and prior to street sweeping activities (Wednesday). Thus a six-day period elapsed between sweeping and collection events.
			08/23/17	8/29/17	6	0.19	0	0.19		
			08/30/17	9/5/17	6	0.69	0	0.69		
			09/06/17	9/12/17	6	0.31	0	0.31		
			09/13/17	9/19/17	6	0.50	0	0.50	64.09	
				Total Days:	30					
Commercial	34.9	0.2	8/15/2017	8/21/2017	6	0.25	0	0.25		Commercial areas swept weekly, DGR sampling collected weekly by hand (Mondays) and prior to street sweeping (Tuesdays), thus a six-day period elapsed between sweeping and collection events.
			8/22/2017	8/28/2017	6	0.50	0	0.50		
			8/29/2017	9/4/2017	6	0.81	0	0.81		
			9/5/2017	9/11/2017	6	0.44	0	0.44		
			09/12/17	9/18/17	6	0.19	0	0.19	12.12	
				Total Days:	30					
High Density	49.3	0.2	08/15/17	8/21/17	6	0.56	0	0.56		High Density Residential areas swept weekly, DGR sampling collected weekly (Mondays) by hand, and prior to street sweeping activities (Tuesdays). Thus a six-day period elapsed between sweeping and collection events.
			08/22/17	8/28/17	6	0.75	0	0.75		
			08/29/17	9/4/17	6	0.63	0	0.63		
			09/05/17	9/11/17	6	0.13	0	0.13		
			09/12/17	9/18/17	6	0.38	0	0.38	17.42	
				Total Days:	30					
Industrial	9.6	0.2	08/16/17	8/22/17	6	0.19	0	0.19		Industrial areas swept weekly, DGR sampling collected weekly (Tuesdays) by hand, and prior to street sweeping activities (Wednesdays), thus a six-day period elapsed between sweeping and collection events.
			08/23/17	8/29/17	6	0.31	0	0.31		
			08/30/17	9/5/17	6	0.25	0	0.25		
			09/06/17	9/12/17	6	0.06	0	0.06		
			09/13/17	9/19/17	6	0.06	0	0.06	1.22	
				Total Days:	30					
Public Facilities / Educational Institutions	4.3	0.2	08/18/17	8/24/17	6	1.06	0	1.06		Public & Educational areas swept weekly, DGR sampling collected weekly (Thursdays) by hand, and prior to street sweeping activities (Fridays). Thus a six-day period elapsed between sweeping and collection events.
			08/25/17	8/31/17	6	0.31	0	0.31		
			09/01/17	9/7/17	6	0.19	0	0.19		
			09/08/17	9/14/17	6	0.06	0	0.06		
			09/15/17	9/21/17	6	0.19	0	0.19	1.37	
				Total Days:	30					
Open Space / Recreation	4.6	0.2	08/15/17	8/21/17	6	0.44	0	0.44		Open Space & Recreational areas swept weekly, DGR sampling collected weekly (Monday) by hand, and prior to street sweeping activities (Tuesdays), thus a six-day period elapsed between sweeping and collection events.
			08/22/17	8/28/17	6	0.63	0	0.63		
			08/29/17	9/4/17	6	0.50	0	0.50		
			09/05/17	9/11/17	6	0.13	0	0.13		
			09/12/17	9/18/17	6	0.44	0	0.44	1.48	
				Total Days:	30					
Total Area	279.6	1.3					Total Trash (lbs)	11.94		
							DGR (lbs/day)	97.69		
Notes:	* Total collection period must equal 30 days for each representative land use area.									
Col. 1	Land Use Category - Categories based on Baseline Monitoring Program conducted by LACDPW baseline monitoring group. Alternatively, describe land use type as designated by the City.									
Col. 2	Total area of said land use within jurisdiction (fill in once in gray-highlighted row for each land use category). Total area may be accounted for using other approved measurement units, e.g. curb miles.									
Col. 3	Representative area for DGR calculation (fill in once in gray-highlighted row for each land use category). Representative area may be accounted for using other approved measurement units, e.g. curb miles. Collectively, the areas used for DGR calculation should be representative, proportionally, of the land uses within the jurisdiction and must be approved by the EO prior to the 30-day collection period.									
Col. 4	Date of last street sweeping									
Col. 5	Date of DGR sampling (direct measurement of deposited trash) - The DGR collection period(s) must fall between June 22nd and September 22nd									
Col. 6	Length of Collection Period in days - The DGR collection period must be 30 days, total, for each representative land use area									
Col. 7	Trash collection from representative area through street sweeping or other method, lb. or gal.									
Col. 8	Trash cleaned out from catchbasins within the representative area (lb. or gal.). Trash accumulated in the CBs during the DGR collection period must be included in the total trash generated.									
Col. 9	Where CBs are closed off such that no trash can enter them for the purpose of DGR sampling, this value will be zero (0).									
Col. 9	Total amount of trash generated in representative area (sum of Col. 7 and Col. 8), lb. or gal.									

Col. 10	Total Trash Generated within Representative Area (estimated in 30 day period)					
Col. 11	Provide comments, if necessary					
Note: Sampling must be conducted during any 30-day period, starting June 22nd through September 22nd of each year.						

Rainfall Station: PASADENA 2.0 SE, CA US							
Total Trash Discharged by Storm Event							
Col. 1	Col. 2	Col. 3	Col. 4	Col. 5	Col. 6	Col. 7	Col. 8
DGR	Date of Last Street Sweeping	Date of Storm Event	Precipitation Depth *	Days **	Amount of Trash Recovered from Catchbasins	Storm Event Trash Discharge	Comments
97.69	11/16/16	11/20/16	0.44	4.0		390.78	* Rainfall data was collected from the closest rainfall station.
97.69	11/20/16	11/21/16	0.27	0.9		87.92	
97.69	12/12/16	12/15/16	0.88	3.0		293.08	** The entire City of Alhambra is not swept in one day. Approximately equal parts of the City are swept Monday through Friday. As such during any given rain event, different parts of the City were swept between 1 to 7 days previously. Accounting for this effect results in fractional days of trash accumulation for a given storm event.
97.69	12/15/16	12/16/16	0.60	0.9		87.92	
97.69	12/18/16	12/21/16	0.34	2.9		283.31	
97.69	12/21/16	12/23/16	1.24	1.6		156.31	
97.69	12/27/16	12/30/16	0.37	2.5		244.23	
97.69	01/02/17	01/04/17	0.28	2.9		283.31	
97.69	01/05/17	01/09/17	0.51	3.7		361.47	
97.69	01/09/17	01/11/17	0.35	1.6		156.31	
97.69	01/11/17	01/12/17	1.13	0.9		87.92	
97.69	01/15/17	01/18/17	0.32	3.3		322.39	
97.69	01/18/17	01/19/17	0.64	0.9		87.92	
97.69	01/19/17	01/20/17	1.19	0.9		87.92	
97.69	01/20/17	01/22/17	2.20	2.0		195.39	
97.69	01/22/17	01/23/17	0.42	0.9		87.92	
97.69	02/01/17	02/06/17	0.42	4.5		439.62	
97.69	02/07/17	02/10/17	0.29	2.4		234.47	
97.69	02/14/17	02/17/17	1.80	2.5		244.23	
Total Storm Year Trash Discharge						4,132.45	

Rainfall Station: PASADENA 2.0 SE, CA US							
Total Trash Discharged by Storm Event							
Col. 1	Col. 2	Col. 3	Col. 4	Col. 5	Col. 6	Col. 7	Col. 8
DGR	Date of Last Street Sweeping	Date of Storm Event	Precipitation Depth *	Days **	Amount of Trash Recovered from Catchbasins	Storm Event Trash Discharge	Comments
Notations:							
Form	Add additional rows for storm events, if necessary						
Rainfall Station	Name of rainfall station used, indicate only the L.A. County station number						
Total Storm Year Trash Discharge = Sum of individual storm event discharges for reporting period (October 1 - September 30).							
Col. 1	DGR for Jurisdiction from DGR Sampling Data worksheet						
Col. 2	Date of last street sweeping						
Col. 3	Date of storm event with 0.25 inch or more of rainfall						
Col. 4	Depth of rainfall taken from nearest rainfall station (in.)						
Col. 5	Number of days between date of last street sweeping and storm event. For each day of a storm event that generates precipitation greater than 0.25 inch, the Permittee shall calculate a storm event discharge. When more than one storm event occurs prior to the next street sweeping the discharge shall be calculated from the date of the last storm event discharge calculation.						
Col. 6	Amount of trash recovered from catchbasins, if any (lb. or gal.)						
Col. 7	Storm Event Discharge = Col. 1 x Col. 5 - Col. 7 [trash discharged by the storm event], lbs. or gal.						
Col. 8	Provide comments, if necessary						

Col. 1	Col. 2	Col. 3	Col. 4	Col. 5	Col. 6	Col. 7	Col. 8	Col. 9	Col. 10
Reporting Period	Institutional Control Measure			Structural Control		Required Trash Abatement (%)	Total Combined Compliance	Compliance	Comments
	Total Trash Discharged (lbs.)	Effluent Limitation	Equivalent Compliance	Total # CBs served by FCDs and PCDs	% of CBs served by FCDs / PCDs				
31-Oct-11									
31-Oct-12									
31-Oct-13									
31-Oct-14									
31-Oct-15									
31-Oct-16									
31-Oct-17	4,132	688	94.0%	1083	95.3%	99.0%	99.7%	Yes	

Notations:

Form Structural Control Measure: Report compliance using land area served by FCD/PCDs or number of catchbasins served by FCD/PCDs.

Column 1: Reporting Period: Part 7.1.(C)(1) of Order No. 01-182 as amended by Order No. R4-2009-0130

Column 2: As calculated pursuant to Part 7.1.(B)(1)(b)(2) of Order No. 01-182 as amended by Order No. R4-2009-0130
 Alternative approaches per Part 7.1.(B)(1)(b)(3) must be approved in advance by the Executive Officer

Column 3: Effluent Limitation per Part 7.1, Appendix 7-1, Table 1a or 1b, of Order No. 01-182 as amended by Order No. R4-2009-0130

Column 4: Compliance = 1-(Col. 2 / Baseline Waste Load Allocation)

Column 5: Total number of catchbasins, total number of (CBs) served by FCD/PCDs within jurisdiction

Column 6: Percentage of CBs served by FCD/PCDs within jurisdiction

Column 7: Required Trash Abatement: Part 7.1, Appendix 7-1 of Order No. 01-182 as amended by Order No. R4-2009-0130

Column 8: Total Combined Compliance = (Col. 6) + (1.0-Col.6)*(Col.4)

Column 9: FCD Compliance: Yes, if Col. 8 is greater than Col. 7

Column 10: Provide comments, if necessary

Certified													
Device Name	Device Type	FCD Location	Nearest Cross Street	FCD Owner	FCD Maintained By	FCD Installation Date	CB ID No. Served by FCD	CB Type	CB Owner	CB Maintained By	Frequency of FCD Maintenance and other O&M comments	Comments	
1	United S	CPS	NE corner Commonwealth	Westboro	City	City	12/15/14	A1	300-2	City	City	1x/ 3 mos	
2	Storm T	CPS/ARS	SW corner of Commonwealth Av	Atlantic Bl	City	City	12/1/2008 07/2015	A10	300-2	City	City	1x/ 3 mos	
3		N/A	NW corner Larch ST	La France Ave	City	City		A100	300-2	City	City	1x/ 3 mos	Drains to 101
4	United S	CPS	NW corner La France Ave	Larch St	City	City	12/1/14	A101	300-2	City	City	1x/ 3 mos	
5	United S	CPS	NE corner La France Ave	Larch St	City	City	12/1/14	A102	300-2	City	City	1x/ 3 mos	
6	United S	ARS	SS Center Grand	BTWN La France & Primrose	City	City	7/1/15	A103	300-2	City	City	1x/ 3 mos	
7	United S	CPS	NS center Grand Ave	BTWN La France and Primrose	City	City	12/4/14	A104	300-2	City	City	1x/ 3 mos	
8	United S	CPS	SW corner Grand Ave	Primrose Ave	City	City	12/4/14	A105	300-2	City	City	1x/ 3 mos	
9		N/A	NW corner Grand Ave	Primrose Ave	City	City		A106		City	City	1x/ 3 mos	Drains to 107
10	United S	CPS	NW corner Primrose Ave	Grand Ave	City	City	12/4/14	A107	300-2	City	City	1x/ 3 mos	
11	United S	CPS	NE corner Primrose Ave	Grand Ave	City	City	12/4/14	A108	300-2	City	City	1x/ 3 mos	
12	United S	CPS	NW corner Primrose Ave	Birch St	City	City	12/4/14	A109	300-2	City	City	1x/ 3 mos	
13	Storm T	CPS	NE corner of Raymond Av, Southerly	Mission Rd	City	City	1/1/08	A11	300-2	City	City	1x/ 3 mos	
14	United S	CPS	SW corner Birch St	Primrose Ave	City	City	12/4/14	A110	301	City	City	1x/ 3 mos	
15	United S	CPS	NW corner Birch St Mid-Blk	Primrose Ave	City	City	12/4/14	A111	300-2	City	City	1x/ 3 mos	
16	United S	CPS	NE corner Main St	Huntington Dr	City	City	1/12/15	A112	300-2	City	City	1x/ 3 mos	
17		NONE	S/W Hampton Terrace	Main St				A114			City		Pkwy drain unable to install
18	United S	CPS	NW corner Dos Robles Pl	Alhambra Rd	City	City	11/25/14	A115	300-2	City	City	1x/ 3 mos	
19	United S	ARS	Mid Bloc Alhambra	Dos Robles & Marguerita	City	City	7/2/15	A116	300-2	City	City	1x/ 3 mos	
20	United S	CPS	NE corner of Dos Robles Pl	Alhambra Rd	City	City	11/25/14	A117	301	City	City	1x/ 3 mos	
21	United S	CPS	NW corner Marguerita Ave	Alhambra Rd	City	City	11/25/14	A118	300-2	City	City	1x/ 3 mos	
22	United S	ARS	NE corner Raymond	Pepper	City	City	7/3/15	A119	300-2	City	City	1x/ 3 mos	
23	Storm T	CPS	NE corner of Raymond Av, Northerly	Mission Rd	City	City	1/1/08	A12	300-2	City	City	1x/ 3 mos	
24	United S	CPS	Mission SS at City Boundary	Mission West of Westminster	City	City	12/19/14	A120	300-2	City	City	1x/ 3 mos	
25	United S	CPS	Mission SS at Eastbound	Mission West of Westminster	City	City	12/19/14	A121	300-2	City	City	1x/ 3 mos	
26	United S	CPS	SW corner of Mission	Westminster	City	City	12/19/14	A122	300-2	City	City	1x/ 3 mos	
27	United S	ARS	SW corner of Meridian SS Eastbound	BTWN Westminster & Fremont	City	City	7/4/15	A123	300-2	City	City	1x/ 3 mos	
28	United S	CPS	SE corner Mission Rd	Fremont Ave	City	City		A124	300-2	City	City	1x/ 3 mos	
29	United S	CPS	Mission Rd (East of Fremont, before Palm)	Fremont Ave	City	City		A126	300-2	City	City	1x/ 3 mos	
30	United S	CPS	SE corner Mission next to St Light	Palm	City	City	12/19/14	A127	300-2	City	City	1x/ 3 mos	
31		NONE	On Mission 375' East of Raymond	Raymond				A128			City		East on Mission cannot install
32		NONE	on Mission east of Raymond west of Marengo	Mission Rd				A129			City		Cannot install
33	Storm T	CPS	NE corner of Palm Av	Mission Rd	City	City	1/1/08	A13	300-2	City	City	1x/ 3 mos	
34	United S	CPS	NW corner Mission Rd	Marengo	City	City	11/25/14	A130	300-2	City	City	1x/ 3 mos	
35	United S	CPS	SW corner Mission Rd	Marengo	City	City	12/19/14	A131	300-2	City	City	1x/ 3 mos	
36	United S	CPS	NW corner Marengo	Mission Rd	City	City	11/25/14	A132	300-2	City	City	1x/ 3 mos	
37	United S	CPS	NE corner Marengo	Mission Rd	City	City	11/25/14	A133	300-2	City	City	1x/ 3 mos	
38		NONE	Corner T of Marengo and Chestnut	Marengo Ave				A134					Cannot install
39	United S	CPS	Mid block SS Orange	BTW Marengo & Electric	City	City	11/24/14	A135	300-2	City	City	1x/ 3 mos	
40	United S	CPS	Mid block NS Orange	BTW Marengo & Electric	City	City	11/24/14	A136	300-2	City	City	1x/ 3 mos	
41		N/A	NW corner Orange	Electric Ave	City	City		A137		City	City	1x/ 3 mos	Drains to A139
42	United S	CPS	SW corner Orange	Electric Ave	City	City	11/24/14	A138	300-2	City	City	1x/ 3 mos	
43	United S	CPS	NW corner Electric Ave	Orange	City	City	11/24/14	A139	300-2	City	City	1x/ 3 mos	
44	Storm T	CPS	NW corner of Raymond Av, Northerly	Mission Rd	City	City	12/1/08	A14	300-2	City	City	1x/ 3 mos	
45	United S	CPS	Mid Block WS Electric Ave.	BTWN Commonwealth & Orange	City	City	11/24/14	A140	300-2	City	City	1x/ 3 mos	
46	United S	ARS	Mid Block ES on Electric	BTWN Comm & Orange	City	City	7/5/15	A141	300-2	City	City	1x/ 3 mos	
47		N/A	NW corner of Chestnut	Electric Ave	City	City		A142		City	City	1x/ 3 mos	Drains to A143
48	United S	CPS	NW corner Electric Ave	Chestnut	City	City	11/24/14	A143	300-2	City	City	1x/ 3 mos	
49	United S	CPS	SW Chestnut	Electric Ave	City	City	11/24/14	A144	300-2	City	City	1x/ 3 mos	

50	United S	CPS	NE comer Electric Ave	Mission Rd	City	City	11/24/14	A146	300-2	City	City	1x/ 3 mos	
51	United S	CPS	NW corner Electric Ave	Mission Rd	City	City	11/24/14	A147	300-2	City	City	1x/ 3 mos	
52	United S	CPS	SE comer of Mission	Across From Electric	City	City	12/19/14	A148	301	City	City	1x/ 3 mos	
53	United S	CPS	NW corner Mission Rd	Marguerita	City	City	11/21/14	A149	300-2	City	City	1x/ 3 mos	
54	Storm T	CPS	NW corner of Palm Av	Mission Rd	City	City	1/1/08	A15	300-2	City	City	1x/ 3 mos	
55	United S	CPS	NW corner of Marguerita	Mission Rd	City	City	11/21/14	A150	300-2	City	City	1x/ 3 mos	
56	United S	CPS	NE comer Marguerita	Mission Rd	City	City	11/21/14	A151	300-2	City	City	1x/ 3 mos	
57	United S	CPS	NE comer Mission Rd	Marguerita	City	City	11/21/14	A152	300-2	City	City	1x/ 3 mos	
58	United S	CPS	SE comer Mission Rd	Marguerita	City	City	12/19/14	A153	300-2	City	City	1x/ 3 mos	
59	United S	CPS	NW corner Curtis	Mission Rd	City	City	11/21/14	A154	300-2	City	City	1x/ 3 mos	
60	United S	CPS	NE comer Curtis	Mission Rd	City	City	11/21/14	A155	300-2	City	City	1x/ 3 mos	
61	United S	CPS	NW corner Mission Rd	Raymond Ave				A156			City	1x/ 3 mos	
62	United S	CPS	NE comer Fremont	Orange	City	City	12/5/14	A158	300-2	City	City	1x/ 3 mos	
63	United S	CPS	NE comer Orange	Fremont Ave	City	City	12/8/14	A159	300-2	City	City	1x/ 3 mos	
64	Storm T	CPS	NE comer of Date Av, Southerly	Mission Rd	City	City	1/1/08	A16	300-2	City	City	1x/ 3 mos	
65	United S	CPS	SW corner Winchester	Concord	City	City	1/14/15	A160	300-2	City	City	1x/ 3 mos	
66	United S	CPS	NW corner Winchester	Concord	City	City	2/11/15	A161	301	City	City	1x/ 3 mos	
67	United S	CPS	NE comer Concord, Westerly	Westchester	City	City	1/14/15	A162	301	City	City	1x/ 3 mos	
68	United S	N/A	NE comer Concord, Easterly	Westchester	City	City		A163		City	City	1x/ 3 mos	Drains to A162
69	United S	CPS	NE comer 1108 Winchester, Southerly	Concord	City	City	1/14/15	A164	301	City	City	1x/ 3 mos	
70		N/A	NE comer Winchester, Northerly	Concord	City	City		A165		City	City	1x/ 3 mos	Drains to A164
71	United S	CPS	SE comer 3020 Concord	Westboro	City	City	12/9/14	A166	301	City	City	1x/ 3 mos	
72	United S	CPS	NW corner Westboro	Concord	City	City	12/9/14	A167	301	City	City	1x/ 3 mos	
73	United S	CPS	NW corner Westboro	Norwich Avenue	City	City	12/9/14	A168	300-2	City	City	1x/ 3 mos	
74		N/A	NW corner Norwich Avenue	Westboro	City	City		A169		City	City	1x/ 3 mos	Drains to A168
75	Storm T	CPS	NE comer of Date Av, Northerly	Mission Rd	City	City	1/1/08	A17	300-2	City	City	1x/ 3 mos	
76		N/A	NE comer Norwich Avenue	Concord	City	City		A170		City	City	1x/ 3 mos	Drains to A171
77	United S	CPS	NE comer Concord	Norwich Avenue	City	City	12/9/14	A171	300-2	City	City	1x/ 3 mos	
78	United S	CPS	NE comer Westboro Avenue	Norwich Avenue	City	City	12/9/14	A172	300-2	City	City	1x/ 3 mos	
79	United S	CPS	NW comer Westboro Avenue	Norwich Avenue	City	City	12/9/14	A173	301	City	City	1x/ 3 mos	
80	United S	CPS	NE comer Westboro Avenue (Mid)	Norwich Avenue	City	City	12/9/14	A174	301	City	City	1x/ 3 mos	
81	United S	CPS	NW comer Westboro Avenue	Norwich Avenue	City	City	12/9/14	A175	300-2	City	City	1x/ 3 mos	
82	United S	CPS	Mid Block ES Westboro	Norwich Avenue	City	City	12/9/14	A176	301	City	City	1x/ 3 mos	
83	United S	CPS	Orange (LA County Building)	BTWN Date & Fremont	City	City	12/5/14	A177	300-2	City	City	1x/ 3 mos	
84		N/A	Orange County Building (Connects)	BTWN Date & Fremont	City	City		A178		City	City	1x/ 3 mos	Drains to A177
85	United S	CPS	Meridian Ave	Concord	City	City	12/5/14	A179	300-2	City	City	1x/ 3 mos	
86	Storm T	CPS	NW corner of Date Av, Southerly	Mission Rd	City	City	1/1/08	A18	300-2	City	City	1x/ 3 mos	
87	United S	CPS	Winchester	Concord	City	City	2/11/15	A180	300-2	City	City	1x/ 3 mos	
88	United S	ARS	NE Mission Heading East	Fremont Ave	City	City	7/6/15	A181	300-2	City	City	1x/ 3 mos	
89	United S	CPS	NS Midblock Orange St	(Towards Date)	City	City	12/5/15	A183	300-2	City	City	1x/ 3 mos	
90		N/A	SS Midblock Orange St	(Towards Date)	City	City		A184		City	City	1x/ 3 mos	Drains to A183
91	United S	CPS	SW corner Main	Atlantic	City	City	Unknown	A185	300-2	City	City	1x/ 3 mos	
92	United S	CPS	NW corner Mission Rd (West of A130)	Raymond	City	City	11/25/14	A186	300-2	City	City	1x/ 3 mos	
93	United S	CPS	NE comer Poplar Blvd	Fremont Ave	City	City	12/1/08	A187	300-2	City	City	1x/ 3 mos	
94	United S	CPS	NW corner Poplar Blvd	Fremont Ave				A188			City	1x/ 3 mos	
95	United S	CPS	SW corner Poplar Blvd	Fremont Ave				A189			City	1x/ 3 mos	
96	United S	CPS	NE comer Mission Rd	Date Ave				A190			City	1x/ 3 mos	
97	United S	CPS	NE comer Mission Rd	Palm Ave				A191			City	1x/ 3 mos	
98		NONE	WS Midvale & Concord	Midvale				A192			City		No CPS, Sump location
99	Storm T	CPS	SE comer Concord & Midvale	Concord				A193			City	1x/ 3 mos	
100		CPS	ES 1146 S Meridian & Mission	Meridian Av				A194			City	1x/ 3 mos	
101		CPS	ES 1000 s Fremont & Orange	Fremont				A195			City	1x/ 3 mos	
102		CPS	NW Corner Raymond & Mission	Mission Rd				A196			City	1x/ 3 mos	

103	United S	CPS	NE Corner Alhambra & Electric	Electric								City	1x/ 3 mos	
104	United S	CPS	NS 1515 W Alhambra & Electric	Alhambra Rd								City	1x/ 3 mos	
105	Storm T	CPS	NW corner of Date Av, Northerly	Mission Rd	City	City	1/1/08	A19	300-2	City	City	City	1x/ 3 mos	
106	United S	CPS	NE corner Westboro	Commonwealth	City	City	12/15/14	A2	300-2	City	City	City	1x/ 3 mos	
107	Storm T	CPS/ARS	NE corner of Mission Rd	Fremont Av	City	City	12/1/2008 07/2015	A20	300-2	City	City	City	1x/ 3 mos	
108	Storm T	CPS	ES of Fremont Av	Mission Rd	City	City	12/1/08	A21	300-2	City	City	City	1x/ 3 mos	
109	Storm T	CPS/ARS	NE corner of Fremont Ave, Southerly	Mission Rd	City	City	12/1/2008 07/2015	A22	300-2	City	City	City	1x/ 3 mos	
110	Storm T	CPS/ARS	NE corner of Fremont Ave, Northerly	Mission Rd	City	City	12/1/2008 07/2015	A23	300-2	City	City	City	1x/ 3 mos	
111	Storm T	CPS	WS of Fremont Av	1000 Fremont Av	City	City	12/1/08	A24	300-2	City	City	City	1x/ 3 mos	
112	Storm T	CPS/ARS	NW corner of Fremont Av, Northerly	Mission Rd	City	City	12/1/2008 07/2015	A25	300-2	City	City	City	1x/ 3 mos	
113	Storm T	CPS/ARS	NW corner of Fremont Av, Southerly	Mission Rd	City	City	12/1/2008 07/2015	A26	300-2	City	City	City	1x/ 3 mos	
114	Storm T	CPS/ARS	NE corner of Meridian Av	Mission Rd	City	City	1/1/2008 07/2015	A27	300-2	City	City	City	1x/ 3 mos	
115	Storm T	CPS/ARS	NE corner of Mission Rd	Meridian Av	City	City	11/1/2008 07/2015	A28	300-2	City	City	City	1x/ 3 mos	
116	Storm T	CPS	ES of Meridian Av	N of Mission Rd	City	City	12/1/08	A29	300-2	City	City	City	1x/ 3 mos	
117	United S	CPS	NW corner Westboro	Commonwealth	City	City	12/15/14	A3	300-2	City	City	City	1x/ 3 mos	
118	Storm T	CPS	WS of Meridian @949	S of Concord Av	City	City	12/1/08	A30	300-2	City	City	City	1x/ 3 mos	
119	Storm T	CPS	WS of Meridian @1147	N of Mission Rd	City	City	12/1/08	A31	300-2	City	City	City	1x/ 3 mos	
120	Storm T	CPS/ARS	NW corner of Meridian Ave	Mission Rd	City	City	1/1/2008 07/2015	A32	300-2	City	City	City	1x/ 3 mos	
121	Storm T	CPS/ARS	NE corner of Mission Rd	Westminster Av	City	City	12/1/2008 07/2015	A33	300-2	City	City	City	1x/ 3 mos	
122	Storm T	CPS/ARS	NE corner of Westminster Av	Mission Rd	City	City	1/1/2008 07/2015	A34	300-2	City	City	City	1x/ 3 mos	
123	Storm T	CPS	WS of Westminster Av @ 1135	N of Mission Rd	City	City	11/1/08	A35	300-2	City	City	City	1x/ 3 mos	
124	Storm T	CPS	ES of Westminster Av @ 1140	N of Mission Rd	City	City	12/1/08	A36	300-2	City	City	City	1x/ 3 mos	
125	Storm T	CPS/ARS	NW corner of Westminster Av	Mission Rd	City	City	1/1/2008 07/2015	A37	300-2	City	City	City	1x/ 3 mos	
126	Storm T	CPS	WS of Mission Rd @ 3115	W of Westminster Av	City	City	12/1/08	A38	300-2	City	City	City	1x/ 3 mos	
127	Storm T	CPS	WS of Mission Rd @ 3201	W of Westminster Av	City	City	12/1/08	A39	300-2	City	City	City	1x/ 3 mos	
128	United S	CPS	NW corner Commonwealth	Westboro	City	City	12/15/14	A4	300-2	City	City	City	1x/ 3 mos	
129	Storm T	CPS	ES of Fremont Av	Orange Av	City	City	12/1/08	A40	300-2	City	City	City	1x/ 3 mos	
130	United S	CPS	NW Atlantic	Mission Rd	City	City	11/21/14	A41	300-2	City	City	City	1x/ 3 mos	
131	United S	CPS	NW Atlantic	Beacon	City	City	11/21/14	A42	300-2	City	City	City	1x/ 3 mos	
132			N/A	NW Main	City	City		A43			City	City	1x/ 3 mos	Drains to A44
133	United S	CPS	NW Atlantic	Main	City	City	1/13/15	A44	300-2	City	City	City	1x/ 3 mos	
134	United S	CPS	NW Atlantic	Woodward	City	City		A45			City	City	1x/ 3 mos	
135	United S	CPS	NW corner Pine	Atlantic	City	City	1/12/15	A46	300-2	City	City	City	1x/ 3 mos	
136	United S	CPS	Nw corner Atlantic	Pine	City	City	1/15/15	A47	300-2	City	City	City	1x/ 3 mos	
137	United S	CPS	SE corner Westmont	Lanewood	City	City	1/15/15	A48	300-2	City	City	City	1x/ 3 mos	
138	United S	CPS	WS corner Westmont	Lanewood	City	City	1/15/15	A49	300-2	City	City	City	1x/ 3 mos	
139	United S	CPS	SW corner Commonwealth	Westboro	City	City	12/15/14	A5	300-2	City	City	City	1x/ 3 mos	
140	United S	CPS	NE corner Poplar	Westmont	City	City	12/8/14	A50	300-2	City	City	City	1x/ 3 mos	
141	United S	CPS	NW corner Westmont	Poplar	City	City		A51			City	City	1x/ 3 mos	
142	United S	ARS	NW corner Poplar	Westmont	City	City	7/7/15	A52	300-2	City	City	City	1x/ 3 mos	
143	United S	CPS	NW corner Poplar	Westboro	City	City	12/8/14	A53	300-2	City	City	City	1x/ 3 mos	
144	United S	CPS	NE corner Poplar	Westminster	City	City	12/8/14	A54	300-2	City	City	City	1x/ 3 mos	
145	United S	CPS	NW corner Poplar	Orange Grove	City	City	12/8/14	A55	300-2	City	City	City	1x/ 3 mos	
146	United S	CPS	NE corner Poplar	Orange Grove	City	City	12/8/14	A56	300-2	City	City	City	1x/ 3 mos	
147	United S	CPS	NE corner Hampden	Glenridge	City	City	12/8/14	A57	300-2	City	City	City	1x/ 3 mos	
148	United S	CPS	SE corner Hampden	Glenridge	City	City	12/5/14	A58	300-2	City	City	City	1x/ 3 mos	
149	United S	CPS	SW corner Hampden	Glenridge	City	City	12/5/14	A59	300-2	City	City	City	1x/ 3 mos	
150	United S	CPS	SE corner Commonwealth	Westboro	City	City	12/15/14	A6	300-2	City	City	City	1x/ 3 mos	
151	United S	CPS	NW corner Hampden	Glenridge	City	City	12/8/14	A60	300-2	City	City	City	1x/ 3 mos	
152	United S	ARS	Westminster	South Poplar East Side	City	City	7/8/15	A61	300-2	City	City	City	1x/ 3 mos	
153	United S	ARS	Westminster	South Poplar West Side	City	City	7/9/15	A62	300-2	City	City	City	1x/ 3 mos	
154	United S	CPS	NE corner Commonwealth	Fremont Ave	City	City	12/4/14	A63	300-2	City	City	City	1x/ 3 mos	
155	United S	CPS	SE corner Palm	Larch St	City	City	12/1/14	A64	300-2	City	City	City	1x/ 3 mos	

156	United S	ARS	SW corner Commonwealth	Marengo	City	City	7/10/15	A65	300-2	City	City	1x/ 3 mos	
157	United S	CPS	NW corner Commonwealth (North)	Marengo	City	City	11/20/14	A66	300-2	City	City	1x/ 3 mos	
158	United S	CPS	NW corner Marengo	Commonwealth Ave	City	City	11/20/14	A67	300-2	City	City	1x/ 3 mos	
159	United S	CPS	NW corner Commonwealth	Marengo	City	City	11/20/14	A68	300-2	City	City	1x/ 3 mos	
160	United S	CPS	NE corner Marengo	Commonwealth Ave	City	City	11/20/14	A69	300-2	City	City	1x/ 3 mos	
161	Storm T	CPS	WS of Atlantic Bl	Irving Pl	City	City	11/1/08	A7	300-2	City	City	1x/ 3 mos	
162	United S	CPS	SE corner 1608 Commonwealth	Marengo	City	City	11/20/14	A70	300-2	City	City	1x/ 3 mos	
163	United S	CPS	NE corner 1633 Commonwealth	Marengo	City	City	11/20/14	A71	300-2	City	City	1x/ 3 mos	
164	United S	CPS	SE corner Commonwealth (North)	Marengo	City	City	11/20/14	A72	300-2	City	City	1x/ 3 mos	
165	United S	CPS	NW corner Electric Ave	Commonwealth Ave	City	City	11/20/14	A73	300-2	City	City	1x/ 3 mos	
166	United S	CPS	NW corner Commonwealth	Electric Ave.	City	City	11/20/14	A74	300-2	City	City	1x/ 3 mos	
167	United S	CPS	SW corner Commonwealth	Electric Ave.	City	City	11/20/14	A75	300-2	City	City	1x/ 3 mos	
168	United S	CPS	NE corner Electric Ave	Commonwealth Ave	City	City	11/20/14	A76	300-2	City	City	1x/ 3 mos	
169	United S	CPS	NW corner Commonwealth	Marguerita	City	City	1/15/15	A77	300-2	City	City	1x/ 3 mos	
170	United S	CPS	NW corner Marguerita Ave	Commonwealth	City	City	1/15/15	A78	300-2	City	City	1x/ 3 mos	
171	United S	CPS	SW corner Commonwealth	Marguerita	City	City	2/12/15	A79	300-2	City	City	1x/ 3 mos	
172	Storm T	CPS/ARS	NW corner Atlantic Bl	Commonwealth Av	City	City	12/1/2008 07/2015	A8	300-2	City	City	1x/ 3 mos	
173	United S	CPS	SE corner Commonwealth	Marguerita	City	City	1/15/15	A80	300-2	City	City	1x/ 3 mos	
174	United S	ARS	NE corner Commonwealth	Marguerita	City	City	7/11/15	A81	300-2	City	City	1x/ 3 mos	
175	United S	CPS	NE corner Marguerita	Commonwealth	City	City	1/15/15	A82	300-2	City	City	1x/ 3 mos	
176	United S	CPS	NW corner Curtis	Commonwealth	City	City	1/15/15	A83	300-2	City	City	1x/ 3 mos	
177	United S	CPS	NW corner Olive	Commonwealth	City	City	1/16/15	A84	300-2	City	City	1x/ 3 mos	
178	United S	CPS	NW corner Commonwealth	Olive	City	City	1/16/15	A85	300-2	City	City	1x/ 3 mos	
179	United S	CPS	NE corner Olivve	Commonwealth	City	City	1/16/15	A86	300-2	City	City	1x/ 3 mos	
180	United S	CPS	NE corner Main St	Cedar	City	City	12/1/14	A88	300-2	City	City	1x/ 3 mos	
181	United S	CPS	NE corner Primrose Ave	Main	City	City	12/1/14	A89	300-2	City	City	1x/ 3 mos	
182	Storm T	CPS/ARS	NW corner of Commonwealth Av	Atlantic Bl	City	City	12/1/2008 07/2015	A9	300-2	City	City	1x/ 3 mos	
183	United S	CPS	Cedar ST Storm Drain (Mid Block)	BTWN Main & Palm	City	City	12/1/14	A90	300-2	City	City	1x/ 3 mos	
184	United S	CPS	NE corner Palm	Larch St	City	City	12/1/14	A91	300-2	City	City	1x/ 3 mos	
185	United S	CPS	SE corner Palm	Larch St	City	City	12/1/14	A92	300-2	City	City	1x/ 3 mos	
186	United S	ARS	NW corner Larch	Palm	City	City	7/13/15	A93	300-2	City	City	1x/ 3 mos	
187	United S	CPS	SW corner Palm	Larch St	City	City	12/1/14	A94	300-2	City	City	1x/ 3 mos	
188	United S	CPS	SW corner Larch	Palm	City	City	12/1/14	A95	300-2	City	City	1x/ 3 mos	
189		N/A	NE corner Grand	Raymond	City	City		A97		City	City	1x/ 3 mos	Drains to A98
190	United S	CPS	SE corner Grand	Raymond	City	City	11/25/14	A98	300-2	City	City	1x/ 3 mos	
191	United S	CPS	NE corner Primrose Ave	Larch St	City	City	12/4/14	A99	300-2	City	City	1x/ 3 mos	
192	United S	CPS	NW corner Cordova	Main	City	City	1/16/15	B1	300-2	City	City	1x/ 3 mos	
193	United S	CPS	NE corner El Molino	Main	City	City	1/16/15	B10	300-3	City	City	1x/ 3 mos	
194	United S	CPS	ES Fifth	Mission	City	City	1/8/15	B100	300-2	City	City	1x/ 3 mos	
195	United S	CPS	WS Fifth Bottom	Mission	City	City	1/8/15	B101	300-2	City	City	1x/ 3 mos	
196	United S	CPS	WS Fifth Top	Mission	City	City	1/8/15	B102	300-2	City	City	1x/ 3 mos	
197	United S	CPS	WS Sixth	Mission	City	City	1/12/15	B103	300-2	City	City	1x/ 3 mos	
198	United S	CPS	ES Seventh	Mission	City	City	1/12/15	B104	300-2	City	City	1x/ 3 mos	
199	United S	CPS	NE Atlantic West Side	Beacon	City	City	1/13/15	B105	300-2	City	City	1x/ 3 mos	
200	United S	CPS	NE Atlantic	Woodward	City	City	11/14/14	B106	301	City	City	1x/ 3 mos	
201	United S	CPS	NW Fourth	Woodward	City	City	11/14/14	B107	300-2	City	City	1x/ 3 mos	
202	United S	CPS	NE Fourth	Woodward	City	City	11/14/14	B108	300-2	City	City	1x/ 3 mos	
203		NONE	NE Third	Woodward	City	City		B109		City	City	1x/ 3 mos	Basin too narrow
204	United S	CPS	NW corner Vega	Main	City	City	11/18/14	B11	300-3	City	City	1x/ 3 mos	
205		NONE	NW Third	Woodward	City	City		B110		City	City	1x/ 3 mos	Basin too shallow
206		NONE	NW Woodward	Second St	City	City		B111		City	City	1x/ 3 mos	Too shallow to fit CPS
207	United S	CPS	NE corner Woodward (Receives B111)	Second St	City	City	11/13/14	B112	300-2	City	City	1x/ 3 mos	
208	United S	CPS	NW corner First	Woodward	City	City	11/13/14	B113	300-2	City	City	1x/ 3 mos	

209	United S	ARS	NE comer 1st	Woodward	City	City	7/14/15	B114	300-2	City	City	1x/ 3 mos	
210	United S	CPS	NW corner Garfield	Woodward	City	City	11/13/14	B115	300-2	City	City	1x/ 3 mos	
211	United S	CPS	NE comer Garfield	Woodward	City	City	11/13/14	B116	300-2	City	City	1x/ 3 mos	
212	United S	CPS	NW corner Stoneman	Woodward	City	City	11/13/14	B117	300-2	City	City	1x/ 3 mos	
213	United S	CPS	NW corner Monterey	Woodward	City	City	11/14/14	B118	300-2	City	City	1x/ 3 mos	
214	United S	CPS	NW corner Chapel Ave	Woodward	City	City	11/14/14	B119	300-2	City	City	1x/ 3 mos	
215	United S	CPS	NW corner Main St	Champion	City	City	1/14/15	B12	300-2	City	City	1x/ 3 mos	
216	United S	CPS	NW corner Woodward	Chapel Ave	City	City	11/14/14	B120	300-2	City	City	1x/ 3 mos	
217	United S	CPS	NE comer Chapel	Woodward	City	City	11/14/14	B121	300-2	City	City	1x/ 3 mos	
218	United S	CPS	SE Chapel	Alhambra Rd	City	City	1/15/15	B122	300-2	City	City	1x/ 3 mos	
219	United S	CPS	NE Alhambra Rd	Chapel Ave	City	City	1/15/15	B123	300-2	City	City	1x/ 3 mos	
220	United S	CPS	NE comer Atlantic	Pine St	City	City	11/13/14	B124	300-2	City	City	1x/ 3 mos	
221	United S	CPS	NW corner Garfield	Pine St	City	City	11/13/14	B125	300-2	City	City	1x/ 3 mos	
222	United S	CPS	SW corner Garfield	Pine St	City	City	11/13/14	B126	300-2	City	City	1x/ 3 mos	
223	United S	CPS	NW corner Stoneman	Pine St	City	City	11/12/14	B127	300-2	City	City	1x/ 3 mos	
224	United S	CPS	NE comer Garfield	Pine St	City	City	11/13/14	B128	300-2	City	City	1x/ 3 mos	
225	United S	CPS	NW corner Pine	Stoneman Ave	City	City	11/12/14	B129	300-2	City	City	1x/ 3 mos	
226	United S	CPS	SE comer Main & Hampton/ Main SW Cross Drain Connects		City	City	11/17/14	B13	300-2	City	City	1x/ 3 mos	
227	United S	CPS	SW corner Pine	Stoneman Ave	City	City	11/12/14	B130	300-2	City	City	1x/ 3 mos	
228	United S	CPS	NE comer Stoneman	Pine St	City	City	11/12/14	B131	300-2	City	City	1x/ 3 mos	
229	United S	CPS	SW corner Pine	Monterey	City	City	11/12/14	B132	300-2	City	City	1x/ 3 mos	
230	United S	CPS	SW corner Monterey	Pine St	City	City	11/12/14	B133	300-2	City	City	1x/ 3 mos	
231	United S	CPS	NW corner Pine	Monterey	City	City	11/12/14	B134	300-2	City	City	1x/ 3 mos	
232	United S	CPS	NW corner Monterey	Pine St	City	City	11/12/14	B135	300-2	City	City	1x/ 3 mos	
233	United S	CPS	NE comer Monterey	Pine St	City	City	11/12/14	B136	300-2	City	City	1x/ 3 mos	
234	United S	CPS	SE comer Monterey	Pine St	City	City	11/12/14	B137	300-2	City	City	1x/ 3 mos	
235	United S	ARS	NW comer Mission	Almansor	City	City	7/15/15	B138	300-2	City	City	1x/ 3 mos	
236	United S	CPS	NW corner 5th	Main	City	City	1/16/15	B139	300-2	City	City	1x/ 3 mos	
237	Storm T	CPS	NW corner of Main	Cardova St.	City	City	11/1/08	B14	300-2	City	City	1x/ 3 mos	
238	United S	CPS/ARS	NW corner 4th Cross/Gutter	Main	City	City	1/16/15	B140	300-2	City	City	1x/ 3 mos	
239	United S	CPS	NW corner 2nd	Main	City	City	11/18/14	B141	300-2	City	City	1x/ 3 mos	
240	United S	CPS	NE comer 2nd	Main	City	City	11/18/14	B142	300-2	City	City	1x/ 3 mos	
241	United S	CPS	SW Alley 2nd	Main	City	City	11/18/14	B143	300-2	City	City	1x/ 3 mos	
242	United S	CPS	SE Alley 2nd	Main	City	City	11/18/14	B144	301	City	City	1x/ 3 mos	
243	United S	CPS	NE comer Valencia	Main	City	City	11/17/14	B145	300-2	City	City	1x/ 3 mos	
244	United S	CPS	NE comer Vega	Main	City	City	11/18/14	B146	300-2	City	City	1x/ 3 mos	
245	United S	CPS	NW comer Almansor	Main	City	City	11/18/14	B147	300-2	City	City	1x/ 3 mos	
246	United S	ARS	NE comer Almansor (conn. to B148)	Main	City	City	7/16/15	B148	300-2	City	City	1x/ 3 mos	
247	Storm T	CPS	NW corner of Main	Hidalgo Av	City	City	12/1/08	B15	300-2	City	City	1x/ 3 mos	
248	United S	ARS	NW corner Main	Valencia				B150					
249	United S	CPS	NW corner Pine	Garfield Ave	City	City	11/13/14	B151	300-2	City	City	1x/ 3 mos	
250	United S	CPS	Alahmar Terrace cul de sac	Hoeffler	City	City	1/16/15	B152	300-2	City	City	1x/ 3 mos	
251	United S	ARS	NW corner 1st St.	Main St	City	City	7/17/15	B153	300-2	City	City	1x/ 3 mos	
252	United S	CPS	Ne comer 1st	Main	City	City	11/18/14	B154	300-2	City	City	1x/ 3 mos	
253	United S	CPS	SW corner El Molino	Main	City	City	11/17/14	B155	300-2	City	City	1x/ 3 mos	
254	United S	CPS	NW corner Mission Rd	Granada	City	City	1/5/15	B156	301	City	City	1x/ 3 mos	
255	United S	CPS	16 north 2nd St (East Side)	Main	City	City	11/18/14	B158	300-2	City	City	1x/ 3 mos	
256	United S	CPS	16 North 2nd ST (West Side)	Main	City	City	11/18/14	B159	300-2	City	City	1x/ 3 mos	
257	Storm T	CPS	NE comer of Chapel Av	Main St	City	City	12/1/08	B16	300-2	City	City	1x/ 3 mos	
258	United S	CPS	NW corner Main St	Granada Ave	City	City	11/17/14	B160	300-2	City	City	1x/ 3 mos	
259		NONE	NE comer Monterey Ave	Woodward Ave				B161					Pkwy drain unable to install
260	United S	CPS	Woodward North Side of Bridge	Chapel	City	City	1/14/15	B163	300-2	City	City	1x/ 3 mos	
261	United S	CPS	Woodward South Side of Bridge	Chapel	City	City	1/14/15	B164	300-2	City	City	1x/ 3 mos	

262	United S	CPS	Hoeffler Dr cul de sac	Alahmar	City	City	1/16/15	B165	300-2	City	City	1x/ 3 mos	
263	United S	CPS	NW corner Monterey	Bay State St (North)	City	City	2/12/15	B166	300-2	City	City	1x/ 3 mos	
264	United S	CPS	NW corner Monterey	Bay State St (South)	City	City	1/12/15	B167	300-2	City	City	1x/ 3 mos	
265	United S	CPS	NW corner Main St	Vega	City	City	11/18/14	B168	300-2	City	City	1x/ 3 mos	
266	United S	CPS	SW corner Main St	Vega	City	City	11/17/14	B169	300-2	City	City	1x/ 3 mos	
267	Storm T4	CPS	NE corner of Stoneman Av	Main St	City	City	11/1/08	B17	300-2	City	City	1x/ 3 mos	installed Stormtek CPS
268	United S	ARS	NW corner Main St	Almansor	City	City	7/18/15	B171	300-2	City	City	1x/ 3 mos	
269	United S	ARS	SW corner Main St	S 5th St	City	City	7/19/15	B172	300-2	City	City	1x/ 3 mos	
270	United S	CPS	End of Claycourt next to Wash	Granada	City	City	1/5/15	B173	301	City	City	1x/ 3 mos	
271	Storm T4	CPS	NW corner of Main St	Chapel Av	City	City	12/1/08	B18	300-2	City	City	1x/ 3 mos	
272	United S	CPS	NE corner Mission Rd & 7th	Mission Rd				B182			City	1x/ 3 mos	
273		ARS	NW West of Almansor & Mission	Mission Rd				B183			City	1x/ 3 mos	Too shallow, but has ARS
274	United S	CPS	SS East of Almansor & Mission	Mission				B184			City	1x/ 3 mos	
275	United S	CPS	NE corner 4th & Mission	4th				B185			City	1x/ 3 mos	
276	United S	CPS	NW corner 4th & Mission	4th				B186			City	1x/ 3 mos	
277	United S	CPS	NW corner Hidalgo & Main	Hidalgo Av				B187			City	1x/ 3 mos	
278	United S	CPS	SE corner Hampton Ct & Main	Main				B188			City	1x/ 3 mos	
279	Storm T4	CPS	NW corner of Main St	Stoneman Av	City	City	12/1/08	B19	300-2	City	City	1x/ 3 mos	
280	United S	CPS	NW corner Granada	Main St	City	City	1/16/15	B2	300-2	City	City	1x/ 3 mos	
281	Storm T4	CPS	NW corner of Stoneman Av	Main St	City	City	12/1/08	B20	300-2	City	City	1x/ 3 mos	Installed Stormtek CPS
282	Storm T4	CPS/ARS	NE corner of Garfield Av	Main St	City	City	1/1/2008 07/2015	B21	300-2	City	City	1x/ 3 mos	
283	Storm T4	CPS/ARS	NW corner of Garfield Av	Main St	City	City	1/1/2008 07/2015	B22	300-2	City	City	1x/ 3 mos	
284	Storm T4	CPS/ARS	NE corner of Second St	Main St	City	City	1/1/2008 07/2015	B23	300-2	City	City	1x/ 3 mos	
285	Storm T4	CPS/ARS	NW corner of Second St	Main St	City	City	1/1/2008 07/2015	B24	300-2	City	City	1x/ 3 mos	
286	Storm T4	CPS/ARS	NW corner of Third St	Main St	City	City	12/1/2008 07/2015	B25	300-2	City	City	1x/ 3 mos	
287	Storm T4	CPS/ARS	NW corner of Main St	Third St	City	City	11/1/2008 07/2015	B26	300-2	City	City	1x/ 3 mos	
288	Storm T4	CPS/ARS	NE corner of Fourth St	Main St	City	City	1/1/2008 07/2015	B27	300-2	City	City	1x/ 3 mos	
289	Storm T4	CPS	NE corner of Fifth St	Main St	City	City	1/1/08	B28	300-2	City	City	1x/ 3 mos	
290	Storm T4	CPS/ARS	NW corner of Main St	Fourth St	City	City	1/1/2008 07/2015	B29	300-2	City	City	1x/ 3 mos	
291	United S	CPS	SW corner Main	Granada	City	City	1/6/15	B3	300-2	City	City	1x/ 3 mos	
292	Storm T4	CPS	NW corner of Fifth St	Main St	City	City	12/1/08	B30	300-2	City	City	1x/ 3 mos	installed Stormtek CPS
293	Storm T4	CPS	SW corner of Main St	Fourth St	City	City	1/1/08	B31	300-2	City	City	1x/ 3 mos	
294	Storm T4	CPS/ARS	SE corner of Main St	Second St	City	City	1/1/2008 07/2015	B32	300-2	City	City	1x/ 3 mos	
295	Storm T4	CPS/ARS	SW corner of Main St	Second St	City	City	1/1/2008 07/2015	B33	300-2	City	City	1x/ 3 mos	
296	Storm T4	CPS	SS of Main St	Stoneman Av	City	City	11/1/08	B34	300-2	City	City	1x/ 3 mos	
297	Storm T4	CPS	SW corner of Main St	Monterey St	City	City	12/1/08	B35	300-2	City	City	1x/ 3 mos	
298	Storm T4	CPS	SW corner of Main St	Chapel Av	City	City	12/1/08	B36	300-2	City	City	1x/ 3 mos	
299	Storm T4	CPS	SW corner of Main St	Hampton Ct	City	City	11/1/08	B37	300-2	City	City	1x/ 3 mos	
300	Storm T4	CPS	NW corner of Second St	Commonwealth Av	City	City	12/1/08	B38	300-2	City	City	1x/ 3 mos	
301	Storm T4	CPS	NE corner of Commonwealth Av	Third St	City	City	1/1/08	B39	300-2	City	City	1x/ 3 mos	
302	United S	CPS	SW corner Granada	Main	City	City	11/17/14	B4	300-2	City	City	1x/ 3 mos	
303	Storm T4	CPS	NE corner of Third St	Commonwealth Av	City	City	1/1/08	B40	300-2	City	City	1x/ 3 mos	
304	Storm T4	CPS	NW corner of Third St	Commonwealth Av	City	City	1/1/08	B41	300-2	City	City	1x/ 3 mos	
305	Storm T4	CPS	NE corner of Commonwealth Av	Fourth St	City	City	1/1/08	B42	300-2	City	City	1x/ 3 mos	
306	Storm T4	CPS	NE corner of Fourth St	Commonwealth Av	City	City	1/1/08	B43	300-2	City	City	1x/ 3 mos	
307	Storm T4	CPS	NW corner of Fourth St	Commonwealth Av	City	City	1/1/08	B44	300-2	City	City	1x/ 3 mos	
308	Storm T4	CPS	NW corner of Commonwealth Av	Fourth St	City	City	1/1/08	B45	300-2	City	City	1x/ 3 mos	
309	Storm T4	CPS	NE corner of Fifth St	Commonwealth Av	City	City	1/1/08	B46	300-2	City	City	1x/ 3 mos	
310	Storm T4	CPS	NW corner of Fifth St	Commonwealth Av	City	City	11/1/08	B47	300-2	City	City	1x/ 3 mos	
311	Storm T4	CPS	NW corner of Commonwealth Av	Fifth St	City	City	11/1/08	B48	300-2	City	City	1x/ 3 mos	
312	Storm T4	CPS	NE corner of Sixth St	Commonwealth Av	City	City	12/1/08	B49	300-2	City	City	1x/ 3 mos	
313	United S	CPS	NE corner Granada	Main	City	City	11/17/14	B5	300-3	City	City	1x/ 3 mos	
314	Storm T4	CPS	NW corner of Sixth St	Commonwealth Av	City	City	12/1/08	B50	300-2	City	City	1x/ 3 mos	

315	Storm T	CPS	NW corner of Commonwealth Av	Sixth St	City	City	12/1/08	B51	300-2	City	City	1x/ 3 mos	
316	Storm T	CPS	NE corner of Commonwealth Av	Atlantic Bl	City	City	1/1/08	B52	300-2	City	City	1x/ 3 mos	
317	Storm T	CPS	NE corner of Atlantic Bl	Commonwealth Av	City	City	1/1/08	B53	300-2	City	City	1x/ 3 mos	
318	Storm T	CPS	NE corner of Atlantic Bl	Irving Pl	City	City	11/1/08	B54	300-2	City	City	1x/ 3 mos	
319	Storm T	CPS	NE corner of Atlantic Bl	Washington St	City	City	12/1/08	B55	300-2	City	City	1x/ 3 mos	
320	Storm T	CPS	SE corner of Commonwealth Av	Atlantic Bl	City	City	11/1/08	B56	300-2	City	City	1x/ 3 mos	
321	Storm T	CPS	SW corner of Commonwealth Av	Sixth St	City	City	12/1/08	B57	300-2	City	City	1x/ 3 mos	
322	Storm T	CPS	SW corner of Commonwealth Av	Fourth St	City	City	1/1/08	B58	300-2	City	City	1x/ 3 mos	
323	Storm T	CPS	SW corner of Commonwealth Av	Fifth St	City	City	12/1/08	B59	300-2	City	City	1x/ 3 mos	
324	United S	CPS	NW corner of Main St	Valencia Ave				B6			City	1x/ 3 mos	
325	Storm T	CPS	SE corner of Commonwealth Av	Fourth St	City	City	1/1/08	B60	300-2	City	City	1x/ 3 mos	
326	Storm T	CPS/ARS	SW corner of Third St	Commonwealth Av	City	City	1/1/2008 07/2015	B61	300-2	City	City	1x/ 3 mos	
327	Storm T	CPS/ARS	SE corner of Third St	Commonwealth Av	City	City	1/1/2008 07/2015	B62	300-2	City	City	1x/ 3 mos	
328	United S	ARS	SE corner Commonwealth	Third	City	City	7/20/15	B63	300-3	City	City	1x/ 3 mos	
329	Storm T	CPS	NW Corner of Mission Rd	Garfield Av	City	City	2/1/05	B64	300-2	City	City	1x/ 3 mos	
330	Storm T	CPS/ARS	NE Corner of Atlantic Bl	Mission Road	City	City	2/1/2005 07/2015	B65	300-2	City	City	1x/ 3 mos	
331	Storm T	CPS	NW corner of Chapel Av	Main St	City	City	12/1/08	B66	300-2	City	City	1x/ 3 mos	Installed Stormtek CPS
332	United S	CPS	NE corner Mission Rd	Granada	City	City	1/5/15	B67	300-2	City	City	1x/ 3 mos	
333	United S	CPS	NE corner Granada	Mission Rd	City	City	1/5/15	B68	300-2	City	City	1x/ 3 mos	
334	United S	CPS	NW corner San Pascual	Mission	City	City	1/5/15	B69	300-2	City	City	1x/ 3 mos	
335	United S	CPS	SW corner Main	Valencia	City	City	1/5/15	B7	300-2	City	City	1x/ 3 mos	
336	United S	CPS	NE corner San Pasqual	Mission	City	City	1/5/15	B70	300-2	City	City	1x/ 3 mos	
337	United S	CPS	NW Mission	San Pascual	City	City	1/5/15	B71	300-2	City	City	1x/ 3 mos	
338	United S	CPS	SW corner Chapel	Mission Rd	City	City	1/12/15	B72	301	City	City	1x/ 3 mos	
339	United S	CPS	Chapel	Mission Rd	City	City	1/12/15	B73	301	City	City	1x/ 3 mos	
340	United S	CPS	Mission South Side	Chapel Ave	City	City	1/12/15	B74	300-2	City	City	1x/ 3 mos	
341	United S	CPS	NW corner Mission	Chapel Ave	City	City	1/12/15	B75	301	City	City	1x/ 3 mos	
342	United S	CPS	WS Mission	Monterey	City	City	1/5/15	B76	300-2	City	City	1x/ 3 mos	
343	United S	CPS	MES Monterey	Mission	City	City	1/5/15	B77	300-2	City	City	1x/ 3 mos	
344		N/A	NW Mission	Monterey	City	City		B78		City	City	1x/ 3 mos	Drains to B76
345	United S	CPS	ES Stoneman	Mission	City	City	1/5/15	B79	300-2	City	City	1x/ 3 mos	
346	United S	CPS	NW corner Main St	El Molino	City	City	11/17/14	B8	300-3	City	City	1x/ 3 mos	
347		N/A	WS Stoneman	Mission	City	City		B80		City	City	1x/ 3 mos	Drains to B81
348	United S	CPS	NW Mission	Stoneman Ave	City	City	1/5/15	B81	300-2	City	City	1x/ 3 mos	
349	United S	CPS	Garfield ES	Mission	City	City	1/7/15	B82	300-2	City	City	1x/ 3 mos	
350	United S	CPS	Garfield WS	Mission	City	City	1/7/15	B83	300-2	City	City	1x/ 3 mos	
351	United S	CPS	Mission Center Medium	Garfield Ave	City	City	1/12/15	B84	301	City	City	1x/ 3 mos	
352	United S	CPS	ES First	Mission	City	City	1/7/15	B85	300-2	City	City	1x/ 3 mos	
353	United S	CPS	WS First NW Bottom	Mission	City	City	1/7/15	B86	300-2	City	City	1x/ 3 mos	
354	United S	CPS	WS First NW Top	Mission	City	City	1/7/15	B87	300-2	City	City	1x/ 3 mos	
355	United S	CPS	Mission	Second St	City	City	1/7/15	B88	300-2	City	City	1x/ 3 mos	
356	United S	CPS	ES Second	Mission	City	City	1/7/15	B89	300-2	City	City	1x/ 3 mos	
357	United S	CPS	NW corner El Molino	Main	City	City	3/12/15	B9	300-3	City	City	1x/ 3 mos	
358	United S	CPS	WS Second	Mission	City	City	1/7/15	B90	300-2	City	City	1x/ 3 mos	
359	United S	CPS	WS Third	Mission	City	City	1/7/15	B91	300-2	City	City	1x/ 3 mos	
360	United S	CPS	ES Third	Mission	City	City	1/7/15	B92	300-2	City	City	1x/ 3 mos	
361	United S	CPS	SE corner Mission Rd	Fourth	City	City	1/12/15	B93	300-2	City	City	1x/ 3 mos	
362	United S	CPS	NE Mission	Fourth	City	City	1/8/15	B94	300-2	City	City	1x/ 3 mos	
363	United S	CPS	ES Fourth	Mission	City	City	1/8/15	B95	300-2	City	City	1x/ 3 mos	
364	United S	CPS	ES Fourth	Mission	City	City	1/8/15	B96	300-2	City	City	1x/ 3 mos	
365	United S	CPS	WS Fourth	Mission	City	City	1/8/15	B97	300-2	City	City	1x/ 3 mos	
366	United S	CPS	WS Fourth	Mission	City	City	1/8/15	B98	300-2	City	City	1x/ 3 mos	
367	United S	CPS	NE Mission	Fifth	City	City	1/8/15	B99	300-2	City	City	1x/ 3 mos	

368	Storm T	CPS	NE corner of Valley Bl	Edith St	City	City	1/1/08	C1	300-2	City	City	1x/ 3 mos	
369	Storm T	CPS/ARS	NE corner of Benito Av	Valley Bl	City	City	1/1/2008 07/2015	C10	300-2	City	City	1x/ 3 mos	
370	United S	CPS	SW corner Glendon	Elm	City	City	12/9/14	C100	300-2	City	City	1x/ 3 mos	
371	United S	CPS	NW corner Elm	Glendon	City	City	12/9/14	C101	300-2	City	City	1x/ 3 mos	
372	United S	CPS	NW corner Atlantic	Glendon	City	City	1/7/15	C102	300-2	City	City	1x/ 3 mos	
373	United S	CPS	NE corner Norwood	Fremont Ave	City	City	12/9/14	C103	300-2	City	City	1x/ 3 mos	
374	United S	CPS	NE corner Fremont	Norwood	City	City	12/9/14	C104	300-2	City	City	1x/ 3 mos	
375	United S	CPS	WS 2309 S. Date Ave	San Clemente	City	City	12/15/14	C105	300-2	City	City	1x/ 3 mos	
376		N/A	NW corner Marguerita Ave	Hellman	City	City		C106		City	City	1x/ 3 mos	Connects to C107
377	United S	CPS	NE corner Marguerita	Hellman	City	City	1/13/15	C107	300-2	City	City	1x/ 3 mos	
378	United S	CPS	NW corner Glendon Way & Olive	Olive				C108			City	1x/ 3 mos	
379	United S	CPS	NE corner Olive	Glendon Way	City	City	1/12/15	C109	300-2	City	City	1x/ 3 mos	
380	Storm T	CPS/ARS	NW corner of Benito Ave	Valley Bl	City	City	1/1/2008 07/2015	C11	300-2	City	City	1x/ 3 mos	
381	United S	CPS	NE corner Curtis	Glendon Way	City	City	1/12/15	C110	300-2	City	City	1x/ 3 mos	
382	United S	CPS	NW corner Curtis	Glendon Way	City	City	1/12/15	C111	300-2	City	City	1x/ 3 mos	
383	United S	CPS	NW corner Curtis	Norwood	City	City	1/12/15	C112	300-2	City	City	1x/ 3 mos	
384	United S	CPS	NE corner Curtis	Norwood	City	City	1/12/15	C113	300-2	City	City	1x/ 3 mos	
385	United S	CPS	NW corner Olive & Norwood	Olive				C114			City	1x/ 3 mos	
386	United S	CPS	NE corner Olive	Norwood	City	City	1/12/15	C115	300-2	City	City	1x/ 3 mos	
387	United S	CPS	NE corner Norwood	Olive	City	City	1/12/15	C116	300-2	City	City	1x/ 3 mos	
388	United S	CPS	NW corner Valley	Benito	City	City	1/13/15	C117	300-2	City	City	1x/ 3 mos	
389	United S	CPS	NW corner Marguerita Ave	Shorb	City	City	12/9/14	C118	300-2	City	City	1x/ 3 mos	
390		N/A	NW corner Shorb	Marguerita	City	City		C119		City	City	1x/ 3 mos	Connects to C118
391	Storm T	CPS/ARS	NE corner of Valley Bl, Easterly	Fremont Av	City	City	11/1/2008 07/2015	C12	300-2	City	City	1x/ 3 mos	
392	United S	CPS	NE corner Marguerita	Shorb	City	City	12/9/14	C120	300-2	City	City	1x/ 3 mos	
393	United S	CPS	NW corner Ross	Hellman	City	City		C122		City	City	1x/ 3 mos	
394	United S	CPS	NW corner Hellman	Ross	City	City	12/19/14	C123	300-2	City	City	1x/ 3 mos	
395		N/A	NE corner Hellman	Westmont	City	City		C124		City	City	1x/ 3 mos	Drains to C123
396	United S	CPS	2815 Ramona North	BTW Meridian & Orange Grove	City	City	12/19/14	C125	300-2	City	City	1x/ 3 mos	
397	United S	CPS	SS Ramona	Near MPK Golf Course Road	City	City	12/19/14	C126	300-2	City	City	1x/ 3 mos	
398	United S	CPS	SS Ramona	Near Westminster	City	City	1/2/15	C127	300-2	City	City	1x/ 3 mos	
399	United S	ARS	SS 3200 Ramona South Apt. Building	Westminster	City	City	7/20/15	C128	300-2	City	City	1x/ 3 mos	
400	United S	CPS	2900 Garvey Ave	Ramona	City	City	1/2/15	C129	300-2	City	City	1x/ 3 mos	
401	United S	ARS	NE corner Fremont Ave.	Valley Blvd	City	City	7/21/15	C13	300-2	City	City	1x/ 3 mos	
402	United S	CPS	SW corner Ramona	Westminister	City	City	1/2/15	C130	300-2	City	City	1x/ 3 mos	
403	United S	CPS	SW corner 2904 Ramona	Garvey	City	City	1/2/15	C131	300-2	City	City	1x/ 3 mos	
404		N/A	2727 Carlos Ave. South Side	Garvey	City	City		C132		City	City	1x/ 3 mos	Drains to C133
405	United S	CPS	2727 Carlos Ave. North Side (C132 Dumps into)	Garvey	City	City	12/23/14	C133	300-2	City	City	1x/ 3 mos	Dumps into C132
406		N/A	2736 Montezuma South Side	BTWN Garvey & Florentina	City	City		C134		City	City	1x/ 3 mos	Drains to C135
407	United S	CPS	2807 Montezuma North Side	BTWN Garvey & Florentina	City	City	12/23/14	C135	300-2	City	City	1x/ 3 mos	
408	United S	CPS	End of Balzac West	Capetown	City	City	1/14/15	C136	300-2	City	City	1x/ 3 mos	
409	United S	CPS	End of Capetown	Balzac	City	City	12/9/14	C137	300-2	City	City	1x/ 3 mos	
410	United S	CPS	End of Julep	Chamwood	City	City	12/9/14	C138	300-2	City	City	1x/ 3 mos	
411	United S	CPS	NE corner Balzac	Winthrop	City	City	1/14/15	C139	300-2	City	City	1x/ 3 mos	
412	United S	ARS	NE corner Valley Blvd (Westerly CB)	Fremont Ave	City	City	7/22/15	C14	300-2	City	City	1x/ 3 mos	
413	United S	CPS	NW corner Ramona	Warwick	City	City	1/2/15	C140	301	City	City	1x/ 3 mos	
414	United S	CPS	NE corner Ramona	Warwick	City	City	12/10/14	C141	301	City	City	1x/ 3 mos	
415	United S	CPS	NE corner Fremont	Carlos	City	City	12/15/14	C142	300-2	City	City	1x/ 3 mos	
416	United S	CPS	NE corner Carlos	Fremont Ave	City	City	12/15/14	C143	300-2	City	City	1x/ 3 mos	
417	United S	CPS	SE corner Carlos	Fremont Ave	City	City	12/15/14	C144	300-2	City	City	1x/ 3 mos	
418	United S	CPS	NW corner Whitney	Essexfells	City	City	12/19/14	C146	300-2	City	City	1x/ 3 mos	
419	United S	CPS	NE corner Whitney	Essexfells	City	City	12/19/14	C147	300-2	City	City	1x/ 3 mos	
420	United S	CPS	NW corner Essexfells	Stranahan	City	City	12/19/14	C148	300-2	City	City	1x/ 3 mos	

421	United S	N/A	NW corner Stranahan	Essexfells	City	City		C149		City	City	1x/ 3 mos	Drains to C150
422	Storm T	CPS	SW corner of Valley Bl	Marguerita St	City	City	12/1/08	C15	300-2	City	City	1x/ 3 mos	
423	United S	CPS	NE corner Stranahan	Essexfells	City	City	12/19/14	C150	300-2	City	City	1x/ 3 mos	
424	United S	CPS	NW corner Sarazen	Essexfells	City	City	12/23/14	C151	300-2	City	City	1x/ 3 mos	
425	United S	CPS	SW corner Sarazen	Essexfells	City	City	12/23/14	C152	300-2	City	City	1x/ 3 mos	
426	United S	CPS	Garvey Ave	Essexfells	City	City	12/23/14	C153	300-2	City	City	1x/ 3 mos	
427	United S	CPS	SE corner Sarazen	Midwickhill	City	City	12/23/14	C154	300-2	City	City	1x/ 3 mos	
428	United S	N/A	NE corner Sarazen	Midwickhill	City	City		C155		City	City	1x/ 3 mos	Drains to C154
429	United S	CPS	South Side Sarazen South to Garvey of Midwickhill	Midwickhill	City	City	12/23/14	C156	300-2	City	City	1x/ 3 mos	
430	United S	CPS	NW corner Sarazen	Siwanoy	City	City	12/23/14	C157	300-2	City	City	1x/ 3 mos	
431	United S	N/A	NW corner Sarazen	Pine Valley	City	City		C158		City	City	1x/ 3 mos	Drains to C159
432	United S	CPS	SW corner Sarazen	Pine Valley	City	City	12/23/14	C159	300-2	City	City	1x/ 3 mos	
433	United S	N/A	NE corner Electric Ave (Dumps into C183)	Hellman	City	City		C16		City	City	1x/ 3 mos	Drains to C183
434	United S	N/A	NW corner Weatherhead	Sarazen	City	City		C160		City	City	1x/ 3 mos	Drains to C161
435	United S	CPS	SE corner Sarazen	Weatherhead	City	City	12/23/14	C161	300-2	City	City	1x/ 3 mos	
436	United S	N/A	NE corner Sarazen (C161 Dumps Into)	Weatherhead	City	City		C162		City	City	1x/ 3 mos	Drains to C161
437	United S	CPS	2021 Garvey (ES on Garvey)	Ramona	City	City	1/2/15	C163	300-2	City	City	1x/ 3 mos	
438	United S	CPS	SE corner Curtis	Hellman	City	City	1/16/15	C164	300-2	City	City	1x/ 3 mos	
439	United S	CPS	SW corner Curtis	Hellman	City	City	1/16/15	C165	300-2	City	City	1x/ 3 mos	
440		NONE	WS Fremont Underpass 10 FRWY NS	Fremont				C166					Cannot install No device
441	United S	CPS	NW corner La Paloma	Hellman	City	City	12/18/14	C167	300-2	City	City	1x/ 3 mos	
442	United S	CPS	NW corner Valley	Atlantic	City	City	12/9/14	C168	300-2	City	City	1x/ 3 mos	
443	United S	CPS	WS Atlantic Underpass 10 FRWY (North End)	Ramona	City	City	1/16/15	C169	301	City	City	1x/ 3 mos	
444	United S	ARS	NW corner Electric Ave	Hellman	City	City	7/23/15	C17	300-2	City	City	1x/ 3 mos	
445	United S	CPS	WS Atlantic underpass 10 FRWY (South End)	Ramona	City	City	1/16/15	C170	301	City	City	1x/ 3 mos	
446		NONE	WS Atlantic underpass 10 FRWY (South End)	Atlantic				C171					Cannot install No device
447	United S	CPS	ES 2700 El Paseo	Ramona	City	City	1/14/15	C172	300-2	City	City	1x/ 3 mos	
448		NONE	Ramona Rd & Marguerita Underpass (Under FRWY)	at T				C173					Cannot install No device
449	United S	CPS	SW corner Ross	Meridian	City	City	12/11/14	C175	300-2	City	City	1x/ 3 mos	
450	United S	CPS	NE corner Hellman	Elm	City	City	1/16/15	C176	300-2	City	City	1x/ 3 mos	
451	United S	CPS	NW corner Norwood	Olive	City	City	1/12/15	C177	300-2	City	City	1x/ 3 mos	
452	United S	CPS	NW corner Glendon Way	Olive Ave	City	City	1/12/15	C178	300-2	City	City	1x/ 3 mos	
453	United S	CPS	NE corner Glendon Way	Olive Ave	City	City	1/12/15	C179	300-2	City	City	1x/ 3 mos	
454	United S	CPS	NW corner Hellman	Electric Ave.	City	City	1/16/15	C18		City	City	1x/ 3 mos	
455	United S	CPS	1905 La Golondrina Ave NW side	Ross Ave	City	City	12/11/14	C180	300-2	City	City	1x/ 3 mos	
456	United S	CPS	NE corner Hellman	Electric Ave.	City	City	1/16/15	C183	300-2	City	City	1x/ 3 mos	
457	United S	CPS	SS 2812 Midwick Mid Block	Midwick				C184			City	1x/ 3 mos	
458	United S	CPS	NE corner Avondale & Warwick	Avondale				C185			City	1x/ 3 mos	
459	United S	CPS	SS Sarazen & Siwanoy at Garvey	Garvey				C186			City	1x/ 3 mos	
460	United S	CPS	SS Sarazen & Siwanoy at Hitchcock	Garvey				C187			City	1x/ 3 mos	
461	United S	CPS	WS 1709 S Westmont/ S of Valley	Carillo				C188			City	1x 3 mos	
462		N/A	SW corner Hellman	Electric Ave.	City	City		C19		City	City	1x/ 3 mos	Drains to C18
463	Storm T	CPS	NW corner of Edith St	Valley Bl	City	City	1/1/08	C2	300-2	City	City	1x/ 3 mos	
464	United S	CPS	SE corner Hellman	Electric Ave.	City	City	1/16/15	C20	300-2	City	City	1x/ 3 mos	
465	United S	CPS	NE corner Electric	Midwickhill	City	City		C21	300-2	City	City	1x/ 3 mos	
466	United S	ARS	NW corner Electric Ave	Midwickhill	City	City	7/25/15	C22	300-2	City	City	1x/ 3 mos	
467	United S	CPS	NW corner Midwickhill	Electric Ave.	City	City	1/16/15	C23	300-2	City	City	1x/ 3 mos	
468	United S	ARS	SW corner Midwickhill	Electric Ave.	City	City	7/26/15	C24	300-2	City	City	1x/ 3 mos	
469	United S	CPS	NW corner Marguerita Ave	N Ramona	City	City	3/12/15	C25	300-2	City	City	1x/ 3 mos	
470	United S	CPS	NE corner Marguerita	Ramona	City	City	3/12/15	C26	300-2	City	City	1x/ 3 mos	
471	United S	CPS	NW corner Curtis	Ramona	City	City	1/15/15	C27	300-2	City	City	1x/ 3 mos	
472	United S	CPS	NE corner Curtis	Ramona	City	City	1/15/15	C28	300-2	City	City	1x/ 3 mos	
473	United S	CPS	NW corner Olive	Ramona	City	City	1/15/15	C29	300-2	City	City	1x/ 3 mos	

474	Storm T	CPS	NE corner of Edith St	Valley Bl	City	City	1/1/08	C3	300-2	City	City	1x/ 3 mos	
475		N/A	NE corner Olive	Ramona	City	City		C30		City	City	1x/ 3 mos	Drains to C29
476	United S	ARS	SE corner Fremont	Montezuma	City	City	7/27/15	C31	300-2	City	City	1x/ 3 mos	
477	United S	CPS	SE corner Montezuma	Fremont Ave	City	City	3/12/15	C32	300-2	City	City	1x/ 3 mos	
478	United S	CPS	NS midblock Edgewood (Dumps into C34)	Montezuma	City	City	3/12/15	C33	300-2	City	City	1x/ 3 mos	
479	United S	CPS	SS midblock Edgewood	Montezuma	City	City	3/12/15	C34	300-2	City	City	1x/ 3 mos	
480	United S	CPS	NS 2604 N Ramona	El Paseo	City	City	1/2/15	C35	301	City	City	1x/ 3 mos	
481	United S	CPS	SE corner Hellman	Fremont Ave	City	City	1/15/15	C36	301	City	City	1x/ 3 mos	
482		NONE	WS Fremont & 10 FRWY (South End)					C37					Cannot install No device
483		NONE	ES Fremont & FRWY (North End)					C38					Cannot install No device
484	United S	CPS	NE corner Hellman	Fremont Ave	City	City	2/15/15	C39	300-2	City	City	1x/ 3 mos	
485	Storm T	CPS	NW corner of Valley Bl	Edith St	City	City	1/1/08	C4	300-2	City	City	1x/ 3 mos	
486	United S	CPS	NW corner Hellman	Elm	City	City	1/15/15	C40	300-2	City	City	1x/ 3 mos	
487	United S	CPS	NW corner Fremont	Hellman	City	City	2/11/15	C41	300-2	City	City	1x/ 3 mos	
488		N/A	NE corner Fremont	Hellman	City	City		C42		City	City	1x/ 3 mos	Drains to C39
489	United S	CPS	NE corner Hellman	Elm	City	City	1/13/14	C43	300-2	City	City	1x/ 3 mos	
490	United S	CPS	NE corner Ramona	Primrose	City	City	1/15/15	C44	300-2	City	City	1x/ 3 mos	
491	United S	CPS	NW corner Primrose Ave	Ramona	City	City	1/15/15	C45	300-2	City	City	1x/ 3 mos	
492	United S	CPS	NE corner Hellman	Primrose	City	City	1/15/15	C46	300-2	City	City	1x/ 3 mos	
493	United S	ARS	NE corner Primrose Ave	Hellman	City	City	7/28/15	C47	300-2	City	City	1x/ 3 mos	
494		N/A	NW corner Edgewood	Ramona	City	City		C48		City	City	1x/ 3 mos	Drains to C49
495		N/A	NE corner Edgewood	Ramona	City	City		C49		City	City	1x/ 3 mos	Drains to C51
496	Storm T	CPS/ARS	NE corner of Margarita St	Valley Bl	City	City	12/1/2008 07/2015	C5	300-2	City	City	1x/ 3 mos	
497	United S	CPS	NW corner Ramona	Edgewood	City	City	1/14/15	C50	300-2	City	City	1x/ 3 mos	
498	United S	CPS	NE corner Ramona	Edgewood	City	City	1/14/15	C51	300-2	City	City	1x/ 3 mos	
499		NONE	ES Fremont underpass Middle of Underpass					C52					
500	United S	CPS	NE corner Curtis	Midwickhill	City	City	1/14/15	C53	300-2	City	City	1x/ 3 mos	
501	United S	CPS	NW corner Curtis	Midwickhill	City	City	1/14/15	C54	300-2	City	City	1x/ 3 mos	
502	United S	CPS	Opposite of 2212 Hathaway WS	Midwickhill	City	City	1/16/15	C55	300-2	City	City	1x/ 3 mos	
503	United S	CPS	2212 Hathaway ES	Midwickhill	City	City	1/16/15	C56	300-2	City	City	1x/ 3 mos	
504	United S	CPS	ES corner Westmont	Viscount	City	City	1/15/15	C57	300-2	City	City	1x/ 3 mos	
505	United S	CPS	WS corner Westmont	Viscount	City	City	12/9/14	C58	300-2	City	City	1x/ 3 mos	
506	United S	CPS	SE corner Hellman	Westmont	City	City	12/10/14	C59	300-2	City	City	1x/ 3 mos	
507	Storm T	CPS/ARS	NW corner of Valley Bl	Margarita St	City	City	12/1/2008 07/2015	C6	300-2	City	City	1x/ 3 mos	
508	United S	CPS	SW corner Hellman	Westmont	City	City	12/9/14	C60	300-2	City	City	1x/ 3 mos	
509	United S	CPS	Warwick end of culdesac	Westmont	City	City	12/9/14	C61	300-2	City	City	1x/ 3 mos	
510	United S	CPS	Danzig NW end of culdesac	Westmont	City	City	12/9/14	C62	300-2	City	City	1x/ 3 mos	
511	United S	CPS	Jurich end of culdesac	Westmont	City	City	12/9/14	C64	300-2	City	City	1x/ 3 mos	
512	United S	CPS	2321 WS Charnwood midblock	Julep	City	City	12/9/14	C65	300-2	City	City	1x/ 3 mos	
513	United S	CPS	2316 ES Charnwood midblock	Julep	City	City	12/9/14	C66	300-2	City	City	1x/ 3 mos	
514	United S	CPS	NW corner Hellman	La Paloma	City	City	12/18/14	C67	300-2	City	City	1x/ 3 mos	
515	United S	CPS	NE corner Hellman	Meridian	City	City	12/18/14	C68	300-2	City	City	1x/ 3 mos	
516	United S	CPS	Hellman North midblock	La Paloma	City	City	12/18/14	C69	301	City	City	1x/ 3 mos	
517	Storm T	CPS	NW corner of Electric Av	Valley Bl	City	City	1/1/08	C7	300-2	City	City	1x/ 3 mos	
518	United S	CPS	Hellman South midblock	La Paloma	City	City	12/19/14	C70	301	City	City	1x/ 3 mos	
519	United S	CPS	NE corner Meridian	Hellman	City	City	12/18/14	C71	300-2	City	City	1x/ 3 mos	
520	United S	CPS	NW corner Meridian	Hellman	City	City	12/18/14	C72	300-2	City	City	1x/ 3 mos	
521	United S	CPS	NW corner Hellman	Meridian	City	City	12/18/14	C73	300-2	City	City	1x/ 3 mos	
522	United S	CPS	NE corner Hellman	Orange Grove	City	City	12/18/14	C74	300-2	City	City	1x/ 3 mos	
523	United S	CPS	SE corner Orange Grove	Hellman	City	City	12/19/14	C75	300-2	City	City	1x/ 3 mos	
524	United S	CPS	SE corner Hellman	Orange Grove	City	City	12/19/14	C76	300-2	City	City	1x/ 3 mos	
525	United S	CPS	NW corner Hellman	Orange Grove	City	City	12/18/14	C78	300-2	City	City	1x/ 3 mos	
526	United S	CPS	2801 Meridian NW corner	Ross Ave	City	City	12/11/14	C79	300-2	City	City	1x/ 3 mos	

527	Storm T	CPS	NE corner of Electric Av	Valley Bl	City	City	1/1/08	C8	300-2	City	City	1x/ 3 mos	
528	United S	CPS	2809 Meridian NW corner	Ross	City	City	12/11/14	C80	300-2	City	City	1x/ 3 mos	
529	United S	CPS	SW corner Ramona Terrace	Ross	City	City	12/11/14	C81	300-2	City	City	1x/ 3 mos	
530	United S	CPS	SE corner Ramona Terrace	Ross				C82			City	1x/ 3mos	Catch basin not found
531	United S	CPS	NE corner Ramona Terrace	Ross	City	City	12/11/14	C83	300-2	City	City	1x/ 3 mos	
532	United S	CPS	SE corner Ross	Ramona Terrace	City	City	12/11/14	C84	300-2	City	City	1x/ 3 mos	
533	United S	CPS	NE corner Ross	Ramona Terrace	City	City	12/11/14	C85	300-2	City	City	1x/ 3 mos	
534	United S	CPS	NW corner Ramona Terrace	Ross	City	City	12/11/14	C86	300-2	City	City	1x/ 3 mos	
535	United S	CPS	Midwick Midblock NS	Ramona	City	City	12/11/14	C88	300-2	City	City	1x/ 3 mos	
536	United S	CPS	1709 Westmont midblock WS	Cabrillo	City	City	12/10/14	C89	301	City	City	1x/ 3 mos	
537	Storm T	CPS	NW corner Valley Bl	Electric Av	City	City	11/1/08	C9	300-2	City	City	1x/ 3 mos	
538	United S	CPS	1704 Westmont midblock ES	Cabrillo	City	City	12/10/14	C90	301	City	City	1x/ 3 mos	
539	United S	CPS	Cabrillo WS	Terrace	City	City	12/10/14	C91	300-2	City	City	1x/ 3 mos	
540	United S	N/A	NW corner Fremont	Ross	City	City		C92		City	City	1x/ 3 mos	Drains to C95
541	United S	CPS	NE corner Fremont	Ross	City	City	2/11/15	C93	300-2	City	City	1x/ 3 mos	
542	United S	CPS	NW corner Elm	Ross	City	City	1/13/15	C94	300-2	City	City	1x/ 3 mos	
543	United S	CPS	NW corner Ross	Elm	City	City	1/13/15	C95	300-2	City	City	1x/ 3 mos	
544	United S	CPS	NE corner Elm	Ross	City	City	1/13/15	C96	300-2	City	City	1x/ 3 mos	
545	United S	CPS	NW corner Glendon Way	Elm	City	City	12/9/14	C97	300-2	City	City	1x/ 3 mos	
546	United S	CPS	NE corner Fremont	Glendon	City	City	12/9/14	C98	300-2	City	City	1x/ 3 mos	
547	United S	CPS	NE corner Elm	Glendon	City	City	12/9/14	C99	300-2	City	City	1x/ 3 mos	
548	United S	CPS	NW corner Norwood	New	City	City	1/14/15	D10	300-2	City	City	1x/ 3 mos	
549	United S	CPS	SW corner New	Camelia	City	City	1/13/15	D11	300-2	City	City	1x/ 3 mos	
550	United S	CPS	NW corner Violeta	New	City	City	1/14/15	D12	300-2	City	City	1x/ 3 mos	
551	United S	CPS	NW corner New	Violeta	City	City	1/14/15	D13	300-2	City	City	1x/ 3 mos	
552	United S	CPS	NW corner Camelia	New	City	City	1/13/15	D14	300-2	City	City	1x/ 3 mos	
553	United S	CPS	NW corner New	Camelia	City	City	1/13/15	D15	300-2	City	City	1x/ 3 mos	
554	United S	CPS	SW corner Valley	New	City	City	1/14/15	D16	300-2	City	City	1x/ 3 mos	
555	United S	N/A	NW corner Shorb	New	City	City		D17		City	City	1x/ 3 mos	Drains to D19
556	United S	CPS	NW corner New	Shorb	City	City	1/14/15	D19	300-2	City	City	1x/ 3 mos	
557	United S	CPS	SE corner Almansor	San Marino	City	City	1/14/15	D20	300-2	City	City	1x/ 3 mos	
558	United S	CPS	NE corner Almansor	San Marino	City	City	1/14/15	D22	300-2	City	City	1x/ 3 mos	
559	United S	CPS	NW corner Almansor	San Marino	City	City	1/14/15	D23	300-2	City	City	1x/ 3 mos	
560	United S	CPS	SW corner San Marino	Almansor	City	City	1/14/15	D24	300-2	City	City	1x/ 3 mos	
561	United S	CPS	SW corner Almansor	San Marino	City	City		D25		City	City	1x/ 3 mos	
562	United S	CPS	Underpass Garfield 10 FRWY WS (N of FRWY)	10 FRWY	City	City	1/13/15	D26	301	City	City	1x/ 3 mos	
563	United S	CPS	Underpass Garfield 10 FRWY WS (Mid of FRWY)	10 FRWY	City	City	1/13/15	D27	301	City	City	1x/ 3 mos	
564	United S	CPS	Underpass Garfield 10 FRWY WS (S of FRWY)	10 FRWY	City	City	1/12/15	D28	301	City	City	1x/ 3 mos	
565		NONE	Underpass Garfield 10 FRWY ES (N of FRWY)	10 FRWY				D29			City	1x/ 3 mos	
566		NONE	Underpass Garfield 10 FRWY ES (S of FRWY)	10 FRWY				D31			City	1x/ 3 mos	
567		NONE	Underpass Garfield 10 FRWY ES (Mid of FRWY)	10 FRWY				D30			City	1x/ 3 mos	
568	United S	CPS	NE corner Garfield	Glendon	City	City	1/12/15	D32	301	City	City	1x/ 3 mos	
569	United S	CPS	SE corner Glendon Way	Garfield	City	City	1/12/15	D33	301	City	City	1x/ 3 mos	
570	United S	CPS	NW corner Glendon & Garfield	Garfield				D34			City	1x/ 3 mos	
571	United S	CPS	SW corner Glendon	Garfield	City	City	1/12/15	D35	301	City	City	1x/ 3 mos	
572	United S	CPS	NW corner Glendon & Garfield	Glendon				D36			City	1x/ 3 mos	
573		N/A	ES 6th St underpass (N of FRWY)	Ramona	City	City		D37		City	City	1x/ 3 mos	Connects to D38
574	United S	CPS	ES 6th St underpass (Mid of FRWY)	Ramona	City	City	1/13/15	D38	301	City	City	1x/ 3 mos	
575		NONE	ES 6th St underpass(S of FRWY)	10 FRWY				D39			City	1x/ 3 mos	Tunnel inside pipe
576	United S	CPS	NE corner Atlantic	Glendon Way	City	City	1/13/15	D40	300-2	City	City	1x/ 3 mos	
577	United S	CPS	SW corner Valley	Vega	City	City	1/13/15	D41	300-2	City	City	1x/ 3 mos	
578	United S	CPS	NW corner Valley	Vega	City	City	1/13/15	D42	300-2	City	City	1x/ 3 mos	
579	United S	CPS	NE corner Valley	Atlantic	City	City	1/13/15	D43	301	City	City	1x/ 3 mos	

580		NONE	ES Atlantic Underpass 10 FRWY (South End)	10 FRWY					D44			City	1x/ 3 mos		
581		NONE	ES Atlantic Underpass 10 FRWY (North End)	10 FRWY					D45			City	1x/ 3 mos		
582		N/A	NW corner Ramona under Bridge WS	Almansor	City	City			D46			City	City	1x/ 3 mos	Drains to D47
583	United S	CPS	NE corner Ramona under Bridge ES	Almansor	City	City	1/13/15		D47	301		City	City	1x/ 3 mos	
584	United S	CPS	NW corner New	Valley	City	City	1/13/15		D48	300-2		City	City	1x/ 3 mos	
585	United S	CPS	NW corner San Marino	Almansor	City	City	1/13/15		D49	300-2		City	City	1x/ 3 mos	
586	Storm T4	CPS/ARS	NW corner of Garfield Av	Valley Bl	City	City	12/1/2008 07/2015		D5	300-2		City	City	1x/ 3 mos	
587	United S	CPS	NE corner Chapel & Shorb	Chapel					D53			City		1x/ 3 mos	
588	United S	CPS	NW corner Chapel & Shorb	Chapel					D54			City		1x/ 3 mos	
589	United S	CPS	SW corner Chapel & Shorb	Shorb					D55			City		1x/ 3 mos	
590	United S	CPS	WS S New Right before frwy on Ramp South	New Av					D57			City		1x/ 3 mos	
591	United S	CPS	WS S New Right before frwy on Ramp North	New Av					D58			City		1x/ 3 mos	
592	United S	ARS	NE corner Glendon & New	New					D59			City		1x/ 3 mos	
593	United S	CPS	WS S New adjacent St end of Cul de sac	New					D60			City		1x/ 3 mos	
594	United S	CPS	NW corner Norwood & New	New					D61			City		1x/ 3 mos	
595	United S	CPS	E Ross End of St Next to FRWY Entrance	New	City	City			D52			City	City	1x/ 3 mos	Unable to locate
596	United S	CPS	NW Norwood	Geranio Dr	City	City	1/13/15		D51	300-2		City	City	1x/ 3 mos	
597	Storm T4	CPS/ARS	NE corner of Garfield Av	Valley Bl	City	City	12/1/2008 07/2015		D6	300-2		City	City	1x/ 3 mos	
598	Storm T4	CPS/ARS	NE corner of Valley Bl	Garfield Av	City	City	12/1/2008 07/2015		D7	300-2		City	City	1x/ 3 mos	
599	United S	CPS	NW corner Glendon Way	New	City	City	1/14/15		D8	300-2		City	City	1x/ 3 mos	
600	United S	CPS	SW corner New	Violeta	City	City	1/14/15		D9	300-2		City	City	1x/ 3 mos	
601		CPS	SE Corner N ELECTRIC AV	ONEONTA AL										LACFCD	
602		CPS	SW Corner N ELECTRIC AV	ONEONTA AL										LACFCD	
603		CPS	NW Corner W ALHAMBRA RD	N RAYMOND AV										LACFCD	
604		CPS	SE Corner W ALHAMBRA RD	N RAYMOND AV										LACFCD	
605		NONE	SE Corner W ALHAMBRA RD	N RAYMOND AV										LACFCD	
606		CPS	NE Corner W ALHAMBRA RD	N RAYMOND AV										LACFCD	
607		CPS	NW Corner W ALHAMBRA RD	N BUSHNELL AV										LACFCD	
608		CPS	NW Corner N BUSHNELL AV	W ALHAMBRA RD										LACFCD	
609		CPS	NE Corner N BUSHNELL AV	W ALHAMBRA RD										LACFCD	
610		CPS	NW Corner W ALHAMBRA RD	N ELECTRIC AV										LACFCD	
611		CPS	NW Corner N ELECTRIC AV	W ALHAMBRA RD										LACFCD	
612		CPS	SW Corner W ALHAMBRA RD	N FREMONT AV										LACFCD	
613		CPS	NW Corner W ALHAMBRA RD	N FREMONT AV										LACFCD	
614		CPS	NW Corner W ALHAMBRA RD	CRESTLAKE AV										LACFCD	
615		CPS	NW Corner W ALHAMBRA RD	EMPRESS AV										LACFCD	
616		ARS	SW Corner HUNTINGTON DR N	WESTMONT DR										LACFCD	
617		CPS	N Corner HUNTINGTON DR N	WESTMONT DR										LACFCD	
618		CPS	SE Corner HUNTINGTON DR N	WESTMONT DR										LACFCD	
619		CPS	SE Corner HUNTINGTON DR N	ALPHA ST										LACFCD	
620		CPS	NE Corner WESTMONT DR	SHERWOOD AV										LACFCD	
621		CPS	NE Corner SHERWOOD AV	WESTMONT DR										LACFCD	
622		CPS	NE Corner SHERWOOD AV	WESTMONT DR										LACFCD	
623		CPS	NE Corner WESTMONT DR	LANEWOOD AV										LACFCD	
624		CPS	NE Corner LANEWOOD AV	WESTMONT DR										LACFCD	
625		CPS	NW Corner WESTMONT DR	SHERWOOD AV										LACFCD	
626		CPS	SW Corner SHERWOOD AV	WESTMONT DR										LACFCD	
627		CPS	SW Corner SHERWOOD AV	WESTMONT DR										LACFCD	
628		CPS	NW Corner S FREMONT AV	CONCORD AV										LACFCD	
629		CPS	NW Corner W COMMONWEALTH AV	S FREMONT AV										LACFCD	
630		CPS	NW Corner S FREMONT AV	W COMMONWEALTH AV										LACFCD	
631		CPS	NW Corner S FREMONT AV	POPLAR BLVD										LACFCD	

632		CPS	NW Corner S FREMONT AV	POPLAR BLVD							LACFCD		
633		CPS	NW Corner W COMMONWEALTH AV	ELM ST							LACFCD		
634		CPS	NW Corner ELM ST	W COMMONWEALTH AV							LACFCD		
635		CPS	SE Corner W COMMONWEALTH AV	ELM ST							LACFCD		
636		CPS	NE Corner W COMMONWEALTH AV	CYPRESS AV							LACFCD		
637		CPS	NW Corner W COMMONWEALTH AV	S PALM AV							LACFCD		
638		CPS	NW Corner S PALM AV	W COMMONWEALTH AV							LACFCD		
639		CPS	SW Corner W COMMONWEALTH AV	S RAYMOND AV							LACFCD		
640		CPS	NW Corner W COMMONWEALTH AV	S RAYMOND AV							LACFCD		
641		CPS	NW Corner S RAYMOND AV	W COMMONWEALTH AV							LACFCD		
642		CPS	SE Corner S PALM AV	PEPPER ST							LACFCD		
643		CPS	SE Corner PEPPER ST	S PALM AV							LACFCD		
644		CPS	NE Corner PEPPER ST	S PALM AV							LACFCD		
645		CPS	NE Corner S PALM AV	PEPPER ST							LACFCD		
646		CPS	SE Corner PEPPER ST	S RAYMOND AV							LACFCD		
647		CPS	NE Corner PEPPER ST	S RAYMOND AV							LACFCD		
648		CPS	NW Corner PEPPER ST	S MARENGO AV							LACFCD		
649		CPS	SW Corner PEPPER ST	S MARENGO AV							LACFCD		
650		CPS	SW Corner ACACIA ST	S MARENGO AV							LACFCD		
651		CPS	SW Corner ACACIA ST	S MARENGO AV							LACFCD		
652		CPS	NW Corner ACACIA ST	S MARENGO AV							LACFCD		
653		CPS	NW Corner S MARENGO AV	ACACIA ST							LACFCD		
654		CPS	NE Corner N MARENGO AV	S MARENGO AV							LACFCD		
655		CPS	NW Corner N MARENGO AV	S MARENGO AV							LACFCD		
656		CPS	NW Corner W MAIN ST	N MARENGO AV							LACFCD		
657		CPS	NE Corner ELM ST	POPLAR BLVD							LACFCD		
658		CPS	NE Corner ELM ST	POPLAR BLVD							LACFCD		
659		CPS	NE Corner POPLAR BLVD	CYPRESS AV							LACFCD		
660		ARS	NW Corner S PRIMROSE AV	POPLAR BLVD							LACFCD		
661		CPS	NE Corner S PRIMROSE AV	POPLAR BLVD							LACFCD		
662		CPS	NE Corner POPLAR BLVD	S PRIMROSE AV							LACFCD		
663		ARS	NW Corner W MAIN ST	POPLAR BLVD							LACFCD		
664		ARS	NW Corner W MAIN ST	N PALM AV							LACFCD		
665		CPS	NW Corner N MARENGO AV	CEDAR ST							LACFCD		
666		CPS	NW Corner N MARENGO AV	CEDAR ST							LACFCD		
667		CPS	NE Corner N MARENGO AV	CEDAR ST							LACFCD		
668		CPS	SE Corner CEDAR ST	N RAYMOND AV							LACFCD		
669		CPS	NE Corner CEDAR ST	N RAYMOND AV							LACFCD		
670		CPS	NE Corner N RAYMOND AV	CEDAR ST							LACFCD		
671		CPS	NW Corner N RAYMOND AV	CEDAR ST							LACFCD		
672		CPS	NE Corner CEDAR ST	N PALM AV							LACFCD		
673		CPS	SE Corner CEDAR ST	N PALM AV							LACFCD		
674		NONE	SW Corner CEDAR ST	N PALM AV							LACFCD		
675		CPS	SE Corner N PALM AV	LARCH ST							LACFCD		
676		CPS	NE Corner S FREMONT AV	W COMMONWEALTH AV							LACFCD		
677		CPS	SE Corner W ALHAMBRA RD	N OLIVE AV							LACFCD		
678		CPS	SE Corner W ALHAMBRA RD	N OLIVE AV							LACFCD		
679		CPS	SW Corner HUNTINGTON DR N	N ELECTRIC AV							LACFCD		
680		CPS	NW Corner N RAYMOND AV	W GRAND AV							LACFCD		
681		NONE	SE Corner N RAYMOND AV	W ALHAMBRA RD							LACFCD		
682		CPS	NW Corner N RAYMOND AV	W GRAND AV							LACFCD		
683		CPS	SW Corner N RAYMOND AV	W GRAND AV							LACFCD		
684		NONE	SE Corner N RAYMOND AV	W ALHAMBRA RD							LACFCD		

685		CPS	SW Corner N RAYMOND AV	W GRAND AV						LACFCD		
686		CPS	SW Corner S FREMONT AV	CONCORD AV						LACFCD		
687		CPS	NW Corner CONCORD AV	S FREMONT AV						LACFCD		
688		CPS	NE Corner CONCORD AV	S MERIDIAN AV						LACFCD		
689		CPS	NE Corner S MERIDIAN AV	CONCORD AV						LACFCD		
690		CPS	NW Corner S MERIDIAN AV	CONCORD AV						LACFCD		
691		CPS	NE Corner CONCORD AV	ORANGE GROVE AV						LACFCD		
692		CPS	NE Corner S ORANGE GROVE AV	CONCORD AV						LACFCD		
693		CPS	NW Corner S ORANGE GROVE AV	CONCORD AV						LACFCD		
694		CPS	NE Corner CONCORD AV	WESTMINSTER AV						LACFCD		
695		CPS	NE Corner WESTMINSTER AV	CONCORD AV						LACFCD		
696		CPS	NW Corner WESTMINSTER AV	CONCORD AV						LACFCD		
697		CPS	NW Corner WESTMINSTER AV	CONCORD AV						LACFCD		
698		NONE	SW Corner WESTMINSTER AV	CONCORD AV						LACFCD		
699		CPS	NW Corner WESTMONT DR	W HELLMAN AV						LACFCD		
700		CPS	NE Corner WESTMONT DR	W HELLMAN AV						LACFCD		
701		CPS	NW Corner W ROSS AV	W HELLMAN AV						LACFCD		
702		CPS	NE Corner W ROSS AV	W HELLMAN AV						LACFCD		
703		CPS	NE Corner W HELLMAN AV	W ROSS AV						LACFCD		
704		CPS	SW Corner WINTHROP DR	W HELLMAN AV						LACFCD		
705		ARS	SW Corner WINTHROP DR	W HELLMAN AV						LACFCD		
706		ARS	SW Corner WESTBORO AV	W HELLMAN AV						LACFCD		
707		CPS	SE Corner WESTBORO AV	W HELLMAN AV						LACFCD		
708		CPS	SW Corner ORANGE GROVE AV	W HELLMAN AV						LACFCD		
709		CPS	SW Corner EL PASEO	SAN CLEMENTE AV						LACFCD		
710		CPS	SE Corner EL PASEO	SAN CLEMENTE AV						LACFCD		
711		CPS	SE Corner SAN CLEMENTE AV	EL PASEO						LACFCD		
712		CPS	NE Corner EL PASEO	SAN CLEMENTE AV						LACFCD		
713		CPS	NE Corner MONTEZUMA AV	EL PASEO						LACFCD		
714		CPS	SE Corner S FREMONT AV	SAN CLEMENTE AV						LACFCD		
715		CPS	NE Corner MONTEZUMA AV	S FREMONT AV						LACFCD		
716		CPS	NE Corner S FREMONT AV	MONTEZUMA AV						LACFCD		
717		CPS	SE Corner MONTEZUMA AV	DATE AV						LACFCD		
718		CPS	SW Corner PALM AV	MONTEZUMA AV						LACFCD		
719		CPS	NW Corner S PALM AV	MONTEZUMA AV						LACFCD		
720		CPS	NE Corner S PALM AV	MONTEZUMA AV						LACFCD		
721		CPS	NE Corner MONTEZUMA AV	DATE AV						LACFCD		
722		CPS	NE Corner MONTEZUMA AV	S PRIMROSE AV						LACFCD		
723		CPS	NE Corner S PRIMROSE AV	MONTEZUMA AV						LACFCD		
724		CPS	SW Corner W HELLMAN AV	S PALM AV						LACFCD		
725		CPS	NE Corner W HELLMAN AV	S PALM AV						LACFCD		
726		CPS	SW Corner W HELLMAN AV	S PALM AV						LACFCD		
727		CPS	NE Corner S PALM AV	W HELLMAN AV						LACFCD		
728		ARS	NW Corner W HELLMAN AV	S CAMPBELL AV						LACFCD		
729		CPS	NW Corner S CAMPBELL AV	W HELLMAN AV						LACFCD		
730		ARS	NE Corner S CAMPBELL AV	W HELLMAN AV						LACFCD		
731		CPS	NW Corner W HELLMAN AV	S MARENGO AV						LACFCD		
732		CPS	SW Corner W NORWOOD PL	EDGEWOOD DR						LACFCD		
733		CPS	NW Corner W NORWOOD PL	EDGEWOOD DR						LACFCD		
734		CPS	NW Corner EDGEWOOD DR	W NORWOOD PL						LACFCD		
735		CPS	NW Corner EDGEWOOD DR	W NORWOOD PL						LACFCD		
736		CPS	NE Corner EDGEWOOD DR	W NORWOOD PL						LACFCD		
737		CPS	NE Corner W NORWOOD PL	EDGEWOOD DR						LACFCD		

738		ARS	NW Corner DATE AV	W NORWOOD PL							LACFCD		
739		CPS	NE Corner DATE AV	W NORWOOD PL							LACFCD		
740		CPS	NE Corner W NORWOOD PL	DATE AV							LACFCD		
741		CPS	NW Corner S PALM AV	W NORWOOD PL							LACFCD		
742		CPS	NE Corner S PALM AV	W NORWOOD PL							LACFCD		
743		CPS	NE Corner W NORWOOD PL	S PALM AV							LACFCD		
744		CPS	NW Corner S RAYMOND AV	W NORWOOD PL							LACFCD		
745		CPS	NE Corner S RAYMOND AV	W NORWOOD PL							LACFCD		
746		CPS	NE Corner W NORWOOD PL	S RAYMOND AV							LACFCD		
747		CPS	NW Corner EDGEWOOD DR	W GLENDON WY							LACFCD		
748		CPS	NE Corner EDGEWOOD DR	W GLENDON WY							LACFCD		
749		CPS	NW Corner W GLENDON WY	EDGEWOOD DR							LACFCD		
750		CPS	SW Corner W GLENDON WY	EDGEWOOD DR							LACFCD		
751		CPS	NW Corner EDGEWOOD DR	W ROSS AV							LACFCD		
752		CPS	NE Corner EDGEWOOD DR	W ROSS AV							LACFCD		
753		CPS	NW Corner DATE AV	W ROSS AV							LACFCD		
754		CPS	NE Corner DATE AV	W ROSS AV							LACFCD		
755		CPS	NW Corner S PALM AV	W ROSS AV							LACFCD		
756		CPS	NE Corner S PALM AV	W ROSS AV							LACFCD		
757		CPS	NE Corner W ROSS AV	S PALM AV							LACFCD		
758		CPS	SE Corner W ROSS AV	S PALM AV							LACFCD		
759		CPS	NE Corner S MARENGO AV	W GLENDON WY							LACFCD		
760		ARS	NW Corner S MARENGO AV	W GLENDON WY							LACFCD		
761		ARS	SE Corner S MARENGO AV	W GLENDON WY							LACFCD		
762		CPS	SE Corner W RAMONA RD	S MARENGO AV							LACFCD		
763		ARS	NE Corner S MARENGO AV	W RAMONA RD							LACFCD		
764		CPS	NE Corner S CAMPBELL AV	S MARENGO AV							LACFCD		
765		ARS	NW Corner S CAMPBELL AV	W ROSS AV							LACFCD		
766		ARS	NW Corner W ROSS AV	S CAMPBELL AV							LACFCD		
767		CPS	NW Corner HATHAWAY AV	W EMERSON AV							LACFCD		
768		NONE	SW Corner MIDWICKHILL DR	S CURTIS AV							LACFCD		
769		NONE	NW Corner S CURTIS AV	MIDWICKHILL DR							LACFCD		
770		NONE	NE Corner S CURTIS AV	MIDWICKHILL DR							LACFCD		
771		CPS	SW Corner W HELLMAN AV	S CURTIS AV							LACFCD		
772		CPS	SW Corner W HELLMAN AV	S CURTIS AV							LACFCD		
773		CPS	NW Corner S MARENGO AV	W HELLMAN AV							LACFCD		
774		ARS	NE Corner S MARENGO AV	W HELLMAN AV							LACFCD		
775		CPS	SE Corner W HELLMAN AV	S MARENGO AV							LACFCD		
776		CPS	NW Corner W HELLMAN AV	S BUSHNELL AV							LACFCD		
777		ARS	NW Corner S BUSHNELL AV	W HELLMAN AV							LACFCD		
778		ARS	NE Corner S BUSHNELL AV	W HELLMAN AV							LACFCD		
779		CPS	NW Corner W HELLMAN AV	S CURTIS AV							LACFCD		
780		CPS	NW Corner W HELLMAN AV	S CURTIS AV							LACFCD		
781		CPS	NW Corner S CURTIS AV	W HELLMAN AV							LACFCD		
782		CPS	NE Corner S CURTIS AV	W HELLMAN AV							LACFCD		
783		CPS	NE Corner W HELLMAN AV	S CURTIS AV							LACFCD		
784		CPS	SE Corner W HELLMAN AV	S CURTIS AV							LACFCD		
785		NONE	NW Corner W HELLMAN AV	ORANGE GROVE AV							LACFCD		
786		NONE	SE Corner WESTMINISTER AV	CONCORD AV							LACFCD		
787		ARS	NE Corner GLENAVEN AV	WESTMONT DR							LACFCD		
788		CPS	NE Corner GLENAVEN AV	WESTMONT DR							LACFCD		
789		ARS	NW Corner WESTMONT DR	MIDWICK DR							LACFCD		
790		CPS	NE Corner WESTMONT DR	MIDWICK DR							LACFCD		

791		CPS	NE Corner MIDWICK DR	WESTMONT DR							LACFCD		
792		CPS	NE Corner MIDWICK DR	WESTMONT DR							LACFCD		
793		CPS	SE Corner WESTMONT DR	MIDWICK DR							LACFCD		
794		NONE	SE Corner ORANGE GROVE AV	W HELLMAN AV							LACFCD		
795		NONE	NE Corner LA GOLONDRINA AV	W ROSS AV							LACFCD		
796		NONE	NE Corner ELM ST	W ROSS AV							LACFCD		
797		CPS	NE Corner LAS FLORES ST	EL PASEO							LACFCD		
798		CPS	SE Corner LAS FLORES ST	EL PASEO							LACFCD		
799		CPS	SE Corner EL PASEO	LAS FLORES ST							LACFCD		
800		CPS	NW Corner EL PASEO	LAS FLORES ST							LACFCD		
801		CPS	NW Corner CARLOS ST	S FREMONT AV							LACFCD		
802		CPS	NE Corner CARLOS ST	S FREMONT AV							LACFCD		
803		CPS	SW Corner CARLOS ST	S FREMONT AV							LACFCD		
804		CPS	NW Corner S FREMONT AV	CARLOS ST							LACFCD		
805		CPS	SW Corner S FREMONT AV	CARLOS ST							LACFCD		
806		CPS	SW Corner S FREMONT AV	CARLOS ST							LACFCD		
807		CPS	SW Corner S GARVEY AV	CASUDA CANYON DR							LACFCD		
808		CPS	SE Corner S GARVEY AV	CARLOS AV							LACFCD		
809		CPS	NW Corner S GARVEY AV	CARLOS AV							LACFCD		
810		CPS	SW Corner MONTEZUMA AV	S GARVEY AV							LACFCD		
811		ARS	SW Corner MONTEZUMA AV	S GARVEY AV							LACFCD		
812		CPS	NE Corner S GARVEY AV	W RAMONA RD							LACFCD		
813		CPS	SE Corner S GARVEY AV	W RAMONA RD							LACFCD		
814		CPS	SE Corner WESTMINSTER AV	W RAMONA RD							LACFCD		
815		CPS	SE Corner WESTMINSTER AV	W RAMONA RD							LACFCD		
816		CPS	SE Corner WESTMINSTER AV	W RAMONA RD							LACFCD		
817		NONE	SE Corner W RAMONA RD	WESTMINSTER AV							LACFCD		
818		NONE	NE Corner S FREMONT AV	CARLOS ST							LACFCD		
819		CPS	SE Corner S FREMONT AV	SAN CLEMENTE AV							LACFCD		
820		CPS	NE Corner ALHAMBRA RD	MOUNT VERNON DR							LACFCD		
821		ARS	SW Corner E ALHAMBRA RD	ALHAMBRA RD							LACFCD		
822		CPS	NW Corner N CORDOVA ST	E ALHAMBRA RD							LACFCD		
823		CPS	NW Corner N CORDOVA ST	E ALHAMBRA RD							LACFCD		
824		ARS	NW Corner N HIDALGO AV	E ALHAMBRA RD							LACFCD		
825		CPS	NW Corner N HIDALGO AV	E ALHAMBRA RD							LACFCD		
826		CPS	NW Corner N HIDALGO AV	E ALHAMBRA RD							LACFCD		
827		ARS	NW Corner STORY PL	E ALHAMBRA RD							LACFCD		
828		CPS	NW Corner STORY PL	E ALHAMBRA RD							LACFCD		
829		CPS	NW Corner N ALMANSOR ST	E ALHAMBRA RD							LACFCD		
830		ARS	NW Corner N ALMANSOR ST	E ALHAMBRA RD							LACFCD		
831		CPS	NW Corner N ALMANSOR ST	E ALHAMBRA RD							LACFCD		
832		CPS	NW Corner NOVELDA RD	E ALHAMBRA RD							LACFCD		
833		CPS	SW Corner W ALHAMBRA RD	N ATLANTIC BLVD							LACFCD		
834		CPS	NW Corner W ALHAMBRA RD	N ATLANTIC BLVD							LACFCD		
835		CPS	NW Corner N ATLANTIC BLVD	W ALHAMBRA RD							LACFCD		
836		ARS	NE Corner N ATLANTIC BLVD	W ALHAMBRA RD							LACFCD		
837		CPS	SW Corner W ALHAMBRA RD	N 3RD ST							LACFCD		
838		CPS	NW Corner N 2ND ST	W ALHAMBRA RD							LACFCD		
839		CPS	NW Corner N 2ND ST	W ALHAMBRA RD							LACFCD		
840		CPS	NE Corner W ALHAMBRA RD	N 2ND ST							LACFCD		
841		CPS	NW Corner W ALHAMBRA RD	N GARFIELD AV							LACFCD		
842		CPS	NW Corner N GARFIELD AV	E ALHAMBRA RD							LACFCD		
843		CPS	NW Corner N GARFIELD AV	E ALHAMBRA RD							LACFCD		

844		CPS	NW Corner N STONEMAN AV	E ALHAMBRA RD							LACFCD		
845		CPS	NW Corner N STONEMAN AV	E ALHAMBRA RD							LACFCD		
846		CPS	NW Corner N MONTEREY ST	E ALHAMBRA RD							LACFCD		
847		NONE	NW Corner N 3RD ST	S 3RD ST							LACFCD		
848		CPS	NW Corner N 1ST ST	S 1ST ST							LACFCD		
849		CPS	NW Corner N 1ST ST	S 1ST ST							LACFCD		
850		NONE	NW Corner S 2ND ST	W COMMONWEALTH AV							LACFCD		
851		CPS	NE Corner W COMMONWEALTH AV	S 2ND ST							LACFCD		
852		CPS	NW Corner S 1ST ST	W COMMONWEALTH AV							LACFCD		
853		CPS	NE Corner S 1ST ST	W COMMONWEALTH AV							LACFCD		
854		CPS	NW Corner S GARFIELD AV	E COMMONWEALTH AV							LACFCD		
855		CPS	NE Corner S GARFIELD AV	E COMMONWEALTH AV							LACFCD		
856		CPS	SW Corner W MISSION RD	S 6TH ST							LACFCD		
857		CPS	SW Corner W MISSION RD	S 6TH ST							LACFCD		
858		ARS	NE Corner W MISSION RD	S 6TH ST							LACFCD		
859		CPS	NE Corner W MISSION RD	S 6TH ST							LACFCD		
860		CPS	NW Corner S 6TH ST	W MISSION RD							LACFCD		
861		CPS	NW Corner S 6TH ST	W MISSION RD							LACFCD		
862		CPS	NW Corner S 6TH ST	W MISSION RD							LACFCD		
863		CPS	SW Corner E COMMONWEALTH AV	S CHAPEL AV							LACFCD		
864		CPS	SW Corner E COMMONWEALTH AV	S CHAPEL AV							LACFCD		
865		ARS	NW Corner N CHAPEL AV	E COMMONWEALTH AV							LACFCD		
866		CPS	NE Corner N CHAPEL AV	E COMMONWEALTH AV							LACFCD		
867		CPS	SW Corner E BAY STATE ST	S CHAPEL AV							LACFCD		
868		CPS	SW Corner E BAY STATE ST	S CHAPEL AV							LACFCD		
869		CPS	NW Corner N CHAPEL AV	E BAY STATE ST							LACFCD		
870		CPS	NW Corner S ALMANSOR ST	E MISSION RD							LACFCD		
871		CPS	NW Corner S ALMANSOR ST	E MISSION RD							LACFCD		
872		CPS	NW Corner S HIDALGO AV	E MISSION RD							LACFCD		
873		CPS	NW Corner S HIDALGO AV	E MISSION RD							LACFCD		
874		CPS	SW Corner E MISSION RD	S CORDOVA ST							LACFCD		
875		CPS	NW Corner S CORDOVA ST	E MISSION RD							LACFCD		
876		CPS	NW Corner S CORDOVA ST	E MISSION RD							LACFCD		
877		CPS	NE Corner ALHAMBRA RD	MOUNT VERNON DR							LACFCD		
878		CPS	NE Corner ALHAMBRA RD	ALAHMAR ST							LACFCD		
879		CPS	NE Corner ALHAMBRA RD	ALAHMAR ST							LACFCD		
880		CPS	SW Corner VIOLETA DR	S VEGA ST							LACFCD		
881		CPS	NW Corner VIOLETA DR	S VEGA ST							LACFCD		
882		CPS	NW Corner E NORWOOD PL	GERANIO DR							LACFCD		
883		CPS	SE Corner CAMELIA DR	MARKET LN							LACFCD		
884		CPS	NE Corner MARKET LN	CAMELIA DR							LACFCD		
885		CPS	NE Corner CAMELIA DR	MARKET LN							LACFCD		
886		CPS	NW Corner E VALLEY BLVD	S GRANADA AV							LACFCD		
887		CPS	NW Corner S GRANADA AV	E VALLEY BLVD							LACFCD		
888		CPS	NE Corner S GRANADA AV	E VALLEY BLVD							LACFCD		
889		CPS	NW Corner E VALLEY BLVD	S VEGA ST							LACFCD		
890		CPS	NW Corner E VALLEY BLVD	NEW AV							LACFCD		
891		CPS	NW Corner E VALLEY BLVD	NEW AV							LACFCD		
892		CPS	SW Corner E SHORB ST	NEW AV							LACFCD		
893		CPS	SW Corner E SHORB ST	NEW AV							LACFCD		
894		ARS	NW Corner E SHORB ST	NEW AV							LACFCD		
895		CPS	SE Corner S VEGA ST	E SHORB ST							LACFCD		
896		CPS	SW Corner S VEGA ST	E SHORB ST							LACFCD		

897		CPS	SW Corner E SHORB ST	S VEGA ST							LACFCD		
898		CPS	SW Corner S GRANADA AV	E SHORB ST							LACFCD		
899		ARS	SW Corner E SHORB ST	S GRANADA AV							LACFCD		
900		CPS	NE Corner S VEGA ST	E SHORB ST							LACFCD		
901		CPS	NW Corner S VEGA ST	E SHORB ST							LACFCD		
902		CPS	NW Corner E SHORB ST	S VEGA ST							LACFCD		
903		CPS	NE Corner S EL MOLINO ST	E SHORB ST							LACFCD		
904		CPS	NW Corner S EL MOLINO ST	E SHORB ST							LACFCD		
905		CPS	NW Corner E SHORB ST	S EL MOLINO ST							LACFCD		
906		CPS	NE Corner S VALENCIA ST	E SHORB ST							LACFCD		
907		ARS	NW Corner S VALENCIA ST	E SHORB ST							LACFCD		
908		CPS	NW Corner E SHORB ST	S VALENCIA ST							LACFCD		
909		CPS	NE Corner S GRANADA AV	E SHORB ST							LACFCD		
910		ARS	NW Corner S GRANADA AV	E SHORB ST							LACFCD		
911		CPS	NW Corner E SHORB ST	S GRANADA AV							LACFCD		
912		CPS	NE Corner S CORDOVA ST	E SHORB ST							LACFCD		
913		CPS	NW Corner S CORDOVA ST	E SHORB ST							LACFCD		
914		CPS	NE Corner S HIDALGO AV	E SHORB ST							LACFCD		
915		ARS	NW Corner S HIDALGO AV	E SHORB ST							LACFCD		
916		ARS	NE Corner S ALMANSOR ST	E SHORB ST							LACFCD		
917		ARS	NW Corner S ALMANSOR ST	E SHORB ST							LACFCD		
918		CPS	NE Corner S SIERRA VISTA AV	E SHORB ST							LACFCD		
919		ARS	NW Corner S SIERRA VISTA AV	E SHORB ST							LACFCD		
920		CPS	NW Corner E SHORB ST	S SIERRA VISTA AV							LACFCD		
921		CPS	SW Corner E SHORB ST	S SIERRA VISTA AV							LACFCD		
922		CPS	SW Corner S SIERRA VISTA AV	E SHORB ST							LACFCD		
923		CPS	SE Corner S SIERRA VISTA AV	E SHORB ST							LACFCD		
924		ARS	NW Corner E SHORB ST	S ALMANSOR ST							LACFCD		
925		ARS	SW Corner E SHORB ST	S ALMANSOR ST							LACFCD		
926		ARS	SE Corner S ALMANSOR ST	E SHORB ST							LACFCD		
927		CPS	NW Corner E SHORB ST	S HIDALGO AV							LACFCD		
928		CPS	NW Corner E SHORB ST	S CORDOVA ST							LACFCD		
929		CPS	SW Corner E SAN MARINO AV	S SIERRA VISTA AV							LACFCD		
930		ARS	SE Corner S SIERRA VISTA AV	E SAN MARINO AV							LACFCD		
931		CPS	NW Corner E SAN MARINO AV	S SIERRA VISTA AV							LACFCD		
932		CPS	SW Corner S SIERRA VISTA AV	E ADAMS AV							LACFCD		
933		ARS	SW Corner E ADAMS AV	S SIERRA VISTA AV							LACFCD		
934		ARS	NW Corner E ADAMS AV	S SIERRA VISTA AV							LACFCD		
935		NONE	NW Corner S SIERRA VISTA AV	E ADAMS AV							LACFCD		
936		CPS	NE Corner S SIERRA VISTA AV	E ADAMS AV							LACFCD		
937		NONE	NE Corner S SIERRA VISTA AV	E ADAMS AV							LACFCD		
938		CPS	NW Corner S ALMANSOR ST	E ADAMS AV							LACFCD		
939		ARS	NE Corner S ALMANSOR ST	E ADAMS AV							LACFCD		
940		ARS	NE Corner S ALMANSOR ST	E ADAMS AV							LACFCD		
941		CPS	NE Corner E ADAMS AV	S HIDALGO AV							LACFCD		
942		CPS	SW Corner E ADAMS AV	S CORDOVA ST							LACFCD		
943		CPS	NW Corner E ADAMS AV	S GRANADA AV							LACFCD		
944		CPS	SW Corner E ADAMS AV	S VALENCIA ST							LACFCD		
945		CPS	NW Corner E ADAMS AV	S VALENCIA ST							LACFCD		
946		CPS	SW Corner E ADAMS AV	S VEGA ST							LACFCD		
947		ARS	NE Corner E ADAMS AV	S VEGA ST							LACFCD		
948		CPS	SW Corner E ADAMS AV	GERANIO DR							LACFCD		
949		CPS	NE Corner E ADAMS AV	AZALEA DR							LACFCD		

950		CPS	NW Corner E ADAMS AV	GERANIO DR							LACFCD		
951		CPS	SW Corner E ADAMS AV	NEW AV							LACFCD		
952		CPS	NW Corner E ADAMS AV	NEW AV							LACFCD		
953		CPS	NE Corner S CHAPEL AV	E LOS HIGOS ST							LACFCD		
954		CPS	NW Corner S CHAPEL AV	E LOS HIGOS ST							LACFCD		
955		CPS	NW Corner E LOS HIGOS ST	S CHAPEL AV							LACFCD		
956		CPS	SW Corner E LOS HIGOS ST	S CHAPEL AV							LACFCD		
957		ARS	NE Corner S CHAPEL AV	E LINDA VISTA AV							LACFCD		
958		ARS	NW Corner S CHAPEL AV	E LINDA VISTA AV							LACFCD		
959		CPS	NW Corner E LINDA VISTA AV	S CHAPEL AV							LACFCD		
960		ARS	SW Corner E LINDA VISTA AV	S CHAPEL AV							LACFCD		
961		ARS	NE Corner S CHAPEL AV	E ADAMS AV							LACFCD		
962		ARS	NW Corner S CHAPEL AV	E ADAMS AV							LACFCD		
963		CPS	NW Corner E ADAMS AV	S CHAPEL AV							LACFCD		
964		CPS	SW Corner E ADAMS AV	S CHAPEL AV							LACFCD		
965		ARS	NE Corner S CHAPEL AV	E SAN MARINO AV							LACFCD		
966		ARS	NW Corner S CHAPEL AV	E SAN MARINO AV							LACFCD		
967		CPS	NW Corner E SAN MARINO AV	S CHAPEL AV							LACFCD		
968		CPS	SW Corner E SAN MARINO AV	S CHAPEL AV							LACFCD		
969		CPS	SW Corner S CHAPEL AV	E SAN MARINO AV							LACFCD		
970		CPS	SE Corner S CHAPEL AV	E SAN MARINO AV							LACFCD		
971		ARS	SE Corner S MONTEREY ST	E SAN MARINO AV							LACFCD		
972		ARS	SW Corner S MONTEREY ST	E SAN MARINO AV							LACFCD		
973		CPS	SW Corner E SAN MARINO AV	S MONTEREY ST							LACFCD		
974		CPS	NE Corner S STONEMAN AV	E SAN MARINO AV							LACFCD		
975		CPS	NW Corner S STONEMAN AV	E SAN MARINO AV							LACFCD		
976		ARS	NW Corner S SAN MARINO AV	S STONEMAN AV							LACFCD		
977		CPS	NE Corner S GARFIELD AV	E SAN MARINO AV							LACFCD		
978		CPS	NE Corner S GARFIELD AV	E SAN MARINO AV							LACFCD		
979		CPS	NW Corner S GARFIELD AV	E SAN MARINO AV							LACFCD		
980		CPS	NE Corner W SAN MARINO AV	S 1ST ST							LACFCD		
981		CPS	NE Corner S 1ST ST	W SAN MARINO AV							LACFCD		
982		CPS	NW Corner S 1ST ST	W SAN MARINO AV							LACFCD		
983		CPS	SE Corner W SAN MARINO AV	S 2ND ST							LACFCD		
984		CPS	NW Corner W SAN MARINO AV	S 2ND ST							LACFCD		
985		CPS	NE Corner S 2ND ST	W SAN MARINO AV							LACFCD		
986		CPS	NW Corner S 2ND ST	W SAN MARINO AV							LACFCD		
987		CPS	SE Corner W SAN MARINO AV	S 3RD ST							LACFCD		
988		CPS	SE Corner W SAN MARINO AV	S 4TH ST							LACFCD		
989		CPS	SE Corner W SAN MARINO AV	S 4TH ST							LACFCD		
990		CPS	NE Corner W SAN MARINO AV	S 4TH ST							LACFCD		
991		CPS	NE Corner S 4TH ST	W SAN MARINO AV							LACFCD		
992		CPS	NW Corner S 4TH ST	W SAN MARINO AV							LACFCD		
993		CPS	NW Corner W SAN MARINO AV	S 4TH ST							LACFCD		
994		CPS	SW Corner W SAN MARINO AV	S 4TH ST							LACFCD		
995		CPS	NW Corner W ADAMS AV	S 4TH ST							LACFCD		
996		CPS	NW Corner S 4TH ST	W ADAMS AV							LACFCD		
997		CPS	NE Corner S 4TH ST	W ADAMS AV							LACFCD		
998		CPS	NE Corner W ADAMS AV	S 4TH ST							LACFCD		
999		CPS	NE Corner W LINDA VISTA AV	S 4TH ST							LACFCD		
1000		CPS	NE Corner S 4TH ST	W LINDA VISTA AV							LACFCD		
1001		CPS	NW Corner S 4TH ST	W LINDA VISTA AV							LACFCD		
1002		CPS	NW Corner S 4TH ST	W LINDA VISTA AV							LACFCD		

1003		CPS	NW Corner W LINDA VISTA AV	S 4TH ST							LACFCD		
1004		CPS	SW Corner W SAN MARINO AV	S 5TH ST							LACFCD		
1005		CPS	NE Corner S 6TH ST	W SAN MARINO AV							LACFCD		
1006		CPS	NW Corner S 6TH ST	W SAN MARINO AV							LACFCD		
1007		CPS	NW Corner W SAN MARINO AV	S 6TH ST							LACFCD		
1008		CPS	SW Corner W SAN MARINO AV	S 6TH ST							LACFCD		
1009		CPS	NE Corner S 7TH ST	W SAN MARINO AV							LACFCD		
1010		CPS	NW Corner S 7TH ST	W SAN MARINO AV							LACFCD		
1011		CPS	NW Corner W SAN MARINO AV	S 7TH ST							LACFCD		
1012		CPS	NE Corner S 8TH ST	W SAN MARINO AV							LACFCD		
1013		CPS	NW Corner S 8TH ST	W SAN MARINO AV							LACFCD		
1014		CPS	NW Corner W SAN MARINO AV	S 8TH ST							LACFCD		
1015		CPS	SW Corner W SAN MARINO AV	S 8TH ST							LACFCD		
1016		CPS	NE Corner S 9TH ST	W SAN MARINO AV							LACFCD		
1017		CPS	NW Corner S 9TH ST	W SAN MARINO AV							LACFCD		
1018		CPS	NW Corner W SAN MARINO AV	S 9TH ST							LACFCD		
1019		CPS	SW Corner W SAN MARINO AV	S 9TH ST							LACFCD		
1020		CPS	SW Corner W MISSION RD	S 8TH ST							LACFCD		
1021		CPS	SW Corner W MISSION RD	S 8TH ST							LACFCD		
1022		CPS	NW Corner S 8TH ST	W MISSION RD							LACFCD		
1023		CPS	NW Corner S 8TH ST	W MISSION RD							LACFCD		
1024		CPS	NE Corner W MISSION RD	S 8TH ST							LACFCD		
1025		CPS	NE Corner S 6TH ST	W ADAMS AV							LACFCD		
1026		CPS	NE Corner W LINDA VISTA AV	S 6TH ST							LACFCD		
1027		CPS	NE Corner S 6TH ST	W LINDA VISTA AV							LACFCD		
1028		CPS	NW Corner S 6TH ST	W LINDA VISTA AV							LACFCD		
1029		CPS	NW Corner S 8TH ST	W VALLEY BLVD							LACFCD		
1030		CPS	NE Corner S 8TH ST	W VALLEY BLVD							LACFCD		
1031		CPS	NW Corner S 7TH ST	W VALLEY BLVD							LACFCD		
1032		CPS	NE Corner S 7TH ST	W VALLEY BLVD							LACFCD		
1033		CPS	NW Corner S 6TH ST	W VALLEY BLVD							LACFCD		
1034		CPS	NE Corner S 6TH ST	W VALLEY BLVD							LACFCD		
1035		CPS	NW Corner ALLEY EAST OF S 6TH ST	ALLEY NORTH OF W VALLEY BLVD							LACFCD		
1036		CPS	NW Corner S 5TH ST	W VALLEY BLVD							LACFCD		
1037		CPS	NE Corner S 5TH ST	W VALLEY BLVD							LACFCD		
1038		NONE	NE Corner ALLEY EAST OF S 5TH ST	ALLEY NORTH OF W VALLEY BLVD							LACFCD		
1039		CPS	NW Corner S 4TH ST	W VALLEY BLVD							LACFCD		
1040		CPS	NE Corner S 4TH ST	W VALLEY BLVD							LACFCD		
1041		CPS	NE Corner ALLEY EAST OF S 4TH ST	ALLEY NORTH OF W VALLEY BLVD							LACFCD		
1042		CPS	NW Corner S 3RD ST	W VALLEY BLVD							LACFCD		
1043		CPS	NE Corner S 3RD ST	W VALLEY BLVD							LACFCD		
1044		CPS	NW Corner ALLEY WEST OF S 2ND ST	ALLEY NORTH OF W VALLEY BLVD							LACFCD		
1045		CPS	NW Corner S 2ND ST	W VALLEY BLVD							LACFCD		
1046		CPS	NE Corner S 2ND ST	W VALLEY BLVD							LACFCD		
1047		CPS	NE Corner S 2ND ST	W VALLEY BLVD							LACFCD		
1048		CPS	NE Corner W VALLEY BLVD	S 2ND ST							LACFCD		
1049		CPS	SE Corner W VALLEY BLVD	S 2ND ST							LACFCD		
1050		CPS	NW Corner W VALLEY BLVD	S 2ND ST							LACFCD		
1051		CPS	SW Corner W VALLEY BLVD	S 2ND ST							LACFCD		
1052		CPS	NE Corner S CHAPEL AV	E NORWOOD PL							LACFCD		
1053		CPS	NE Corner E NORWOOD PL	S CHAPEL AV							LACFCD		
1054		ARS	NW Corner S CHAPEL AV	E NORWOOD PL							LACFCD		
1055		CPS	NW Corner E NORWOOD PL	S CHAPEL AV							LACFCD		

1056		CPS	SW Corner E NORWOOD PL	S CHAPEL AV							LACFCD		
1057		CPS	SE Corner S MONTEREY ST	E NORWOOD PL							LACFCD		
1058		ARS	SW Corner S MONTEREY ST	E NORWOOD PL							LACFCD		
1059		CPS	SW Corner E NORWOOD PL	S MONTEREY ST							LACFCD		
1060		CPS	NW Corner E NORWOOD PL	S MONTEREY ST							LACFCD		
1061		ARS	NW Corner S MONTEREY ST	E NORWOOD PL							LACFCD		
1062		CPS	NE Corner W NORWOOD PL	S 2ND ST							LACFCD		
1063		CPS	NE Corner S 2ND ST	W NORWOOD PL							LACFCD		
1064		CPS	NW Corner S 2ND ST	W NORWOOD PL							LACFCD		
1065		CPS	NW Corner W NORWOOD PL	S 2ND ST							LACFCD		
1066		CPS	NE Corner S CHAPEL AV	E GLENDON WY							LACFCD		
1067		CPS	NW Corner S CHAPEL AV	E GLENDON WY							LACFCD		
1068		CPS	NE Corner S 2ND ST	W GLENDON WY							LACFCD		
1069		CPS	NW Corner S 2ND ST	W GLENDON WY							LACFCD		
1070		CPS	NW Corner W GLENDON WY	S 2ND ST							LACFCD		
1071		CPS	SW Corner W GLENDON WY	S 2ND ST							LACFCD		
1072		CPS	NW Corner S 2ND ST	W RAMONA RD							LACFCD		
1073		CPS	NE Corner S 2ND ST	W RAMONA RD							LACFCD		
1074		CPS	NE Corner S 3RD ST	W GLENDON WY							LACFCD		
1075		CPS	NW Corner S 3RD ST	W GLENDON WY							LACFCD		
1076		CPS	NW Corner W GLENDON WY	S 3RD ST							LACFCD		
1077		CPS	NE Corner S 4TH ST	W GLENDON WY							LACFCD		
1078		CPS	NW Corner S 4TH ST	W GLENDON WY							LACFCD		
1079		CPS	NW Corner W GLENDON WY	S 4TH ST							LACFCD		
1080		CPS	NE Corner S 5TH ST	W GLENDON WY							LACFCD		
1081		CPS	NW Corner S 5TH ST	W GLENDON WY							LACFCD		
1082		CPS	NW Corner W GLENDON WY	S 5TH ST							LACFCD		
1083		CPS	NW Corner S 9TH ST	W GLENDON WY							LACFCD		
1084		CPS	NE Corner S 9TH ST	W GLENDON WY							LACFCD		
1085		CPS	NW Corner W GLENDON WY	S 8TH ST							LACFCD		
1086		CPS	NW Corner S 8TH ST	W GLENDON WY							LACFCD		
1087		CPS	NE Corner S 8TH ST	W GLENDON WY							LACFCD		
1088		CPS	NW Corner W GLENDON WY	S 7TH ST							LACFCD		
1089		CPS	NW Corner S 7TH ST	W GLENDON WY							LACFCD		
1090		ARS	NE Corner S 7TH ST	W GLENDON WY							LACFCD		
1091		CPS	NW Corner W GLENDON WY	S 6TH ST							LACFCD		
1092		ARS	NW Corner S 6TH ST	W GLENDON WY							LACFCD		
1093		CPS	NE Corner S 6TH ST	W GLENDON WY							LACFCD		
1094		CPS	NW Corner W HELLMAN AV	S 6TH ST							LACFCD		
1095		CPS	NW Corner S 6TH ST	N YNEZ AV							LACFCD		
1096		CPS	SW Corner S 6TH ST	N YNEZ AV							LACFCD		
1097		CPS	NW Corner W HELLMAN AV	N BALTIMORE AV							LACFCD		
1098		CPS	NW Corner S 2ND ST	HELLMAN AV							LACFCD		
1099		CPS	NE Corner S 2ND ST	HELLMAN AV							LACFCD		
1100		CPS	NE Corner W HELLMAN AV	S 2ND ST							LACFCD		
1101		CPS	NE Corner W HELLMAN AV	N GARFIELD AV							LACFCD		
1102		CPS	SE Corner E HELLMAN AV	N GARFIELD AV							LACFCD		
1103		CPS	NE Corner GERANIO DR	E GLENDON WY							LACFCD		
1104		CPS	SW Corner E GLENDON WY	GLENDON WY							LACFCD		
1105		CPS	NE Corner E GLENDON WY	AZALEA DR							LACFCD		
1106		CPS	NE Corner AZALEA DR	E GLENDON WY							LACFCD		
1107		CPS	NE Corner AZALEA DR	E ROSS AV							LACFCD		
1108		CPS	NE Corner S VEGA ST	E GLENDON WY							LACFCD		

1109		CPS	NE Corner S VEGA ST	E ROSS AV							LACFCD		
1110		CPS	NE Corner E GLENDON WY	S EL MOLINO ST							LACFCD		
1111		CPS	NE Corner S EL MOLINO ST	E GLENDON WY							LACFCD		
1112		CPS	NW Corner E ROSS AV	S VEGA ST							LACFCD		
1113		CPS	NW Corner E ROSS AV	S VEGA ST							LACFCD		
1114		CPS	SW Corner E ROSS AV	S VEGA ST							LACFCD		
1115		CPS	SW Corner E ROSS AV	S VEGA ST							LACFCD		
1116		ARS	NW Corner E NORWOOD PL	S VEGA ST							LACFCD		
1117		CPS	SW Corner E NORWOOD PL	S VEGA ST							LACFCD		
1118		CPS	SW Corner E GLENDON WY	S SIERRA VISTA AV							LACFCD		
1119		CPS	NW Corner E GLENDON WY	S SIERRA VISTA AV							LACFCD		
1120		CPS	NW Corner S SIERRA VISTA AV	E GLENDON WY							LACFCD		
1121		CPS	NE Corner S SIERRA VISTA AV	E GLENDON WY							LACFCD		
1122		CPS	NE Corner S HIDALGO AV	E GLENDON WY							LACFCD		
1123		CPS	NE Corner E GLENDON WY	S HIDALGO AV							LACFCD		
1124		CPS	SE Corner E GLENDON WY	S HIDALGO AV							LACFCD		
1125		CPS	SE Corner S HIDALGO AV	E GLENDON WY							LACFCD		
1126		CPS	NE Corner S CORDOVA ST	E GLENDON WY							LACFCD		
1127		CPS	NE Corner E GLENDON WY	S CORDOVA ST							LACFCD		
1128		CPS	SE Corner E GLENDON WY	S CORDOVA ST							LACFCD		
1129		CPS	SE Corner S CORDOVA ST	E GLENDON WY							LACFCD		
1130		CPS	SW Corner E GLENDON WY	S GRANADA AV							LACFCD		
1131		CPS	NE Corner E GLENDON WY	S GRANADA AV							LACFCD		
1132		CPS	NE Corner E GLENDON WY	S VALENCIA ST							LACFCD		
1133		CPS	NE Corner S 6TH ST	W HELLMAN AV							LACFCD		
1134		ARS	NE Corner S MONTEREY ST	E NORWOOD PL							LACFCD		
1135		CPS	SW Corner S CHAPEL AV	E SHORB ST							LACFCD		
1136		CPS	SE Corner S CHAPEL AV	E SHORB ST							LACFCD		
1137		ARS	SW Corner E SHORB ST	S CHAPEL AV							LACFCD		

970 CPS	
92 ARS	
41 NONE	
34 N/A	(These drain to CPS devices)