

# US Army Corps of Engineers®

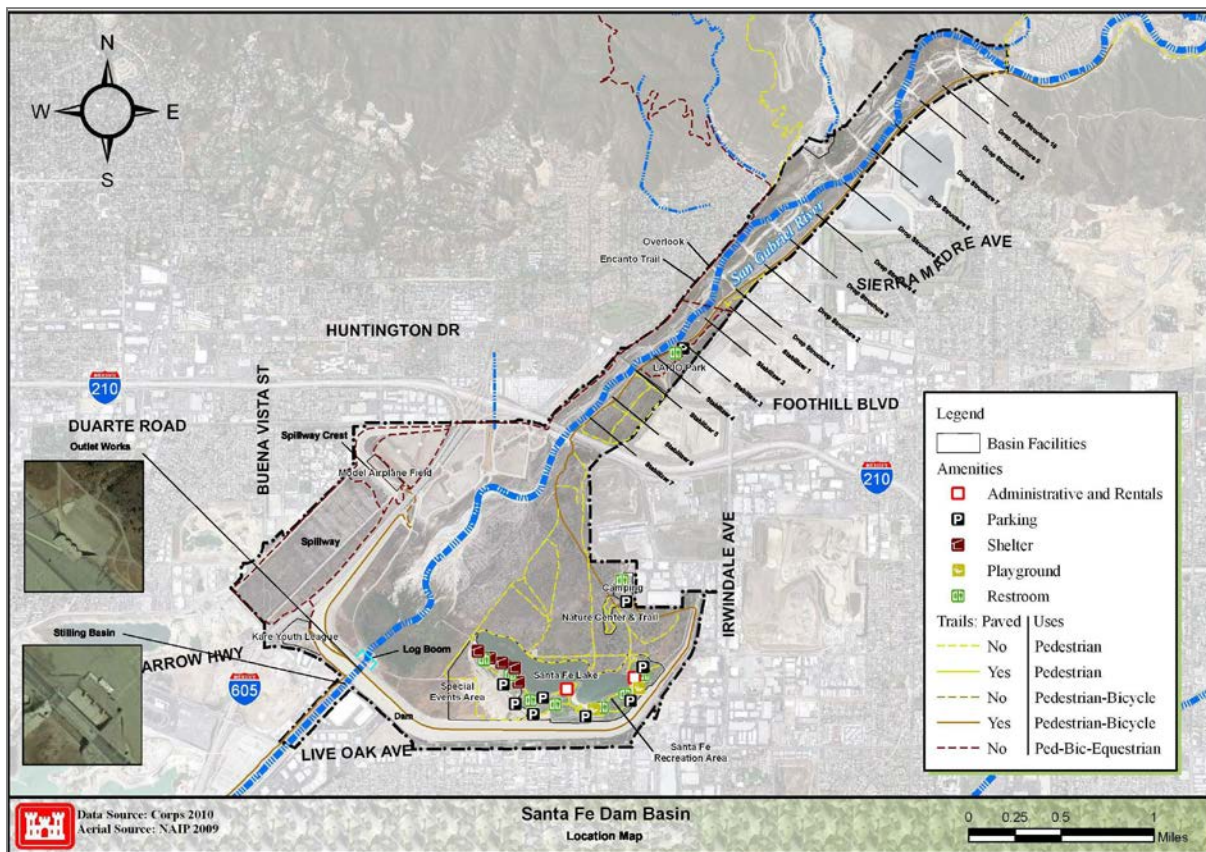
LOS ANGELES DISTRICT

Operations Division  
915 Wilshire Blvd, 11<sup>th</sup> Floor  
Los Angeles, CA. 90017

**NOTIFICATION:** Pursuant to Section II.C.2.b of the May 12, 2017, Memorandum of Understanding (MOU) Between the United States Army Corps of Engineers, Los Angeles District (USACE) and the California Regional Water Quality Control Board, Los Angeles Region (LARWQCB), concerning Operation, Maintenance, Repair, Replacement, and Rehabilitation (OMRR&R) of the Los Angeles County Drainage Area (LACDA) Project in Waters of the United States.

**SUBJECT:** Annual sediment, debris, and vegetation removal from inlet and outlet concrete apron at Santa Fe Dam.

**PROJECT LOCATION:** Santa Fe Dam – Irwindale, California.



CESPL-AM-OM

SUBJECT: Notification of Annual sediment, debris, and vegetation removal from inlet and outlet concrete apron at Santa Fe Dam, City of Irwindale

**JUSTIFICATION:** Clearing of accumulated sediment, debris, and vegetation is required prior to the rainy season each year to prevent clogging of the outlet works during storms. Clogged inlet gates could block storm flows from passing through the outlet works and downstream channel which can result in flooding.

**PROPOSED SCHEDULE:** June 25, 2018 through August 30, 2018. Activities identified in this notification the sooner of (1) 45 days of receipt of this notification or (2) LARWQCB concurs that routine maintenance activities may proceed.

**ACTIVITIES DESCRIPTION:** Removal of sediment, debris, and vegetation from inlet and outlet concrete flip bucket areas shall occur by clean excavation using mechanized equipment, such as a wheeled loader, backhoe, and dump truck. This material would then be hauled to an approved downstream uplands disposal site. No stream diversion or dewatering is proposed. No staging or stockpiling would occur within the channel.

In addition to our annual maintenance requirements, follow on maintenance of these areas may be necessary during the flood season (November 15<sup>th</sup> through April 15<sup>th</sup>) if large amounts of sediment, debris, or vegetation is deposited that can cause the outlet works to be clogged during a storm event. If additional clean ups become necessary, the Corps will notify the LARWQCB via email.

Santa Fe (upstream)



CESPL-AM-OM

SUBJECT: Notification of Annual sediment, debris, and vegetation removal from inlet and outlet concrete apron at Santa Fe Dam, City of Irwindale

Santa Fe (downstream flip bucket)



**Best Management Practices (BMPs) to be implemented to Avoid and/or Minimize Impacts to Jurisdictional Waters of the United States:** The first nine of the recommended BMP's listed under Exhibit B of Attachment A – MOU between the USACE and LARWQCB concerning OMRR&R of the LACDA Project in waters of the U.S. will be used for this maintenance activity.

**APPROVED BY:**

Date: May 10, 2018

\_\_\_\_\_  
Lillian Doherty  
Operations Division  
Los Angeles District, U.S. Army Corps of Engineers