




















Map Grid Index

LEGEND:

-  Groundwater monitoring well
-  Agricultural supply well
-  Domestic supply well
-  Other supply well
-  Groundwater extraction well (active)
-  Multiuse test well, or inactive extraction/injection well
-  Freshwater injection well
-  PG&E-owned property
-  PG&E Compressor Station
-  County parcels
-  Transmission lines
-  Approximate limit of saturated alluvium upper aquifer (Dashed where inferred)
-  Approximate location of Lockhart Fault; fault trace is inferred, and there is no surface expression (Stamos et al., 2001)
-  Bedrock exposed at ground surface
-  See Footnote 3.
-  Approximate outline of Cr(VI) or Cr(T) in Upper Aquifer exceeding values of 3.1 and 3.2 µg/L, respectively, Third Quarter 2015
-  Approximate 10 µg/L outline of Cr(VI) or Cr(T) concentrations in Upper Aquifer, Third Quarter 2015
-  Approximate 50 µg/L outline of Cr(T) concentrations in Upper Aquifer, Third Quarter 2015
-  Approximate 1,000 µg/L outline of Cr(VI) or Cr(T) concentrations in Upper Aquifer, Third Quarter 2015

MW-77S Well ID

0.92/ND Cr(VI)/Cr(T) concentrations in µg/L; maximum of primary and duplicate samples during Third Quarter 2015 sampling.

ABBREVIATIONS:

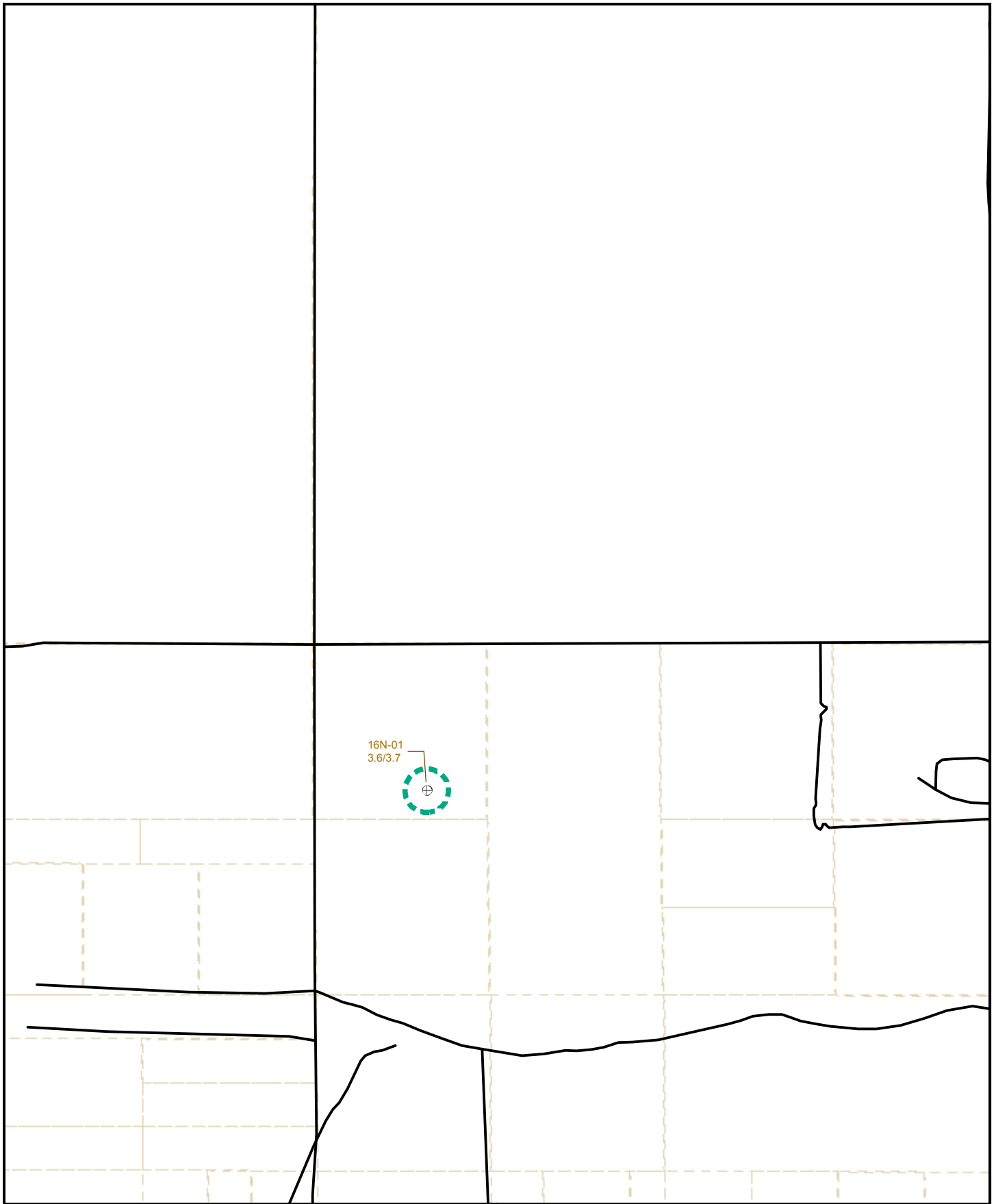
- µg/L micrograms per liter
- Cr(VI) hexavalent chromium
- Cr(T) total dissolved chromium
- IRZ In Situ Reactive Zone
- ND not detected
- NS not sampled

Groundwater Cr(VI) concentrations in monitoring wells:

-  More than 1,000 µg/L
-  10 to 50 µg/L
-  100 to 1,000 µg/L
-  3.1 to 10 µg/L
-  50 to 100 µg/L
-  Less than 3.1 µg/L or ND

NOTES:

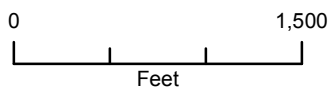
1. Chromium results are shown for site-wide Groundwater Monitoring Program and domestic wells sampled in the Third Quarter (July through September) 2015 monitoring period. For wells sampled multiple times during the reporting period, the most recent results are shown.
2. The concentration contours are based on Third Quarter 2015 chromium results for the groundwater monitoring and extraction wells that are completed in the shallow zone and deep zone of the Upper Aquifer as noted on Figures 5-1 and 5-2. Results for domestic wells (brown-colored labels) were not used for chromium plume contouring except for those located north of Grasshopper Road, pursuant to the Lahontan Regional Water Quality Control Board's Letter Conditional Acceptance of Northern Areas Investigation Proposal dated February 26, 2014.
3. Pursuant to the Lahontan Regional Water Quality Control Board's letter *Review of Chromium Plume Maps, Third Quarter 2013 Groundwater Monitoring Report and Agreement with Northern Investigation Concept* dated December 12, 2013, groundwater monitoring wells are not used for chromium contouring if they are located in the areas southwest of the Lockhart Fault and on or east of Dixie Road.
4. Chromium plume contouring for concentrations of 10, 50 and 1000 µg/L are completed using the more robust dataset presented in the July 15, 2015 Second Quarter 2015 Monitoring Report for the In Situ Reactive Zone and Northwest Freshwater Injection Projects and represent a composite of the shallow and deep zone contours presented therein. Select wells from that program are shown here for reference.



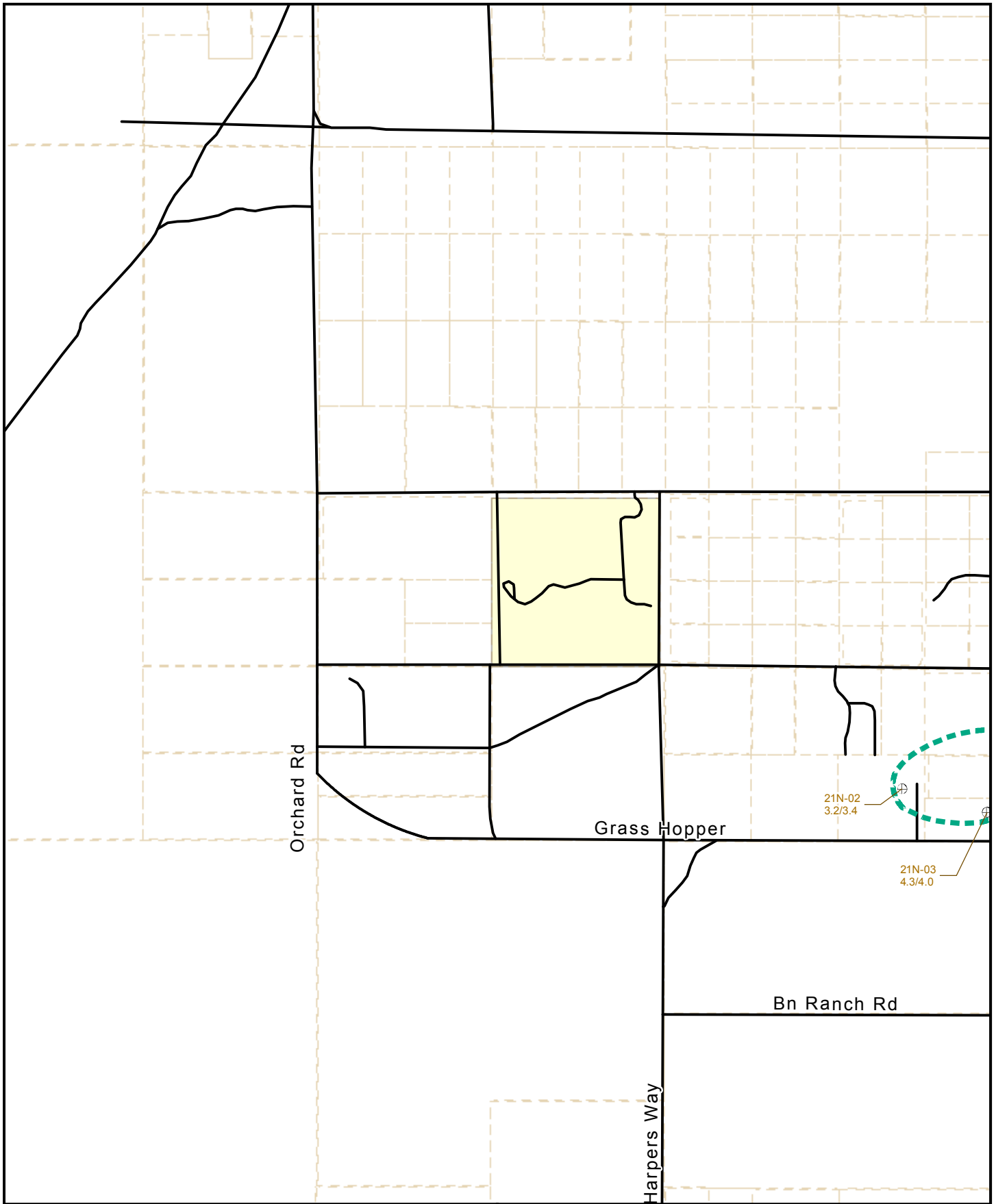
16N-01
3.6/3.7



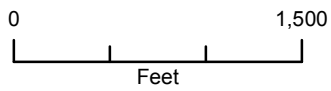
**See Legend Figure for
Feature Descriptions**



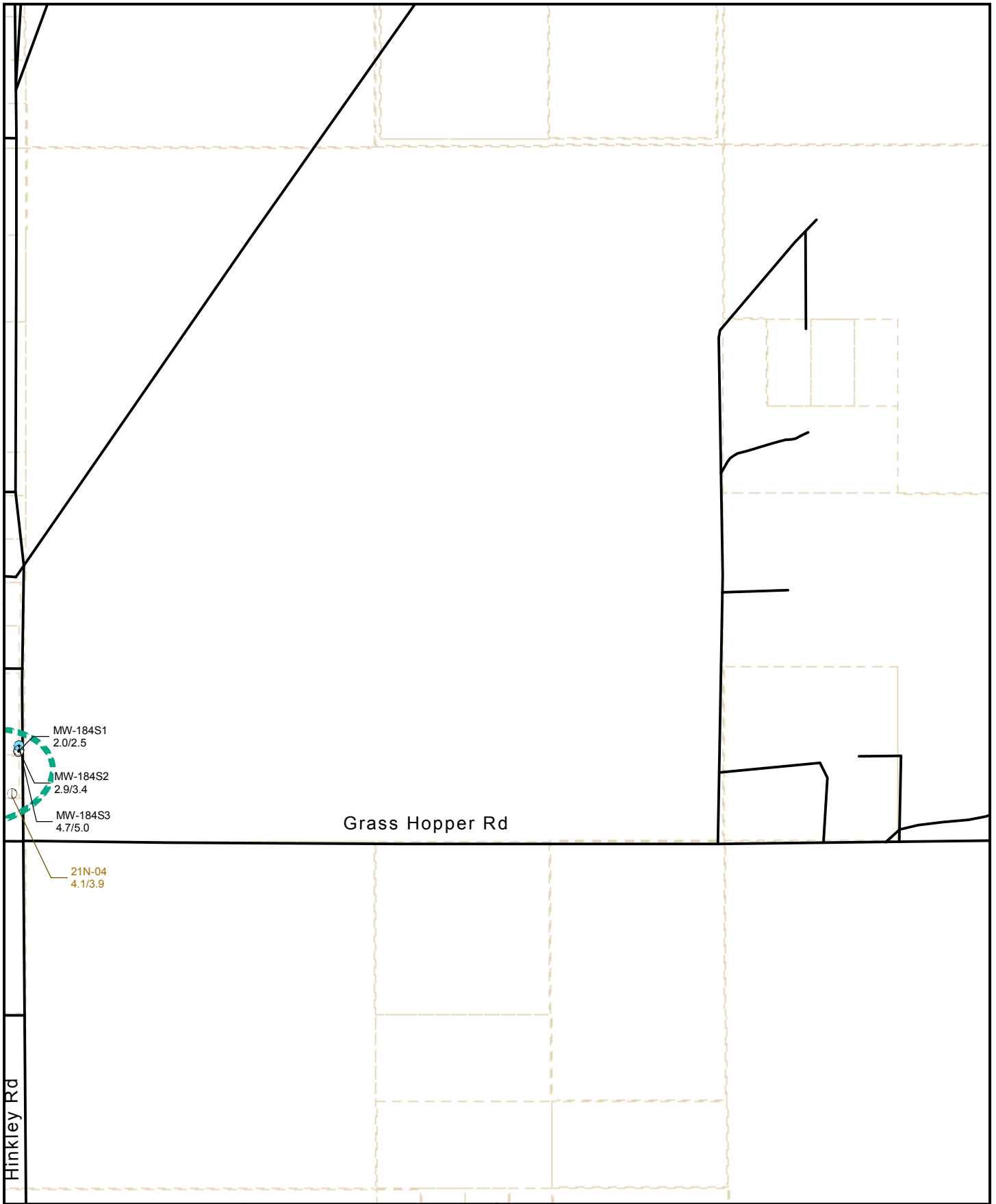
MAP 01



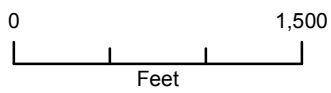
See Legend Figure for
Feature Descriptions



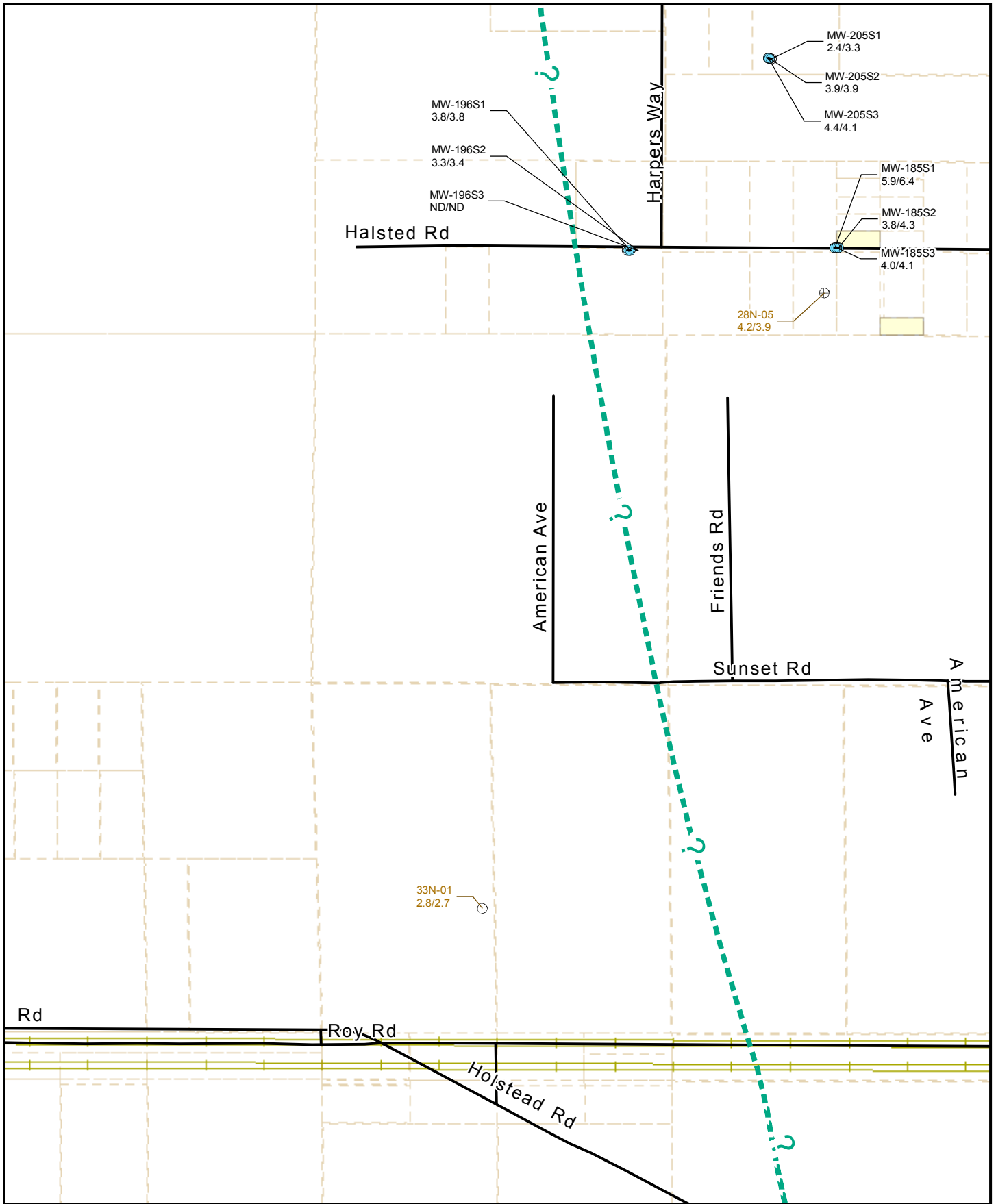
MAP 02



See Legend Figure for
Feature Descriptions



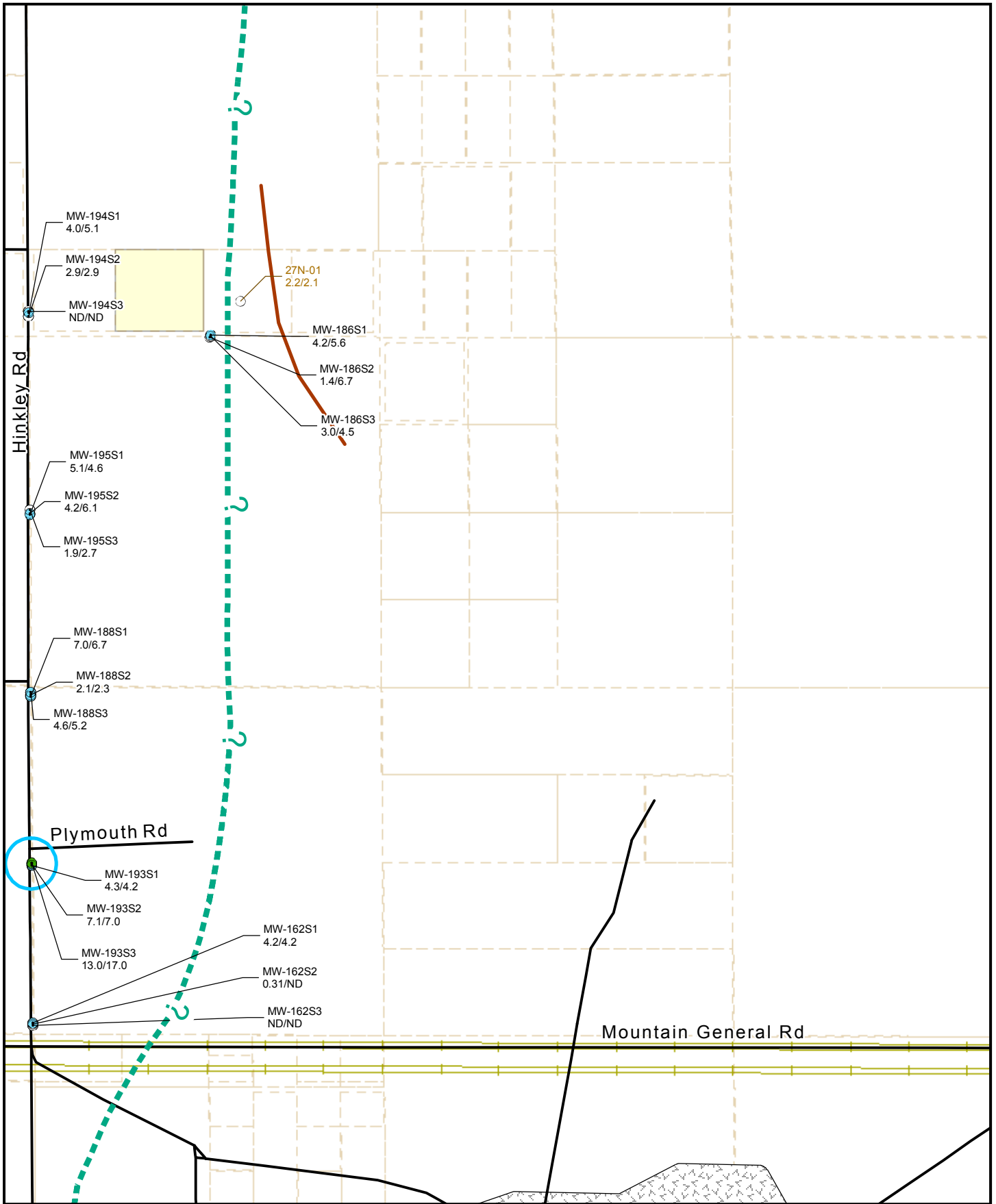
MAP 03



See Legend Figure for
Feature Descriptions



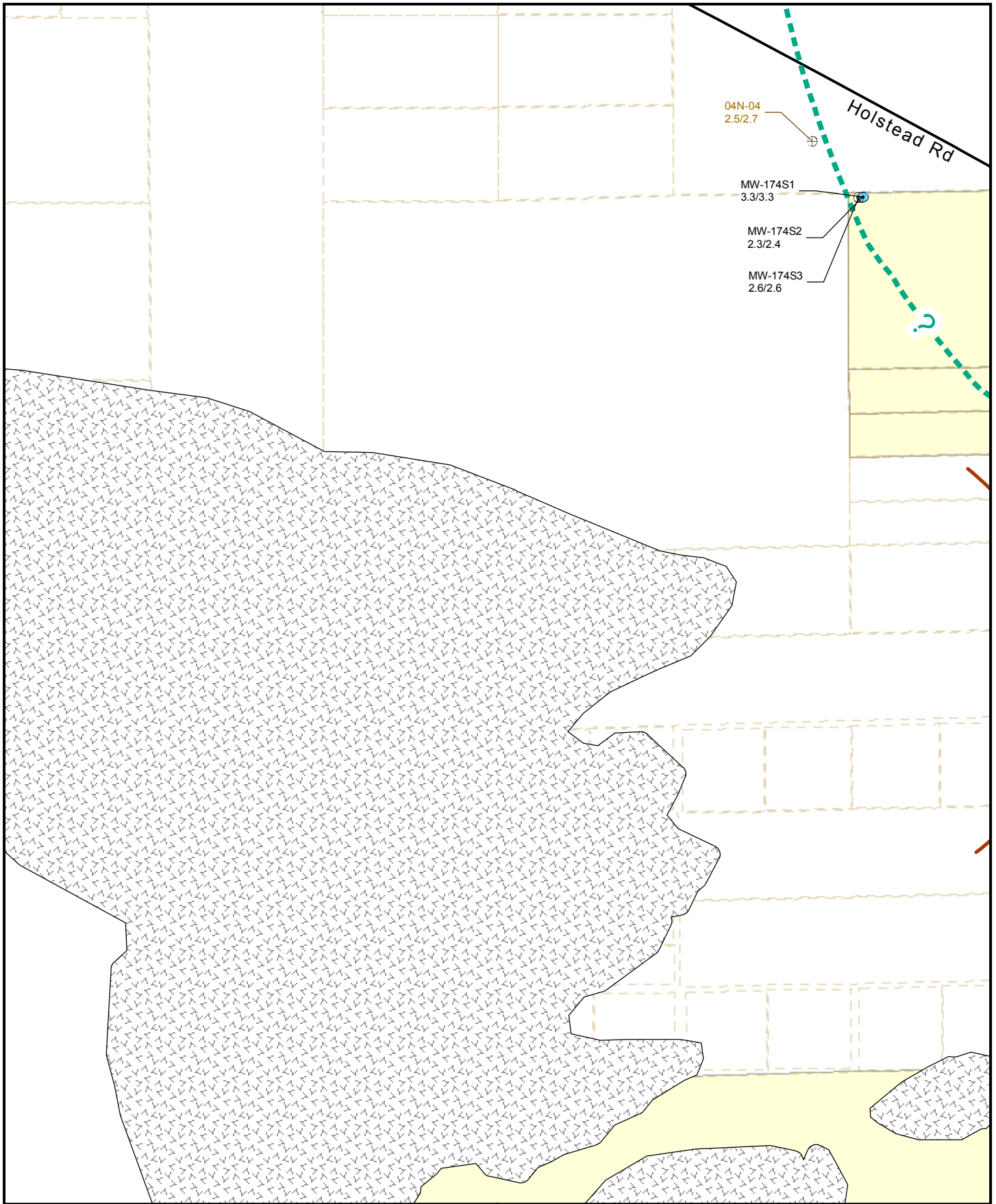
MAP 04



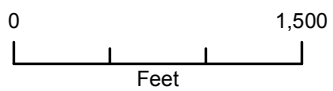
See Legend Figure for
Feature Descriptions



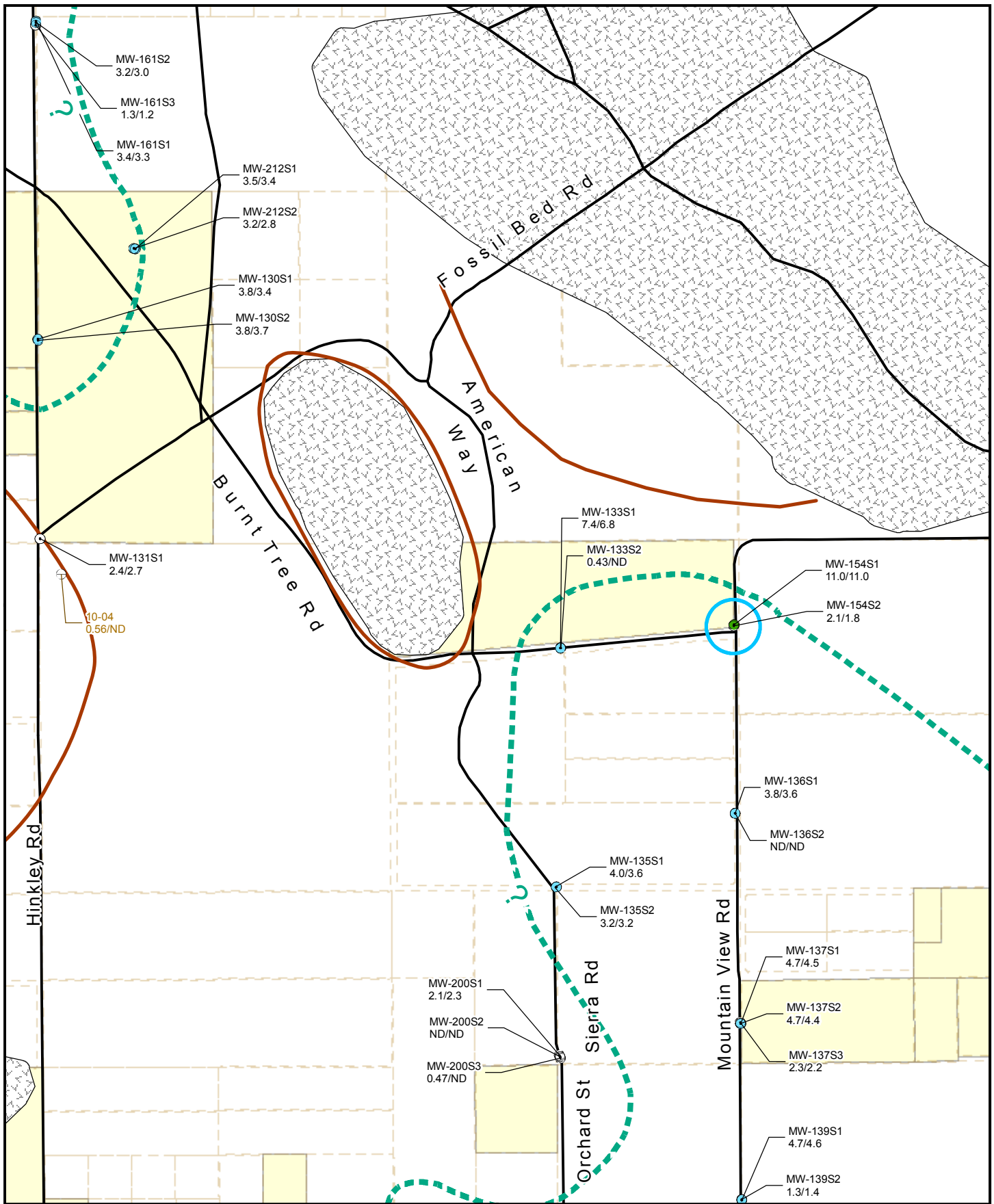
MAP 05



See Legend Figure for
Feature Descriptions

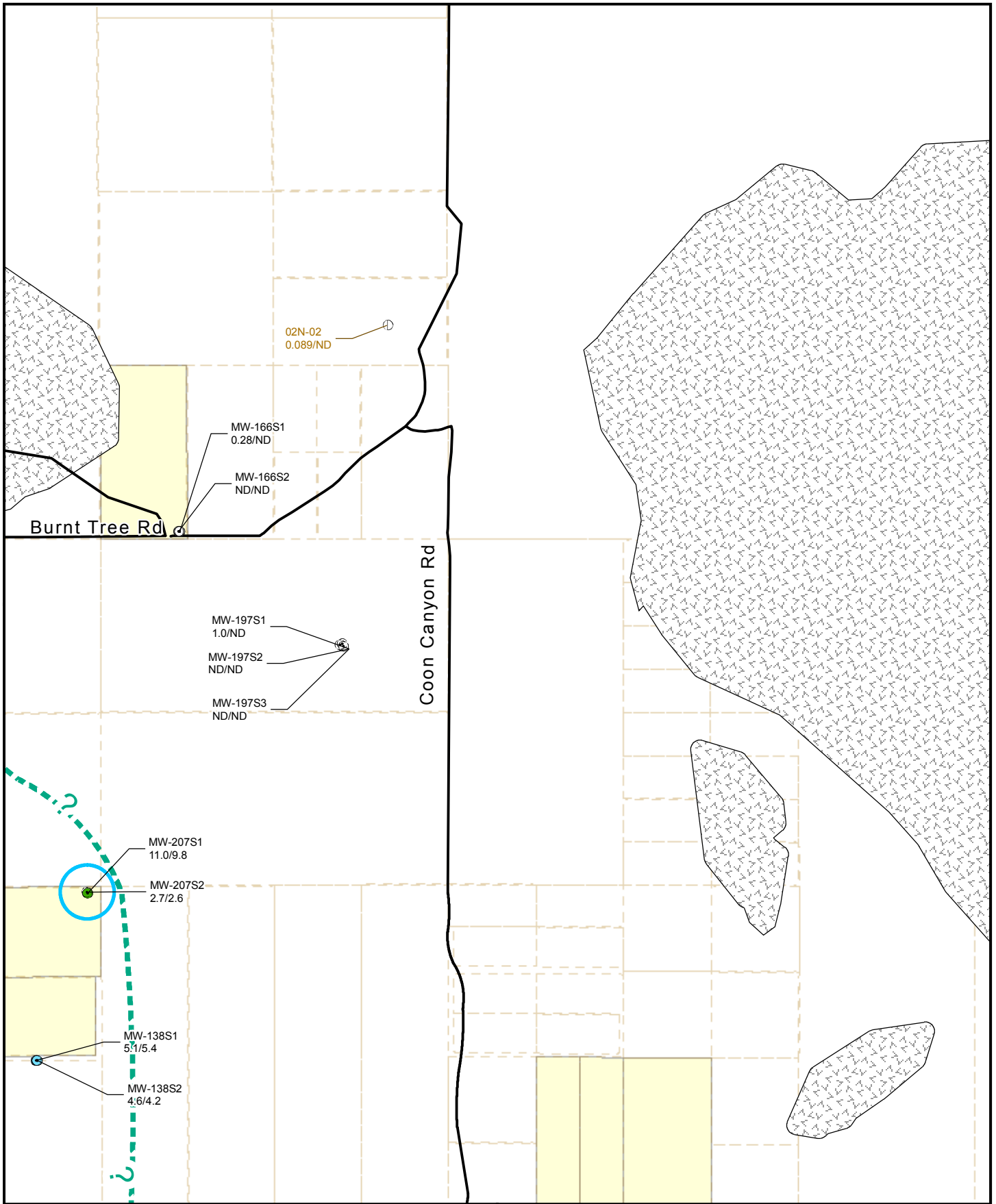


MAP 06



See Legend Figure for
Feature Descriptions

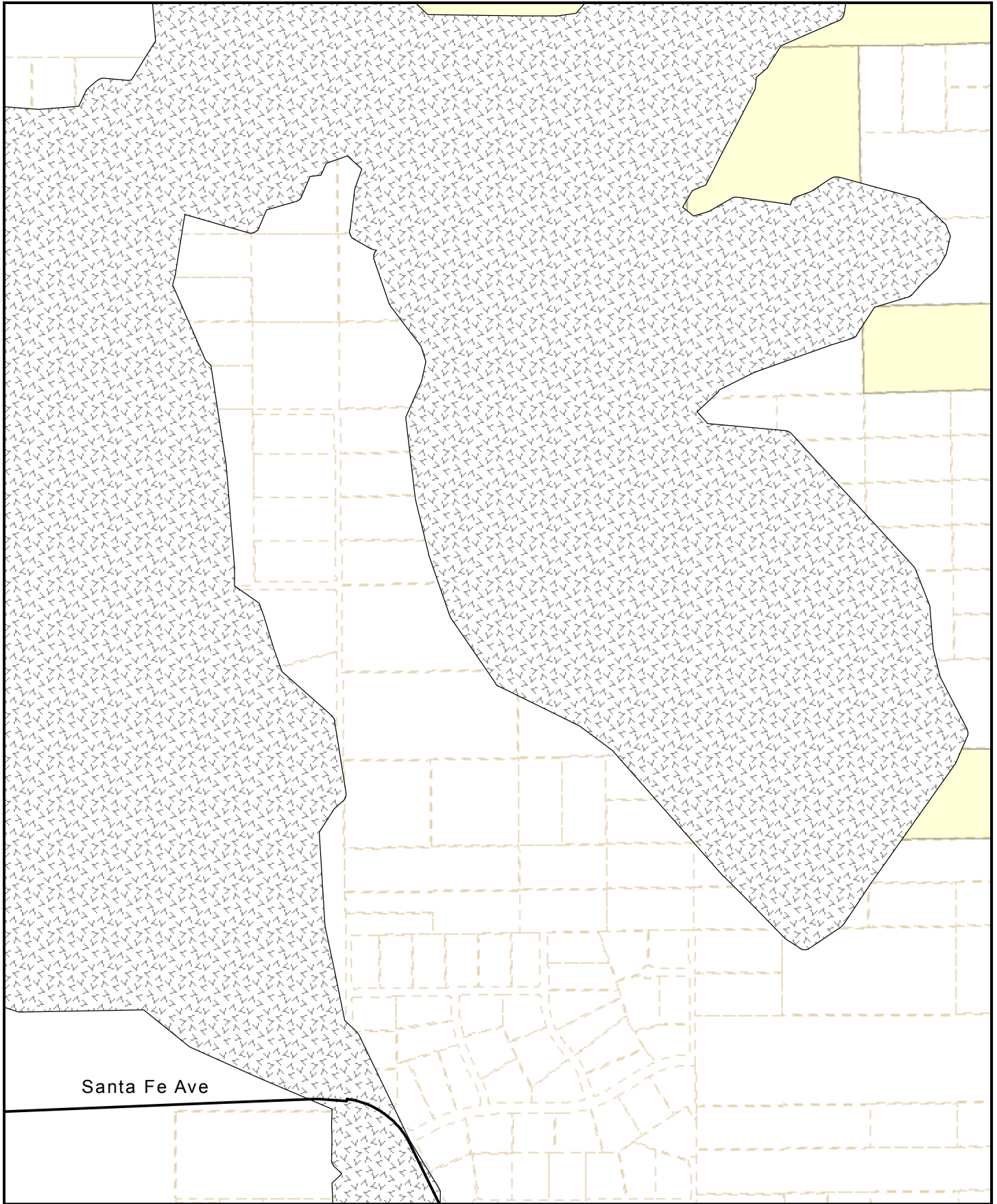
MAP 07



See Legend Figure for
Feature Descriptions

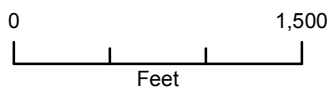


MAP 08

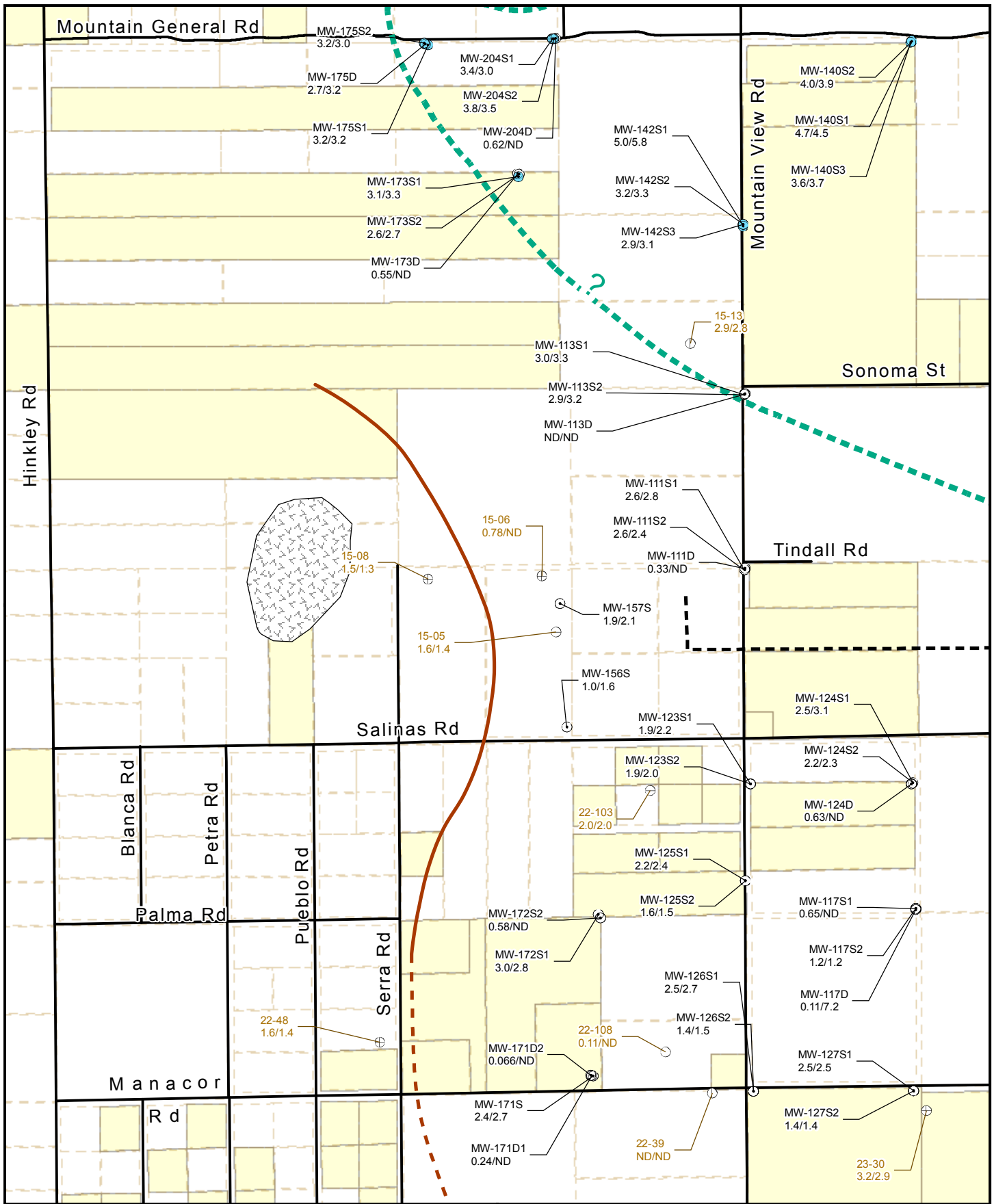


Santa Fe Ave

**See Legend Figure for
Feature Descriptions**



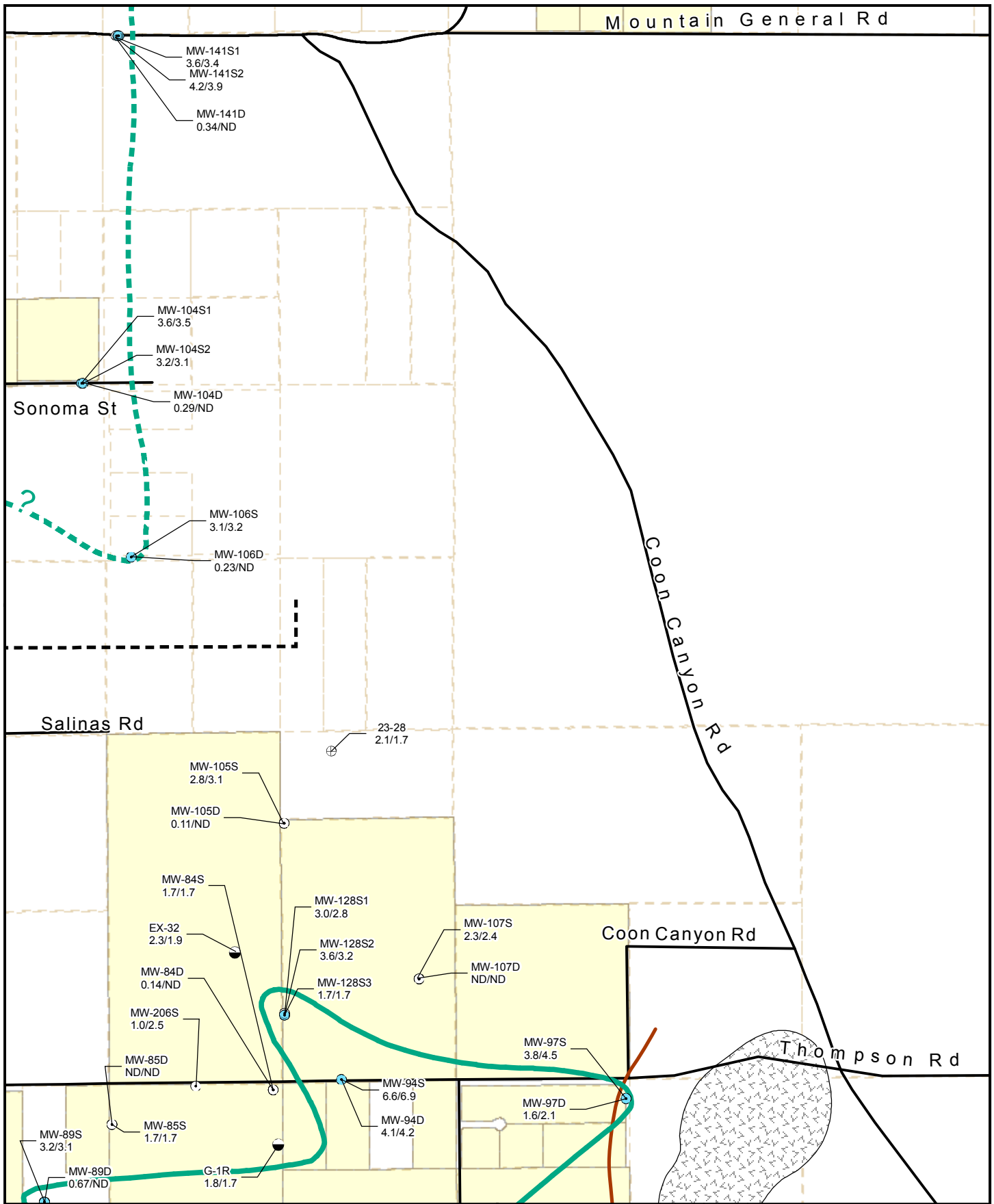
MAP 09



See Legend Figure for Feature Descriptions



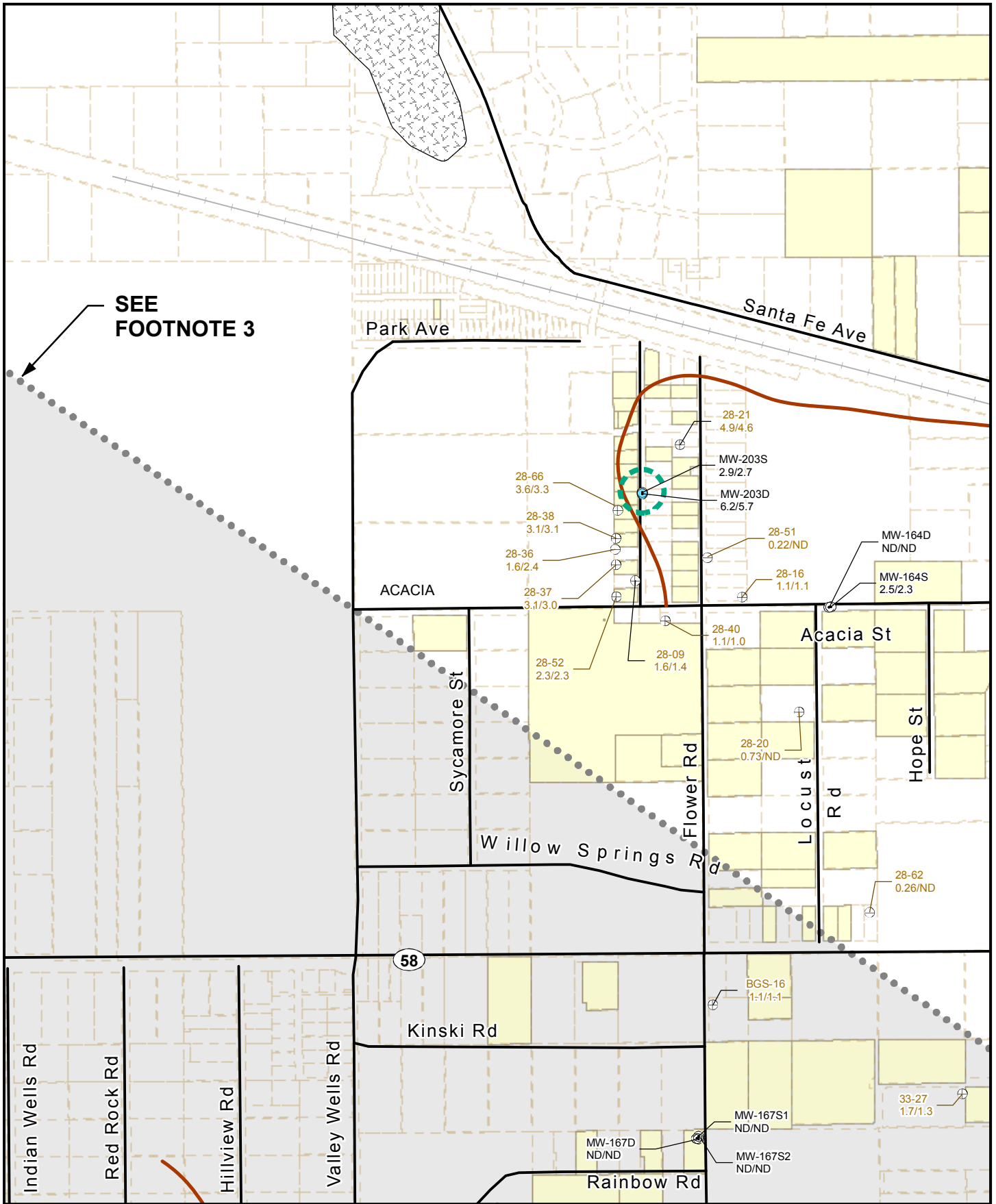
MAP 10



See Legend Figure for
Feature Descriptions



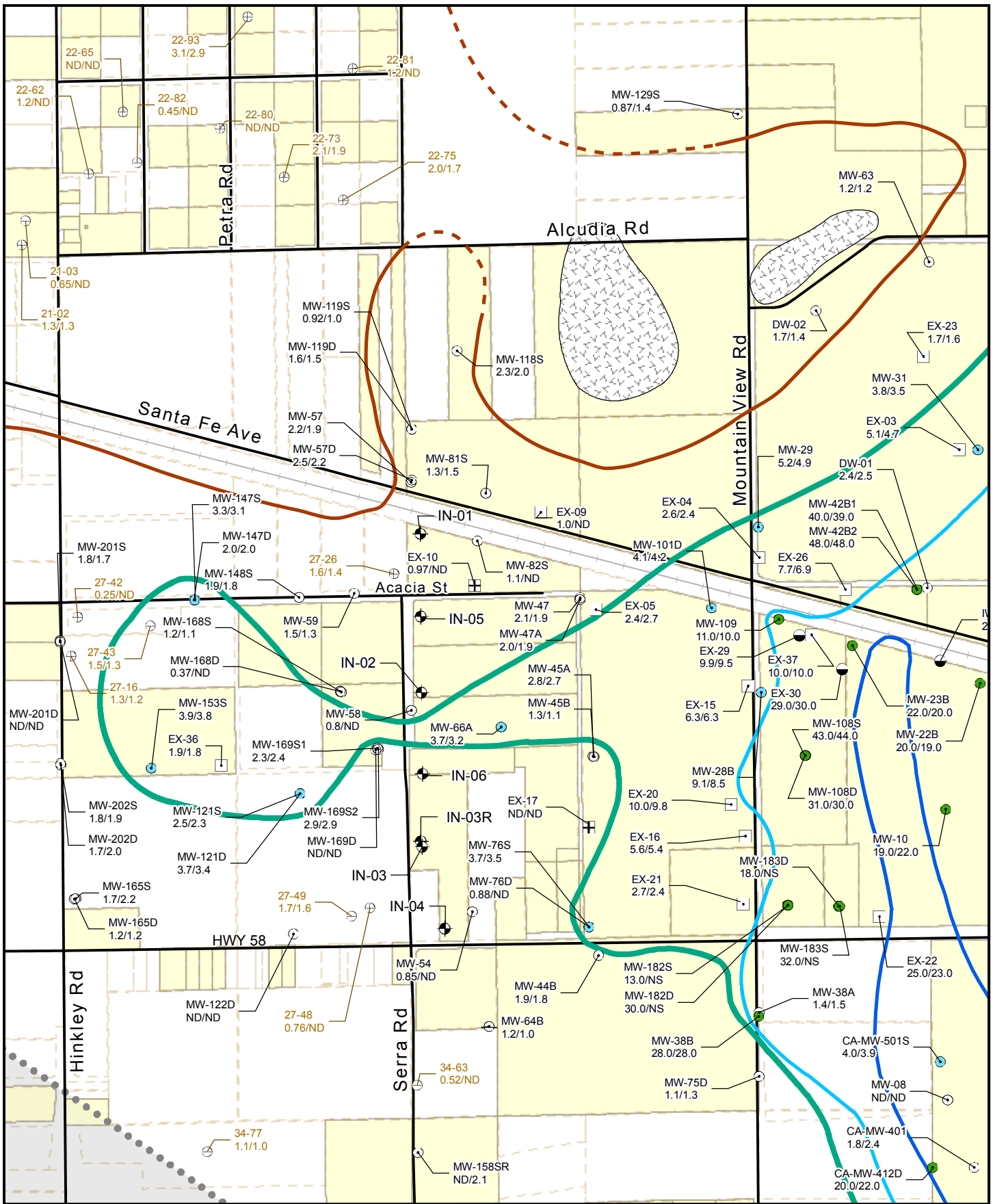
MAP 11



See Legend Figure for Feature Descriptions

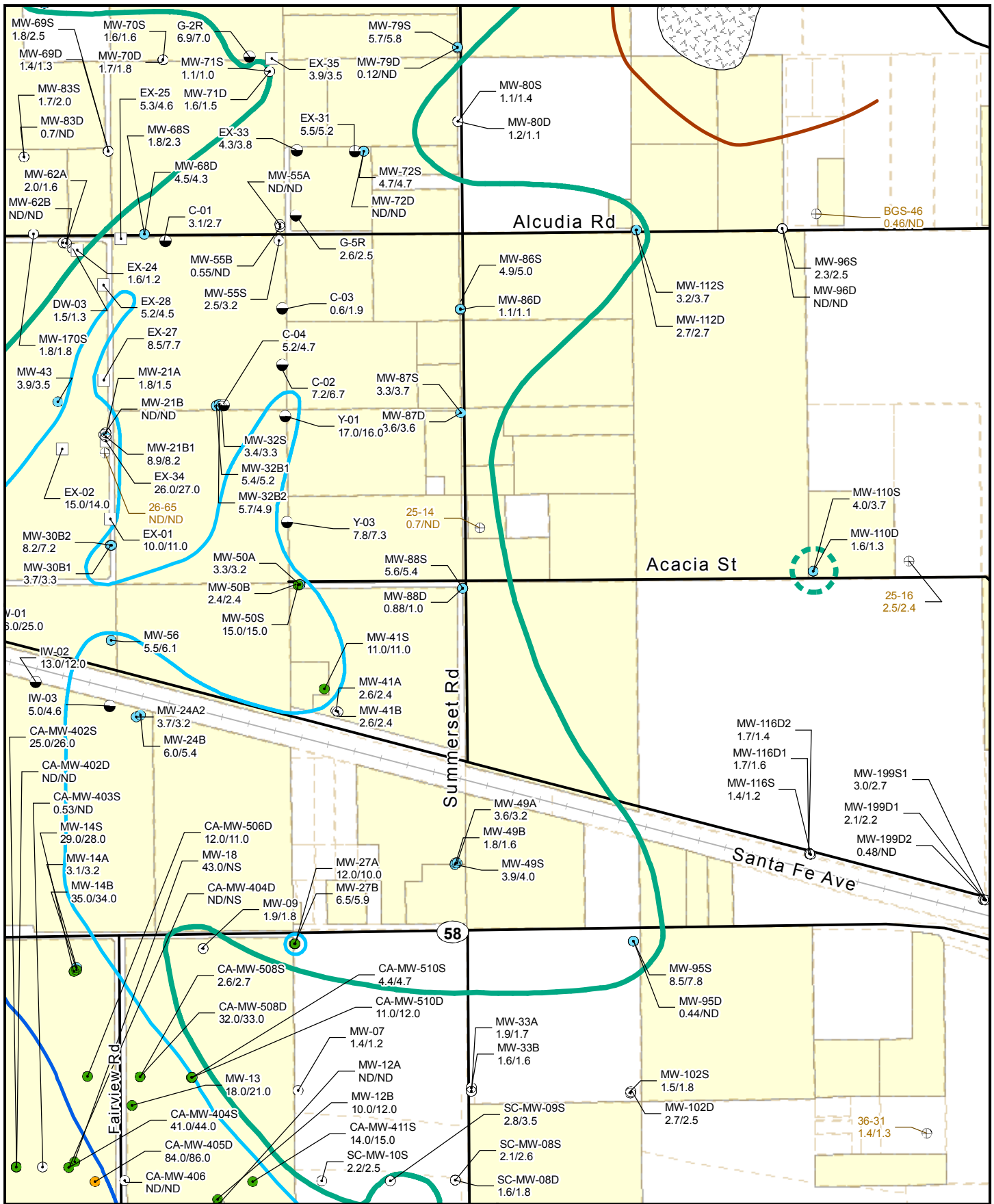


MAP 12



See Legend Figure for Feature Descriptions

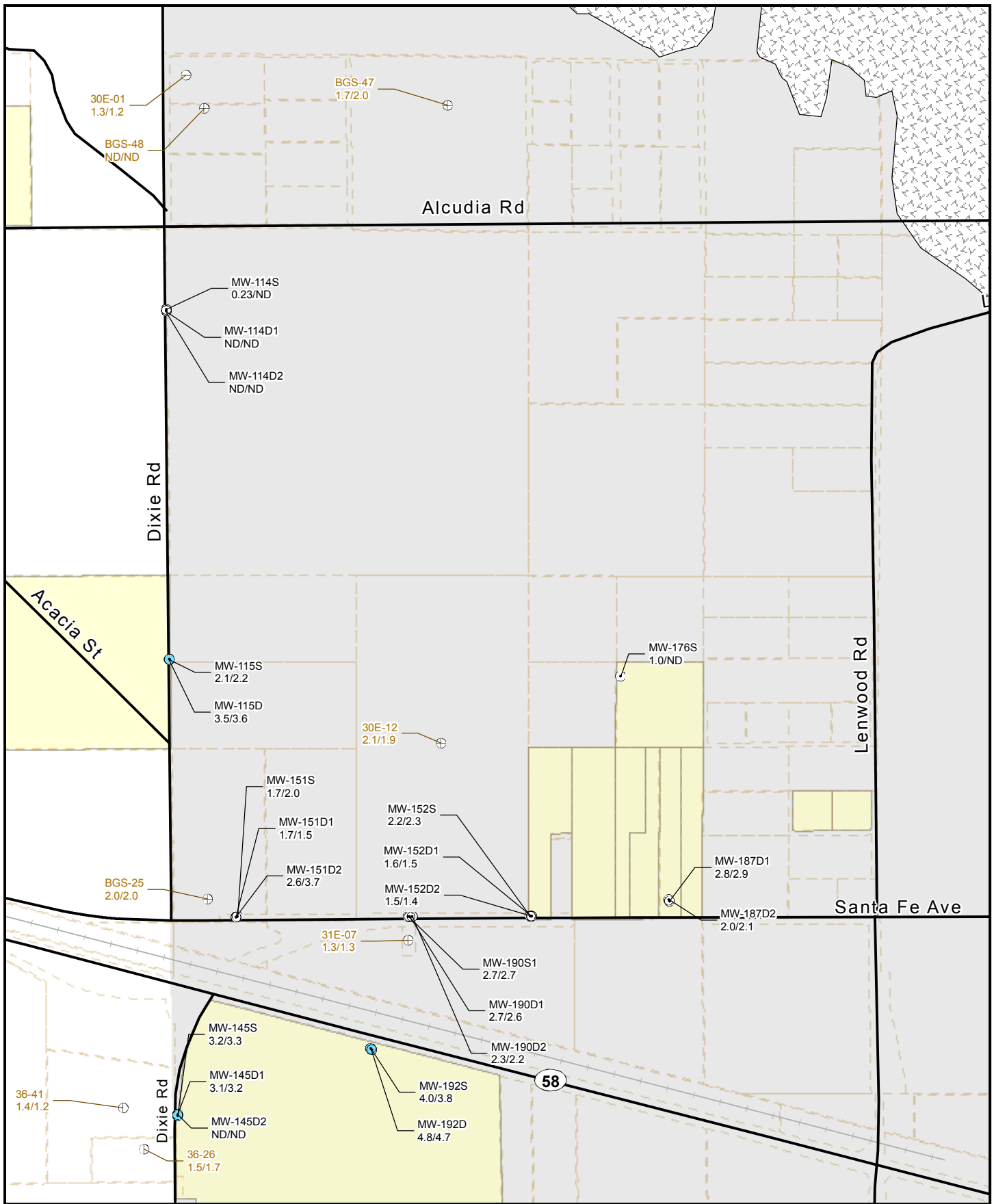




See Legend Figure for
Feature Descriptions



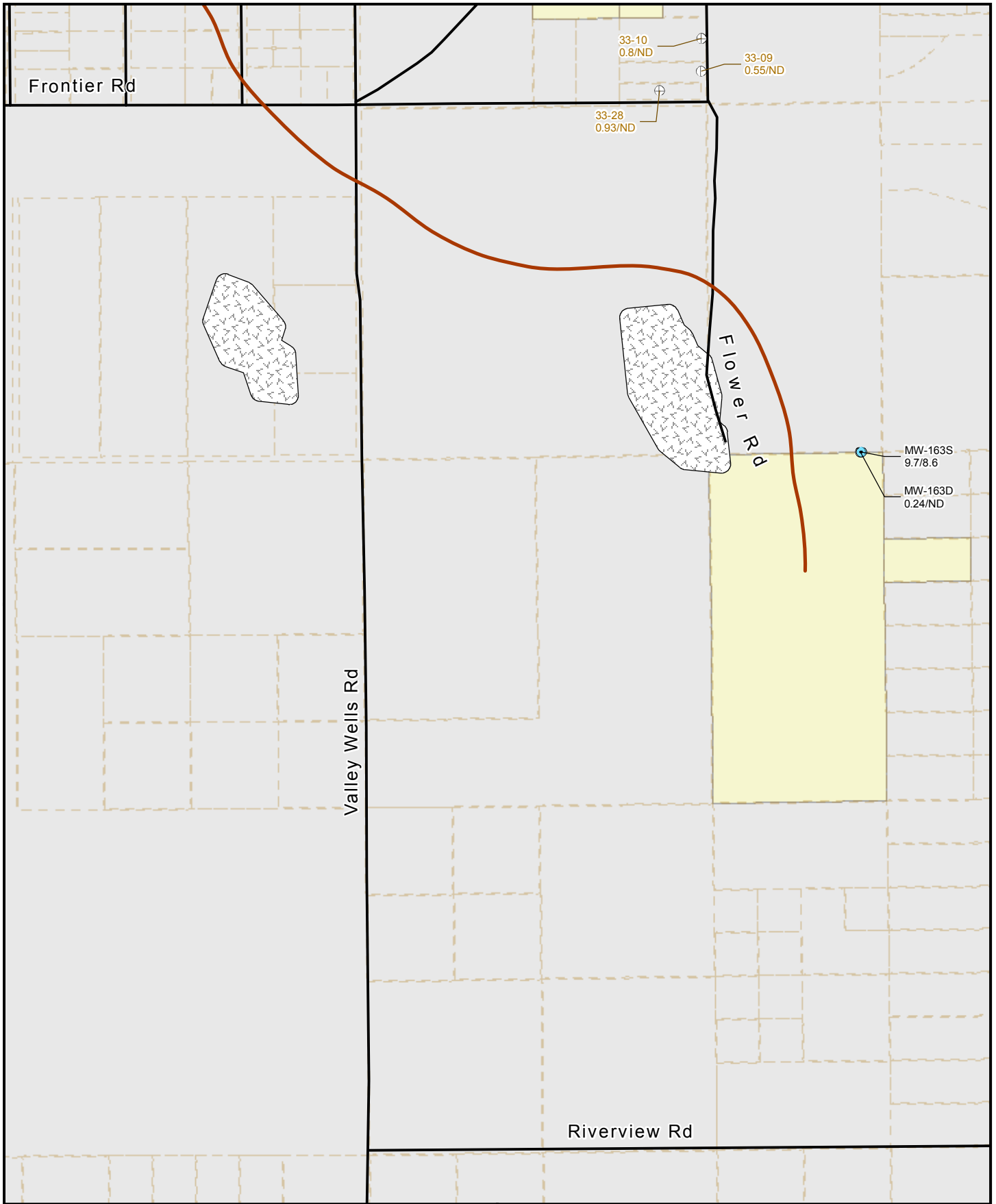
MAP 14



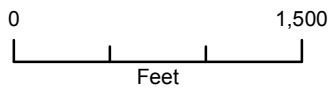
See Legend Figure for
Feature Descriptions



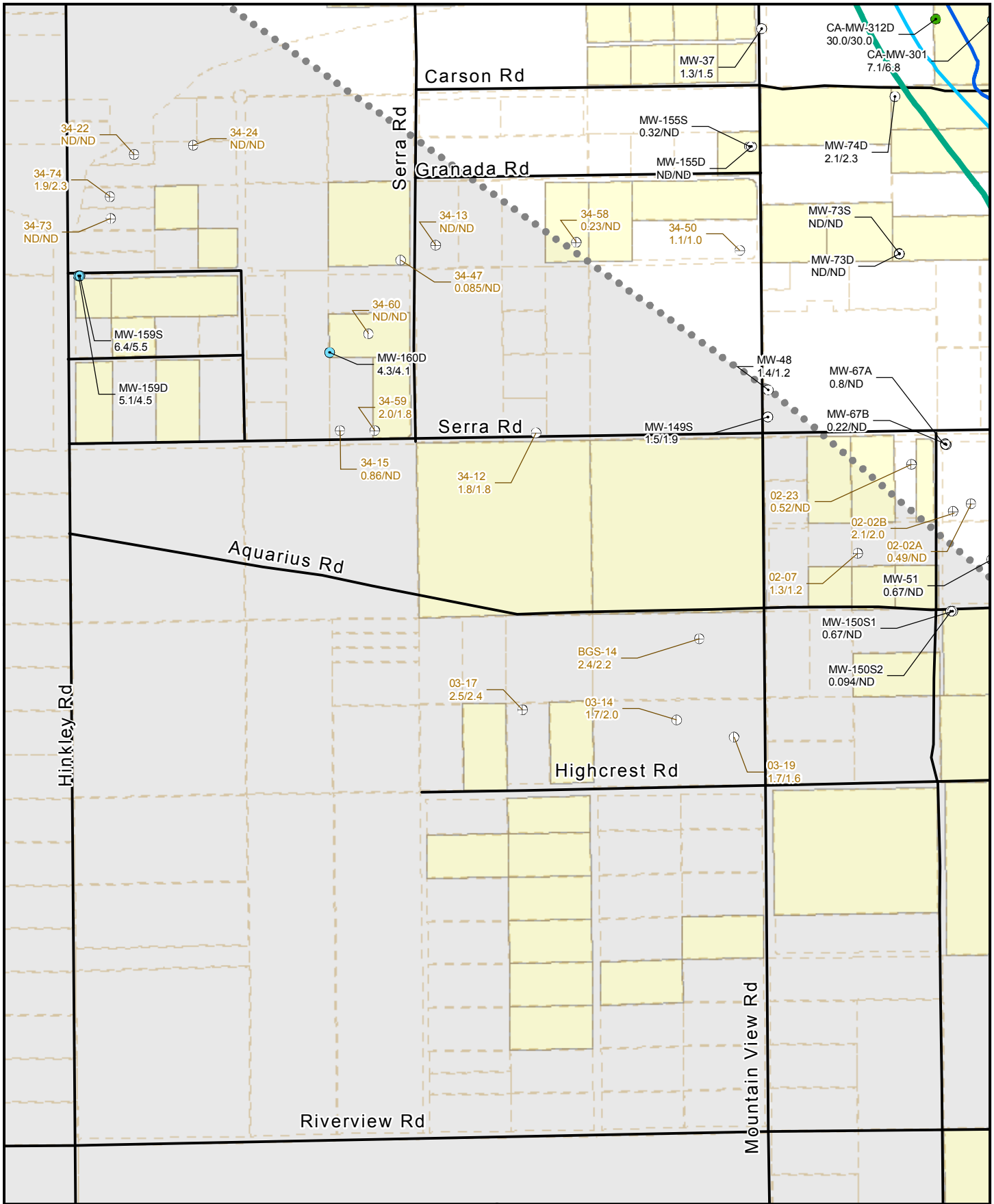
MAP 15



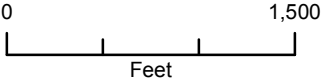
See Legend Figure for
Feature Descriptions



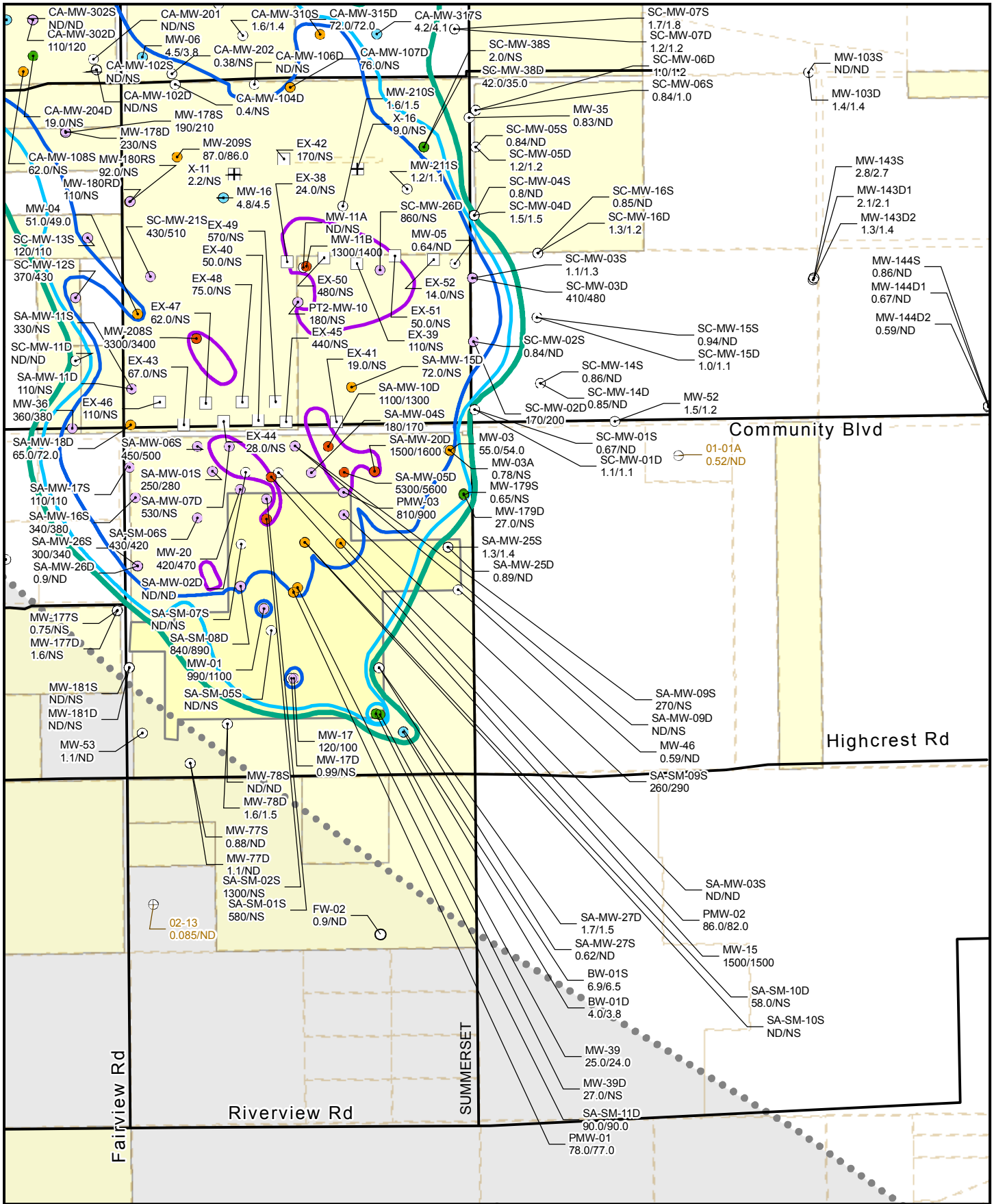
MAP 16



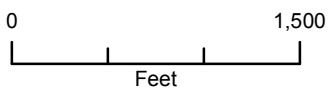
See Legend Figure for
Feature Descriptions



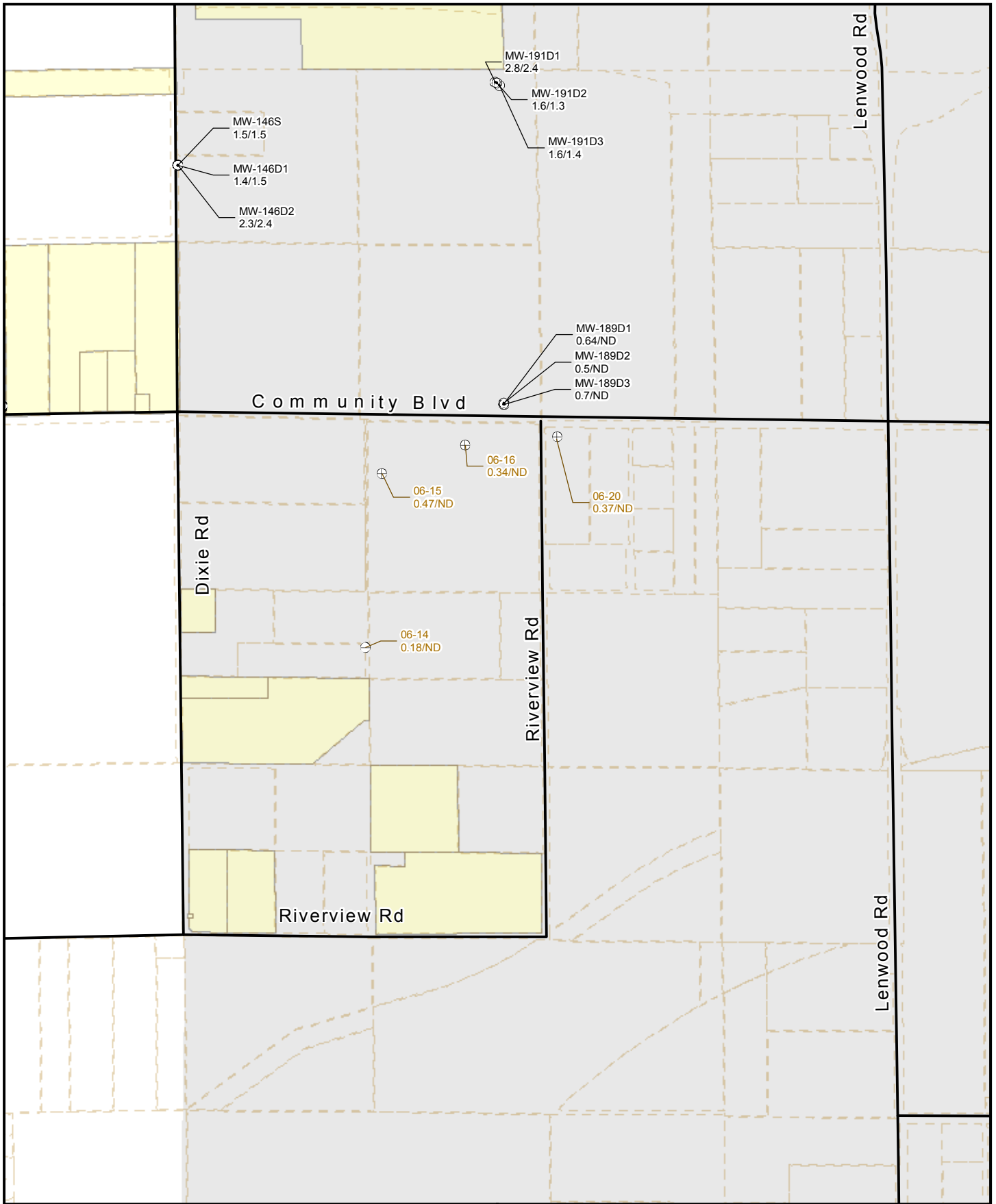
MAP 17



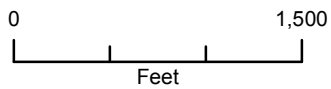
See Legend Figure for
Feature Descriptions



MAP 18



See Legend Figure for
Feature Descriptions



MAP 19