

**CALIFORNIA REGIONAL WATER QUALITY CONTROL BOARD
COLORADO RIVER BASIN REGION**

MONITORING AND REPORTING PROGRAM NO. R7-2008-0034
FOR

ERNEST GOMMEL, OWNER/OPERATOR
WASH 'N SHOP COIN LAUNDRY
LAUNDROMAT WASTEWATER DISPOSAL FACILITY
Lucerne Valley – San Bernardino County

Location of Discharge: W ½ of the NW ¼ of Section 13, T4N, R1W, SBB&M

I. MONITORING

A. Monitoring Provisions

1. Unless otherwise approved by the Regional Water Board Executive Officer, all analyses shall be conducted at a laboratory certified for such analysis by the State Department of Health Services. All analyses shall be conducted in accordance with the latest edition of "Guidelines Establishing Test Procedures for Analysis of Pollutants", (40 CFR Part 136) or equivalent methods promulgated by the United States Environmental Protection Agency (USEPA).
2. The collection, preservation and holding times of all samples shall be in accordance with USEPA approved procedures.
3. The Discharger shall furnish, under penalty of perjury, technical monitoring program reports, submitted in accordance with specifications provided by the Regional Water Board Executive Officer. Such specifications are subject to periodic revision as may be warranted.
4. Monitoring results, including noncompliance, shall be reported as specified in this Monitoring and Reporting Program.
5. The Discharger shall comply with the following:
 - a. Samples and measurements taken for the purpose of monitoring shall be representative of the monitored activity.
 - b. The Discharger shall retain records of monitoring information, including all calibration and maintenance records, and all original strip chart recordings for continuous monitoring instrumentation, copies of all reports required by this Board Order, and records of all data used to complete the application for this Board Order, for a period of at least five (5) years from the date of the sample, measurement, report or application.
 - c. Records of monitoring information shall include:
 - i. The date, exact place, and time of sampling or measurement.
 - ii. The individual performing the sampling or measurement.
 - iii. The date analyses were performed.
 - iv. The individual performing the analysis.
 - v. The analytical technique or method used; and
 - vi. The result of such analysis.

B. Monitoring Requirements

1. The discharger shall monitor the seepage pits for the following:

Parameter	Units	Type of Sample	Sample Frequency	Reporting Frequency
Flow	gpd ¹	measurement	Monthly	Quarterly
TDS	mg/L ²	grab	Quarterly	Quarterly
MBAS ³	mg/L	grab	Quarterly	Quarterly

2. The Discharger shall monitor the community water supply for the following:

Parameter	Units	Type of Sample	Sample Frequency	Reporting Frequency
TDS	mg/L	grab	Quarterly	Quarterly

3. The Discharger shall submit an annual status report that includes at a minimum:
 - a. Wastewater surfacing or other system failures occurring in the past year.
 - b. System maintenance performed in the past year.
 - c. Modifications to the disposal facility proposed for next year.

II. REPORTING

A. Reporting Requirements

1. The discharger shall arrange the data in tabular form so that the specified information is readily discernible. The data shall be summarized in a manner to clearly illustrate whether the facility is operating in compliance with waste discharge requirements.
2. If the facility is not in operation, or there is no discharge during a required reporting period, the Discharger shall forward a letter to the Regional Water Board indicating that no activity during the required reporting period.
3. The results of any analysis performed more frequently than required using test procedures and locations specified in this Monitoring and Reporting Program shall be reported to the Regional Water Board.
4. Monitoring reports shall be certified under penalty of perjury to be true and correct, and shall contain the required information at the frequency designated in this monitoring report.

¹ gallons per day

² milligrams per liter

³ Methylene Blue Active Substances

5. Each report shall contain the following statement:

"I declare under the penalty of law that I have personally examined and am familiar with the information submitted in this document, and that based on my inquiry of those individuals immediately responsible for obtaining the information, I believe that the information is true, accurate, and complete. I am aware that there are significant penalties for submitting false information, including the possibility of a fine and imprisonment for knowing violations".

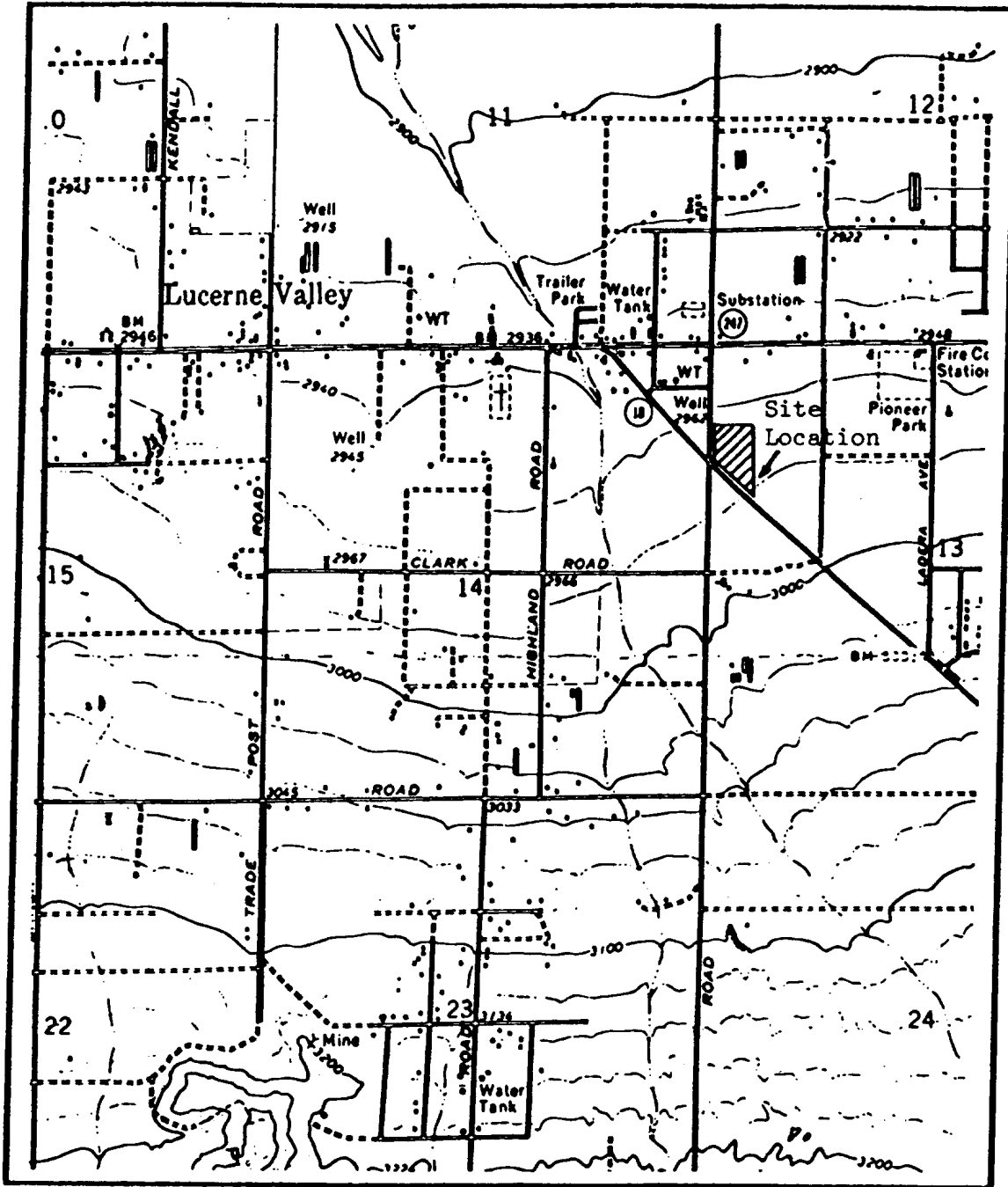
6. A duly authorized representative of the discharger may sign the documents if:
- a. Authorization is made in writing by the person described above.
 - b. Authorization specifies an individual or person having responsibility for the overall operation of the regulated disposal system, and
 - c. Written authorization is submitted to the Regional Water Board Executive Officer.
7. Reporting failures in the waste disposal system shall be as described in the Provisions of this Board Order.
8. Quarterly reports shall be submitted to the Regional Water Board by the **15th day of the month following the end of each calendar quarter (i.e., by January 15th , April 15th , July 15th , and October 15th)** Annual reports shall be submitted to the Regional Water Board by **January 15th .**
9. Submit monitoring reports to:

California Regional Water Quality Control Board
Colorado River Basin Region
73-720 Fred Waring Drive, Suite 100
Palm Desert, CA 92260

Ordered by: _____ Original Signed by _____
ROBERT PERDUE
Executive Officer

_____ *On May 21, 2008* _____
Date

CALIFORNIA REGIONAL WATER QUALITY CONTROL BOARD
COLORADO RIVER BASIN REGION



SITE MAP

ERNEST GOMMEL, OWNER/OPERATOR
WASH 'N SHOP COIN LAUNDRY
Lucerne Valley – San Bernardino County
W ½ of the NW ¼ of Section 13, T4N, R1W, SBB&M
USGS Lucerne Valley South 7.5 min. Topographic Map

SCHEMATIC OF CLARIFIER AND PITS TO HANDLE EFFLUENT

