

**CALIFORNIA REGIONAL WATER QUALITY CONTROL BOARD
COLORADO RIVER BASIN REGION**

ORDER NO. 88-9

**WASTE DISCHARGE REQUIREMENTS
FOR
McCAIN VALLEY CONSERVATION CAMP
North of Boulevard - San Diego County**

The California Regional Water Quality Control Board, Colorado River Basin Region, finds that:

1. The California Department of Corrections (hereinafter also referred to as the discharger), 630 K Street Mall, Sacramento, California, 95814, submitted a Report of Waste Discharge, dated July 13, 1987.
2. The discharger proposes to discharge a maximum of 16,000 gallons-per-day of domestic sewage from a prison camp designed to have 150 inmates and a staff of about 30 persons. The wastewater would be collected in the septic tanks of the housing and cafeteria facilities for discharge into three oxidation/infiltration basins that would alternately be used. The basins would have a total design capacity of 19,000 gallons-per-day. Currently, the existing facilities have about 70 inmates discharging into septic tank/leach field disposal systems that are designed for about 40 people. Due to the present overloading, the tanks are discharged to a temporary containment basin. The proposed wastewater treatment and disposal facilities are to be located in the SE $\frac{1}{4}$ of the SW $\frac{1}{4}$ of Section 16, T17S, R7E, SBB&M.
3. There are no domestic wells within 500 feet of the discharge facilities described in Finding No. 2 (above).
4. The Water Quality Control Plan for the Colorado River Basin Region of California was adopted by the Regional Board on November 14, 1984.
5. The Basin Plan delineates the location of discharge to be in the Imperial Hydrologic Unit, which has the following beneficial uses of ground water:
 - a. Municipal supply
 - b. Industrial supply
6. The Board has notified the discharger and interested agencies and persons of its intent to prescribe waste discharge requirements for the proposed discharge.
7. The Board in a public meeting heard and considered all comments pertaining to the proposed discharge.

*Suspended
by 93-022
3/31/93*

8. The California Department of Corrections has approved Negative Declaration SCH No. 86092409 (approval date October 29, 1986) for this camp. The Regional Board has reviewed this Negative Declaration. The below waste discharge requirements are designed to assure against any significant adverse effects on water quality.

IT IS HEREBY ORDERED, the discharger shall comply with the following:

A. Discharge Specifications

1. Neither the treatment nor the discharge of wastewater shall create a pollution or a nuisance as defined in Division 7 of the California Water Code.
2. No wastewater other than domestic sewage shall be discharged into the sewage disposal system described in Finding No. 2 (above).
3. A minimum depth of freeboard of at least two (2) feet shall be maintained in each of the earthen basins.
4. Treated or untreated sludge, or similar solid wastes, shall be disposed only at locations approved by the Regional Board.
5. Adequate measures shall be taken to assure that unauthorized persons and animal pets are effectively excluded from contact with the discharge.
6. Adequate measures shall be taken to assure that flood or surface drainage waters do not erode or otherwise render portions of the discharge facilities inoperable.
7. There shall be no surface flow of wastewater away from the discharge facilities.
8. There shall be no discharge, by pass, or flow of treated or untreated sewage to any drainage channel.
9. Treatment and disposal by ponding shall be conducted in such manner that there shall be no stranded or exposed sewage solids.
10. Treatment and discharge of wastewater shall be conducted by technical procedures which will maintain a surface aerobic environment.
11. Standby facilities shall be provided in the event of pump and/or commercial power failure.
12. Septic tank cleanings shall be discharged only by a duly authorized service.

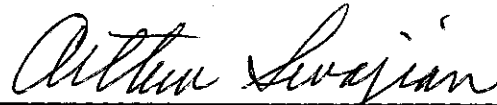
B. Provisions

1. Prior to any modifications in this facility which would result in material change in the quality or quantity of wastewater discharged, or any material

change in location of discharge, the discharger shall report in writing to the Regional Board.

2. The discharger shall comply with the attached "Monitoring and Reporting Program No. 88-9", and future revisions thereto, as specified by the Executive Officer.
3. In the event of any change in control or ownership of land or waste disposal facilities owned or controlled by the discharger, the discharger shall:
 - a. Notify the Board of such change; and
 - b. Transmit a copy of this Order to the succeeding owner or operator, and file a copy of the transmittal letter with this Board.

I, Arthur Swajian, Executive Officer, do hereby certify the foregoing is a full, true and correct copy of an Order adopted by the California Regional Water Quality Control Board, Colorado River Basin Region, on January 27, 1988.



Executive Officer

**CALIFORNIA REGIONAL WATER QUALITY CONTROL BOARD
COLORADO RIVER BASIN REGION**

**MONITORING AND REPORTING PROGRAM NO. 88-9
FOR
McCain Valley Conservation Camp
North of Boulevard - San Diego County**

Location of Discharge: Portion of SE $\frac{1}{4}$, SW $\frac{1}{4}$ of Section 16, T17S, R7E, SBB&M

MONITORING

The discharger shall submit the following information in an annual status report:

1. Estimate of average daily flow (gpd) of sewage discharged to basin(s).
2. Number of persons (or bed spaces) presently discharging to the sewerage system.
3. List of any proposed changes during the coming year.
4. Explain any problems in the sewerage system during the preceding year.

REPORTING

1. Monitoring reports shall be submitted to the Regional Board annually by January 15th of each year to:

California Regional Water Quality Control Board
Colorado River Basin Region
73-271 Highway 111, Suite 21
Palm Desert, CA 92260

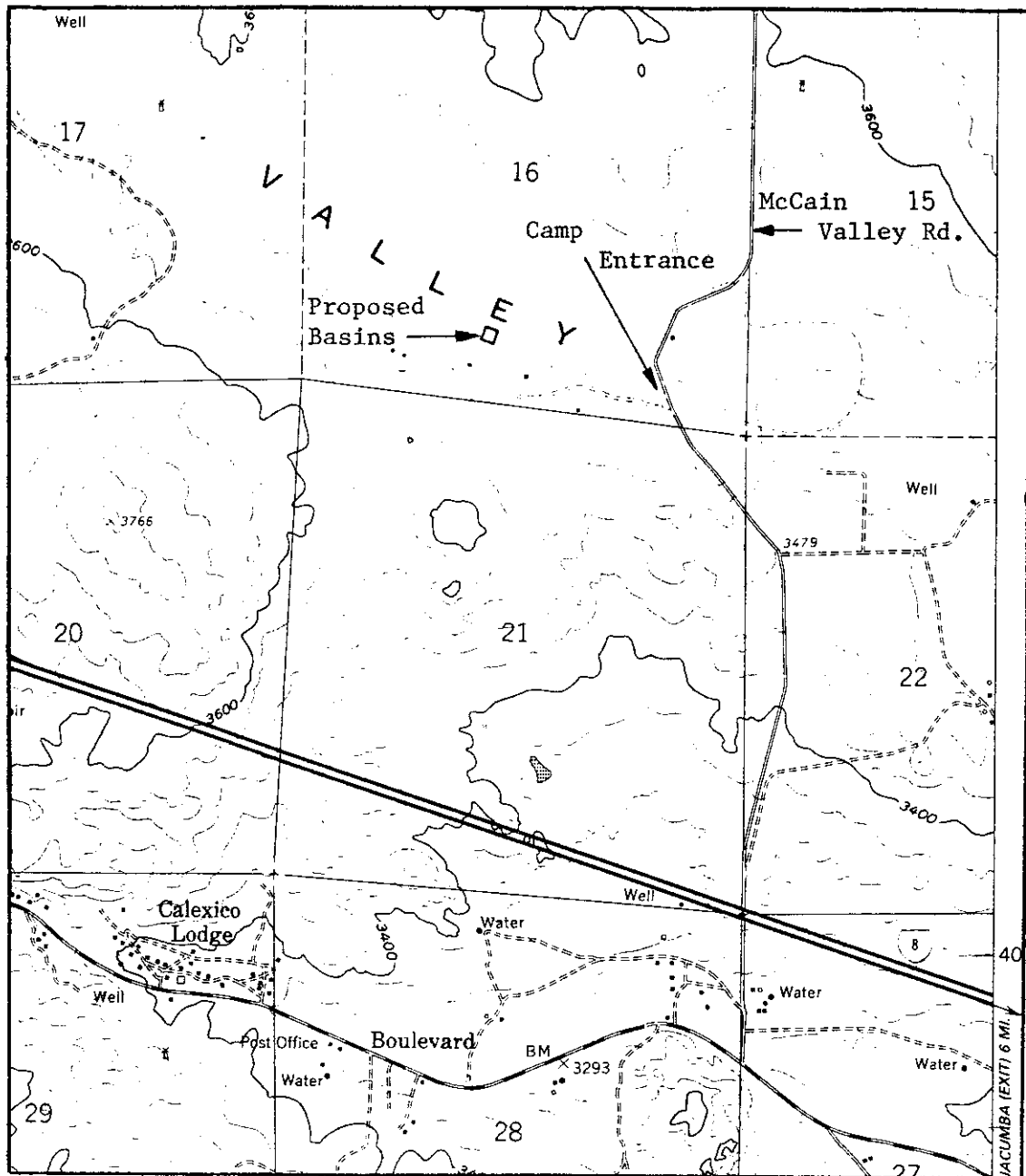
2. Report immediately any failure in the sewerage system by telephone and followup by letter.

ORDERED BY:

Arthur Swajan
Executive Officer

January 27, 1988
Date

CALIFORNIA REGIONAL WATER QUALITY CONTROL BOARD -7

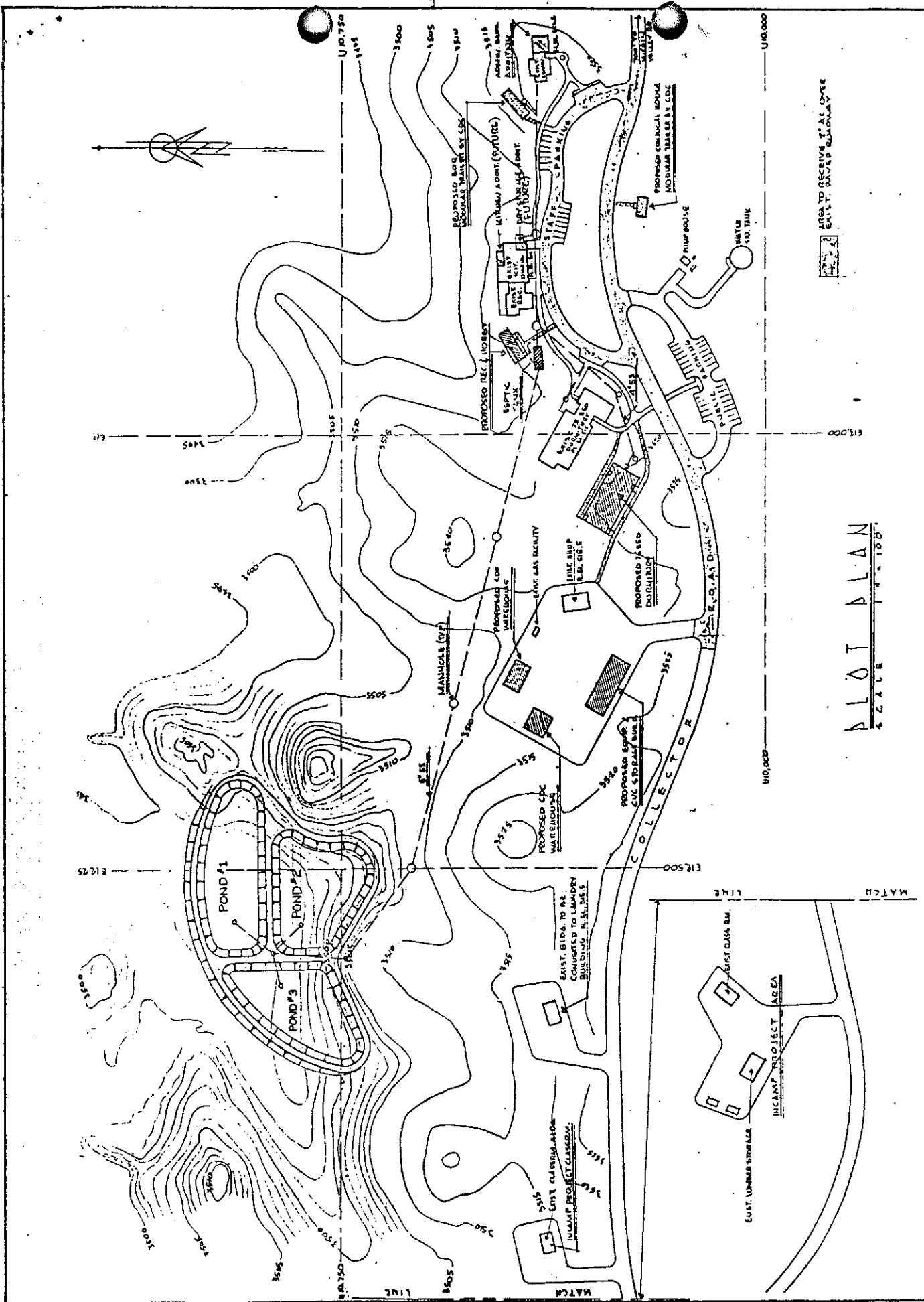


SITE MAP

McCain Valley Conservation Camp
North of Boulevard - San Diego County

Discharge location: SE $\frac{1}{4}$, SW $\frac{1}{4}$ of Section 16, T17S, R7E, SBB&M
USGS Live Oak Springs 7.5 min. Topographic Map

Order No. 88-9



REVISIONS	DATE	BY	DESCRIPTION	APP'D.	DESIGNED BY	4.8 DATA TO HELP	APPROVED BY

STATE OF CALIFORNIA
THE RESOURCES AGENCY
DEPARTMENT OF FORESTRY



SCHEMATIC STUDY No. 8
PROPOSED CONSERVATION CAMP
McCain Valley
San Diego County, Region III

PLAN CATEGORY	SCHEMATIC STUDY No. 8	SHEET 5 OF
PROJECT	PROPOSED CONSERVATION CAMP	DATE
LOCATION	McCain Valley San Diego County, Region III	PLAN No.

PRELIMINARY SEWAGE DISPOSAL FACILITIES SKETCH
McCain Valley Conservation Camp
North of Boulevard - San Diego County