

CALIFORNIA REGIONAL WATER QUALITY CONTROL BOARD
COLORADO RIVER BASIN REGION

ORDER NO. 88-47

WASTE DISCHARGE REQUIREMENTS
FOR
BUREAU OF RECLAMATION SEWAGE TREATMENT PLANT
Parker Dam Area - San Bernardino County

The California Regional Water Quality Control Board, Colorado River Basin Region, finds that:

1. U. S. Department of the Interior, Bureau of Reclamation, Parker Dam, California, 92267, verified as accurate on February 4, 1988, the updated information given below.
2. The discharger is discharging a maximum of 23,000 gallons-per-day of domestic sewage into an extended aeration activated sludge treatment plant that serves a community with a maximum population of 200 from September until May in the Parker Dam area. The plant is designed for a maximum flow of 30,000 gallons-per day. The treated effluent from the plant is discharged into three infiltration basins which are situated more than 200 feet from the Colorado River. This wastewater disposal site is located in the NW $\frac{1}{4}$ of Section 10, T2N, R27E, SBB&M. Also, a small quantity of backwash water from the community water treatment plant is periodically discharged into this sewage treatment plant.
3. The discharge of wastewater from this facility has been subject to waste discharge requirements adopted in Board Order No. 84-99.
4. There are no domestic wells within 500 feet of the sewage disposal facilities described in Finding No. 2 (above).
5. During occasional periods of maximum operational river flow the wastewater disposal facilities are less than 200 feet from the high water line of the Colorado River. However, a two-foot berm around the site is proposed that would provide adequate flood protection.
6. The Water Quality Control Plan for the Colorado River Basin Region of California was adopted by the Board on November 14, 1984.

The Basin Plan delineates the location of discharge to be in the Colorado Hydrologic Unit which has the following beneficial uses of ground water:

- a. Municipal Supply
- b. Industrial Supply
- c. Agricultural Supply

The Board has notified the discharger and interested agencies and persons of its intent to update waste discharge requirements for the discharge.

*3-13-91
Superseded
with Order
#91-016*

9. The Board in a public meeting heard and considered all comments pertaining to the existing discharge.
10. These waste discharge requirements govern an existing facility, which the discharger is currently operating, and therefore is exempt from the provisions of the California Environmental Quality Act in accordance with Section 15301, Chapter 3, Title 14 of the California Code of Regulations.

IT IS HEREBY ORDERED, the discharger shall comply with the following:

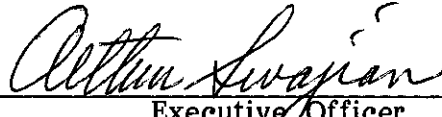
A. Discharge Specifications

1. Standby power and pumping facilities shall be provided in the event of pump and/or commercial power failure.
2. The sewage disposal facilities shall not be located within 200 feet of the normal regulated high water line of the Colorado River.
3. The incremental increase of Total Dissolved Solids concentration in the discharged wastewater shall not exceed 400 mg/l above the flow weighted average of that concentration contained in the local water supply.
4. The maximum daily flow shall not exceed 30,000 gallons-per-operating day.
5. The 5-day 20°C biochemical oxygen demand of wastewater delivered to any infiltration basin shall not exceed 40 mg/l.
6. On or before September 1, 1988, the discharger shall construct a protective dike around the disposal facilities as described in Finding No. 5, above, and shall submit written certification from a California Registered Civil Engineer that the protective dike was designed and constructed to provide the necessary degree of flood protection.

B. Provisions

1. Prior to any modifications in this facility which could result in material change in the quality or quantity of wastewater discharged, or any material change in the location of the discharge, the discharger shall report in writing to the Regional Board.
2. This Order supersedes Board Order No. 84-99.
3. The discharger shall comply with "Monitoring and Reporting Program No. 88-47, and future revisions thereto, as specified by the Executive Officer.
4. The discharger's wastewater treatment plant shall be supervised and operated by persons possessing certification of appropriate grade pursuant to Subchapter 14, Chapter 3, Title 23, California Code of Regulations.

I, Arthur Swajian, Executive Officer, do hereby certify the foregoing is a full, true and correct copy of an Order adopted by the California Regional Water Quality Control Board, Colorado River Basin Region, on March 23, 1988.



Executive Officer

**CALIFORNIA REGIONAL WATER CONTROL BOARD
COLORADO RIVER BASIN REGION**

MONITORING AND REPORTING PROGRAM NO. 88-47
FOR
BUREAU OF RECLAMATION SEWAGE TREATMENT PLANT
Parker Dam Area - San Bernardino County

Location of Discharge: NW $\frac{1}{4}$ of Section 10, T2N, R27E, SBB&M

MONITORING

Wastewater which is to be delivered to infiltration basins shall be monitored for the following constituents:

<u>Constituent or Characteristic</u>	<u>Unit</u>	<u>Type of Sample</u>	<u>Sampling Frequency</u>
20°C BOD ₅	mg/l	6-Hr. Composite	Quarterly
Total Dissolved Solids	mg/l	Grab	Quarterly

SEWAGE SLUDGE

The discharger shall report quarterly on quantity, method, and location of sewage sludge discharge.

COMMUNITY WATER SUPPLY

The water supply to the community shall be monitored for the following constituents:

<u>Constituent</u>	<u>Unit</u>	<u>Type of Sample</u>	<u>Sampling Frequency</u>
Total Dissolved Solids	mg/l	Grab	Annually

Monitoring reports shall be submitted to the Regional Board as follows:

Annual reports - by January 15 of the following year.

Quarterly reports - by January 15, April 15, July 15, and October 15 of each year.

Forward monitoring reports to:

California Regional Water Quality Control Board
Colorado River Basin Region
73-271 Highway 111, Suite 21
Palm Desert, CA 92260

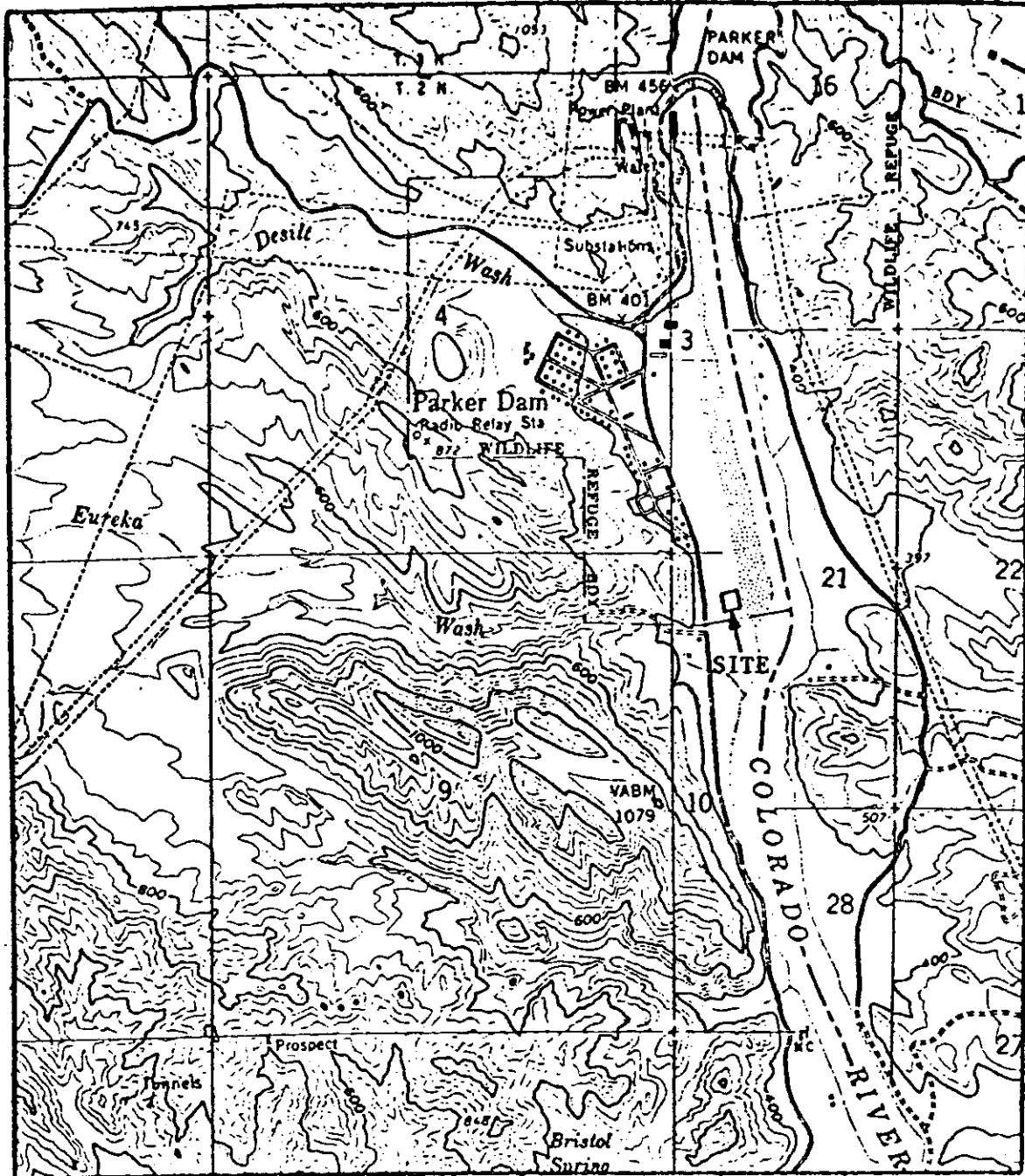
ORDERED BY:


Executive Officer

March 23, 1988

Date

CALIFORNIA REGIONAL WATER QUALITY CONTROL BOARD - 7



SITE MAP

BUREAU OF RECLAMATION SEWAGE TREATMENT PLANT
Parker Dam Area - San Bernardino County
NW $\frac{1}{4}$ of Section 10, T2N, R27E, SBB&M
USGS Gene Wash 7.5 min. Topographic Map