

**CALIFORNIA REGIONAL WATER QUALITY CONTROL BOARD
COLORADO RIVER BASIN REGION**

ORDER NO. 88-38

**WASTE DISCHARGE REQUIREMENTS
FOR
COUNTY OF SAN BERNARDINO
MORONGO WASTE MANAGEMENT FACILITY
Morongo Valley - San Bernardino County**

The California Regional Water Quality Control Board, Colorado River Basin Region, finds that:

1. San Bernardino County Solid Waste Management (hereinafter also referred to as the discharger), 825 East Third Street, San Bernardino CA 92415, submitted a Report of Waste Discharge, dated December 7, 1987, containing current information to update requirements for this existing disposal site.
2. This disposal facility has been subject to Board Order No. 83-38 containing waste discharge requirements, which are being updated to comply with current regulations in Section 13263 of the California Water Code and Subchapter 15, Chapter 3, Title 23, California Code of Regulations.
3. The discharger is currently discharging non-hazardous solid wastes in the S 1/2 of the NW 1/4 of Section 27, T1S, R4E, SBB&M. This 75-acre Class III disposal site is owned by the County of San Bernardino. Presently, about 5 acres of the site is used for disposal. Life expectancy of the entire site exceeds 12 years.
4. The discharger operates the site as a landfill. The site presently receives approximately 14,000 cubic yards per year of the following:
 - a. Residential refuse
 - b. Commercial refuse
 - c. Construction/demolition wastes.
5. The total remaining capacity of the disposal site is approximately 150,000 cubic yards. This site is operated as an area type landfill except for some cut and cover when new areas are opened. Generally, solid waste is dumped on the table adjacent to the shoulder of the slope of the previous excavated cell. It is pushed downslope and spread approximately 1-2 feet deep, after which three to five passes are made by a tractor to compact the trash before additional waste is added. At the end of the day, soil is either pushed up from the toe of the slope or brought in by the tractor; and the compacted waste is covered with a 6 inch layer of interim soil cover.
6. Land within 1,000 feet of this site is zoned for public use. At present, it is natural desert.

*3-13-91
Superseded
with Order
no. 91-022*

7. Existing units at the site conform to the criteria contained in said Subchapter 15 for classification as a Class III waste management facility suitable to receive "nonhazardous solid" and "inert" wastes.
8. The Water Quality Control Plan for the Colorado River Basin Region of California was adopted by the Regional Board on November 14, 1984.
9. The Basin Plan delineates the location of discharge to be in the Morongo Hydrologic Subunit, which has the following beneficial uses of ground water: municipal supply and domestic supply. Ground waters in this area range in total dissolved solids concentration from about 400 to 600 mg/l. Nearby wells indicate depth to ground water at the site is about 200 feet.
10. The disposal area presently utilized is at an elevation of about 2680 feet and is in the mouth of a steep, narrow canyon that drains approximately 210 acres of watershed with a low infiltration rate. The County of San Bernardino has constructed a 100-year drainage channel which begins at the upper end of the active disposal area and diverts drainage waters to the next arroyo to the south. The channel bottom is excavated on native soil and is designed to prohibit drainage from contacting or percolating through the wastes.
11. Soil underlying the site is composed of mainly decomposed granite. No test boring data is available.
12. Annual averages for evaporation and precipitation in the area are 90 inches and 9.7 inches, respectively.
13. The 100-year, 24-hour precipitation event for the site is 6.5 inches.
14. The disposal area is not within the 100-year floodplain.
15. There are no known major earthquake faults underlying the site. Morongo Valley Fault is a minor fault that transects the site.
16. The Board has notified the discharger and interested agencies and persons of its intent to update waste discharge requirements for the existing disposal facility to conform to the current regulations.
17. The Board in a public meeting heard and considered all comments pertaining to this facility.
18. These waste discharge requirements govern an existing facility, which the discharger is currently operating, and therefore is exempt from the provisions of the California Environmental Quality Act in accordance with Section 15301, Chapter 3 of Title 14 of the California Code of Regulations.

IT IS HEREBY ORDERED, that in order to meet the provisions of Division 7 of the California Water Code and regulations adopted thereunder, the discharger shall comply with the following:

A. Discharge Specifications

1. The treatment or disposal of waste shall not cause a pollution or a nuisance as defined in Section 13050 of the California Water Code.

2. Waste material shall be confined to the waste management facility as shown on the attached site maps.
3. The discharge shall not cause degradation of any water supply.
4. The landfill areas shall be designed, constructed, operated and maintained to prevent inundation or washout due to floods with a 100-year return frequency.
5. Surface drainage from tributary areas, and internal site drainage from surface or subsurface sources, shall not contact or percolate through wastes discharged at this site.
6. The exterior surfaces of the disposal area including the intermediate and final landfill covers shall be graded and maintained to promote lateral runoff of precipitation and to prevent ponding.
7. The discharger shall provide a final cover for closure of landfills in conformance with the requirements of said Subchapter 15.
8. Water used during disposal site operations shall be limited to a minimal amount reasonably necessary for dust control purposes.
9. The discharger shall remove and relocate any wastes which are discharged at this site in violation of these requirements.

B. Prohibitions

1. The discharge or deposit of 'hazardous waste' at this site is prohibited.
2. The discharge or deposit of 'designated waste' at this site is prohibited without prior approval from the Regional Board's Executive Officer.
3. The discharge of liquid or semi-solid waste (i.e., waste containing less than 50 percent solids) to the landfill areas is prohibited.
4. The discharge of solid or liquid waste or leachate to surface waters, surface water drainage courses or to ground water is prohibited.
5. The placement of 'nonhazardous solid' or 'designated' wastes in ponded water from any source whatsoever is prohibited.
6. The discharge or deposit of waste to land not owned or controlled by the discharger is prohibited.
7. The codisposal of incompatible wastes or the disposal of wastes which are not compatible with containment structures is prohibited.

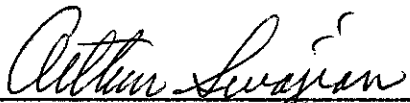
C. Provisions

1. The discharger shall maintain a copy of this Order at the site and make it available at all times to site operating personnel.

2. The discharger shall notify the Regional Board, in writing, of any proposed change in ownership or responsibility for construction or operation of the waste management facility. The discharger shall also notify the Regional Board of a material change in the character, location, or volume of the waste discharge and of any proposed expansions or closure plans. This notification shall be given six (6) months prior to the effective date of the change, and shall be accompanied by an amended Report of Waste Discharge and any technical documents that are needed to demonstrate continued compliance with these requirements.
3. The discharger shall comply with "Monitoring and Reporting Program No. 88-38" and future revisions thereto, as specified by the Regional Board's Executive Officer.
4. The discharger shall maintain legible records on the volume and type of each waste discharged at the site. These records shall be available for review by representatives of the Regional Board at any time during normal business hours. At the beginning of the post-closure maintenance period, copies of these records shall be sent to the Regional Board.
5. The discharger shall maintain monuments identifying the boundary limits of the entire waste management facility.
6. Within six months of the adoption of this Order, the discharger shall submit to the Regional Board and to the State Department of Health Services for review and approval, a report describing a periodic load-checking program to be implemented by the discharger to ensure that wastes prohibited by this Order are not discharged to the disposal site.
7. Within six months of the adoption of this Order, the discharger shall submit for review and approval by the Regional Board's Executive Officer, a closure and post closure maintenance plan in accordance with Section 2597 of Subchapter 15. The closure plan shall be updated annually and submitted to the Regional Board by the 15th day of January of each year.
8. The discharger shall immediately notify the Regional Board of any flooding, equipment failure, slope failure or other change in site conditions which could impair the integrity of waste or leachate containment facilities or flood control structures.
9. By August 1, 1988, the discharger shall submit to the Regional Board a plan and time schedule for submittal of the following:
 - a. A complete site characterization report (in compliance with Section 2595(f) Geology and (g) Hydrology, Article 9, Subchapter 15).
 - b. A proposal for a ground water monitoring system and a vadose zone monitoring system containing design plans (in compliance with Section 2596 (a)(3) of Article 9, Subchapter 15 for compliance with Article 5 of said Subchapter 15).
10. In the event of any change in ownership of the disposal site, the discharger shall notify the succeeding owner or operator in writing of the existence of this Order. A copy of this notification shall be sent to the Regional Board.

11. The discharger shall comply with all applicable provisions of said Subchapter 15 that are not specifically referred to in this Order.
12. The Board will review this Order periodically and will revise these requirements when necessary.
13. This Order supersedes Board Order No. 83-38.

I, Arthur Swajian, Executive Officer, do hereby certify the foregoing is a full, true and correct copy of an Order adopted by the California Regional Water Quality Control Board, Colorado River Basin Region on March 23, 1988.


Executive Officer

CALIFORNIA REGIONAL WATER QUALITY CONTROL BOARD
COLORADO RIVER BASIN REGION

MONITORING AND REPORTING PROGRAM NO. 88-38 (Revision No. 1)

FOR

COUNTY OF SAN BERNARDINO
MORONGO WASTE MANAGEMENT FACILITY
Morongo Valley - San Bernardino County

Location of Discharge: S½ of the NW¼ of Section 27, T1S, R4E, SBB&M

WASTE MONITORING

The discharger shall monitor all wastes discharged to the Class III landfill units and report to the Regional Board as follows:

<u>Parameter</u>	<u>Reporting Unit</u>	<u>Frequency</u>
1. Refuse discharged	Cubic Yards	Quarterly
2. Any waste discharged other than those allowed in the specifications	Type, Volume and exact location	Immediately upon becoming aware that the waste has been discharged
3. Capacity of landfill unit remaining	Percent	Annually

GROUND WATER MONITORING

The ground water monitoring wells shall be sampled quarterly during March, June, September and December except as noted. The samples shall be analyzed for the following:

<u>Parameters & Constituents</u>	<u>Units</u>	<u>Type of Sample</u>	<u>Frequency</u>
1. pH	number	Grab	Quarterly
2. TDS	mg/l	Grab	Quarterly
3. Specific Conductance	micromohs/cm	Grab	Quarterly
4. Temperature	°C	Grab	Quarterly
5. COD	mg/l	Grab	Quarterly
6. Calcium	mg/l	Grab	Quarterly
7. Magnesium	mg/l	Grab	Quarterly
8. Sulfate	mg/l	Grab	Quarterly
9. Sodium	mg/l	Grab	Quarterly
10. Nitrate	mg/l	Grab	Quarterly
11. Ground Water Elevations	feet (USGS Datum)	Meas.	Quarterly
12. Volatile Organics (EPA Methods 601, 602)	ug/l	Grab	Quarterly

The collection, preservation and holding times of all samples shall be in accordance with EPA-approved methods. All analyses shall be conducted by a laboratory certified by the State Department of Health Services to perform the required analyses.

REPORTING

1. Quarterly monitoring reports shall be submitted to the Regional Board by January 15, April 15, July 15, and October 15 of each year. Annual monitoring reports shall be submitted by January 15 of each year.
2. The discharger shall arrange the data in tabular form so that the specified information is readily discernible. The data shall be summarized in such a manner as to clearly illustrate whether the waste management facility is operating in compliance with waste discharge requirements.

Submit monitoring reports to:

California Regional Water Quality Control Board
Colorado River Basin Region
73-271 Highway 111, Suite 21
Palm Desert, CA 92260

ORDERED BY:

Phil Gruenberg
Executive Officer

9-11-89

Date

**CALIFORNIA REGIONAL WATER QUALITY CONTROL BOARD
COLORADO RIVER BASIN REGION**

MONITORING AND REPORTING PROGRAM NO. 88-38

FOR

**COUNTY OF SAN BERNARDINO
MORONGO WASTE MANAGEMENT FACILITY
Morongo Valley - San Bernardino County**

Location of Discharge: S 1/2 of the NW 1/4 of Section 27, T1S, R4E, SBB&M

WASTE MONITORING

The discharger shall monitor all wastes discharged to the Class III landfill units and report to the Regional Board as follows:

<u>Parameter</u>	<u>Reporting Unit</u>	<u>Frequency</u>
1. Refuse discharged	cubic yards	quarterly
2. Any waste discharged other than those allowed in the specifications	type, volume and exact location	immediately upon becoming aware that the waste has been discharged
3. Capacity of landfill unit remaining	percent	annually


REPORTING

Quarterly monitoring reports shall be submitted to the Regional Board by January 15, April 15, July 15, and October 15 of each year. Annual monitoring reports shall be submitted by January 15 of each year.

Mail reports to:

California Regional Water Quality Control Board
Colorado River Basin Region
73-271 Highway 111, Suite 21
Palm Desert, CA 92260

Ordered By:

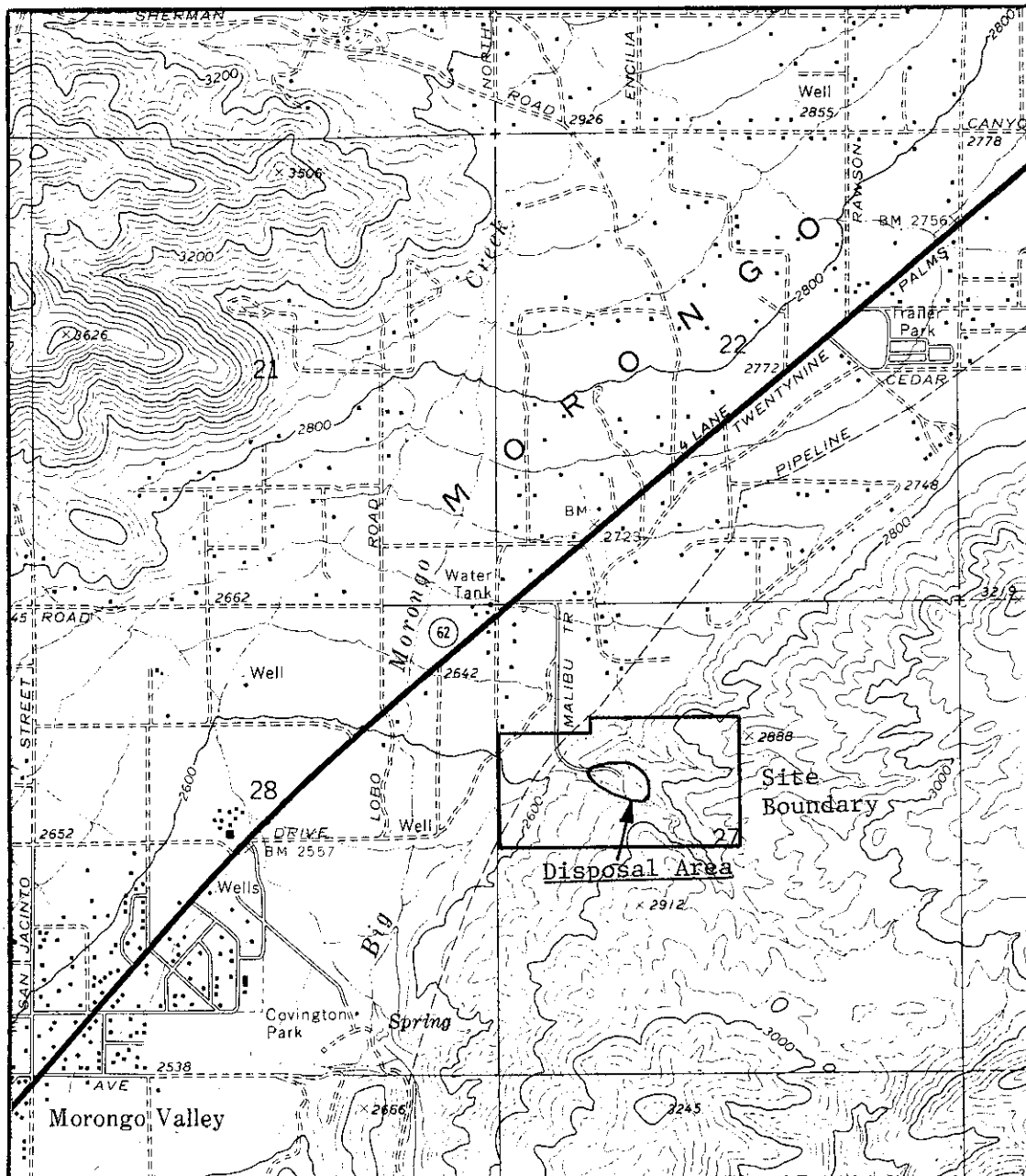

Executive Officer

March 23, 1988

Date

*Accepted
9/11/89*

CALIFORNIA REGIONAL WATER QUALITY CONTROL BOARD - 7

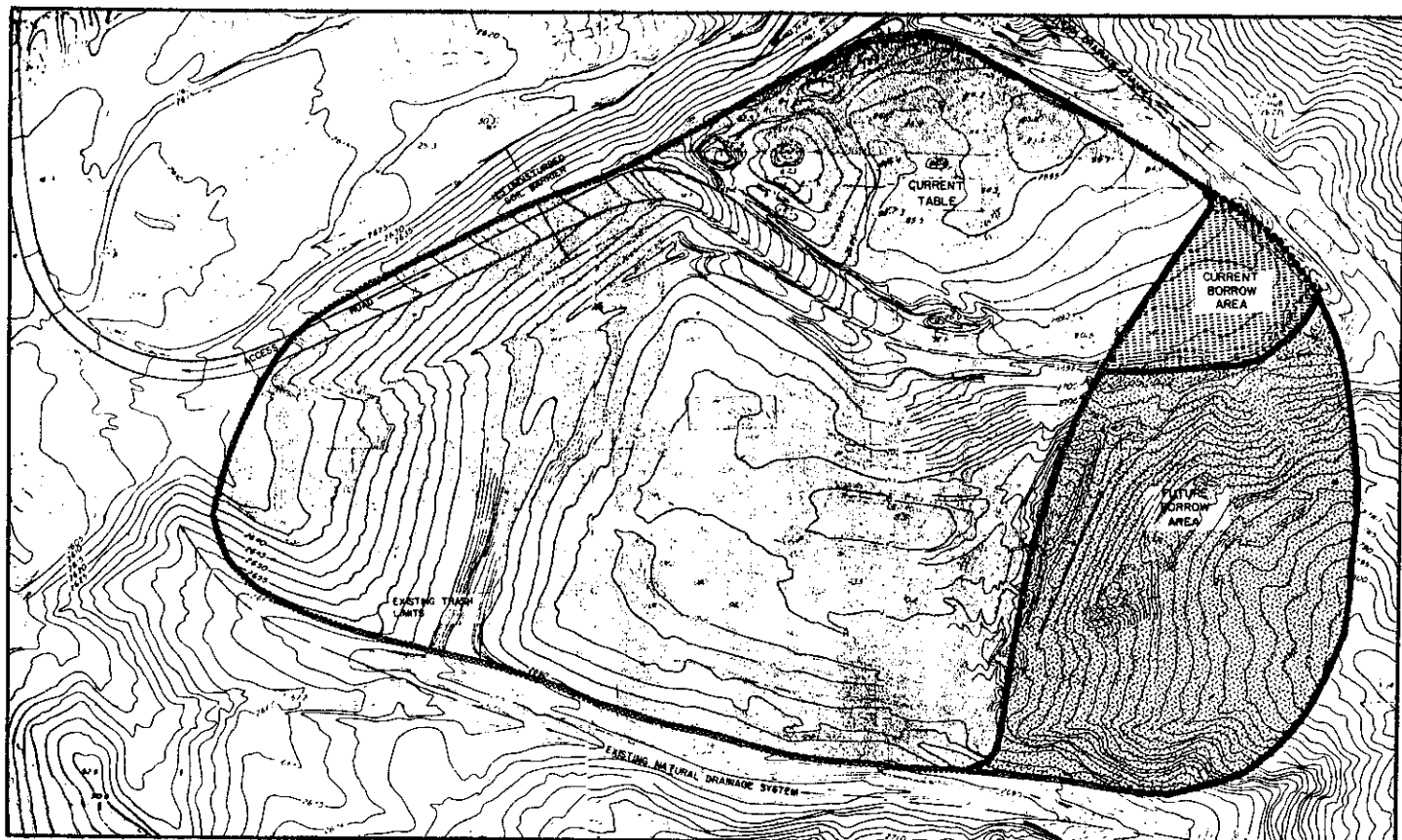


SITE MAP NO. 1

COUNTY OF SAN BERNARDINO
 MORONGO WASTE MANAGEMENT FACILITY
 Morongo Valley - San Bernardino County
 S 1/2 of the NW 1/4 of Section 27, T1S, R4E, SBB&M
 USGS Morongo Valley 7.5 min. Topographic Map

Order No. 88-38

CALIFORNIA REGIONAL WATER QUALITY CONTROL BOARD - 7



Scale: 1" = 125'



DISPOSAL AREA

SITE MAP NO. 1

COUNTY OF SAN BERNARDINO
MORONGO WASTE MANAGEMENT FACILITY
Morongo Valley - San Bernardino County

Order No. 88-38