

CALIFORNIA REGIONAL WATER QUALITY CONTROL BOARD
COLORADO RIVER BASIN REGION

ORDER NO. 88-127

WASTE DISCHARGE REQUIREMENTS
FOR
JULIAN UNION HIGH SCHOOL DISTRICT
Julian - San Diego County

The California Regional Water Quality Control Board, Colorado River Basin Region, finds that:

1. Julian Union High School District (hereinafter referred to as the discharger), P. O. Box 417, Julian, CA 92036, verified via the grounds superintendent the updated information below on the discharge of waste on July 19, 1988.
2. The discharger is discharging an average of 3,000 gallons-per-day of domestic sewage into a septic tank/leach line system that infiltrates through drain tile into an earthen oxidation basin. During dry periods, the wastewater is used for spray irrigation of adjacent pasture land grazed by horses and beef cattle. The treatment and disposal facilities are located in the NE 1/4 of the NW 1/4 of Section 5, T13S, R4E, SBB&M.
3. The discharge from this school has been subject to waste discharge requirements adopted in Board Order No. 83-64. The requirements are updated periodically by the Regional Board in accordance with Section 13263(e) of the California Water Code.
4. The discharger reports that there are two wells on the site, one approximately 110 feet east of the basin, which has been abandoned, and one about 500 feet northwest of the basin, which may be activated in the future for landscape irrigation. Any irrigation water would be contained on-site. Depth to water is reported to be about 275 feet.
5. The Water Quality Control Plan for the Colorado River Basin Region of California was adopted by the Regional Board on November 14, 1984.
6. The beneficial uses of ground water of the Anza-Borrego Hydrologic Unit are:
 - a. Municipal supply
 - b. Industrial supply
 - c. Agricultural supply

*Superseded
by Bd. Order
No. 92-027
5/13/92*

7. The Board has notified the discharger and interested agencies and persons of its intent to update waste discharge requirements for the discharge.
8. The Board in a public meeting heard and considered all comments pertaining to the existing discharge.
9. These waste discharge requirements govern existing facilities, which the discharger is currently operating, and therefore are exempt from the provisions of the California Environmental Quality Act in accordance with Section 15301 of Chapter 3, Title 14, of the California Code of Regulations.

IT IS HEREBY ORDERED, the discharger shall comply with the following:

A. Discharge Specifications

1. Neither the treatment nor the discharge of wastewater shall create pollution or nuisance as defined in Division 7 of the California Water Code.
2. No wastewater other than domestic sewage shall be discharged at this location.
3. A minimum freeboard of two (2) feet shall be maintained in the oxidation basin(s).
4. Adequate measures shall be taken to assure that unauthorized persons and animal pets are effectively excluded from contact with the discharge.
5. Adequate protective works shall be provided to assure that a flood, which would be expected to occur on a frequency of once in a 100 year period, would not erode or otherwise render portions of the treatment and discharge facilities inoperable.
6. Treated or untreated sludge, or similar solid waste materials, shall not be discharged to or enter any drainage channels.
7. There shall be no surface flow of wastewater away from the discharge facilities, and there shall be no surfacing downstream.
8. Treatment and disposal in the oxidation basin shall be conducted in such manner that there shall be no stranded or exposed sewage solids.
9. Treatment and discharge of wastewater shall be conducted by technical procedures which will maintain an aerobic environment.
10. Spray discharge of effluent shall not be conducted during periods of adverse climatic conditions (such as strong winds, rain, or when the ground is frozen or saturated), and adequate effluent storage

facilities shall be provided to achieve compliance with this requirement.

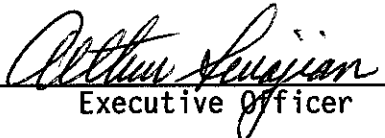
11. Sewage effluent to be discharged by spray irrigation shall contain at least 2 mg/l of dissolved oxygen.
12. Sludge from septic tanks shall be discharged only by a duly authorized service.

B. Provisions

1. Prior to any modifications in this facility which would result in material change in the quality or quantity of wastewater discharged, or any material change in location of discharge, the discharger shall report in writing to the Regional Board.
2. The discharger shall comply with "Monitoring and Reporting Program No. 88-137", and future revisions thereto, as specified by the Executive Officer.
3. In the event of any change in operation, or in control or ownership of land or waste disposal facilities owned or controlled by the discharger, the discharger shall:
 - a. Notify this Board of such change; and
 - b. Transmit a copy of this Order to the succeeding owner or operator, and file a copy of the transmittal letter with this Board.

IT IS FURTHER ORDERED THAT: Board Order No. 83-64 be superseded by this Order.

I, Arthur Swajian, Executive Officer, do hereby certify the foregoing is a full, true and correct copy of an Order adopted by the California Regional Water Quality Control Board, Colorado River Basin Region, on November 30, 1988.


Executive Officer

CALIFORNIA REGIONAL WATER QUALITY CONTROL BOARD
COLORADO RIVER BASIN REGION

MONITORING AND REPORTING PROGRAM NO. 88-127
FOR
JULIAN UNION HIGH SCHOOL DISTRICT
Julian - San Diego County

Location of Discharge: Portion of NE 1/4, NW 1/4 of Section 5, T13S, R4E, SBB&M

MONITORING

The discharger shall submit the following information in an annual status report:

1. Estimate of average daily flow (gpd) of sewage discharged to basin(s).
2. Estimate of maximum number of persons presently discharging to the sewerage system.
3. List of any proposed changes during the coming year.
4. Explain any problems in the sewerage system during the preceding year.
5. Sewage effluent shall be monitored for dissolved oxygen prior to discharge by spray irrigation, and recorded for each day of discharge.


REPORTING

1. Monitoring reports shall be submitted to the Regional Board annually by January 15th of each year to:

California Regional Water Quality Control Board
Colorado River Basin Region
73-271 Highway 111, Suite 21
Palm Desert, CA 92260

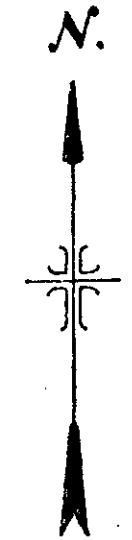
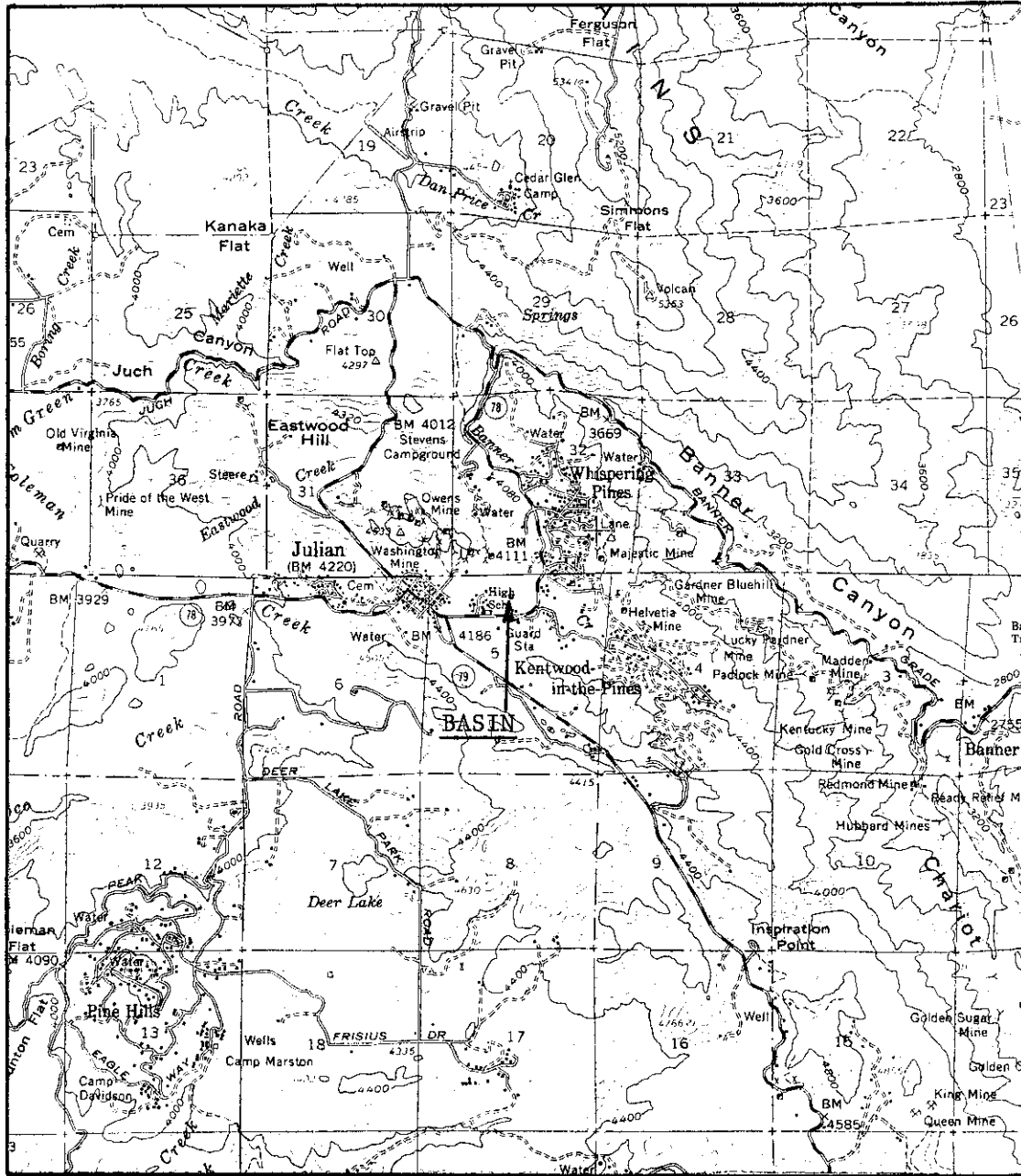
2. Report immediately any failures of the system by telephone and follow-up by letter.
3. Report immediately by telephone prior to discharging by spray irrigation if the dissolved oxygen level is less than 2 mg/l.

ORDERED BY:


Executive Officer

November 30, 1988
Date

CALIFORNIA REGIONAL WATER QUALITY CONTROL BOARD - 7



Scale:
1"=1 mile

SITE MAP

JULIAN UNION HIGH SCHOOL DISTRICT
 Julian - San Diego County
 Portion of NE $\frac{1}{4}$, NW $\frac{1}{4}$ of Section 5, T13S, R4E, SBB&M
 USGS Santa Ysabel 15 min. Topographic Map

Order No. 88-127