

**CALIFORNIA REGIONAL WATER QUALITY CONTROL BOARD
COLORADO RIVER BASIN REGION**

ORDER NO. 88-5

**WASTE DISCHARGE REQUIREMENTS
FOR
COUNTY OF IMPERIAL
PICACHO WASTE MANAGEMENT FACILITY**

North of Winterhaven—Imperial County

The California Regional Water Quality Control Board, Colorado River Basin Region, finds that:

1. County of Imperial (hereinafter also referred to as the discharger) 155 South 11th Street, El Centro, California, 92243, submitted a Report of Waste Discharge dated October 7, 1987 to update the waste discharge requirements for the existing disposal facility.
2. The disposal facility has been subject to waste discharge requirements under Board Order No. 75-28. The waste discharge requirements are being updated to comply with Section 13263 of the California Water Code, and to incorporate the applicable provisions of Subchapter 15, Chapter 3, Title 23 of the California Administrative Code.
3. The 50-acre disposal site is owned by the Quechan Indian Tribe, under administration by the U.S. Department of Interior, Bureau of Indian Affairs, and is operated by the Imperial County Department of Public Works. Waste disposal activities are currently limited to 5 acres of the site. Life expectancy of the site is about 23 years, based on remaining capacity of 1,163,000 cubic yards. The site is located 4 ½ miles north of Winterhaven in the NE ¼ of Section 35, T15S, R22, SBB&M.
4. The discharger operates the site as a landfill. The site presently receives the waste material listed below at a discharge rate of 6,500 cubic yards per year:
 - a. Residential refuse
 - b. Commercial refuse
 - c. Construction/demolition wastes
 - d. Empty pesticide containers

These wastes are classified as nonhazardous solid waste using the criteria set forth in said Subchapter 15.

5. The total capacity of the disposal site is approximately 1,291,000 cubic yards. A cut and cover operation is utilized at the site. Cells are excavated to a depth of approximately 20 feet below the natural surface, with the excavated material used in the cover sequence. Waste is unloaded into a cell approximately 30 feet by 250 feet minimum, then pushed up to the total cell depth (20 feet) on to a working face at an angle permitting the dozers to achieve maximum compaction. Empty pesticide containers are required to be triple-rinsed and rendered unusable prior to acceptance at the site, and are placed in a separate fenced cell. A site attendant is present at specific posted times to accept pesticide containers.
6. The elevation of the site is approximately 350 feet USGS datum'. Natural drainage patterns

divert storm water around and away from the site. To the east of the site is an unnamed wash which drains southward ultimately to the Colorado River.

7. Land within 1000 feet of the site is zoned "open space". The surrounding area is natural desert.
8. Soil underlying the site is recent alluvium consisting of gravel, sand and clay. No test boring data is available.
9. No information on ground waters in the area is available because of a lack of wells. The ground water level at the site is probably controlled by the elevation of the All American Canal located about one mile to the southeast, and thus is about 100 feet below ground surface.
10. Annual averages for evaporation and precipitation in the area are 80 inches and 2.92 inches, respectively.
11. The 100-year, 24-hour precipitation event for the site is 3.13 inches.
12. The site is not within the 100-year floodplain.
13. There are no known earthquake faults underlying the site.
14. The Water Quality Control Plan for the Colorado River Basin Region was adopted by the Regional Board on November 14, 1984. The Basin Plan delineates the location of discharge to be in the Yuma Hydrologic Unit.
15. The beneficial uses of the groundwater of the Yuma Hydrologic Unit are municipal and agricultural supply.
16. The Board has notified the Discharger and interested agencies and persons of its intent to update the waste discharge requirements for this facility
17. The Board, in a public hearing, heard and considered all comments pertaining to the facility.
18. These waste discharge requirements govern an existing facility which the discharger is currently operating and therefore is exempt from the provisions of the California Environmental Quality Act in accordance with Section 15301, Chapter 3, Title 14 of the California Administrative Code.

IT IS HEREBY ORDERED, that in order to meet the provisions of Division 7 of the California Water Code and regulations adopted thereunder, the discharger shall comply with the following:

A. Discharge Specifications:

1. The treatment or disposal of waste shall not cause pollution, or a nuisance as defined in Section 13050 of the California Water Code.
2. Waste material shall be confined to the waste management facility as shown on the attached topographic map.
3. The discharge shall not cause degradation of any water supply.

4. The landfill units shall be designed, constructed, operated and maintained to prevent inundation or washout due to floods with a 100-year return frequency.
5. Surface drainage from tributary areas, and internal site drainage from surface or subsurface sources, shall not contact or percolate through the wastes discharged at this site.
6. The exterior surfaces of the disposal area including the intermediate and final landfill covers shall be graded and maintained to promote lateral runoff of precipitation and to prevent ponding.
7. The discharger shall provide a final cover for closure of landfills in conformance to the requirements of said Subchapter 15,
8. Water used during disposal site operations shall be limited to a minimal amount reasonably necessary for dust control purposes.
9. The discharger shall remove and relocate any wastes which are discharged at this site in violation of these requirements.
10. Only pesticide containers which are empty, triple-rinsed and punctured may be discharged at the site. The pesticide containers shall be discharged in separate disposal cells constructed apart from other waste management units unless otherwise approved by the Regional Board's Executive Officer. The pesticide container disposal area shall be enclosed and secured to prevent unauthorized access.

B. Prohibitions

1. The discharge or deposit of hazardous waste (as defined in Subchapter 15) at this site is prohibited.
2. The discharge or deposit of designated waste (as defined in Subchapter 15) at this site is prohibited unless otherwise approved by the Executive Officer.
3. The discharge of liquid or semi-solid waste (i.e., waste containing less than 50 percent solids) to the landfill units is prohibited.
4. The discharge of solid or liquid waste or leachate to surface waters, surface water drainage courses or to ground water is prohibited.
5. The discharge or deposit of waste to land not owned or controlled by the discharger is prohibited.
6. The codisposal of incompatible wastes is prohibited.

C. Provisions:

1. The discharger shall maintain a copy of this Order and make it available at all times to site operating personnel.

2. The discharger shall notify the Regional Board, in writing, of any proposed change in ownership or responsibility for construction or operation of the waste management facility. The discharger shall also notify the Regional Board of a material change in the character, location, or volume of the waste discharge and of any proposed expansion or closure plans. This notification shall be given six (6) months prior to the effective date of the change and shall be accompanied by an amended Report of Waste Discharge and any additional supporting information as requested by the Executive Officer.
3. The discharger shall comply with "Monitoring and Reporting Program No. 88-5", and future revisions thereto, as specified by the Regional Board's Executive Officer.
4. -1. The discharger shall maintain legible records on the volume and type of each waste discharged at the site. These records shall be available for review by representatives of the Regional Board at any time during normal business hours. At the beginning of the post-closure maintenance period, copies of these records shall be sent to the Regional Board.
5. The discharger shall maintain survey monuments indicating the boundary.
6. Within six months of the adoption of this Order, the discharger shall submit to the Regional Board, through the State Department of Health Services for review and approval, a report describing a periodic load-checking program to be implemented by the discharger to ensure that hazardous waste management units and designated wastes are not released to the environment.
7. Within six months of the adoption of this Order, the discharger shall submit for review and approval by the Regional Board's Executive Officer, a closure and post-closure maintenance plan in accordance with Section 2597 of Subchapter 15. The closure plan shall be updated annually, and submitted to the Regional Board by the 15th day of January of each year.
8. The discharger shall immediately notify the Regional Board of any flooding, or other change in site conditions which could impair the integrity of waste containment facilities or of precipitation and drainage control structures.
9. By June 1, 1988, the discharger shall submit to the Regional Board a plan and time schedule for the submittal of the following:
 - a. Complete site characterization report (i.e., Section 2595(f) and (g) of Subchapter 15: Geology and Hydrology).
 - b. A proposal for, and design of, a groundwater monitoring system and vadose zone monitoring system as feasible (i.e. Section 2596(a)(3): compliance with Article 5 of Subchapter 13).
10. In the event of any change in ownership of the disposal site, the discharger shall notify the succeeding owner or operator in writing of the existence of this Order. A copy of that notification shall be sent to the Regional Board.
11. The discharger shall comply with all applicable provisions of Subchapter 15 that are not specifically referred to in this Order.

12. This Order supersedes Board Order No. 83-17.

This is a true and correct copy of an Order adopted by the California Regional Water Quality Control Board, Colorado River Basin Region, on January 1, 1988

Original signed by
Executive Officer

Date

**CALIFORNIA REGIONAL WATER QUALITY CONTROL BOARD
COLORADO RIVER BASIN REGION**

MONITORING AND REPORTING PROGRAM NO. 88-5

FOR
COUNTY OF IMPERIAL
PICACHO WASTE MANAGEMENT FACILITY
North of Winterhaven—Imperial County

WASTE MONITORING

The discharger shall monitor the wastes discharged to the disposal site units in order to report to the Regional Board the following:

<u>Parameter</u>	<u>Reporting Unit</u>	<u>Frequency</u>
1. Refuse discharged	cubic yards	quarterly
2. Pesticide containers discharged	cubic yards	quarterly
3. Any wastes discharged other than those allowed in the specifications	type, volume and exact location	immediately upon becoming aware that the waste has been discharged
4. Landfill capacity remaining	percent	annually

REPORTING

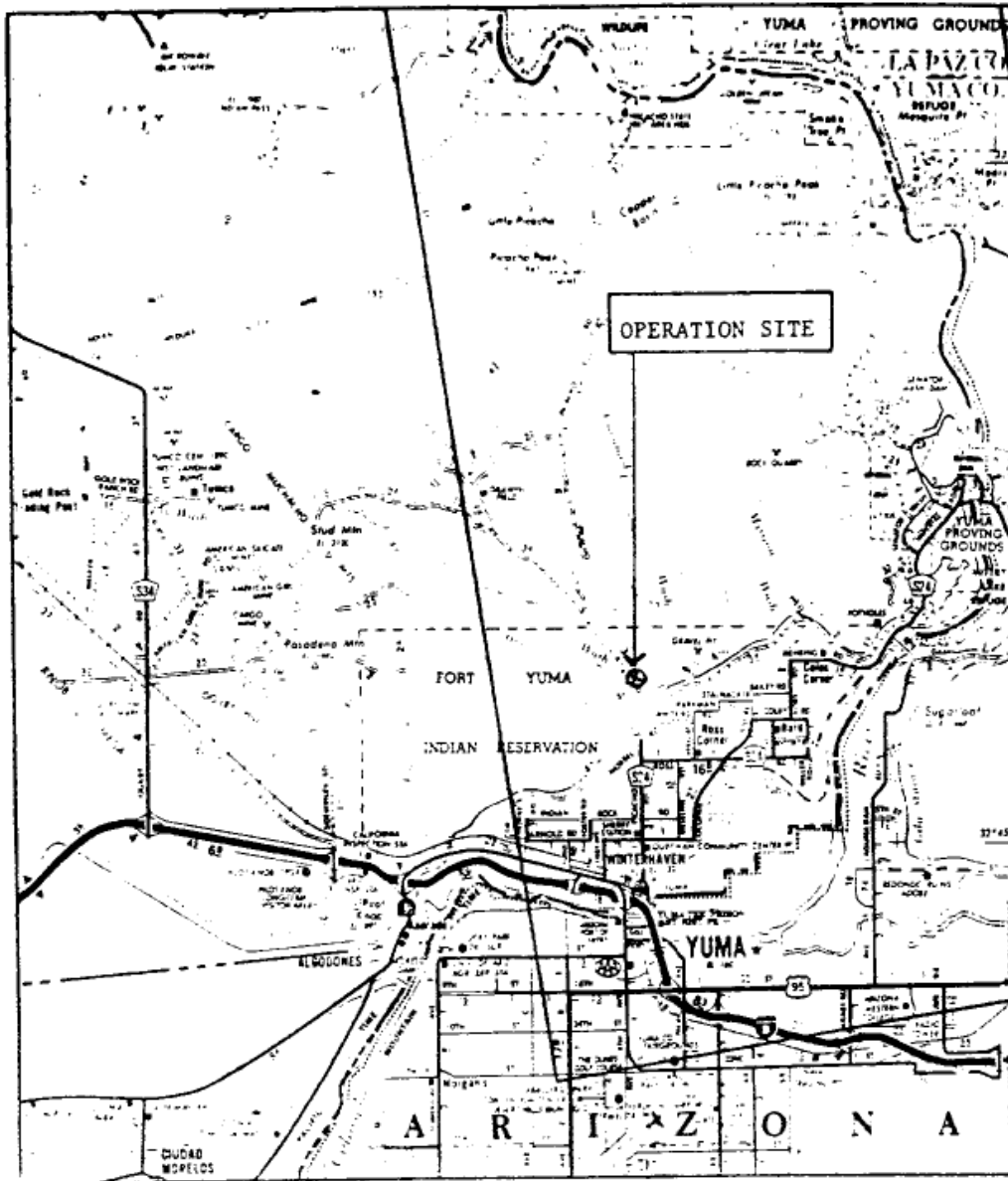
Quarterly monitoring reports shall be submitted to the Regional Board by January 15, April 15, July 15, and October 15 of each year. Annual monitoring reports shall be

Mail reports to:
California Regional Water Quality Control Board
Colorado River Basin Region
73-271 Highway 111, Suite 21
Palm Desert, CA 92260

ORDERED BY: _____

DATE

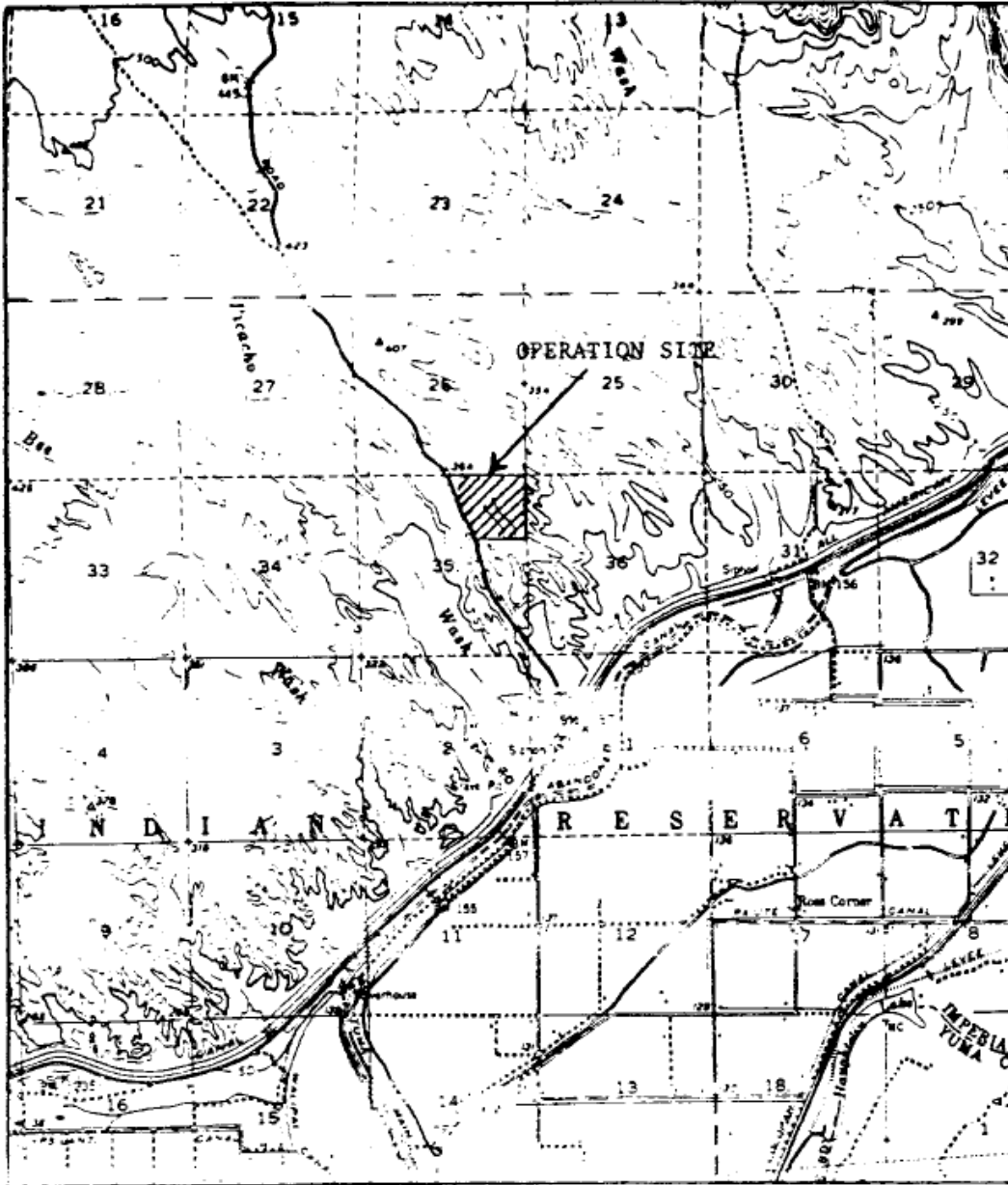
CALIFORNIA REGIONAL WATER QUALITY CONTROL BOARD -7



SITE MAP NO. 1

COUNTY OF IMPERIAL
PICA.CHO WASTE MANAGEMENT FACILITY
North of Winterhaven—Imperial County

CALIFORNIA REGIONAL WATER QUALITY CONTROL BOARD - 7



SITE MAP NO. 2

SITE MAP NO. 2
COUNTY OF IMPERIAL
PICACHO WASTE MANAGEMENT FACILITY
North of Winterhaven—Imperial County
NE of Section 35, T15S, R22E, SBB&M
USGS Picacho Peak Area 15 min. Topographic Map