

**CALIFORNIA REGIONAL WATER QUALITY CONTROL BOARD
COLORADO RIVER BASIN REGION**

ORDER NO. 83-80

**WASTE DISCHARGE REQUIREMENTS
FOR
COUNTY OF SAN DIEGO
BORREGO SPRINGS SOLID WASTE DISPOSAL SITE
Borrego Springs Area - San Diego County**

The California Regional Water Quality Control Board, Colorado River Basin Region, finds that:

1. County of San Diego, Department of Public Works, Solid Waste Division (0383) (hereinafter also referred to as the discharger), 5555 Overland Avenue, Bldg. 1, San Diego, CA 92123, submitted current information dated May 10, 1983 to update waste discharge requirements for the existing site.
2. The discharger is discharging Group 2 and Group 3 wastes in the NW $\frac{1}{4}$, SW $\frac{1}{4}$, Section 6, T11S, R7E, SBB&M. This property is owned by the County of San Diego, Solid Waste Enterprise Fund, 5555 Overland Avenue, Bldg. 1, San Diego, CA 92123 and operated by the County of San Diego, Department of Public Works, Solid Waste Division.
3. The discharger operates the site as a landfill.

The site receives approximately 235 tons-per-month of Group 2 and Group 3 solid wastes including:

- a. Residential refuse
 - b. Commercial refuse
 - c. Construction/demolition wastes
 - d. Agricultural wastes
4. The total capacity of the site is 209,000 tons with 164,700 tons remaining. It has an estimated remaining life of 30+ years. Total site area is approximately 40 acres.
 5. This site is underlain by recent alluvium. Well No. 11S/6E - 1B1, one-half mile northwest of the site reported a depth of 300 feet and a TDS of 696 mg/l in February of 1953. Well No. 11S/6E - 1C1 reported a depth of 29 feet in 1953 and a depth of 59 feet and a TDS of 624 mg/l in November 1980.
 6. The beneficial uses of ground waters in the Borrego Hydrologic Subarea are:
 - a. Municipal Supply
 - b. Agricultural Supply
 - c. Domestic Supply

*replaced
by 89-021*

7. Land within 1,000 feet of this site is zoned for residential use, civic (essential services and fire protection services) use, and agricultural use. It is at present natural desert. The nearest dwelling is 4 miles to the west.
8. The site is protected by an estimated 20 foot high diversion dike. The dike has two arms, one parallel to the wash and the other extending in a southeasterly direction protecting the northeast side of the site (as shown on Attachment "A"). The County reports the structure will provide a 300 percent safety factor for a 100 year storm. In addition, the County has erected a fence to catch blowing papers. An operator is present during operating hours, and toilet facilities and potable water are available at the site.
9. The Water Quality Control Plan for the West Colorado River Basin was adopted April 10, 1975. The Basin Plan contains water quality objectives for the Borrego Hydrologic Subarea, and this Order implements those objectives.
10. This disposal site meets the criteria contained in the California Administrative Code, Chapter 3, Subchapter 15, for classification as a Class II-2 disposal site suitable to receive Group 2 and Group 3 wastes.
11. This discharge has been subject to waste discharge requirements adopted in Board Order No. 72-10.
12. The Board has notified the discharger and interested persons and agencies of its intent to update waste discharge requirements for this site.
13. The Board in a public meeting heard and considered all comments pertaining to the existing discharge.
14. The disposal site constitutes an ongoing project in accordance with the provisions of the California Environmental Quality Act (Public Resources Code Section 21000 et. seq.), and Title 14, California Administrative Code, Article 6.5, Section 15070, because the governmental approvals on or after April 15, 1973 do not involve a greater degree of responsibility or control over such activity than the governmental approvals received prior to that date.

IT IS HEREBY ORDERED, the discharger shall comply with the following:

A. Discharge Specifications

1. The treatment or disposal of wastes shall not cause pollution or a nuisance as defined in Sections 13050 (l) and 13050 (m) of the California Water Code.
2. Waste materials shall not be discharged outside the designated disposal area shown on Attachment "A".

3. Surface drainage from tributary areas and internal site drainage from surface or subsurface sources shall not contact or percolate through Group 2 wastes discharged at this site.
4. Group 2 wastes shall not be discharged on any surface which is less than six feet above the highest anticipated ground water level.
5. No Group 2 wastes shall be placed in ponded water from any source whatsoever.
6. There shall be no discharge of liquids unless approved by the Executive Officer.
7. The disposal area shall be protected from any washout or erosion of wastes or covering material and from any inundation which could occur as a result of floods having a predicted frequency of once in 100 years.
8. The exterior surfaces of the disposal area shall be graded to promote lateral runoff of precipitation and to prevent ponding.
9. The discharger shall remove and relocate any wastes which are discharged at this site in violation of these requirements.

B. Prohibitions

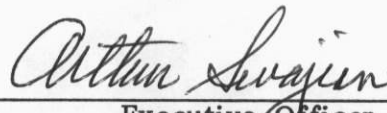
1. The discharge of wastes to any surface drainage course is prohibited.
2. Group 1 wastes shall not be discharged at this site.

C. Provisions

1. The discharger shall file an updated operation plan with this Board when substantial changes in operations have been made. For the purpose of these requirements, this includes any proposed change in the boundaries or contours of the site. A letter indicating conformance with existing plans and requirements shall be submitted annually. Said plan and letter shall be pursuant to the California Administrative Code, Title 23, Subchapter 15, Section 2552.
2. Prior to three years from closure of the total site, the discharger shall file a Site Closure and Maintenance Report with this Board pursuant to California Administrative Code, Title 23, Subchapter 5, Section 2553.
3. Site Closure and Maintenance Reports shall conform to minimum closure requirements set forth in the California Administrative Code, Title 23, Subchapter 15, Section 2553.2.
4. The discharger shall comply with "Monitoring and Reporting Program No. 83-80", and future revisions thereto, as specified by the Executive Officer.

5. The discharger shall maintain monuments identifying the limits of the disposal site and of each solid waste disposal area within the site.
6. The discharger shall maintain a copy of this Order available at all times to site operating personnel.
7. This Board considers the property owner to have a continuing responsibility for correcting any problems which may arise in the future as a result of waste discharge or water applied to this property during subsequent use of the land for other purposes. In the event of any change in ownership of the disposal site, or change of operations, the discharger shall:
 - a. Notify this Board of such a change; and
 - b. Notify the succeeding owner or operator of the existence of this Order by letter, a copy of which shall be filed with this Board.
8. This Order supersedes this Board Order No. 72-10.

I, Arthur Swajian, Executive Officer, do hereby certify the foregoing is a full, true and correct copy of an Order adopted by the California Regional Water Quality Control Board, Colorado River Basin Region, on September 21, 1983.



Executive Officer

CALIFORNIA REGIONAL WATER QUALITY CONTROL BOARD
COLORADO RIVER BASIN REGION

MONITORING AND REPORTING PROGRAM NO. 83-80
FOR
COUNTY OF SAN DIEGO
BORREGO SPRINGS SOLID WASTE DISPOSAL SITE
Borrego Springs Area - San Diego County

Location of Discharge: NW $\frac{1}{4}$, SW $\frac{1}{4}$, Section 6, T11S, R7E, SBB&M

MONITORING

The discharger shall report to the Regional Board concerning the following:

<u>Item</u>	<u>Unit</u>	<u>Reporting Frequency</u>
1. Refuse discharged at solid waste disposal site	Cu. Yd./Quarter	Quarterly
2. Any discharge of wastes other than those allowed in the specifications	Type, volume and exact location	Immediately upon becoming aware that the waste has been discharged

REPORTING

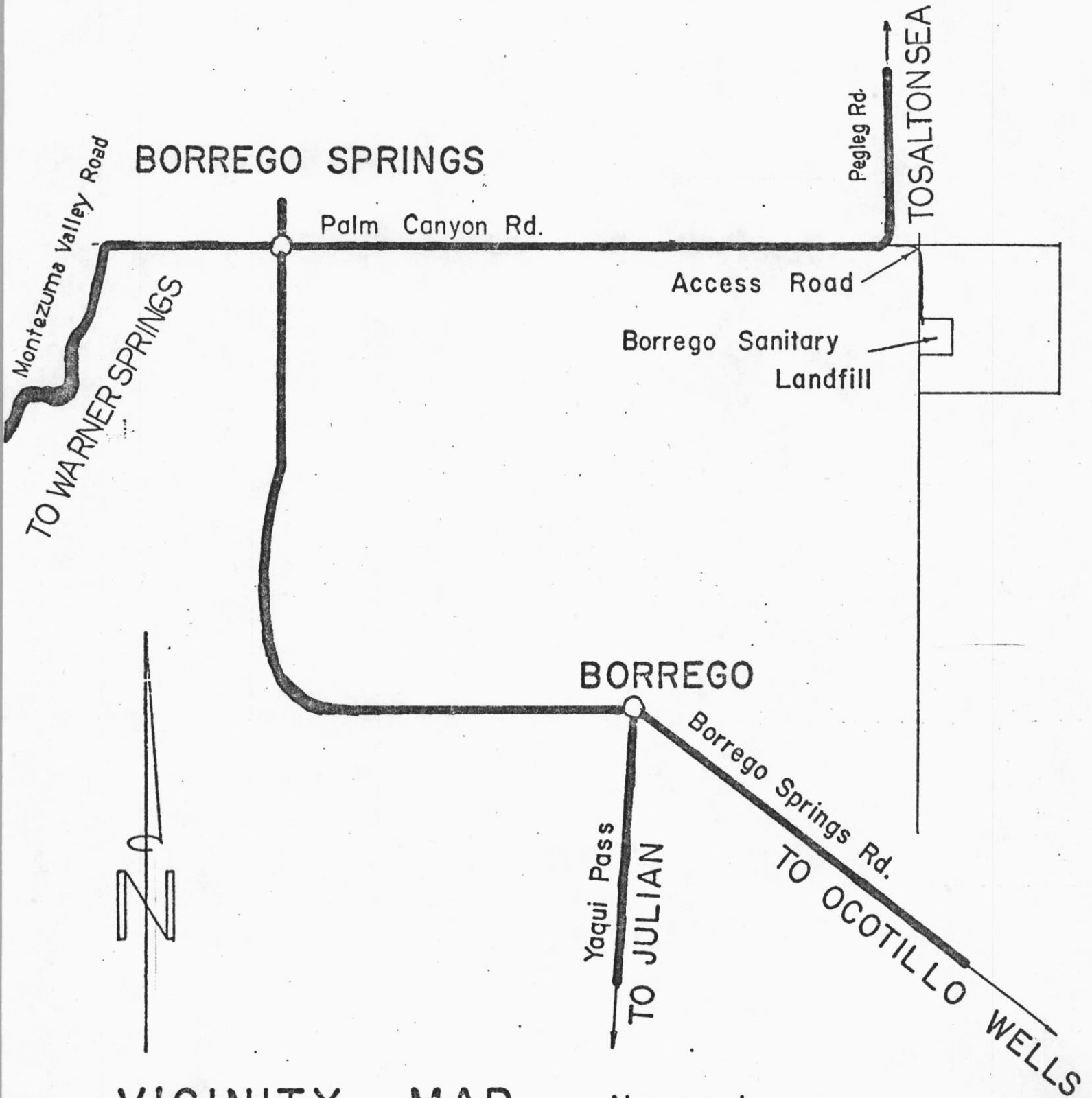
Quarterly monitoring reports shall be submitted to the Regional Board by January 15, April 15, July 15, and October 15 of each year.

Submit monitoring reports to:

California Regional Water Quality Control Board
Colorado River Basin Region
73-271 Highway 111, Suite 21
Palm Desert, CA 92260

ORDERED BY:

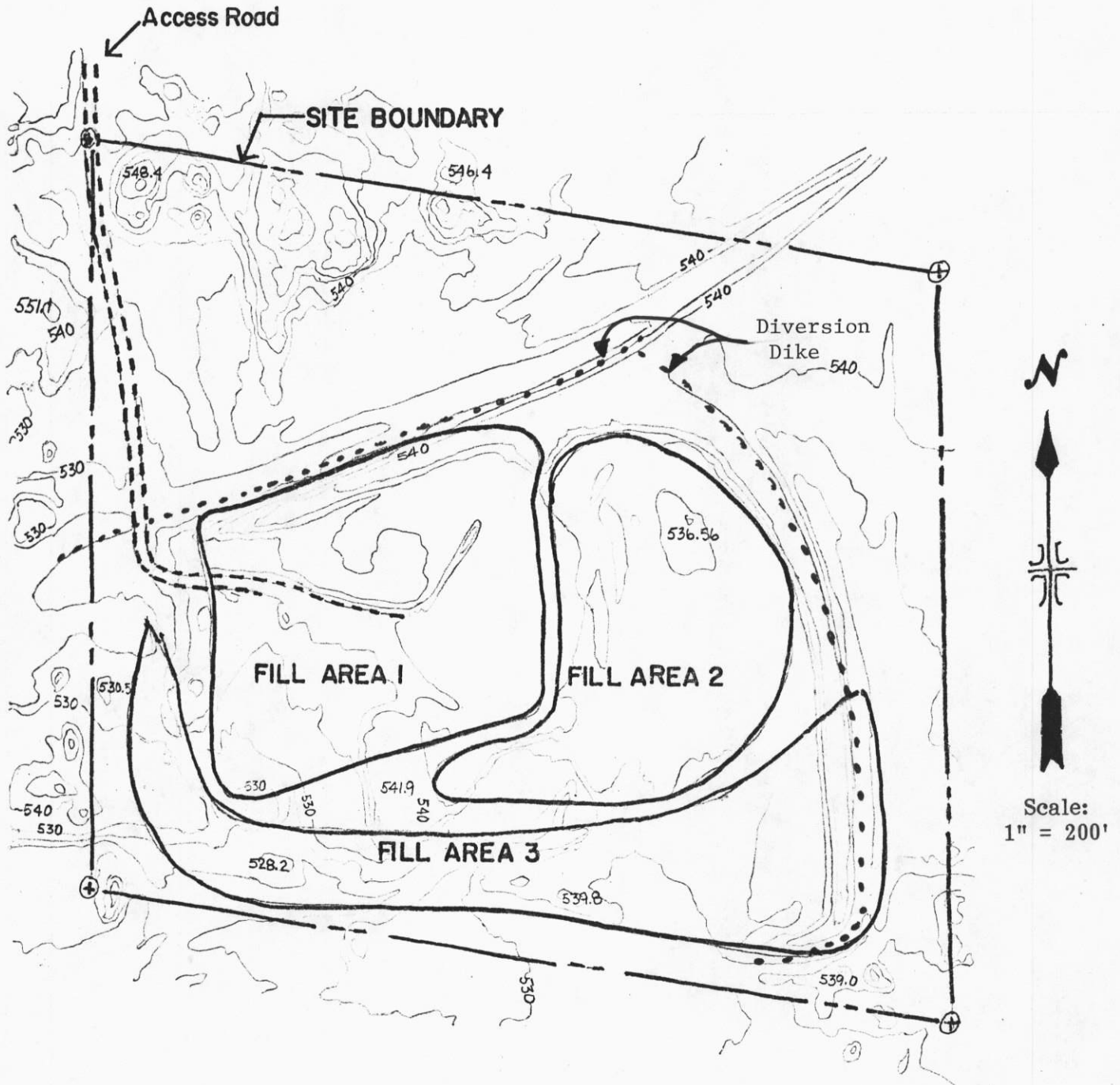
Arthur Sevajan
Executive Officer
Oct. 4, 1983
Date



VICINITY MAP No scale

SAN DIEGO COUNTY
BORREGO SPRINGS SOLID WASTE DISPOSAL SITE

CALIFORNIA REGIONAL WATER QUALITY CONTROL BOARD - 7



Scale:
1" = 200'

ATTACHMENT "A"

COUNTY OF SAN DIEGO
BORREGO SPRINGS SOLID WASTE DISPOSAL SITE
NW $\frac{1}{4}$, SW $\frac{1}{4}$, Section 6, T11S, R7E, SBB&M

Order No. 83-80

19-8