

CALIFORNIA REGIONAL WATER QUALITY CONTROL BOARD
COLORADO RIVER BASIN REGION

ORDER NO. 78-65

WASTE DISCHARGE REQUIREMENTS
FOR

SANS END MOBILE HOME AND TRAVEL TRAILER PARK
Winterhaven - Imperial County

The California Regional Water Quality Control Board, Colorado River Basin Region, finds that:

1. Charles A. Nelson (hereinafter also referred to as the discharger), Rt. 1, 1195 Bard Rd., Winterhaven, California 92283, submitted an updated report of waste discharge dated May 6, 1978.
2. The discharger currently discharges wastewater from 32 mobile home spaces, a recreation hall and 11 apartments by means of subsurface disposal facilities consisting of septic tanks and leach lines located in the SE $\frac{1}{4}$ of the NW $\frac{1}{4}$ of Section 27, T16S, R22E, SBB&M. The discharger proposes to discharge sewage from an additional 90 travel trailer spaces by the same method and at the same location. The total average discharge from the park would be about 24,000 gallons-per-day.
3. The discharger has reserved areas of sufficient size for 100% replacement of each of the leach fields. These areas are designated on Attachment "A" incorporated herein and made a part of this Order.
4. The discharge from this mobile home and travel trailer park has been subject to waste discharge requirements adopted in Board Order No. 75-24.
5. The Water Quality Control Plan for the East Colorado River Basin was adopted by the Board on April 10, 1975. The Basin Plan contains water quality objectives for Yuma Hydrologic Unit.
6. The beneficial uses of the groundwaters of the Yuma Hydrologic Unit are:
 - a. Municipal supply
 - b. Agricultural supply
7. The Bureau of Indian Affairs has prepared a Negative Declaration (filing date February 19, 1976) for the development of this mobile home and travel trailer park. This assessment states that this project will not have any significant adverse effects on the environment.

Superseded by
86-41
1/22/86

8. The Board has notified the discharger and interested agencies and persons of its intent to prescribe waste discharge requirements for the discharge.
9. The Board in a public meeting heard and considered all comments pertaining to the discharge.

IT IS HEREBY ORDERED, the discharger shall comply with the following:

A. Discharge Specifications

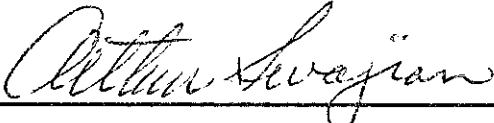
1. Neither the treatment nor the discharge of wastewater shall create a pollution or a nuisance as defined in Division 7 of the California Water Code.
2. No wastewater other than domestic sewage shall be discharged at this location.
3. Wastewater discharged subsurface shall be retained underground with no surfacing.
4. There shall be no discharge of sewage within 200 feet of any domestic water well.
5. Adequate measures shall be taken to assure that flood or surface drainage waters do not erode or otherwise render portions of the discharge facilities inoperable.
6. Septic tank cleanings shall be discharged only by a duly authorized service.

B. Provisions

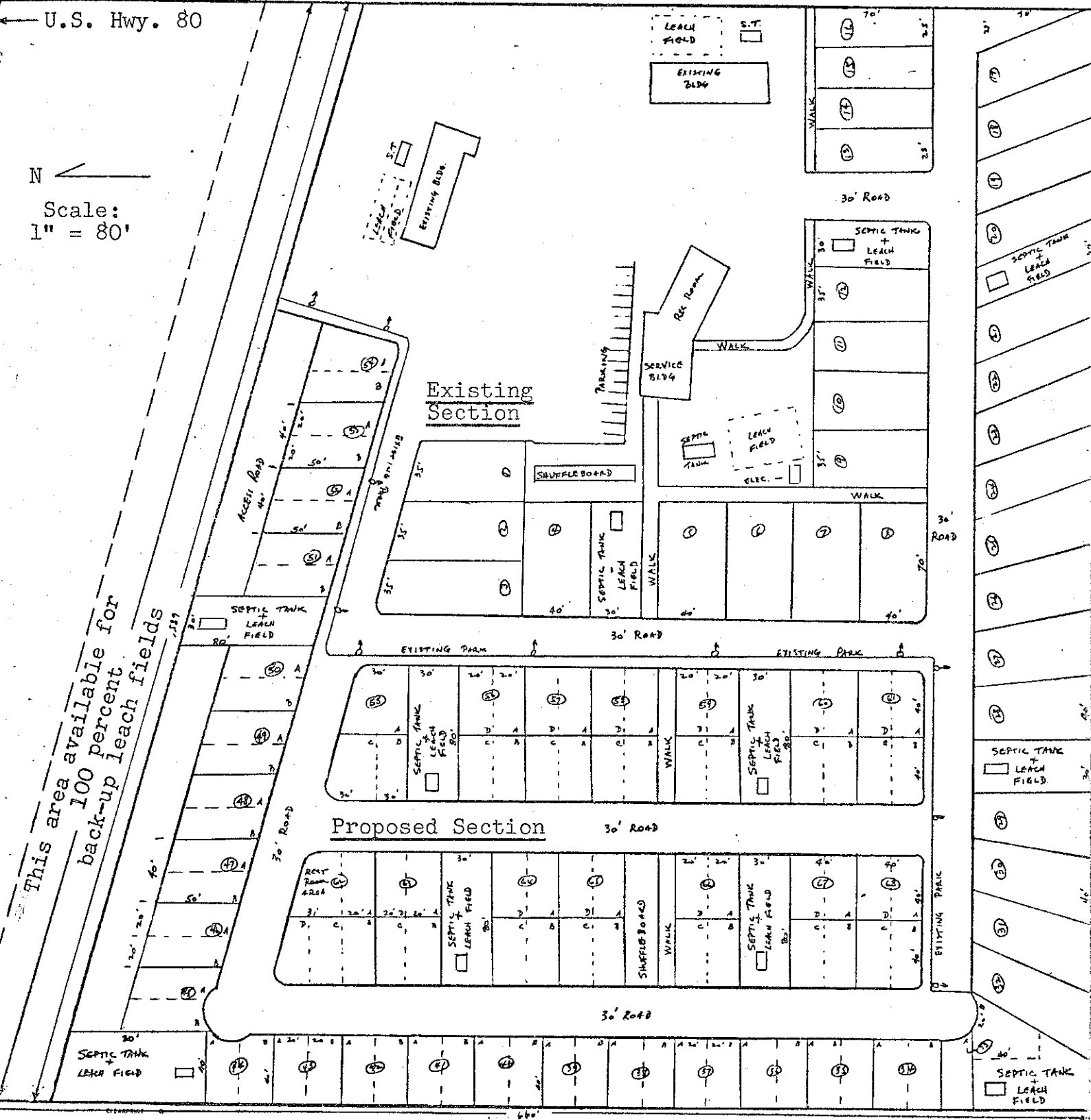
1. The areas reserved for 100% replacement of the leach fields, as shown on Attachment "A", shall at all times be retained servient to this mobile home and travel trailer park, for the purpose of providing additional subsurface sewage disposal capacity, until such time as this park is connected to a municipal sewerage system.
2. Upon request from this Board's Executive Officer, the discharger shall furnish technical and/or monitoring reports on the treatment and discharge of waste.
3. Prior to any modifications in this facility which would result in material change in the quality or quantity of wastewater discharged, or any material change in location of discharge, the discharger shall report in writing to the Regional Board.

4. Prior to any future change of ownership of this mobile home and travel trailer park, the discharger shall:
 - a. Specify as a condition of transfer that said sewage disposal areas must remain servient to the park, for the purpose of providing subsurface sewage disposal capacity, until such time as this park is connected to a municipal sewerage system.
 - b. Notify the succeeding owner, in writing, of the existence of this Order, and forward a copy of said correspondence to the Regional Board.
5. This Order supersedes Board Order No. 75-24.

I, Arthur Swajian, Executive Officer, do hereby certify the foregoing is a full, true, and correct copy of an Order adopted by the California Regional Water Quality Control Board, Colorado River Basin Region, on July 12, 1978.



Executive Officer

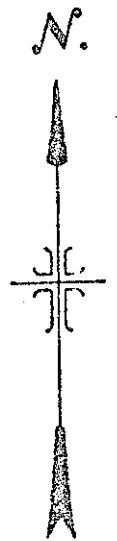
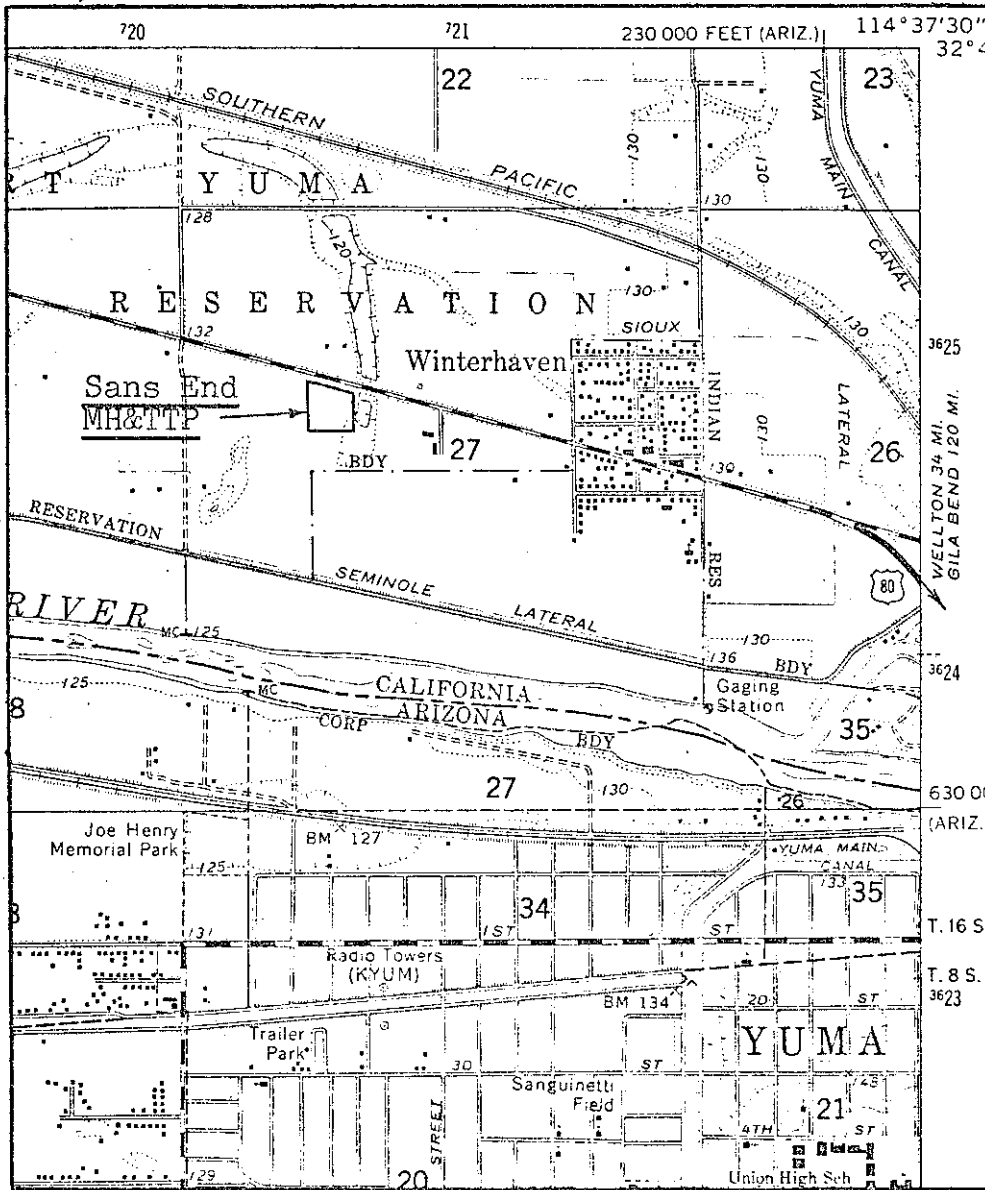


ATTACHMENT A

SANS END MOBILE HOME AND TRAVEL TRAILER PARK
 Winterhaven - Imperial County

Order No. 78-65

CALIFORNIA REGIONAL WATER QUALITY CONTROL BOARD - 7



Scale:
1" = 2,000'

SITE MAP

SANS END MOBILE HOME AND TRAVEL TRAILER PARK
 Winterhaven - Imperial County
 SE $\frac{1}{4}$ of the NW $\frac{1}{4}$ of Section 27, T16S, R22E, SBB&M
 USGS Yuma West 7.5 min. Topographic Map

Order No. 78-65