



## Central Valley Regional Water Quality Control Board

24 July 2019

Latitude 37 Partners, Inc.  
Zinc House Farm  
20679 SR 120  
Escalon, CA 95320

**CERTIFIED MAIL**  
7017 2620 0001 1359 2479

**REVISED NOTICE OF APPLICABILITY  
WAIVER OF WASTE DISCHARGE REQUIREMENTS FOR SMALL FOOD  
PROCESSORS, WINERIES, AND RELATED AGRICULTURAL PROCESSORS  
WITHIN THE CENTRAL VALLEY REGION  
ORDER R5-2015-0005-0107  
LATITUDE 37 PARTNERS, INC., ZINC HOUSE FARM  
SAN JOAQUIN COUNTY**

On 5 February 2015, the Central Valley Regional Water Quality Control Board (Central Valley Water Board) adopted the *Conditional Waiver of Waste Discharge Requirements for Small Food Processors, Wineries, and Related Agricultural Processors within the Central Valley Region*, Order R5-2015-0005 (the Waiver).

We are in receipt of your Report of Waste Discharge (RWD) dated 2 July 2019, which stated that you intend to comply with the Tier 3 conditions of the Waiver. Based on the information provided in the RWD, we have determined that the discharge meets the required conditions for approval under the Waiver. You are hereby assigned Order R5-2015-0005-0107. A Notice of Applicability (NOA) for coverage under the Waiver was originally issued on 16 July 2019; however, Attachment A did not accurately depict the facility site boundary. Therefore, a revised NOA has been issued. A copy of the Waiver is enclosed and also available at the [Central Valley Region 5 webpage](http://www.waterboards.ca.gov/centralvalley/board_decisions/adopted_orders/#waivers) ([http://www.waterboards.ca.gov/centralvalley/board\\_decisions/adopted\\_orders/#waivers](http://www.waterboards.ca.gov/centralvalley/board_decisions/adopted_orders/#waivers)).

Please familiarize yourself with the contents of the Waiver, including the Conditions of Discharge (Waiver Attachment A) and Monitoring and Reporting Program (Waiver Attachment B). Winery waste must be managed and discharged in accordance with the requirements contained in the Conditions of Discharge and with the information submitted in the RWD.

## **DISCHARGE DESCRIPTION**

Zinc House Farm is a planned winery to be located at 20679 SR 120, Escalon in San Joaquin County, as shown on Attachment A. The winery is owned and operated by Latitude 37 Partners, Inc. Tier 3 allows land application of up to 1,000,000 gallons of wastewater per year for irrigation of landscaping or crops and land application of residual solids (pomace and lees) associated with that volume of wastewater. A minimum of one acre of land application area per 100,000 gallons of discharged wastewater and associated residual solids is required. Any process wastewater or residual solids generated in excess of those amounts must be disposed of off-site at an appropriately permitted facility.

The winery will process approximately 50 tons of grapes per year and will generate less than 1,000,000 gallons of winery process wastewater on an annual basis during the processing season, generally July through November. Process wastewater will be generated from cleaning and sanitizing activities, grape crushing and pressing, and bottle filling.

Wastewater will be collected in floor drains connected to a sump/lift station fitted with a screen to remove solids. Wastewater will be collected in two plastic tanks fitted with aerators. A pump and portable hose will transfer the wastewater to a portable hose and impact sprinklers that will be used to evenly apply the wastewater to a 20-acre land application area (LAA). The LAA may also be sprinkler or flood irrigated based on the particular crop type. The LAA will be cropped with wine grapes, vegetables, and fruit and nut trees and bermed to prevent off-site migration of wastewater. Drip irrigation and/or micro-sprinklers may be used in the future. The Discharger estimates that approximately 38 tons of residual solids, including seeds, skins, stems, and spent filter powder, will be produced annually, and land applied to the LAAs as a soil amendment. The solids will be collected in covered bins and land applied within one week of generation. Solids will be applied using a manure spreader trailer pulled by a tractor and spread over the LAA.

## **MONITORING AND REPORTING**

Attachment B of the Waiver includes specific monitoring and reporting requirements that you must comply with, including routine monitoring and reporting to the Central Valley Water Board. Please review the Monitoring and Reporting Program closely and establish the appropriate record keeping system so that you are able to complete the required Annual Monitoring Report form, which is also contained in Attachment B of the Waiver.

By **February 1 of each year**, the Annual Monitoring Report must be submitted to our office, even if there is no discharge during the reporting year. The 2019 Annual Monitoring Report is due by **1 February 2020**.

## GENERAL INFORMATION AND REQUIREMENTS

The Waiver includes specific and general conditions with which you must comply and you must maintain control over the discharge and operate in accordance with the information provided in your RWD and this Notice of Applicability.

Please review this Notice of Applicability carefully to ensure that it completely and accurately reflects the facility name, location, and details of the proposed discharge. Failure to comply with the requirements of the Waiver may result in enforcement action as authorized by provisions of the California Water Code, which could include civil liability. Discharge of wastes not described in the RWD is prohibited. If the method of waste disposal changes from that described in your RWD, you must submit an updated RWD to describe the new operation.

Please note that the Waiver will expire on **5 February 2020**, after which you must do one of the following:

1. Submit a new RWD with a filing fee to obtain coverage under a subsequently adopted waiver,
2. Submit a RWD with a filing fee to apply for individual or general Waste Discharge Requirements, or
3. Cease the discharge.

## DOCUMENT SUBMITTALS

All monitoring reports and other correspondence should be converted to searchable Portable Document Format (PDF) and submitted electronically. Documents that are less than 50 MB should be emailed to [centralvalleysacramento@waterboards.ca.gov](mailto:centralvalleysacramento@waterboards.ca.gov).

To ensure that your submittal is routed to the appropriate staff person, the following information should be included in the body of the email or any documentation submitted to the mailing address for this office:

Facility Name: Zinc House Farm  
County: San Joaquin  
Program: Non-15 Compliance  
Order: R5-2015-0005-0107  
CIWQS Place ID: 859757

Documents that are 50 MB or larger should be transferred to a CD, DVD, or flash drive and mailed to:

Central Valley Regional Water Quality Control Board  
ECM Mailroom  
11020 Sun Center Drive, Suite 200  
Rancho Cordova, CA 95670

Now that the Notice of Applicability has been issued, the Board's Compliance and Enforcement section will take over management of your case. Brendan Kenny is your new point of contact for any questions about the Waiver. If you find it necessary to make a change to your permitted operations, Brendan will direct you to the appropriate Permitting staff. You may contact Brendan at (916) 464-4635 or at [bkenny@waterboards.ca.gov](mailto:bkenny@waterboards.ca.gov).

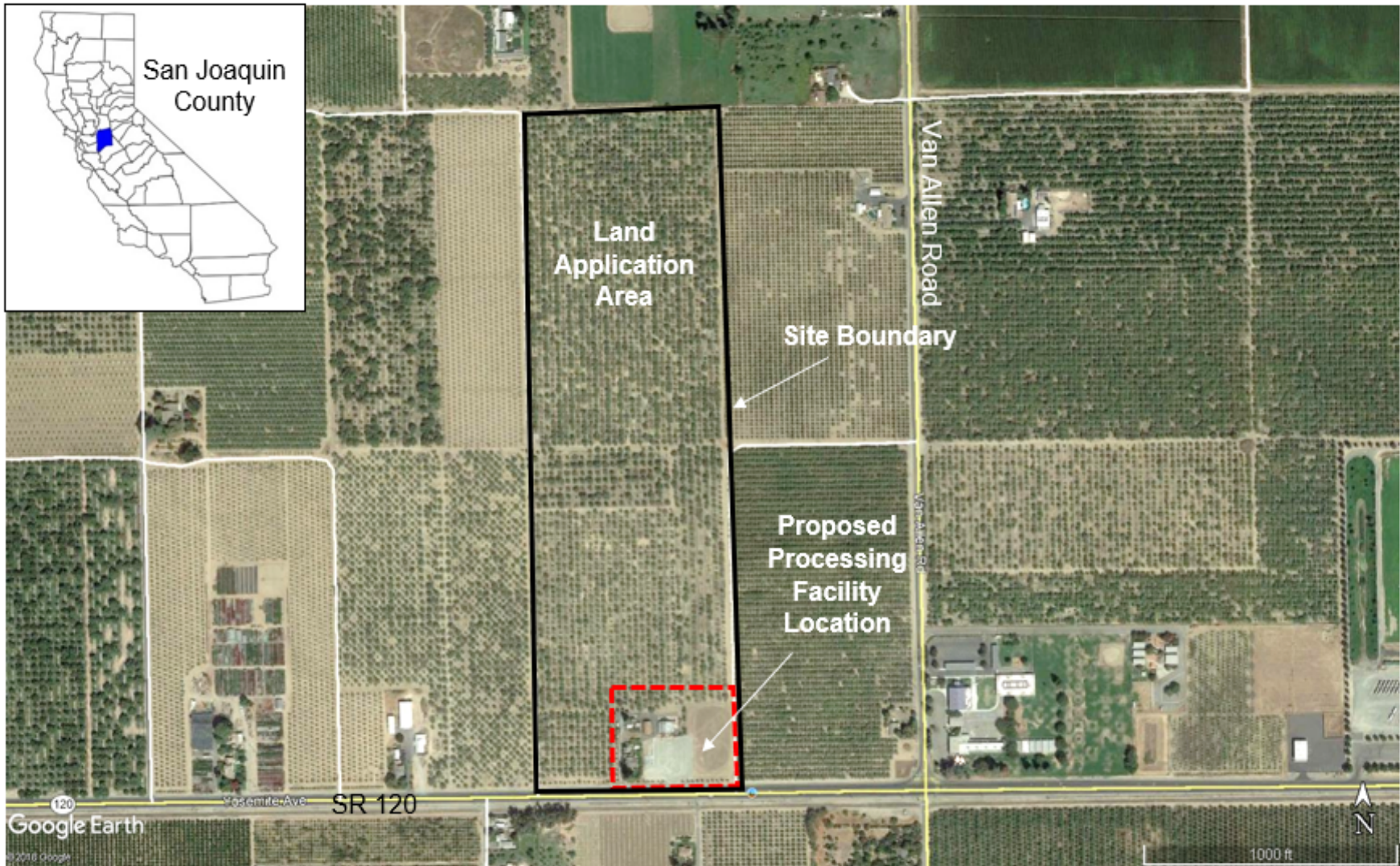
--original signed by Robert Busby for--

PATRICK PULUPA  
Executive Officer

Enclosure: Conditional Waiver of WDRs, Order R5-2015-0005

cc: San Joaquin County Environmental Health Department, Stockton  
Tim O'Brien, State Water Resources Control Board, Sacramento





~ 1,000 feet

**SITE LOCATION MAP**

ZINC HOUSE FARM  
SAN JOAQUIN COUNTY