
Central Valley Regional Water Quality Control Board

19 July 2017

Jason Cashman
Port of Stockton
2201 West Washington Street
Stockton, CA 95203

CERTIFIED MAIL
91 7199 9991 7035 8363 1479

**NOTICE OF APPLICABILITY
WASTE DISCHARGE REQUIREMENTS
FOR THE PORT OF STOCKTON MAINTENANCE DREDGING ACTIVITIES
ORDER R5-2009-0085-20**

**THE PORT OF STOCKTON
DOCKS 2 - 20 MAINTENANCE DREDGING PROJECT
SAN JOAQUIN COUNTY**

On 27 June 2017, the Port of Stockton (Discharger) filed a Notice of Intent (NOI), requesting coverage under *Waste Discharge Requirements for Maintenance Dredging Operations*, Order R5-2009-0085 (Order) for maintenance dredging of the Port of Stockton's Docks 2 through 20. After reviewing the NOI submitted by the Discharger, the Central Valley Regional Water Quality Control Board (Central Valley Water Board) has determined that the placement of dredged materials associated with this project qualifies for enrollment under this Order

The Discharger is hereby assigned R5-2009-0085-20. Please include this number on all correspondence related to this discharge.

The in-water work associated with this project is covered under Clean Water Act Section 401 Water Quality Certification (WDID# 5B39CR00268) issued to the Port of Stockton on 22 April 2016 for the Port of Stockton 5-Year Programmatic Maintenance Dredging Project.

A copy of the Order is enclosed. You can also find the Order on the Central Valley Water Board's website at:
http://www.waterboards.ca.gov/centralvalley/board_decisions/adopted_orders/

The project must proceed in accordance with the requirements contained in this Notice of Applicability, Order, and NOI application package. Coverage under this Notice of Applicability is valid for the period of coverage under the Water Quality Certification WDID# 5B39CR00268, or any amendments to the Water Quality Certification. This Notice of Applicability is no longer valid if the project (as described in this Notice of Applicability and the NOI application package) is modified.

PROJECT DESCRIPTION:

The Port of Stockton Docks 2-20 Maintenance Dredging Project (Project) will dredge docks to authorized depths (-40 feet mean lower low water (MLLW) for Docks 12 and 13, and -35 feet MLLW for Docks 2-11 and Docks 14-20, (plus two-foot allowable overdredge)). The total volume of existing sediment requiring dredging (including overdredge) is 75,000 cubic yards.

Dredging is planned to be conducted annually over the 5-year life of this authorization. Annual volume of upland placement from dredging activities will be up to 75,000 cubic yards. Dredging operations will consist primarily of hydraulic cutterhead suction dredging, however clamshell dredging may be employed as needed, and at Docks 16-20 due to large quantities of metallic debris that may be present in the sediments.

Dredging and Placement Sites

Dredged material removed by hydraulic cutter head suction dredge will be transported by pipeline for placement at Roberts Island and Rough and Ready Island placement sites. Sediments dredged by clamshell will be transported by trucks to the authorized placement sites.

No discharge to surface waters from material placement is expected to occur.

APPROXIMATE TIME FRAME OF PROJECT IMPLEMENTATION:

14 July to 30 November annually through 2021

PROJECT LOCATION:

Start: Latitude: 37.9508333°; Longitude: -121.33527778°

ADDITIONAL CONDITIONS:

Reuse of Dredged Materials

1. Locations where reuse of dredge materials is authorized are identified in Attachment A. If reuse of dredged material is proposed outside of the area identified in Attachment A, the Discharger shall submit an NOI to Central Valley Water Board staff for approval 30 days prior to reuse. Dredged material may not be reused, without prior authorization from Central Valley Water Board staff, in locations where direct hydraulic connections or direct contact with surface waters may occur, or in sensitive ecological areas, such as wetlands.
2. For all reuse activities undertaken according to this Notice of Applicability, the Discharger shall provide the Central Valley Water Board a written notice of the following:
 - 1) Quantity of dredged material removed from placement site for reuse;
 - 2) Dates of transfer of material;
 - 3) Location of reuse;
 - 4) Name of contractor;
 - 5) Copy of signed contract/manifest for removal of dredged material;
 - 6) Copy of Dredged Material Reuse Agreement signed by end-user which states agreement to all conditions of reuse specified in this Notice of Applicability.
3. Notice of reuse of dredged material shall be provided in writing to the Central Valley Water Board within 30 days of removal from placement sites.

Monitoring

1. The Project activities shall be monitored in accordance with the requirements of Monitoring and Reporting Program R5-2009-0085, Standard Provisions and Reporting Requirements, dated 1 March 1991, and with the information submitted in the Notice of Intent.

Reporting

1. The Discharger shall notify Central Valley Water Board staff immediately if any nuisance or detriment to receiving waters is observed during the Project activities.

Failure to abide by the conditions of the Order may result in an enforcement action as authorized by provisions of the California Water Code.

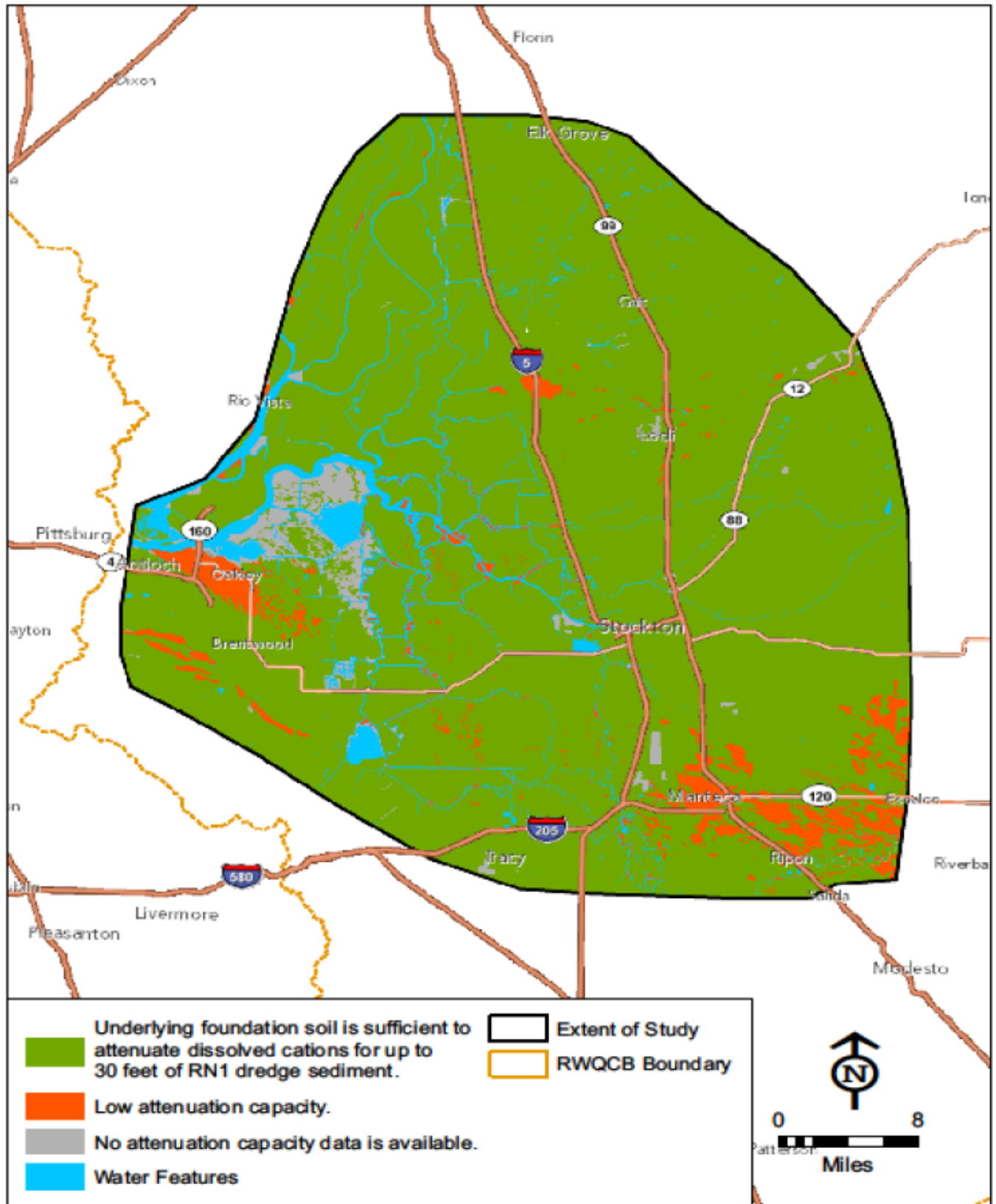
Upon Project completion, please notify the Central Valley Water Board so that a Notice of Termination may be issued. If you have any questions regarding this Notice of Applicability, contact Dr. Philip Giovannini at (916) 464-4812 or at Phillip.Giovannini@waterboards.ca.gov.

Original signed by Adam Laputz for

Pamela C. Creedon
Executive Officer

Enclosures: Attachment A – Approved Reuse Area
California Regional Water Quality Control Board, Central Valley Region, Order
No. R5-2009-0085, Waste Discharge Requirements for Maintenance Dredging
Operations

cc: (Electronic Copies Only)
Richard Aschieris, Port of Stockton
Charity Meakes, United States Army Corps of Engineers, Sacramento District
Mary Pakenham-Walsh, United States Army Corps of Engineers, Sacramento District
Katie Chamberlin, Anchor QEA, San Francisco



Attachment A – Approved Reuse Area