



CENTRAL VALLEY REGIONAL WATER QUALITY CONTROL BOARD

10 September 2021

Caltrans
Sean G. Cross
703 B Street
Marysville, CA 95901

CERTIFIED MAIL
7020-1810-0002-0569-5529

**NOTICE OF APPLICABILITY
WATER QUALITY ORDER 2003-0003-DWQ
STATEWIDE WASTE DISCHARGE REQUIREMENTS FOR DISCHARGES TO LAND
WITH A LOW THREAT TO WATER QUALITY
CALIFORNIA DEPARTMENT OF TRANSPORTATION
CONSTRUCTION DEWATERING FOR HONCUT CREEK BRIDGE
SAFETY PROJECT
(EA NO. 03-3H930),
YUBA AND BUTTE COUNTIES**

On 29 June 2021, California Department of Transportation (Caltrans) submitted a Notice of Intent (NOI) to obtain coverage under Water Quality Order 2003-0003-DWQ, *Statewide General Waste Discharge Requirements for Discharges to Land with a Low Threat to Water Quality* (hereafter General Order) for construction dewatering at the above-referenced project. The submittal contains all the information required to evaluate applicability of the General Order; therefore, the NOI is considered complete. Based on the information provided in the NOI, the discharge meets the conditions of the General Order. The discharge is hereby covered under State Water Resources Control Board General Order 2003-0003-DWQ-0222. Please include this number on all correspondence related to this discharge.

PROJECT LOCATION AND DESCRIPTION

The project is located on State Route 70 at the Honcut Creek Bridge, on the Yuba and Butte County lines, as shown on Attachment A. The project is a safety improvement project that will require groundwater dewatering during placement of a new bridge spanning Honcut Creek. Extracted groundwater not in contact with concrete will be discharged within the State's Right of Way (ROW) and will not leave the ROW, temporary easements, or flow into any receiving waters.

If extracted groundwater comes in contact with concrete, the impacted water will be pumped to Baker tankers to be treated and neutralized. The pH target level between pH 6.5 and 8.4 will be achieved prior to discharging to land. The neutralized water may be used for dust control and suppression and road-base compaction as part of the construction project.

KARL E. LONGLEY SCD, P.E., CHAIR | PATRICK PULUPA, ESQ., EXECUTIVE OFFICER

Approximately 800,000 gallons of groundwater are expected to be discharged intermittently at a rate of approximately 5,000 gallons per day, based on geotechnical information, construction experience, and conservative assumptions made by the Project Engineer. The project is expected to begin in summer 2021 with project completion scheduled for late 2023.

The Water Quality Control Plan for the Sacramento River and San Joaquin River Basins, Fifth Edition, revised May 2018 (hereafter Basin Plan), designates beneficial uses, establishes water quality objectives, contains implementation plans and policies for protecting waters of the basin, and incorporates by reference plans and policies adopted by the State Water Resources Control Board. Pursuant to §13263(a) of the California Water Code (CWC), waste discharge requirements must implement the Basin Plan.

FACILITY-SPECIFIC REQUIREMENTS

The General Order and this Notice of Applicability regulates construction dewatering for the Honcut Creek Bridge Project (EA No. 03-3H930).

1. Wastewater generated during construction dewatering shall be disposed of as described in the Notice of Intent, the Discharger Monitoring Program (DMP), and in accordance with the requirements contained in the General Order.
2. Construction dewatering discharged at a location or in a manner different from that described in the Notice of Intent or this Notice of Applicability is prohibited.
3. All technical reports required herein that involve evaluation, or other work requiring interpretation and proper application of engineering or geologic sciences, shall be prepared by or under the direction of persons registered to practice in California pursuant to California Business and Professions Code, section 6735, 7835, and 7835.1. As required by these laws, completed technical reports must bear the signature(s) and seal(s) of the registered professional(s) in a manner such that all work can be clearly attributed to the professional responsible for the work.
4. Monitoring results shall be submitted on a semi-annual basis in accordance the General Order's Monitoring and Reporting Program. For the January through June reporting period, the monitoring report is due August 15. For the July through December reporting period, the monitoring report is due February 15.
5. The Discharger shall submit the required annual fee (as specified in the annual billing issued by the State Water Resources Control Board) until the Notice of Applicability is officially terminated.
6. Failure to abide by the conditions of the General Order, including its monitoring and reporting requirements, and this letter authorizing applicability could result

in enforcement actions, as authorized by provisions of the California Water Code.

DOCUMENT SUBMITTALS

All monitoring reports and other correspondence should be converted to searchable Portable Document Format (PDF) and submitted electronically. Documents that are less than 50 MB should be emailed to:

centralvalleysacramento@waterboards.ca.gov

To ensure that your submittal is routed to the appropriate staff person, the following information should be included in the body of the email or any documentation submitted to the mailing address for this office:

Facility Name: Honcut Creek Bridge Project, Yuba and Butte Counties		
Program: Non-15 Compliance	Order: 2003-0003-DWQ-0222	CIWQS Place ID: 876075

Documents that are 50 MB or larger should be transferred to a CD, DVD, or flash drive and mailed to:

Central Valley Regional Water Quality Control Board
ECM Mailroom
11020 Sun Center Drive, Suite 200
Rancho Cordova, CA 95670

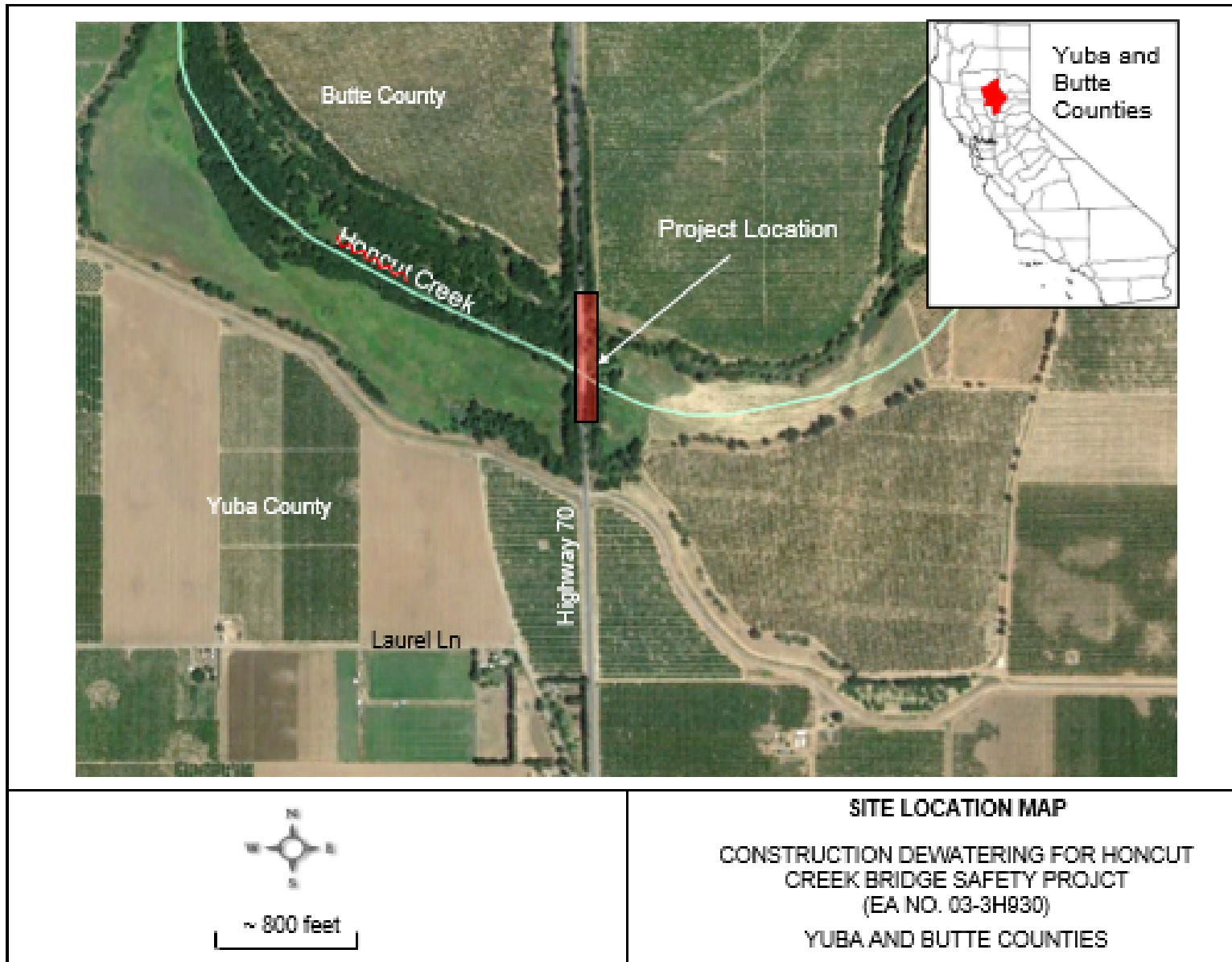
Now that the NOA has been issued, the Board's Compliance and Enforcement section will take over management of your case. Brendan Kenny is your new point of contact for any questions about the Order. In addition, all monitoring and technical reports should be submitted to him. The enclosed transmittal sheet shall be included with each monitoring report. If you find it necessary to make a change to your permitted operations, Brendan will direct you to the appropriate Permitting staff. You may contact Brendan at bkenny@waterboards.ca.gov.



For PATRICK PULUPA
Executive Officer

Enclosures: Water Quality Order No. 2003-0003-DWQ
Attachment A: Site Location Map

cc w/o enc: Yuba County Environmental Health Department
Butte County Environmental Health Department



KARL E. LONGLEY ScD, P.E., CHAIR | PATRICK PULUPA, ESQ., EXECUTIVE OFFICER