
Central Valley Regional Water Quality Control Board

29 August 2016

Richard Swanson
IT Environmental Liquidating Trust
2251 Lake Herman Road
Benicia, CA 94510

CERTIFIED MAIL
91 7199 9991 7035 8421 0598

NOTICE OF APPLICABILITY

**WATER QUALITY ORDER 2003-0003-DWQ
STATEWIDE WASTE DISCHARGE REQUIREMENTS FOR DISCHARGES TO LAND WITH
A LOW THREAT TO WATER QUALITY
IT ENVIRONMENTAL LIQUIDATING TRUST
BENSON RIDGE FACILITY
LAKE COUNTY**

On 18 August 2016, IT Environmental Liquidating Trust (hereby Discharger) submitted a Notice of Intent (NOI) to obtain coverage under Water Quality Order 2003-0003-DWQ, *Statewide General Waste Discharge Requirements for Discharges to Land with a Low Threat to Water Quality* (hereafter General Order) for miscellaneous rainwater discharges at the above-referenced site. Additional information was submitted on 23 August 2016. The submittal contains all the information required to evaluate applicability of the General Order; therefore, the NOI is considered complete. Based on the information provided in the NOI, the discharge meets the conditions of the General Order. The discharge is hereby covered under State Water Resources Control Board General Order 2003-0003-DWQ-0151. Please include this number on all correspondence related to this discharge.

PROJECT LOCATION

The Benson Ridge Facility (Facility) is a closed Class I landfill with an active Class II surface impoundment (groundwater evaporation basin). Located at 7620 on State Highway 29 and approximately 2.5 miles southeast of Kelseyville in Lake County, the property covers approximately 150 acres of land, of which approximately 25 acres was used to conduct waste management operations. From 1978 until 1984, the Facility was operated as a commercial hazardous waste disposal facility. The only activities currently conducted at the Facility are related to post-closure care, including extraction of impacted groundwater, evaporation of extracted groundwater in an on-site evaporation basin, groundwater monitoring, routine inspections, and maintenance as necessary. No hazardous or industrial materials are stored or used at the site.

The Facility is located in a valley bounded by steep hillsides. Storm water flows on to the facility from the west, north, and east slopes. Direct rainfall and run-on storm water is diverted

into perimeter drainages then channeled to a series of three sedimentation basin prior to leaving the site.

The Water Quality Control Plan for the Sacramento River and San Joaquin River Basins, Fourth Edition, revised October 2011 (hereafter Basin Plan), designates beneficial uses, establishes water quality objectives, contains implementation plans and policies for protecting waters of the basin, and incorporates by reference plans and policies adopted by the State Water Resources Control Board. Pursuant to §13263(a) of the California Water Code (CWC), waste discharge requirements must implement the Basin Plan.

PROJECT DESCRIPTION

The groundwater evaporation basin, which is divided into a north and south cell, is used for year-round storage use of site-generated groundwater. During the wet months (i.e., October through April), the north basin is thoroughly cleaned at the onset of the wet season (typically in September or October) to allow collection of rainwater. Following the wet season, the collected rainwater will be discharged (via spray irrigation) to three designated land application areas totaling approximately 39.5 acres (LAA) located on the Discharger's property as shown in **Attachment A**. LAA 1 is covered with natural grass vegetation. LAA 2 and 3 is covered with natural brush vegetation.

Discharge operations will typically occur during the months of February, March, and April. However, discharges may occur during any month when there are surface impoundment capacity concerns. The discharge will intermittently occur up to several weeks during the discharge months until all rainwater is removed from the designated basin.

The volume of rainwater to be discharged is dependent on the rainfall season. During the past 10 years, the amount of rainwater collected has ranged from 1 to 3.5 acre-feet. Previous discharge rates have varied between 18 to 150 gallons per minute.

FACILITY-SPECIFIC REQUIREMENTS

The General Order and this Notice of Applicability regulates miscellaneous rainwater discharges at the Benson Ridge Facility.

1. Rainwater collected in the designated evaporation basin shall be disposed of as described in the Notice of Intent and in accordance with the requirements contained in the General Order.
2. Miscellaneous rainwater discharges at a location or in a manner different from that described in the Notice of Intent or this Notice of Applicability is prohibited.
3. All technical reports required herein that involve evaluation, or other work requiring interpretation and proper application of engineering or geologic sciences, shall be prepared by or under the direction of persons registered to practice in California pursuant to California Business and Professions Code, section 6735, 7835, and 7835.1. As required by these laws, completed technical reports must bear the signature(s) and seal(s) of the registered professional(s) in a manner such that all work can be clearly attributed to the professional responsible for the work.
4. The Discharger shall comply with the monitoring and reporting requirements prescribed in Monitoring and Reporting Program (MRP) R5-2016-0845, which replaces the General Order's MRP 2003-0003-DWQ. Analytical results shall be submitted on an annual basis in accordance MRP R5-2016-0845.

5. The Discharger shall submit the required annual fee (as specified in the annual billing issued by the State Water Resources Control Board) until the Notice of Applicability is officially terminated.
6. Failure to abide by the conditions of the General Order, including its monitoring and reporting requirements, and this letter authorizing applicability could result in enforcement actions, as authorized by provisions of the California Water Code.

DOCUMENT SUBMITTALS

All monitoring reports and other correspondence should be converted to searchable Portable Document Format (PDF) and submitted electronically. Documents that are less than 50 MB should be emailed to: centralvalleysacramento@waterboards.ca.gov.

To ensure that your submittal is routed to the appropriate staff person, the following information should be included in the body of the email or any documentation submitted to the mailing address for this office:

Facility Name: Benson Ridge Facility, Lake County		
Program: Non-15 Compliance	Order: R5-2003-0003-DWQ-0151	CIWQS Place ID: 209270

Documents that are 50 MB or larger should be transferred to a CD, DVD, or flash drive and mailed to:

Central Valley Regional Water Quality Control Board
ECM Mailroom
11020 Sun Center Drive, Suite 200
Rancho Cordova, CA 95670

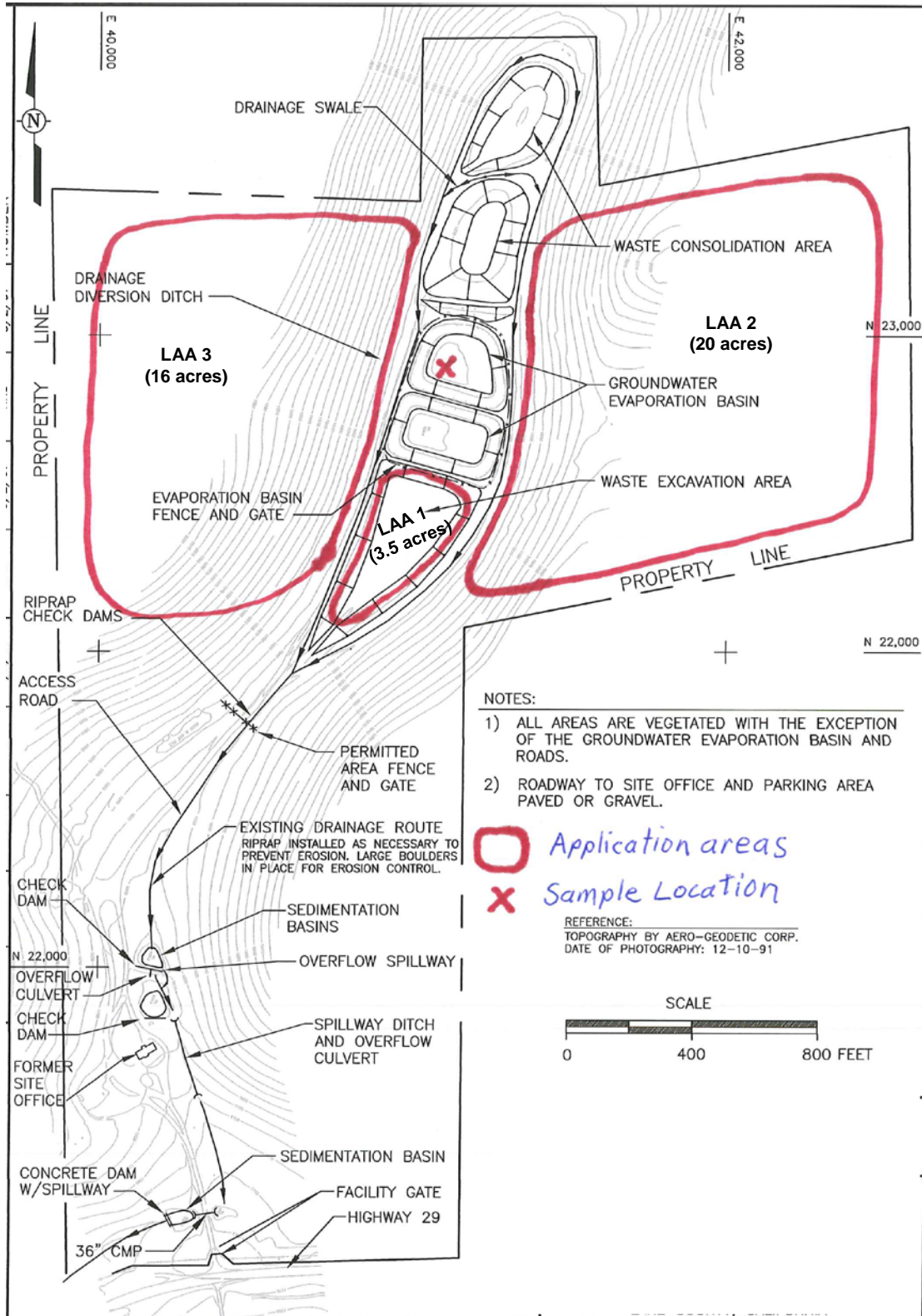
Now that the NOA has been issued, the Board's Compliance and Enforcement section will take over management of your case. Guy Childs is your point of contact for any questions about the Order. In addition, all monitoring and technical reports should be submitted to him. The enclosed transmittal sheet shall be included with each monitoring report. If you find it necessary to make a change to your permitted operations, Guy will direct you to the appropriate Permitting staff. You may contact Guy at (916) 464-4648 or at gchilds@waterboards.ca.gov

- Original signed by Andrew Altevogt for -

PAMELA C. CREEDON
Executive Officer

encl: Water Quality Order No. 2003-0003-DWQ
Monitoring and Reporting Program R5-2016-0845

Cc w/o encl: Tim O'Brien, State Water Resources Control Board, Sacramento
Ray Ruminski, Lake County Environmental Health, Lakeport
Sunil Kishnani, IT Environmental Liquidating Trust, Benicia



Drawing Reference:
 Notice of Intent
 18 August 2016

FACILITY MAP
 BENSON RIDGE FACILITY
 LAKE COUNTY

