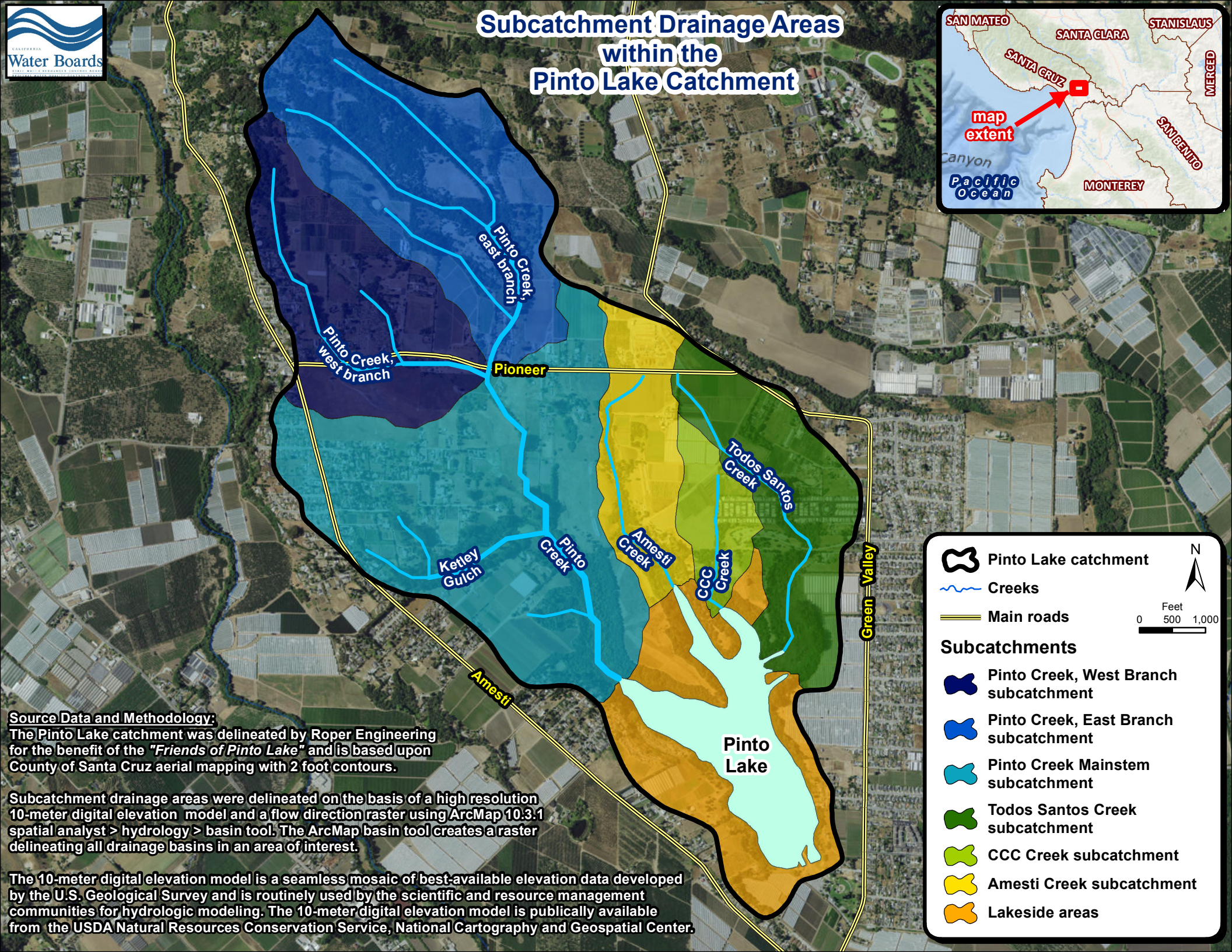




# Subcatchment Drainage Areas within the Pinto Lake Catchment



**Legend**

- Pinto Lake catchment
- Creeks
- Main roads

**Subcatchments**

- Pinto Creek, West Branch subcatchment
- Pinto Creek, East Branch subcatchment
- Pinto Creek Mainstem subcatchment
- Todos Santos Creek subcatchment
- CCC Creek subcatchment
- Amesti Creek subcatchment
- Lakeside areas

Feet  
0 500 1,000

N

**Source Data and Methodology:**  
 The Pinto Lake catchment was delineated by Roper Engineering for the benefit of the "Friends of Pinto Lake" and is based upon County of Santa Cruz aerial mapping with 2 foot contours.

Subcatchment drainage areas were delineated on the basis of a high resolution 10-meter digital elevation model and a flow direction raster using ArcMap 10.3.1 spatial analyst > hydrology > basin tool. The ArcMap basin tool creates a raster delineating all drainage basins in an area of interest.

The 10-meter digital elevation model is a seamless mosaic of best-available elevation data developed by the U.S. Geological Survey and is routinely used by the scientific and resource management communities for hydrologic modeling. The 10-meter digital elevation model is publically available from the USDA Natural Resources Conservation Service, National Cartography and Geospatial Center.